

Recovery Iowa- Des Moines 360

Report provided to the Iowa Department of Public Health,
Substance Abuse Bureau
October, 2021



Report by Shawn Dorius, Cassandra Dorius, Matthew Voss, Masoud Nostari, Arielle True-Funk, and Timothy Potter

Table of Contents

Overview	1
What is Recovery?.....	2
What is A Recovery Community Center?	2
Is Your Community Recovery Ready?.....	3
What Peer Support Meetings are Available in Your Area?	5
What Recovery Resources Are Available in Your Area?.....	6
What Community Resources are Available in Your Area?	8
Which Neighborhoods in Your Community Need Additional Health Resources and Support?	9
What’s Driving Health Disparities in Your Community?.....	13
APPENDIX 1: Data Used in this Report	15
APPENDIX 2: Peer Support Contacts in Your Area	23
APPENDIX 3: Recovery Resources in Your Area	34
APPENDIX 4: Community Resources in Your Area	40

Overview

At the request of the Iowa Department of Public Health, Bureau of Substance Abuse, the Public Science Collaborative (PSC) developed community-specific reports to support recovery efforts in Iowa. Recognizing the need to strengthen substance use recovery efforts throughout the state, we identified a large number of existing recovery-oriented resources in Des Moines, which we describe and map in the pages that follow. We developed additional maps to identify at-risk neighborhoods that will benefit from targeted health interventions and additional community resources.

For additional questions or information about this report, the data tools described, or the Public Science Collaborative, please reach out to the principal investigators of this study, Dr. Shawn Dorius at sdorius@iastate.edu, or Dr. Cassandra Dorius at cdorius@iastate.edu.

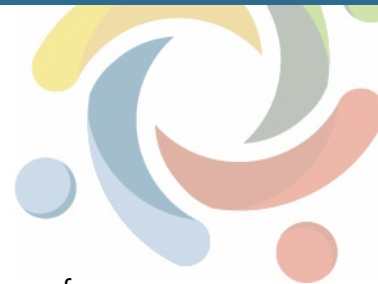
A handwritten signature in black ink, appearing to read "Shawn Dorius".

*Shawn Dorius, PhD
Iowa State University
Public Science Collaborative*

A handwritten signature in black ink, appearing to read "Cass Dorius".

*Cass Dorius, PhD
Iowa State University
Public Science Collaborative*

This project was supported by the Iowa Department of Public Health, Bureau of Substance Abuse (IDPH) via a subaward from the Substance Abuse and Mental Health Services (SAMHSA) of the U.S. Department of Health and Human Services (HHS) as part of a financial assistance award totaling \$350,000 with 100 percent funded by SAMHSA/HHS. The contents are those of the author(s) and do not necessarily represent the official views of, nor an endorsement by, IDPH, SMHSA/HHS, or the U.S. Government.



What is Recovery?

Though substance use recovery is an evolving concept that has been defined in a number of ways over the years, an emerging consensus is that recovery is a voluntary path toward improved personal wellbeing coupled with a diminished risk of substance use relapse. As noted by Bill White (2007):

*Recovery is the experience through which individuals, families, and communities impacted by severe **alcohol and other drug** (AOD) problems utilize internal and external resources to voluntarily resolve these problems, heal the wounds inflicted by AOD related problems, actively manage their continued vulnerability to such problems, and develop a healthy, productive, and meaningful life.*

In White's view, resources help individuals, families, and communities in two ways. First, they help address alcohol and other drug-related problems (for example, addiction, unemployment, housing instability, family separation), and second, they support health, productivity, and meaning in post-treatment life. The appeal of this view is that it is explicit and direct in its recognition that recovery involves not only internal resources such as mental, emotional, and genetic factors but also external ones. In thinking about where to focus federal and state resources to develop a network of community-based recovery centers in Iowa, the key question is, "What kinds of external resources matter most for sustained SUD recovery?"

If we knew which resources were most helpful to long-run recovery, we could target towns and cities with large stocks of 'recovery resources' to grow Recovery Community Centers.

What is a Recovery Community Center?

Recovery Community Centers (RCCs) represent low-cost, member-driven, voluntarist, locally managed, and community-engaged pathways to sustainable recovery for people with substance use disorder, or SUD. RCCs accomplish these goals by linking people to existing resources and infrastructure and promoting a vibrant recovery culture based in a **physical community center where people in recovery can visit, engage with others in recovery, and access resources**. RCCs are an innovative, safe, and helpful source of community recovery support that provides linkages to existing local services and resources that support recovery for people with a substance use or mental health disorder. RCCs support recovery by helping people in the community who have a history of substance use to develop recovery capital, the personal resources that enable people to live healthy, productive, and community engaged lives. RCCs do this by connecting members of the recovery community, called peers, with different types of services such as recovery coaching, medication assisted treatment, connection to employment services and child care, recovery-oriented housing, or education and workforce development training services. Located in the heart of the community, Recovery Community Centers improve the ability of the local recovery community to care for one another, and they also help destigmatize the lives of people in recovery.



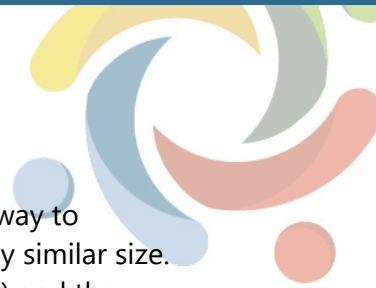
The RCC model of recovery is validated by academic studies and is promoted by both the SUD community and public health officials. However, finding the right communities for RCC development in Iowa has proven difficult, underscoring the fact that Iowa is one of just a few states in the U.S. that has yet to adopt the recovery community model.

Is Your Community Recovery Ready?

What is the RRCI and how was it created? We consulted scientific literature on substance use recovery and engaged key stakeholders who work directly with people in recovery around the country and in Iowa. This helped us to identify 17 unique community-based resources that we collected for almost all of Iowa's 944 cities and towns. In total, we found nearly 16,000 community features that support recovery. We mapped and analyzed these resources so we could identify a short list of 'Recovery Ready' communities across the state, culminating in the first-of-its-kind index: **The Recovery Ready Community Index (RRCI)**.

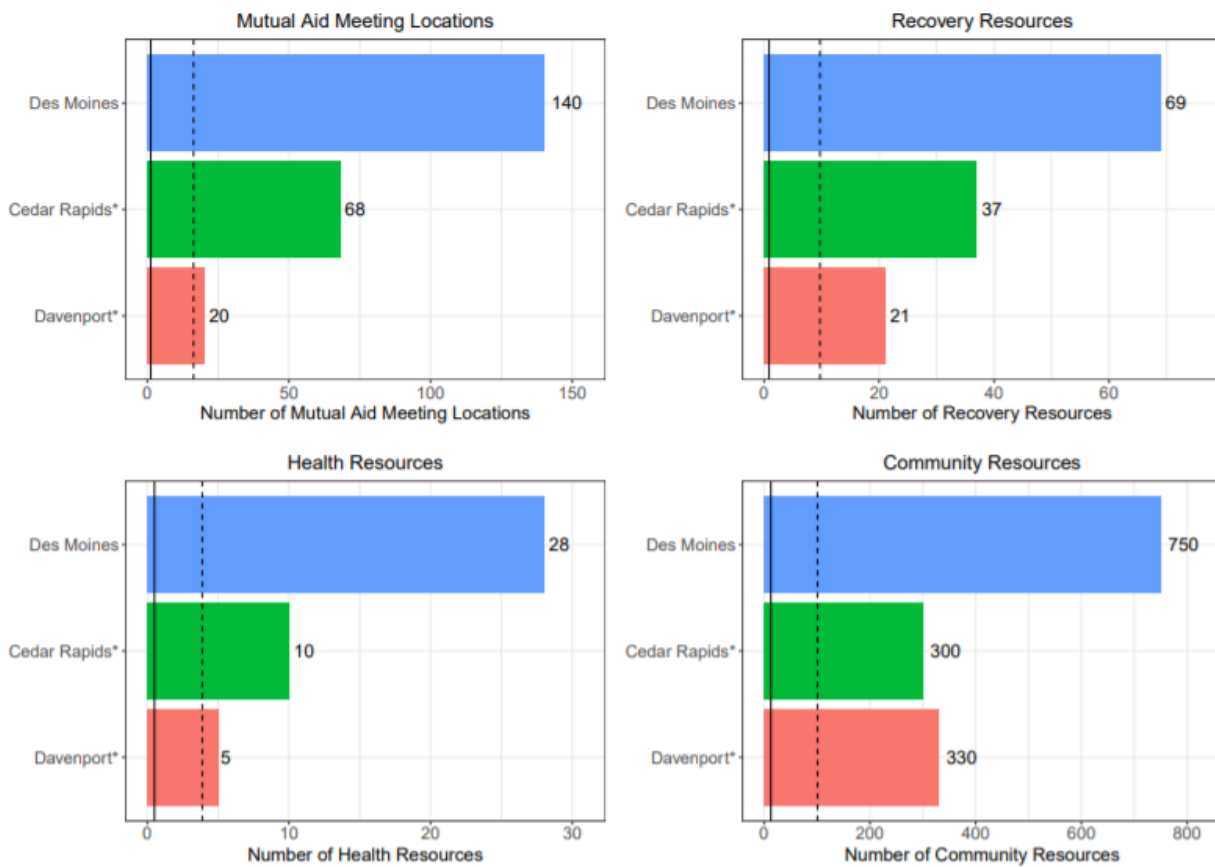
The RRCI encompasses four dimensions: breadth, depth, size, and strength. Breadth of recovery resources was measured by counting the number of different types of recovery resources in each county and community. For example, counting if there is at least one hospital, one treatment center, and one drug drop off location in town. Depth of recovery resources was measured by first counting the total number of resources in each category and then ranking cities accordingly. This gives added importance to places that have, for example, more than one medication assisted treatment provider and many different recovery houses in town. Size of local recovery culture was measured by the total number of weekly mutual aid and peer support meetings per week in each city (e.g. total number of NA and AA meetings). Finally, the strength of the recovery community was measured as the difference between the total number of weekly peer support meetings and the number of meetings expected, based upon the total population of each town. These four dimensions were used to create the Recovery Ready Community Index. The RRCI is the simple average of each town's ranking across the four dimensions or recovery readiness. Places that ranked high on all four dimensions are labeled as especially recovery ready.

How recovery ready is your community? Are you well-positioned to support a Recovery Community Center in your community? **According to the Recovery Ready Community Index (RRCI), Des Moines scored 45.9, placing it in the top 30 communities in Iowa** (Iowa's RRCI state average is 32.7). With more than 163 mutual aid and peer support meeting locations each week, the size of the recovery culture in Des Moines is among the largest in the state. Des Moines also has an especially strong recovery culture, meaning that the 233 peer support meetings each week (held at the locations noted previously) are more than would be expected for a town of this size. Des Moines also scored high on the breadth score (17), indicating that it has a wide variety of different recovery resources to support its residents on the individual recovery journey. In short, Des Moines is well-positioned to support a thriving recovery culture, including the development of a recovery community center.



Relative to all cities, Des Moines ranks high in terms of its recovery readiness. Another way to understand recovery resources in Des Moines is to compare it to other towns of roughly similar size. Des Moines far exceeded both the state average (illustrated with a solid line in Figure 1) and the average of the 50 largest communities (illustrated with a dashed line Figure 1). When we compared it to the similarly-sized cities of Des Moines and Davenport (see Figure 1 below), Des Moines stands out as especially strong on total number of recovery resources and total weekly mutual aid meetings. In terms of total health resources, Des Moines has more than Cedar Rapids and Davenport. Des Moines far exceeds the numbers of community resources such as parks, libraries, and child care centers than similarly sized cities.

Figure 1. Recovery Ready Community Index: Comparison of Des Moines to Other Iowa Communities on 'Recovery Readiness'





What Peer Support Meetings are Available in Your Area?

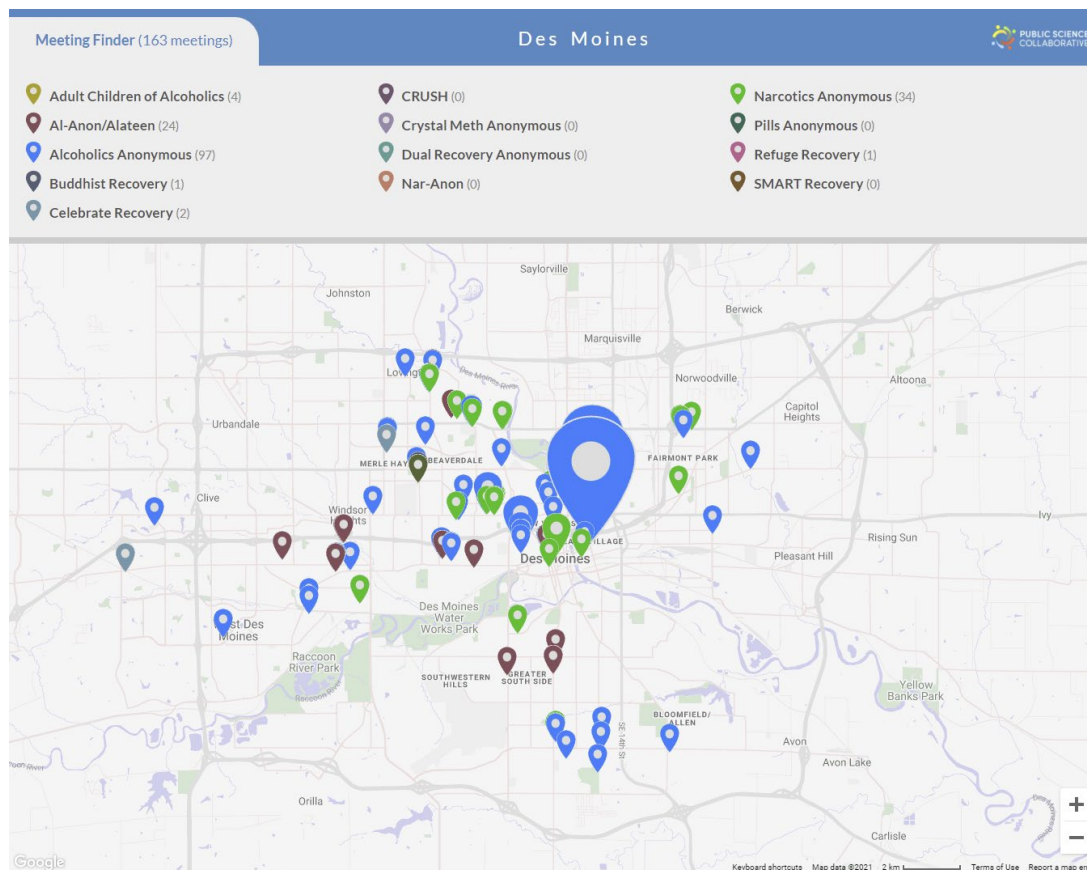
Recovery meetings, such as Alcoholics and Narcotics Anonymous, play a significant role in facilitating the recovery process. Despite the importance of these meetings there is no coherent 'one stop shop' to find the meeting you need, when you need it. People usually need to go through several steps, such as searching for meetings on Google, or looking for a specific meeting time/place on a local listings' website. It can be hard enough to connect with peer support during the best of times, but doubly so when you are in crisis and questioning your recovery. Magnifying the challenge of finding the right meeting at the right time is being new to a community, unfamiliar with the members of a local meeting, and being in a moment of duress.

We developed the PSC Meeting Finder Tool to make it easier to find local meetings. We do this by presenting a map-based list of meetings all throughout Iowa and we update the map every single day. It's a simple interface that helps people to find the appropriate meetings nearby, right now. Users can filter meetings by time of day, day of week, or whether childcare is available, for example, to find the right meeting at the right time. Having a responsive design, PSC Meeting Finder Tool runs efficiently and quickly on many different kinds of computers and mobile devices such as smartphones. Figure 2 on the next page is a screen capture of the PSC Meeting Finder where you can see the location of all known peer support meetings in your community. A web version of this map is available at: http://public-science.org/reportmaps/des_moines/mf.php. A full listing of these resources is provided as a table with meeting, type, group name, number of meetings per week, and location of meetings in Appendix 2.

As illustrated in Figure 2, Des Moines has about 160 peer support meetings locations in a given week. The majority of these meetings are sponsored by Alcoholics Anonymous and Narcotics Anonymous, but there are also several other meeting sponsors such as Al-Anon/Alateen and Celebrate Recovery. Meetings are located throughout the community, including in the East Village, Sherman Hill, and Downtown neighborhoods. The map also reveals some places where there are few or no weekly meetings, which may help local peer support groups to identify new places to sponsor a meeting and support local recovery.



Figure 2. Peer Support Meetings in Des Moines



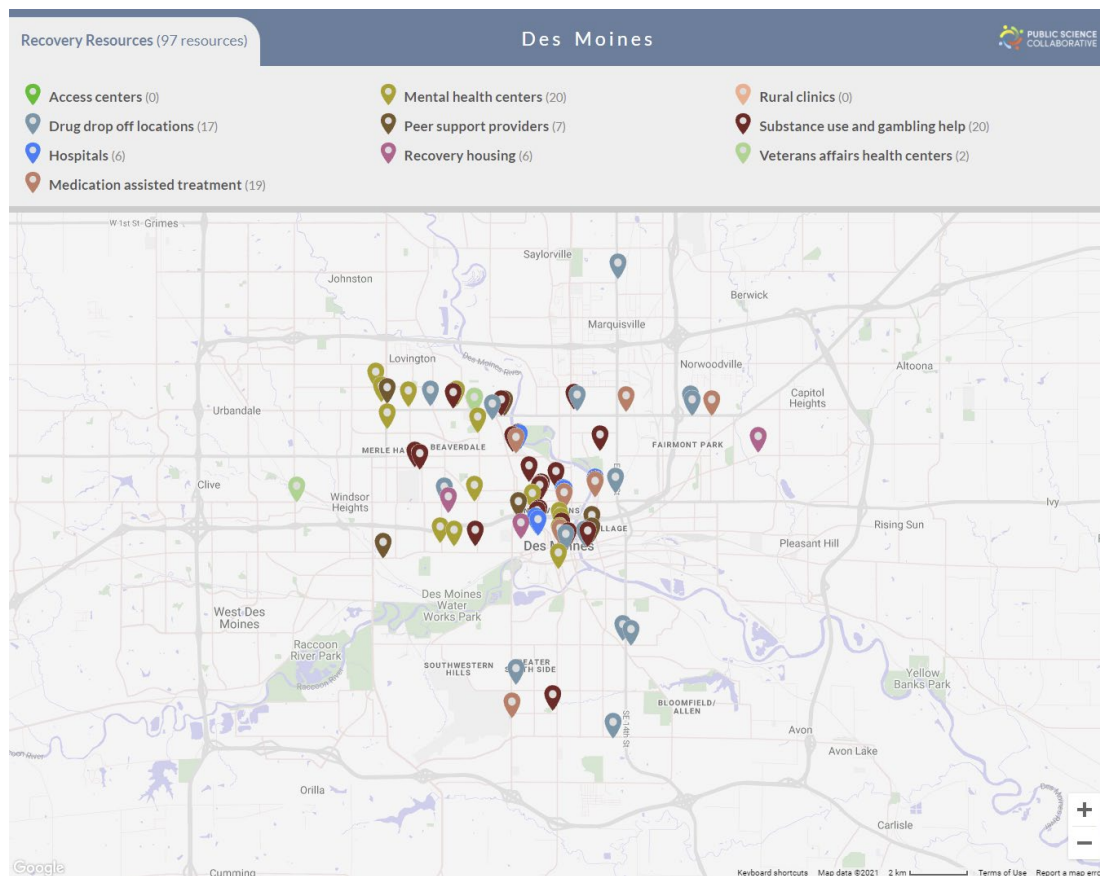
Note: Larger markers indicate the locations that host more than one meeting per week. (Min=1, Max=9). For example, in Des Moines there are 233 total meetings hosted each week in the 163 locations identified above.

What Recovery Resources Are Available in Your Area?

Despite their importance, community-based recovery resources can be hard to find. Whether a person is new to the community or a long-term resident, some resources remain unknown to many people in the community. The PSC Recovery Resource Locator aims to help solve this problem. Figure 3 is a screen capture of the PSC Recovery Resource Locator where you can see the location of some of the great resources your community offers to its recovery community. A web version of this map is available at: http://public-science.org/reportmaps/des_moines/rr.php. A full listing of these resources is provided as a table with resource name, type, and location in Appendix 3.



Figure 3. Recovery Resources in Des Moines



Des Moines has nearly 100 recovery resources available to support its residents in recovery from substance use disorders. Recovery resources include access centers, drug drop off locations, medication assisted therapy, mental health centers, peer support providers, recovery housing, SUD and gambling support, and Veterans Affairs health clinics. In Des Moines, there are nearly 20 drug drop off locations to allow individuals to dispose of their unneeded prescription drugs to limit abuse of these substances. Several medical providers and organizations in the area offer medication assisted therapy to support individuals in their recovery journey. In addition to medical professionals, many mental health providers and clinics are available to support the mental health challenges associated with SUD. Community members support one another in about seven peer support programs available to those who want or need this type of support. To address the housing needs of people in recovery, there are at least six providers of recovery housing in the community. Rounding out the available recovery resources are the 20 or so SUD treatment facilities and Veterans Affairs health clinics in the community. This list of recovery resources available in Des Moines show that the community may be poised to address the needs of community members touched by SUD.



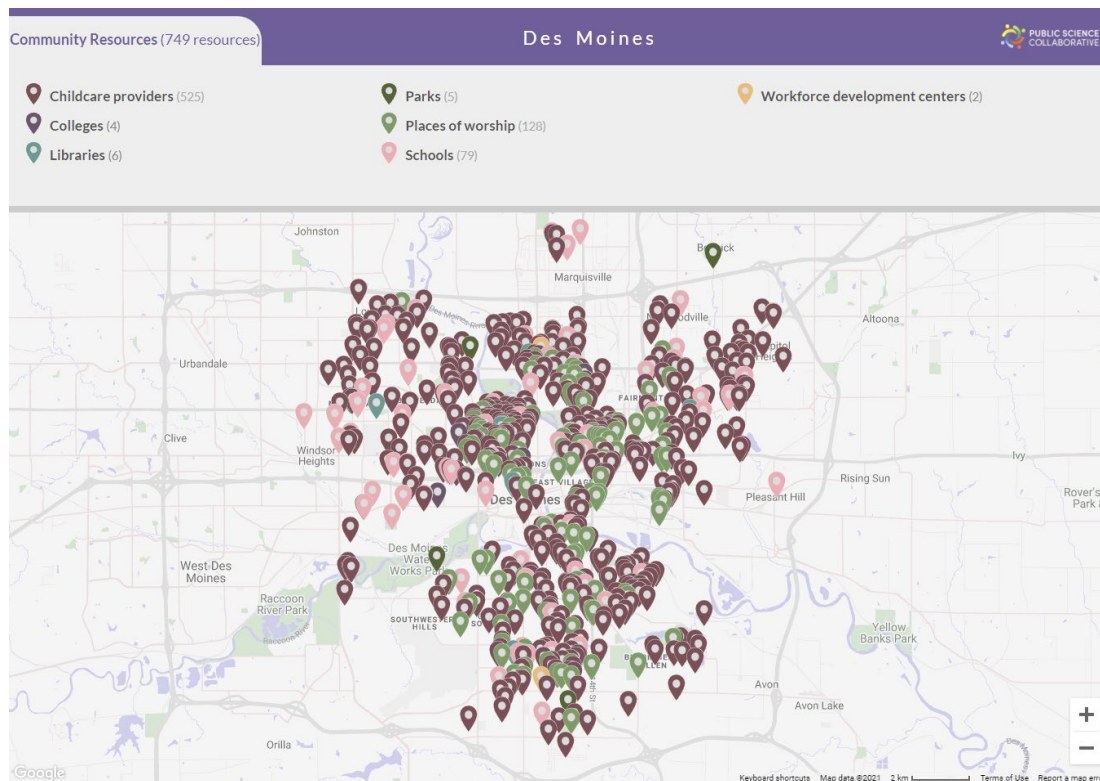
What Community Resources are Available in Your Area?

In addition to peer support meetings and clinical care, people in recovery benefit from other community resources. For example, having easy access to parks and natural areas has been shown to support substance use recovery. Participation in community groups, including religious organizations, may be a source of strength and support for many people in recovery. We have identified many additional community assets that can help people in their own recovery journey. The state of Iowa has a wide range of public and private institutions and organizations dedicated to providing health and human services, support, and activities to improve quality of life and wellbeing of all Iowans. The PSC Community Resource Locator is a utility for discovering many of these resources. Figure 4 is a screen capture of the PSC Community Resource Locator where you can see the location of some of the great resources your community offers to people in recovery. A web version of this map is available at: http://public-science.org/reportmaps/des_moines/cr.php. A full listing of these resources is provided as a table with resource name, type, and location in Appendix 4.

Des Moines has many community resources available for its residents to live their best lives and to support those in recovery from substance use disorders. In fact, the community boasts about 750 community resources, including childcare providers, universities and technical colleges, libraries, parks, places of worship, K-12 schools, and workforce development centers. Childcare resources are plentiful with about 500 providers in the community, but this may have changed since the data were collected before the Covid-19 pandemic. There are many educational resources available with multiple universities and technical colleges and nearly K-12 schools both public and private. Additionally, we found there were two public libraries and several parks in the city. Where Des Moines shined was in the availability of places of worship with approximately 128 available across the area. To cap all of these resources, the workforce development offices provide many services to those seeking employment in the community. With all of these resources in the community, Des Moines has a lot of potential to support those in the community who are recovering from substance use disorders.



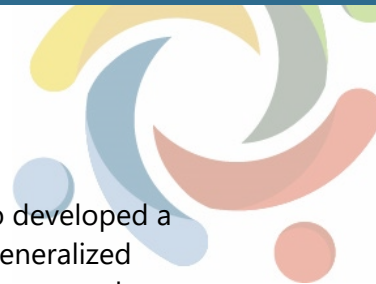
Figure 4. Community Resources in Des Moines



Which Neighborhoods in Your Community Need Additional Health Resources and Support?

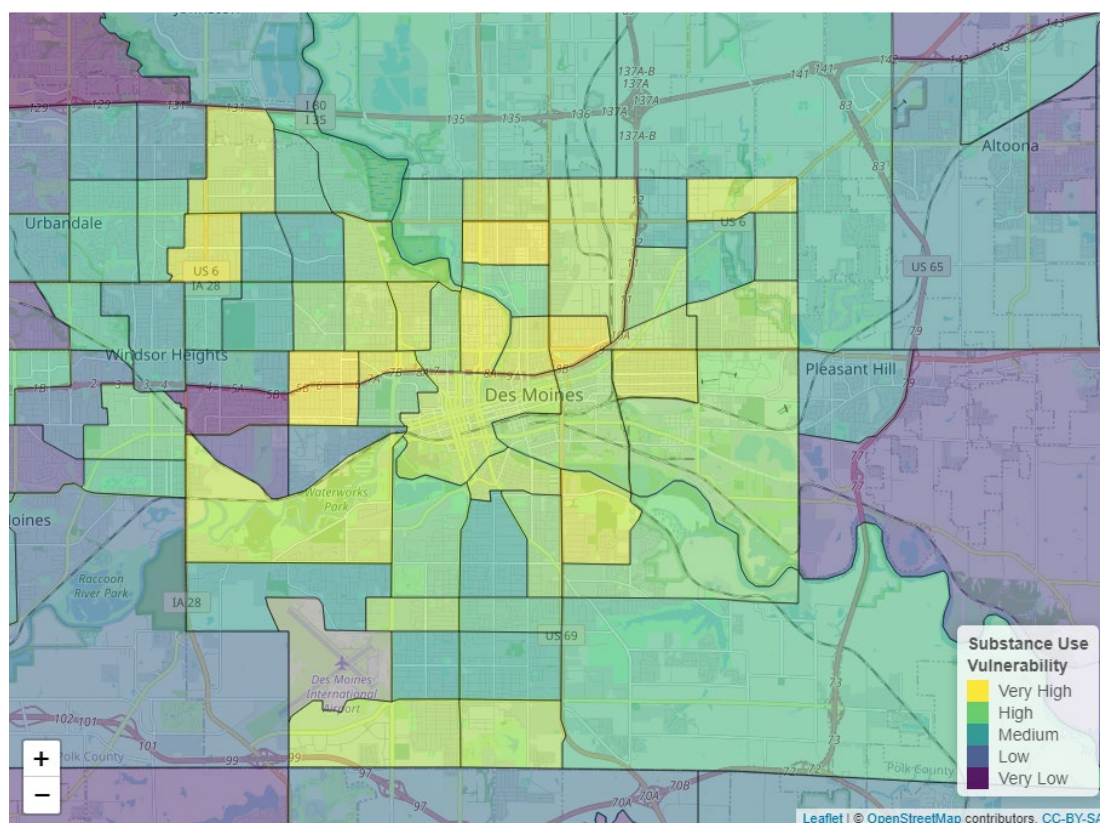
The Public Science Collaborative has developed data resources to help community organizations, local governments, and public health practitioners to more effectively target substance use prevention, treatment, and recovery interventions to the places in greatest need of resources. Geographic 'hot spots' identify places where local residents are at especially high risk for substance use disorder. We estimated statistical models using administrative data from the Treatment Episode Admissions Dataset (TEDS-A) and the National Survey of Drug Use and Health (NSDUH) to measure significant relationships between substances of misuse and socio-demographic characteristics known to affect health equity and substance use vulnerability. Neighborhood characteristics associated with each substance (e.g. methamphetamine, benzodiazepines) were overlaid with Census Bureau estimates of these same neighborhood characteristics, by census tract. Once mapped, these data help us to identify places with especially high concentrations of at-risk characteristics in need of targeted resources to reduce health inequities. You can learn more about the underlying models for this index in Appendix 1. The resulting maps are included in the pages below.

According to our models and maps, neighborhoods in Des Moines have distinctive risk profiles, with some at especially high (or low) risk of harmful use of a specific substance, such as heroin, opioids, or methamphetamine. These maps can guide public health outreach efforts and enable more targeted,



substance-specific interventions based upon known neighborhood risk factors. We also developed a city map to identify overall substance use vulnerability, which can be used to support generalized substance use prevention, treatment, and recovery interventions. According to our maps, several neighborhoods in Des Moines are especially vulnerable to heroin or methamphetamine use. These same neighborhoods are also ranked high on overall substance use vulnerability, suggesting that drug-specific interventions *and* general health resources would benefit these places and their residents. Relative to other places in Iowa, opioid use vulnerability moderately high in some neighborhoods but not nearly as much of a threat as other substances.

Figure 5. Neighborhood Vulnerability Index, All Substance Use



The population of Des Moines is at a very high risk of overall substance use. Almost every area in the city is at high or very high risk for some substance use (see Figure 5). Areas like Waterbury, Westwood, and Linden Heights to the west have a low level of vulnerability as well as West Des Moines and Urbandale to the northwest. Within the city, neighborhoods like North of Grand, Cornell Heights, and Ashbrook have the highest levels of vulnerability. Past Pleasant Hill in the east, vulnerability levels drop back to normal rates.

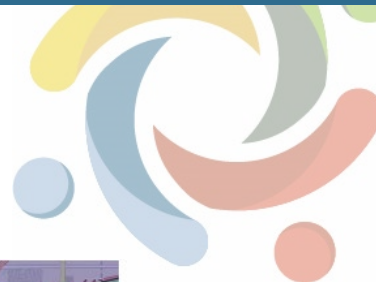
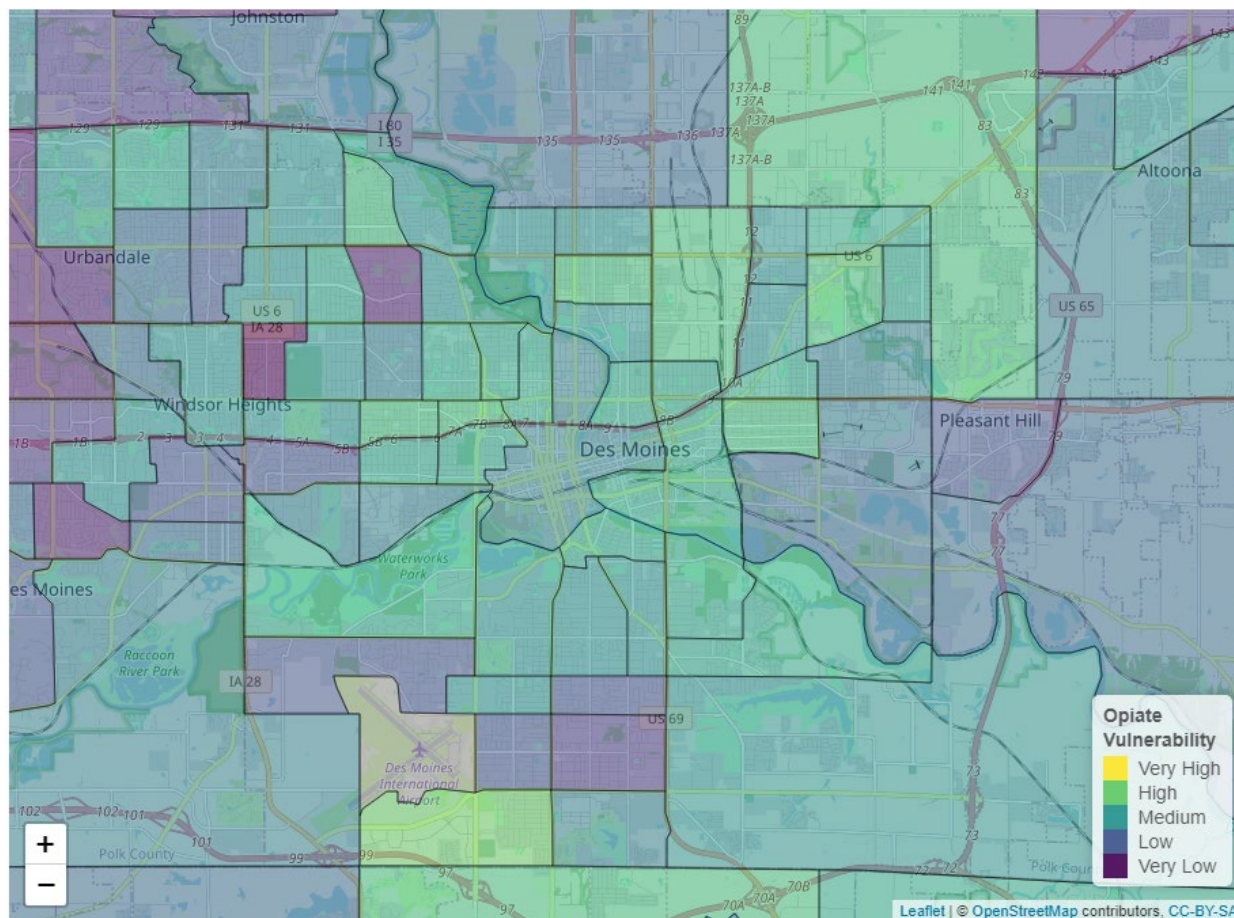


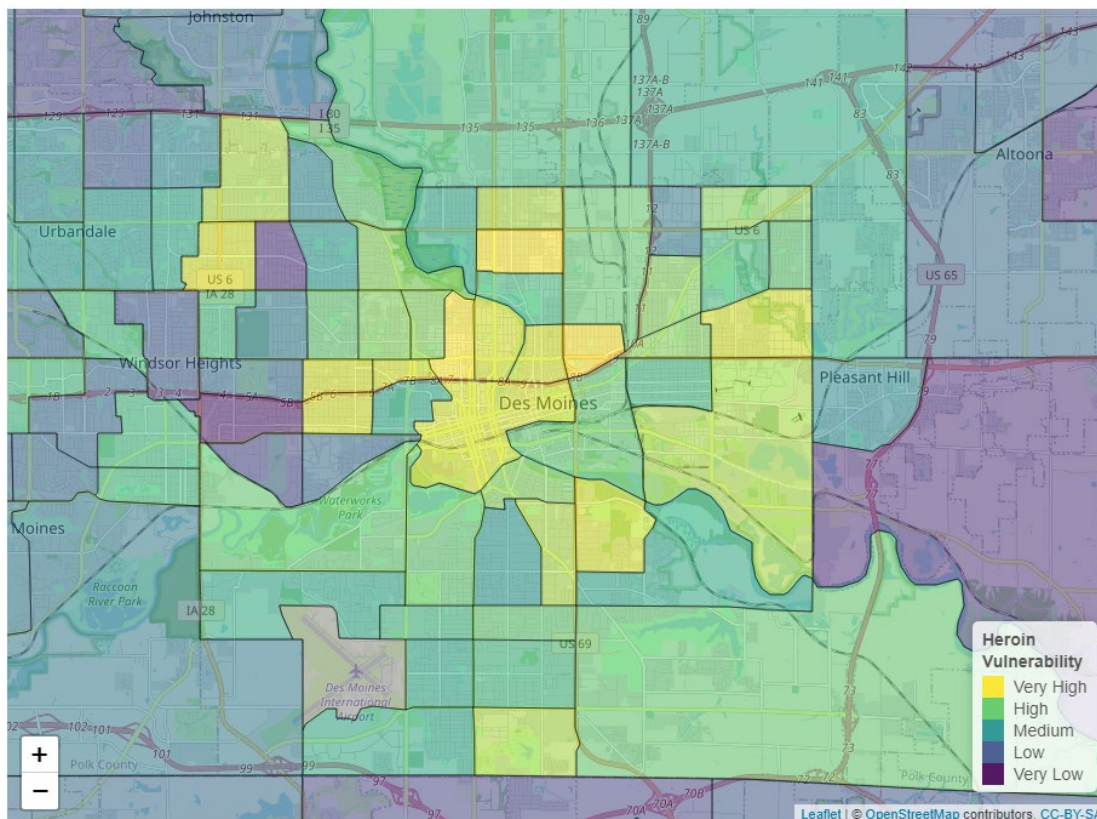
Figure 6. Neighborhood Vulnerability Index, Opioid Use



Compared to other substances and other communities in the state of Iowa, opioid use vulnerability is not a major problem for the Des Moines community (see Figure 6). Some communities to the northeast, such as Norwoodville and Berwick, have high levels of opioid vulnerability. Within the city itself, rates appear to be normal with respect to other cities in Iowa.



Figure 7. Neighborhood Vulnerability Index, Heroin Use

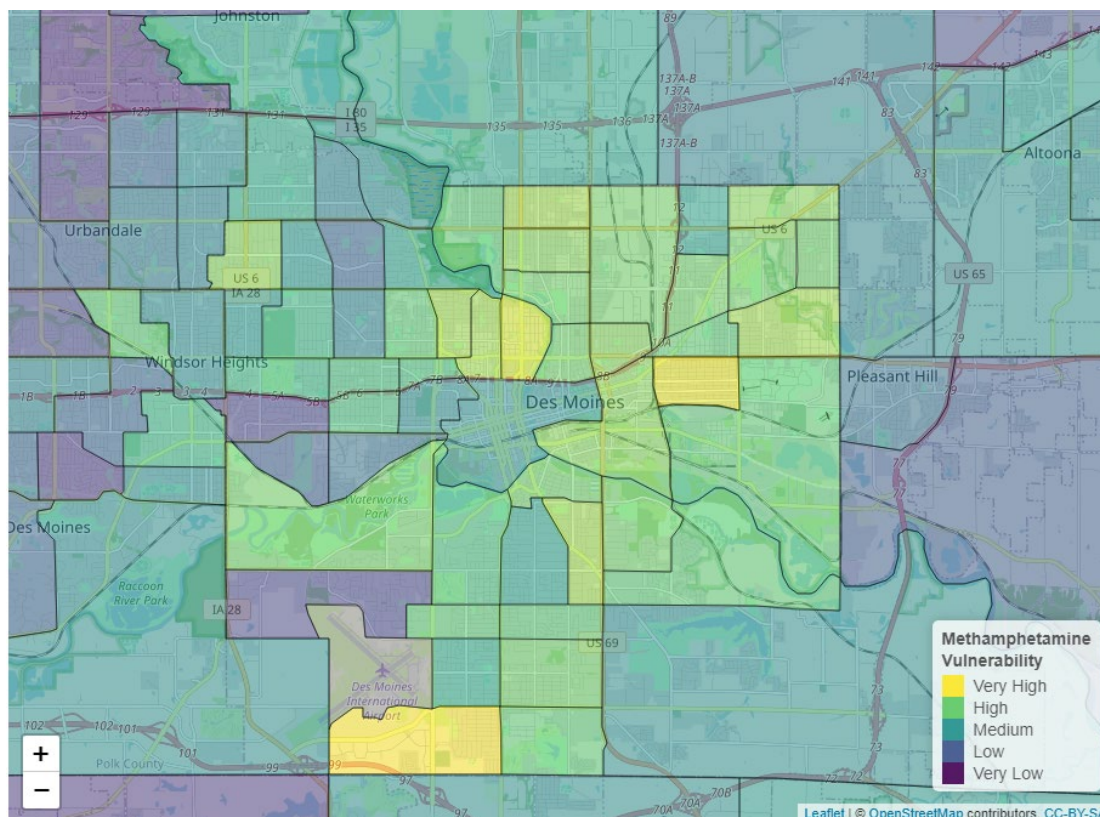


There is a very high level of heroin use vulnerability in the Des Moines community (see Figure 7). The at-risk population is centralized in Des Moines, with the level of vulnerability dropping as we move away from the city center. Areas including East Village, Union Park, and Oak Park all have high levels of risk at the center of the city. The level of vulnerability falls once we reach Pleasant Hill in the east and Windsor Heights in the west. The exception is the area north of Windsor Heights, where Merle Hay Mall is located, has one of the highest indexes on the map. Martin Luther King Jr. Park also received a 5 out of 5 on the vulnerability index, putting the people living there at the highest risk of heroin use.

The level of vulnerability for methamphetamine use in the Des Moines population is markedly lower than heroin use, but still significant (see Figure 8). Unlike some other substances, the at-risk population for methamphetamine is less in the center of the city and more to the east. The neighborhood with the highest level of vulnerability is Fairground, with some other high-risk neighborhoods surrounding it. Additionally, the area to the south of the airport is also home to a high-risk population surrounded by the airport and manufacturing.



Figure 8. Neighborhood Vulnerability Index, Methamphetamine Use

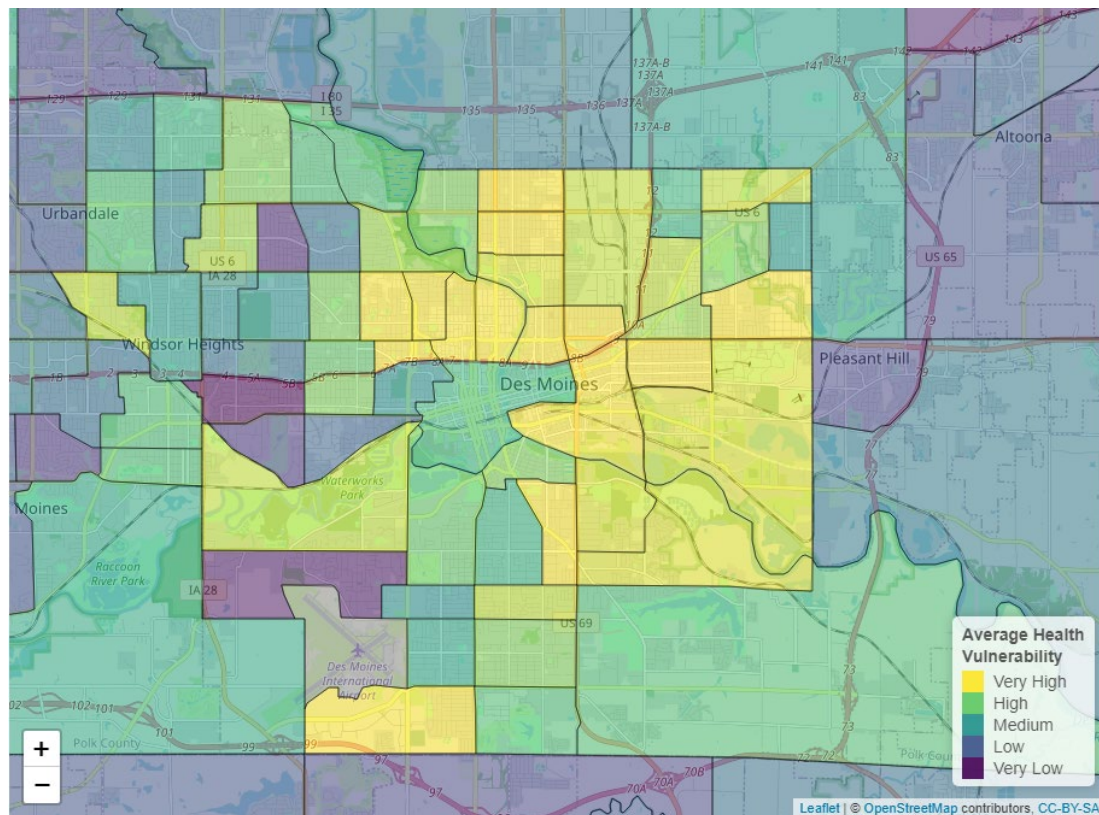


What's Driving Health Disparities in Your Community?

In addition to the neighborhood vulnerability maps above, the Public Science Collaborative created a neighborhood map to understand health disparities in Des Moines that draws on well-established social determinants of health. By social determinants, we refer to health risks that are social in origin and tend to be unevenly distributed within a city or town. For example, in places with high average levels of education and low unemployment rates, residents tend to also have better overall health (e.g. longer life span and more healthy years of living). In places where average incomes are low and the rates of single parenting are high, people often have worse health, including higher death rates due to overdose and fewer healthy days. Knowing something about where the social determinants of health support wellbeing and where their scarcity decreases wellbeing can help local community organizations and governments to better target investments to reduce health disparities between neighborhoods.



Figure 9. Neighborhood-Level Health Disparities, Social Determinants



Des Moines has several neighborhoods that carry an extremely high risk of health vulnerability. Some central neighborhoods like Woodland Heights and East Village have a lower level of risk due to social determinants (see Figure 9). Most of the others, including Drake University all the way east to Pleasant Hill, have social determinants for a very at-risk population. Areas near Windsor Heights and Pleasant Hill tend to have lower levels of vulnerability. Some of the biggest factors for the high levels of health disparity include education (44% of people in New Visions have no high school degree), English proficiency (31% of people in Capitol Park have poor English proficiency), and poverty (57% of people living in Kirkwood Glen fall below 125% of the federal poverty line).



APPENDIX 1: Data Used in this Report

Recovery Ready Community Index (RRCI)

Data Tool: Recovery Ready Community Index

Data: *PSC Meeting Finder Tool data; PSC Recovery Resources Locator Tool data; PSC Community Resources Tool data, U.S. Census Bureau American Community 5-year Estimates (ACS), 2015-2019*

The Recovery Ready Community Index was designed to give a holistic view of a community's "recovery readiness" and their ability to support people in recovery. The RRCI is constructed with four sub-measures: Breadth of Recovery Resources, Depth of Recovery Resources, Size of Recovery Culture, and Strength (Vibrancy) of Recovery Culture. You can read more about how the RRCI was developed on page two of this report. The specific recovery and community data collected to build the RRCI are detailed below and listed by name and source in Appendices 2, 3, and 4.

PSC Meeting Finder Tool

Interactive tool: <http://public-science.org/meetingfinder/>

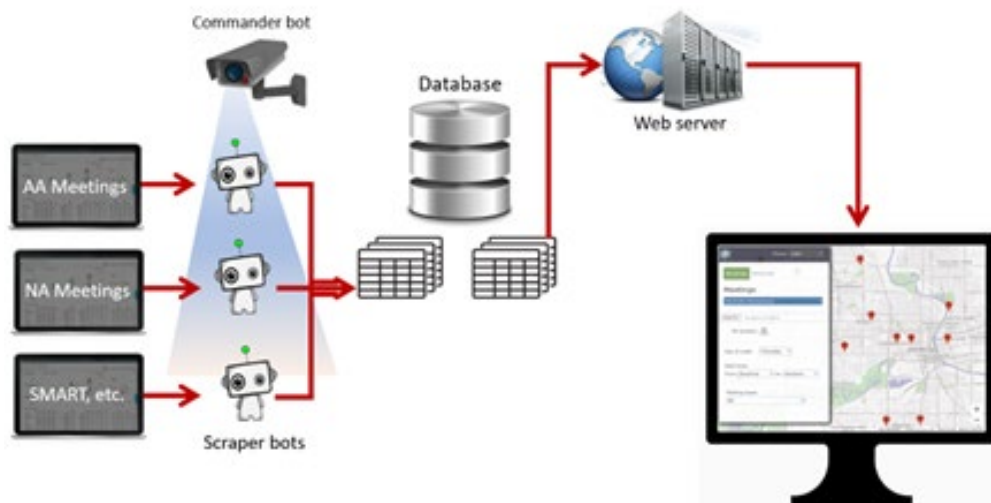
Data updated daily: *Adult Children of Alcoholics, Al-Anon/Alateen, Alcoholics Anonymous (AA), Buddhist recovery, Celebrate Recovery, CRUSH, Crystal Meth Anonymous, Dual Recovery Anonymous, Nar-Anon, Narcotics Anonymous (NA), Pill Anonymous, Refuge Recovery, and SMART Recovery*

Under the hood, the PSC Meeting Finder Tool is a data pipelining system that fetches the information of the 13 different types of recovery meetings from their original sources, and integrates them into a state map (Following Figure). This system is composed of four major logical components: (1) automated robots that oversee and 'scrape' the peer-support websites for daily updates, (2) database infrastructure, (3) the web server infrastructure, and (4) PSC Meeting Finder web-based application.

There are two types of automated program robots, called 'bots', utilized in this system: commander bots and scraper bots. The commander bot is in charge of running and logging the scraper bots, and reports to the system administrator when a scraper bot is unsuccessful. A scraper bot is in charge of scrapping the original listing websites, and populating the database with the cleaned data. The original listings might be unstructured and contain dirty data. It is the scraper bot's duty to make sure that the data that is inserted into the database is clean and structured. These data are then pulled into the users' browser by the PSC Meeting Finder Tool.



Figure 10. PSC Meeting Finder Tool- Under the hood



Recovery meetings data are gathered and cleaned from 13 web-based resources via our data pipeline system. Most of these resources utilize web scraping techniques (in Python by standard requests or packages such as Selenium and BeautifulSoup packages) as well as parsing PDF (Python: PyPDF2 package) files and XLS sheets (Python: csvkit). Table 1 identifies the name of the meeting, web resource, number of locations, and number of meetings per week.

Table 1. Peer Support Meeting Information for Des Moines

No.	Name of meeting	Web Resource	# of locations	# meetings per week
1	Adult Children of Alcoholics	https://adultchildren.org/	4	4
2	Al-Anon/Alateen	https://al-anon.org/	24	24
3	Alcoholics Anonymous	https://www.aa-iowa.org/	97	162
4	Buddhist recovery	https://www.buddhistrecovery.org/	1	1
5	Celebrate Recovery	https://locator.crgroups.info/	2	2
6	CRUSH	https://www.crushofiowa.com/	0	0



7	Crystal Meth Anonymous	https://www.crystalmeth.org/	0	0
8	Dual Recovery Anonymous	http://draonline.qwknetllc.com/	0	0
9	Nar-Anon	https://www.nar-anon.org/	0	0
10	Narcotics Anonymous	https://www.na-iowa.org/	34	39
11	Pill Anonymous	https://www.pillsanonymous.org/	0	0
12	Refuge Recovery	https://refugerecovery.org/	1	1
13	SMART Recovery	https://www.smartrecoverytest.org/	0	0
	Total		163	233

PSC Recovery Resource Locator Tool

Interactive tool: <http://public-science.org/recoveryresources/>

Data updated yearly: *Iowa Office of Drug Control Policy; Wikipedia of Iowa hospitals; Iowa Department of Public Health; Recovery and Resilience Coordinator with AmeriCorpAllTreatment.com; TransitionalHousing.org; WomenSoberHousing.com; Addicted.org; Recovery.org; Drug-rehabs.org; Iowa Association of Rural Health Clinics; U.S. Department of Veterans Affairs*

Recovery resources include access centers, drug drop off locations, hospitals, medication assisted treatment locations, mental health centers, peer support providers, recovery housing, rural clinics, SUD and problem gambling treatment locations, and Veterans Affairs health centers. To collect this data, we used a variety of public resources, including government agencies and recovery websites. Our collection of recovery resources is not necessarily exhaustive, but represents the data accessed through our initial effort and following the advice of substance use experts and researchers. This data was acquired through a variety of means, including simple downloads, manual data entry, computer reading of PDF files, and scraping websites. See the table below for the recovery resources data sources.

Public Science Collaborative Report

Table 2. Recovery Resource Locator Tool Data Sources (Downloaded Sept 2020-May 2021)

Resource	Data Source	Website Link
Access Centers	Manual Addition	
Drug Drop Off Locations	Iowa Office of Drug Control Policy	https://geodata.iowa.gov/datasets/rx-drop-off-locations-1?geometry=-101.674%2C40.504%2C-84.986%2C43.364
Hospitals	Wikipedia list of Iowa hospitals	https://en.wikipedia.org/wiki/List_of_hospitals_in_Iowa
Medication Assisted Treatment Locations	Iowa Department of Public Health	https://idph.iowa.gov/mat
Mental Health Centers	Iowa Department of Public Health	https://dhs.iowa.gov/sites/default/files/MHDDAccreditedProviders_32.pdf?082320201508
Peer Support Providers	Todd Lange, Recovery and Resilience Coordinator with AmeriCorp	email
Recovery Housing	AllTreatment.com; TransitionalHousing.org; WomenSoberHousing.com; Addicted.org; Recovery.org; Drug-rehabs.org	AllTreatment.com; TransitionalHousing.org; WomenSoberHousing.com; Addicted.org; Recovery.org; Drug-rehabs.org
Rural Clinics	Iowa Association of Rural Health Clinics	https://iarhc.org/find-a-rural-health-clinic?view=map
SUD and Problem Gambling Treatment Locations	Iowa Department of Public Health	https://idph.iowa.gov/Portals/1/userfiles/166/Licensure/All%20Licensed%20Substance%20Use%20Disorder%20-%20Problem%20Gambling%20Program%27s%20List.pdf
Veterans Affairs Health Centers	U.S. Department of Veterans Affairs	https://www.va.gov/directory/guide/state.asp?STATE=IA&dnum=ALL



PSC Community Resource Locator Tool

Interactive tool: <http://public-science.org/communityresources/>

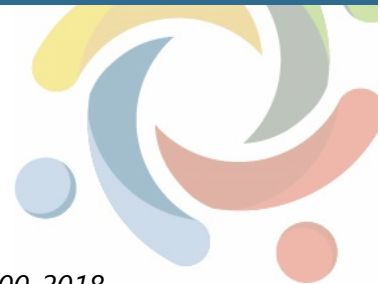
Data updated yearly: *Iowa Department of Human Services; Wikipedia of Iowa colleges; Institute of Museum and Library Services, Public Libraries Survey; MyCountyParks.com; USGS Geographic Names Information System; Iowa Dept of Education; Iowa Workforce Development*

Community resources include childcare providers, colleges, libraries, parks, places of worship, K-12 schools, and workforce development centers. To collect this data, we used a variety of public resources, including government agencies and recovery websites. Our collection of community resources is not necessarily exhaustive, but represents the data accessed following the advice of substance use experts and researchers. This data was acquired through a variety of means, including simple downloads, manual data entry, computer reading of PDF files, and scraping websites. See the table below for the community resources data sources.

Table 3. *Community Resource Locator Tool Data Sources (Downloaded Sept 2020-April 2021)*

Resource	Data Source	Website Link
Childcare Providers	Iowa Department of Human Services	http://ccmis.dhs.state.ia.us/ClientPortal/ProviderLocator.aspx
Colleges	Wikipedia list of Iowa colleges	https://en.wikipedia.org/wiki/List_of_colleges_and_universities_in_Iowa
Public Libraries	Institute of Museum and Library Services	https://www.imls.gov/research-evaluation/data-collection/public-libraries-survey
Parks	MyCountyParks.com	https://www.mycountyparks.com/County/Default.aspx
Places of Worship	USGS Geographic Names Information System	https://data.iowa.gov/Physical-Geography/Iowa-Church-Buildings/juvk-dad9
K-12 Schools	Iowa Department of Education	Public Schools: https://educateiowa.gov/documents/directories/2020/09/2020-21-iowa-public-school-building-directory Private Schools: https://educateiowa.gov/documents/directories/2020/09/2020-21-iowa-non-public-school-building-directory
Workforce Development Centers	Iowa Workforce Development	https://www.iowaworkforcedevelopment.gov/contact

Substance Use Vulnerability Index



Data Tool: Substance Use Vulnerability Index

Data: *Treatment Episode Data Set- Admission and Discharge (TEDS), 2000-2018*
National Survey on Drug Use and Health data (NSDUH), 2015-2019
U.S. Census Bureau American Community 5-year Estimates (ACS), 2015-2019

Geographic ‘hot spots’ of people at risk for substance use disorder were first predicted based on models of administrative data from Treatment Episode Data on admissions (TEDS) and the National Survey of Drug Use and Health (NSDUH) data that assessed significant relationships between key substances and socio-demographic characteristics known to affect health equity and substance use vulnerability (Tables 5-6 results below). Then, the significant predictions of risk for each substance were overlaid with Census Bureau’s American Community Survey 5-year estimates of these population characteristics to provide a visual representation of places with especially high concentrations of people with at-risk characteristics. The Census characteristics described in Table 4 below are reported in Figures 5-8.

Table 4. *Substance Use Risk Index using U.S. Census Bureau American Community 5-year Estimates (2015-19)*

	Census Table	Description
Age	B06001	Data table includes population by age categories.
Sex	B01001	Data table includes population by sex.
Race	B03002	Data table includes primary race, by ethnicity.
Education	B15002	Data table includes educational attainment level for population 25+, by sex.
Poverty Status	S1701_C01	Data table includes poverty status by age bracket and for different income levels.
Employment	B23006	Data table includes employment status, by educational attainment level.
Marital Status	B12001	Data table includes marital status by sex.
Parental Status	B09002	Data table includes parental and childcare status.
Pop Density	B06001	Data table includes population (see above, also Sex).

Note: Data was collected using the Census API a and R tidycensus package.

Public Science Collaborative Report

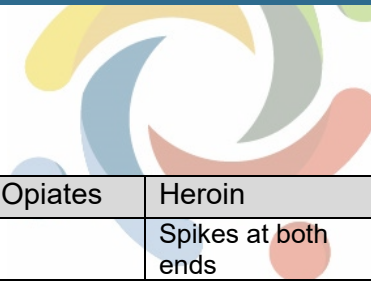


Table 5. Substance Use Risk Index using TEDS Admission Data

	Alcohol	Cannabis	Meth	Cocaine	Other Opiates	Heroin	Benzos
Age	Older, >35	Young, <35, <25	Middle age	>45	<25	Spikes at both ends	<25
Sex	Male	Male	Female			Male	Female
Race	Black, Hispanic	Black	White	Non-white	Asian, white	Non-white	White
Education		No college	No college	Some college	Some college	Some college	Some college
Poverty	Public Assistance	Public Assistance		Retired/Disabled	Wages/Salary, Retired/Disabled	Wages/Salary, Retired/Disabled	
Employment	Employed	Part time	Unemployed	Employed	Unemployed		Part time
Marital Status			Separated, Divorced, Widowed	Single	Married	Single	
Pop Density	Rural, Micro	Rural, Micro	Micro	Metro	Metro	Metro	Metro, Micro

Note: Empty cell indicates that no categories showed significantly increased risk.

Table 6. Substance Use Risk Index using NSDUH Data

	Alcohol	Cannabis	Meth	Cocaine	Other Opiates	Heroin	Benzos
Age	26-34	Young, <35, <25	Middle age	18-34	<50	26-49	18-34
Sex	Male	Male	Male	Male	Male	Male	Male
Race	White	White, Native American	White, Native American	White, Native American	White, Native American	White	White
Education	College	Some college, maybe	No college		No college	No college	
Income	>75,000	<20,000	<40,000	<20,000	<40,000	<20,000	
Employment	Employed	Unemployed	Unemployed	Unemployed	Unemployed	Unemployed	Unemployed
Marital Status	Single, separated	Single	Separated, Divorced	Single	Single	Single	Single
Pop Density	Metro	Metro	Non-metro	Metro	Metro	Metro	Metro

Note: Empty cell indicates that no categories showed significantly increased risk.



Social Determinants of Health Index

Data tool: Social Determinants of Health Index

Data: U.S. Census Bureau American Community 5-year Estimates (ACS), 2015-2019

The Social Determinants of Health Index was developed to promote health equity through providing a better understanding of the environments that create and ameliorate the multifactorial risk factors of substance misuse on priority populations. All data for the Substance Use Vulnerability Index comes from the U.S. Census Bureau American Community Survey 5-year estimates (2015-2019). The 5-year pooled dataset represents 60 months of data that enable more precise multi-year estimates. Because many of Iowa's counties have relatively small populations, the 5-year set of pooled data is the only type of ACS estimates that are available to use across all 99 counties. Following the standards set by *Washington State's Social Determinants of Health Website* (www.doh.wa.gov/DataandStatisticalReports/HealthDataVisualization/SocialDeterminantsofHealthDashboards/CensusTractSocialDeterminantsofHealth), PSC collected information on the educational attainment level, health insurance coverage, English proficiency, unemployment, and poverty status in each county and then used this information to calculate the average health index for each of Iowa's 99 counties.

Table 7. Substance Use Risk Index using U.S. Census Bureau American Community 5-year Estimates (2015-2019)

	Census Table	Description
Educational Attainment	S1501	Data table includes educational attainment level for population 25+, by sex.
Health Insurance Coverage	S2701_C05_001	Variable is percent of civilian noninstitutionalized population that is uninsured.
English Proficiency	S1601_C06_001	Variable is percent of population 5+ that speaks English less than very well.
Unemployment, 16+	S2301_C04_001	Variable is percent of population 16+ that is in the labor force, but is unemployed.
Poverty Status	S1701_C01	Data table includes poverty status by age bracket and for different income levels.

Note: Data was collected using the Census API and R tidycensus package.



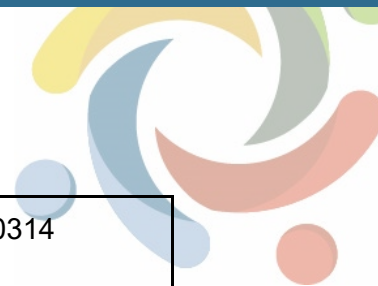
APPENDIX 2: Peer Support Contacts in Your Area

Table 8. *Des Moines Peer Support Meeting Type, Name of Peer Support Group, Number of Meetings per Week, and Location of Meetings*

Meeting Type	Name	Meetings per week	Meeting Location
AA	2000 Grand- WDSM	1	2000 Grand Ave, West Des Moines, IA 50265
AA	A.A. 24 Hours A Day- ONLINE	1	685 17th St, Des Moines, IA 50314
AA	Anything Goes	1	304 E 30th St, Des Moines, IA 50317
AA	Back to Basics	1	4300 Beaver Ave, Des Moines, IA 50310
AA	Beaverdale Group - In Person- NO ZOOM	1	5720 Urbandale Ave, Des Moines, IA 50310
AA	Broad Highway	1	3700 Cottage Grove Ave, Des Moines, IA 50311
AA	Broadlawns- Starting Over	1	2300 Euclid Ave Suite B, Des Moines, IA 50310
AA	Chapter 12 Group	1	1105 Grand Ave, West Des Moines, IA 50265
AA	Cover II Cover	1	5128 Meredith Dr, Des Moines, IA 50310
AA	Des Moines Foxhall - Beginners Meeting (Hybrid)	1	4300 Beaver Ave, Des Moines, IA 50310
AA	Des Moines Foxhall- Hybrid	1	4300 Beaver Ave, Des Moines, IA 50310
AA	Des Moines Young People's Group (Tues)	1	815 High St, Des Moines, IA 50309
AA	Des Moines Young People's Group- Hybrid	1	5720 Urbandale Ave, Des Moines, IA 50310



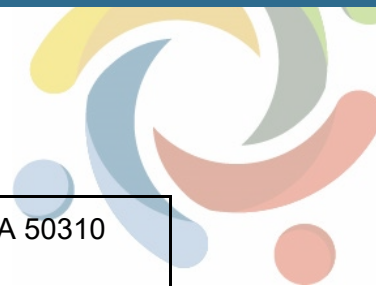
AA	Drake Saturday Morning	1	Wesley House, 2718 University Ave, Des Moines, IA 50311
AA	Drake Wed/Thurs Meeting- (Wesley House)	2	Wesley House, 2718 University Ave, Des Moines, IA 50311
AA	Early Risers Group	1	6222 University Ave, Des Moines, IA 50311
AA	East Side Study Group- Back to the Usual Place	1	3120 E 25th St, Des Moines, IA 50317
AA	Emotional Sobriety	1	1400 Pennsylvania Ave, Des Moines, IA 50316
AA	F & G	31	315 E 5th St, Des Moines, IA 50309
AA	F&G - Zoom ONLY	8	685 17th St, Des Moines, IA 50314
AA	Fort Des Moines OWI Facility	1	68 Gruber St, Des Moines, IA 50315
AA	Freedom & A New Happiness	1	2301 Hickman Rd, Des Moines, IA 50310
AA	Freedom Friday Night- Zoom is ON! 8/20	1	700 E University Ave, Des Moines, IA 50316
AA	Freedom Group	1	6205 SW 9th St, Des Moines, IA 50315
AA	Freedom Hall- Big Book Study-Mon Noon	1	Hope Lutheran, 925 Jordan Creek Pkwy, West Des Moines, IA 50266
AA	Freedom Hall- Step Study- Sat am	1	Hope Lutheran, 925 Jordan Creek Pkwy, West Des Moines, IA 50266
AA	Friday Freedom Train- NEW LOCATION!!	1	4300 Beaver Ave, Des Moines, IA 50310
AA	Friday Night Forgiveness & Meditation	1	414 31st St, Des Moines, IA 50312
AA	Friday Nite Non-Smoker Group (St. Paul's)	1	815 High St, Des Moines, IA 50309



AA	Friends of Bill - Holiday Inn (Smoke Free)	1	1050 6th Ave, Des Moines, IA 50314
AA	Function in the Junction	1	217 5th St, West Des Moines, IA 50265
AA	Ginger's Misfits	1	3711 Easton Blvd, Des Moines, IA 50317
AA	GLBT & Friends (Wesley House)	5	Wesley House, 2718 University Ave, Des Moines, IA 50311
AA	GLBT on Ingersoll	2	4126 Ingersoll Ave, Des Moines, IA 50312
AA	Grapeviners	1	6222 University Ave, Des Moines, IA 50311
AA	Grimes Zoom A.A.Mtg- ONLINE only	1	685 17th St, Des Moines, IA 50314
AA	High & Dry Group	1	600 6th Ave, Des Moines, IA 50309
AA	Hollywood Squares A.A. Meeting (Online Only)	3	685 17th St, Des Moines, IA 50314
AA	Honesty Hour	1	4801 Franklin Ave, Des Moines, IA 50310
AA	Hope & Reflection	1	6222 University Ave, Des Moines, IA 50311
AA	Hope Elim (formerly-Hope on Ingersoll)	1	2500 University Ave, Des Moines, IA 50311
AA	How It Works	1	1660 60th St, West Des Moines, IA 50266
AA	Inner City Group	1	801 University Ave, Des Moines, IA 50314
AA	Jaywalker Group- InPerson starting 4/1/21 Masks/Social Distancing	1	5720 Urbandale Ave, Des Moines, IA 50310
AA	Keep It Simple Sister	1	1400 Pennsylvania Ave, Des Moines, IA 50316



AA	Keep It Simple Sunday-Hybrid begins 7/4	1	Urbandale Ave, Des Moines, IA
AA	Kingdom Living Group-	1	2340 E 9th St, Des Moines, IA 50316
AA	Ladies Night-	1	4501 Mills Civic Pkwy, West Des Moines, IA 50265
AA	LGBTQ & Friends (Online)	1	685 17th St, Des Moines, IA 50314
AA	LGBTQ & Friends (Online-SunNoon)	1	685 17th St, Des Moines, IA 50314
AA	Meeting Makers Make It	1	2500 University Ave, Des Moines, IA 50311
AA	Mid-Week Meditation	1	700 E University Ave, Des Moines, IA 50316
AA	Miracles on 63rd - At Windsor United Methodist	1	6222 University Ave, Des Moines, IA 50311
AA	Monday Night BB & Step Meeting- New Temp Location 8/3/20	1	6575 Indianola Ave, Des Moines, IA 50320
AA	Monday Night Step Meeting-Zoom Suspended!	1	700 E University Ave, Des Moines, IA 50316
AA	Monday Nite Stag- Men Only-	1	5720 Urbandale Ave, Des Moines, IA 50310
AA	Monday Nooner's Group	1	600 6th Ave, Des Moines, IA 50309
AA	New Beginnings at Covenant	1	1025 28th St, West Des Moines, IA 50266
AA	New Hope Group- Beaver	1	4525 Beaver Ave, Des Moines, IA 50310
AA	New Hope Group-Hybrid	1	Hope Lutheran, 925 Jordan Creek Pkwy, West Des Moines, IA 50266
AA	New Pair of Glasses	1	4300 Beaver Ave, Des Moines, IA 50310



AA	New Pair of Glasses- ONLINE ONLY	1	4300 Beaver Ave, Des Moines, IA 50310
AA	Primary Purpose Group. - IN PERSON	1	6222 University Ave, Des Moines, IA 50311
AA	Promising Beginnings- In Person 4/28/21	1	7200 SE 5th St, Des Moines, IA 50315
AA	Ray Harrison Dinner Group	1	1990 Grand Ave, West Des Moines, IA 50265
AA	RRRR Group	1	3829 Grand Ave, Des Moines, IA 50312
AA	Saturday AM Step Study (Online)	1	685 17th St, Des Moines, IA 50314
AA	Saturday Morning Men's Basics- Live In Person	1	6222 University Ave, Des Moines, IA 50311
AA	Saturday Morning Men's Basics- Zoom Only	1	617 17th St, Des Moines, IA 50314
AA	Saturday Night South Side Step Study	1	3301 SW 9th St, Des Moines, IA 50315
AA	Saturday Night Speaker Meeting- ONLINE ONLY	1	685 17th St, Des Moines, IA 50314
AA	Saturday Nite Solutions	1	1105 Grand Ave, West Des Moines, IA 50265
AA	Solutions Group	1	1750 48th St, Des Moines, IA 50310
AA	Sometimes Slowly	1	3650 Cottage Grove Ave, Des Moines, IA 50311
AA	Southridge Big Book Study	1	6411 SE 5th St, Des Moines, IA 50315
AA	SouthSide Grapevine Group	1	6205 SW 9th St, Des Moines, IA 50315
AA	SouthSide Step Study	1	3820 SW 9th St, Des Moines, IA 50315



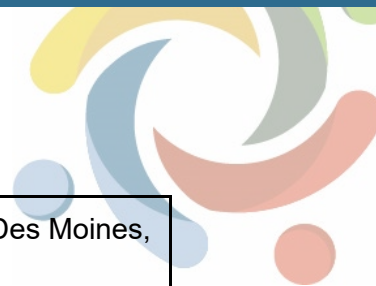
AA	Stan's Clan	1	700 E University Ave, Des Moines, IA 50316
AA	Step Group	1	3424 Forest Ave, Des Moines, IA 50311
AA	TGIS Step Study	1	6222 University Ave, Des Moines, IA 50311
AA	The Deal- Men's Group	1	1400 Pennsylvania Ave, Des Moines, IA 50316
AA	The Grand Journey	1	4126 Ingersoll Ave, Des Moines, IA 50312
AA	There Is A Solution	1	720 Grand Ave, West Des Moines, IA 50265
AA	There Is A Solution-Online ONLY	1	720 Grand Ave, West Des Moines, IA 50265
AA	Three Legacies- Hybrid/New Location/ Begins 3/8/21	1	4300 Beaver Ave, Des Moines, IA 50310
AA	Thursday Noon Step Group	1	3829 Grand Ave, Des Moines, IA 50312
AA	TNT Group	1	6001 SE 5th St, Des Moines, IA 50315
AA	Turning Point	1	4801 Franklin Ave, Des Moines, IA 50310
AA	Two Rivers Recovery	1	6222 University Ave, Des Moines, IA 50311
AA	Two Rivers Recovery- ONLINE ONLY(Separate Meeting)	1	685 17th St, Des Moines, IA 50314
AA	United in Recovery Group- Starts Aug. 26th!	1	1338 9th St, Des Moines, IA 50314
AA	URS Group	1	1105 Grand Ave, West Des Moines, IA 50265



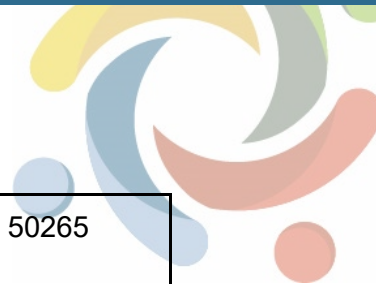
AA	Vets Meeting	2	3600 30th St, Des Moines, IA 50310
AA	Village People	1	323 E Locust St, Des Moines, IA 50309
AA	West Des Moines Group-Goes Hybrid June 22	1	1105 Grand Ave, West Des Moines, IA 50265
AA	White House Group	20	1400 Pennsylvania Ave, Des Moines, IA 50316
AA	WolfPack- Women's (Online-)	1	1400 Pennsylvania Ave, Des Moines, IA 50316
ACA	(IA0035)	1	700 E University Ave, Des Moines, IA 50316
ACA	(IA0039)	1	700 E University Ave, Des Moines, IA 50316
ACA	Saturday Noon Aca (IA031)	1	700 E University Ave, Des Moines, IA 50316
ACA	Thursday Evening (IA0037)	1	700 E University Ave, Des Moines, IA 50316
AIAnon	AFG Adult Children	1	414 31st St, Des Moines, IA 50312
AIAnon	Back To Basics AFG	1	3938 Fleur Dr, Des Moines, IA 50321
AIAnon	Courage To Change AFG	1	4300 Beaver Ave, Des Moines, IA 50310
AIAnon	Fresh Start AFG	1	1025 28th St, West Des Moines, IA 50266
AIAnon	Friday Night AFG Friends Literature Study	1	1115 Grand Ave, West Des Moines, IA 50265
AIAnon	Friday Night High Hopes-Men's Group AFG	1	700 E University Ave, Des Moines, IA 50316
AIAnon	Friday Night White House AFG	1	1400 Pennsylvania Ave, Des Moines, IA 50316



AlAnon	Frisky Friday AFG	1	815 High St, Des Moines, IA 50309
AlAnon	Keep It Simple AFG	1	939 Office Park Rd #113, West Des Moines, IA 50265
AlAnon	Monday Night AFG	1	3829 39th St, Des Moines, IA 50310
AlAnon	Monday Night Parents AFG	1	700 E University Ave, Des Moines, IA 50316
AlAnon	New Hope AFG	1	Hope Lutheran, 925 Jordan Creek Pkwy, West Des Moines, IA 50266
AlAnon	New Hope Alateen	1	Hope Lutheran, 925 Jordan Creek Pkwy, West Des Moines, IA 50266
AlAnon	Parents And Others AFG	1	700 E University Ave, Des Moines, IA 50316
AlAnon	Saturday Night Step Study AFG	1	3301 SW 9th St, Des Moines, IA 50315
AlAnon	Seasons Of Hope AFG	1	4126 Ingersoll Ave, Des Moines, IA 50312
AlAnon	Serenity Kids	1	815 High St, Des Moines, IA 50309
AlAnon	Thursday Night Step Study AFG	1	3820 SW 9th St, Des Moines, IA 50315
AlAnon	Together Alateen	1	3820 SW 9th St, Des Moines, IA 50315
AlAnon	Tuesday Morning Step Study AFG	1	4525 Beaver Ave, Des Moines, IA 50310
AlAnon	Tuesday Night AFG	1	1400 Pennsylvania Ave, Des Moines, IA 50316
AlAnon	Tuesday Night West Des Moines AFG	1	1115 Grand Ave, West Des Moines, IA 50265
AlAnon	Wednesday Night Step Study AFG	1	939 Office Park Rd #113, West Des Moines, IA 50265



AlAnon	Wednesday Noon Step Study	1	939 Office Park Rd #113, West Des Moines, IA 50265
BR	Refuge Recovery	1	1818 48th St, Des Moines, IA 50310
CR	DSM First Assembly of God	1	2725 Merle Hay Rd., Des Moines, IA 50310
CR	Lutheran Church of Hope	1	925 Jordan Creek Parkway, West Des Moines, Iowa 50265 United States
NA	Addicts for Addicts	1	3322 E 25th St, Des Moines, IA 50317
NA	Basic Meditation	1	2718 University Ave, Des Moines, IA 50311
NA	Basic Text Study	1	6th Ave / Locust St, DSM, Des Moines, IA 50309
NA	Central City	2	601 Forest Ave, Des Moines, IA 50314
NA	Clean Living	1	2474 University Ave, Des Moines, IA 50311
NA	Closed for Repairs	1	2404 Easton Blvd, Des Moines, IA 50317
NA	Eastside Recovery	1	2559 E Euclid Ave, Des Moines, IA 50317
NA	Found a Way Out	1	1201 25th St, Des Moines, IA 50311
NA	Found a Way Out	1	2474 University Ave, Des Moines, IA 50311
NA	Found A Way Out	1	2500 University Ave, Des Moines, IA 50311
NA	Free on Friday	1	700 E University Ave, Des Moines, IA 50316
NA	Freedom	1	3600 30th St, Des Moines, IA 50310



NA	Living Clean	1	217 5th St, West Des Moines, IA 50265
NA	NA Staying in the Moment	5	6th Ave / Locust St, DSM, Des Moines, IA 50309
NA	New Beginnings	1	3700 Cottage Grove Ave, Des Moines, IA 50311
NA	Off the Chain	1	3816 36th St, Des Moines, IA 50310
NA	Parents In Action	1	4300 Beaver Ave, Des Moines, IA 50310
NA	Raw & Real	1	2340 E 9th St, Des Moines, IA 50316
NA	Recover Like a Girl	1	2500 University Ave, Des Moines, IA 50311
NA	Saturday Night Live	1	6115 SW 9th St, Des Moines, IA 50315
NA	Saturday Night Salvation	1	3322 E 25th St, Des Moines, IA 50317
NA	SIS (Serenity in Sisterhood)	1	6205 SW 9th St, Des Moines, IA 50315
NA	Stick & Stay	1	901 Cherry St, Des Moines, IA 50309
NA	Sunday Night	1	2300 Euclid Ave, Des Moines, IA 50310
NA	Sunday Night NA	1	2300 Euclid Ave, Des Moines, IA 50310
NA	The Journey Continues	1	700 E University Ave, Des Moines, IA 50316
NA	The Spirit of Our Traditions	1	700 E University Ave, Des Moines, IA 50316
NA	Thursday Night Outlaws	1	3816 36th St, Des Moines, IA 50310



NA	Thursday Night Thunder	1	133 E 2nd St, Des Moines, IA 50309
NA	Thursday Nooner	1	2474 University Ave, Des Moines, IA 50311
NA	Truth or Consequences	1	1800 Bell Ave, Des Moines, IA 50315
NA	Truth or Consequences	1	1800 Bell Ave, Des Moines, IA 50315
NA	Unity in Action	1	3816 36th St, Des Moines, IA 50310
NA	We Came to Believe	1	700 E University Ave, Des Moines, IA 50316
RR	Refuge Recovery	1	1750 48th St, Des Moines, IA 50310

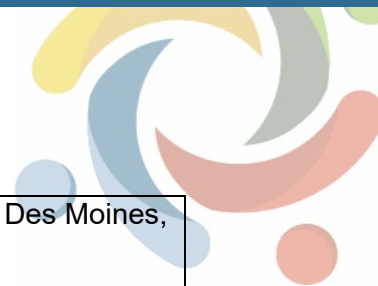
Note: Meeting type abbreviations are as follows: ACA= Adult Children of Alcoholics; AlAnon= Al-Anon/Alateen; BR= Buddhist Recovery; CR= Celebrate Recovery; NA= Narcotics Anonymous; RR= Refuge Recovery.



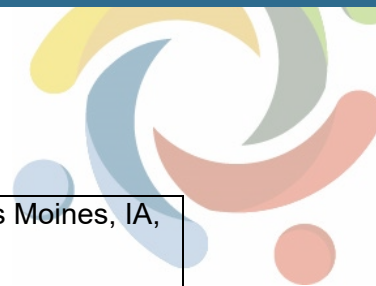
APPENDIX 3: Recovery Resources in Your Area

Table 9. Des Moines Recovery Resource Type, Name of Business, and Address of Business

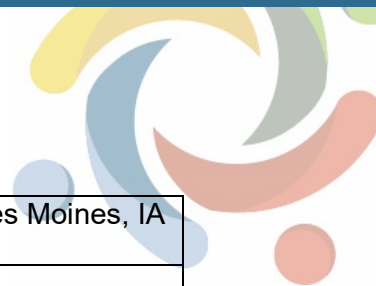
Resource	Name	Address
Drug Drop Off Location	Broadlawns Medical Center	1801 Hickman Road, Des Moines, Iowa 50314
Drug Drop Off Location	Des Moines Police Department	25 East 1st Street, Des Moines, Iowa 50309
Drug Drop Off Location	Hy-Vee Drugstore Pharmacy	4100 University Ave, Des Moines, Iowa 50311
Drug Drop Off Location	Hy-Vee Pharmacy	2540 E Euclid Ave, Des Moines, Iowa 50317
Drug Drop Off Location	Hy-Vee Pharmacy	4605 Fleur Dr, Des Moines, Iowa 50321
Drug Drop Off Location	Hy-Vee Pharmacy #1 (1136)	3330 Martin Luther King Jr. Expressway, Des Moines, Iowa 50310
Drug Drop Off Location	Hy-Vee Pharmacy #3 (1142)	3221 SE 14th Street, Des Moines, Iowa 50320
Drug Drop Off Location	Hy-Vee Pharmacy #5 (1151)	1107 SE Army Post Road, Des Moines, Iowa 50315
Drug Drop Off Location	Hy-Vee Pharmacy #6 (1155)	420 Court Avenue, Des Moines, Iowa 50309
Drug Drop Off Location	Medicap Pharmacy	1300 E. 14th Street, Des Moines, Iowa 50316
Drug Drop Off Location	MercyOne Des Moines Medical Center	1111 6th Avenue, Des Moines, Iowa 50314
Drug Drop Off Location	Polk County Sheriff Office	6023 NE 14th St, Des Moines, Iowa 50313
Drug Drop Off Location	United Community Services	4908 Franklin Avenue, Des Moines, Iowa 50310
Drug Drop Off Location	Walgreens	3140 SE 14th Street, Des Moines, Iowa 50320
Drug Drop Off Location	Walgreens	4415 Douglas Ave, Des Moines, Iowa 50310
Drug Drop Off Location	Walgreens	104 E Euclid Ave, Des Moines, Iowa 50313
Drug Drop Off Location	Walgreens	2545 E Euclid Ave, Des Moines, Iowa 50317
Hospital	Broadlawns Medical Center	1801 Hickman Rd, Des Moines, IA 50314
Hospital	MercyOne Des Moines Medical Center	1111 6th Ave, Des Moines, IA 50314
Hospital	Select Specialty Hospital-Des Moines	Main, 1111 6th Ave 4th Floor, Des Moines, IA 50314



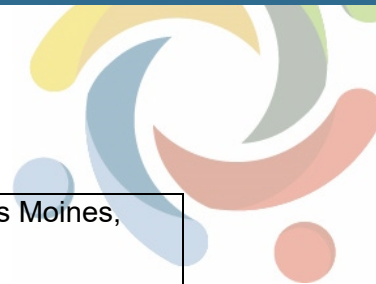
Hospital	UnityPoint Health-Blank Children's Hospital	1200 Pleasant St, Des Moines, IA 50309
Hospital	UnityPoint Health-Iowa Lutheran Hospital	700 E University Ave, Des Moines, IA 50316
Hospital	UnityPoint Health-Iowa Methodist Medical Center	1200 Pleasant St, Des Moines, IA 50309
Medication Assisted Treatment	Becky Johnson NP - Primary Health Care, Inc.	3509 East 29th Street, Des Moines, IA, 50317
Medication Assisted Treatment	Dr. Kenneth Moon D.O. - Highland Park Family Physicians	1530 East Euclid Avenue, Des Moines, IA, 50313
Medication Assisted Treatment	Dr. Dennis Weis M.D. - Powell CDC	700 East University Avenue, Des Moines, IA, 50316
Medication Assisted Treatment	Sara Lockner NP - Powell CDC Iowa Lutheran Hospital	700 East University Avenue, Des Moines, IA, 50316
Medication Assisted Treatment	Dr. Jolene Smith D.O. - Medical Center Anesthesiologists	411 Laurel Street, Des Moines, IA, 50314
Medication Assisted Treatment	Daniel Moyse - Pain Specialists of Iowa	411 Laurel Street, Des Moines, IA, 50314
Medication Assisted Treatment	Dr. Ahmar Butt M.D. - Broadlawns Medical Center	1801 Hickman Road, Des Moines, IA, 50314
Medication Assisted Treatment	Center for Behavioral Health, Iowa Inc.	1200 University, Des Moines, IA, 50314
Medication Assisted Treatment	Dr. Christopher Covert D.O. - Primary Health Care, Inc.	1200 University, Des Moines, IA, 50314
Medication Assisted Treatment	Quentin Chambers NP - Alpha Allied Mental Health Services	699 Walnut Street, Des Moines, IA, 50309
Medication Assisted Treatment	Jennifer Blume NP - Iowa Lutheran Hospital, Powell Chemical Dependency	700 E. University, Des Moines, IA, 50315
Medication Assisted Treatment	Dr. Christopher Covert D.O. - Covert Action	1223 Center St., Des Moines, IA, 50309
Medication Assisted Treatment	Dr. David Berg D.O. - VA Central Iowa Health System	3600 30th Street, Des Moines, IA, 50310
Medication Assisted Treatment	Roseanne Hixenbaugh NP - VA Central Iowa Health System	3600 30th St., Des Moines, IA, 50310



Medication Assisted Treatment	Dr. Lori Suvalsky M.D. - VA Central Iowa Health System	3600 30th St., Des Moines, IA, 50310
Medication Assisted Treatment	Kathleen Fitzgerald NP - St. Gregory Retreat Center	5875 Fleur Dr, Des Moines, IA, 50312
Medication Assisted Treatment	Dr. Frank Filippelli D.O. - UCS Healthcare	4908 Franklin Avenue, Des Moines, IA, 50310
Medication Assisted Treatment	Dr. David Huante M.D. - UCS Healthcare	4908 Franklin Avenue, Des Moines, IA, 50310
Medication Assisted Treatment	Dr. Charles Wadle D.O. - Broadlawns Medical Center	1801 Hickman Road, Des Moines, IA, 50322
Mental Health Center	American Baptist Homes of the Midwest DBA Crest Services	3015 Merle Hay Road, Des Moines, IA
Mental Health Center	Child Guidance Center	808 5th Avenue, Des Moines, IA
Mental Health Center	Community Support Advocates	6000 Aurora Ave, Des Moines, IA
Mental Health Center	Department of Human Services Case Mgt	400 South West 8th, Des Moines, IA
Mental Health Center	Easter Seals	2920 30th St, Des Moines, IA
Mental Health Center	Eyerly-Ball Community Mental Health Services	945 19th Street, Des Moines, IA
Mental Health Center	Eyerly-Ball Community Mental Health Services	1301 Center Street, Des Moines, IA
Mental Health Center	HOPE (Honoring Opportunities for Personal Empowerment)	3850 Merle Hay Rd. - Suite 606, Des Moines, IA
Mental Health Center	Innovative Counseling and Consulting	1063 14th Place, Des Moines, IA
Mental Health Center	Life Works Inc.	600 42nd Street, Des Moines, IA
Mental Health Center	Lutheran Services in Iowa, Inc.	3116 University Avenue, Des Moines, IA
Mental Health Center	MOSAIC Family Counseling Center, Inc.	5005 Douglas, Des Moines, IA
Mental Health Center	New Beginnings Counseling Services, LLC.	3811 38th Street, Des Moines, IA
Mental Health Center	New sight, Inc.	2340 Euclid Ave, Des Moines, IA
Mental Health Center	Next Step Counseling Services, Inc.	3812 Ingersoll, Des Moines, IA



Mental Health Center	Sampson Family Therapy Svcs, LLC	309 Court Ave, Des Moines, IA
Mental Health Center	Synergy	Des Moines, IA
Mental Health Center	The Empowerment Center	699 Walnut /Mailing Address: 3046 Briarcliffe Rd Suite 14 Atlanta Ga 30349, Des Moines, IA
Mental Health Center	United Community Services, Inc.	4908 Franklin Ave., Des Moines, IA
Mental Health Center	Woodward Community Based Services	611 5th Ave., Des Moines, IA
Peer Support Provider	Eyerly Ball	945 19th Street, Des Moines, IA
Peer Support Provider	Broadlawns	2300 Euclid Avenue, Suite B, Des Moines, IA
Peer Support Provider	Eyerly Ball	401 East Court Avenue, Des Moines, IA
Peer Support Provider	Office of Consumer Affairs	3839 Merle Hay Road Suite 229, Des Moines, IA
Peer Support Provider	Optimae	511 E. Grand, Suite C, Des Moines, IA
Peer Support Provider	Passageway	6000 Grand Avenue, Suite G, Des Moines, IA
Peer Support Provider	Veterans Administration	3600 30th Street 116a, Des Moines, IA
Recovery Housing	Bernie Lorenz Recovery Inc	4014 Kingman Boulevard, Des Moines, IA
Recovery Housing	House of Mercy	1409 Clark St, Des Moines, IA
Recovery Housing	Iowa Lutheran Hospital/Powell Chemical Dependency Center	700 East University Ave, 4th Floor, Des Moines, IA
Recovery Housing	Prelude Behavioral Services	3806 Easton Blvd, Des Moines, IA
Recovery Housing	Prelude Bernie Lorenz Recovery	4014 Kingman Blvd., Des Moines, IA
Recovery Housing	Beacon of Life Transitional Housing	1717 Woodland Ave, Des Moines, IA
SUD and Problem Gambling Treatment Location	Alternative Interventions, LLC	3116 Ingersoll, Suite 4 Des Moines, 50312
SUD and Problem Gambling Treatment Location	Avery Comprehensive Services (ACS)	309 Court Avenue Suite 218 Des Moines, 50309
SUD and Problem Gambling Treatment Location	Bridges of Iowa	130 E 3rd Street Des Moines, 50309



SUD and Problem Gambling Treatment Location	Broadlawns Medical Center New Connections	1801 Hickman Des Moines, 50314
SUD and Problem Gambling Treatment Location	Center for Behavioral Health Iowa, Inc. (CBH)	1200 University Suite 106 Des Moines, 50314
SUD and Problem Gambling Treatment Location	Children and Families of Iowa	1111 University Avenue, Des Moines, IA 50314
SUD and Problem Gambling Treatment Location	Children and Families of Iowa	2331 E. 8th Street Des Moines, 50316
SUD and Problem Gambling Treatment Location	Covert Action	1223 Center Street, Suite 22 Des Moines, 50309
SUD and Problem Gambling Treatment Location	Employee & Family Resources (EFR)	505 5th Avenue, Ste. 600 Insurance Exchange Bldg Des Moines, 50309
SUD and Problem Gambling Treatment Location	Eyerly Ball Community Mental Health Center	1301 Center Street Des Moines, 50309 Corporate Office: 945 19th Street Des Moines, 50309
SUD and Problem Gambling Treatment Location	Fifth Judicial District Substance Abuse Programs	1000 Washington Ave Des Moines, 50315 Men S Facility: 68 Thayer Street Des Moines, 50315 Women S Facility: 1917 Hickman Des Moines, 50314
SUD and Problem Gambling Treatment Location	House of Mercy	1409 Clark Street Des Moines, 50314
SUD and Problem Gambling Treatment Location	Infinity Assessment & Therapy Services, LLC	100 E. Euclid Ave. Ste. 131 Des Moines, 50313
SUD and Problem Gambling Treatment Location	Lloyd s Counseling, Inc.	3832 Douglas Avenue Des Moines, 50310
SUD and Problem Gambling Treatment Location	Mercy First Step Mercy Recovery Center	1750 48th Street Des Moines, 50310
SUD and Problem Gambling Treatment Location	New Sight, Inc.	2340 Euclid Avenue, Des Moines, IA 50310
SUD and Problem Gambling Treatment Location	Orchard Place Child Guidance Center PACE Juvenile Justice Center	925 SW Porter Avenue Des Moines, 50315-0304 620 8th Street Des Moines, 50309
SUD and Problem Gambling Treatment Location	Powell Chemical Dependency Program	700 E. University 1lh 4 Mid Des Moines, 50316



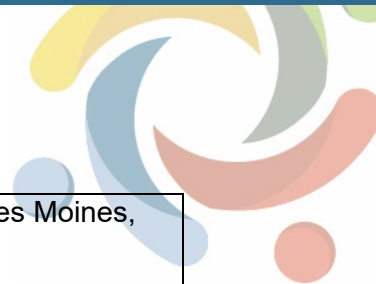
SUD and Problem Gambling Treatment Location	United Community Services, Inc. (UCS)	4908 Franklin Avenue Des Moines, 50309- 4615
SUD and Problem Gambling Treatment Location	Urban Dreams S.A.F.E.	1410 6th Avenue Des Moines, 50314
VA Health Center	VA Central Iowa Health Care System	3600 30th Street, Des Moines, IA 50310-5774
VA Health Center	Des Moines Vet Center	1821 22nd Street Unit 115, Des Moines, IA 50266



APPENDIX 4: Community Resources in Your Area

Table 10. *Des Moines Community Resource Type, Name of Business, and Address of Business*

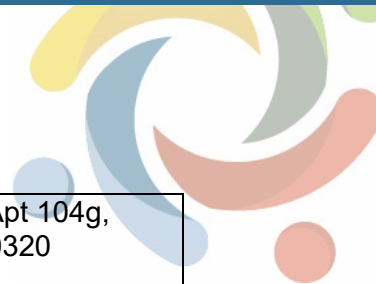
Resource	Name	Address
Childcare Provider	Abebech Meshesha	4032 Hubbell Ave Apt 285, Des Moines, IA 50317
Childcare Provider	Elizabeth Ashoro	3320 E 12th St, Des Moines, IA 50316
Childcare Provider	Elizabeth Brown	4038 53rd St, Des Moines, IA 50310
Childcare Provider	Elizabeth Koepplin	3906 Bel Aire Rd, Des Moines, IA 50310
Childcare Provider	Ellis I. Levitt Boys & Girls Club	705 E University Ave, Des Moines, IA 50316
Childcare Provider	Elvira Guerrero	1900 E 24th St, Des Moines, IA 50317
Childcare Provider	Erica Hill	3917 13th St, Des Moines, IA 50313
Childcare Provider	Erlinda Segovia	2518 E 16th St, Des Moines, IA 50316
Childcare Provider	Ernestina Garcia-Davis	4140 Windsor Pl Lot 56, Des Moines, IA 50320
Childcare Provider	Eula Burton	2505 NE 44th Ave, Des Moines, IA 50317
Childcare Provider	Eva De Avila	1219 Fremont St, Des Moines, IA 50316
Childcare Provider	Eye on the Prize Productions, LLC	40 E Mckinley Ave Apt 201, Des Moines, IA 50315
Childcare Provider	Faiza Omer	2814 Douglas Ave Apt 12, Des Moines, IA 50310
Childcare Provider	Farmah Sackie	3410 E 36th Ct, Des Moines, IA 50317



Childcare Provider	Felicia Dixon	1312 E 29th St, Des Moines, IA 50317
Childcare Provider	Felicia Garcia-Damian	2205 E 12th St, Des Moines, IA 50316
Childcare Provider	Felicia Sunh	2506 59th St, Des Moines, IA 50322
Childcare Provider	Ferdowsa Mohamud	3560 E Douglas Ave Apt D20, Des Moines, IA 50317
Childcare Provider	Flor Molina-Lima	2910 Arnold Rd Apt 21, Des Moines, IA 50310
Childcare Provider	Flora Grady	1249 10th St, Des Moines, IA 50314
Childcare Provider	Francine Hodges	1701 E Walnut St, Des Moines, IA 50316
Childcare Provider	Frank J Ross Boys & Girls Clubs-Moore	3716 50th St, Des Moines, IA 50310
Childcare Provider	Gaylena White-Young and Akaysha White	4011 SE 1st St, Des Moines, IA 50315
Childcare Provider	Genesis	1536 E 17th Ct, Des Moines, IA 50316
Childcare Provider	Genesis Cisneros	3217 SE 4th Ct, Des Moines, IA 50315
Childcare Provider	Geovana Lush and Jeffery Lush	3712 SW 33rd St, Des Moines, IA 50321
Childcare Provider	Geralynn Doescher	2247 Des Moines St, Des Moines, IA 50317
Childcare Provider	Gina Lewis and Emma Rivas	4030 Lay St, Des Moines, IA 50317
Childcare Provider	Gina Saldana	120 E Payton Ave, Des Moines, IA 50315
Childcare Provider	Giselle Rodriguez and Carlos Rodriguez Guerrero	815 SE 7th St, Des Moines, IA 50309



Childcare Provider	Gloria Rivas De Pena	2123 E Hughes Ave, Des Moines, IA 50320
Childcare Provider	Grace Children Center	2808 Boston Ave, Des Moines, IA 50310
Childcare Provider	Grace Kids Care Center	5201 Urbandale Avenue, Des Moines, IA 50310
Childcare Provider	Grace Preschool	3700 Cottage Grove Ave, Des Moines, IA 50311
Childcare Provider	Grand View Christian Early Education	2905 NE 46th Ave, Des Moines, IA 50317
Childcare Provider	Grand View Child Development Center	3004 E 38th St, Des Moines, IA 50317
Childcare Provider	Gregory & Suzie Glazer Burt Boys & Girls Club	2500 Forest Ave, Des Moines, IA 50311
Childcare Provider	Growing Roots Inc.	3811 1st St, Des Moines, IA 50313
Childcare Provider	Hajabo Kuso	6011 Creston Ave Apt 8, Des Moines, IA 50321
Childcare Provider	Hana Batista	1212 15th St, Des Moines, IA 50314
Childcare Provider	Hancaltuu C. Abdiisaa	1570 E Emma Ave, Des Moines, IA 50320
Childcare Provider	Hannah Zarway	7398 Meadowlands Dr, Des Moines, IA 50320
Childcare Provider	Hattie Robinson	3221 SE 22nd St Apt 104, Des Moines, IA 50320
Childcare Provider	Hawa Mohamed	1614 22nd St, Des Moines, IA 50310
Childcare Provider	Heather Corigliano	3420 South Union St, Des Moines, IA 50315
Childcare Provider	Nakisha Winters	4322 SE 4th St, Des Moines, IA 50315



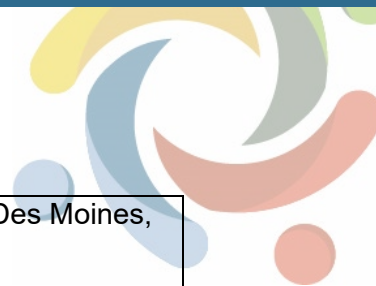
Childcare Provider	Nancy Harris	5515 SE 14th St Apt 104g, Des Moines, IA 50320
Childcare Provider	Nancy Sandoval	905 Shaw St, Des Moines, IA 50309
Childcare Provider	Nantore Zirayi	926 Oakridge Dr Apt 30425, Des Moines, IA 50314
Childcare Provider	Naomi Shimer	802 E County Line Rd Lot 308, Des Moines, IA 50320
Childcare Provider	Nashia Jones	4535 51st St, Des Moines, IA 50310
Childcare Provider	Natalie Hoepfner	8058 Crestview Dr, Des Moines, IA 50320
Childcare Provider	New Horizon Academy	450 SW 9th St, Des Moines, IA 50309
Childcare Provider	New Life Center Daycare	1031 23rd St, Des Moines, IA 50311
Childcare Provider	Nicole Foster	1331 E 17th St, Des Moines, IA 50316
Childcare Provider	Nicole Howard	3200 E 41st St, Des Moines, IA 50317
Childcare Provider	Nicole Murphy	3816 SW 3rd St, Des Moines, IA 50315
Childcare Provider	Nicole Sanders	306 E 17th St, Des Moines, IA 50316
Childcare Provider	Nicole Wignall	3206 3rd St, Des Moines, IA 50313
Childcare Provider	Nini Becho	926 Oakridge Dr Apt 30623, Des Moines, IA 50314
Childcare Provider	Niyukuri Jainess	3007 Timber Hill Ct, Des Moines, IA 50320
Childcare Provider	Noella Newton	5800 SW 2nd St, Des Moines, IA 50315



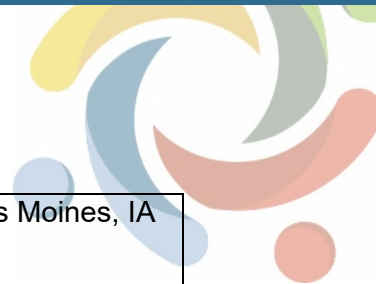
Childcare Provider	Norah Innis	3426 Thompson Ave, Des Moines, IA 50317
Childcare Provider	Norma Canizales	915 E Washington Ave, Des Moines, IA 50316
Childcare Provider	Norma Leanos	1354 York St, Des Moines, IA 50316
Childcare Provider	NyeaPu Flomo	5722 University Ave, Des Moines, IA 50311
Childcare Provider	Oak Academy	1401 Center St, Des Moines, IA 50314
Childcare Provider	Oretha Bedell	832 Aurora Ave, Des Moines, IA 50313
Childcare Provider	Over the Rainbow Daycare LLC	2825 Sweetwater Dr, Des Moines, IA 50320
Childcare Provider	Paige Brooks	1446 Wilson Ave, Des Moines, IA 50316
Childcare Provider	Park Side Home Daycare	3400 Park Side Dr, Des Moines, IA 50317
Childcare Provider	Pasca Hillary	926 Oakridge Dr Apt 30312, Des Moines, IA 50314
Childcare Provider	Patricia Sanchez	3019 Shadow Creek Ln, Des Moines, IA 50320
Childcare Provider	Patricia Saywahn	504 E Jackson Ave, Des Moines, IA 50311
Childcare Provider	Paula Reynolds	2745 E Grand Ave, Des Moines, IA 50317
Childcare Provider	Peggy Robinson	2044 Des Moines St, Des Moines, IA 50317
Childcare Provider	Penny Williamson	2208 E Rose Ave Apt 2, Des Moines, IA 50320
Childcare Provider	Playful Penguins LLC	4100 SE 1st St, Des Moines, IA 50315



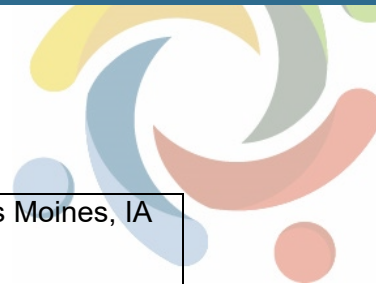
Childcare Provider	Plymouth Nursery School	4126 Ingersoll Ave, Des Moines, IA 50312
Childcare Provider	Principal Child Development Center	801 Park St, Des Moines, IA 50309
Childcare Provider	Racheal Kuir	926 Oakridge Dr Apt 20747, Des Moines, IA 50314
Childcare Provider	Rachel Ziaty	3214 E University Ave, Des Moines, IA 50317
Childcare Provider	Rahmo Ahmed	5515 SE 14th St Apt 9301, Des Moines, IA 50320
Childcare Provider	Randi Rehak	5120 Valdez Dr, Des Moines, IA 50310
Childcare Provider	Rebecca Huisman	4015 13th St, Des Moines, IA 50313
Childcare Provider	Adama Kargbo	205 Kirkwood Ave, Des Moines, IA 50315
Childcare Provider	Adduwa Awad	1010 School St Apt 1, Des Moines, IA 50309
Childcare Provider	Adela Gomez	2801 NE Norwood Ln, Des Moines, IA 50317
Childcare Provider	Adman Baba	910 28th St, Des Moines, IA 50312
Childcare Provider	Adventure Club	15 Indianola Rd, Des Moines, IA 50315
Childcare Provider	Afron Hassan	926 Oakridge Dr Apt 40306, Des Moines, IA 50314
Childcare Provider	Aida Villagomez	1249 E 12th St, Des Moines, IA 50316
Childcare Provider	Alba Marquez	1925 E Rose Ave, Des Moines, IA 50320
Childcare Provider	Alice Cooper	2241 Forest Ave, Des Moines, IA 50311



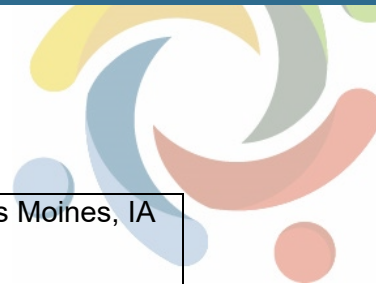
Childcare Provider	Alice Hudson	1400 Cutler Ave, Des Moines, IA 50315
Childcare Provider	Alicia Hedgecock	2201 Riverwoods Ave, Des Moines, IA 50320
Childcare Provider	Alisha Hampe	3012 SE 17th St, Des Moines, IA 50320
Childcare Provider	All Star Day Care	2 Hartford Ave, Des Moines, IA 50315
Childcare Provider	Alma Carmenate	2750 Sheridan Ave, Des Moines, IA 50310
Childcare Provider	Altoona Campus Kids Klub-Delaware Elem	4401 NE 46th St, Des Moines, IA 50317
Childcare Provider	Alvina Juasemai	2519 E 23rd St, Des Moines, IA 50317
Childcare Provider	Amanda Archer Cline	1607 E Court Ave, Des Moines, IA 50316
Childcare Provider	Amanda Bucklin	2609 Boyd St, Des Moines, IA 50317
Childcare Provider	Amanda Lindsay	2909 Don Lee Ct, Des Moines, IA 50317
Childcare Provider	Amanda Tracy	7507 SW 14th St, Des Moines, IA 50315
Childcare Provider	Ambaro Abdi	1401 Capitol Ave Apt 306, Des Moines, IA 50316
Childcare Provider	Amee Stoermer	5519 SE 5th St, Des Moines, IA 50315
Childcare Provider	America's Children of Oakmoor	4731 Merle Hay Rd, Des Moines, IA 50322
Childcare Provider	Amesa Jordan	4820 Twana Dr, Des Moines, IA 50310
Childcare Provider	Amina Ahmed	1810 12th St, Des Moines, IA 50314



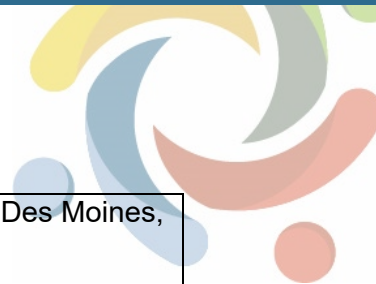
Childcare Provider	Ana Bonilla	3215 E 7th St, Des Moines, IA 50316
Childcare Provider	Ana Murueta	825 E 27th St, Des Moines, IA 50317
Childcare Provider	Angela Henderson	2820 E 40th St, Des Moines, IA 50317
Childcare Provider	Angela Gardner	4121 57th St, Des Moines, IA 50310
Childcare Provider	Angela Shorter	900 William St Apt 14, Des Moines, IA 50317
Childcare Provider	Angeles Pogyo	3319 SE 5th St, Des Moines, IA 50315
Childcare Provider	Anita Briddell	2429 Des Moines St, Des Moines, IA 50317
Childcare Provider	Annetta Jacobs	1501 Chautauqua Pkwy, Des Moines, IA 50314
Childcare Provider	Annie Soe	1525 19th St, Des Moines, IA 50314
Childcare Provider	Annie Blawou	3113 SW 2nd St, Des Moines, IA 50315
Childcare Provider	Annie Johnson	4560 Hubbell Ave Bldg F #206, Des Moines, IA 50317
Childcare Provider	Antoinette Duru	3635 Oakcrest Dr, Des Moines, IA 50310
Childcare Provider	Antoinette Hunter	616 Boston Ave, Des Moines, IA 50313
Childcare Provider	Antoinette Nakizungu	926 Oakridge Dr Apt 40408, Des Moines, IA 50314
Childcare Provider	Helen Sando	1616 7th St, Des Moines, IA 50314
Childcare Provider	Helena Deayen	3528 28th St, Des Moines, IA 50310



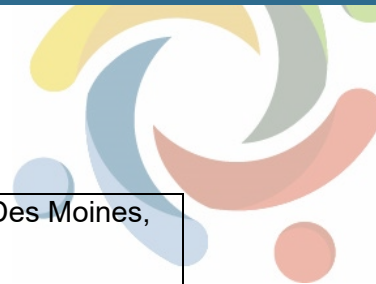
Childcare Provider	Helena Smith	1521 22nd St, Des Moines, IA 50311
Childcare Provider	Hindio Hassan	1249 13th St, Des Moines, IA 50314
Childcare Provider	Holy Family School A.C.E.S.	1265 E 9th St, Des Moines, IA 50316
Childcare Provider	Hope Christian Preschool-Downtown	1821 Ingersoll Ave, Des Moines, IA 50309
Childcare Provider	Hope Lutheran Preschool	3857 E 42nd St, Des Moines, IA 50317
Childcare Provider	House of Mercy Child Development Center	1409 Clark St, Des Moines, IA 50314
Childcare Provider	Idil Ahmed	6009 SW Creston Ave c-9, Des Moines, IA 50321
Childcare Provider	Iowa's Child Early Learning Community	135 Douglas Ave, Des Moines, IA 50313
Childcare Provider	Iquittia Brown	4560 Hubbell Ave Bldg F #212, Des Moines, IA 50317
Childcare Provider	Irene Jeffery	453 E Lally St, Des Moines, IA 50315
Childcare Provider	Isabel Rodriguez	3126 Indianola Ave, Des Moines, IA 50315
Childcare Provider	Isata Bayoh	2557 Wedgewood Rd Apt 38, Des Moines, IA 50317
Childcare Provider	Itxia Castro	1439 E Washington Ave, Des Moines, IA 50316
Childcare Provider	Jalayne Freeman	1822 Evergreen Ave, Des Moines, IA 50320
Childcare Provider	Jamie Harris	1511 10th St, Des Moines, IA 50314
Childcare Provider	Jamie Taylor	3012 Oxford St, Des Moines, IA 50313



Childcare Provider	Janette Diaz	3629 E 7th St, Des Moines, IA 50316
Childcare Provider	Janice Walls	1406 Washington Ave, Des Moines, IA 50314
Childcare Provider	Jannette Hamilton	3303 6th Ave, Des Moines, IA 50313
Childcare Provider	Janyssa Camp-Cunningham	651 25th St, Des Moines, IA 50312
Childcare Provider	Jasey Kendrick	106 E Leland Ave, Des Moines, IA 50315
Childcare Provider	Jeanne Weifenbach	3121 Hart Ave, Des Moines, IA 50320
Childcare Provider	Jennifer Gwyn and Ann Marie Lopez	2432 Whispering Ridge Dr, Des Moines, IA 50320
Childcare Provider	Jennifer Lemon	1500 E Bell Ave, Des Moines, IA 50320
Childcare Provider	Jennifer Madero	5211 SW 14th St, Des Moines, IA 50315
Childcare Provider	Jennifer Sevedge	4489 NE 26th St, Des Moines, IA 50317
Childcare Provider	Jennifer Shade-Butts	617 Maury St, Des Moines, IA 50309
Childcare Provider	Jerry Burns	1401 Linden Ln, Des Moines, IA 50315
Childcare Provider	Jessica Alvarez-White	2314 E 39th Ct, Des Moines, IA 50317
Childcare Provider	Jessica Ann Tuller	5419 SE 32nd St, Des Moines, IA 50320
Childcare Provider	Jessica Cloyed	1101 Emma Ave, Des Moines, IA 50315
Childcare Provider	Jessica Gathercole	900 Knob Hill Dr, Des Moines, IA 50317



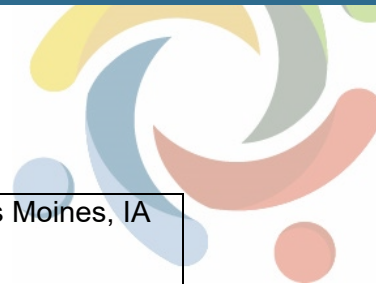
Childcare Provider	Jessica Jimenez	7203 SW 13th St, Des Moines, IA 50315
Childcare Provider	Jessica's Family Child Care, Inc	4040 York St, Des Moines, IA 50313
Childcare Provider	Jessie Roberts	2739 Boston Ave, Des Moines, IA 50310
Childcare Provider	Rebecca Karpeh	2121 E Caulder Ave Apt 2, Des Moines, IA 50320
Childcare Provider	Rebecca Sando	1422 10th St, Des Moines, IA 50314
Childcare Provider	Rhonda Busch	4200 42nd St, Des Moines, IA 50310
Childcare Provider	Rhonda Wagner	1735 E Maish Ave, Des Moines, IA 50320
Childcare Provider	Robin Buchman	5204 SE 9th St, Des Moines, IA 50315
Childcare Provider	Robin Holtry	2903 Don Lee Ct, Des Moines, IA 50317
Childcare Provider	Robyn Jones	4230 Kensington Dr, Des Moines, IA 50320
Childcare Provider	Rosa Pogyo	3323 SE 5th St, Des Moines, IA 50315
Childcare Provider	Ruby Hodges	3939 Columbia St, Des Moines, IA 50313
Childcare Provider	Saada Suba	926 Oakridge Dr Apt 20435, Des Moines, IA 50314
Childcare Provider	Sahro Abdi	926 Oakridge Dr Apt 40817, Des Moines, IA 50314
Childcare Provider	Salama Kabihogo	2102 Forest Ave, Des Moines, IA 50311
Childcare Provider	Sama Agar	926 Oakridge Dr Apt 30530, Des Moines, IA 50314



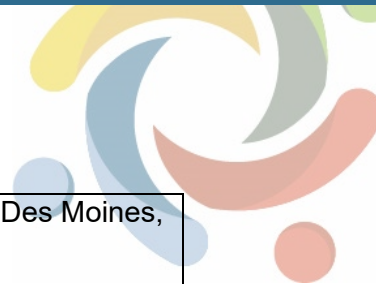
Childcare Provider	Samantha Howard	1938 E Bell Ave, Des Moines, IA 50320
Childcare Provider	Samantha Popenhagen	3911 SW 13th St, Des Moines, IA 50315
Childcare Provider	Samika Gates	3420 3rd St, Des Moines, IA 50313
Childcare Provider	Sandra Canizales	4035 Columbia St, Des Moines, IA 50313
Childcare Provider	Sandy Shipley	337 Greenfield Pkwy, Des Moines, IA 50320
Childcare Provider	Sanku Kodadi	1125 Riverview Dr, Des Moines, IA 50313
Childcare Provider	Sarah Davies	2897 Boston Ave, Des Moines, IA 50310
Childcare Provider	Sarah Stokes	1802 Oakland Ave Apt 5, Des Moines, IA 50314
Childcare Provider	Sarai Perez	806 Walker St, Des Moines, IA 50316
Childcare Provider	Satira Duncan-Burrell	5515 SE 14th St Apt 307i, Des Moines, IA 50320
Childcare Provider	Science Center Of Iowa Preschool	401 W Milk Jr Pkwy, Des Moines, IA 50309
Childcare Provider	Senbetu Binaim	926 Oakridge Dr Apt 40930, Des Moines, IA 50314
Childcare Provider	Shaacira Bashiir	926 Oakridge Dr Apt 20105, Des Moines, IA 50314
Childcare Provider	Shahrizaad Ahmed	1606 11th St, Des Moines, IA 50314
Childcare Provider	Shamirah Gibbs	2820 SE 20th St, Des Moines, IA 50320
Childcare Provider	Shanice Propps	307 SE 28th St, Des Moines, IA 50317



Childcare Provider	Shantoria Young and Billy Young	1704 Washington Ave, Des Moines, IA 50314
Childcare Provider	Sharae Clarkson	1705 Carpenter Ave, Des Moines, IA 50314
Childcare Provider	Shawna Lindell	2101 59th St, Des Moines, IA 50322
Childcare Provider	Sheena Wright	228 E Lally, Des Moines, IA 50315
Childcare Provider	Arisha Quinn	2730 Sheridan Ave, Des Moines, IA 50310
Childcare Provider	Arlesha Nelson	2210 Dean Ave, Des Moines, IA 50317
Childcare Provider	Arominta Weede	1201 E Watrous Ave, Des Moines, IA 50315
Childcare Provider	Ashley Collings	625 Pleasant View Dr, Des Moines, IA 50315
Childcare Provider	Ashley Grimes	4115 SW 25th St, Des Moines, IA 50321
Childcare Provider	Ashley Hill	2515 E 28th St, Des Moines, IA 50317
Childcare Provider	Ashley Miron-Cortez	2045 Courtland Dr, Des Moines, IA 50315
Childcare Provider	Asli Warsame	926 Oakridge Dr Apt 30712, Des Moines, IA 50314
Childcare Provider	Aster Anjelico	2905 Allison Ave, Des Moines, IA 50310
Childcare Provider	Aster Isaac	1416 22nd St, Des Moines, IA 50311
Childcare Provider	Autumn Vogel	3131 6th Ave, Des Moines, IA 50313
Childcare Provider	Azza Kinda	1536 17th St, Des Moines, IA 50314



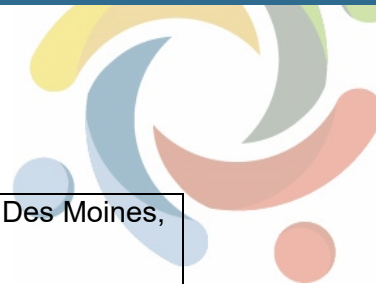
Childcare Provider	Bangirinama Joseline	1463 5th Ave, Des Moines, IA 50314
Childcare Provider	Barbara C Adams	1338 7th St, Des Moines, IA 50314
Childcare Provider	Batulo Shangalow	6000 Creston Ave Apt B9, Des Moines, IA 50321
Childcare Provider	Beatrice Bayubahe	5350 Saint Andrews Cir, Des Moines, IA 50320
Childcare Provider	Beatrice Gwion	1411 College Ave, Des Moines, IA 50314
Childcare Provider	Beatrice Ziaty	2728 College Ave, Des Moines, IA 50311
Childcare Provider	Bentura Carder	621 Virginia Ave, Des Moines, IA 50315
Childcare Provider	Bergman Academy	100 45th St, Des Moines, IA 50312
Childcare Provider	Bertha Linzy	6009 Creston Ave Apt A8, Des Moines, IA 50321
Childcare Provider	Betty Dahn	2101 E Grand Ave, Des Moines, IA 50317
Childcare Provider	Betty Dweh	926 Oakridge Dr Apt 30106, Des Moines, IA 50314
Childcare Provider	Betty Jefferson	2724 Holcomb Ave, Des Moines, IA 50310
Childcare Provider	Beuline Bucumi	1516 17th St Apt 1, Des Moines, IA 50314
Childcare Provider	Beverly R Robinson	1625 Garfield Ave, Des Moines, IA 50316
Childcare Provider	Bidwell Riverside Child Development Center	1203 Hartford Ave, Des Moines, IA 50315
Childcare Provider	Blanca Brenes	1360 21st St, Des Moines, IA 50311



Childcare Provider	Bob and Billie Ray Child Development Center	401 NE 66th Ave, Des Moines, IA 50313
Childcare Provider	Boulevard Children's Center	900 Polk Blvd, Des Moines, IA 50312
Childcare Provider	Branda Dixon	3810 SW 3rd St, Des Moines, IA 50315
Childcare Provider	Brandis Bright Beginnings LLC	2321 37th St, Des Moines, IA 50310
Childcare Provider	Bridget Landers	1224 E 38th St, Des Moines, IA 50317
Childcare Provider	Bright Horizons At The Downtown School	1800 Grand Ave, Des Moines, IA 50309
Childcare Provider	Brittany Kilts	4616 SE 7th St, Des Moines, IA 50315
Childcare Provider	Brittney Miller	1632 E Pleasant View Dr, Des Moines, IA 50320
Childcare Provider	Buley Aden	926 Oakridge Dr Apt 20639, Des Moines, IA 50314
Childcare Provider	Calvetta Williams	1230 12th St, Des Moines, IA 50314
Childcare Provider	Jimate Andu	1440 E Grand Ave Apt 305, Des Moines, IA 50316
Childcare Provider	Jimati Sama	3608 9th St, Des Moines, IA 50313
Childcare Provider	Joann Meeks	1308 Stewart St, Des Moines, IA 50316
Childcare Provider	John Temple	1424 Porter Ave, Des Moines, IA 50315
Childcare Provider	Johnathan Erdman	4024 E Douglas Ave, Des Moines, IA 50317
Childcare Provider	Johnesha Bekish	2117 E 40th Ct, Des Moines, IA 50317



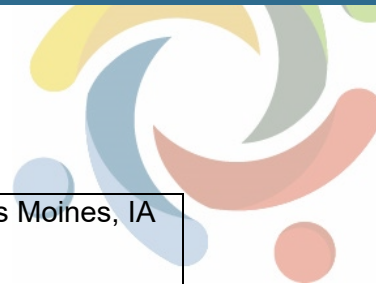
Childcare Provider	Jolie Danyiwo	1325 McCormick St, Des Moines, IA 50316
Childcare Provider	Jonnetta Camp	1644 Hull Ave Apt 106, Des Moines, IA 50313
Childcare Provider	Jose Hernandez	510 E Hughes Ave, Des Moines, IA 50315
Childcare Provider	Joyce Trent	5823 SE 5th St, Des Moines, IA 50315
Childcare Provider	Juanita Ann Shootman	3601 Williams St, Des Moines, IA 50317
Childcare Provider	Kaamilah Holder	1111 Droukas Ct, Des Moines, IA 50316
Childcare Provider	Kala Gajmer	2838 Richmond Ave, Des Moines, IA 50317
Childcare Provider	Kamrie Harris	526 Arthur Ave, Des Moines, IA 50313
Childcare Provider	Kandi Westphal-Shelton	1410 Royer St, Des Moines, IA 50316
Childcare Provider	Karan Quinn	2917 E Diehl Ave, Des Moines, IA 50320
Childcare Provider	Karen Holmes	4049 43rd St, Des Moines, IA 50310
Childcare Provider	Karen Mercial	3818 Columbia St, Des Moines, IA 50313
Childcare Provider	Karla Leos De Nunez	1228 15th St, Des Moines, IA 50314
Childcare Provider	Kathleen Langford	1165 22nd St, Des Moines, IA 50311
Childcare Provider	Kelly Hensley	2814 1st St, Des Moines, IA 50313
Childcare Provider	Kelsy Kohrs	3608 E 41st Ct, Des Moines, IA 50317



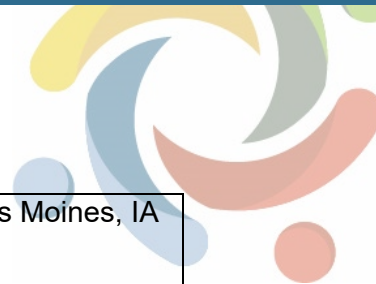
Childcare Provider	Kendra Cannon	4017 Clinton Ave, Des Moines, IA 50310
Childcare Provider	Kenielle Kinney	3017 Indianapolis Ave, Des Moines, IA 50317
Childcare Provider	Kesa Fletcher	2525 County Line Rd Lot 289, Des Moines, IA 50321
Childcare Provider	Khadiga Gibril	926 Oakridge Dr Bldg 102 25, Des Moines, IA 50314
Childcare Provider	Khadija Abaker	2126 University Ave, Des Moines, IA 50311
Childcare Provider	Shelley Amodeo	1223 Creston Ave, Des Moines, IA 50315
Childcare Provider	Shelly Byrd	601 Cummins Rd, Des Moines, IA 50315
Childcare Provider	Shirl Bradford	1442 9th St, Des Moines, IA 50314
Childcare Provider	Shirley Bargblor	2602 SE 19th St, Des Moines, IA 50320
Childcare Provider	Shirley Wilson	1314 Harrison Ave Apt 1, Des Moines, IA 50314
Childcare Provider	Sierra Folsom	4043 Dubuque Ave, Des Moines, IA 50317
Childcare Provider	Silvia Lopez Valdez	5806 SE 7th Ct, Des Moines, IA 50315
Childcare Provider	Small Wonders Childcare	3221 SE 19th Ct, Des Moines, IA 50320
Childcare Provider	Smile Daycare	6201 Franklin Ave, Des Moines, IA 50322
Childcare Provider	Sofia Martinez	2421 Boston Ave, Des Moines, IA 50310
Childcare Provider	St Augustin Before and After Care	4320 Grand Avenue, Des Moines, IA 50312



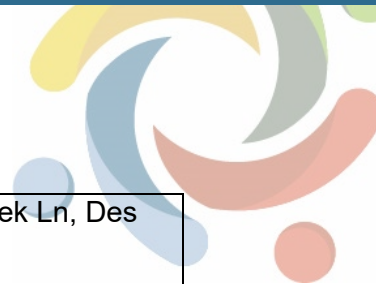
Childcare Provider	St Theresa Childcare	1230 Merle Hay Rd, Des Moines, IA 50311
Childcare Provider	Stacey Harris	4217 E Euclid Ave, Des Moines, IA 50317
Childcare Provider	Step By Step Learning Center	2102 King Avenue, Des Moines, IA 50320
Childcare Provider	Stephanie Greene-Jewett	3413 2nd Ave, Des Moines, IA 50313
Childcare Provider	Stephanie Hunter	711 28th St, Des Moines, IA 50312
Childcare Provider	Stephanie Lake	4147 11th St, Des Moines, IA 50313
Childcare Provider	Stephanie Talton	607 E Hughes Ave, Des Moines, IA 50315
Childcare Provider	Stephany Roberts	3324 Scott Ave, Des Moines, IA 50317
Childcare Provider	Susanna Perez	3922 7th St, Des Moines, IA 50313
Childcare Provider	Susy Leon	3607 SE 18th St, Des Moines, IA 50320
Childcare Provider	Sweetheart Home Day Care LLC	2022 Merle Hay Rd, Des Moines, IA 50310
Childcare Provider	Tajuana Robinson	4140 57th St, Des Moines, IA 50310
Childcare Provider	Tamara Miller	926 Oakridge Dr Apt 40303, Des Moines, IA 50314
Childcare Provider	Tameka Thompson	1611 8th St, Des Moines, IA 50314
Childcare Provider	Tamekia Crow	1336 Clark St, Des Moines, IA 50314
Childcare Provider	Candy Avila	908 Geil Ave, Des Moines, IA 50315



Childcare Provider	Capitol Park Early Learning Center	800 E 12th St, Des Moines, IA 50316
Childcare Provider	Carolyn Hill-Lomax	1429 13th St, Des Moines, IA 50314
Childcare Provider	Cecelia Page	2733 E Jefferson Ave, Des Moines, IA 50317
Childcare Provider	Cecelia Zulu	5909 New York Ave, Des Moines, IA 50322
Childcare Provider	Celina Quijan	737 SE 26th Ct, Des Moines, IA 50317
Childcare Provider	CFI Child Development Center	801 Forest Ave, Des Moines, IA 50314
Childcare Provider	CFI Teddy Bear Town	1800 Grand Ave, Des Moines, IA 50309
Childcare Provider	CFUM - Moulton	1541 8th St, Des Moines, IA 50314
Childcare Provider	Chantal Gatimatare	5128 Oaklyn Dr, Des Moines, IA 50310
Childcare Provider	Chauncy Rebik	3100 61st St, Des Moines, IA 50322
Childcare Provider	Chelsea Clay	1428 E 16th St, Des Moines, IA 50316
Childcare Provider	Cheryl James	1427 44th St, Des Moines, IA 50311
Childcare Provider	Cheryl Ann Patrick	3716 SE 21st Ct, Des Moines, IA 50320
Childcare Provider	Child Care Rositas INC	3848 E 14th St Lot 69, Des Moines, IA 50313
Childcare Provider	Children's Garden	3223 University Ave, Des Moines, IA 50311
Childcare Provider	Childserve Woodland Center	644 24th St, Des Moines, IA 50312



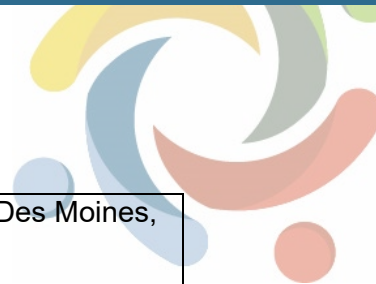
Childcare Provider	Childtime Learning Center at Park & Ride	610 Center St, Des Moines, IA 50309
Childcare Provider	Christ The King Daycare	5711 SW 9th Street, Des Moines, IA 50315
Childcare Provider	Christine McGriff dba Christy's Child Care	2747 E Diehl Ave, Des Moines, IA 50320
Childcare Provider	Cindy Dunkerson	3721 Kingman Blvd, Des Moines, IA 50311
Childcare Provider	Cindy Vandermark	1612 E 31st Ct, Des Moines, IA 50317
Childcare Provider	Cintia Leanos Marquez	2064 Maple St, Des Moines, IA 50317
Childcare Provider	Color My World Child Care & Preschool	2900 Easter Lake Dr, Des Moines, IA 50320
Childcare Provider	Conmigo Early Education Center	828 Scott Ave, Des Moines, IA 50309
Childcare Provider	Connie Baca-Canales	1342 Dewolf St, Des Moines, IA 50316
Childcare Provider	Connie Myers	1863 SE Creston Ave, Des Moines, IA 50320
Childcare Provider	Kids Connection-Holy Trinity School	2922 Beaver Ave, Des Moines, IA 50310
Childcare Provider	Kim Scott	1003 33rd St, Des Moines, IA 50311
Childcare Provider	Kimberly Alberigo	1120 17th St, Des Moines, IA 50314
Childcare Provider	Kimberly Hairston	3012 Bowdoin St, Des Moines, IA 50313
Childcare Provider	Kimberly Johnson	1616 Jefferson, Des Moines, IA 50314
Childcare Provider	Kimberly Trimble	23 E Rose Ave, Des Moines, IA 50315



Childcare Provider	Kimberly Woods	2937 Shadow Creek Ln, Des Moines, IA 50320
Childcare Provider	Konja Badme	1911 6th Ave, Des Moines, IA 50314
Childcare Provider	Kourtney Perry	3434 56th St, Des Moines, IA 50310
Childcare Provider	La Petite Academy - Des Moines	5708 SW 9th St, Des Moines, IA 50315
Childcare Provider	Lainda Drake	1112 E 8th St, Des Moines, IA 50316
Childcare Provider	Larraine Murray	2612 51st St, Des Moines, IA 50310
Childcare Provider	LaShae Shabazz	4007 SW 32nd St, Des Moines, IA 50321
Childcare Provider	Lashia Brown	1240 12th St, Des Moines, IA 50314
Childcare Provider	LaTasha Johnson	1604 Carpenter Ave, Des Moines, IA 50314
Childcare Provider	Laura Ammann	1059 45th St, Des Moines, IA 50311
Childcare Provider	LaWanda LeMaster	2105 47th St, Des Moines, IA 50310
Childcare Provider	Leann Folkers	2304 Saylor Rd, Des Moines, IA 50313
Childcare Provider	Leaps and Bounds Children's Academy Inc	1901 Bell Ave Ste 5, Des Moines, IA 50315
Childcare Provider	Learning Lots Daycare	3332 SW 31st St, Des Moines, IA 50321
Childcare Provider	Leesa Perry	1721 16th St, Des Moines, IA 50314
Childcare Provider	Lentenkiel Weldemikeal	1540 10th St, Des Moines, IA 50314



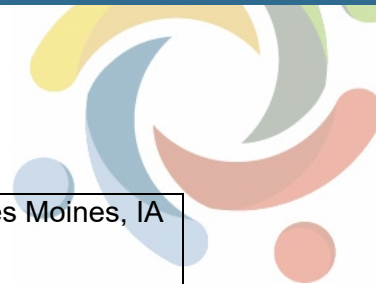
Childcare Provider	Lesly Canizales	4027 Columbia St, Des Moines, IA 50313
Childcare Provider	Lette Mohamed	926 Oakridge Dr Apt 40928, Des Moines, IA 50314
Childcare Provider	Ligoria Cruz-Pena	1325 5th Ave, Des Moines, IA 50314
Childcare Provider	Lil Scholars Preschool	756 9th Street, Des Moines, IA 50309
Childcare Provider	Linda Edvenson	2111 E 41st St, Des Moines, IA 50317
Childcare Provider	Tammie Washington	2004 E Hughes Ave, Des Moines, IA 50320
Childcare Provider	Tanisha Thompson	3916 8th St, Des Moines, IA 50313
Childcare Provider	Tanya Frazier	1627 13th St, Des Moines, IA 50314
Childcare Provider	Tanya Smith	318 SE Philip St, Des Moines, IA 50315
Childcare Provider	Tasha Hale	530 E Kenyon Ave Apt 109, Des Moines, IA 50315
Childcare Provider	Tee-Tee's Early Learning Clubhouse	2800 E Tiffin Ave, Des Moines, IA 50317
Childcare Provider	Telanda Watley	1430 5th Ave, Des Moines, IA 50314
Childcare Provider	Teresa Blaylock	1004 E Thornton Ave, Des Moines, IA 50315
Childcare Provider	Teri Henderson	5610 SE 4th St, Des Moines, IA 50315
Childcare Provider	The Early Learning Center	6151 Thornton Ave Ste 500, Des Moines, IA 50321
Childcare Provider	Theresa Daniels	3211 30th St Unit A Apt #7, Des Moines, IA 50310



Childcare Provider	Toni Oliver	3713 SE 23rd St, Des Moines, IA 50320
Childcare Provider	Tracey For Tots 2	2142 Indianola Ave, Des Moines, IA 50315
Childcare Provider	Tyondra Boagard	4142 12th St, Des Moines, IA 50313
Childcare Provider	Tyra Adam	6000 Creston Ave Unit B7, Des Moines, IA 50321
Childcare Provider	Uncle Sam's Federal Child Care Center	1408 E Court St, Des Moines, IA 50316
Childcare Provider	Unity Point Health Child Development Center	1019 Chestnut St, Des Moines, IA 50309
Childcare Provider	Valarie Berry	2316 Indianola Ave, Des Moines, IA 50315
Childcare Provider	Vanesa Valdez	4802 University Ave, Des Moines, IA 50311
Childcare Provider	Vanessa Wright	1001 Geil Ave, Des Moines, IA 50315
Childcare Provider	Vashara Newton-Weber	5515 SE 14th St Apt 208d, Des Moines, IA 50320
Childcare Provider	Veronica De Lara	2111 Des Moines St, Des Moines, IA 50317
Childcare Provider	Creative Center For Young Children	1001 Pleasant St, Des Moines, IA 50309
Childcare Provider	Crystal Smith and Gabrielle Baccam	2413 E 42nd St, Des Moines, IA 50317
Childcare Provider	Cynthia Blepo	1119 18th St, Des Moines, IA 50314
Childcare Provider	Dalia Bayoh	3560 E Douglas Ave Apt D14, Des Moines, IA 50317
Childcare Provider	Damaris Colon	823 E Railroad Ave, Des Moines, IA 50309



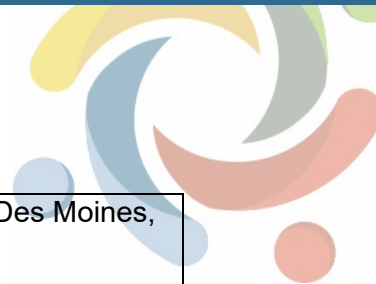
Childcare Provider	Danessa Minor	1315 College Ave, Des Moines, IA 50314
Childcare Provider	Danielle Gross	2315 Bennett Ave, Des Moines, IA 50310
Childcare Provider	Danielle Sheridan	5901 Tonka Ave, Des Moines, IA 50312
Childcare Provider	Danisha Allen	7420 Meadowlands Dr, Des Moines, IA 50320
Childcare Provider	Danya Jacque	1923 York St, Des Moines, IA 50316
Childcare Provider	Darlene Burkett	1369 Idaho St, Des Moines, IA 50316
Childcare Provider	Darnazia Mitchell	6520 Chaffee Rd Apt 159, Des Moines, IA 50315
Childcare Provider	Dawn Hogan	649 40th St, Des Moines, IA 50312
Childcare Provider	Deanna Campfield	2601 E Market St, Des Moines, IA 50317
Childcare Provider	Deborah Dweh	1112 E Shawnee Ave, Des Moines, IA 50313
Childcare Provider	Deborah Talbert	1719 Washington Ave, Des Moines, IA 50314
Childcare Provider	Debra Noble	2421 Williams St, Des Moines, IA 50317
Childcare Provider	December Scott	614 SE 28th St, Des Moines, IA 50317
Childcare Provider	Denise Blakeman	2121 E 41st St, Des Moines, IA 50317
Childcare Provider	Denise Hurtado-Rocha	1731 8th St, Des Moines, IA 50314
Childcare Provider	Des Moines CSD - M.E.E.P. @ Edmunds	1601 Crocker Street, Des Moines, IA 50314



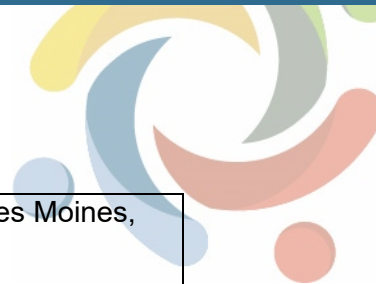
Childcare Provider	Des Moines Early Childhood Programs-Capitol View	320 E. 16th St, Des Moines, IA 50316
Childcare Provider	Des Moines Early Childhood Programs-McKee	2116 E. 39th Court, Des Moines, IA 50317
Childcare Provider	Des Moines Early Childhood Programs-McKinley	1610 SE 6th Street, Des Moines, IA 50315
Childcare Provider	Des Moines Early Childhood Programs-Mitchell	111 Porter, Des Moines, IA 50315
Childcare Provider	Des Moines Early Childhood Programs-Moulton	1541 8th Street, Des Moines, IA 50314
Childcare Provider	Des Moines Early Childhood Programs-Smouse	2820 Center Street, Des Moines, IA 50312
Childcare Provider	Des Moines Early Childhood Programs-Taylor	1801 16th St, Des Moines, IA 50314
Childcare Provider	Des Moines Early Childhood Programs-Walnut Street	901 Walnut St, Des Moines, IA 50309
Childcare Provider	Des Moines Early Childhood Programs-Woodlawn	4000 Lower Beaver Road, Des Moines, IA 50310
Childcare Provider	Dhaha Abdi	1435 5th Ave, Des Moines, IA 50314
Childcare Provider	Diana Diaz	729 E Diehl Ave, Des Moines, IA 50315
Childcare Provider	Diana Rogers	3103 John Pattersn Rd, Des Moines, IA 50317
Childcare Provider	Dina Enderton	7002 SW 14th St, Des Moines, IA 50315



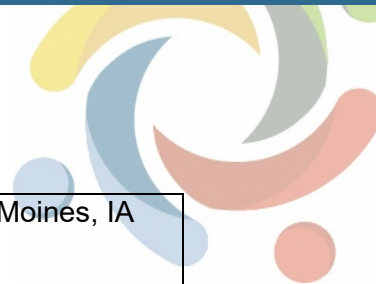
Childcare Provider	Donna Kinney	4560 Hubbell Ave Apt E 100, Des Moines, IA 50317
Childcare Provider	Dora Sandoval	1525 16th St, Des Moines, IA 50314
Childcare Provider	Doris Tejeda Rodriguez	1221 E 28th St, Des Moines, IA 50317
Childcare Provider	Dorothy Zeo	1313 McCormick St, Des Moines, IA 50316
Childcare Provider	Drake Head Start-Highland Park Christian Church	4260 NW 6th Dr, Des Moines, IA 50313
Childcare Provider	Drake University Head Start - Merle Hay	3800 Merle Hay Rd, Des Moines, IA 50310
Childcare Provider	Drake University Head Start- Southridge	1111 E Army Post Rd, Des Moines, IA 50315
Childcare Provider	Eagles Nest-Saydel Community School District	5817 NE 3rd St, Des Moines, IA 50313
Childcare Provider	Edith McJunkins	1803 10th St, Des Moines, IA 50314
Childcare Provider	Elaine Godwin	216 E Kirkwood Ave, Des Moines, IA 50315
Childcare Provider	Martha Nyaem	926 Oakridge Dr Apt10608, Des Moines, IA 50314
Childcare Provider	Mary Callahan	2915 SW 12th St, Des Moines, IA 50315
Childcare Provider	Mary Kay McBroom	314 SE Dunham Ave, Des Moines, IA 50315
Childcare Provider	Mary Mabiah	3007 E 42nd St, Des Moines, IA 50317
Childcare Provider	MattieLou Hayes	1054 16th St, Des Moines, IA 50314
Childcare Provider	McKee Extended Day Program	2116 E 39th St, Des Moines, IA 50317



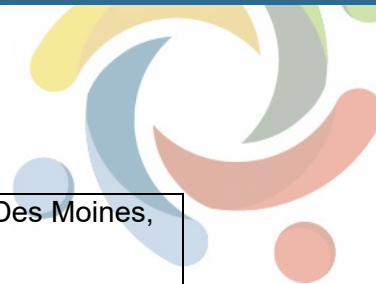
Childcare Provider	Mckinley Universal Ps	1610 SE 16th St, Des Moines, IA 50315
Childcare Provider	Megan Kennedy	4132 15th St, Des Moines, IA 50313
Childcare Provider	Megan Keyt	2432 Richmond Ave, Des Moines, IA 50317
Childcare Provider	Megan Strahl	5700 NE 6th St, Des Moines, IA 50313
Childcare Provider	Melinda Campo	1751 E County Line Rd, Des Moines, IA 50320
Childcare Provider	Melissa Ann Senecaut	2513 Indianola Ave, Des Moines, IA 50315
Childcare Provider	Melissa Bruce	1226 14th St, Des Moines, IA 50314
Childcare Provider	Melissa Hill	5470 NE 6th St, Des Moines, IA 50313
Childcare Provider	Melissa Mata Torres	1535 E Court Ave, Des Moines, IA 50316
Childcare Provider	Mercy Child Development Center	1150 6th Ave, Des Moines, IA 50314
Childcare Provider	Meredith Drive Preschool	5128 NW Meredith Dr, Des Moines, IA 50323
Childcare Provider	Merrill Smith	1236 14th St, Des Moines, IA 50314
Childcare Provider	Metro Kids - Brubaker	2900 E 42nd St, Des Moines, IA 50317
Childcare Provider	Metro Kids - Capitol View	320 E 16th St, Des Moines, IA 50316
Childcare Provider	Metro Kids - Cattell	3101 E 12th Street, Des Moines, IA 50316
Childcare Provider	Metro Kids - Cowles	6401 College Ave, Des Moines, IA 50324



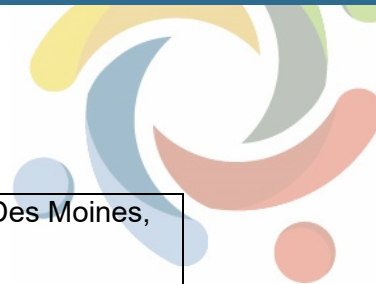
Childcare Provider	Metro Kids - Garton	2820 E 24th St, Des Moines, IA 50317
Childcare Provider	Metro Kids - Greenwood	316 37th St, Des Moines, IA 50312
Childcare Provider	Metro Kids - Hanawalt	225 56th St, Des Moines, IA 50312
Childcare Provider	Metro Kids - Hillis	2401 56th St, Des Moines, IA 50310
Childcare Provider	Metro Kids - Howe	2900 Indianola Ave, Des Moines, IA 50315
Childcare Provider	Metro Kids - Hubbell	800 42nd St, Des Moines, IA 50312
Childcare Provider	Metro Kids - Jackson	3825 Indianola Ave, Des Moines, IA 50320
Childcare Provider	Metro Kids - Jefferson	2425 Watrous Ave, Des Moines, IA 50321
Childcare Provider	Metro Kids - King	1849 Forest Ave, Des Moines, IA 50314
Childcare Provider	Metro Kids - Lovejoy	801 E Kenyon Ave, Des Moines, IA 50315
Childcare Provider	Metro Kids - McKinley	1610 SE 6th St, Des Moines, IA 50315
Childcare Provider	Metro Kids - Monroe	3015 Francis Ave, Des Moines, IA 50310
Childcare Provider	Metro Kids - Morris	1401 Geil Ave, Des Moines, IA 50315
Childcare Provider	Metro Kids - Oak Park	3928 6th Ave, Des Moines, IA 50313
Childcare Provider	Metro Kids - Park Avenue	3141 SW 9th St, Des Moines, IA 50315
Childcare Provider	Metro Kids - Perkins	4301 College Ave, Des Moines, IA 50311



Childcare Provider	Metro Kids - Phillips	1701 Lay St, Des Moines, IA 50317
Childcare Provider	Metro Kids - River Woods	2929 SE 22nd St, Des Moines, IA 50320
Childcare Provider	Metro Kids - Samuelson	3929 Bel Aire Rd, Des Moines, IA 50310
Childcare Provider	Metro Kids - South Union	4201 S Union St, Des Moines, IA 50315
Childcare Provider	Metro Kids - Stowe	1411 E 33rd Street, Des Moines, IA 50317
Childcare Provider	Metro Kids - Studebaker	300 SE County Line Rd, Des Moines, IA 50320
Childcare Provider	Metro Kids - Willard	2941 Dean Ave, Des Moines, IA 50317
Childcare Provider	Metro Kids - Windsor	5912 University Ave, Des Moines, IA 50311
Childcare Provider	Metro Kids - Wright	5001 SW 14th St, Des Moines, IA 50315
Childcare Provider	Michelle Anderson	1516 E 9th St, Des Moines, IA 50316
Childcare Provider	Michelle McGee	818 Bancroft St, Des Moines, IA 50315
Childcare Provider	Mihret Jemal	926 Oadkridge Dr Apt 20852, Des Moines, IA 50314
Childcare Provider	Milashu Awrin	226 Park Ave, Des Moines, IA 50315
Childcare Provider	Mitchell Extended Day Program	111 Porter Ave, Des Moines, IA 50315
Childcare Provider	Modusti Bushbaum	1180 NE 43rd Ave, Des Moines, IA 50313
Childcare Provider	Monica Adair	2458 E Porter Ave, Des Moines, IA 50320



Childcare Provider	Monica Akuien	808 Guthrie Ave, Des Moines, IA 50316
Childcare Provider	Mundo Pequeno LLC	1922 SW 1st St, Des Moines, IA 50315
Childcare Provider	Lisa Bear and Jenna Boylan	4475 NE 39th Ave, Des Moines, IA 50317
Childcare Provider	Lisa Manuel	3816 6th Ave, Des Moines, IA 50313
Childcare Provider	Little Angels Learning Center	606 E Army Post Rd Ste 5, Des Moines, IA 50315
Childcare Provider	Little Busy Body	4101 53rd St, Des Moines, IA 50310
Childcare Provider	Little Lambs Preschool at Mt Olive Lutheran Church	5625 Franklin Ave, Des Moines, IA 50310
Childcare Provider	Little Miracles Learning Center LLC	1829 Mondamin Ave, Des Moines, IA 50314
Childcare Provider	Little Sprouts Children's Center	4541 Fleur Dr, Des Moines, IA 50321
Childcare Provider	Lola Segovia	2308 SE 17th St, Des Moines, IA 50320
Childcare Provider	Lorena Marissa Cisneros	3201 SE 4th Ct, Des Moines, IA 50315
Childcare Provider	Loretta Braddy	1351 College Ave, Des Moines, IA 50314
Childcare Provider	Lori Kalvik	4701 Crestmoor Dr, Des Moines, IA 50310
Childcare Provider	Lori Kirk	3835 15th St, Des Moines, IA 50313
Childcare Provider	Lorna Morano	3612 Fleur Dr, Des Moines, IA 50321
Childcare Provider	Lynsi Baker	1716 E Walnut St, Des Moines, IA 50316



Childcare Provider	Maeitta Kollie	1536 E Bell Ave, Des Moines, IA 50320
Childcare Provider	Magaly Novoa	618 SE 27th Ct, Des Moines, IA 50317
Childcare Provider	Makya Rucker	339 Hart Ave, Des Moines, IA 50315
Childcare Provider	Mamie Gaye	1714 Franklin Ave, Des Moines, IA 50314
Childcare Provider	Maranda Harvey	1422 Milton Ave, Des Moines, IA 50316
Childcare Provider	Marcela Leanos	908 Leland Ave, Des Moines, IA 50315
Childcare Provider	Margaret Carter	3004 Deep Woods Ct, Des Moines, IA 50320
Childcare Provider	Margaret Kern	3125 SW 13th St, Des Moines, IA 50315
Childcare Provider	Maria Banda-Hernandez	6901 SW 13th St, Des Moines, IA 50315
Childcare Provider	Maria Carmen Castrejon	3427 E 39th St, Des Moines, IA 50317
Childcare Provider	Maria Carmenatte	1334 Hull Ave, Des Moines, IA 50316
Childcare Provider	Maria Ceniceros	5507 SW 3rd Pl, Des Moines, IA 50315
Childcare Provider	Maria Eguren De Lopez and Kim Reece	803 E Granger Ave, Des Moines, IA 50315
Childcare Provider	Maria Jacinto	1710 Carpenter Ave, Des Moines, IA 50314
Childcare Provider	Maria Martinez	1442 University Ave, Des Moines, IA 50314
Childcare Provider	Maria Nyemah	1440 E Grand Ave Apt 306, Des Moines, IA 50316



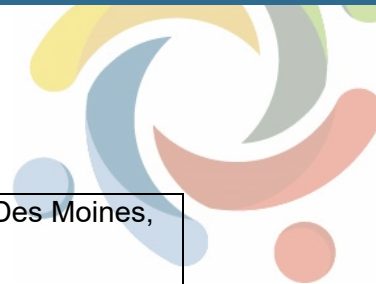
Childcare Provider	Maria Ortega	5409 South Union St, Des Moines, IA 50315
Childcare Provider	Maria Patino	1519 4th St, Des Moines, IA 50314
Childcare Provider	Maria Wallace	1221 E 16th St, Des Moines, IA 50316
Childcare Provider	Mariam Mohamed	311 E Mckinley Ave Apt 24, Des Moines, IA 50315
Childcare Provider	Marian Dhimble	926 Oakridge Dr Apt 30529, Des Moines, IA 50314
Childcare Provider	Marie Kashindi	2731 Holcomb Ave, Des Moines, IA 50310
Childcare Provider	Maritza Brown	1630 8th St, Des Moines, IA 50314
Childcare Provider	Maritza Jimenez	5230 SE 32nd St, Des Moines, IA 50320
Childcare Provider	Markita Hodges	2908 67th St, Des Moines, IA 50322
Childcare Provider	Marlene Brown Ackiss	1319 E 15th St, Des Moines, IA 50316
Childcare Provider	Martha Chol	926 Oakridge Dr Bldg 10301, Des Moines, IA 50314
Childcare Provider	Martha Cristales	1430 Stewart St, Des Moines, IA 50316
Childcare Provider	Martha Gweah	926 Oakridge Dr Apt10304, Des Moines, IA 50314
Childcare Provider	Victoria Philips	2843 Indianola Ave, Des Moines, IA 50315
Childcare Provider	Violet Ayres	1201 Bundy St, Des Moines, IA 50315
Childcare Provider	Violyn Boway	1218 Sampson St, Des Moines, IA 50316



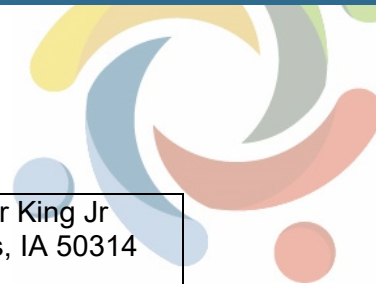
Childcare Provider	Virginia Zenteno	705 E Dunham Ave, Des Moines, IA 50315
Childcare Provider	Wakonda Preschool	3938 Fleur Dr, Des Moines, IA 50321
Childcare Provider	Wanda Calhoun	740 31st St, Des Moines, IA 50312
Childcare Provider	Wazira Withers	2340 E 39th St, Des Moines, IA 50317
Childcare Provider	Wee Care Center	821 Arthur Ave, Des Moines, IA 50316
Childcare Provider	Weptears Nyenpan	1636 Des Moines St, Des Moines, IA 50316
Childcare Provider	Westminster Preschool	4114 Allison Ave, Des Moines, IA 50310
Childcare Provider	Westside Early Education	4300 Beaver Ave, Des Moines, IA 50310
Childcare Provider	Willkie House	900 17th St, Des Moines, IA 50314
Childcare Provider	Wonder Years Academy	3838 Martin Luther King Jr Pkw, Des Moines, IA 50310
Childcare Provider	Woodlawn Extended Day Program	4000 Lower Beaver Rd, Des Moines, IA 50310
Childcare Provider	Yahaira Sanabria Martinez	4107 Lakeland Ct, Des Moines, IA 50320
Childcare Provider	Yazmin Leanos	3235 SE 20th St, Des Moines, IA 50320
Childcare Provider	Yesimar Lozada	2737 Chicago Ave, Des Moines, IA 50317
Childcare Provider	YMCA Childcare-Findley Elementary	3025 Oxford St, Des Moines, IA 50313
Childcare Provider	Yolanda Negrón	721 E Diehl Ave, Des Moines, IA 50315



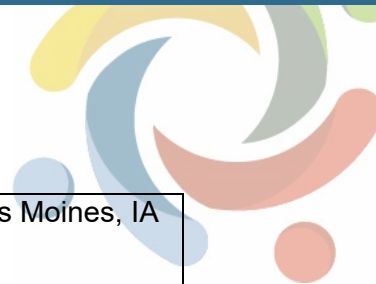
Childcare Provider	Zamzam Abdi	1100 24th St Apt 1, Des Moines, IA 50311
Childcare Provider	Zeinab Musa	2829 Capitol Ave, Des Moines, IA 50317
College	Des Moines University	Des Moines University, Des Moines, IA
College	Drake University	Drake University, Des Moines, IA
College	Grand View University	Grand View University, Des Moines, IA
College	Mercy College of Health Sciences	Mercy College of Health Sciences, Des Moines, IA
Library	Des Moines Public Library	1000 Grand Ave, Des Moines, IA 50309
Library	South Side Library	1111 SW Porter Ave, Des Moines, IA 50315
Library	East Side Library	259 Hubbell Ave, Des Moines, IA 50317
Library	Franklin Avenue Library	5000 Franklin Ave, Des Moines, IA 50310
Library	Forest Avenue Library	1326 Forest Ave, Des Moines, IA 50314
Library	North Side Library	3516 5th Ave, Des Moines, IA 50310
Park	Easter Lake Park	2830 Easter Lake Dr, Des Moines, IA 50320
Park	Fort Des Moines Park	7200 SE 5th St, Des Moines, IA 50315
Park	Four Mile Creek Greenbelt	3769 NE 54th Ave, Des Moines, IA 50317
Park	Great Western Trail	George Flagg Pkwy, Des Moines, IA



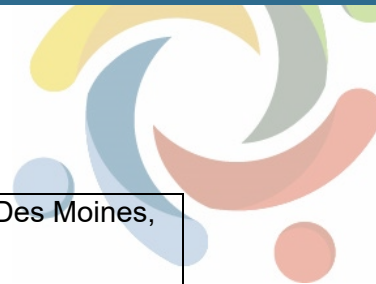
Park	Sycamore Trail	2309 Euclid Ave, Des Moines, IA 50310
Place of Worship	New Hope United Methodist Church	4525 Beaver Ave, Des Moines, IA 50310
Place of Worship	Wakonda Christian Church	3938 Fleur Dr, Des Moines, IA 50321
Place of Worship	Grace Temple Church of God	Des Moines, IA 50316
Place of Worship	Sovereign Grace Church	Des Moines, IA 50316
Place of Worship	Jehovah's Witnesses Union Park Congregation	1418 E Washington Ave, Des Moines, IA 50316
Place of Worship	Valley Junction Baptist Church	Des Moines, IA 50313
Place of Worship	Metro Assembly of God Church	Des Moines, IA 50313
Place of Worship	Kyles Ame Zion Church	907 15th St, Des Moines, IA 50314
Place of Worship	McKinley Avenue Church of Christ	620 E Mckinley Ave, Des Moines, IA 50315
Place of Worship	Bethel African Methodist Church	1528 E University Ave, Des Moines, IA 50316
Place of Worship	First United Methodist Church	1001 Pleasant St, Des Moines, IA 50309
Place of Worship	Good Shepherd Lutheran Church	3820 SW 9th St, Des Moines, IA 50315
Place of Worship	Peace Evangelical Lutheran Church	5615 SW 14th St, Des Moines, IA 50315
Place of Worship	Visitation Catholic Church	1271 E 9th St, Des Moines, IA 50316
Place of Worship	Lee Town Assembly Church	Des Moines, IA 50317
Place of Worship	Clifton Heights Presbyterian Church	2900 Easter Lake Dr, Des Moines, IA 50320



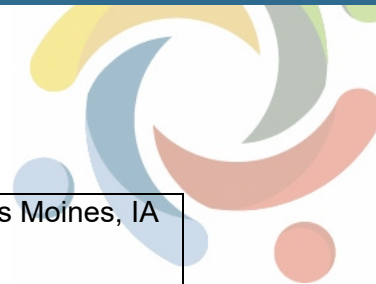
Place of Worship	Des Moines Vietnamese Buddhist Church	1419 Martin Luther King Jr Pkwy, Des Moines, IA 50314
Place of Worship	Central Lutheran Church	511 Des Moines St, Des Moines, IA 50309
Place of Worship	Simpson United Methodist Church	2600 Capitol Ave, Des Moines, IA 50317
Place of Worship	Galilee Baptist Church	2208 Des Moines St, Des Moines, IA 50317
Place of Worship	Jordan United Methodist Church	1950 SE 4th St, Des Moines, IA 50315
Place of Worship	Union Park Baptist Church	821 Arthur Ave, Des Moines, IA 50316
Place of Worship	Grace Wesleyan Church	4200 E 25th St, Des Moines, IA 50317
Place of Worship	New Jerusalem Church of God	Des Moines, IA 50313
Place of Worship	Abundant Life Community Church	Des Moines, IA 50315
Place of Worship	King of Kings Church	619 SE 15th St, Des Moines, IA 50317
Place of Worship	Emmanuel Baptist Church	7420 SW 9th St, Des Moines, IA 50315
Place of Worship	Calvary Grace Tabernacle Church	715 SE 14th Ct, Des Moines, IA 50317
Place of Worship	New Friendship Church of God	Des Moines, IA 50313
Place of Worship	Saint Anthony's Church	15 Indianola Rd, Des Moines, IA 50315
Place of Worship	Watlao Buddhavath	1804 E Park Ave, Des Moines, IA 50320
Place of Worship	Easton Place United Methodist Church	2412 Easton Blvd, Des Moines, IA 50317
Place of Worship	Pilgrim Baptist Church	Des Moines, IA 50316



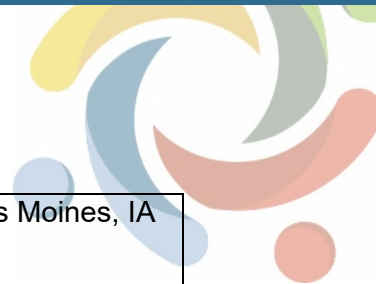
Place of Worship	Bethany Open Bible Church	2020 Bell Ave, Des Moines, IA 50315
Place of Worship	Asian Church of the Open Bible	1300 Buchanan St, Des Moines, IA 50316
Place of Worship	Marantha Open Bible Church	414 E 27th St, Des Moines, IA 50317
Place of Worship	Faith Independent Assembly of God Church	6001 SW 14th St, Des Moines, IA 50315
Place of Worship	Guadalupe Chapel	1271 E 9th St, Des Moines, IA 50316
Place of Worship	Church of Victory	Des Moines, IA 50315
Place of Worship	Grand View Lutheran Church	2930 E 13th St, Des Moines, IA 50316
Place of Worship	East Side Church of the Nazarene	1451 E 25th St, Des Moines, IA 50317
Place of Worship	Shiloh Baptist Church	3415 3rd St, Des Moines, IA 50313
Place of Worship	Heavenly Temple Church of God	Des Moines, IA 50311
Place of Worship	Saint Paul's Episcopal Cathedral	815 High St, Des Moines, IA 50309
Place of Worship	Maple Street Baptist Church	1552 Maple St, Des Moines, IA 50316
Place of Worship	University Church of God	Des Moines, IA 50316
Place of Worship	Christ Apostolic Temple	1230 E 17th St, Des Moines, IA 50316
Place of Worship	Fellowship Baptist Church	1503 SE 6th St, Des Moines, IA 50315
Place of Worship	Wesley United Methodist Church	800 E 12th St, Des Moines, IA 50316
Place of Worship	All Nation Church of God	Des Moines, IA 50317



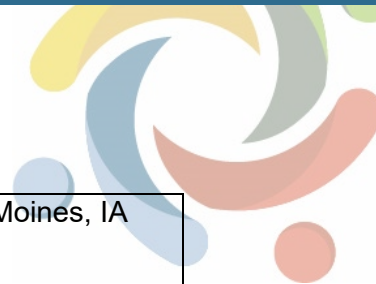
Place of Worship	Greater Love Church of God	1440 De Wolf St, Des Moines, IA 50316
Place of Worship	Rockpower Church	3119 SW 30th St, Des Moines, IA 50321
Place of Worship	Faith Harvest Tabernacle Church	Des Moines, IA 50315
Place of Worship	Glad Tidings Assembly of God Church	314 E Army Post Rd, Des Moines, IA 50315
Place of Worship	Vineyard Community Church	2332 Euclid Ave, Des Moines, IA 50310
Place of Worship	Evangelistic Missionary Church	1340 E 18th St, Des Moines, IA 50316
Place of Worship	First Christian Methodist Episcopal Church	Des Moines, IA 50317
Place of Worship	Luther Memorial Church	1201 Grandview Ave, Des Moines, IA 50316
Place of Worship	Southside Church of the Nazarene	4110 S Union St, Des Moines, IA 50315
Place of Worship	Union Park Christian Church	832 Grandview Ave, Des Moines, IA 50316
Place of Worship	Faith Church of the Nazarene	Des Moines, IA 50311
Place of Worship	Penn Avenue Church of God	Des Moines, IA 50316
Place of Worship	Park Avenue Christian Church	3219 SW 9th St, Des Moines, IA 50315
Place of Worship	First Grace Brethern Church	4200 E 25th St, Des Moines, IA 50317
Place of Worship	Bread of Life Church of God	2727 E Railroad Ave, Des Moines, IA 50317
Place of Worship	Mount Hebron Baptist Church	1338 9th St, Des Moines, IA 50314



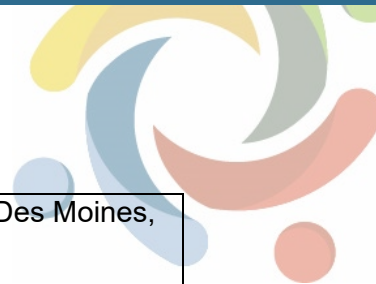
Place of Worship	Open Bible Standard Church	2020 Bell Ave, Des Moines, IA 50315
Place of Worship	Union Baptist Church	1200 McCormick St, Des Moines, IA 50316
Place of Worship	Korean United Methodist Church	1009 Guthrie Ave, Des Moines, IA 50316
Place of Worship	Mount Olive Baptist Church	3100 2nd Ave, Des Moines, IA 50313
Place of Worship	Trinity United Methodist Church	1548 8th St, Des Moines, IA 50314
Place of Worship	Park Avenue Presbyterian Church	3120 SW 9th St, Des Moines, IA 50315
Place of Worship	Calvary Apostolic Church	2611 Easton Blvd, Des Moines, IA 50317
Place of Worship	Trinity Baptist Church	Des Moines, IA 50321
Place of Worship	Evergreen Church of Christ	2215 Evergreen Ave, Des Moines, IA 50320
Place of Worship	Southtown Pentecostal Assembly	510 E Rose Ave, Des Moines, IA 50315
Place of Worship	Temple of Rest Assembly	Des Moines, IA 50320
Place of Worship	Our Savior's Full Gospel Church	Des Moines, IA 50314
Place of Worship	Mission Temple	1535 5th Ave, Des Moines, IA 50314
Place of Worship	Prince of Peace Lutheran Church	2600 E Euclid Ave, Des Moines, IA 50317
Place of Worship	Sweet Home Deliverance Church	3816 36th St, Des Moines, IA 50310
Place of Worship	Seventh Day Adventist Church	2317 Watrous Ave, Des Moines, IA 50321
Place of Worship	Evangelistic Christian Church	1413 E 17th St, Des Moines, IA 50316



Place of Worship	Saint Peter's Church	612 E 18th St, Des Moines, IA 50316
Place of Worship	Emmaus Community Church	Des Moines, IA 50314
Place of Worship	Grandview Church of Christ	2736 Hubbell Ave, Des Moines, IA 50317
Place of Worship	Fort Des Moines Church of Christ	244 E Army Post Rd, Des Moines, IA 50315
Place of Worship	Saint John's Lutheran Church	600 6th Ave, Des Moines, IA 50309
Place of Worship	New Life Center	1057 23rd St, Des Moines, IA 50311
Place of Worship	Basilica of Saint John	1915 University Ave, Des Moines, IA 50314
Place of Worship	Divine Temple Church	1000 Pennsylvania Ave, Des Moines, IA 50316
Place of Worship	Southside Assembly Church	Des Moines, IA 50315
Place of Worship	First Unitarian Church	1800 Bell Ave, Des Moines, IA 50315
Place of Worship	The Church of Jesus Christ of Latter Day Saints	2101 Evergreen Ave, Des Moines, IA 50320
Place of Worship	Gatchel United Methodist Church	Des Moines, IA 50314
Place of Worship	Lincoln Heights Lutheran Church	1217 Watrous Ave, Des Moines, IA 50315
Place of Worship	Bethany Baptist Church	3516 SE 14th St, Des Moines, IA 50320
Place of Worship	Burns United Methodist Church	1909 Martin Luther King Jr Pkwy, Des Moines, IA 50314
Place of Worship	New Hope Church of God in Christ	Des Moines, IA 50313



Place of Worship	Kingsway Cathedral	901 19th St, Des Moines, IA 50314
Place of Worship	Harvest Time Tabernacle Church	Des Moines, IA 50315
Place of Worship	Saint Ambrose Cathedral	607 High St, Des Moines, IA 50309
Place of Worship	Corinthian Baptist Church	814 School St, Des Moines, IA 50309
Place of Worship	Central Bible Church	2430 Guthrie Ave, Des Moines, IA 50317
Place of Worship	Philadelphia Seventh Day Adventist Church	1639 Garfield Ave, Des Moines, IA 50316
Place of Worship	Friendship Baptist Center	1526 Martin Luther King Jr Pkwy, Des Moines, IA 50311
Place of Worship	Vine Street Gospel Chapel	1441 E Vine St, Des Moines, IA 50316
Place of Worship	Crane Chapel	1278 E 18th St, Des Moines, IA 50316
Place of Worship	Church of God in Christ	Des Moines, IA 50313
Place of Worship	Sunshine Open Bible Tabernacle	2130 Easton Blvd, Des Moines, IA 50317
Place of Worship	Fountain of Life Cathedral	810 Emma Ave, Des Moines, IA 50317
Place of Worship	Southtown Baptist Church	6001 SE 5th St, Des Moines, IA 50315
Place of Worship	Christ the King Church	5711 SW 9th St, Des Moines, IA 50315
Place of Worship	Saint John's United Methodist Church	4700 SW 14th St, Des Moines, IA 50315
Place of Worship	Indianola Heights Christian Church	Des Moines, IA 50315
Place of Worship	Jesus Christ Apostolic Church	1230 E 17th St, Des Moines, IA 50316



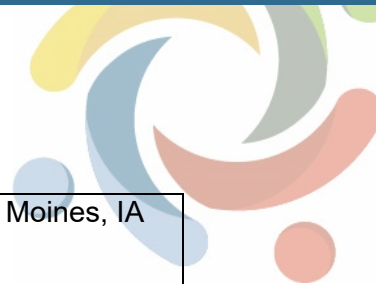
Place of Worship	Bible Missionary Church	4180 SE 16th St, Des Moines, IA 50320
Place of Worship	Chesterfield Christian Church	Des Moines, IA 50317
Place of Worship	Fort Des Moines Open Bible Church	1116 Army Post Rd, Des Moines, IA 50315
Place of Worship	Las Americas United Methodist Church	1548 8th St, Des Moines, IA 50314
Place of Worship	Restoration Misistries	Des Moines, IA 50314
Place of Worship	Fort Des Moines United Methodist Church	6205 SW 9th St, Des Moines, IA 50315
Place of Worship	Christ Lutheran Church	6411 SE 5th St, Des Moines, IA 50315
Place of Worship	First Lutheran Church	511 Des Moines St, Des Moines, IA 50309
Place of Worship	Lighthouse Full Gospel Baptist Church	555 E Euclid Ave, Des Moines, IA 50313
Place of Worship	Fort Des Moines Presbyterian Church	6001 S Union St, Des Moines, IA 50320
Place of Worship	Cottage Avenue Grove Presbyterian Church	24 & Cottage Grv, Des Moines, IA 50312
Place of Worship	Bloomfield Church	5930 Indianola Ave, Des Moines, IA 50320
School (K-12)	East High School	815 E 13th St, Des Moines, IA 50316
School (K-12)	Hoover High School	4800 Aurora Ave, Des Moines, IA 50310
School (K-12)	Lincoln High School	2600 SW 9th St, Des Moines, IA 50315
School (K-12)	North High School	501 Holcomb Ave, Des Moines, IA 50313
School (K-12)	Roosevelt High School	4419 Center St, Des Moines, IA 50312



School (K-12)	Virtual Campus	1000 Porter Avenue, Des Moines, IA 50315
School (K-12)	Brody Middle School	2501 Park Ave, Des Moines, IA 50321
School (K-12)	Callanan Middle School	3010 Center Street, Des Moines, IA 50312
School (K-12)	Goodrell Middle School	3300 E. 29th Street, Des Moines, IA 50317
School (K-12)	Harding Middle School	203 E Euclid Ave, Des Moines, IA 50313
School (K-12)	Hiatt Middle School	1430 E. University Ave, Des Moines, IA 50316
School (K-12)	Hoyt Middle School	2700 E 42nd St, Des Moines, IA 50317
School (K-12)	McCombs Middle School	201 SW County Line Rd, Des Moines, IA 50320
School (K-12)	Meredith Middle School	4827 Madison Ave, Des Moines, IA 50310
School (K-12)	Merrill Middle School	5301 Grand Ave, Des Moines, IA 50312
School (K-12)	Weeks Middle School	901 East Park Avenue, Des Moines, IA 50315
School (K-12)	Capitol View Elementary School	320 E. 16th, Des Moines, IA 50316
School (K-12)	Carver Elementary	705 E University Ave, Des Moines, IA 50316
School (K-12)	Cattell Elementary School	3101 E 12th St, Des Moines, IA 50316
School (K-12)	Cowles Elementary School	6401 College Ave, Des Moines, IA 50324
School (K-12)	Edmunds Fine Arts Academy	950 15th Street, Des Moines, IA 50314



School (K-12)	Findley Elementary School	3025 Oxford Street, Des Moines, IA 50313
School (K-12)	Garton Elementary	2820 E 24th St, Des Moines, IA 50317
School (K-12)	Greenwood Elementary School	316 37th Street, Des Moines, IA 50312
School (K-12)	Hanawalt Elementary	225 56th Street, Des Moines, IA 50312
School (K-12)	Hillis Elementary School	2401 56th St, Des Moines, IA 50310
School (K-12)	Howe Elementary	2900 Indianola, Des Moines, IA 50315
School (K-12)	Hubbell Elementary	800 42nd St, Des Moines, IA 50312
School (K-12)	Jackson Elementary School	3825 Indianola Ave, Des Moines, IA 50315
School (K-12)	Jefferson Elementary School	2425 Watrous Ave, Des Moines, IA 50321
School (K-12)	Jessie Franklin Taylor	1801 16th Street, Des Moines, IA 50314
School (K-12)	King Elementary School	1849 Forest Ave, Des Moines, IA 50314
School (K-12)	Lovejoy Elementary School	801 E Kenyon Ave, Des Moines, IA 50315
School (K-12)	Madison Elementary School	806 E Hoffman St, Des Moines, IA 50316
School (K-12)	McKee Elementary School	2115 E 39th St, Des Moines, IA 50317
School (K-12)	McKinley Elementary School	1610 SE 6th Street, Des Moines, IA 50315
School (K-12)	Mitchell Early Childhood Center	111 Porter, Des Moines, IA 50310



School (K-12)	Monroe Elementary School	2250 30th St, Des Moines, IA 50310
School (K-12)	Moore Elementary School	3725 52nd St, Des Moines, IA 50310
School (K-12)	Moulton Elementary School	1541 8th Street, Des Moines, IA 50314
School (K-12)	Brubaker Elementary School	2900 E 42nd Street, Des Moines, IA 50317
School (K-12)	Oak Park	3928 6th Avenue, Des Moines, IA 50313
School (K-12)	Park Ave Elementary School	3141 SW 9th St, Des Moines, IA 50315
School (K-12)	Perkins Elementary School	4301 College, Des Moines, IA 50311
School (K-12)	Phillips Elementary	1701 Lay St, Des Moines, IA 50317
School (K-12)	Pleasant Hill Elementary School	4801 E Oakwood Dr, Des Moines, IA 50327
School (K-12)	River Woods Elementary School	2929 SE 22nd St, Des Moines, IA 50320
School (K-12)	Samuelson Elementary School	3929 Bel-Aire Rd, Des Moines, IA 50310
School (K-12)	South Union Elementary School	4201 South Union, Des Moines, IA 50315
School (K-12)	Stowe Elementary School	1411 E 33rd St, Des Moines, IA 50317
School (K-12)	Stuebaker Elementary School	300 E County Line Rd, Des Moines, IA 50315
School (K-12)	Morris Elementary School	1401 Geil Avenue, Des Moines, IA 50315
School (K-12)	Willard Elementary School	2941 Dean Avenue, Des Moines, IA 50317



School (K-12)	Windsor Elementary	5912 University Avenue, Des Moines, IA 50311
School (K-12)	Woodlawn Early Childhood Center	4000 Lower Beaver Rd, Des Moines, IA 50310
School (K-12)	Wright Elementary School	5001 SW 14th St, Des Moines, IA 50315
School (K-12)	Downtown School	1800 Grand Avenue, Des Moines, IA 50309
School (K-12)	Orchard Place School	5412 SW 9th Street, Des Moines, IA 50315
School (K-12)	Walnut Street School	901 Walnut St, Des Moines, IA 50309
School (K-12)	Ruby Van Meter	710 28th St, Des Moines, IA 50312
School (K-12)	Saydel High School	5601 NE 7th St, Des Moines, IA 50313
School (K-12)	Woodside Middle School	5810 NE 14th St, Des Moines, IA 50313
School (K-12)	Cornell Elementary School	5817 NE 3rd St, Des Moines, IA 50313
School (K-12)	Delaware Elementary	4401 E 46th St, Des Moines, IA 50317
School (K-12)	Clive Learning Academy	1600 73rd Street, Des Moines, IA 50324
School (K-12)	St Anthony School	16 Columbus Ave, Des Moines, IA 50315
School (K-12)	St Augustin School	4320 Grand Ave, Des Moines, IA 50312
School (K-12)	Holy Family School	1265 E. 9th St., Des Moines, IA 50316
School (K-12)	St Joseph Elementary School	2107 E 33rd St, Des Moines, IA 50317



School (K-12)	St Theresa School	5810 Cara Carpenter Ave, Des Moines, IA 50311
School (K-12)	Christ The King School	701 Wall Ave, Des Moines, IA 50315
School (K-12)	Holy Trinity School	2922 Beaver Ave, Des Moines, IA 50310
School (K-12)	OneSchool Global - Des Moines	3720 E 29th St, Des Moines, IA 50317-4230
School (K-12)	Mt Olive Lutheran School	5625 Franklin, Des Moines, IA 50310-1099
School (K-12)	Grand View Christian High School	1701 East 33rd Street, Des Moines, IA 50317
School (K-12)	Bergman Academy	100 45th St, Des Moines, IA 50312
School (K-12)	Grand View Christian Middle School	1701 East 33rd Street, Des Moines, IA 50317
School (K-12)	Grand View Christian Elementary School	2905 NE 46th Ave, Des Moines, IA 50317
School (K-12)	Jordahl Academy	8435 University Ave, Des Moines, IA 50123
Workforce Development Center	Des Moines IowaWORKS Office	200 Army Post Road, Des Moines, IA, 50315
Workforce Development Center	Des Moines IowaWORKS Office	100 E Euclid - Suite #4 (Park Fair Mall), Des Moines, IA, 50313