



# Implementation Strategy

Fiscal Year 2023-2025 Plan

CHI Health Missouri Valley- Missouri Valley, IA




Board approved 7.21.22



## Table of Contents

<b>At-a-Glance Summary .....</b>	<b>3</b>
<b>Our Hospital and the Community Served .....</b>	<b>5</b>
About the Hospital .....	5
Our Mission .....	5
Financial Assistance for Medically Necessary Care.....	5
Description of the Community Served.....	5
<b>Community Assessment and Significant Needs .....</b>	<b>7</b>
Significant Health Needs .....	7
Significant Needs the Hospital Does Not Intend to Address .....	9
<b>2022 Implementation Strategy .....</b>	<b>11</b>
Creating the Implementation Strategy .....	11
Community Health Strategic Objectives .....	13
Strategies and Program Activities by Health Need .....	14

# At-a-Glance Summary

<p><b>Community Served</b></p> 	<p>CHI Health Missouri Valley is a Critical Access Hospital located in Missouri Valley, IA and largely serves the Harrison County area. Harrison County was identified as the community for this CHNA, as it is the primary service area for CHI Health Missouri Valley. Seventy five percent of CHI Health Missouri Valley patients reside in the following Harrison County zip codes: 51555, 51546 and 51579.</p>
<p><b>Significant Community Health Needs Being Addressed</b></p> 	<p>The significant community health needs the hospital is helping to address and that form the basis of this document were identified in the hospital’s most recent Community Health Needs Assessment (CHNA). Needs being addressed by strategies and programs are:</p> <ul style="list-style-type: none"> <li>● <b>Behavioral Health</b></li> <li>● <b>Health Related Social Needs</b> (e.g. childcare, food, housing, transportation, etc.)</li> </ul>
<p><b>Strategies and Programs to Address Needs</b></p> 	<p>The hospital intends to take actions and to dedicate resources to address these needs, including:</p> <p><b>Behavioral Health</b></p> <ul style="list-style-type: none"> <li>● Support school-based mental health programs and training, such as Youth Mental Health First Aid training and Question. Persuade. Respond. (QPR).</li> <li>● Implement and sustain an Integrated behavioral health/primary care model</li> <li>● Engage in the Southwest Iowa Mental Health and Disability Services Region Crisis Center Network and Behavioral Health Evaluation &amp; Transfer Service</li> <li>● Participate in and support community-based social groups for the aging population to receive kinship and dementia education.</li> <li>● Support and promote school- and community- based programming to prevent youth substance abuse</li> </ul> <p><b>Health Related Social Needs</b></p> <ul style="list-style-type: none"> <li>● Provide financial support to the Welcome Center Farmer's Market through annual sponsorship</li> <li>● Provide financial and in-kind support for county efforts to expand healthy food access to low-income residents, such as the Fresh Fruit and Vegetable Voucher Program or exploration of Double Up Food Bucks Program</li> <li>● Explore opportunities to expand home- based health care services and/or increase transportation opportunities for medical care and food</li> <li>● Participate in community coalitions exploring opportunities to increase safe, affordable workforce housing in Harrison County</li> </ul>
<p><b>Anticipated Impact</b></p>	<p><b>Behavioral Health</b></p> <ul style="list-style-type: none"> <li>● Decrease in youth feeling sad or hopeless</li> </ul>



- Increase the number of individuals receiving Behavioral Health services in Harrison County
- Reduce the need for Harrison County residents to travel outside the county to access behavioral health services
- Improve access to psychiatric assessment and mental health consultation in Harrison County
- Reduce the need to transfer behavioral health patients outside their community to access behavioral healthcare
- Increase in social connections among aging residents in Harrison County and increased community capacity to recognize early signs of dementia
- Reduction in youth substance use

#### **Health Related Social Needs**

- Increase in access to healthy foods in Harrison County
- Decrease in food security in Harrison County
- Expand access to housing at various income levels and for various needs of population strata (young people, families with children, aging, etc.)

#### **Planned Collaboration**



- Harrison County Schools (Missouri Valley, Woodbine, etc.)
- Southwest Iowa Mental Health and Disability Services Region
- Harrison County Home and Public Health Department
- Angels Care Home Health
- Alzheimer's Association
- Heartland Family Service
- Prevention Means Progress
- Welcome Center Farmer's Market
- Harrison County Board of Supervisors

A complete list of resources and partners can be found in the Resource Inventory at <https://www.chihealth.com/chna>.

This document is publicly available online at: [www.chihealth.com/chna](http://www.chihealth.com/chna). Written comments on this report can be submitted to CHI Health, by completing this [google form](https://forms.gle/V34LCQnhvYYdJU36): <https://forms.gle/V34LCQnhvYYdJU36>

# Our Hospital and the Community Served

## About the Hospital

CHI Health Missouri Valley is a part of CommonSpirit Health, one of the largest nonprofit health systems in the U.S., with more than 1,000 care sites in 21 states coast to coast, serving 20 million patients in big cities and small towns across America.

CHI Health Missouri Valley is a community-based hospital in Missouri Valley, Iowa, and primarily serves the rural area of Harrison County, located in the Loess Hills, near the Missouri River. The community-based hospital offers many forms of care: technologically advanced medical services, high-quality health education, screenings and more. Beyond the hospital walls, CHI Health Missouri Valley works closely with businesses, community groups, churches, schools, social service agencies, and others to build a healthier community. In 2021, CHI Health Missouri Valley received a five star rating from the Centers for Medicare & Medicaid Services (CMS) on its Overall Hospital Quality Ratings for 2021.

## Our Mission

The hospital’s dedication to assessing significant community health needs and helping to address them in conjunction with the community is in keeping with its mission. As CommonSpirit Health, we make the healing presence of God known in our world by improving the health of the people we serve, especially those who are vulnerable, while we advance social justice for all.

## Financial Assistance for Medically Necessary Care

It is the policy of CommonSpirit Health to provide, without discrimination, emergency medical care and medically necessary care in CommonSpirit hospital facilities to all patients, without regard to a patient’s financial ability to pay. This hospital has a financial assistance policy that describes the assistance provided to patients for whom it would be a financial hardship to fully pay the expected out-of-pocket expenses for such care, and who meet the eligibility criteria for such assistance. The financial assistance policy, a plain language summary and related materials are available in multiple languages on the hospital’s website.



## Description of the Community Served

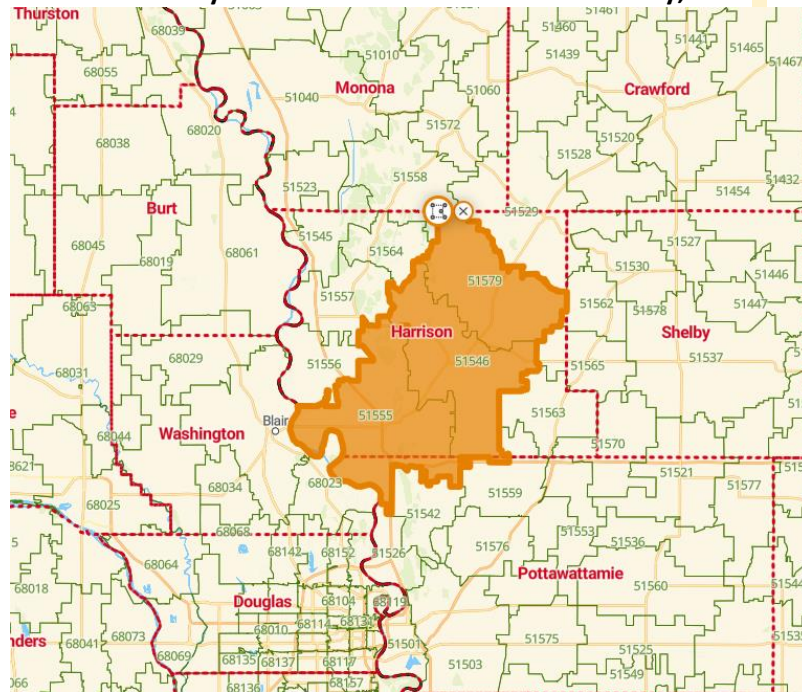
### Community Definition

CHI Health Missouri Valley identified Harrison County including the zip codes that demonstrated 75-90% of served in calendar year 2019 (51555, 51546, 51579) as the primary



service area. CHI Health Missouri Valley is a critical access hospital located in Missouri Valley, IA and largely serves the Harrison County area... See Figure 1 below.

**Figure 1: CHI Health Missouri Valley CHNA Service Area - Harrison County, Iowa<sup>1</sup>**



### **Community Description**

CHI Health Missouri Valley is located in Missouri Valley, Iowa. Missouri Valley is in the southwest corner of Harrison County, a non-metropolitan county located in west central Iowa. Harrison County is composed of nine school districts and ten incorporated towns: Dunlap, Little Sioux, Logan, Magnolia, Missouri Valley, Modale, Mondamin, Persia, Pisgah and Woodbine. Logan is the county seat and there are also six unincorporated towns, and 20 townships.<sup>1</sup> According to the most recent census estimates, Harrison County is 81% rural, encompasses 697 square miles and has 14,582 residents. The population density of Harrison County is estimated at 21.4 persons per square mile, making it less than half as densely populated as the state of Iowa (54.5 persons per square mile). The population of Harrison County is primarily non-Hispanic White, and a slightly higher percentage of residents over 65 years of age reside in Harrison County (19.9%), compared to the State of Iowa (17.5%). See Table 1 for community demographics.<sup>2</sup>

The median income in Harrison County (\$63,854) is slightly higher than the state average (\$60,523). Harrison County has a similar percentage of high school graduates rates, compared with the State of Iowa (Harrison County: 94.1, Iowa: 91.4), but educational attainment is lower in Harrison County with regard to completion of a Bachelor's degree (Harrison County: 19.46%, Iowa: 28.57%). Harrison County has 13 designated Health Professional Shortage Areas (HPSA) including primary care, dental health, mental health disciplines. The HPSA scores range from 7 to 17 (12.77 median score) where the score

<sup>1</sup> Harrison County, Iowa. 2021. Accessed March 2022. <http://www.harrisoncountyia.org/>

<sup>2</sup> US Census Bureau QuickFacts accessed March 2022 <http://www.census.gov/quickfacts>

range is 0 to 26 (the higher the score indicates a greater priority). Harrison county has two designated Medically Underserved Areas with scores of 61.8 and 60.9, where the lowest score (highest need) is 0; the highest score (lowest need) is 100.<sup>34</sup>

## Community Assessment and Significant Needs

The health issues that form the basis of the hospital’s community health implementation strategy and programs were identified in the most recent CHNA report, which was adopted in April 2022. The CHNA contains several key elements, including:

- Description of the assessed community served by the hospital;
- Description of assessment processes and methods;
- Presentation of data, information and findings, including significant community health needs;
- Community resources potentially available to help address identified needs; and
- Discussion of impacts of actions taken by the hospital since the preceding CHNA.

Additional detail about the needs assessment process and findings can be found in the CHNA report, which is publicly available on the hospital’s website or upon request from the hospital, using the contact information in the At-a-Glance Summary.

## Significant Health Needs

The CHNA identified the significant needs in the table below, which also indicates which needs the hospital intends to address. Identified needs may include specific health conditions, behaviors and health care services, and also health-related social needs that have an impact on health and well-being.

Significant Health Need	Description	Intend to Address?
Aging Problems	<ul style="list-style-type: none"> <li>• Harrison County has an older population than the state of Iowa; 19.4% of Harrison County residents are 65 years or older, compared to 16.7% statewide.</li> <li>• Over a quarter of community survey respondents (26.61%) identified “aging problems” as one of the three most important health concerns in Harrison County.</li> <li>• One in six community survey respondents (16%) identified “Alzheimer’s/Dementia” as one of the three most important health concerns in Harrison County.</li> </ul>	

<sup>3</sup> HPSA Find. Accessed on March 2022. <https://data.hrsa.gov/tools/shortage-area/hpsa-find>

<sup>4</sup> MUA Find. Accessed on March 2022. <https://data.hrsa.gov/tools/shortage-area/mua-find>

Significant Health Need	Description	Intend to Address?
Cancer	<ul style="list-style-type: none"> <li>● 16.37% of community survey respondents identified “cancer” as one of the three most important health concerns in Harrison County.</li> <li>● Harrison County has a higher cancer incidence rate (529.1 per 100,000) than Iowa as whole (484.1).</li> <li>● The top five most commonly diagnosed cancers in Harrison County are Breast (170.1), Prostate (144.5), Lung &amp; Bronchus (63.9), Colon &amp; Rectum (47.2), and Non-Hodgkin Lymphoma (26.7).</li> <li>● Harrison County has a higher age-adjusted mortality rate (156.8) when compared to the state of Iowa (154.3).</li> </ul>	
Cardiovascular Disease (CVD)	<ul style="list-style-type: none"> <li>● CVD is the second leading cause of death in Harrison County.</li> <li>● Harrison County has a lower age-adjusted death rate for coronary heart disease (81.2) when compared to Iowa (102.3), and the United States (91.5).</li> </ul>	
Child Abuse & Neglect	<ul style="list-style-type: none"> <li>● 10.37% of community survey respondents identified “child abuse/neglect” as one of the three most important health concerns in Harrison County.</li> <li>● In Harrison County, there was 23.5 Child abuse and neglect (per 1,000 children, age 0-17).</li> </ul>	
Health Related Social Needs	<ul style="list-style-type: none"> <li>● Food environment index is 8.6 (Index of factors that contribute to a healthy food environment, from 0 (worst) to 10 (best)), comparable to the state (8.5).</li> <li>● 8% of Harrison County households report severe housing problems.</li> <li>● One in six Harrison County households are housing cost burdened (16.3%), meaning their housing costs exceed 30% of their household income.</li> <li>● 15% of community survey respondents identified “housing that is safe and affordable” as one of the three most important health concerns in Harrison County.</li> </ul>	✓
Mental Health	<ul style="list-style-type: none"> <li>● Harrison County reported 3.8 poor mental health days, which is slightly higher when compared to the state (3.5).</li> </ul>	✓



Significant Health Need	Description	Intend to Address?
	<ul style="list-style-type: none"> <li>● 2,340:1 population to mental health provider ratio in Harrison County, significantly higher than the state overall at 1,450:1.</li> <li>● One quarter (25.5%) of community survey respondents identified “mental health problems” as one of the three most important health concerns in Harrison County.</li> <li>● 12.16% of community survey respondents identified “stress” as one of the three most important health concerns in Harrison County.</li> <li>● 11.35% of community survey respondents identified “bullying” as one of the three most important health concerns in Harrison County.</li> </ul>	
Obesity & Lifestyle Factors for Chronic Disease	<ul style="list-style-type: none"> <li>● 37% of adults in Harrison County are obese, which is slightly higher when compared to the state (34%).</li> <li>● Approximately one in five (21.2%) of community survey respondents identified “obesity (overweight)” as one of the three most important health concerns in Harrison County.</li> </ul>	
Substance Abuse	<ul style="list-style-type: none"> <li>● One in five Harrison County adults smoke which is slightly higher than the state (17%).</li> <li>● Nearly one quarter (24%) of Harrison County adults report excessive drinking.</li> <li>● Around half (44.08%) of community survey respondents identified “alcohol/drug use” as one of the three most important health concerns in Harrison County.</li> <li>● Of community survey respondents, 13.94% identified “tobacco use/smoking/e-cigarettes/vaping” as one of the three most important health concerns in Harrison County.</li> </ul>	
Unintentional Injuries	<ul style="list-style-type: none"> <li>● Rate of injury deaths per 100,000 population is 75 in Harrison County; higher than state (68).</li> </ul>	

**Significant Needs the Hospital Does Not Intend to Address**

In acknowledging the range of priority health issues that emerged from the CHNA process, CHI Health Missouri Valley prioritized Behavioral Health and Health Related Social Needs, in order to most effectively focus resources and meaningfully impact the selected health issues. As described in the process below, the hospital took into consideration existing partnerships, available resources, the

hospital's level of expertise, existing initiatives (or lack thereof), potential for impact, and the community's interest in the hospital engaging in that area in order to select the priorities.

**Aging.** Aging was not selected as a standalone priority, however the Community Benefit Action Team (CBAT) has employed a lifecourse approach to the priority health needs of behavioral health and health related social needs, so consideration of the aging population will be addressed within the accordant activities and strategies. In particular, the following activities will address the needs of an aging population: 1) participate in and support community-based social groups for the aging population to receive kinship and dementia education and 2) explore opportunities to expand home-based health care services and/or increase transportation opportunities for medical care and food. CHI Health Missouri Valley recognizes the growing aging population in Harrison County presents challenges for health services infrastructure, however Harrison County has several resources that exist to offer relevant support to elderly populations and better address the challenges that aging presents.

**Cancer.** Cancer was not selected for work in an effort to maximize existing resources and staff time to address needs or root causes which have the potential to impact other identified health needs. However, CHI Health will continue to host a cancer support group and smoking cessation services. Through the Health Related Social Needs priority, Activity 2.3.3 (Explore opportunities to expand home-based health care services and/or increase transportation opportunities for medical care and food) may indirectly address cancer by increasing access to preventive care and screenings.

**Cardiovascular Disease.** This health need was not selected for work in an effort to maximize existing resources and staff time to address needs or root causes which have the potential to impact other identified health needs. Health Related Social needs was an identified health need which was prioritized in an effort to indirectly address cardiovascular disease by increasing access to healthy foods and improving food security.

**Child Abuse & Neglect.** While this health need was not prioritized, acknowledgment was made by the CBAT that this need is being addressed by the Child Abuse Prevention Council, of which Harrison County Home and Public Health Department (HCHPH) is the convener. HCHPH will continue to lead these efforts and seek additional funding.

**Obesity & Lifestyle Factors for Chronic Disease** - This health need was not selected for work in an effort to maximize existing resources and staff time to address needs or root causes which have the potential to impact other identified health needs. Health Related Social needs was an identified health need which was prioritized in an effort to indirectly address obesity & lifestyle factors for chronic disease through the sponsorship of the Welcome Center's Farmers Market and funding of fresh fruit and vegetable voucher program.

**Substance Abuse** - This health need is being addressed through the behavioral health need priority, with dedicated mental health and substance abuse prevention/ treatment strategies.

## 2022 Implementation Strategy

This section presents strategies and program activities the hospital intends to deliver, fund or collaborate with others on to address significant community health needs over the next three years, including resources for and anticipated impacts of these activities.

Planned activities are consistent with current significant needs and the hospital's mission and capabilities. The hospital may amend the plan as circumstances warrant, such as changes in community needs or resources to address them.

### Creating the Implementation Strategy

The hospital is dedicated to improving community health and delivering community benefit with the engagement of its management team, board, clinicians and staff, and in collaboration with community partners.

#### ***Purpose and Goals***

CHI Health and our local hospitals make significant investments each year in our local community to ensure we meet our Mission of creating healthier communities. The ISP is a critical piece of this work to ensure we are appropriately and effectively working and partnering in our communities.



The goals of this ISP are to:

1. Identify strategies that will meaningfully impact the areas of high need identified in the CHNA that affect the health and quality of life of residents in the communities served by CHI Health.
2. Ensure that appropriate partnerships exist or are developed and that resources are leveraged to improve the health of the most vulnerable members of our community and to reduce existing health disparities.
3. Identify core measures to monitor the work and assure positive impact for residents of our communities.
4. Ensure compliance with section 501(r) of the Internal Revenue Code for not-for-profit hospitals under the requirements of the Affordable Care Act.

#### ***Community Benefit Action Team (CBAT)***

In order to select priority areas and design meaningful, measurable strategies, the CHI Health Missouri Valley Community Benefit Action Team (CBAT), an interdisciplinary team of hospital leaders and staff, considered data and top health needs from the 2022 CHNA. For each top health need, the hospital took into consideration existing partnerships, available resources, the hospital's level of expertise, existing

initiatives (or lack thereof), potential for impact, and the community's interest in the hospital engaging in that health area.

Throughout development of the plan, internal and community partners were consulted to ensure the appropriate strategies were selected, the right partners were engaged, and resources were leveraged. To further assure alignment and integration with the organization, Nursing, Care Management, Foundation, Healthy Communities team members have ongoing participation in hospital planning efforts which includes information from the CHNAs and implementation plans.

## **Prioritization Process**

### *Healthy Harrison Coalition*

Harrison County Home and Public Health Department convened individuals from CHI Health Missouri Valley, as well as those who represent or serve public health, aging, disability, mental health, education, violence-impacted and low income populations, through an established collective impact organization, Healthy Harrison Coalition (HHC). Participants' sponsoring organizations are listed above in "Community Health Needs Assessment Process and Methods." Through a series of monthly meetings from December 2021 - February 2022, coalition members reviewed primary and secondary data on a variety of community health indicators. All parties who reviewed the data found the data to accurately represent the needs of the community.

On February 8th 2021, Healthy Harrison Coalition members were asked to vote on the top health needs for Harrison County using the following criteria:

- severity of the health issue population impacted (making special consideration to disparities and vulnerable populations )
- trends in the data
- existing partnerships
- available resources
- hospital's level of expertise
- existing initiatives (or lack thereof)
- potential for impact
- community's interest in the hospital engaging in that health area

### *CHI Missouri Valley CBAT*

During the CHNA process, CHI Health Missouri Valley CBAT Team identified the top health needs through consideration of various criteria, including: standing in comparison with benchmark data; identified trends; the magnitude of the issue in terms of the number of persons affected; and the perceptions of top health issues among key informants giving input to the process. This process can be reviewed in more detail in the CHNA posted at [www.chihealth.com/chna](http://www.chihealth.com/chna),

Upon completion of the CHNA, CHI Health Missouri Valley's CBAT held a meeting and gained input from community partners to further prioritize the top health needs as well as sought additional community validation from the hospital's community board and local health department. During these internal and external meetings the team took into consideration the severity of each health issue, factors driving the health needs, the populations impacted (making special consideration to disparities and vulnerable

populations), the trends in the data, as well as existing partnerships, available resources, the hospital's level of expertise, existing initiatives (or lack thereof), potential for impact, and the community's interest in the hospital engaging in that health area. Through this process Behavioral Health and Health Related Social Needs was identified as drivers of these health needs therefore, it has been added to the list of Prioritized Health Needs in Table 3, which the hospital considered as part of this planning process. The CHI Health Missouri Valley Community Board reviewed and approved the implementation strategy in July 2022.

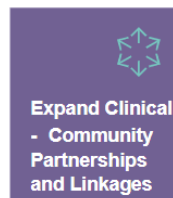
## Community Health Strategic Objectives

The hospital believes that program activities to help address significant community health needs should reflect a strategic use of resources and engagement of participants both inside and outside of the health care delivery system.

CommonSpirit Health has established four core strategic objectives for community health improvement activities. These objectives help to ensure that our program activities overall address strategic aims while meeting locally-identified needs.



Create robust alignment with multiple departments and programmatic integration with relevant strategic initiatives to optimize system resources for advancing community health.



Scale initiatives that complement conventional care to be proactive and community-centered, and strengthen the connection between clinical care and social health.




Work with community members and agency partners to strengthen the capacity and resiliency of local ecosystems of health, public health, and social services.



Partner, invest in and catalyze the expansion of evidence-based programs and innovative solutions that improve community health and well-being.



## Strategies and Program Activities by Health Need

 <b>Health Need #1: Behavioral Health</b>	
<b>Goals &amp; Anticipated Impact</b>	<p>Goals:</p> <ul style="list-style-type: none"> <li>● Expand access to and provision of youth mental health services</li> <li>● Provide access to behavioral health services in Harrison County and encourage greater collaboration between primary care and behavioral health providers</li> <li>● Expand capacity to effectively treat individuals in mental health crisis in the appropriate care setting</li> <li>● Prevent social isolation and increase community capacity to support healthy aging</li> <li>● Prevent youth substance use</li> </ul> <p>Anticipated Impact:</p> <ul style="list-style-type: none"> <li>● Decrease in youth feeling sad or hopeless</li> <li>● Increase the number of individuals receiving behavioral health services in Harrison County</li> <li>● Reduce the need for Harrison County residents to travel outside the county to access behavioral health services</li> <li>● Improve access to psychiatric assessment and mental health consultation in Harrison County</li> <li>● Reduce the need to transfer behavioral health patients outside their community to access behavioral healthcare</li> <li>● Increase in social connections among aging residents in Harrison County and increased community capacity to recognize early signs of dementia</li> <li>● Reduce youth substance use</li> </ul>
<b>Community Indicators</b>	<b>CHNA 2016</b>



**Health Need #1: Behavioral Health**

- 21% of Harrison County respondents reported heavy drinking (Community Health Status Indicators (2011))
- The average number of mentally unhealthy days reported in past 30 days for Harrison County was 2.9 in 2014 (County Health Rankings)
- 26% of 8th graders report feeling “worthless,” “some of the time” or “most of the time” in the past 30 days. (Iowa Youth Survey 2014)

**CHNA 2019**

- 19% of Harrison County respondents reported excessive drinking (binge or heavy) (2016) (County Health Rankings)
- The average number of mentally unhealthy days reported in past 30 days for Harrison County was 3.3 in 2016 (County Health Rankings)
- 19% of 8th graders report feeling “worthless,” “most of the time” or “all of the time” in the past 30 days. (Iowa Youth Survey, 2016)

**CHNA 2022**


- 24% of Harrison County respondents reported excessive drinking (County Health Rankings, 2021)
- The average number of poor mental health days reported in past 30 days for Harrison County was 3.8 (County Health Rankings, 2021)
- 37% of 8th graders report feeling “worthless,” “some of the time” or “most of the time” in the past 30 days. (Iowa Youth Survey, 2018)


Strategy	Key Activities	Strategic Objectives			
		Alignment & Integration	Clinical - Community Linkages	Capacity for Equitable Communities	Innovation & Impact
1.1 Expand access to community-based mental health services for	1.1.1 Support school-based mental health programs and training, such as Youth Mental Health First Aid training and	✓		✓	



**Health Need #1: Behavioral Health**

youth	Question. Persuade. Respond. (QPR)				
1.2 Expand access to clinic-based behavioral health services for youth and adults	1.2.1 Implement and sustain an Integrated behavioral health/primary care model	✓			
1.3 Partner with the Region to support and implement the Crisis Center Network	1.3.1 Engage in the Southwest Iowa Mental Health and Disability Services Region Crisis Center Network and Behavioral Health Evaluation & Transfer Service	✓	✓	✓	✓
1.4 Support social connection and dementia prevention education	1.4.1 Participate in and support community-based social groups for the aging population to receive kinship and dementia education.			✓	
1.5 Access to Substance Abuse Prevention	1.5.1 Support and promote school- and community- based programming to prevent youth substance abuse		✓	✓	
<b>Related Activities</b>	<p>The following activities represent complementary efforts in which CHI Health system or CHI Health Missouri Valley is addressing the identified health need through financial support, in-kind staff contribution or a combination thereof.</p> <ul style="list-style-type: none"> <li>• CHI Health Missouri Valley provides telehealth services to expand access to mental health services for consultation and medication management.</li> <li>• Leadership from CHI Health Missouri Valley participates in the Missouri Valley Coalition for Change, which focuses on the prevention of substance abuse and awareness about mental health among teens.</li> </ul>				

 <b>Health Need #1: Behavioral Health</b>	
<b>Planned Resources</b>	The hospital will provide registered nurses, community health educators, philanthropic cash grants, outreach communications, and program management support for these initiatives.
<b>Planned Collaborators</b>	<ul style="list-style-type: none"> <li>● Harrison County Schools (Missouri Valley, Woodbine, etc.)</li> <li>● Harrison County Schools (Missouri Valley, Woodbine, etc.)</li> <li>● Southwest Iowa Mental Health and Disability Services Region</li> <li>● Harrison County Home and Public Health Department</li> <li>● Angels Care Home Health</li> <li>● Alzheimer's Association</li> <li>● Heartland Family Service</li> <li>● Prevention Means Progress</li> </ul>

 <b>Health Need #2: Health Related Social Needs</b>	
<b>Goals &amp; Anticipated Impact</b>	<p>Goal:</p> <ul style="list-style-type: none"> <li>● Provide access to healthy, locally- sourced produce for Harrison County residents</li> <li>● Reduce transportation barriers for low- income and aging residents to access health care and healthy foods</li> <li>● Improve access and availability of affordable housing in Harrison County</li> </ul> <p>Anticipated Impact:</p> <ul style="list-style-type: none"> <li>● Increase in access to healthy foods in Harrison County</li> <li>● Decrease in food security in Harrison County</li> <li>● Expand access to housing at various income levels and for various needs of population strata (young people, families with children, aging, etc.)</li> </ul>
<b>Community Indicators</b>	<b>CHNA 2016</b>



**Health Need #2: Health Related Social Needs**

	<ul style="list-style-type: none"> <li>• 33% of adults in Harrison County are obese</li> <li>• 35% of youth ages 8-13 who attended one of four CHI Health Clinics in 2015 were considered overweight or obese for their age</li> <li>• Only 24% of 6th graders and 36% of 11th graders report being active for 60 min or more for 7 days of past week</li> <li>• Less than 8% report consuming 5 fruits/vegetables daily (2014 Iowa Youth Survey – Harrison County Results)</li> </ul> <p><b>CHNA 2019</b></p> <ul style="list-style-type: none"> <li>• 34% of adults in Harrison County are obese (County Health Rankings, 2018)</li> <li>• 24% of 6th graders and 34% of 11th graders report being active for 60 mins or more for 7 days of past week (2016 Iowa Youth Survey- Harrison County results)</li> <li>• 5% and 6% of students in grades 5, 8 and 11 report consuming 5 vegetables/ fruits daily (respectively) (2016 Iowa Youth Survey- Harrison County results)</li> </ul> <p><b>CHNA 2022</b></p> <ul style="list-style-type: none"> <li>• 37% of adults in Harrison County are obese (County Health Rankings, 2021)</li> <li>• 45% of 6th graders and 26% of 11th graders report being active for 60 mins or more for 7 days of past week (2018 Iowa Youth Survey- Harrison County results)</li> <li>• 7% and 3% of students in grades 6, 8 and 11 report consuming 5 vegetables/ fruits daily (respectively) (2018 Iowa Youth Survey- Harrison County results)</li> </ul>				
<p><b>Strategy</b></p>	<p><b>Key Activities</b></p>	<p><b>Strategic Objectives</b></p>			
		<p>Alignment &amp; Integration</p>	<p>Clinical - Community Linkages</p>	<p>Capacity for Equitable Communities</p>	<p>Innovation &amp; Impact</p>
<p>2.1 Support and promote the Welcome Center Farmer</p>	<p>2.1.1 Provide financial support to the Welcome Center Farmer's Market through annual sponsorship</p>			<p>✓</p>	





**Health Need #2: Health Related Social Needs**

Market					
2.2 Expand access to healthy foods for Harrison County residents who are food insecure	2.2.1 Provide financial and in-kind support for county efforts to expand healthy food access to low-income residents, such as the Fresh Fruit and Vegetable Voucher Program or exploration of Double Up Food Bucks Program			✓	
2.3 Expand accessible transportation and/ or home based care and food delivery	2.3.1 Explore opportunities to expand home- based health care services and/or increase transportation opportunities for medical care and food	✓	✓		✓
2.4 Engage in community efforts to increase affordable housing	2.4.1 Participate in community coalitions exploring opportunities to increase safe, affordable workforce housing in Harrison County			✓	
<b>Related Activities</b>	<p>The following activities represent complementary efforts in which CHI Health system or CHI Health Missouri Valley is addressing the identified health need through financial support, in-kind staff contribution or a combination thereof.</p> <ul style="list-style-type: none"> <li>• CHI Health Missouri Valley sponsors community events and provides staff volunteers throughout the year (e.g. Pokémon Bicycle Run hosted in June at Woodbine Community School and an annual wellness screening for Boyer Valley School teachers)</li> <li>• CHI Health Missouri Valley provides bicycle helmets and sponsors bicycle safety education for all 3rd graders in Harrison County</li> <li>• CHI Health provides financial support for the Healthy Harrison Coalition, including meeting space, meals and executive leadership</li> <li>• Certified diabetes educators provide counseling and education on nutrition and physical activity through CHI Health Clinics</li> </ul>				



## Health Need #2: Health Related Social Needs

<b>Planned Resources</b>	The hospital will provide registered nurses, community health educators, philanthropic cash grants, outreach communications, and program management support for these initiatives.
<b>Planned Collaborators</b>	<ul style="list-style-type: none"><li>● Welcome Center Farmer's Market</li><li>● Harrison County Home and Public Health Dept.</li><li>● Southwest Iowa Mental Health and Disability Services Region</li><li>● Harrison County Board of Supervisors</li></ul>