

Behavioral Health Innovation

HHS Director Kelly Garcia

Medicaid Director Elizabeth Matney

Director of Behavioral Health Marissa Eyanson



Agenda

Challenging Behavioral Health Landscape

Medicaid

Mental Health and Disability Services
(MHDS) Region Status

Behavioral Health System Alignment

Specialized Healthcare Capacity Roundtable



Background



Met for three-half day sessions October through December with a select group of system leaders in both the child and adult systems of care.



Comprehensive data across all services within the continuum of care, and gaps in the system were mapped.



The group then began brainstorming solutions to the gaps found.

Next Step – Urgent Member “SWAT” Meetings



Leadership was represented
across the healthcare system
(programs, organizations, etc.)



The group addressed urgent
member cases with the goal to
leave the meeting with more
solutions than challenges.

FY24 Rate Increases & Psychiatric Intensive Care



FY24 Rate Increases

HCBS
Program
(2023)
\$5,500,000



Nursing
Facility
Rebase
\$15 million



Mental Health
Service Rate
Increase
\$3 million



Substance
Abuse
Provider
Rates
\$3,000,000



Mental Health
Therapy
\$7,000,000



Psychiatric Intensive Care Rate

In 2022, the Iowa legislature passed a bill directing the development of a psychiatric inpatient care (PIC) reimbursement rate for Medicaid.

This bill required Iowa HHS to start a tiered-rate reimbursement model for psychiatric intensive inpatient care under the Medicaid program. This was based on member acuity.

This rate went into effect January 1, 2023.
HF 2578 appropriates \$1.5 million for the implementation of Iowa Medicaid PIC rates for the period of January 1, 2023, to June 30, 2023.

Goals

1

Reduction in the amount of time individuals await placement in emergency department settings.

2

Reduction in the number of individuals turned away from hospital psychiatric inpatient placement due to a hospital's inability to staff/treat individuals with specialized needs.

3

Leverage more “open” psychiatric beds to provide psychiatric intensive care.

MHDS Region Status



MHDS Contracts

- ▶ Initial contract 1/1/22 – 6/30/23, with amendment extending the contracts through 6/30/24.
- ▶ Must provide access to all core services required in law.
- ▶ Expands data analytics and Evidence Based Practices work already in progress.
- ▶ New initiatives include a justice-involved services workgroup; an environmental scan related to prevention, early intervention, and early education; and an environmental scan related to service coordination.

MHDS Region Annual Reports

Region	FY23 Beginning Fund Balance	FY23 Regional Service System Payment	FY23 Local and Regional Revenues	FY23 Other Revenues	FY23 Total Funds Available	FY23 Expenditures	FY23 Ending Fund Balance	Acceptable Encumbrance	Ending Fund Balance as a Percent of Expenditures
Care Connections of Northern Iowa	2,952,587	2,451,837	514,737	-	5,919,161	4,199,994	1,064,135	655,032	25.34%
Central Iowa Community Services	16,949,786	12,916,069	668,298	-	30,534,152	25,352,833	4,907,243	274,076	19.36%
County Rural Offices of Social Services (CROSS)	1,431,102	1,485,382	2,560,260	(617,740)	4,859,004	3,666,847	1,049,932	142,225	28.63%
County Social Services (CSS)	8,547,408	8,991,175	659,794	108,366	18,306,743	10,323,120	7,983,623	-	77.34%
Eastern Iowa MHDS Region	7,599,000	10,159,751	317,648	-	18,076,399	13,750,730	4,325,669	-	31.46%
Heart of Iowa Region	447,119	4,407,050	952,196	-	5,806,365	4,492,800	1,313,565	-	29.24%
MHDS of the East Central Region	16,053,563	16,653,063	985,200	-	33,691,827	29,136,268	4,055,559	500,000	13.92%
Polk County Health Services	691,307	18,711,238	1,479,958	-	20,882,503	22,599,080	(1,716,577)	-	-7.60%
Rolling Hills Community Services Region	6,836,650	5,322,746	460,531	-	12,619,927	7,792,647	4,827,280	-	61.95%
Sioux River MHDS	3,081,172	3,352,546	150,815	-	6,584,534	3,234,944	3,349,590	-	103.54%
South Central Behavioral Health Region	1,827,658	2,937,361	24,754	-	4,789,773	4,658,660	(38,110)	169,224	-0.82%
Southeast Iowa Link (SEIL)	5,502,412	3,025,712	1,852,726	(2,612,582)	7,768,268	5,385,849	2,038,843	343,576	37.86%
Southern Hills Regional Mental Health	435,142	1,105,710	-	-	1,540,852	907,164	633,688	-	69.85%
Southwest Iowa MHDS Region	4,389,536	6,390,469	124,704	45,050	10,949,758	9,864,195	1,085,564	-	11.01%
Total	76,744,442	97,910,109	10,751,621	(3,076,906)	182,329,266	145,365,129	34,880,003		

Notes:

* FY23 revenues and expenditures, and fund balances are from Region's FY23 Annual Report

** Negative *Other Revenues* for CROSS and SEIL include repayment of excess FY22 fund balances to Regional Incentive Fund

MHDS SFY2024 Budgets

Region	FY24 Budgeted Beginning Fund Balance	FY24 State Funds	FY24 Other Budgeted Revenues	FY24 Budgeted Total Funds Available	FY24 Budgeted Expenditures	FY24 Budgeted Ending Fund Balance	Ending Fund Balance as a Percent of Expenditures
Care Connections of Northern Iowa	638,213	2,563,000	0	3,201,213	3,038,500	162,713	5%
Central Iowa Community Services	11,374,433	17,845,520	125,000	29,344,953	21,354,815	7,990,138	37%
County Rural Offices of Social Services (CROSS)	850,121	3,131,640	0	3,981,761	3,883,028	98,733	3%
County Social Services (CSS)	3,576,676	11,652,840	351,525	15,581,041	13,376,325	2,204,716	16%
Eastern Iowa MHDS Region	5,181,958	12,043,960	0	17,225,918	17,049,724	176,194	1%
Heart of Iowa Region	607,898	4,799,920	0	5,407,818	5,316,003	91,815	2%
MHDS of the East Central Region	5,500,000	24,348,680	750,000	30,598,680	29,200,000	1,398,680	5%
Polk County MHDS Region	0	19,873,760	0	19,873,760	19,683,000	190,760	1%
Rolling Hills Community Services Region	2,275,723	8,723,880	300,000	11,299,603	8,650,277	2,649,326	31%
Sioux River MHDS	2,902,979	4,589,640	81,000	7,573,619	4,884,151	2,689,468	55%
Mental Health Agency of Southeast Iowa	1,719,189	9,775,280	151,000	11,645,469	11,091,042	554,427	5%
Southern Hills Regional Mental Health	292,850	1,162,720	0	1,455,570	1,157,560	298,010	26%
Southwest Iowa MHDS Region	1,827,910	7,516,720	53,000	9,397,630	9,397,630	0	0%
Total	36,747,950	128,027,560	1,811,525	166,587,035	148,082,055	18,504,980	

Notes:

* FY24 revenues and expenditures, and fund balances are from Region's FY24 Annual Service and Budget Plans

** South Central Behavioral Health Region & Southeast Iowa Link (SEIL) merged in FY24 to form Mental Health Agency of Southeast Iowa

Regional Incentive Fund

\$26.5 million in excess fund balances credited in SFY2023.

\$5.6 million awarded to Polk County Behavioral Health & Disability Services region in SFY2024

\$23,955,430 Incentive Fund balance as of 1/1/2024

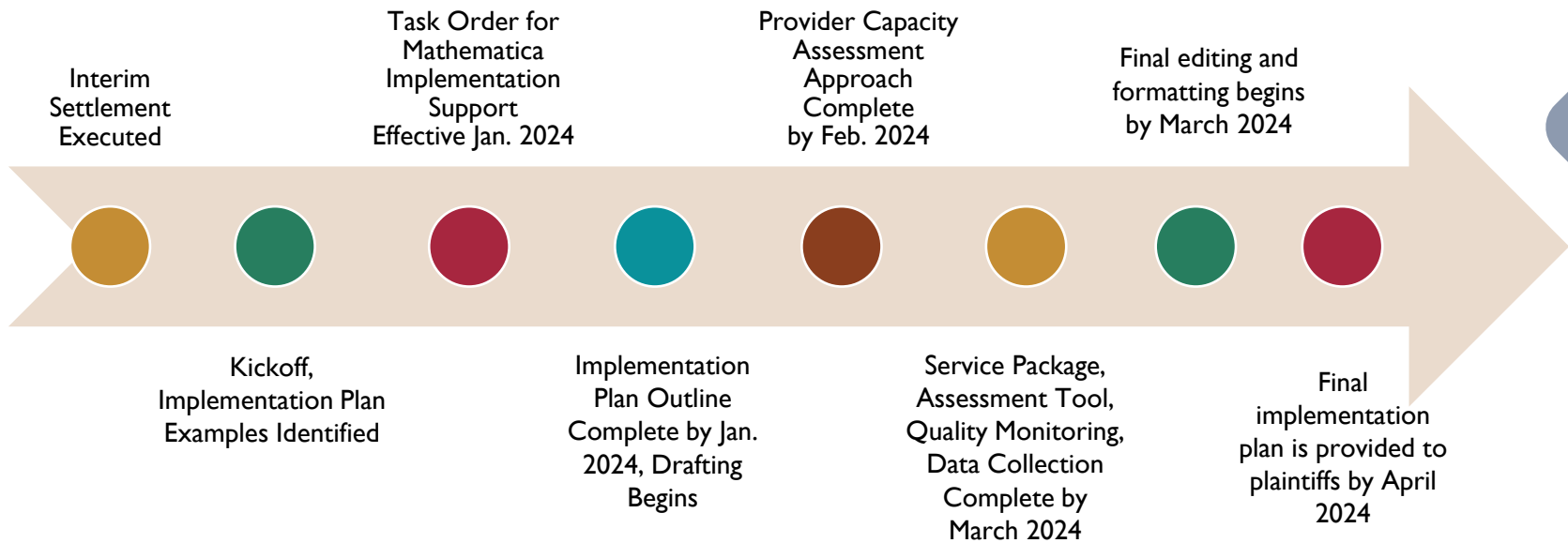
An additional \$15,835,442 anticipated in excess fund balances to be credited in SFY2024

Only Polk County Behavioral Health & Disability Services will meet financial eligibility criteria to apply in SFY2025

Litigation

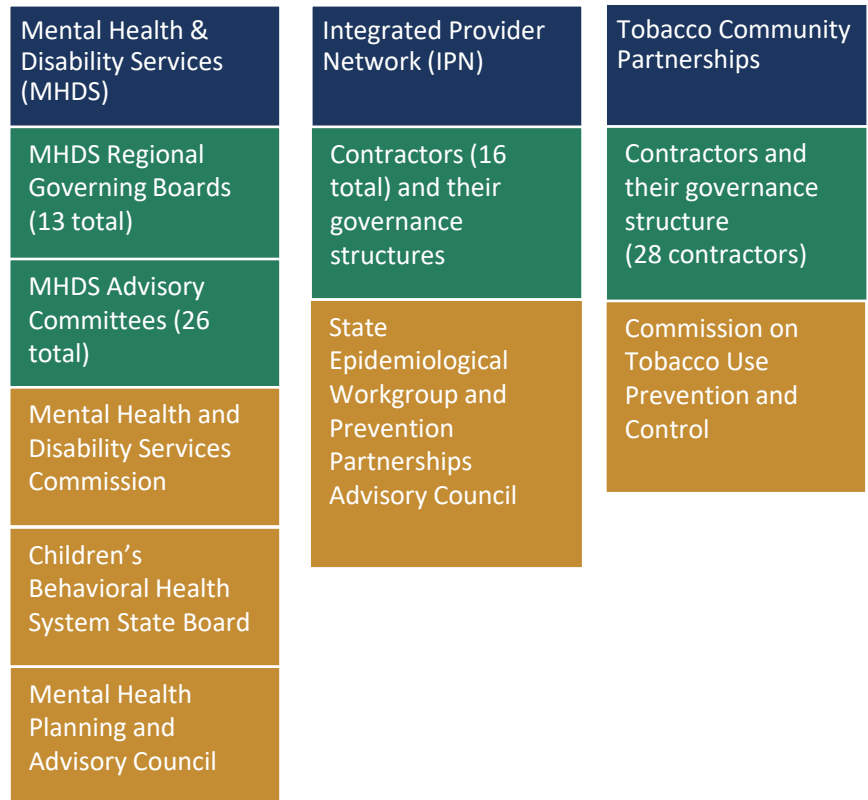


Implementation Plan Milestones



Disparate Access and Services

- ▶ Navigating the system is confusing for lowans accessing services.
- ▶ Outcomes for lowans are not satisfactory.
- ▶ There's a large amount of duplicative administration system-wide.



Innovation in Iowa's Behavioral Health System



Questions?

Nick Crawford

HHS Legislative Liaison

Ncrawfo@dhs.state.ia.us

