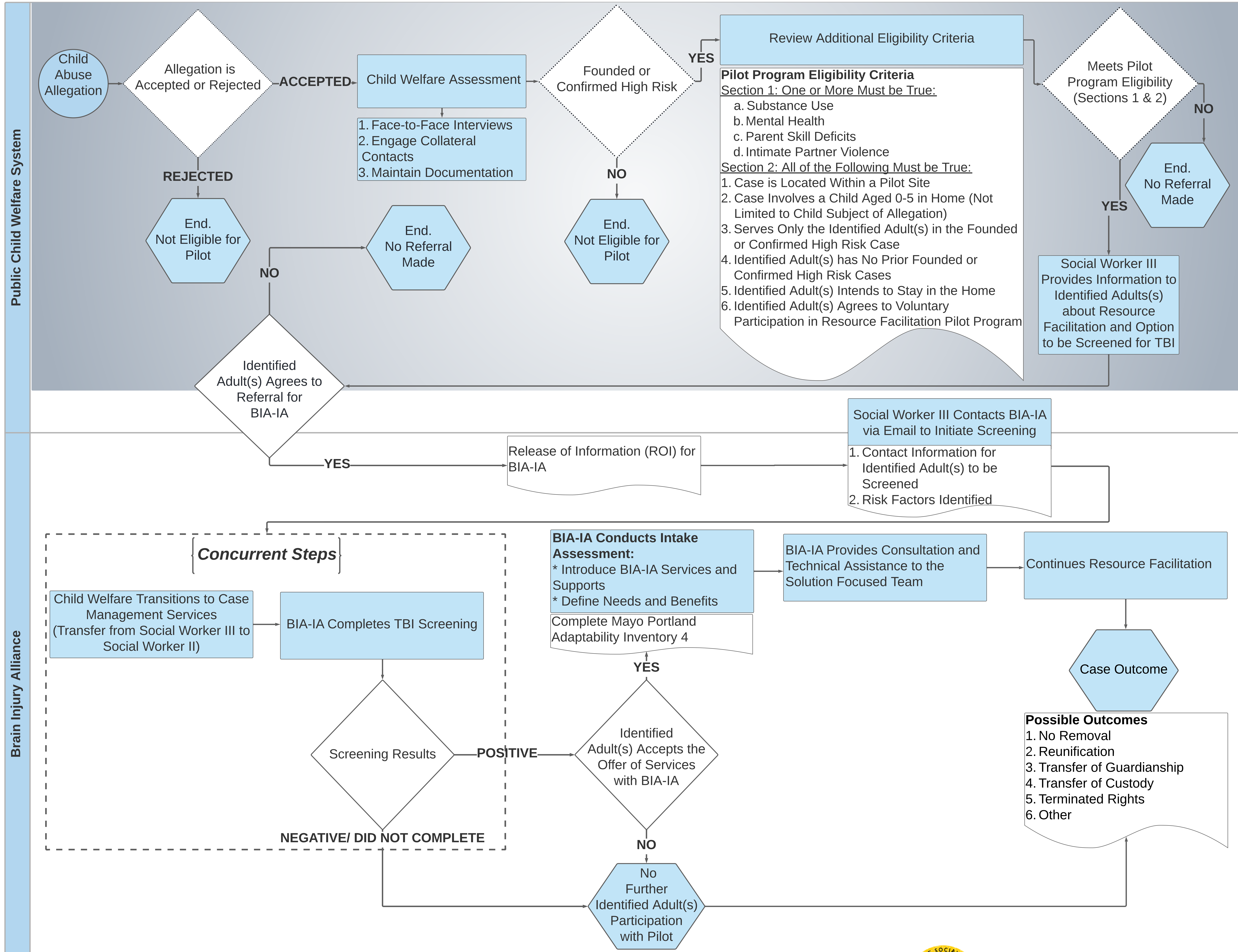


Iowa NeuroResource Facilitation Child Welfare Collaborative Pilot Project: Process Map

July 2022

*Gray Section Represents Parts of the Process that Occurs within the Child Welfare System, Prior to Identified Adults Engaging in the Pilot Program.



Designed by Schueller, A., Quan, N. & Richardson, B. (2021).

Contact Information: abby-schueller@uiowa.edu, nayong-quan@uiowa.edu, brad-richardson@uiowa.edu

The TBI State Partnership Program is supported by the Administration for Community Living (ACL), U.S Department of Health and Human Services (HHS) as part of a financial assistance totaling \$300,269 with 66% funded by ACL/HHS and \$100,090 with 33% funded by non-federal source(s). The contents are those of the author(s) and do not necessarily represent the official views of, nor an endorsement, by ACL/HHS, or the U.S. Government.