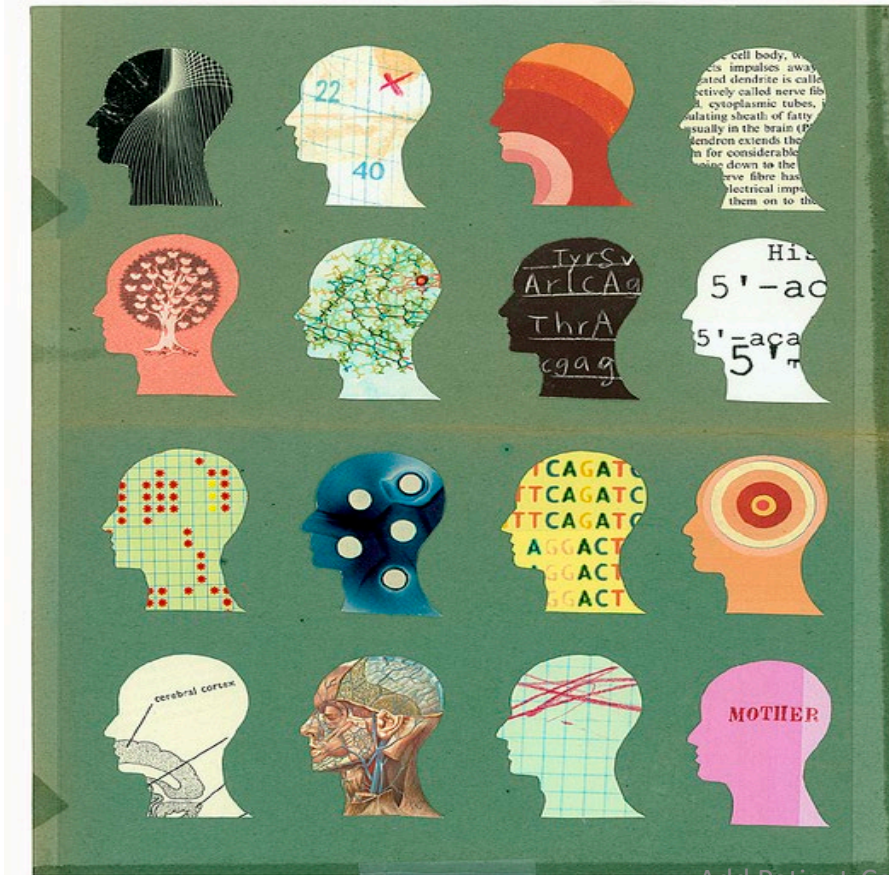


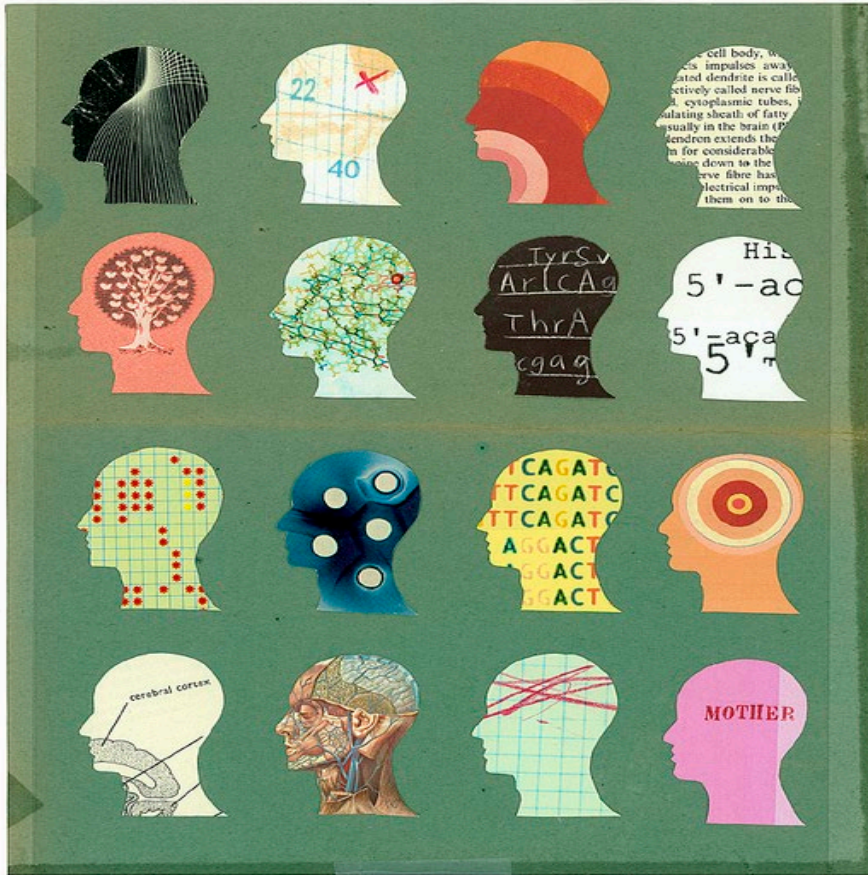
A Changing Population of Clients & Healthcare Professionals in the Future

Reality- primary care



- 25% of visits recorded in primary care are for people who have a psychiatric disorder.
- Nearly 50% of patients with chronic medical diseases have comorbid behavioral health conditions
- Up to 70% of patients are under recognized or undertreated

Reality- primary care



- 25% of visits recorded in primary care are for people who have a psychiatric disorder.
- Nearly 50% of patients with chronic medical diseases have comorbid behavioral health conditions
- Up to 70% of patients are under recognized or undertreated

Fragmented health care

\$\$

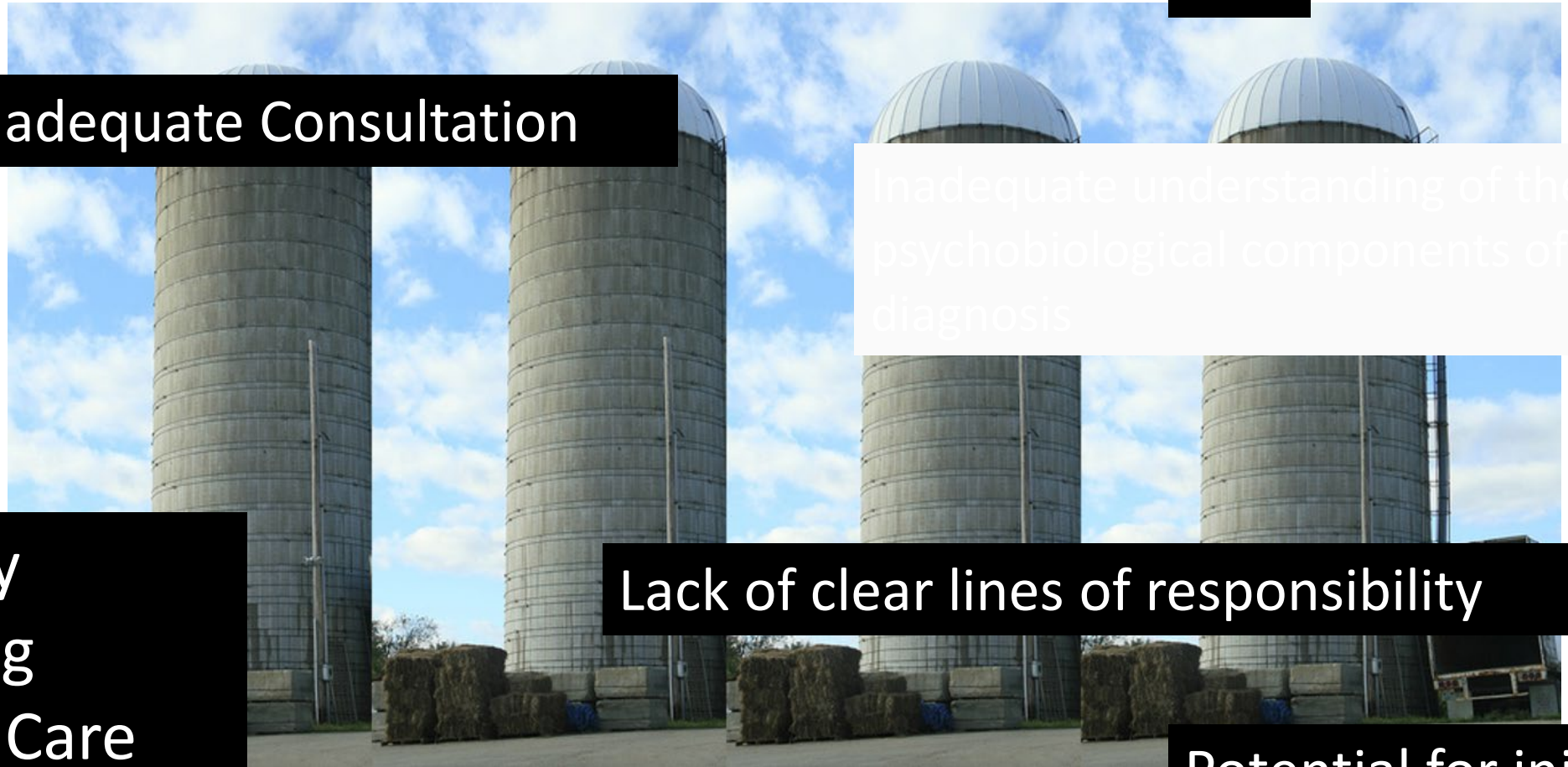
Inadequate Consultation

Inadequate understanding of the psychobiological components of all diagnosis

Difficulty accessing Primary Care

Lack of clear lines of responsibility

Potential for injury



The Problem



-\$193b

Serious mental illness costs America \$193.2 billion in lost earning every year.³

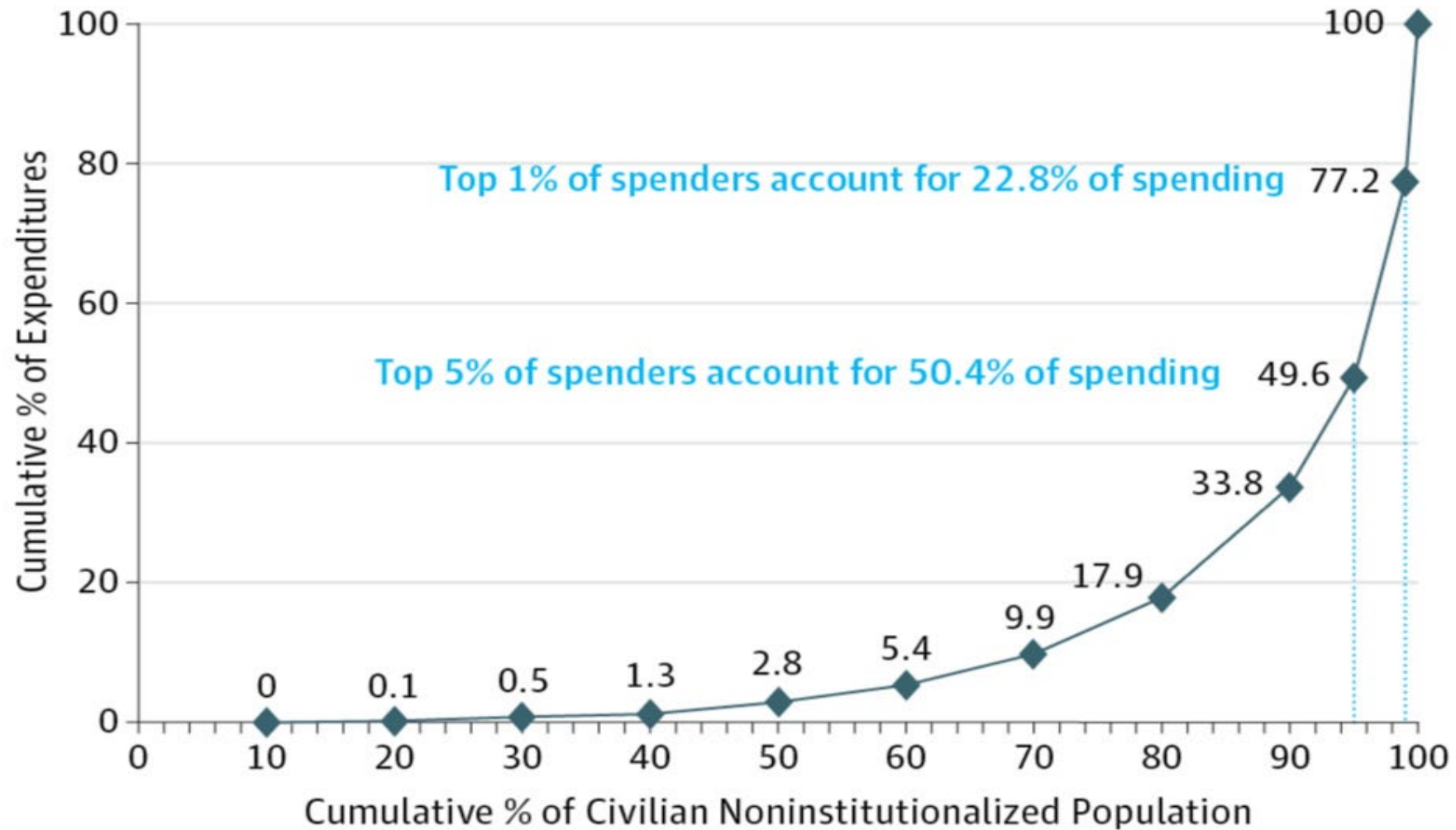
Those with a Mental Health condition die **25 years** earlier than their peers!!

Iowa ranks as 49th worst state in mental health care



5% of patients account for nearly half of the nation's total spending on health care.

High-needs patients



High-needs patients

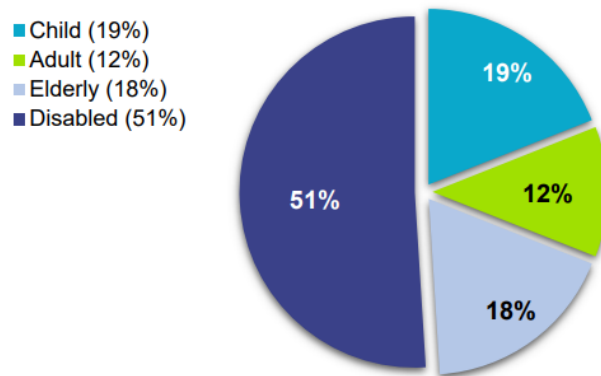
1. Clinical and functional groups	Children with complex needs	Non-elderly disabled	Multiple chronic	Major complex chronic	Frail elderly	Advancing illness
	2. Behavioral and social assessment					
	Behavioral Health Factors					
	Social Risk Factors					

The new vision

- Integration of behavioral and primary health care
 - Increased access to care
 - Coordination of care
 - Cost savings
- Nurse-designed model of care
 - Health holistically defined
 - Individual and family- and community-centric approach to care
 - Relationship-based care
 - Shift from episodic individual care to continuous group or public health approach
- Dually certified NPs/DNPs

Problem

SFY19 Iowa Medicaid Expenditures



Iowa Department of Human Services

- Chronic disease drives costs
 - 5% account for 48% of acute care costs
- Dual eligible (eligible for Medicare and Medicaid)
 - 50% of dual eligible are adults with Serious Mental Illness
 - 70,000 dual eligible adults cost >\$1 billion dollars