

# Certified Community Behavioral Health Clinics (CCBHC)

## **STAKEHOLDER ENGAGEMENT COMMITTEE**

Laura Larkin, CCBHC Project  
Director

March 12, 2024

# Agenda

**Welcome and  
Introductions**



**CCBHC Certification  
Process**



**CCBHC Demonstration  
Application**



**Next Steps and  
Considerations**



**Public Comment**

# Welcome and Introductions

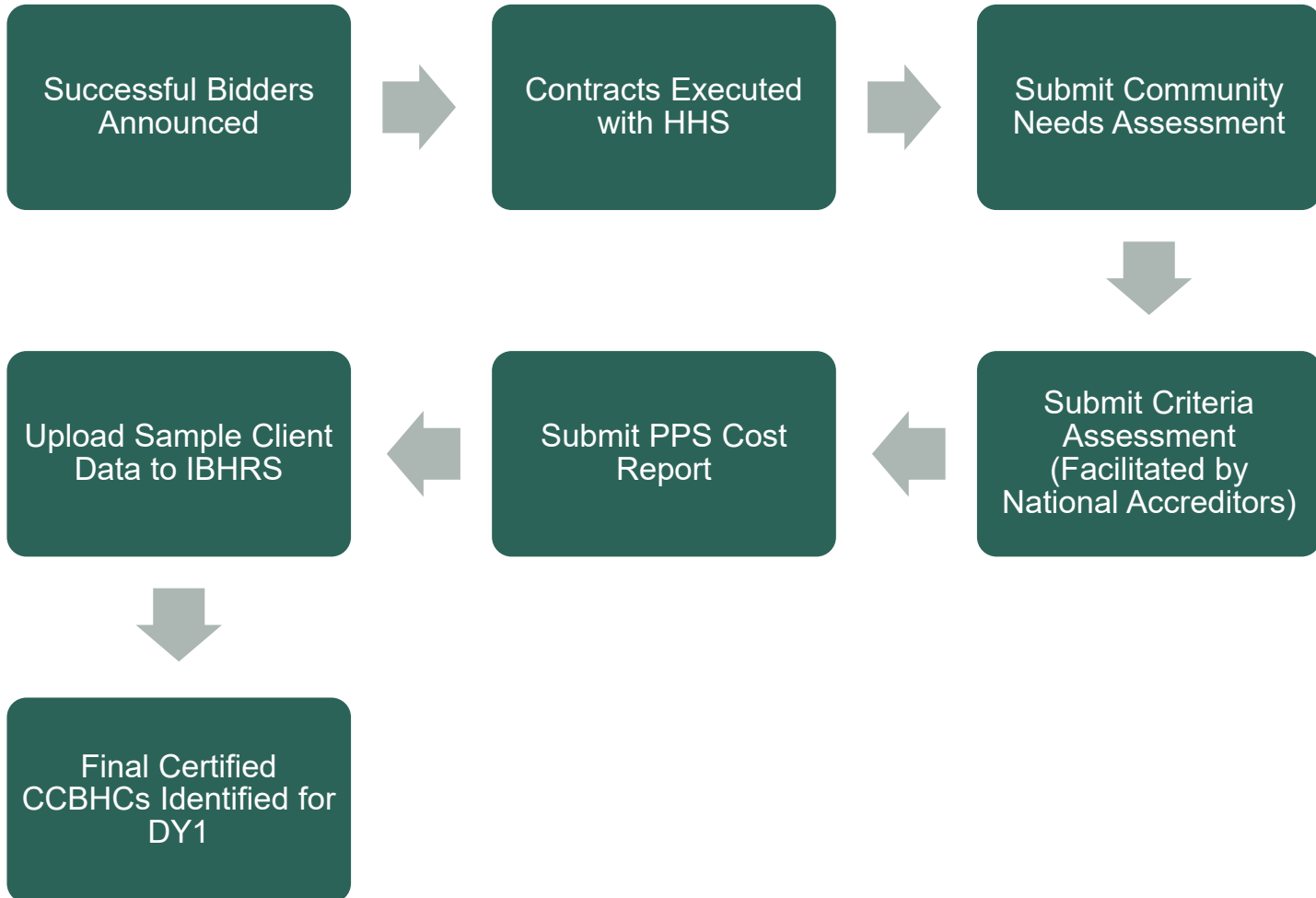


# CCBHC Certification Process Update



Health and  
Human Services

# CCBHC Certification Process



# Certification Outcomes

There are two certification tracks for eligible providers:

## Provisional certification for DY1

- Providers that are provisionally certified must meet the following conditions to participate in the DY1 (7/1/24):
- Complete and submit results from criteria assessment facilitated by national accrediting body
- Address HHS' identified areas of improvement or Corrective Action Plan by 6/1/24
- Participate in technical assistance provided by HHS
- Failure to meet the above requirements will result in participation no earlier than DY2 (7/1/25)

## Pathway to participation for DY2

## Provisionally Certified for DY1

Provider Name	Service Area	Population Served
Abbe Center	Delaware, Benton, Linn, Jones, Iowa, and Johnson	466,055
Berryhill	Humboldt, Calhoun, Webster, Hamilton	69,009
Eyerly Ball	Boone, Story, Polk, Warren counties	676,441
Heartland Family Service	Monona, Harrison, Shelby, Pottawattamie, Cass, Mills, Montgomery, Fremont, Page	185,561
Pathways	Chickasaw, Butler, Bremer, Grundy, Blackhawk, Buchanan	216,163
Plains Area	Plymouth, Cherokee, Buena Vista, Pocahontas, Ida, Sac, Crawford, Carroll	118,591
Prairie Ridge	Kossuth, Winnebago, Worth, Mitchell, Hancock, Cerro Gordo, Floyd, Wright, Franklin, Hardin, Marshall, Tama, Poweshiek	226,343
Robert Young Center	Jackson, Cedar, Clinton, Scott, and Muscatine	300,897
Seasons Center	Lyon, Osceola, Dickinson, Emmet, Sioux, O'Brien, Clay, and Palo Alto	120,768

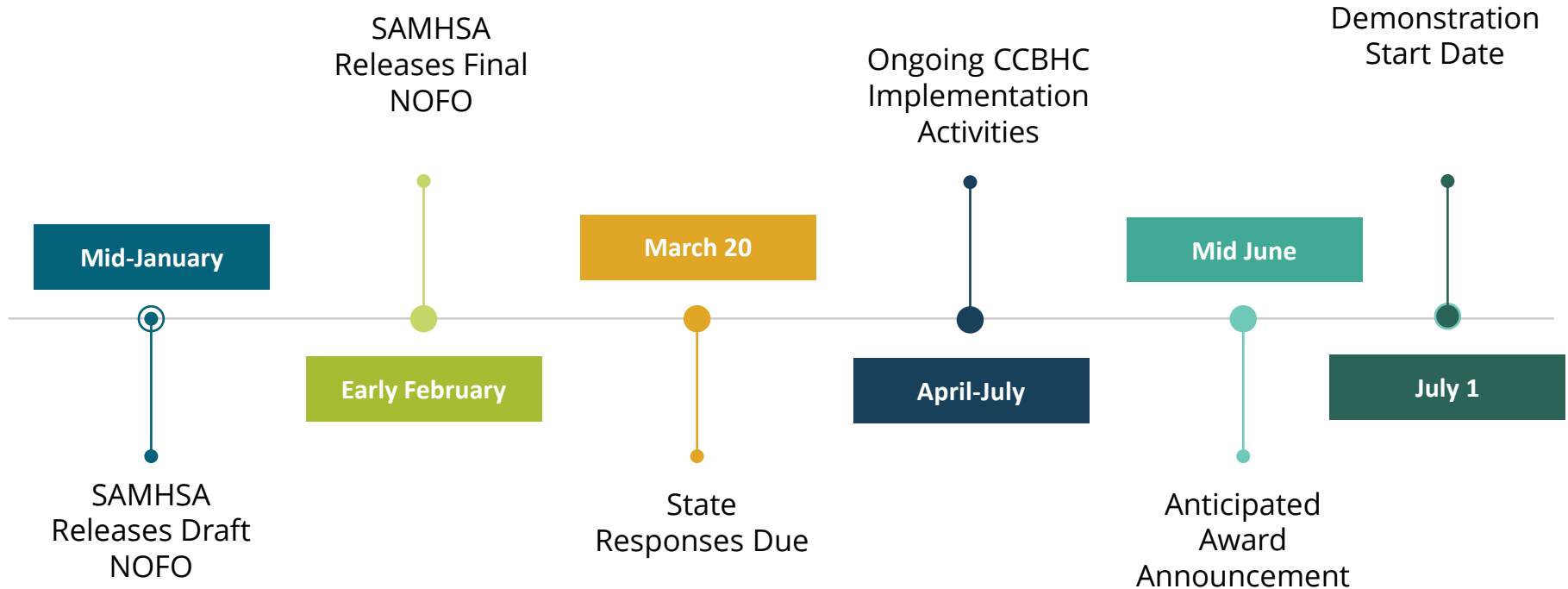
## Pathway to Participation for DY2

Provider Name	Service Area	Population Served
Southern Iowa Mental Health Center	Mahaska, Keokuk, Monroe, Wapello, Jefferson, Appanoose, Davis, and Van Buren	118,408

# CCBHC Demonstration Application



# CCBHC Demonstration Application Timeline



# CCBHC Demonstration Application Components

## Attachments

CCBHC Criteria Compliance Checklist

Agreement to participation in the Demonstration

Description of the targeted Medicaid population served under the  
Demonstration

List of certified CCBHCs, including DCOs

Verification of PPS payment methodology

Scope of services reimbursed under the PPS payment methodology

Budget justification form for planning grant

# CCBHC Demonstration Application Components

## Narrative

Stakeholder Input Process

CCBHC Certification Process

Data & Quality Strategy

National Evaluation Participation

Projected Statewide Impact

Components of the PPS Rate

Quality Bonus Program

# Next Steps and Considerations

# Looking Forward

## **April 1 – July 1, 2024**

- Targeted technical assistance and capacity development to assist provisionally certified providers to meet all requirements for the Demonstration, including:
  - Adoption of CLAS standards for all populations.
  - Achieving necessary data reporting capacity to submit Demonstration metrics.
  - Implementing Continuous Quality Improvement processes.
  - Data reporting requirements.
- Ongoing statewide implementation activities to meet July 1, 2024, go-live expectations.

## **Beyond July 1, 2024**

- Statewide expansion opportunities for CCBHC demonstration in DY2-DY4.

# Public Comment

Laura Larkin

CCBHC Project Director

[IowaCCBHC@dhs.state.ia.us](mailto:IowaCCBHC@dhs.state.ia.us)



Health and  
Human Services