

## Focus Click Once Deployment

This section discusses the deployment of the Focus Application. User help is integrated into the Focus application.

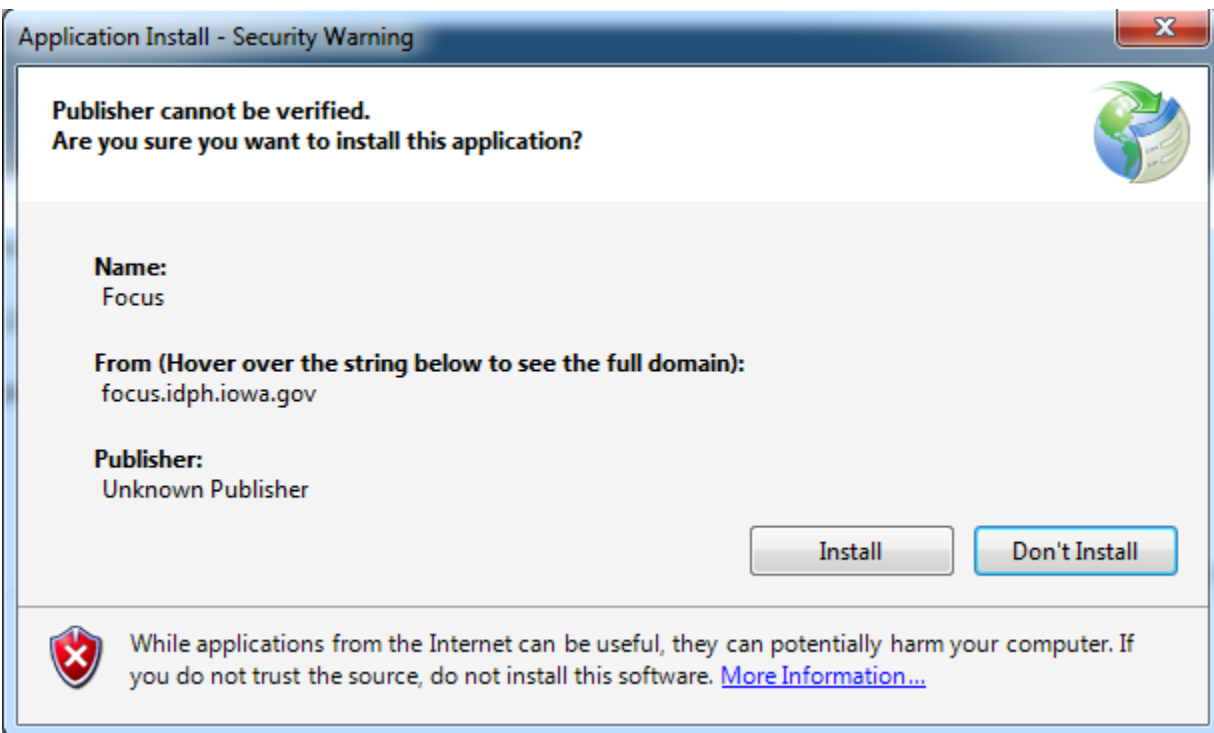
### Application New Deployment

If Focus was never loaded on a user's workstation, the application must be downloaded from the server. Perform the following download procedure.

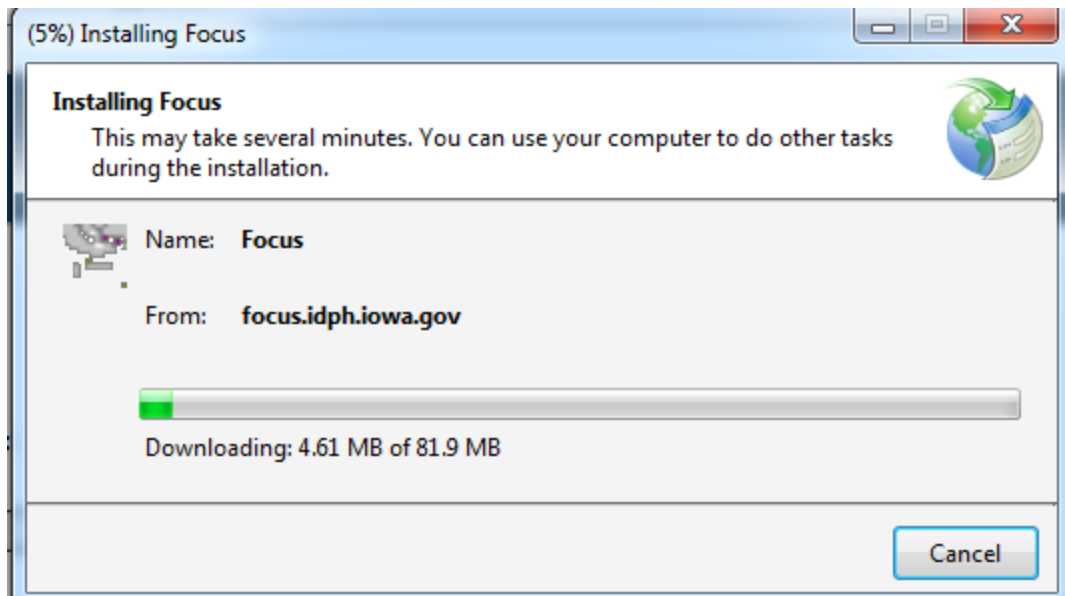
1. Open a web browser, enter <https://focus.idph.iowa.gov/focus/Focus/Publish.htm> and click **OK**.  
**Note:** This can also be accomplished by clicking a link to this web page provided in an e-mail sent from the system administrator.



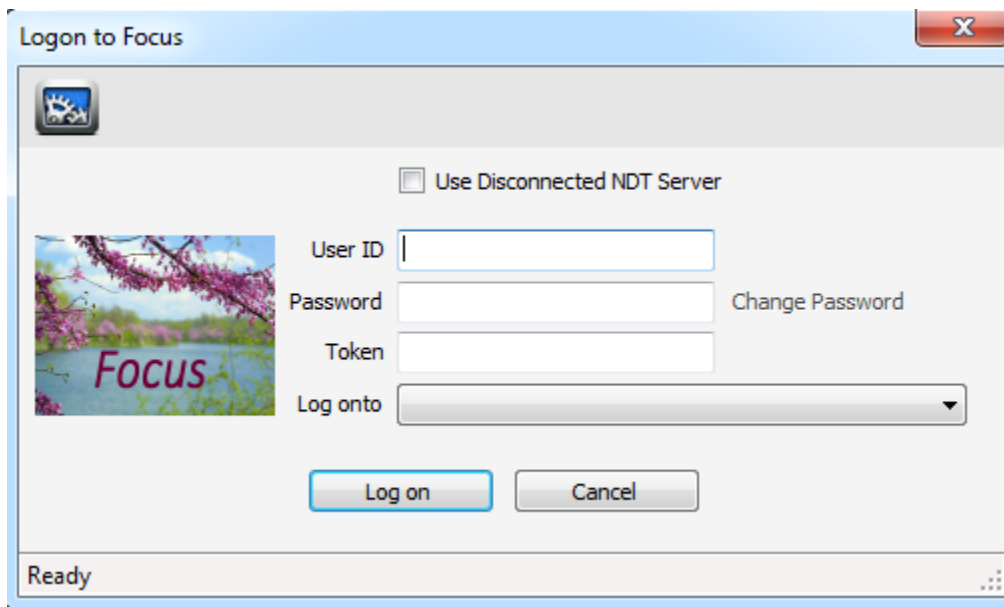
2. Click **Install** to start the installation process. Depending on settings, a security pop-up window may appear.



3. Click **Install**. A pop-up window is displayed, showing the progress of the installation. The installation may require several minutes.



When the installation is complete, the **Logon** pop-up window is displayed.



4. Enter a user ID, password, and token and then press the **Tab** key. The system authenticates the user's credentials and retrieves the clinic list for which access was granted.
5. Select the clinic or accept the default clinic that is displayed in the **Log onto** field.
6. Click **Log on**.