



Behavioral Health

Behavioral Health Alignment



Why System Alignment?

In the current system:

- Navigation is confusing for lowans trying to access services
- Outcomes are not satisfactory
- There's a large amount of duplicative administrative red tape which is burdensome for people, providers, and the system.

Through alignment Iowa will:

- Create consistent pathways for accessing services
- Utilize existing funding more effectively to achieve outcomes
- Consolidate and streamline administrative work



Behavioral Health System Alignment

Support a recovery-oriented system with a heightened focus on prevention and early intervention

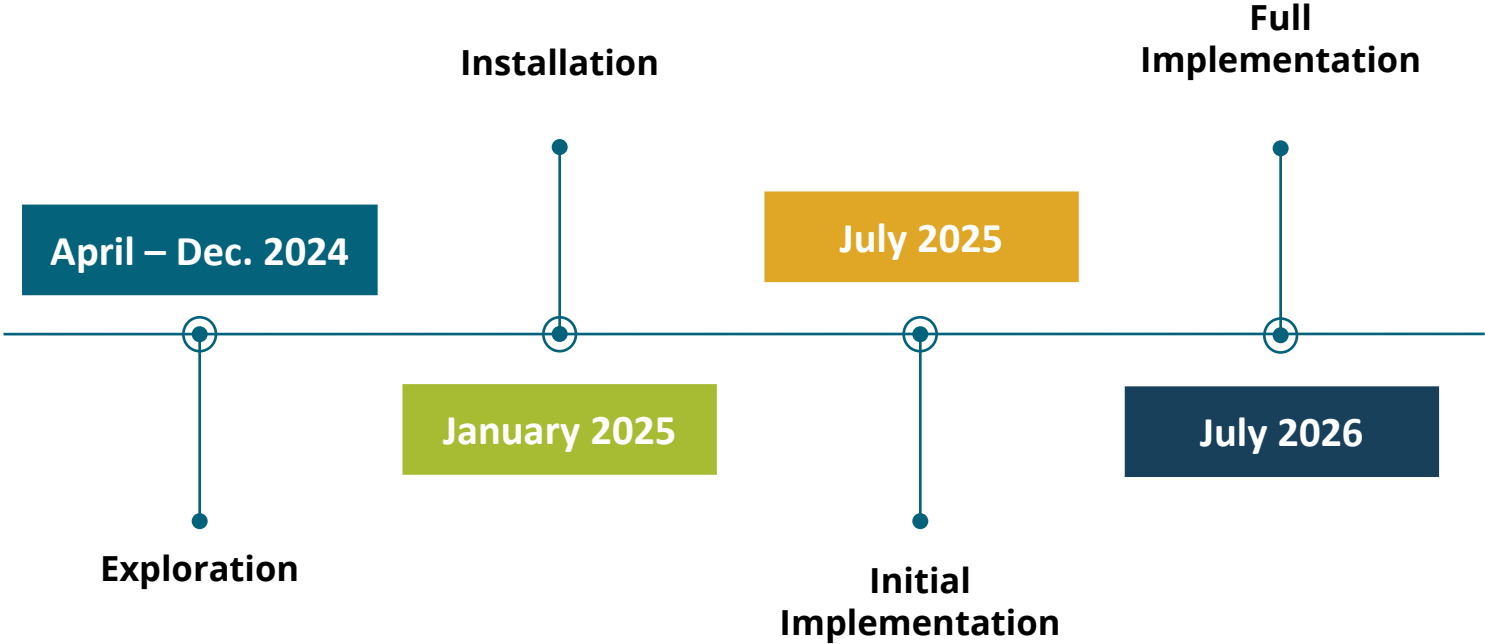
Collaborate with stakeholders to develop a statewide plan for behavioral health that ensures consistency, focused attention and coordinated care.

Reduce system redundancies by linking Federal, State and local authority and governance

Eliminate administrative red tape and duplicative effort.

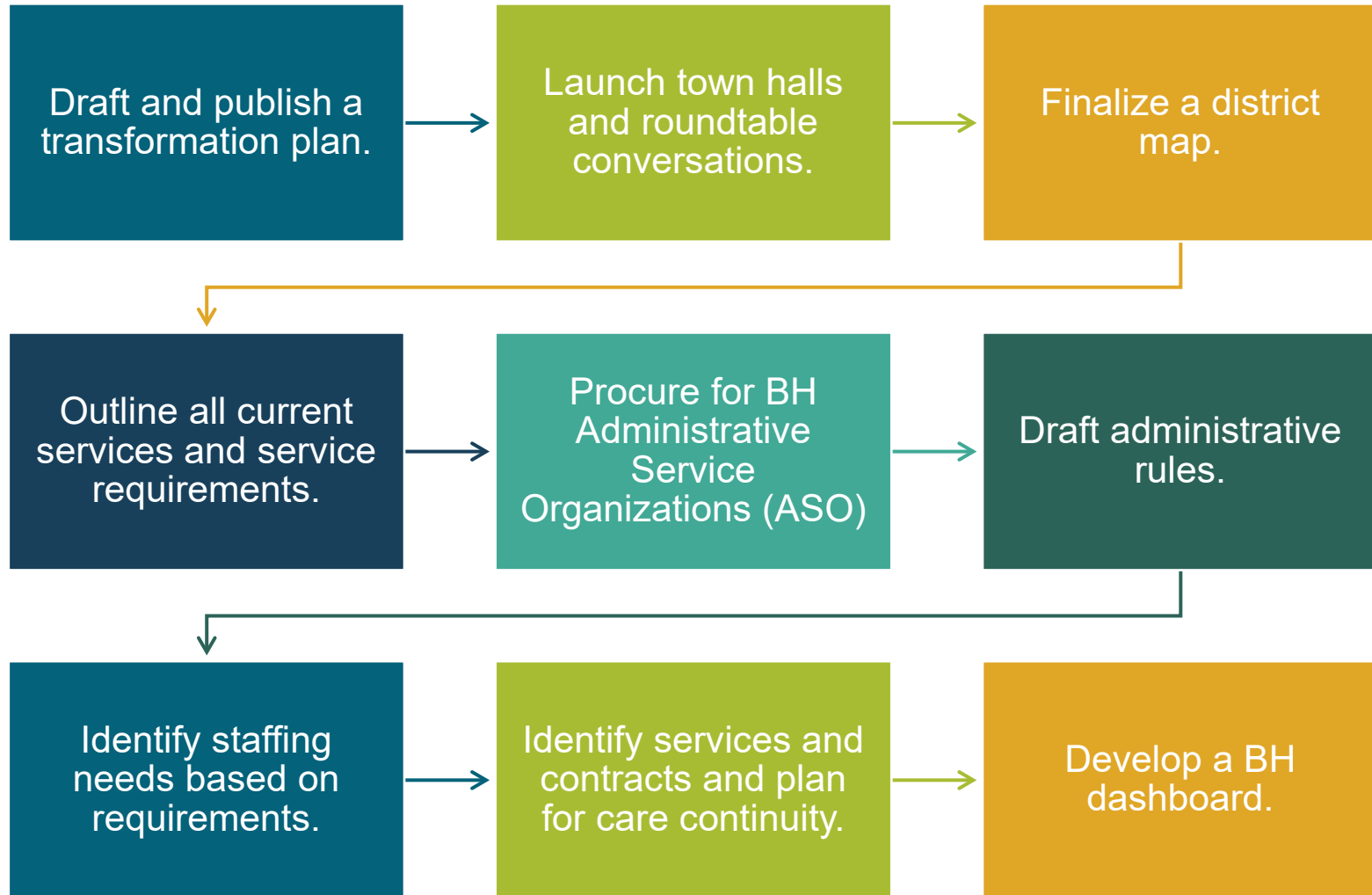


BH Alignment Timeline



1

Exploration





2

Installation – Part 1



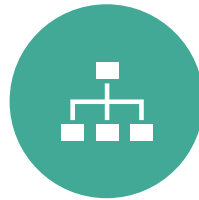
Develop HHS district websites.



Training on new roles and responsibilities.



Planning for cost allocation.



Establish ASO governance, oversight and manual.



Report on progress.



Planning for care continuity.

2 Installation – Part 2



Execute ASO contracts.



Establish ASO gateways and implementation monitoring.



Training and technical assistance for the ASOs.



Review and approve the initial ASO plan and budgets.



THRIVE navigation.

3

Initial Implementation



Technical assistance and training.



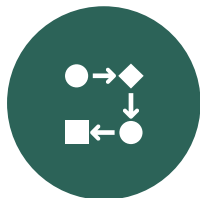
Initial implementation of monitoring and reporting.



Establish HHS connections to each district and to advisory councils.



Establish a statewide Behavioral Health planning cadence.



Make refinements to block grant planning, as needed.



Refine guidance materials for providers, ASO's, etc.



4

Full Implementation

01

Develop fidelity monitoring.

02

Implement licensure, certification and accreditation alignment.

03

Establish financial auditing.

04

Refine outcomes and reporting beyond implementation.

05

Ensure there's a connection between the BH system and future HHS system development.