



Behavioral Health Districts

Kelly Garcia, Director, Iowa HHS

Marissa Eyanson, Behavioral
Health Director, Iowa HHS

Summer 2024

Overview

Why System Alignment?

Behavioral Health

- Vision
- Changes
- Timeline

Facilitated Feedback

Learn More & Close

Why System Alignment?



In the current system:

- Navigation is confusing.
- Outcomes are not satisfactory.
- There's a large amount of duplicative administrative red tape.

Through alignment Iowa will:

- Create consistent pathways for accessing services.
- Use existing funding more effectively towards outcomes.
- Streamline administrative work.



Behavioral Health

Building a System for Iowa's Future

What is Behavioral Health?



Behavioral health means mental health, addictive disorders and life stressors and crises.



Behavioral health disorders are common and treatable.

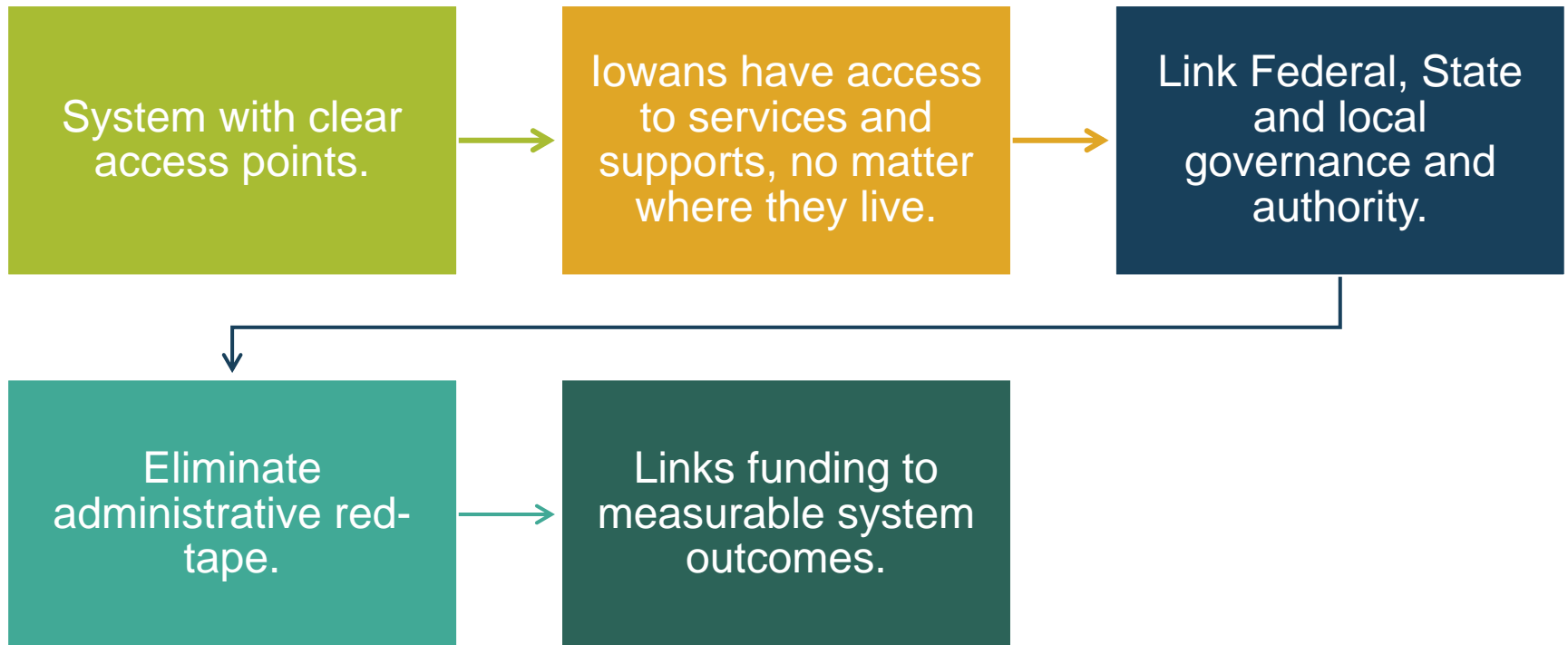


Behavioral health care refers to a full spectrum of prevention, early intervention, treatment, recovery support and crisis care.

“For the first time, we will have an intentionally planned system that includes in statute, prevention, treatment and recovery.
It’s phenomenal.”

Kelly Garcia, Iowa HHS Director

Vision for Behavioral Health



What will change?



Organize local behavioral health districts.



Procure behavioral health administrative service organizations.



Form local advisory councils.




Develop a comprehensive statewide plan for behavioral health.



Incorporate stakeholder feedback and public comment.

Behavioral Health Administrative Service Organizations (BH-ASO)


Iowa HHS will hire BH-ASOs to organize local service delivery and ensure access to high quality services.



BH-ASOs will be funded by braiding state and federal funds.



Important services, like crisis services, will be required and available for all Iowans.



Other services are safety net services paid for by BH-ASOs.

HHS

Health and Human Services

- Establishes service system districts
- Develops the service system state plan; approves district plans
- Administers funding to lead entities
- Develops service definitions and standards, reporting requirements, and performance outcomes
- Provides training and technical assistance to lead entities
- Provides activities as indicated by the service system state plan

Lead Entity

Administrative Services Organization

- Develops and implements a district-wide plan to ensure adequate service provision in every county within the district.
- Contracts with local providers.
- Provides training and technical assistance to contracted local providers.
- Ensures service quality and performance outcomes.
- May provide activities and services as indicated by the district plan
- Collaborates with HHS and other district lead entities for the service system.
- Reports progress and outcomes to HHS.

Local Provider

For example: substance use prevention & treatment providers, law enforcement agencies, mental health providers, etc.

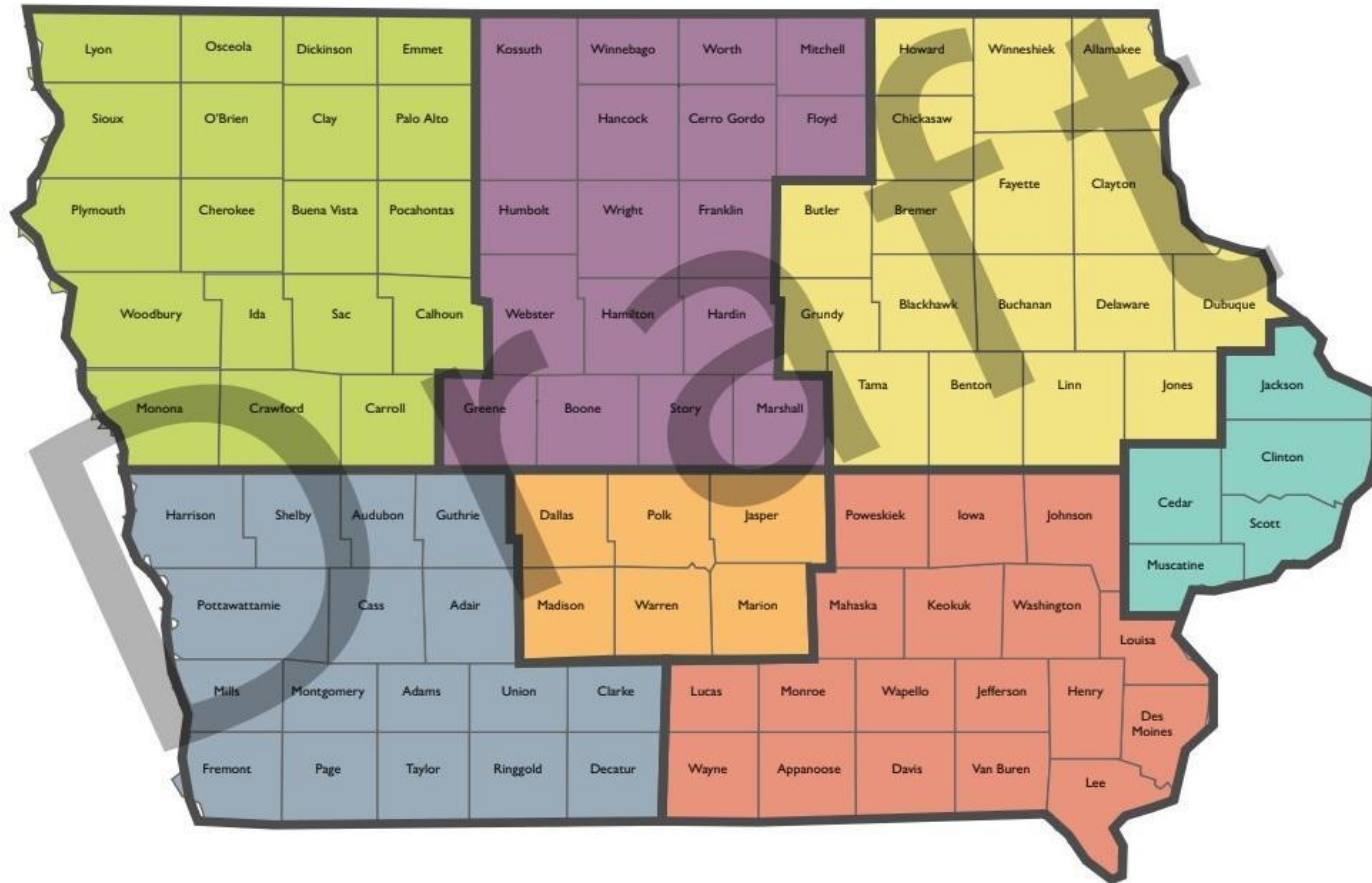
Contracts with a lead entity(ies)

Provides activities and services according to the lead entity district plan

Collaborates with the lead entity and other local providers in the district to ensure service provision in every county within the district

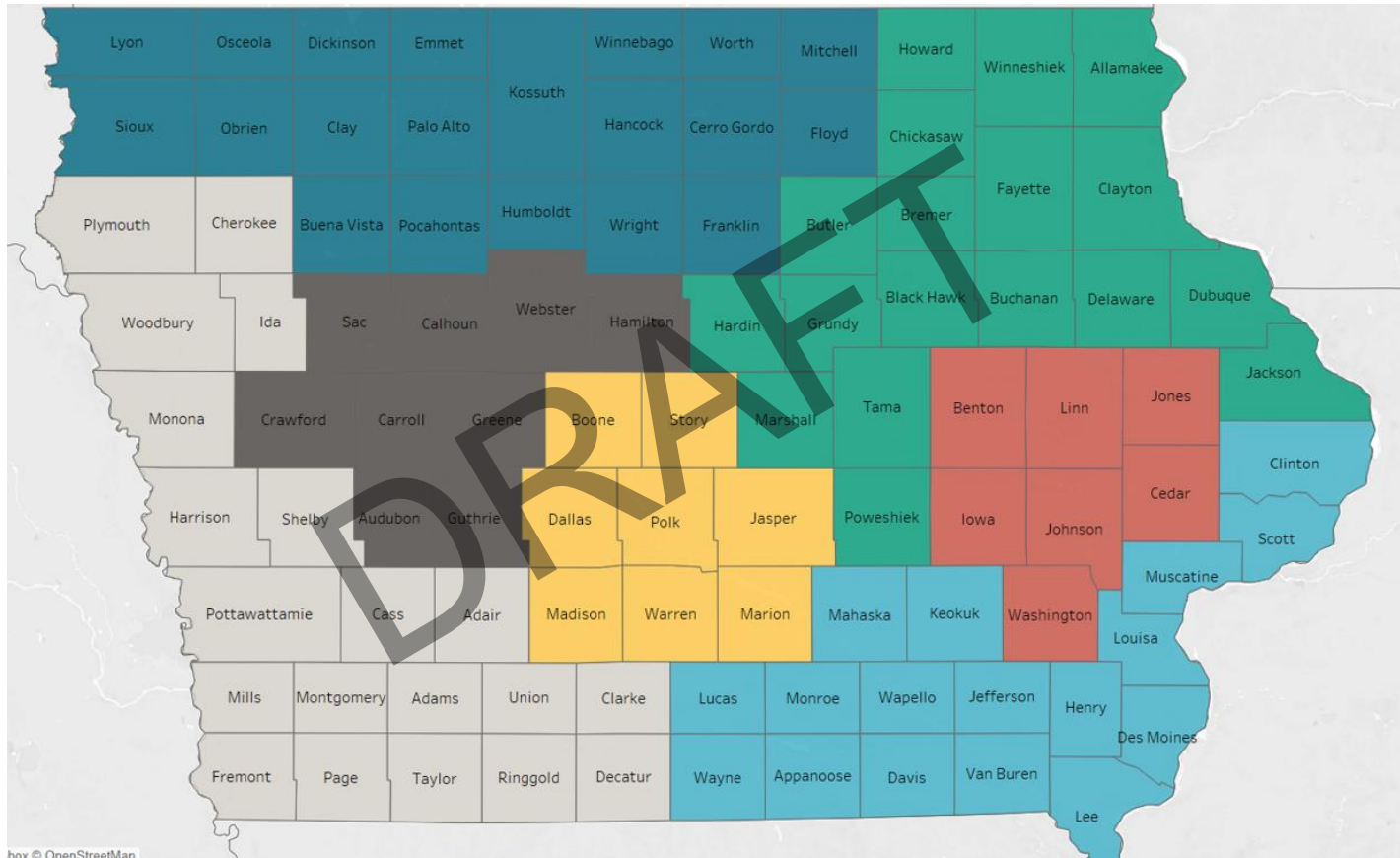
Reports progress and outcome data to the district lead entity(ies)

Behavioral Health District – Option 1



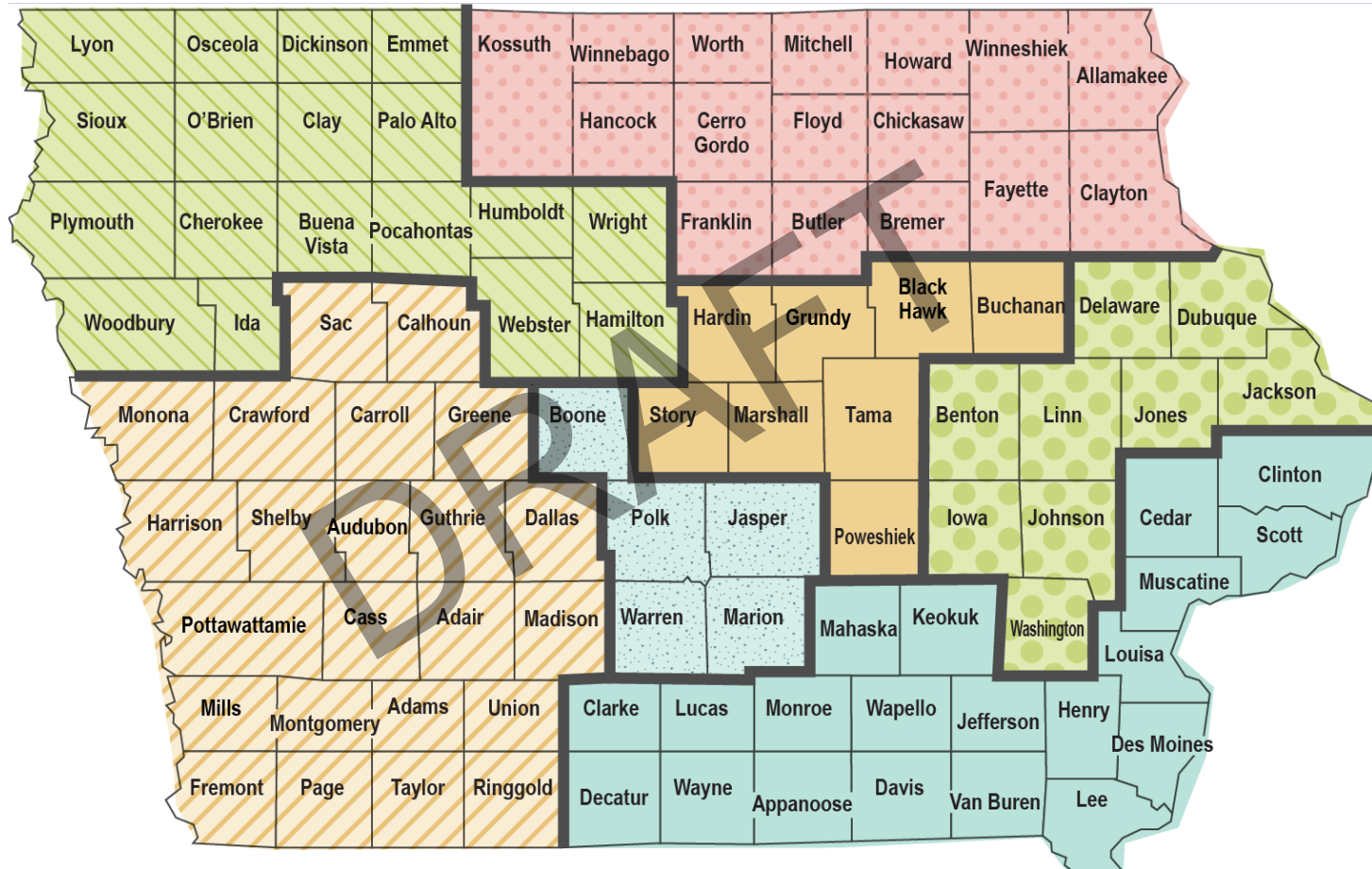
The proposed option 1 map is reflecting patterns of care related specifically to behavioral health.

Behavioral Health District – Option 2



The proposed option 2 map shows the current regions that the Area Agencies on Aging cover throughout the state.

Behavioral Health Districts – Option 3



The proposed option 3 map reflects the areas currently covered by community action agencies.

Facilitated Feedback

Health Management
Associates (HMA)



Thank you!

Learn more about the Behavioral Health Alignment on the HHS website.



Health and
Human Services



Scan me!

<https://hhs.iowa.gov/initiatives/system-alignment/ibhss>