



# Iowa HHS System Alignment

**AGING AND DISABILITY SERVICES  
and BEHAVIORAL HEALTH**

**Kelly Garcia**, Director, Iowa HHS

**Zachary Rhein**, Aging & Disability  
Services Director, Iowa HHS

**Marissa Eyanson**, Behavioral  
Health Director, Iowa HHS

Summer 2024

# Overview

## Why System Alignment?

## Aging & Disability Resource Centers

- What is an ADRC?
- Goals
- Disability Access Points

## Behavioral Health

- Vision
- Changes
- Timeline

## Facilitated Feedback

# Why System Alignment?



## **In the current system:**

- Navigation is confusing..
- Outcomes are not satisfactory.
- There's a large amount of duplicative administrative red tape.

## **Through alignment Iowa will:**

- Create consistent pathways for accessing services.
- Use existing funding more effectively towards outcomes.
- Streamline administrative work.

“For the first time, we will have an intentionally planned system that includes in statute, prevention, treatment and recovery.  
It’s phenomenal.”

*Kelly Garcia, Iowa HHS Director*

---



# Aging & Disability Resource Center (ADRC) Expansion

Aging & Disability Services

# What is an Aging and Disability Resource Center (ADRC)?

Hope-centered  
service navigation.

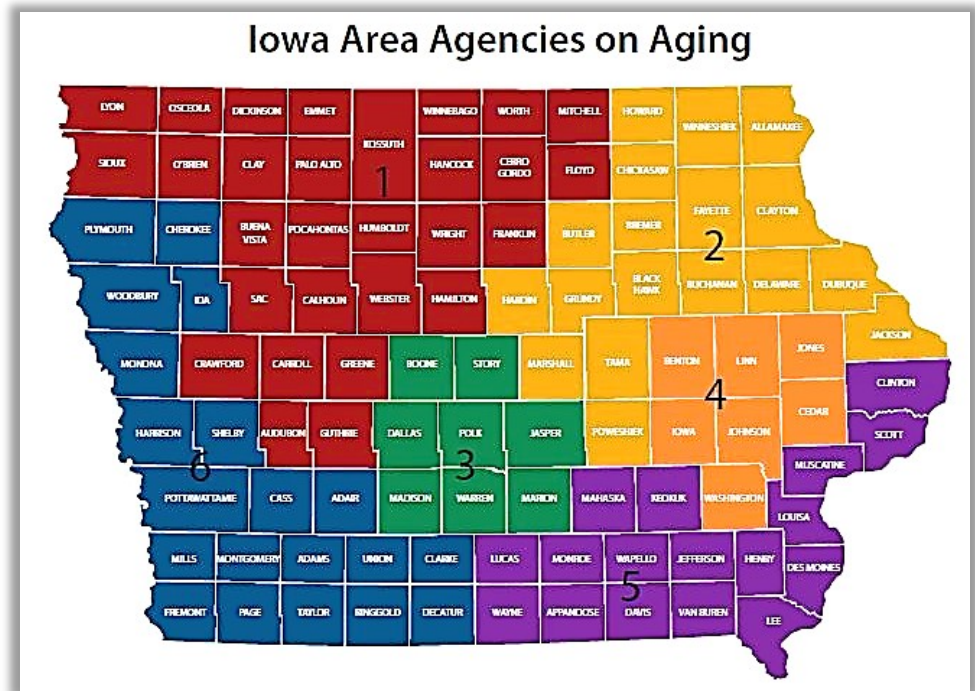
Provides objective  
information, advice,  
and counseling on  
LTSS.

Helps people apply for  
programs and  
benefits.

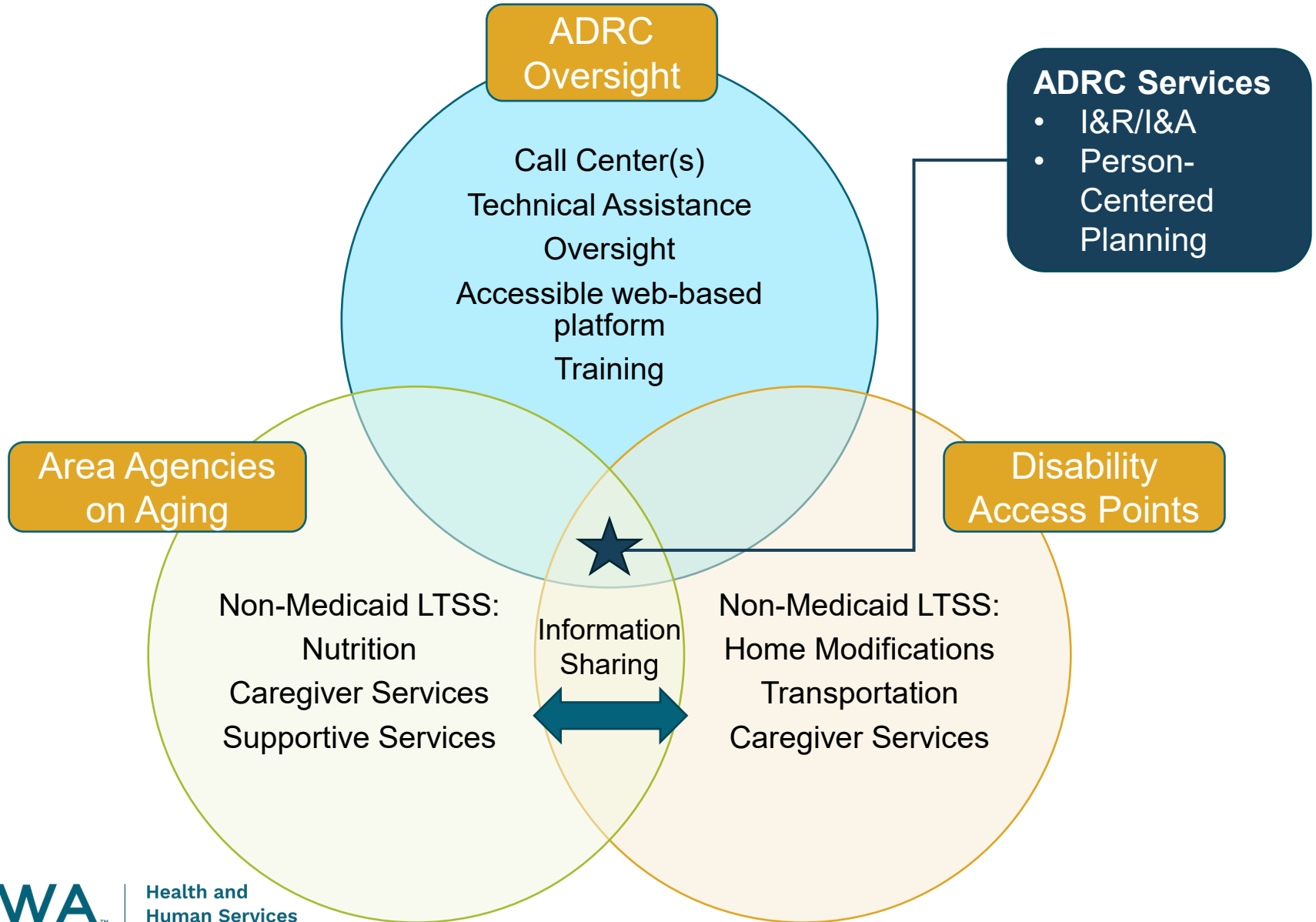
Empowers people to  
make informed  
decisions about their  
LTSS.

# What is the current state of ADRC in Iowa?

- ▶ Iowa AAAs (six) are designated as the ADRCs.
- ▶ Lack of funding and ability to serve lowans with disabilities under age 60.
- ▶ Aging focused expertise.

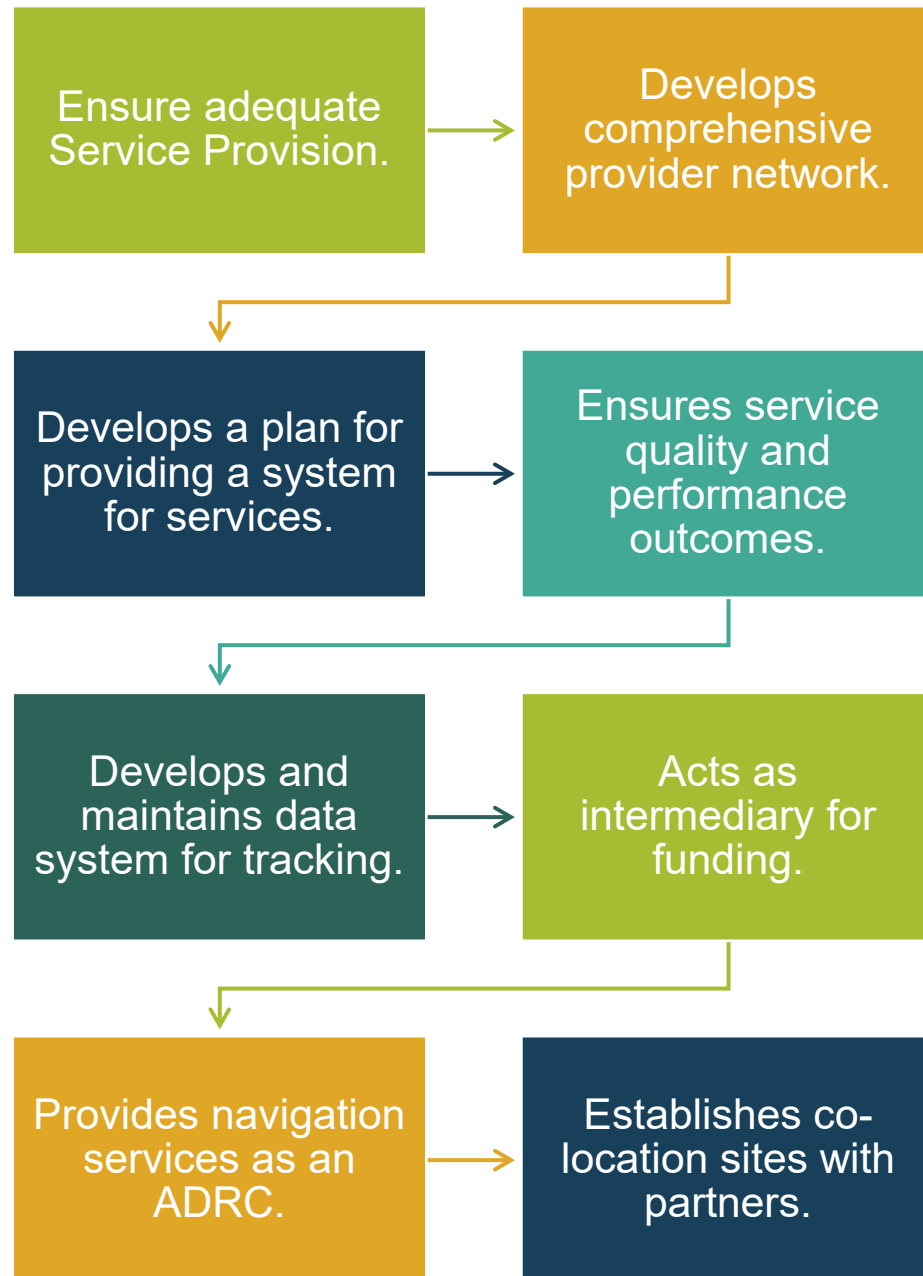


# Coordinated Aging & Disability Network





# Area Agency on Aging (AAA) and Disability Access Points Functions



# ADRC ASO Functions

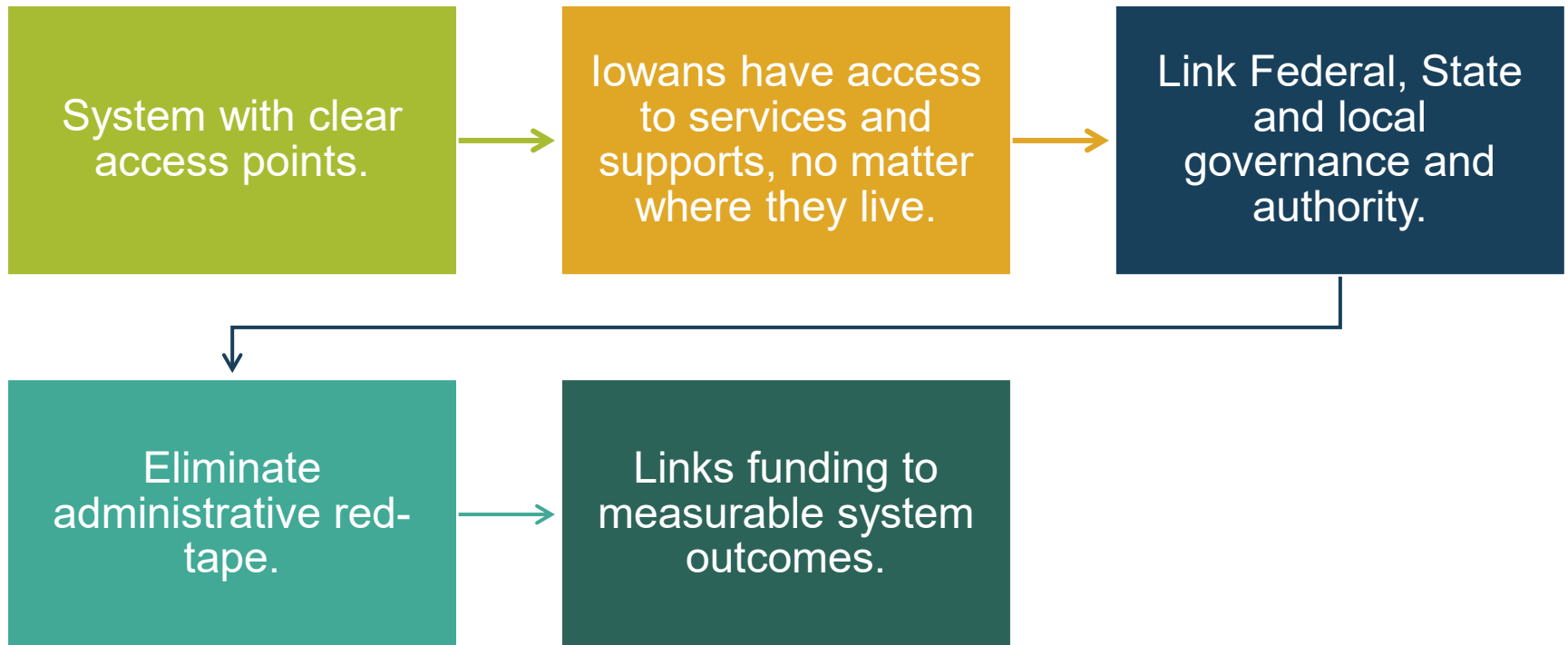




# Behavioral Health

Building a System for Iowa's Future

# Vision for Behavioral Health



# What is Behavioral Health?



Behavioral health means mental health, addictive disorders and life stressors and crises.



Behavioral health disorders are common and treatable.



Behavioral health care refers to a full spectrum of prevention, early intervention, treatment, recovery support and crisis care.

# Behavioral Health Administrative Service Organizations (BH-ASO)


Iowa HHS will hire BH-ASOs to organize local service delivery and ensure access to high quality services.



BH-ASOs will be funded by braiding state and federal funds.



Important services, like crisis services, will be required and available for all Iowans.



Other services are safety net services paid for by BH-ASOs.

# What will change?



Organize local behavioral health districts.



Procure behavioral health administrative service organizations.



Form local advisory councils.



Develop a comprehensive statewide plan for behavioral health.



Incorporate stakeholder feedback and public comment.

# HHS

## Health and Human Services

- Establishes service system districts
- Develops the service system state plan; approves district plans
- Administers funding to lead entities
- Develops service definitions and standards, reporting requirements, and performance outcomes
- Provides training and technical assistance to lead entities
- Provides activities as indicated by the service system state plan

# Lead Entity

- Develops and implements a district-wide plan to ensure adequate service provision in every county within the district.
- Contracts with local providers.
- Provides training and technical assistance to contracted local providers.
- Ensures service quality and performance outcomes.
- May provide activities and services as indicated by the district plan
- Collaborates with HHS and other district lead entities for the service system.
- Reports progress and outcomes to HHS.

# Local Provider

For example: community partnerships, substance use treatment providers, disability service providers, etc.

Contracts with a lead entity(ies)

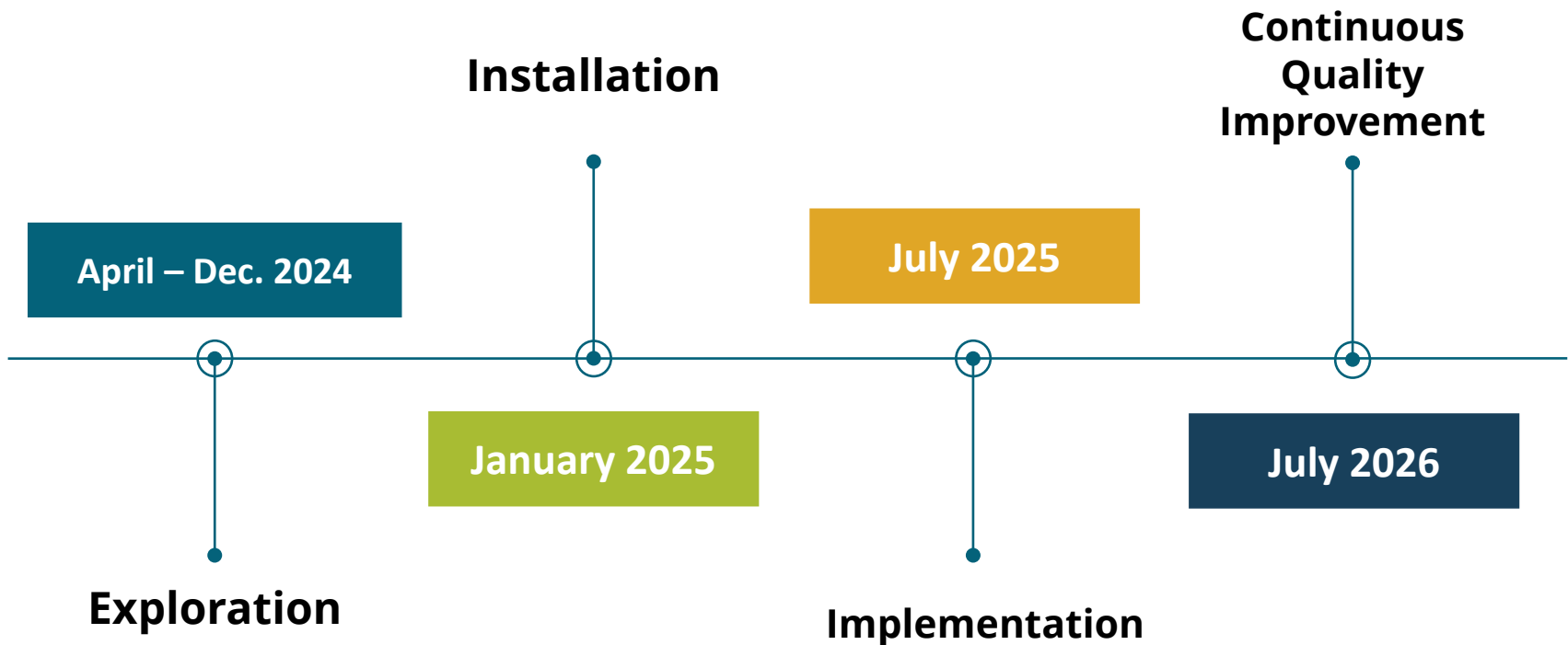
Provides activities and services according to the lead entity district plan

Collaborates with the lead entity and other local providers in the district to ensure service provision in every county within the district

Reports progress and outcome data to the district lead entity(ies)



# Implementation Timeline



Thank you!

Learn more about the Behavioral Health Alignment on the HHS website.



Health and  
Human Services



Scan me!

<https://hhs.iowa.gov/initiatives/system-alignment/ibhss>