

Session 4:
Building Health Equity
Capacity in Iowa CAHs:
Interpersonal Safety
and Utility Needs

David Palm, PhD
Center For Health Policy
College of Public Health
University Of Nebraska Medical Center
August 28, 2024

Meet & Greet

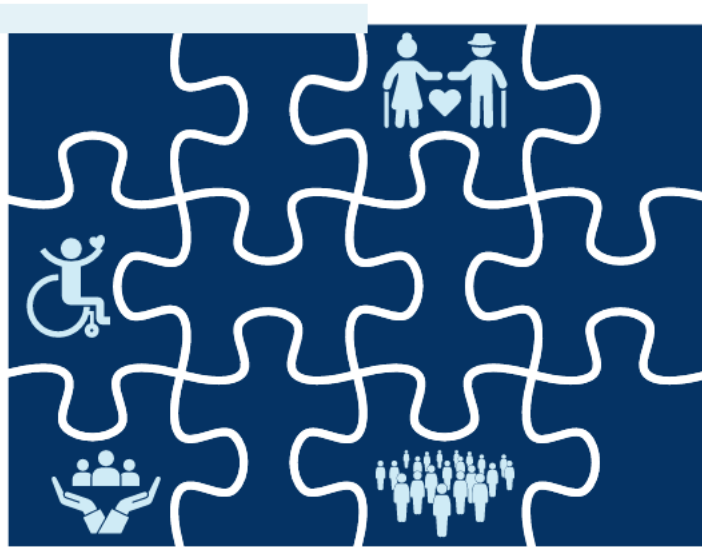
- Who's in the room today? (Name, facility/organization, role/job title)
- Please take a moment to mute yourself to prevent any background noise during today's presentation.
- We encourage questions and open discussion!
- Please utilize the Chat box to type in your questions or comments throughout today's event. Staff will be monitoring the chat throughout the event.
- Thank you, in advance, for participating in the polling questions. Your responses are just seen by us and used to help us plan useful content that meets your interests and needs.

NE Health Equity Toolkit (SDOH)

NHA | NEBRASKA
HOSPITALS

HEALTH EQUITY TOOLKIT

Driving Equitable Care in Nebraska Hospitals



The trusted voice and influential advocate
of health care in Nebraska

View Previous Meeting Recordings and Slides:

<https://hhs.iowa.gov/public-health/rural-health/rural-hospital-programs>

***All participants will be mailed a Health Equity Toolkit**

Overview of Presentation



Discuss the issues of interpersonal safety and strategies to address it



Discuss the problem of paying for utility needs and strategies to address it



Build a business case to support these actions

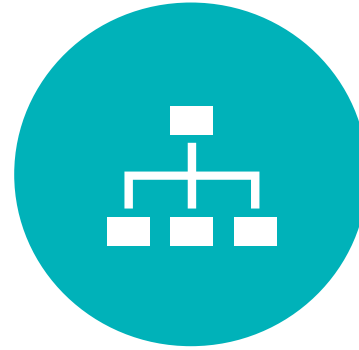


Conclusion

Overarching Goals of the Program



Providing a framework for building health equity capacity



Identify the major components of this framework, including the SDOH



Discuss strategies for addressing the SDOH



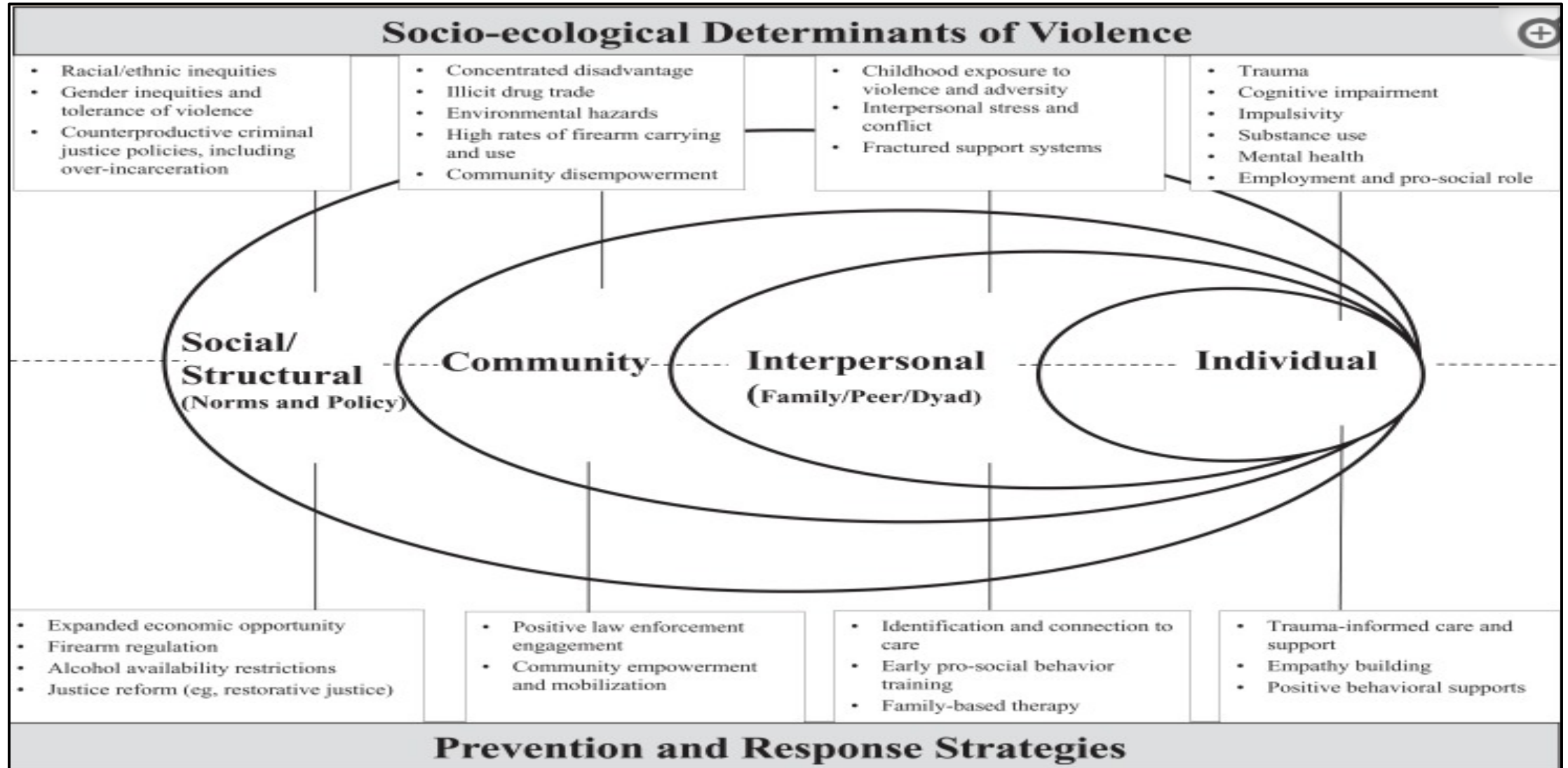
Provide interactive sessions where information is shared

Screening Questions Related to Interpersonal Safety

- Does anyone, including family and friends, physically hurt you?
- Does anyone, including family and friends, insult or talk down to you?
- Does anyone, including family and friends, threaten you with harm?
- Does anyone, including family and friends, scream or curse at you?



A socio-ecological framework for determinants of violence and strategies for prevention and response



Intimate Partner Violence Prevention
Resource for Action

A Compilation of the Best Available Evidence

Centers for Disease Control and Prevention
National Center for Injury Prevention and Control

Preventing IPV	
Strategy	Approach
Teach safe and healthy relationship skills	<ul style="list-style-type: none"> • Social-emotional learning programs for youth • Healthy relationship programs for couples
Engage influential adults and peers	<ul style="list-style-type: none"> • Men and boys as allies in prevention • Bystander empowerment and education • Family-based programs
Disrupt the developmental pathways toward partner violence	<ul style="list-style-type: none"> • Early childhood home visitation • Preschool enrichment with family engagement • Parenting skill and family relationship programs • Treatment for at-risk children, youth and families
Create protective environments	<ul style="list-style-type: none"> • Improve school climate and safety • Improve organizational policies and workplace climate • Modify the physical and social environments of neighborhoods
Strengthen economic supports for families	<ul style="list-style-type: none"> • Strengthen household financial security • Strengthen work-family supports
Support survivors to increase safety and lessen harms	<ul style="list-style-type: none"> • Victim-centered services • Housing programs • First responder and civil legal protections • Patient-centered approaches • Treatment and support for survivors of IPV, including TDV

Preventing IPV Strategies and Approaches

Teach safe and healthy relationship skills

- Social-emotional learning programs for youth
- Healthy relationship programs for couples

Engage influential adults and peers

- Men and boys as allies in prevention
- Bystander empowerment and education
- Family-based programs



Preventing IPV Strategies and Approaches

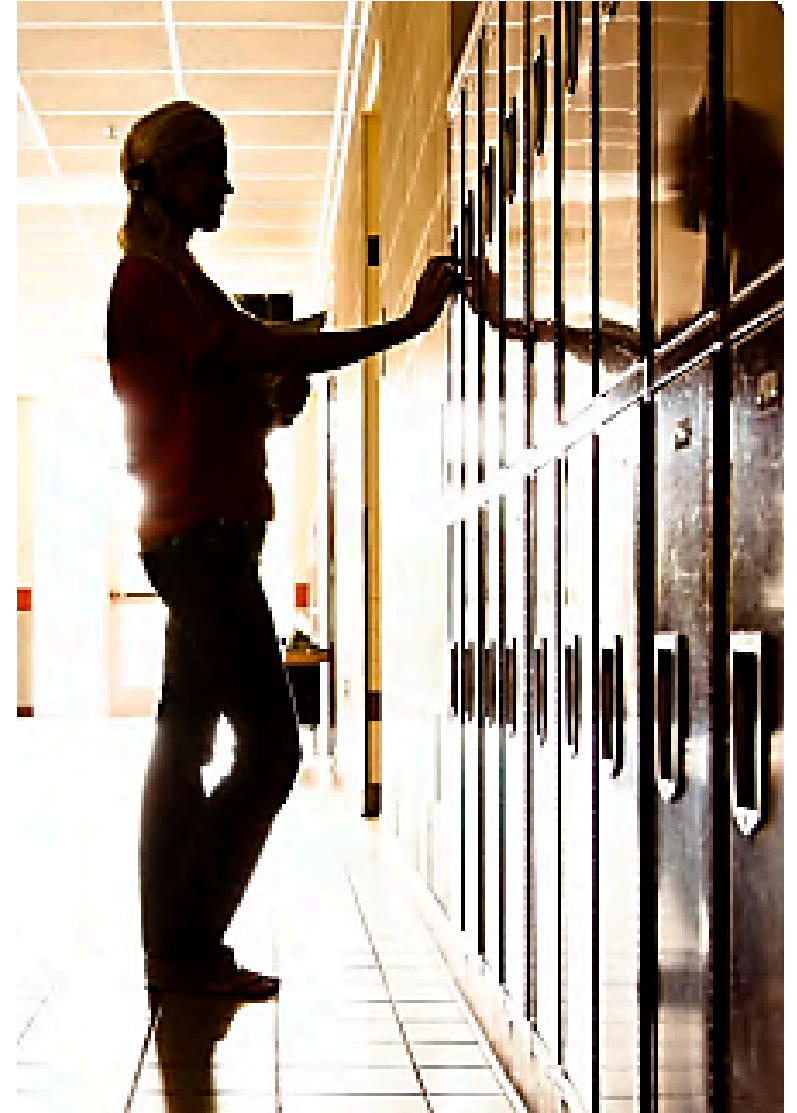
(continued)

Disrupt the developmental pathways toward partner violence

- Early childhood home visitation
- Preschool enrichment with family engagement
- Parenting skill and family relationship programs
- Treatment for at-risk children, youth and families

Create protective environments

- Improve school climate and safety
- Improve organizational policies and workplace climate
- Modify the physical and social environments of neighborhoods



Preventing IPV Strategies and Approaches (continued)

Strengthen economic supports for families

- Strengthen household financial security
- Strengthen work-family supports

Support survivors to increase safety and lessen harms

- Victim-centered services
- Housing programs
- First responder and civil legal protections
- Patient-centered approaches
- Treatment and support for survivors of IPV, including TDV



Potential Strategies and Action Steps

- Partner with local/regional domestic violence organizations
- Provide training to all employees who interact with patients on how to identify safety issues
- Identify and partner with various organizations that can provide support and referral pathways



The Role of Providers in Addressing Interpersonal Violence and Abuse



Often leads to physical injuries and mental distress, so providers need to identify and validate these problems

Must assess future risk and decide the most suitable pathway to safety

Mandatory reporting for certain conditions

Important to collaborate with a wide array of partners to meet each patient's needs (e.g., domestic violence agencies, police, and housing agencies)

Polling Questions

Interpersonal Safety

Discussion Question

- Would anyone be willing to share a story about partnerships they've developed to address interpersonal safety issues?

Screening for Utility Needs

- In the past 12 months, has the electric, gas, oil, or water company threatened to shut off services in your home?
- Do you have trouble paying your gas or electric bills?

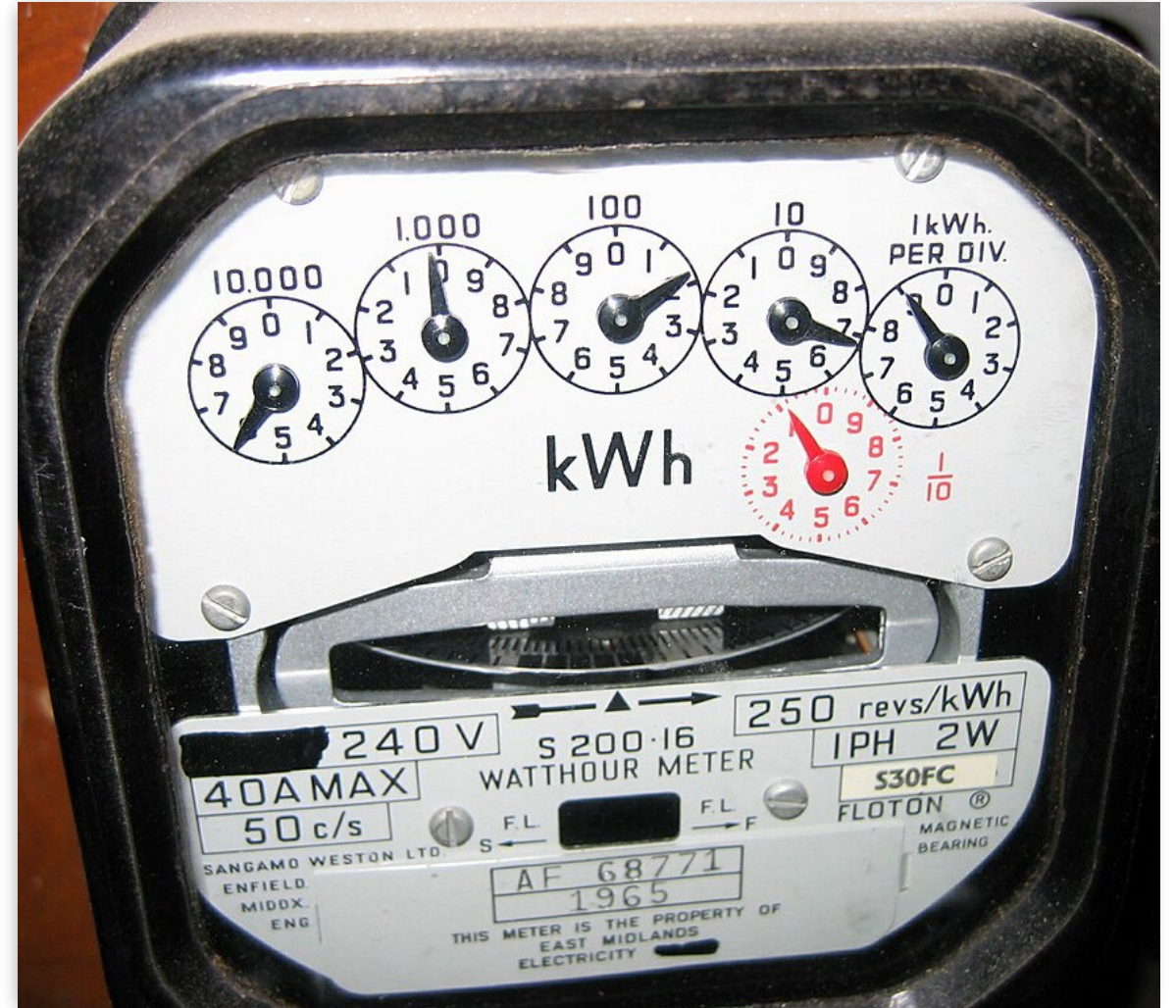
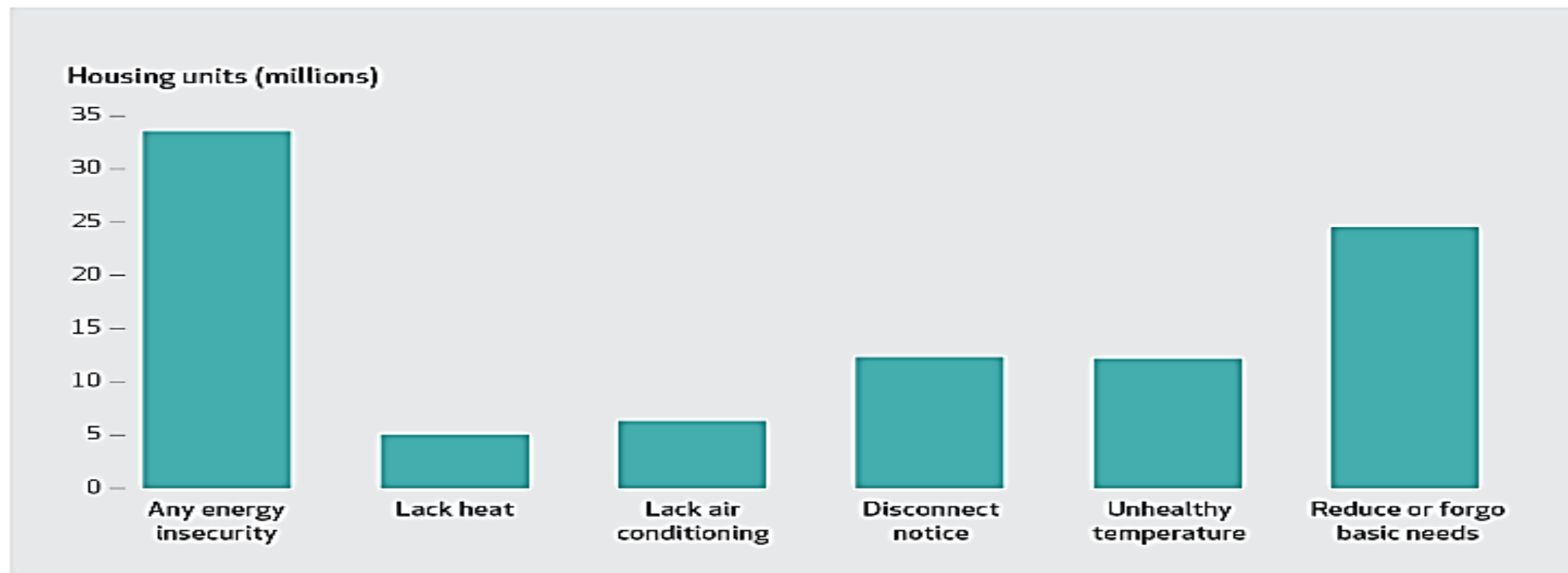
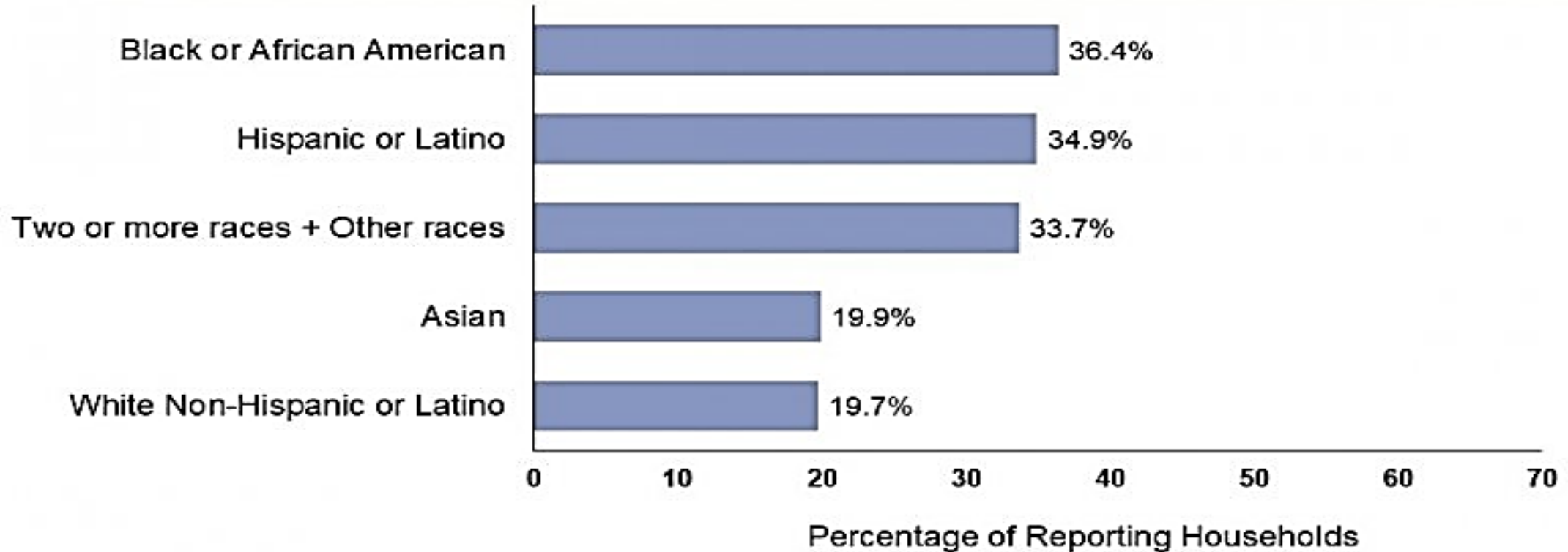


EXHIBIT 1 US energy insecurity indicators in the Residential Energy Consumption Survey, 2020



Source: Author's analysis of the *Residential Energy Consumption Survey*, table HC11.1, household energy insecurity, 2020.

Average Shares of U.S. Households Experiencing Energy Insecurity by Race, July 2021 - May 2023



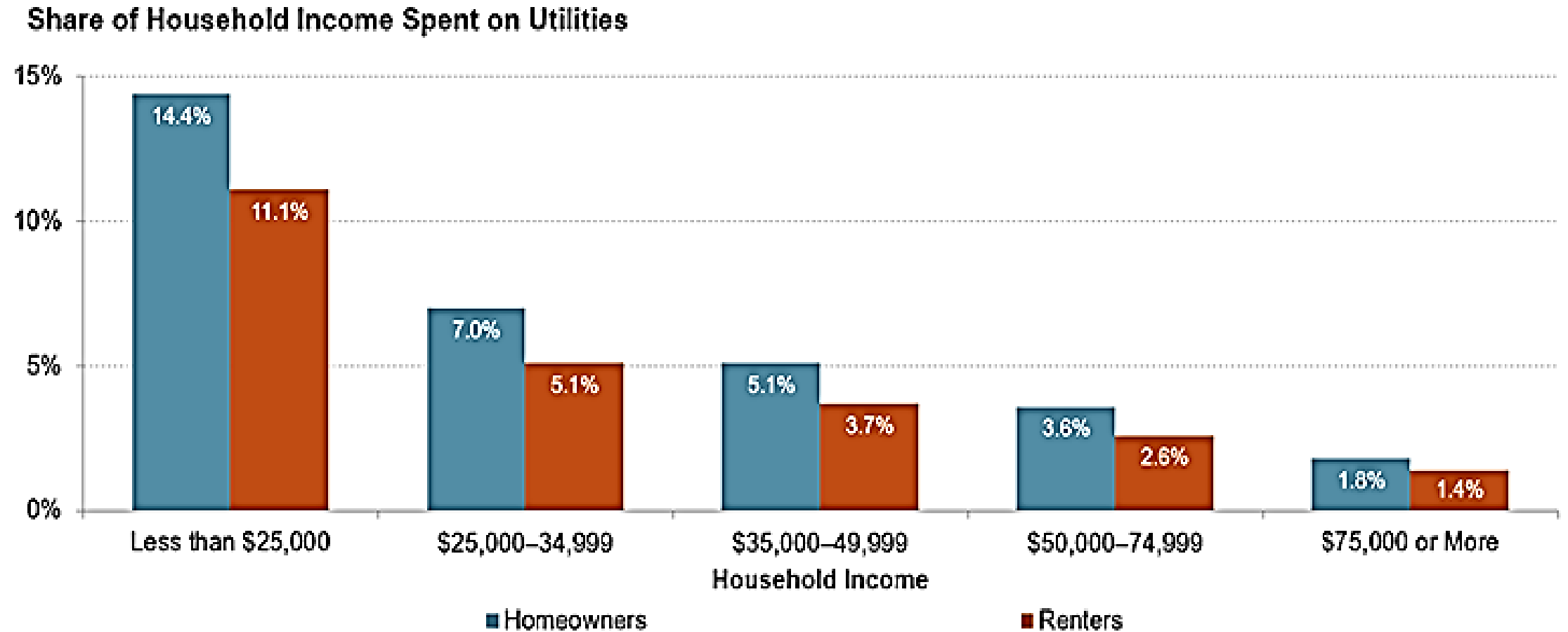
<https://www.census.gov/programs-surveys/household-pulse-survey/data.html>



*The Household Pulse Survey dataset is an experimental product, and as such, it does not meet all of the U.S. Census Bureau's data publication standards. As noted in the U.S. Census Bureau's technical documentation and nonresponse bias report, the Household Survey Pulse data are subject to nonresponse bias and non-sampling errors.

<https://www.energy.gov/justice/articles/households-color-continue-experience-energy-insecurity-disproportionately-higher>

FIGURE 2. ENERGY BURDENS WERE PARTICULARLY HIGH FOR LOWER-INCOME HOMEOWNERS IN 2021

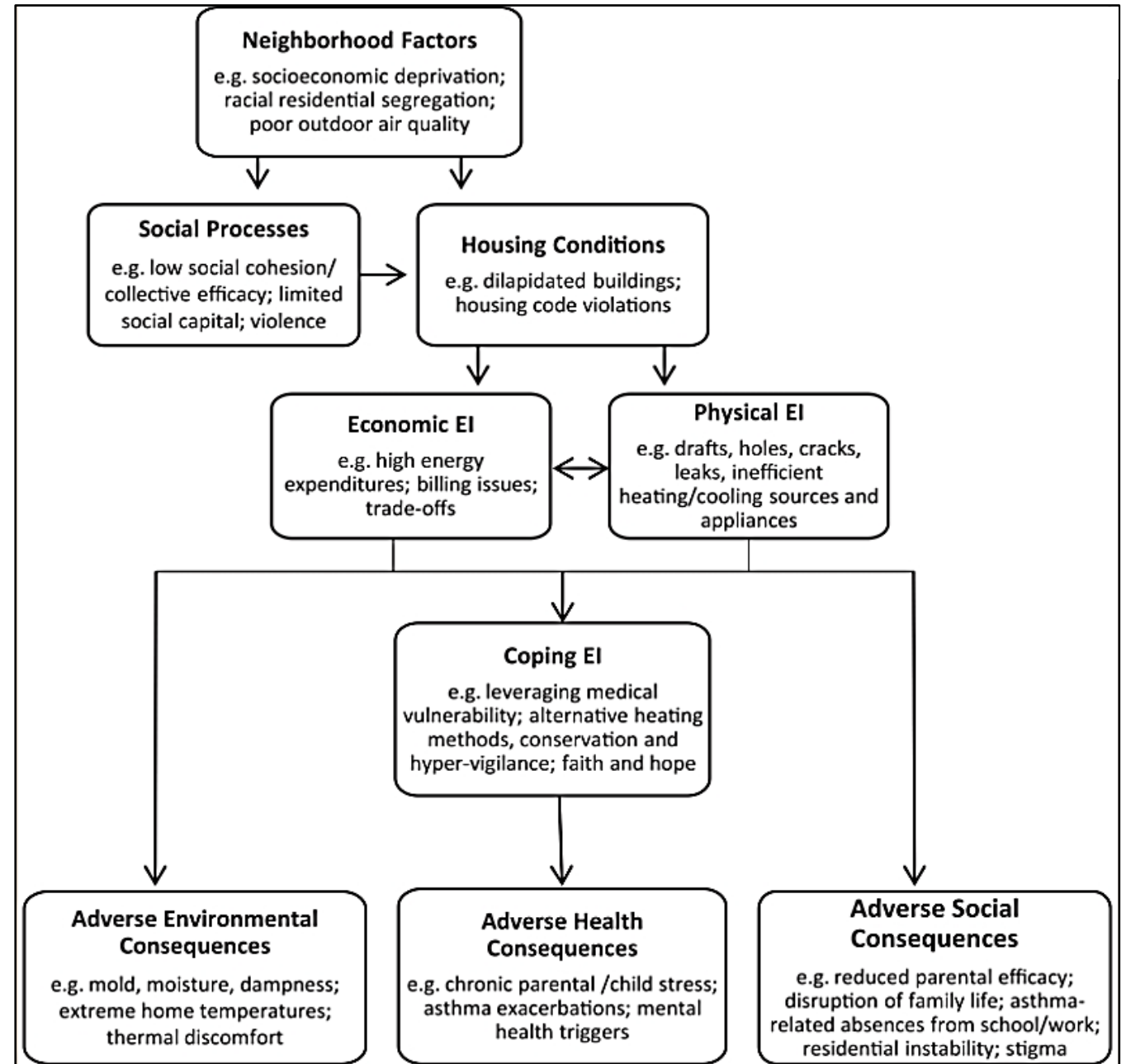


<https://www.jchs.harvard.edu/blog/energy-insecurity-threatens-destabilize-households-winter>

Coping Energy Insecurity

- People facing energy insecurity rely on adaptive strategies to manage inadequate and inefficient housing conditions and economic hardship. Energy-insecure households may use supplemental and potentially hazardous heating alternatives such as stoves, ovens, and space heaters when a primary source is unavailable or lacks sufficient capacity.
- Coping also alludes to the trade-offs that households make, such as foregoing food or medicine or enduring extreme temperatures by not running an air conditioning unit because of cost concerns. Low-income households are more likely than their higher-income counterparts to engage in [energy-limiting behavior](#) to contain costs at the expense of comfort and health.
- Coping with energy insecurity represents a way to both prevent and respond to physical and economic hardship.

Energy insecurity: a pathway to disease and disadvantage



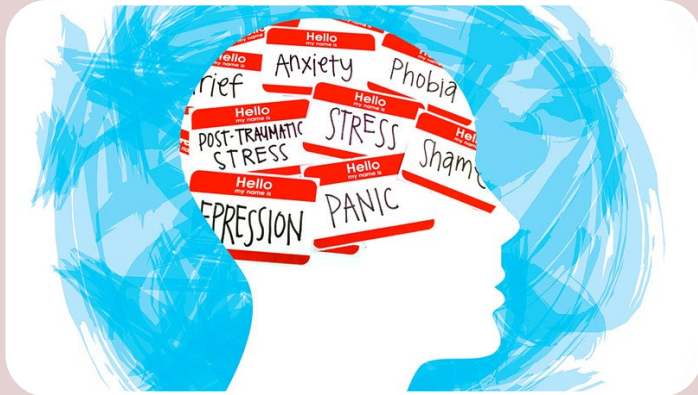
Potential Strategies and Action Steps

Connect patients with local support systems such as:

- Low-income Home Energy Assistance Program
- Low-income water assistance program
- <https://www.newopp.org/services/outreach/utility-crisis-assistance>
- <https://www.hud.gov/states/iowa/renting/energyprgms>
- <https://www.impactcap.org/utility-assistance>
- <https://hhs.iowa.gov/programs/programs-and-services/liheap#:~:text=About%20LIHEAP,is%20a%20federally%2Dfunded%20program>



Impact on Health



Strong link between energy insecurity and adverse outcomes in mental health, respiratory health, and child health development

Greatest impact during summer and winter months when it is very hot or cold

About 20% of households in the U.S. are late paying utility bills or not making the payment at all

Discussion Question

- Would anyone be willing to share a story about partnerships they've developed to address utility needs?

Building a Business Case



Unnecessary costs due to missed appointments, unnecessary hospital admissions and ER visits, and unfilled prescriptions



Many have inadequate health insurance coverage or Medicaid coverage which does not cover your costs



Lower productivity from workers in the community



Reimbursement is available through Z codes

Priority SDOH Polling



David Palm, PhD

Associate Professor

**Department of Health Services
Research and Administration**

College of Public Health

Phone: 402.770.3605

Email: david.palm@unmc.edu

THANK YOU!

Flex CAH Population Health SDOH Cohort

Questions or Assistance: Reach out to Wanda Hilton, Flex Program Coordinator (wanda.hilton@hhs.iowa.gov or 515-322-9708).

Flex MBQIP SDOH Cohort: Launching Fall, 2024! Please let Wanda Hilton know if your CAH would be interested in participating.