

Iowa Hope and Opportunity in Many Environments (HOME)

STEERING COMMITTEE MEETING

August 27, 2024



Health and
Human Services

Agenda

- ▶ Waiver structure update
- ▶ Transition from SIS to interRAI
- ▶ Social media campaign overview
- ▶ Next steps

Waiver Structure Update

Proposed Waiver Structure Update

Change waiver structure

- Remove six diagnosis-based waivers
- Add two age-based waivers

Keep the current Elderly Waiver for members age 65+ who are not otherwise disabled

- Members on the Adult and Aging Waiver who have a disability will stay on that waiver after age 65
- Services in the Elderly Waiver will not change at this time
 - May change over time to include services that delay or divert institutional care

Benefits of Keeping the Elderly Waiver

- Allows Iowans age 65+ to maintain eligibility without disruption in access to Medicaid State Plan or Home and Community-Based Services (HCBS)
- Relieves administrative burden by continuing eligibility operations, policies, and procedures for the existing Elderly Waiver
- Allows the Aging waiver to fully meet the needs of the 65+ population
- Prevents the institutionalization of people 65+ who would otherwise benefit from a combination of HCBS and Medicaid State Plan services

Questions on the waiver structure?

Transition from SIS to interRAI

Transition Background

- ▶ Currently, the Intellectual Disability (ID) waiver uses:
 - Supports Intensity Scale- Adults (SIS-A) to assess adults 16 and older
 - Supports Intensity Scale- Children (SIS-C) for children ages 5-15
- ▶ The SIS 1.0 version will be retired December 31, 2024
 - Iowa HHS will no longer have the rights to use these assessments.
 - Iowa had the option to transition to SIS 2.0 or another assessment.
- ▶ Long-term plan to transition waivers to the interRAI suite of tools
- ▶ January 1, 2025, Iowa HHS will transition to using:
 - interRAI-Intellectual Disability (interRAI-ID) for adults
 - interRAI-Child and Youth Mental Health-Developmental Disability (ChYMH-DD) assessment for children

Need for Parallel Assessment

- ▶ To amend the ID waiver, there is a need to ensure that individuals are assigned to the same acuity tier based on the interRAI assessment that they would have been assigned if assessed using SIS.
- ▶ To do this, we needed to compare individuals' SIS and interRAI responses and develop a methodology that yields the same tiers.

Parallel Assessment Process

- ▶ To minimize impact on waiver members, the parallel assessment was limited to those whose off-year assessment (OYA) completed in April or May 2024 and showed **no change** from their last full SIS assessment.
 - Because their OYA shows no change, we could use their last SIS results in the comparison without asking individuals to complete two lengthy assessments.
- ▶ We contacted eligible members in June 2024 to ask them to complete the optional assessment.
- ▶ To increase participation, we offered \$10 gift cards.

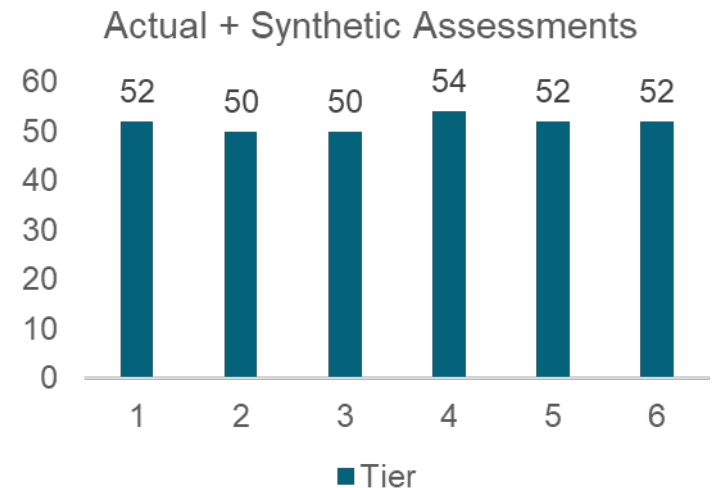
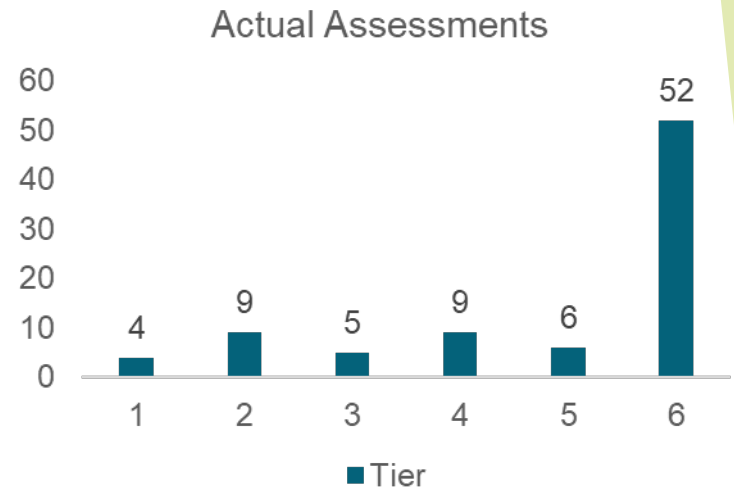
Data Available for Analysis

- ▶ We received 90 completed interRAI-ID assessments and 13 ChYMH-DD assessments.
- ▶ However, we only had SIS responses available for 85 of the adults and 3 of the children.
- ▶ Only adult responses were used to develop the tiering process due to the low number of child responses.
 - We used questions in both interRAI-ID and ChYMH-DD so our method could apply to both adult and child populations.

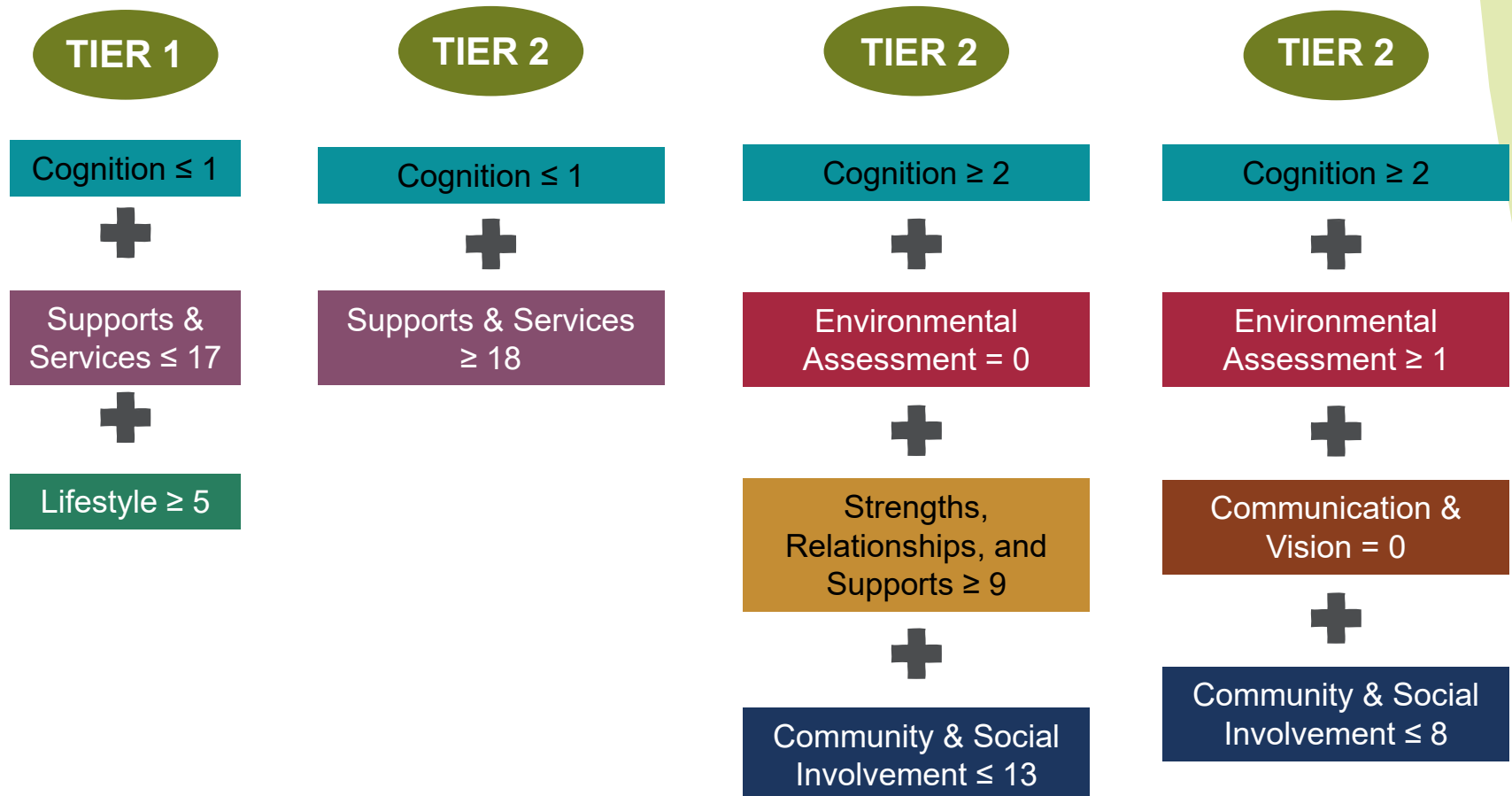
Data Available for Analysis

(cont)

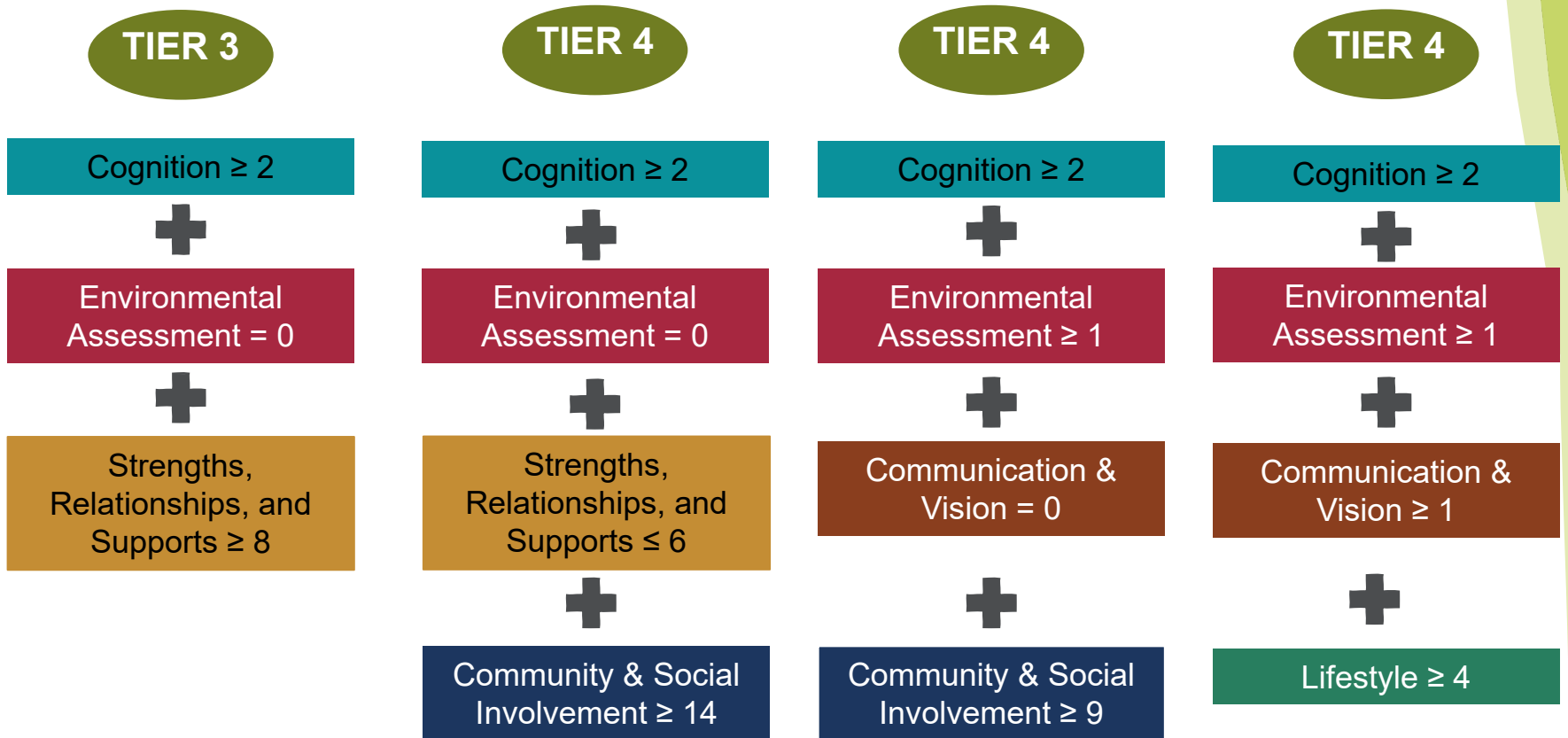
- ▶ Most parallel assessment members were in tier 6 based on their most recent SIS assessment. This did not yield enough data in tiers 1-5 to tell the difference between tiers.
- ▶ We generated assessment data that is similar to real responses to have more data to help tell the difference between tiers.



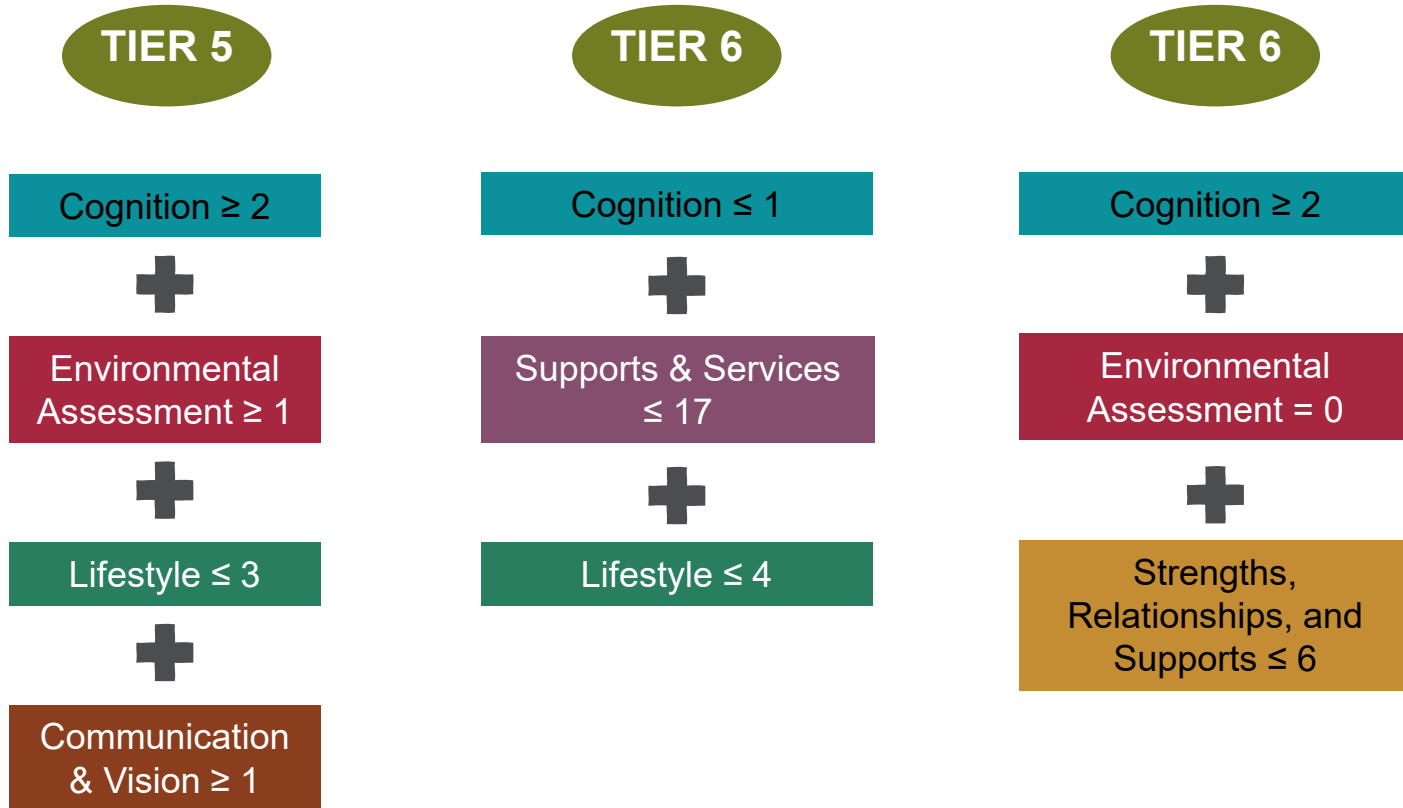
Final Decision Tree – Tiers 1 and 2



Final Decision Tree – Tiers 3 and 4



Final Decision Tree – Tiers 5 and 6



Testing Results

- ▶ The accuracy was 80%, meaning 80% of the time the interRAI tier was the same as the SIS tier.
- ▶ We are comfortable with this level of accuracy.
- ▶ We can update the process with assessment data collected in 2025 to improve overall accuracy.

Assessment Next Steps

- ▶ The ID waiver amendment to change from the SIS to interRAI assessments will require a public comment period, which will be open from August 8 to September 7.
 - <https://hhs.iowa.gov/public-notice/2024-08-08/public-notice-public-comment-period-amendments-1915-c>
- ▶ Iowa HHS will use the interRAI-ID and ChYMH-DD assessments beginning January 1, 2025.
- ▶ Managed Care Organizations (MCOs) and Telligen will train assessors on the interRAI assessments.

Social Media Campaign Overview

Social Media Campaign Goals



Iowa HHS ran a social media campaign to create awareness about the HOME Frequently Asked Questions (FAQs) and to combat misinformation.

The campaign ran on Facebook between June 20 and July 17.

Campaign Recap

The campaign resulted in the following:

- ▶ **654,707** impressions (number of times an ad is loaded on a user's page)
- ▶ **838** engagements (any action on the ad)
- ▶ **668** clicks
- ▶ **6** post saves
- ▶ **15** post shares



Why is the HHS making changes to waivers and services?

To improve timeliness, efficiency and to align with lowans needs.



The image shows a graphic with a white rounded rectangle containing text. Above the rectangle is the Iowa Medicaid logo. Below the rectangle is a dark teal circle with a white question mark. The background is light gray with green accents at the top and bottom.

Questions?



Health and
Human Services

Next Steps

- ▶ Meetings will be held on the last Tuesday of every month
 - Next meeting is Tuesday, September 24
- ▶ We will share slides usually the morning of the meeting
- ▶ We will send the August meeting summary in about two weeks