



Supporting Youth in Crisis

Kelly Garcia

Director, Health and Human
Services

Cory Turner

Division Director, State-Operated
Specialty Care



Background and Data


- The number of people with behavioral health conditions has almost doubled in the past 3 years.
 - Before the pandemic, about 20% of the population experienced these conditions. Today, these numbers have doubled to approximately 40%.
- Children enter the system in a variety of ways and the system has not kept pace with the increased need or type of need.

The National Foster Care Placement Crisis: Why Are Kids Sleeping in Offices? [VIDEO]

September 9, 2024

Kansas

28
Shares

 Share

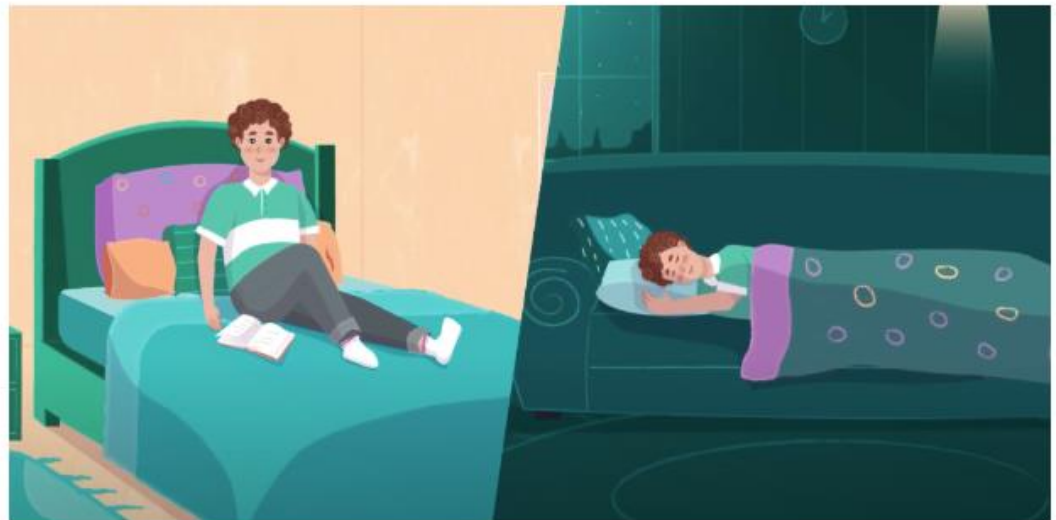
 Tweet

 Share









New Mexico


☀️ 32° | E-EDITION | APP | ARCHIVE | ADVERTISE | PRINT | CALENDAR | NEWS TIPS | CONTACT | HELP

SANTA FE NEW MEXICAN

[🏠](#) [NEWS](#) [SPORTS](#) [OPINION](#) [PASATIEMPO](#) [OBITUARIES](#) [MULTIMEDIA](#) [LIFE](#) [CLASSIFIEDS](#) [REAL ESTATE](#) [JOBS](#) [LEGALS](#) [USER INFO](#) [SPONSORED](#)

SEARCHLIGHT INVESTIGATION

Foster kids living in CYFD offices report threats, restraint, assault

By Ed Williams Searchlight New Mexico Dec 25, 2024 Updated Dec 26, 2024  2

SWAT Team

Specialized Youth Behavioral Health Review
Committee

SWAT

Address the growing number of situations in which appropriate placement cannot be attained for individuals in this state in an effort to clear barriers and better serve Iowans.

- ▶ Facilitate urgent placement for individuals in Iowa
- ▶ Reduce long stays in emergency rooms
- ▶ Reduce long stays in shelter
- ▶ Timely hospital discharges to community services
- ▶ Reduced discharges to shelter or homelessness
- ▶ Reduced hospital readmissions

SWAT Team

Case Criteria

- ▶ Individuals with need for urgent placement
- ▶ Examples
 - Stuck in a hospital or MHI with no safe discharge plan
 - Children who are in shelter care or facing shelter placement
 - Individuals facing imminent discharge from current provider
 - Individuals currently placed out-of-state and looking to come back to Iowa

Team

- ▶ Administrators from multiple HHS divisions
- ▶ Hospital executives
- ▶ Managed Care Organization (MCO) leadership
- ▶ Community provider agency executives
- ▶ Behavioral health region leadership
- ▶ Professional association (IHA, IACP) leadership

Profile 1

Profile 2

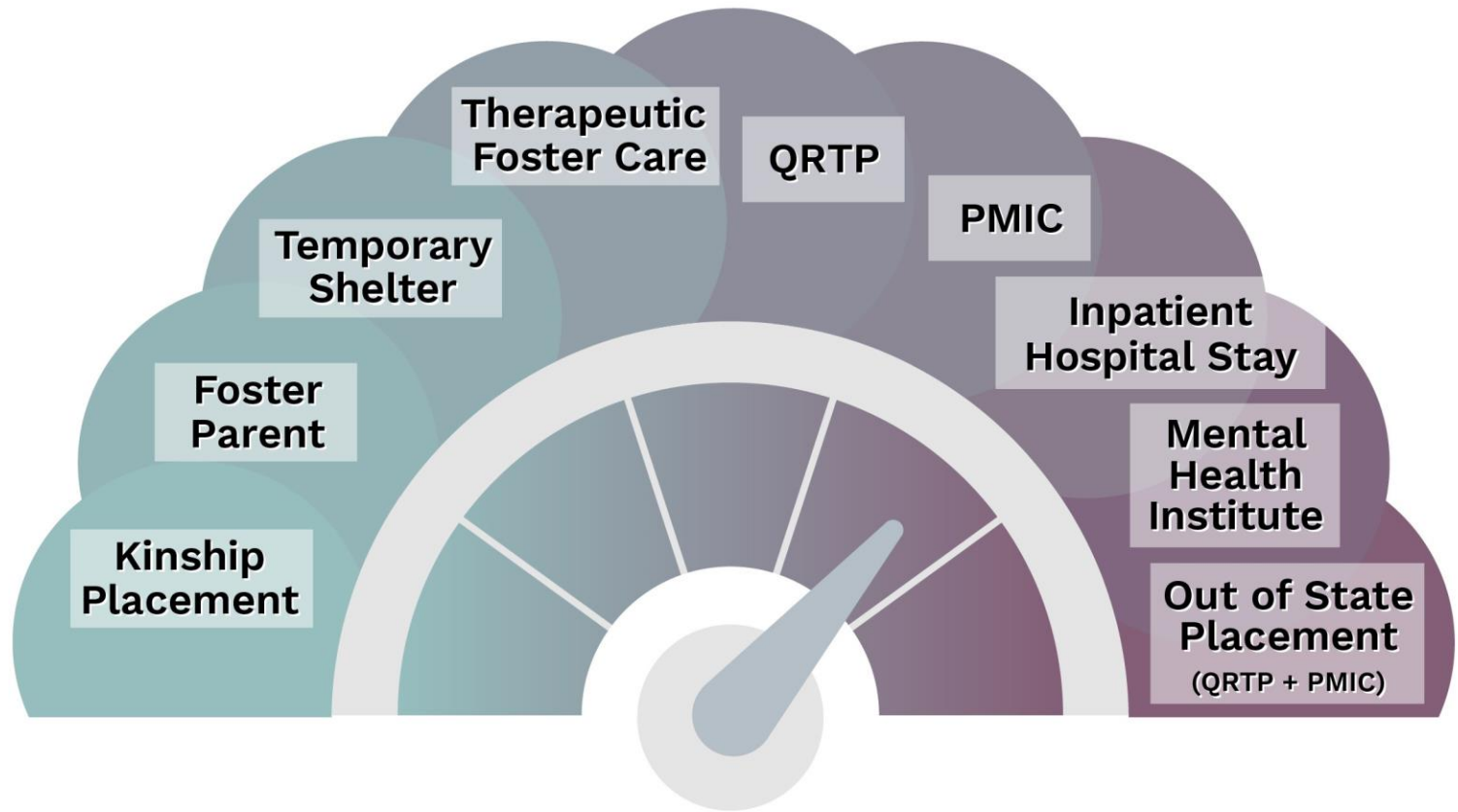
Profile 3



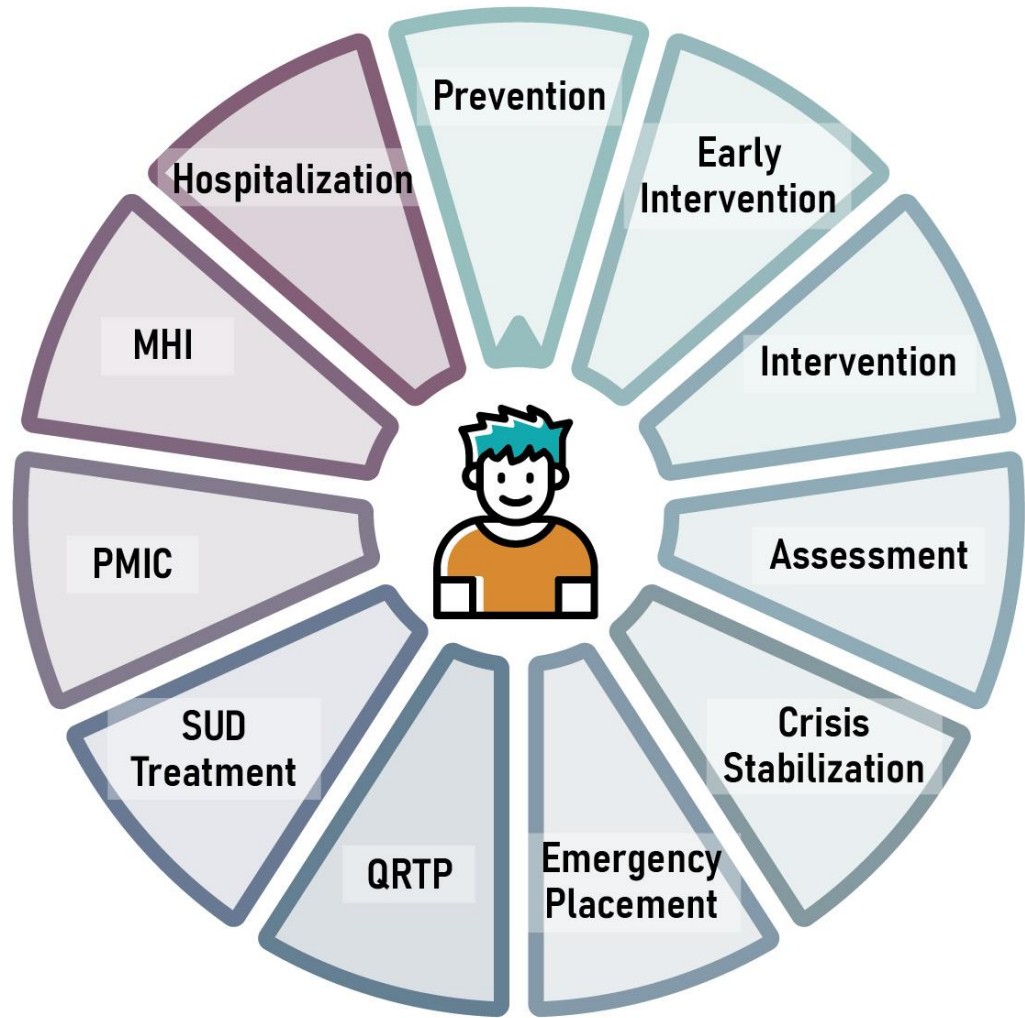
Connecting Care

- ▶ Stabilize current provider capacity while infusing quality standards.
- ▶ Revise Iowa Code to remove duplicative or burdensome licensing requirements for child serving agencies.

Current State



Future State



Proposed Legislative Solutions

1 Residential assessment, evaluation and treatment for youth

2 Home and Community-Based Services (HCBS) waiver and other Medicaid program services for certain youth—exemption from children’s residential facility certification

3 Juvenile Court Services (JCS) administration and supervision

4 HAWK-I changes for incarcerated youth

Division 1: Residential Assessment, Evaluation and Treatment for Youth

Safety and Security

- ▶ Clarify in Iowa code which child serving agencies can be secure and what level of security is allowed
- ▶ Designate authority to use existing dollars for additional enhancements
- ▶ Focus on structural improvements and public private partnerships

30-Day Evaluations

- ▶ Create a new pathway for 30-day evaluations
- ▶ Court-ordered services for child welfare involved youth initiated by HHS
- ▶ Assessments can take place at the State Training School (STS) for boys or Iowa's Mental Health Institutes (MHIs)
- ▶ Ensure youth are placed in the proper level of care

Quality Enhancements - For Example

Qualified Residential Treatment Program (QRTP)

Current Daily Rate



\$267

Proposed Daily Rate



\$303

Current State Yearly Rate



\$31,767,083

Proposed State Yearly Rate



\$35,012,677

Yearly State Rate
Increase

\$3,245,594

Division 2: Home and Community-Based Services (HCBS) waiver and other Medicaid program services for certain youth—exemption from children’s residential facility certification



Youth who are in imminent need of HCBS SCL services are seeing a delay in the initiation of these services



Exempt the certification requirements for programs providing Supported Community Living (SCL) services



Reduce administrative burden

Division 3: Juvenile Court Services Administration and Supervision

- Chief JCO
 - Encourage consistency across JCS services
 - Admission criteria
 - Reporting structure
 - Support the safety of youth, staff and Iowa's communities



Division 4: HAWK-I Changes for Incarcerated Youth

Iowa currently terminates coverage for HAWK-I covered youth upon incarceration as instructed by federal regulation

January 1, 2025, states are now required to suspend coverage for HAWK-I youth upon incarceration

Must match federal guidance and language

Amend code to remove the restriction that ends HAWK-I coverage for minor inmates and add a provision to mirror the process used for Medicaid youth

Outcomes of a Specialized Care Continuum



- ▶ Decrease prolonged stays in out-of-home placements
- ▶ Bring Iowa kids home from out-of-state placements
- ▶ Improve training, culture, clinical experience in all congregate settings
- ▶ Implement a safe, therapeutic environment for youth, staff and Iowa's communities

A photograph of a man with a beard and a young man in a cap embracing outdoors. The man is wearing a blue hoodie and has his arm around the young man's shoulder. The young man is wearing an orange hoodie and a dark cap. They are both smiling and looking down. The background is a blurred natural setting.

Questions?

Nick Crawford

Legislative Liaison

Nicholas.Crawford@hhs.iowa.gov



Health and
Human Services