

Provider Prevention and Support Services (PPSS)

FEBRUARY 2025

Tiffany Liska, PPSS Program
Director



Our Purpose

- ▶ To provide support to system members providing care to individuals with intellectual disabilities, co-occurring mental health diagnoses, and complex behavioral health needs.
 - Unique service
 - Preventative Interventions
 - Aid in Managing Crises
 - Positive Psychology
 - Provide Training
 - Tied to National Resources

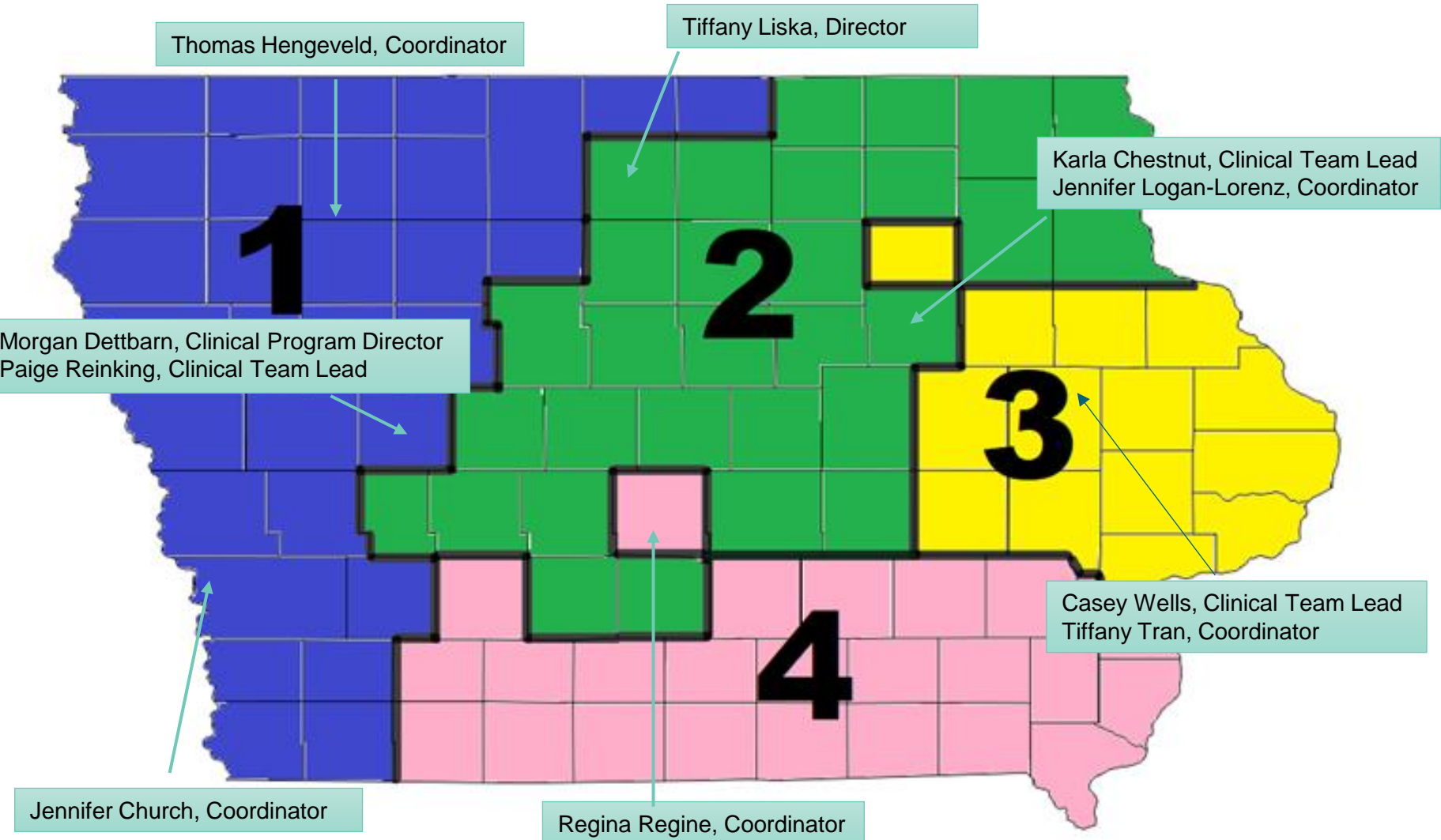


Our Referral Requirements

Eligibility Requirements:

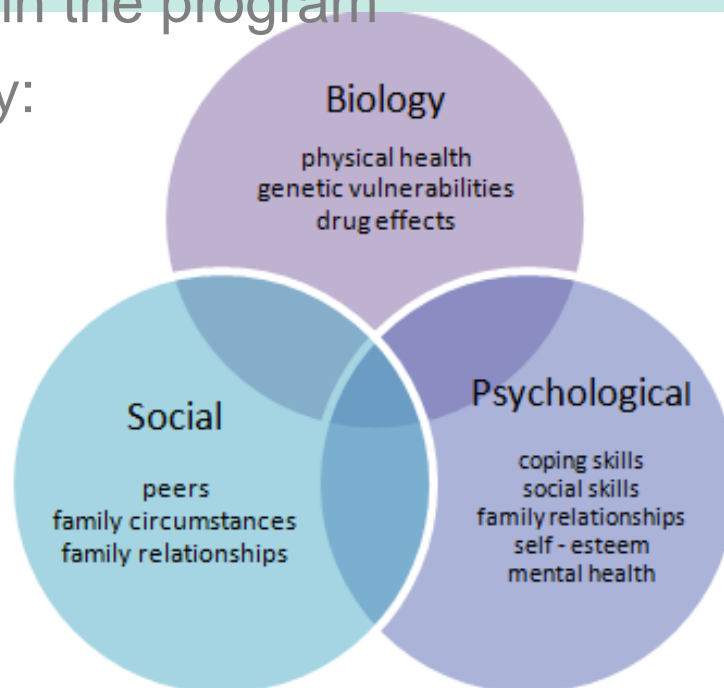
- Intellectual Disability
- Enrolled and Receiving ID Waiver or Habilitation Funding
- Documented behavioral health challenges
- Members between the ages of 6-17, must live in a residential-based supported community living setting.





Unique Service

- ▶ Primary Focus is on the system of support
- ▶ Specialized team
- ▶ Quarterly review of all cases within the program
- ▶ Consultation services provided by:
 - University of Iowa
 - Station MD
- ▶ Person Centered Care approach
- ▶ Everyone is part of the team
- ▶ Intentional approach to services



Preventative Interventions

- ▶ We meet frequently!
- ▶ Open lines of communication
- ▶ Identify missing members of the team
- ▶ Try, try, and try again, until we all get it right!
- ▶ Move from a reactive to a proactive approach to services
- ▶ Dedication and participation from everyone

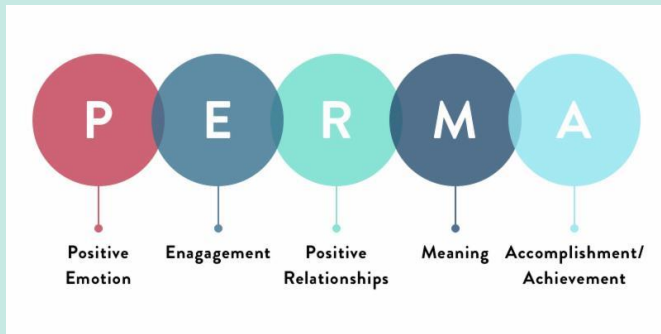


Aid in Managing Crises

- ▶ Proactive Planning Helps to Prevent Crisis
 - Our**YOUR** Crisis Plans
- ▶ Crisis Supports
 - Prior to crisis occurring
 - Active planning for crisis
 - While a crisis is happening
 - Access to our support line and resources
 - After the crisis happens
 - Crisis follow-up
- ▶ Training



Positive Psychology

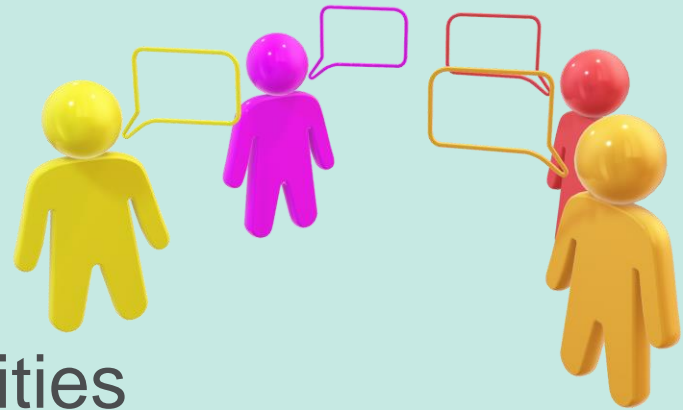


- ▶ We want **EVERYONE** living a +1 lifestyle
- ▶ Focus on burnout, turnover, limited resources
- ▶ Create an empathetic view
- ▶ Identify areas of happiness
- ▶ Person center approach
 - Strengths of the member served
 - Desire/Goals the member has
 - Promote overall positivity



Provide Training

- ▶ **FREE** Training
- ▶ Customized training to meet your needs and/or the needs of the member
- ▶ Individualized training
 - Small or large groups
 - One-on-one training
 - Multiple training
- ▶ Monthly training opportunities



National Resources

- ▶ The Center for START Services
 - Experts in the field of complex behavioral health needs for individuals with intellectual and developmental disabilities
- ▶ All members of the Provider Supports team are or will be Certified by the Center for START Services
- ▶ Consultation Services
- ▶ www.centerforstartservices.org



Make a Referral

- ▶ Email: ProviderSupports@elevateccbhc.org
- ▶ Website: www.elevateccbhc.org
- ▶ Phone: 641.525.0401



Eligibility Requirements:

- Intellectual Disability
- Enrolled and Receiving ID Waiver or Hab Funding
- Documented behavioral health challenges
- Members between the ages of 6-17, must live in a residential-based supported community living setting.

Any Program Related Questions:

► Contact:

- Tiffany Liska, MA Program Director
- E: tliska@elevateccbhc.org
- P: 319-464.0642

- Morgan Dettbarn, MSW Clinical Program Director
- E: mdettbarn@elevateccbhc.org
- P: 319-348-3668

