



# Building Solutions and Expanding the Early Childhood Continuum of Care

Iowa ranks fifth in the nation for 4-year-old preschool access, nearly doubling the national average with over two-thirds of Iowa's 4-year-olds enrolled in preschool. Despite the universal availability of preschool, barriers such as midday transportation and wrap around care before and after preschool prevent families from accessing early educational opportunities for their children.

To address this, a new \$16 million dollar "Continuum of Care" grant program will support partnerships between districts and child care centers to offer full day services. This will be funded by existing Early Childhood Iowa (ECI) funds and federal Child Care Development Funds (CCDF).

Statewide Voluntary Preschool Program (SWVPP) providers and child care providers can partner to apply for a grant worth up to \$100,000 per year, renewable for three-years. Providers may form multiple partnerships per year, with a maximum award of \$300,000 per year.



## Program Requirements

- Provide a full day of preschool and child care (SWVPP 10 hours per week)
- Identify eligible funding need(s)
- Preschool provider must be a SWVPP participant
- Child care center must be a T.E.A.C.H. and WAGE\$ participant
- Child care center must have a full license from HHS



## Eligible Use of Funds





- Transportation between partnering locations
- Funding direct care staff or teacher positions for the preschool or child care hours
- Up to 5% of a grant award may be used for administrative expenses

# Early Childhood Iowa (ECI) Proposed Plan

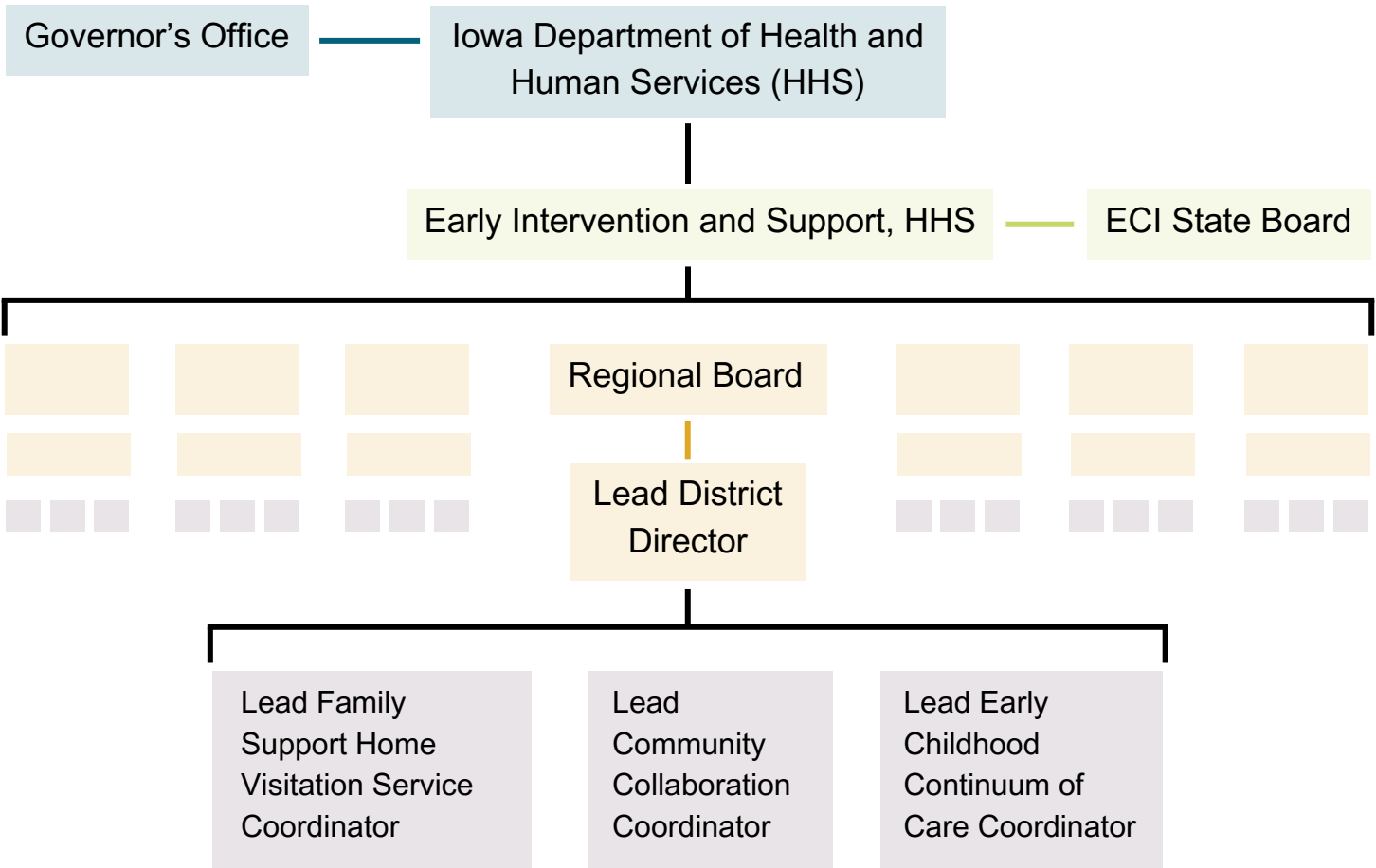
## To support the implementation of 7 new districts, ECI local district leadership will:

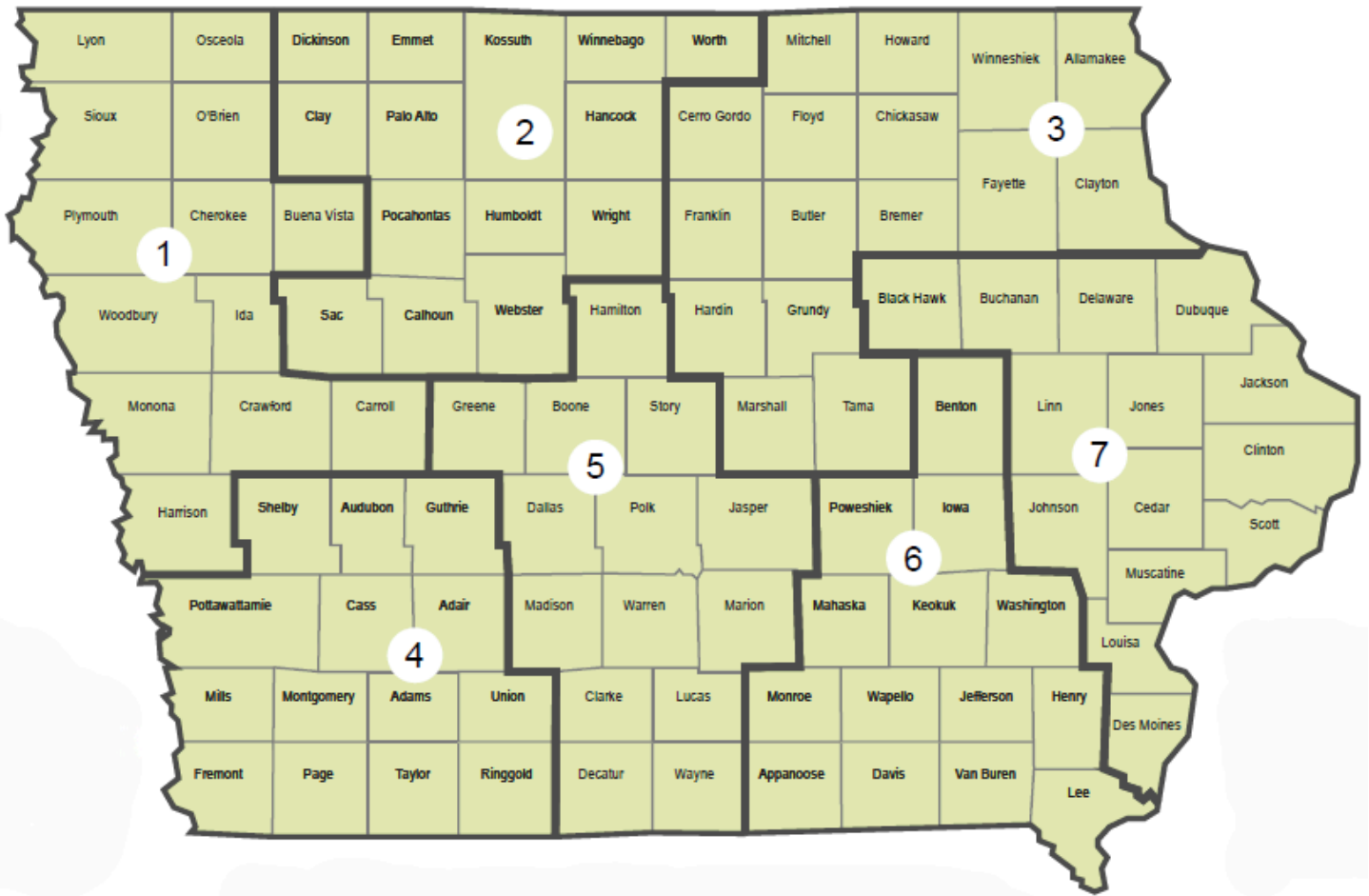
- Evaluate current contracts to prepare for the new districts to become responsible for those service delivery agreements.
- Develop recruitment strategies to form new district boards.
- Prioritize local investments and identify key partners to help transition the opportunities for families and scope of service delivery.
- Be prepared for overlap in local district funding streams.

## ECI Result Areas

-  Safe and Supportive Communities
-  Secure and Nurturing Families
-  Secure and Nurturing Early Learning Environments
-  Ready to Succeed in School
-  Healthy Children

## ECI Organizational Structure





## Board Representation

Each district will have a board that includes individuals representative of the following areas with every effort being made to achieve geographic balance.



Human Services



Elected Official



Domestic Violence  
Prevention or Intervention



At Large



Health



Faith



Education



Juvenile Court Services, Public  
safety or law enforcement



Business or Economic  
Support



Parent, grandparent or guardian  
of a child ages 0-5 years