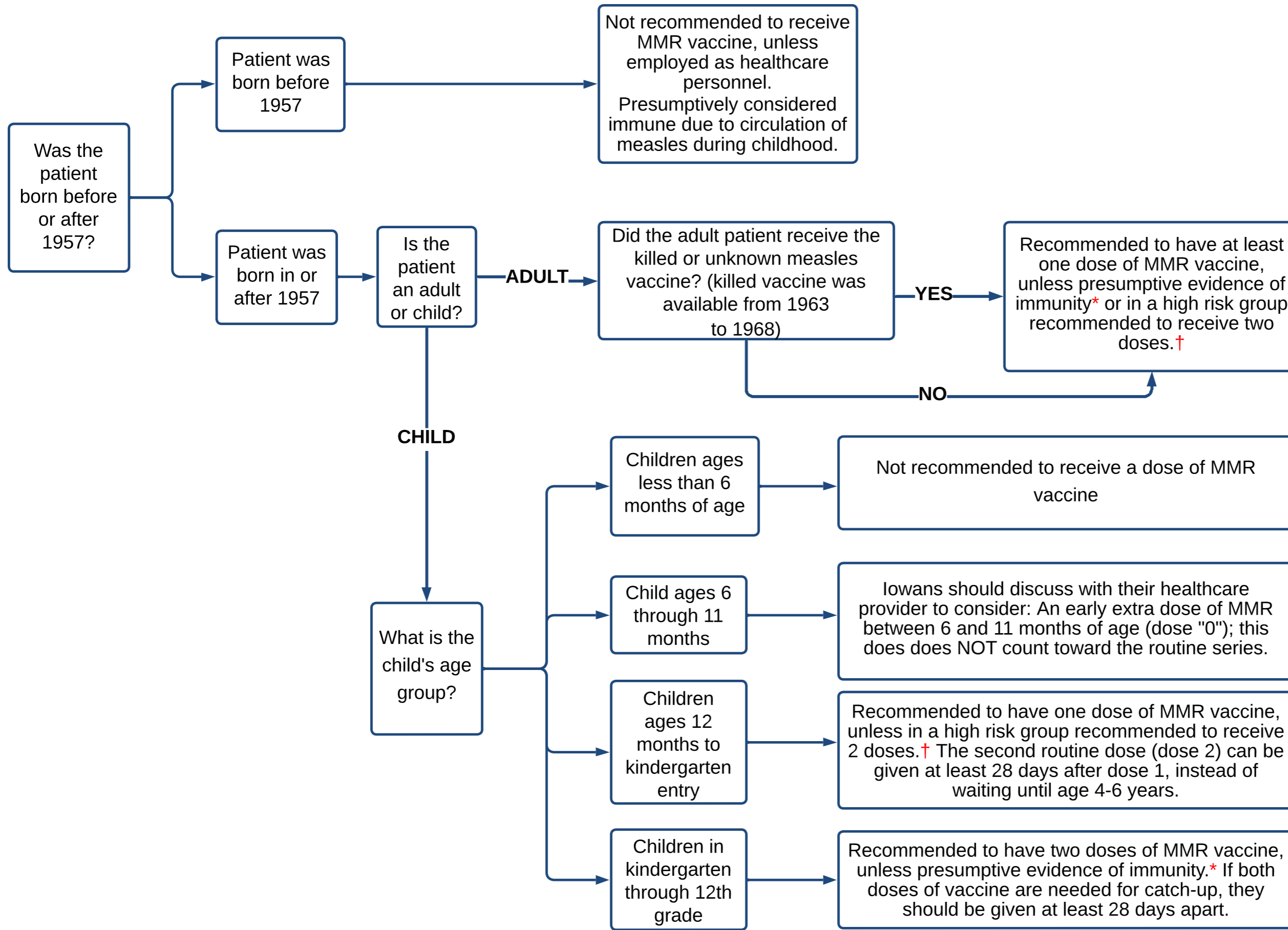


Measles Immunity and Vaccine Recommendations

July 2025



Note: Anyone born after 1957 should be able to produce documentation of two doses of a live-attenuated measles vaccine. Anyone without documentation of a measles vaccine who is in doubt about their vaccine status should receive at least one dose of MMR.

Contraindications to receiving MMR vaccine:

- Severe allergic reaction (e.g., anaphylaxis) after a previous dose or to vaccine component
- Have a weakened immune system due to disease (such as cancer or HIV/AIDS) or medical treatments (such as radiation, immunotherapy, steroids or chemotherapy)
- Pregnancy
- Have a parent, brother, or sister with a history of immune system problems

***Presumptive evidence of immunity includes any of the following (documented, rather than self-reported):**

- Written documentation of age-appropriate vaccination
- Laboratory confirmation of past infection or had blood tests that show you are immune to measles
- Born before 1957

†High risk groups recommended to receive 2 doses of MMR (or have presumptive evidence of immunity*)

- International travelers
 - Adults and children ages 12 months or older: 2 doses of MMR vaccine
 - Children ages 6 to 11 months: 1 dose of MMR vaccine
- Healthcare personnel (even if born before 1957)
- Students at post-high school educational institutions

† For complete recommendations visit:
https://www.cdc.gov/vaccines/?CDC_AAref_Val=https://www.cdc.gov/vaccines/schedules/