



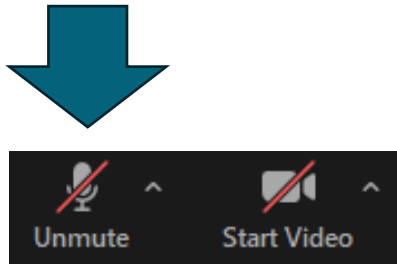
Behavioral Health Town Hall

Marissa Eyanson, Behavioral
Health Director, Iowa HHS

May 2, 2025

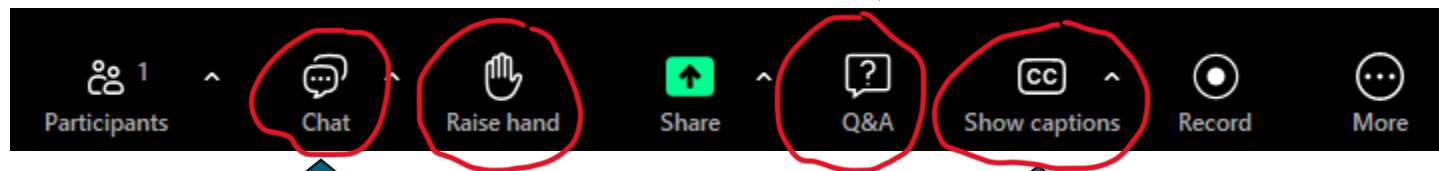
Meeting Logistics: Zoom Navigation

Please ensure your mic is muted when you are not speaking during the meeting. This can be found in the **far-left corner** of your screen.



To ask a question, hit the **“raise hand”** button.

There is a Q&A button for you to type your questions.



Chat button can be found here.

Click the **“CC’ button”** for closed captioning.

Behavioral Health Service System – Statewide Plan

Behavioral Health Service System Statewide Plan: Development



Behavioral Health Service System Statewide Plan: Priorities



**Prioritize Prevention and
Early Intervention**



**Improve System
Coordination**



**Improve Access to
Behavioral Health**

Behavioral Health Service System

Statewide Plan: Outcomes

Build an integrated, comprehensive, statewide system of high-quality behavioral health services.

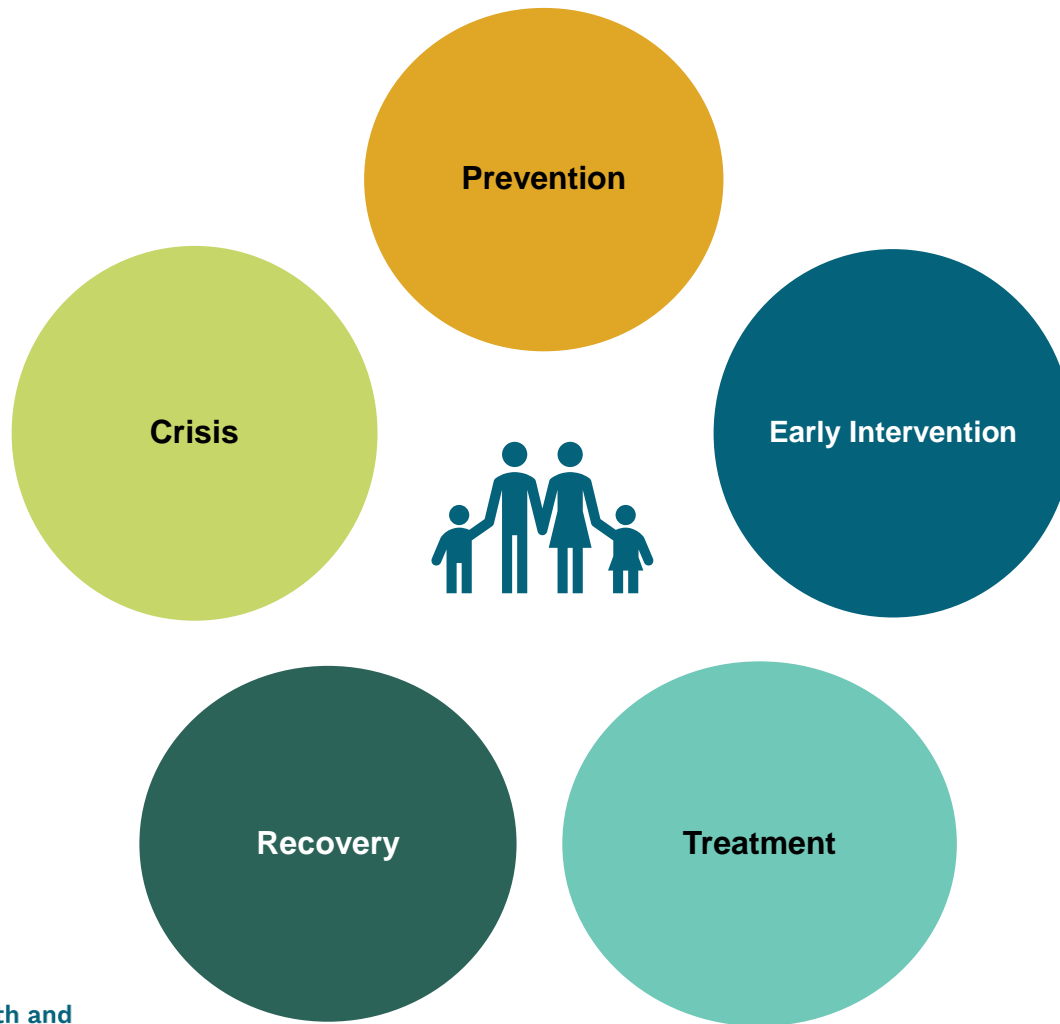
Improve access to high-quality continuum of behavioral health services.

Strengthen Iowa's behavioral health workforce.

Increase behavioral health wellness and reduce the stigma associated to asking for care and support.

Improve health outcomes and decrease the number of Iowans who die due to substance-involvement, overdose, or suicide.

Behavioral Health Service System Statewide Plan: Building the Continuum



Behavioral Health Service System

Statewide Plan: Building the Continuum



Prevention

- ▶ Evidence-based
- ▶ Primary substance-use prevention
- ▶ Universal, selective, indicated
- ▶ System Navigators



Early Intervention

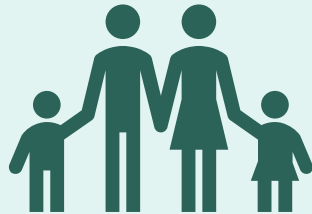
- System Development
- System Navigators



Recovery

- ▶ Peer Support and Peer Recovery Coaching
- ▶ Peer wellness and recovery community centers
- ▶ Transitional living and recovery housing
- ▶ Other peer services
- ▶ System Navigators

Behavioral Health Service System Statewide Plan: Building the “Safety Net”



Coverage

Funding for limited array of treatment services for uninsured and underinsured lowans below 200% FPL who are not eligible for Medicaid.



Providers

Required to fulfill specific access requirements such as 24/7/365 availability or accepting patients regardless of individual ability to pay. For example: CMHC, CCBHC, IPN, and crisis service providers.



Community

Focused investments in prevention, early intervention, recovery support and crisis access to ensure lowans know where and how to access the resources they need and don't delay care until it's too late.

System Navigation

Marissa Eyanson



Health and
Human Services

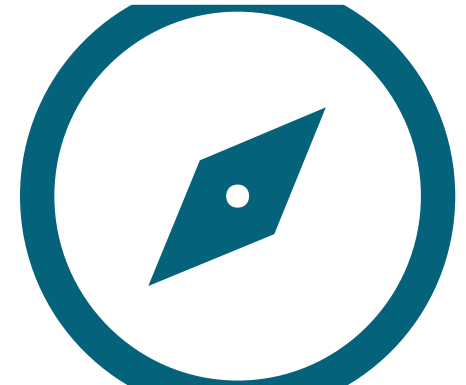
Navigation: No-wrong door



Reliable and Trusted
Information and
Referral



Connection to Services
and Resources



Person-centered
Decision-making
support

Behavioral Health System Navigation

System Navigator positions posted [Career Center | Recruitment](#)

Behavioral Health System Navigator

- ***What it is***
 - No wrong door
 - Information, education, referral and support
 - Brief intervention and accessible
 - Closed-loop referral process
 - Cross-system coordination
 - All Iowans are eligible
 - Uniform entry points
- ***What it is not***
 - Service coordination
 - Case management
 - Clinically-based service
 - Long-term

Will expand to include statewide crisis and jail-based behavioral health system navigation

How to Connect with a System Navigator

Your Life Iowa

- Call
 - 855-581-8111
- Text
 - 855-895-8398
- Chat
 - yourlifeiowa.org

Community-based organizations and providers

Crisis (ie: 988)

Disability Access Points

Other Support Lines (i.e Warm Line, Iowa Concern)

Managed Care Organization

What to Expect

A System Navigator Will Provide:

- ▶ Person-centered information, referral, and support, no judgement just help.
- ▶ Brief interaction to connect lowans to behavioral health services, supports, and resources guided by the individual.
- ▶ Close the loop - follow up on status of referrals and identify additional needs.

Fee Schedule

Marissa Eyanson

SUPTRS DRAFT Service Schedule

H0001	SUD - Assessment	Alcohol, drug and/or gambling assessment
H0004	SUD - Outpatient Treatment Individual Counseling	Level I Outpatient Treatment Behavioral health counseling and therapy (individual), per 15 minutes
H0005	SUD - Outpatient Treatment Group	Level I Outpatient Treatment Behavioral health counseling and therapy (group), per 15 minutes
H0015	SUD - Outpatient Treatment Intensive Outpatient Treatment (IOP)	Level II.1 Intensive Outpatient Treatment (IOP) Minimum of nine hours per week/per diem
H0035	SUD - Outpatient Treatment Partial Hospitalization	Level II.5 Partial Hospitalization Less than 24 hour stay
H2034	SUD - Residential Treatment Clinically Managed Low Intensity	Level III.1 Clinically Managed Low Intensity Residential Treatment (Halfway House)
H2034	SUD - Residential Treatment Clinically Managed Low Intensity (W&C)	Level III.1 Clinically Managed Low Intensity Residential Treatment (Halfway House) Women & Children Enhancement
H0018	SUD - Residential Treatment Clinically Managed High Intensity	Level III.5 Clinically Managed High Intensity Residential Treatment
H0018	SUD - Residential Treatment Clinically Managed High Intensity (W&C)	Level III.5 Clinically Managed High Intensity Residential Treatment Women & Children Enhancement
J5071	SUD – MAT/MOUD Services	MAT/MOUD Medication Expense

Behavioral Health DRAFT Service Schedule

90791	Psychiatric Diagnostic Evaluation
90832 - 90838	Psychotherapy, Individual
90839 - 90840	Psychotherapy for Crisis
90846 – 90853	Psychotherapy, Family and Group
99202 – 99205	Psychiatric Visit, New Patient
99211 – 99215	Psychiatric Visit, Established Patient
via DRG	Inpatient Hospitalization
H0035	Mental Health Partial Hospitalization
H0037	Community Support Program
H0040	Assertive Community Treatment (ACT)
H2011	Mobile Crisis Response
H2013	Subacute Facility
H2017	Intensive Psychiatric Rehabilitation (IPR)
S0201	23-Hour Crisis Observation & Holding
S9480	Intensive Outpatient Program (IOP)
S9484 – S9485TF	Crisis Stabilization community-based services
S9485	Crisis Evaluation
S9485TG	Crisis Stabilization Residential Services
T2048	Psychiatric Medical Institutions for Children (PMIC) - Prior approval required



BH-ASO Implementation Updates

Iowa Primary Care Association



Health and
Human Services

Our Goals for Success on July 1



Iowans continue to receive the services they need



Ensure providers are paid for the services they provide

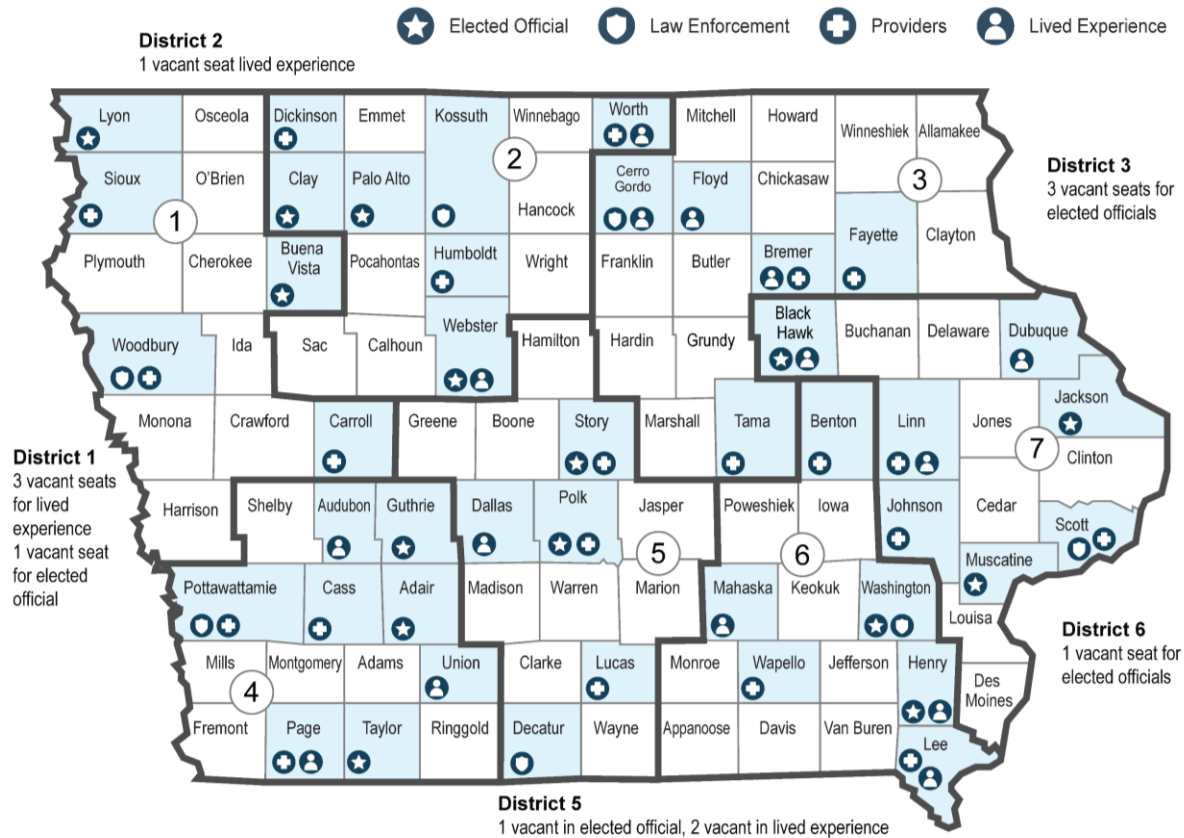


Successfully install behavioral health system navigation

District Advisory Councils

- All seven District Advisory Councils convened April 25 and 28!
- Seated 58 of the 70 Council members
- An average of 55 participants on each Council meeting
- Priority agenda items:
 - Council Roles & Responsibilities
 - BH-ASO Overview and Implementation Updates
 - Behavioral Health Service System Statewide Plan
 - District Assessment & Planning
 - Feedback from Council Members and Members of the Public

District Advisory Council Representation



Contracting Update



Iowa PCA Contracting with Providers and Partners for Continuity and Access

- Currently reviewing expenditure data and existing contracts
- District Planning process and budget targets from Iowa HHS will inform contracting
- We will be reaching out to providers and community partners in mid-May to offer first right of refusal contracts for non-billable services
- Services core to Iowa's BH continuum of care are priority

Email: bhasoproviderrelations@iowapca.org to communicate with the Iowa PCA network development team

Provider Profile Form Overview

- Provider Profile form is posted on the Iowa PCA [website](#) for providers and partners to complete between now and May 16, 2025
- Brief survey that captures:
- Organizational Information
- Prevention Services
- Early Intervention Services
- Treatment Services
- Recovery Services
- Crisis Services
- System Navigation
- General Feedback

BH-ASO Provider Profile - Please Complete by Friday, May 16th

The Iowa Primary Care Association (Iowa PCA) is building a provider network directory and working to ensure we have accurate information about providers interested in contracting to provide services to support Iowa's Behavioral Health Service System and continuum of services, including Prevention & Education, Early Intervention, Treatment, Recovery, and Crisis services. Thank you in advance for completing this form and please feel free to email bhasoproviderrelations@iowapca.org to communicate with the Iowa PCA.


* Required

Section 1: Organizational Information

1. Legal Business Name *

2. Organization DBA (if different than #1)

BH-ASO Provider Profile - Please Complete by Friday, May 16th



BH-ASO Hiring Updates



Abbey Ferenzi

Senior Director of Statewide
District Operations

Email: aferenzi@iowapca.org

Posted Positions:

- Director of Network Development
- Network Contracting Consultant
- System Navigator Leads
- System Navigators
- District Leaders
- Director of System Navigation – soon

iowapca.org/careers

District Assessment & Planning



- **Initial District Assessments Submitted March 31**

- Demographic & Social Economic Analysis
- Current Services Providers
- BH Services Infrastructure
- Strengths & Opportunities

- **Initial District Plans Submitted April 30**

- Sustaining the Provider Network
- A Framework for Installing System Navigation
- Training Plans for System Navigators and Providers
- Plan for Assessing & Reporting Implementation Status of the BH Continuum of Care

Thank You & Resources

More Information

- [Iowa HHS Website](#)
- [Iowa PCA Website](#)
- [District Advisory Councils](#)
- [Map of Behavioral Health Districts](#)
- [FAQs](#)
- [BH Service System Statewide Plan](#)

Town Halls

- Sign up for **all** 2025 Behavioral Health Town Halls [here](#).

Contact

- info@iowapca.org
- bhasoproviderrelations@iowapca.org



Questions



Behavioral Health
Feedback Form



Health and
Human Services