

Iowa REACH Assessment Tool Subcommittee

June 2025

Agenda

► The Assessment Tool memo will:

- Outline the tools we have reviewed
- Describe key considerations for the assessment tool
- Provide a recommendation
- Define outstanding decisions and next steps

Timeline

June

- Discuss memo outline

July

- No meeting due to 4th of July
- Draft and circulate memo

August

- Review, revise, and submit memo

Remainder of the Year

- HHS makes final decision about Assessment Tool
- Other REACH subcommittees provide input on implementation – Please join!

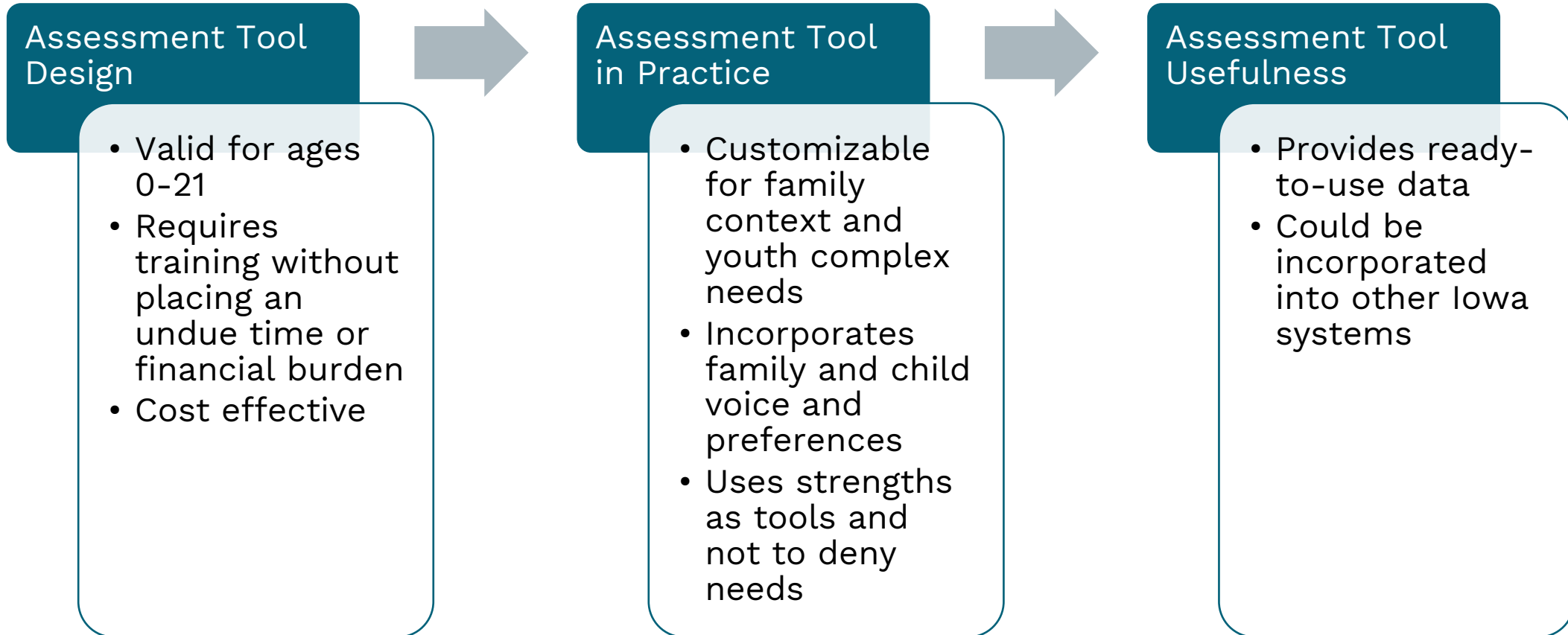
Memo Section 1:

Assessment Tool Review Process

- ▶ Reviewed the CANS, CAFAS, and CALLOCUS-CASII
 - **CANS:** Rates level of strength/need across core items, with family input
 - **CALOCUS-CASII:** Scores need across domains and sums them to determine service intensity
 - **CAFAS:** Trained assessor evaluates "degree of impairment" across domains

- ▶ Reviewed how these tools have been implemented across states
 - CANS is widely used

Section 2: Important Considerations for Assessment Tool



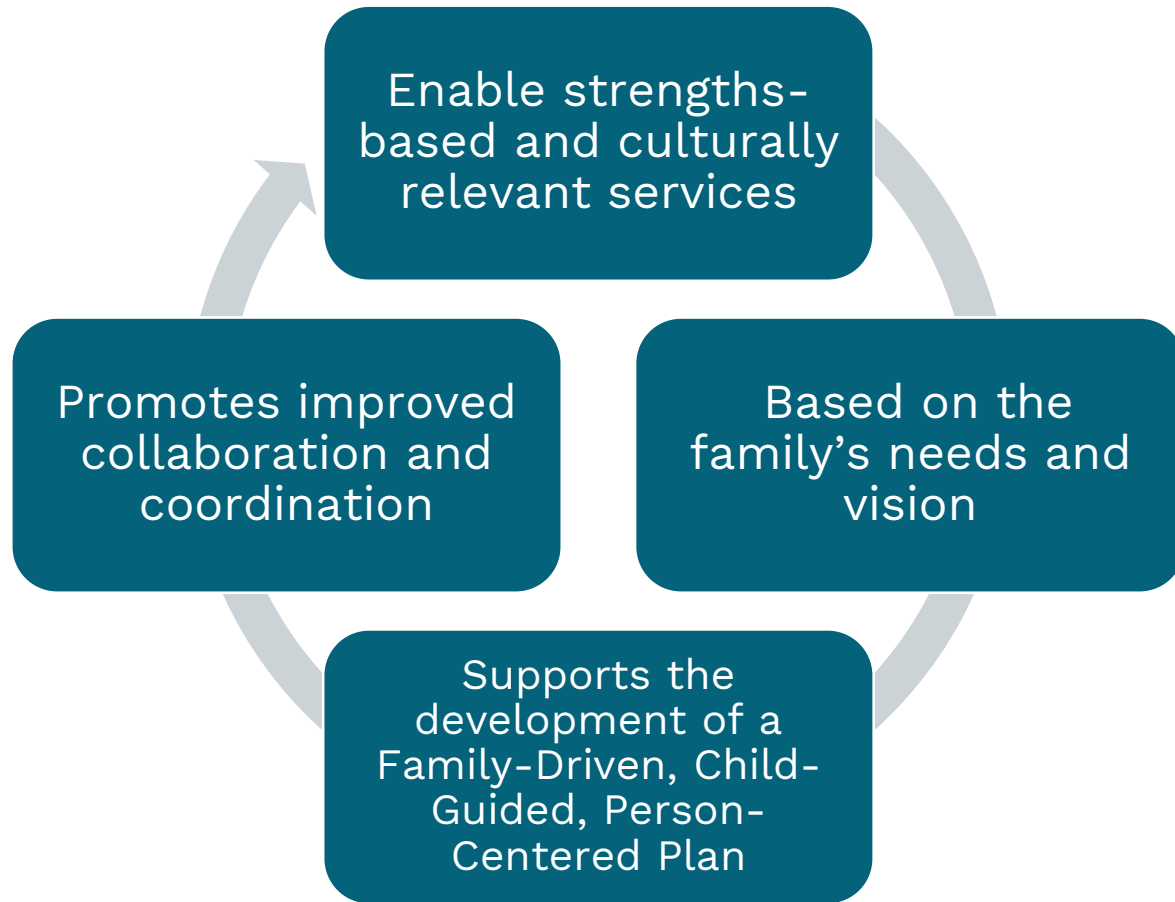
Section 3: Assessment Tool Comparisons

- ▶ Common Elements Among Tools
 - All tools take 1 hour or less to complete
 - No tools require a Masters to administer

Tool Comparisons, cont.

Requirements and Considerations	CANS	CALOCUS-CASII	CAFAS
Valid for ages 0-21	3 states use with adaptations	Another tool in its family can be used for 0-5 yrs	
Requires training without an undue burden	X	X	No required training
Cost effective	Free	Cost per assessment	Cost per assessment
Customizable	X	X	
Family voice incorporated	X	At provider discretion	At provider discretion
Strengths-Based	X	Assesses recovery environment and resiliency	X
Ready-to-use proprietary data			X
Allows data integration within Iowa	X	X	

Section 4: Settlement Agreement Requirements



Are there any gaps between what we have discussed and what is required by the settlement agreement?

Section 5: Recommendation

- ▶ CANS is **recommended** as the only tool that is
 - Holistically strengths-based
 - Collaborative with families to understand their goals
- ▶ CALOCUS-CASII is **not recommended** as it
 - Prescribes a level of care and care setting, which may prevent care in the home and community
 - Has greater training and assessment costs than other tools
- ▶ CAFAS is **recommended against** because it is
 - Not customizable, which may prevent accurate scoring

Sample Implementation Decisions

- ▶ What is the entry point to assessment?
- ▶ How often should the assessment be completed?
- ▶ Will the tool be used for monitoring treatment progress?
- ▶ What types of decision support and training will providers need?
- ▶ What is the payment methodologies for the assessment?
- ▶ How will data from the assessments be gathered for Settlement Agreement reporting purposes and systems monitoring?

Discussion

- ▶ Are there any other topics we should discuss in the memo?
- ▶ What is the most important thing the state should consider when choosing an assessment tool?
- ▶ Is there anything specific about the Iowa context that should influence the choice of assessment tool?

Public Comment