

Iowa REACH Implementation Team Meeting

June 2025

Consumer Steering Committee

May 5 Meeting	June 12 Meeting
<ul style="list-style-type: none">• Reviewed Beneficiary Journey<ul style="list-style-type: none">○ A methodology to develop person-focused outcome measures.	<ul style="list-style-type: none">• Discuss Assessment Tool and burden of assessments for youth and families.• Discuss Intensive Care Coordination and experience managing multiple care coordinators.

Assessment Tool Subcommittee

June 3 Meeting	July 1 Meeting
<ul style="list-style-type: none">• Reviewed Assessment Tool• Recommendation memo outline:<ul style="list-style-type: none">○ Assessment Tool review process○ Important considerations for Assessment Tool○ Settlement Agreement requirements○ Comparisons of the Assessment Tools○ Recommendation○ Next steps for implementation discussions	<ul style="list-style-type: none">• Cancelling July meeting due to holiday• Memo will be drafted and circulated• Goal to submit memo in August 2025

Services and Providers Subcommittee

May 13 Meeting	June 10 Meeting
<ul style="list-style-type: none">• Discussed relevant services including:<ul style="list-style-type: none">○ Family education and training○ Behavior management○ Supportive and therapeutic services• Compared with existing BHIS services	<ul style="list-style-type: none">• Discuss Access to Services<ul style="list-style-type: none">○ Identification○ Assessment○ Transitions○ Eligibility• Compared with existing BHIS services

Communications Subcommittee

May Meeting	June 16 Meeting
<ul style="list-style-type: none">• Did not meet	<ul style="list-style-type: none">• Review website updates• Feedback on current materials• Report findings from Youth Advisory Council

Quality Improvement & Assurance Subcommittee

May Meeting	June 25 Meeting
<ul style="list-style-type: none">• Did not meet	<ul style="list-style-type: none">• Review outline of QMIA Plan

Intensive Care Coordination (ICC) Subcommittee

May 21 Meeting	June 18 Meeting
<ul style="list-style-type: none">• Discuss relevant services including:<ul style="list-style-type: none">○ Care planning○ Care monitoring○ Referral approaches• Compared with existing BHIS services	<ul style="list-style-type: none">• Discuss Access to Services• Compared with existing BHIS services

Behavioral Health Service System

About - Behavioral Health Service System



Organize local behavioral health districts.



Design and procure Behavioral Health Administrative Service Organization.



Form district advisory councils.



Develop a comprehensive statewide plan for behavioral health.



Meaningful inclusion of stakeholder feedback and public comment.

Shared Responsibility Model

Iowa HHS

- Establish Service System Districts
- Develop Service System State Plan
- Administers funding to BH-ASOs
- Develop Service Definitions, Standards, and Reporting Requirements
- Provides training and technical assistance to lead entities
- Provide Training and Technical Assistance
- Execute Activities as Defined by the State Plan

Behavioral Health ASO

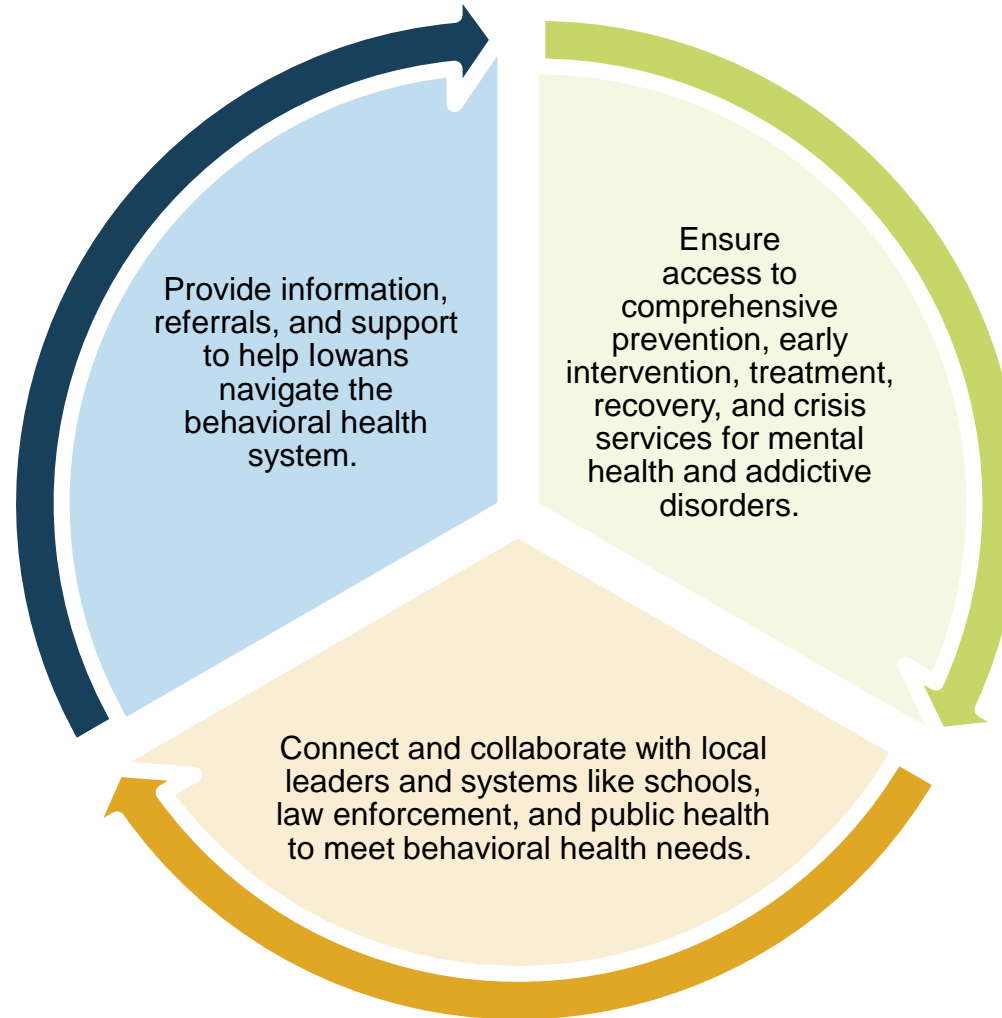
- Ensuring Equitable Access to Behavioral Health Services
- Work with Local Leaders
- Provide System Navigation
- Community Engagement

Local Provider

- Contracts with the BH-ASO
- Provide Services According to the District Plan
- Report Progress and Outcome Data
- Help Iowans Access Services
- Engage in System Assessment and Feedback
- Provide Specialized Support
- Provide Prevention Services
- Crisis Services and Support
- Cultural and Linguistic Competency
- Quality Improvement and Continuous Learning

Behavioral Health Service System

Behavioral Health Administrative Service Organization (BH-ASO)

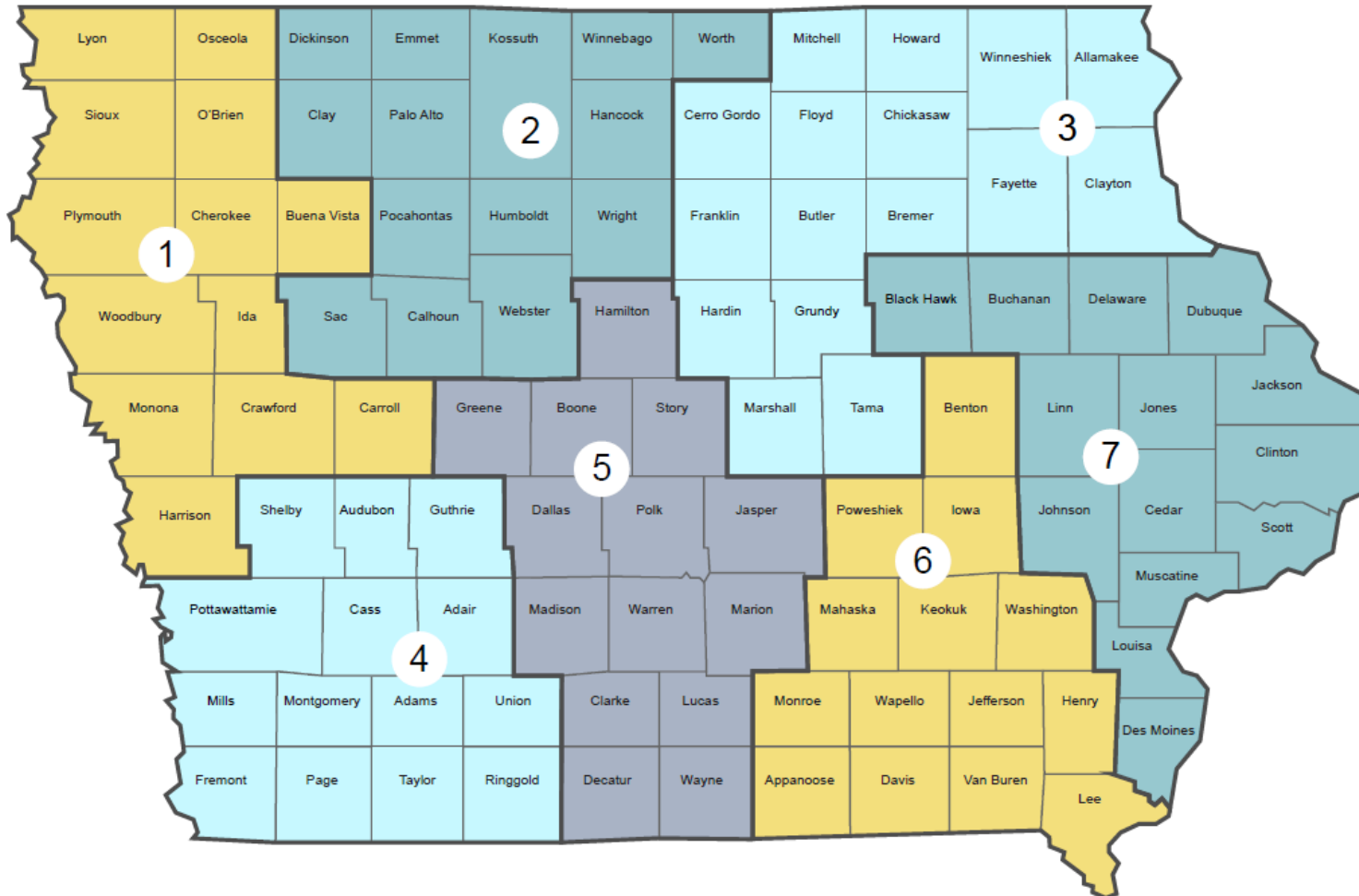


Behavioral Health Service System

Behavioral Health Districts



Behavioral Health Districts

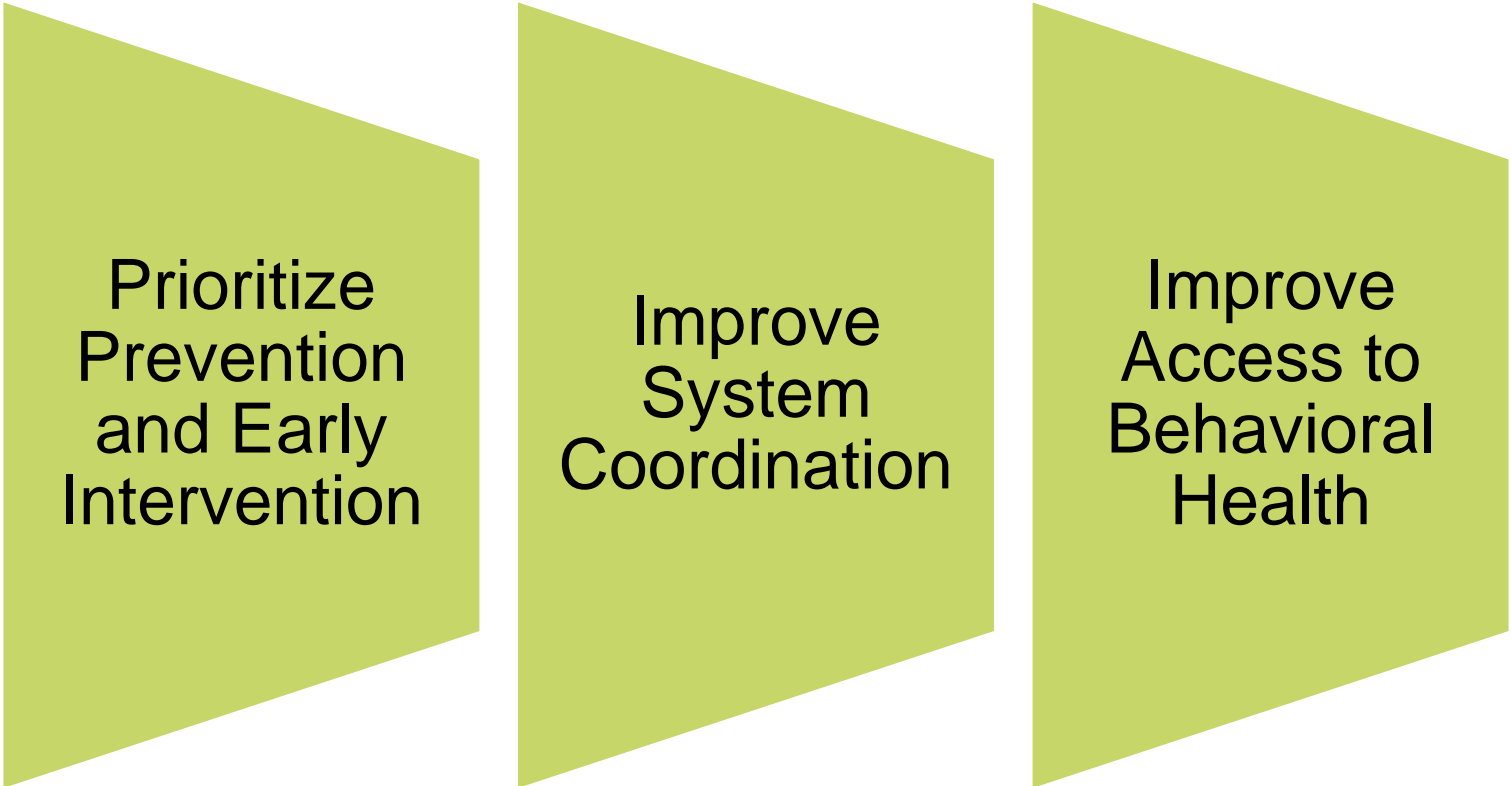


Behavioral Health Service System Statewide Plan: Development



Behavioral Health Service System

Statewide Plan: Priorities



Prioritize
Prevention
and Early
Intervention

Improve
System
Coordination

Improve
Access to
Behavioral
Health

Behavioral Health Service System

Statewide Plan: Outcomes

Build an integrated, comprehensive, statewide system of high-quality behavioral health services.

Improve access to high-quality continuum of behavioral health services.

Strengthen Iowa's behavioral health workforce.

Increase behavioral health wellness and reduce the stigma associated to asking for care and support.

Improve health outcomes and decrease the number of Iowans who die due to substance-involvement, overdose, or suicide.

Behavioral Health Service System Statewide Plan: Building the Continuum



Behavioral Health Service System Statewide Plan: Building the Continuum



Prevention

- ▶ Evidence-based
- ▶ Primary substance-use prevention
- ▶ Universal, selective, indicated
- ▶ System Navigators



Early Intervention

- System Development
- System Navigators



Recovery

- ▶ Peer Support and Peer Recovery Coaching
- ▶ Peer wellness and recovery community centers
- ▶ Transitional living and recovery housing
- ▶ Other peer services
- ▶ System Navigators

Behavioral Health System Navigation

System Navigator positions posted [Career Center | Recruitment](#)

Behavioral Health System Navigator

- ***What it is***
 - No wrong door
 - Information, education, referral and support
 - Brief intervention and accessible
 - Closed-loop referral process
 - Cross-system coordination
 - All Iowans are eligible
 - Uniform entry points
- ***What it is not***
 - Service coordination
 - Case management
 - Clinically-based service
 - Long-term

Will expand to include statewide crisis and jail-based behavioral health system navigation

How to Connect with a System Navigator

Coordination of **state systems**
through the following:

Your Life Iowa

- Call - 855-581-8111
- Text - 855-895-8398
- Chat - yourlifeiowa.org

Coordination of **district systems**
through the following:

Community-based organizations

Crisis (988)

Disability Access Points

Other Support Lines (i.e. 988, Warm Line, Iowa Concern)

Stay Up to Date



[Behavioral
Health Service
System](#)



[Disability Services
System](#)



[Behavioral Health
and Disability
Services FAQs](#)

Public Comment