

2025 Assessment Changes

Medicaid Member Town Hall

June 19, 2025



HCBS Assessment Journey



Assessment upon acceptance of assigned slot

- ▶ When a funding slot becomes available and I accept that slot, I will be assigned an assessor who will use an assessment tool to assess my needs.



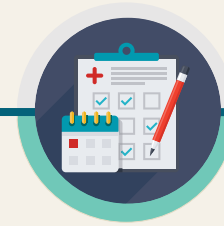
Level Of Care (LOC) determination

- ▶ My assessment will inform my level of care determination and what services I need.



Service planning / referrals

- ▶ A case manager will help me plan my services based on my responses to the assessment.
- ▶ I will direct my own service planning with the help of people I choose.



Ongoing assessment and adjustment

- ▶ To maintain eligibility, I will be assessed yearly and when I need it.
- ▶ I may be assessed in other settings for services not related to my waiver (such as school-based services).

Outcomes



I will identify my vision for a good life.



I will be connected with services that help me reach my life goals.



My service plan will integrate my personal strengths and assets.

Moving to an Independent Assessor

- ▶ In response to member feedback about perceived conflict of interest when the MCO completed the assessment and person-centered planning, **Iowa HHS decided to move to an independent assessor model.**
- ▶ Iowa HHS is transitioning all assessments to a single, independent assessor. This assessor is separate from the MCO.
- ▶ Telligen was chosen as the Core Standardized Assessment (CSA) contractor.
- ▶ Telligen will handle ALL waiver and Habilitation Services assessments by **July 1, 2025.**

Independent Assessor- Timeline

**January
1, 2025**

- Telligen begins doing all assessments for members on the Intellectual Disability (ID) Waiver.

**April 1,
2025**

- Telligen begins doing all assessments for members on Brain Injury (BI), Health and Disability (HD), Physical Disability (PD), HIV/AIDs, and Children's Mental Health (CMH) Waivers.

**May 1,
2025**

- Telligen begins doing the assessments for members accessing Habilitation Services.

**July 1,
2025**

- Telligen begins doing all assessments for members on the Elderly Waiver.
- Telligen now does ALL assessments for ALL members using HCBS in Iowa.



Intellectual Disability (ID) Waiver: InterRAI Assessment Tool Transition

- ▶ An ID Waiver assessment tool, the Supports Intensity Scale –Adult Version (SIS-A) first edition, was discontinued on December 31, 2024.
- ▶ On January 1, 2025, the assessments used to determine level of care for the ID Waiver changed
 - Supports Intensity Scale (SIS) Adult → interRAI Intellectual Disability (interRAI-ID)
 - SIS Child → interRAI Child and Youth Mental Health-Developmental Disability (ChYMH-DD)

Why did Iowa choose interRAI tools for waiver assessments?

- ▶ interRAI assessment tools are used to learn about people's needs and well-being.
- ▶ These tools are used to:
 - Determine if individuals meet eligibility for the waiver.
 - Guide planning for services and supports.
- ▶ interRAI assessment tools have been carefully tested many times and are used in many other states.
- ▶ These tools are proven to work well for people using home and community-based services.

Feedback & Discussion

Mathematica

iowahcbs@mathematica-mpr.com



Health and
Human Services