

Behavioral Health Service System – Statewide Plan

Jennifer Robertson-Hill, Division of
Behavioral Health, Iowa HHS

July 16, 2025

Behavioral Health Service System Statewide Plan: Development



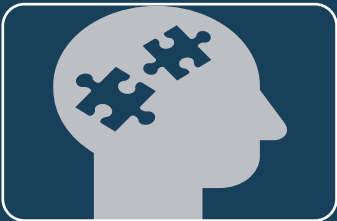
Behavioral Health Service System Statewide Plan: Priorities



Prioritize Prevention and
Early Intervention



Improve System
Coordination



Improve Access to
Behavioral Health

Behavioral Health Service System

Statewide Plan: Outcomes

Build an integrated, comprehensive, statewide system of high-quality behavioral health services.

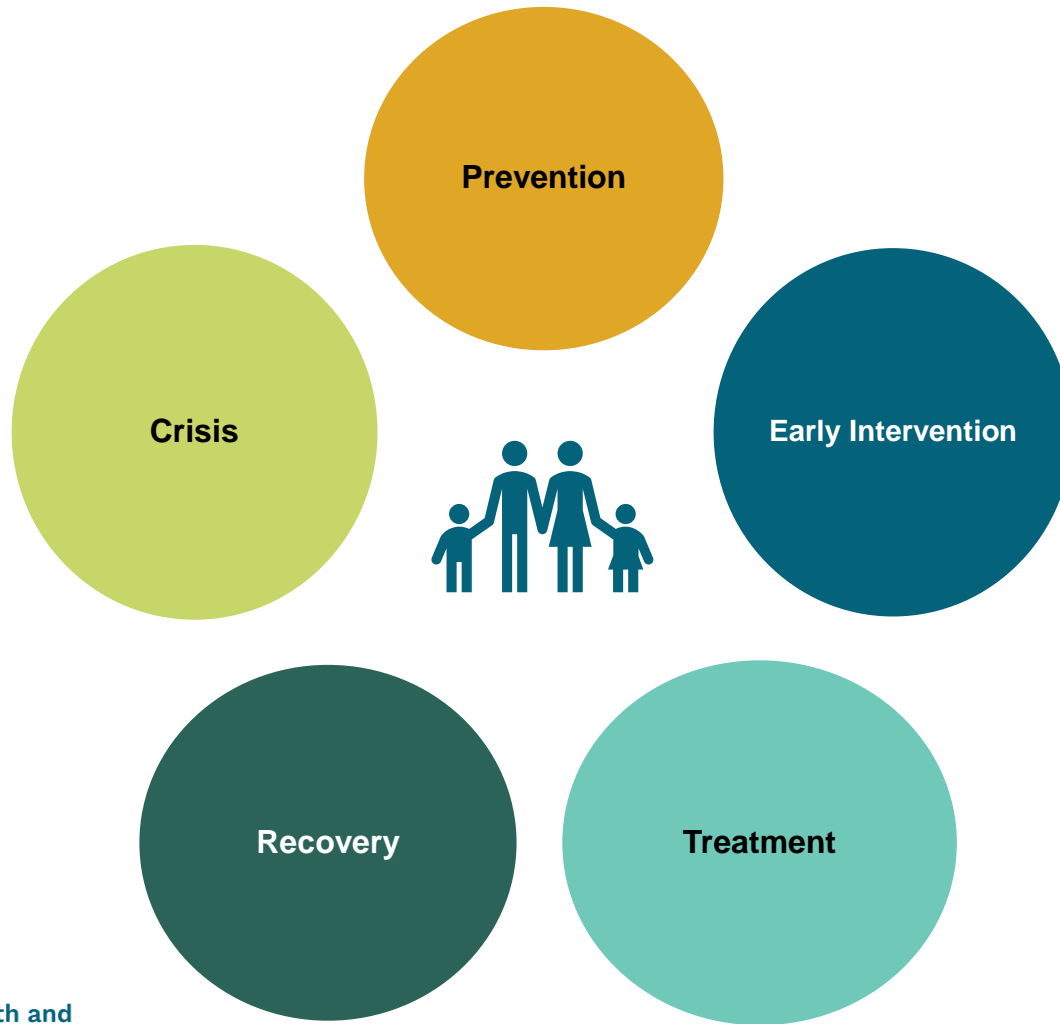
Improve access to high-quality continuum of behavioral health services.

Strengthen Iowa's behavioral health workforce.

Increase behavioral health wellness and reduce the stigma associated to asking for care and support.

Improve health outcomes and decrease the number of Iowans who die due to substance-involvement, overdose, or suicide.

Behavioral Health Service System Statewide Plan: Building the Continuum



Behavioral Health Service System

Statewide Plan: Building the Continuum



Prevention

- ▶ Evidence-based
- ▶ Primary substance-use prevention
- ▶ Universal, selective, indicated
- ▶ System Navigators



Early Intervention

- System Development
- System Navigators



Recovery

- ▶ Peer Support and Peer Recovery Coaching
- ▶ Peer wellness and recovery community centers
- ▶ Transitional living and recovery housing
- ▶ Other peer services
- ▶ System Navigators

Behavioral Health Service System

Statewide Plan: Building the “Safety Net”



Coverage

Funding for limited array of treatment services for uninsured and underinsured Iowans below 200% FPL who are not eligible for Medicaid.



Providers

Required to fulfill specific access requirements such as 24/7/365 availability or accepting patients regardless of individual ability to pay. For example: CMHC, CCBHC, IPN, and crisis service providers.

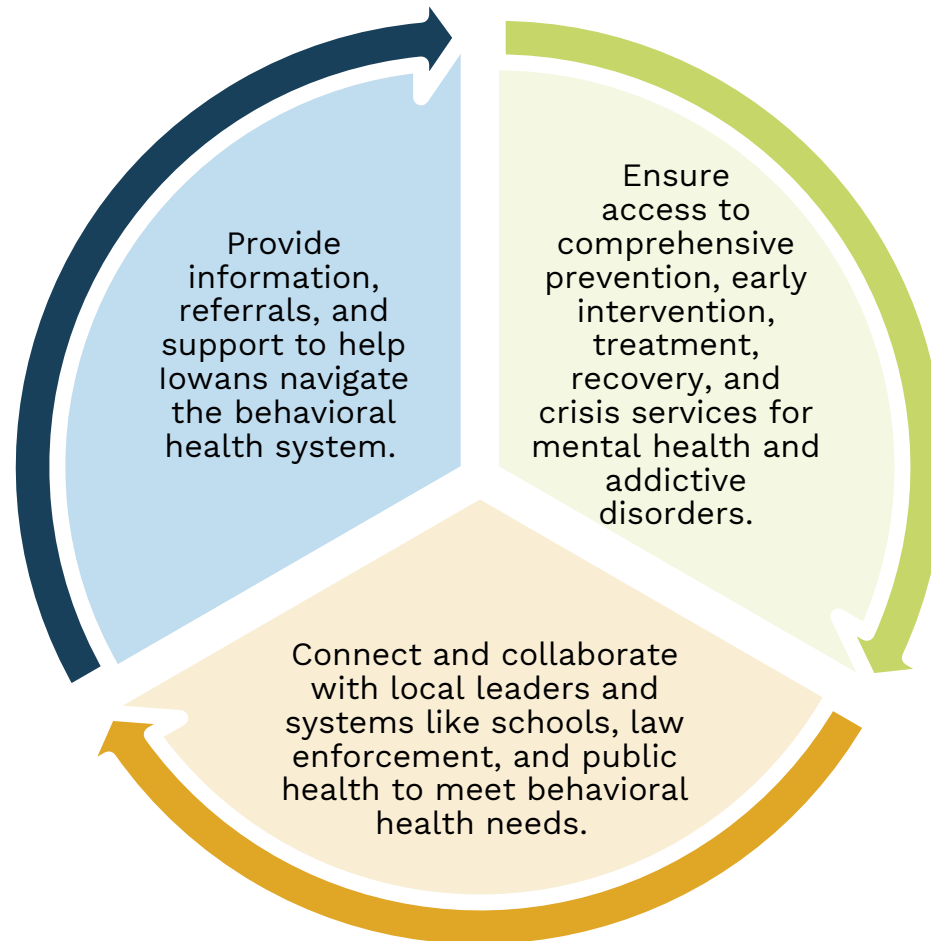


Community

Focused investments in prevention, early intervention, recovery support and crisis access to ensure Iowans know where and how to access the resources they need and don't delay care until it's too late.

Behavioral Health Service System

Behavioral Health Administrative Service Organization (BH-ASO)



System Navigation

What is System Navigation?

Help individuals and families understand the behavioral health service system and provide **information, education, referral and support.**

Brief intervention, **accessible, and available to anyone.**

Utilize closed-loop referral processes to **embed cross-system coordination** such as CCBHCs, Medicaid MCOs, and Disability Access Points.

System Navigation also assists in coordinating key transitions in the behavioral health service system.

Crisis System Navigation includes finding and securing service options, coordinating level of care transitions such as from emergency rooms to crisis, residential, or inpatient care settings and ensuring follow up and after care.

Jail-based Behavioral Health System

Navigation includes ensuring access to jail-based behavioral health services and connecting individuals to aftercare, resources, and follow-up such as: CCBHCs, CMHCs, MH/SUD treatment, recovery services and supports and DAPs.

How to Connect with a System Navigator

Coordination of **state systems** through the following:

Your Life Iowa

- Call
 - 855-581-8111
 - 1-800-BETS OFF
- Text
 - 855-895-8398
- Chat
 - yourlifeiowa.org

Coordination of **district systems** through the following:

Community-based organizations

Law enforcement

Healthcare

Schools

Other Support Lines (i.e. 988, Warm Line, Iowa Concern)

What to Expect

A System Navigator Will Provide:

- ▶ Person-centered care and support, no judgement just help
- ▶ Brief interaction to connect lowans to behavioral health services, supports, and resources guided by the individual
- ▶ Follow up on status of referrals and identify additional needs

Resources

More Information

- [Iowa HHS Website](#)
- [Iowa PCA Website](#)
- [District Advisory Councils](#)
- [Map of Behavioral Health Districts](#)
- [FAQs](#)
- [BH Service System Statewide Plan](#)

Town Halls

- Sign up for **all** 2025 Behavioral Health Town Halls [here](#).



Questions



Health and
Human Services