

KEEPING UP WITH THE COCHLEARS

The Latest in CI Equipment
& Processor Retention

PRESENTED BY:
GABRIELLE S. WATSON, AUD, CCC-A

CONTENT

Review of Cochlear Implants ○

CI Tech Update ○

Connecting Remote Mic Technology
and Listening Checks ○

Processor Retention Options ○



CI COMPANIES



MICROPHONE

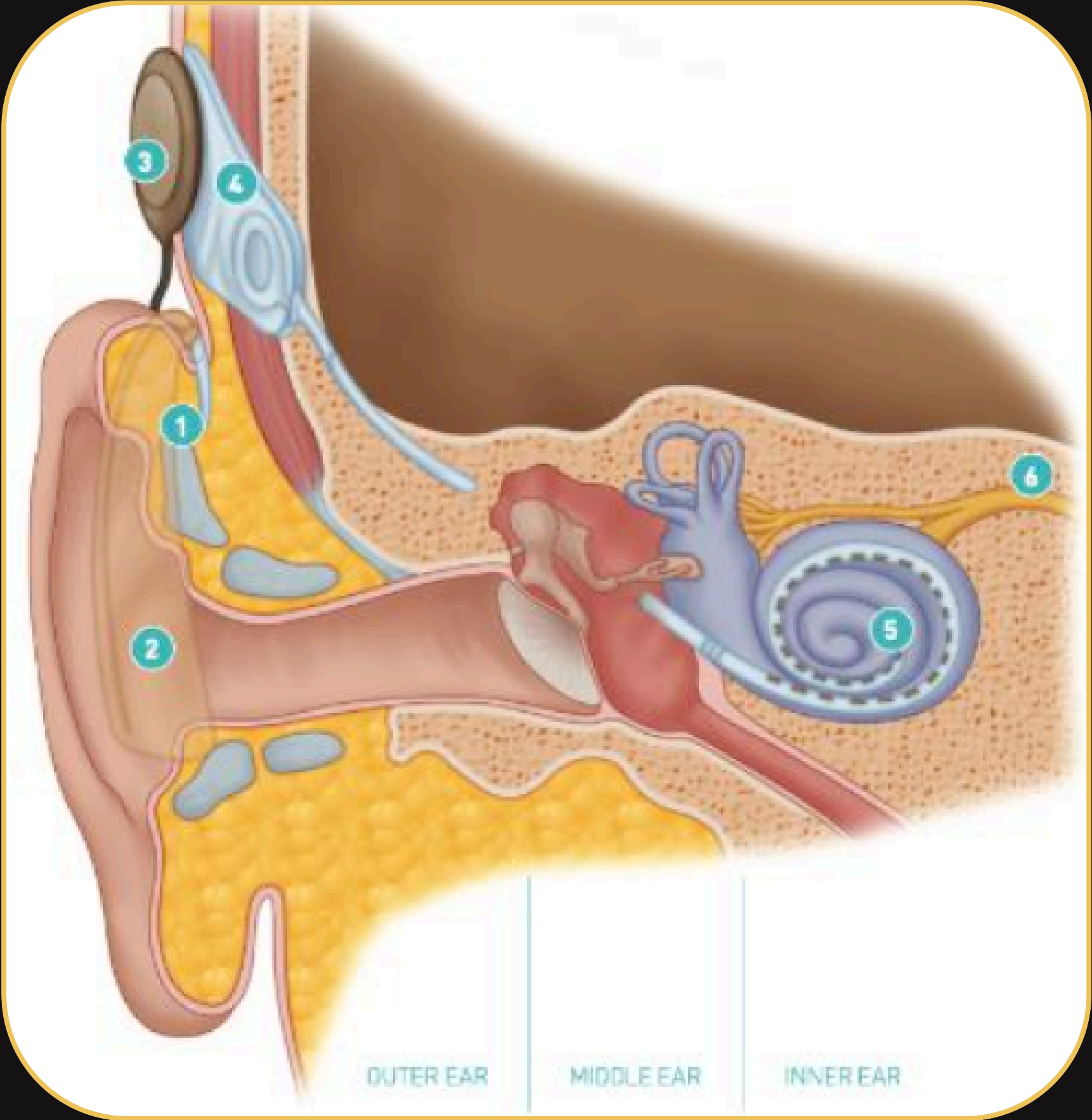
SPEECH PROCESSOR

TRANSMITTER COIL

RECEIVER/STIMULATOR

ELECTRODE ARRAY

AUDITORY NERVE



COCHLEAR IMPLANTS

COCHLEAR AMERICAS

NUCLEUS 7 OBSOLETE JAN 31, 2026

BTE VS. OTE IN A 1 PROCESSOR STATE

RETENTION

K2 CONTACT ISSUES

LISTENING CHECK

SCHOOL CONNECTIVITY



NUCLEUS 8



KANSO 2

CA - NEXA IMPLANT

INTERNAL MEMORY

BETTER BATTERY LIFE

“FUTURE READY”

NUCLEUS 8
NUCLEUS 8 NEXA

KANSO 3
KANSO 3 NEXA



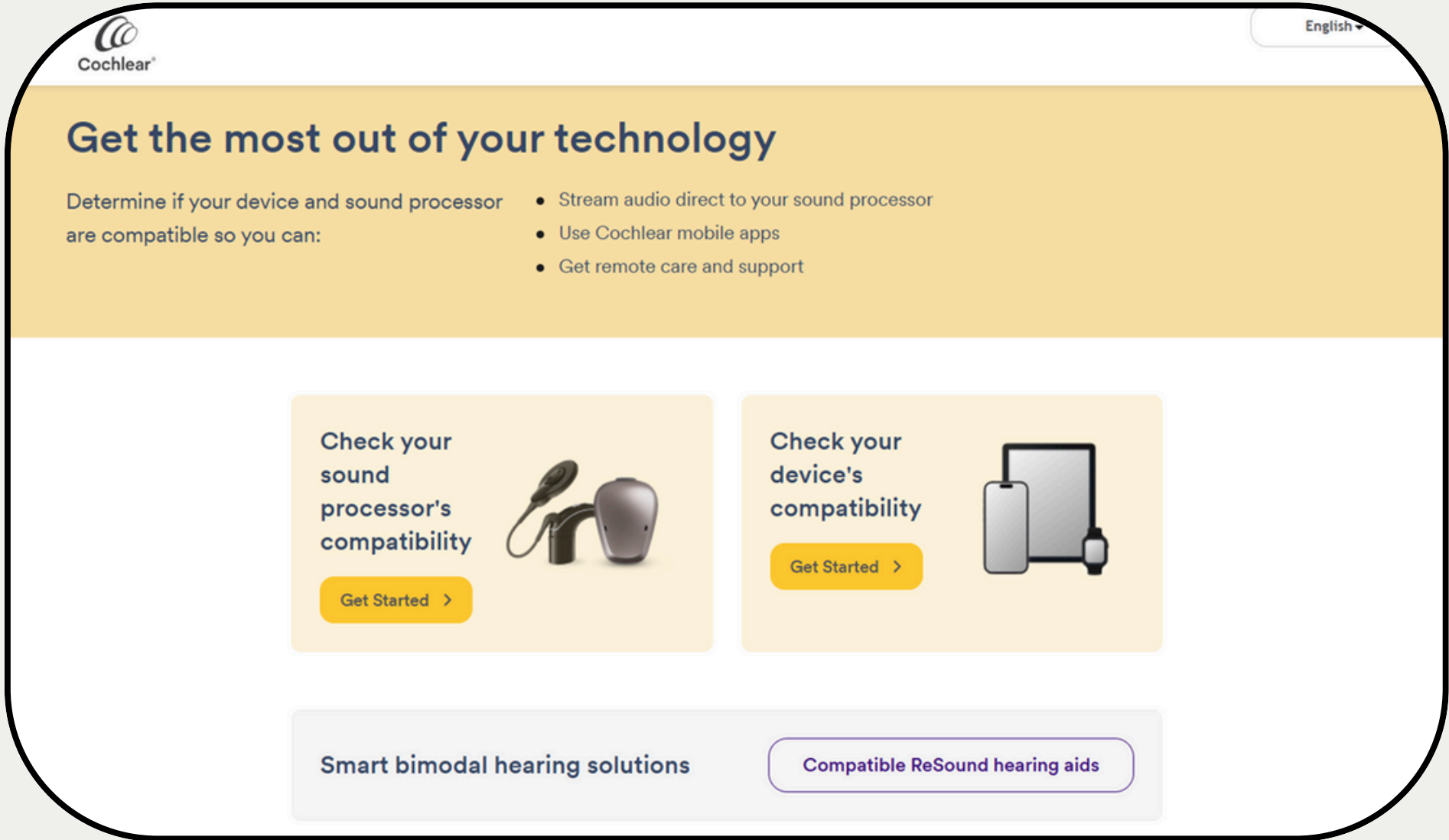
ACCESSORIES & HA COMPATIBILITY

COCHLEAR AND RESOUND - IOS AND SELECT ANDROIDS

RESOUND MULTI MIC/COCHLEAR MINI MICROPHONE 2+

NOT YET COMPATIBLE WITH
MULTI MIC +

[HTTPS://WWW.COCHLEAR.COM/GLOBAL/EN/COMPATIBILITY](https://www.cochlear.com/global/en/compatibility)

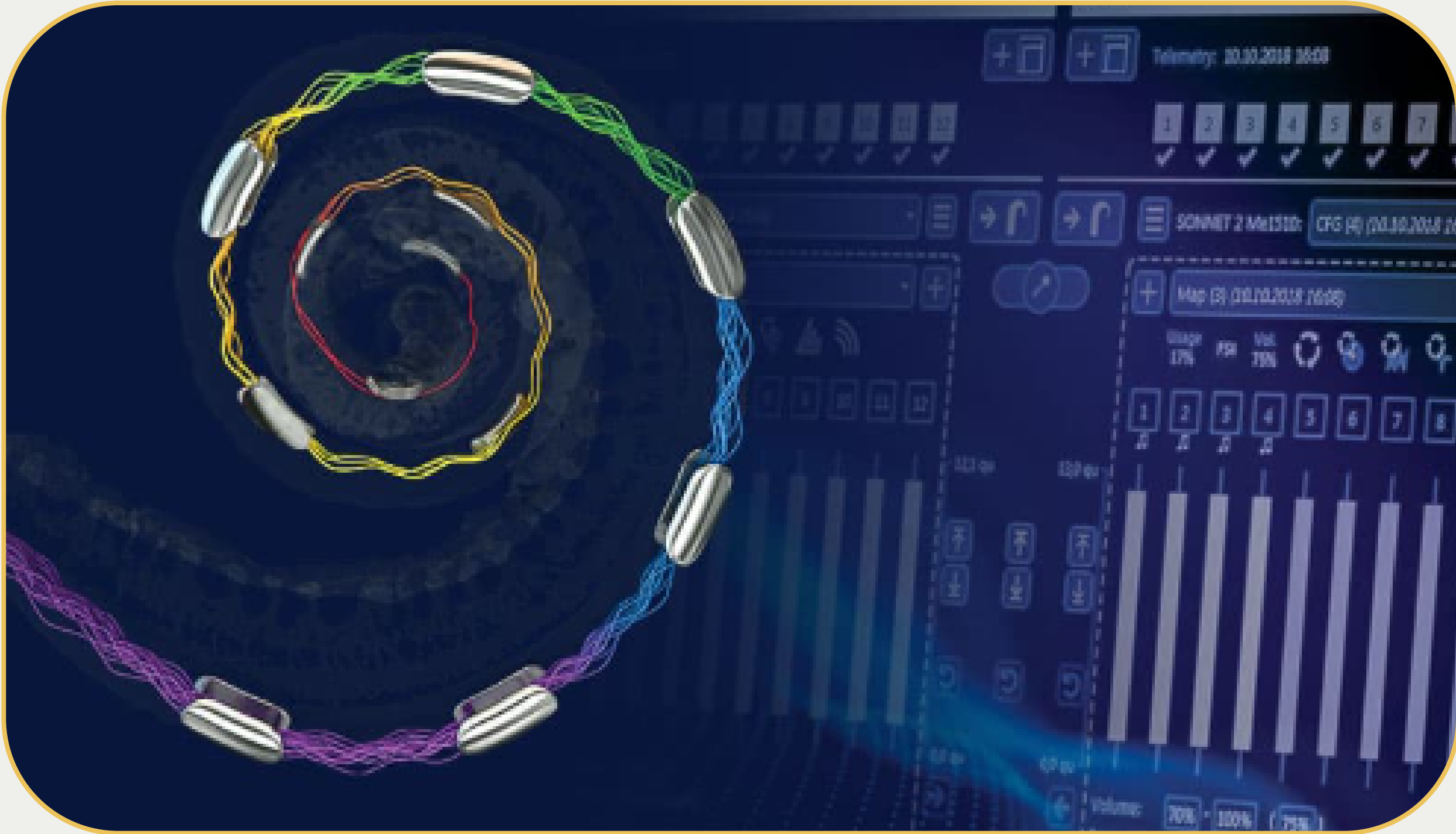


MEDEL

SONNET 3 AND RONDO 3

HEARING PRESERVATION AND SSD

OTOPLAN & ANATOMY-BASED
COCHLEAR IMPLANT FITTING



ACCESSORIES & HA COMPATIBILITY

MEDEL & STARKEY DUALSYNC

NO BTE IN COMPATIBLE
STARKEY LINES

AUDIOLINK/AUDIOLINK XT



REMOTE MIC

TV STREAMER

TELECOIL

DAI

ADVANCED BIONICS

AUTOSENSE SKY OS 3.0

UNIVERSAL BLUETOOTH
CONNECTIVITY

WATERPROOF BATTERY

SKY MARVEL 90 CI



ACCESSORIES & HA COMPATIBILITY

“TWO EAR SOLUTION”

PHONAK SKY LINK M

ROGER DIRECT



REMOTE MIC CONNECTIVITY - ON EAR

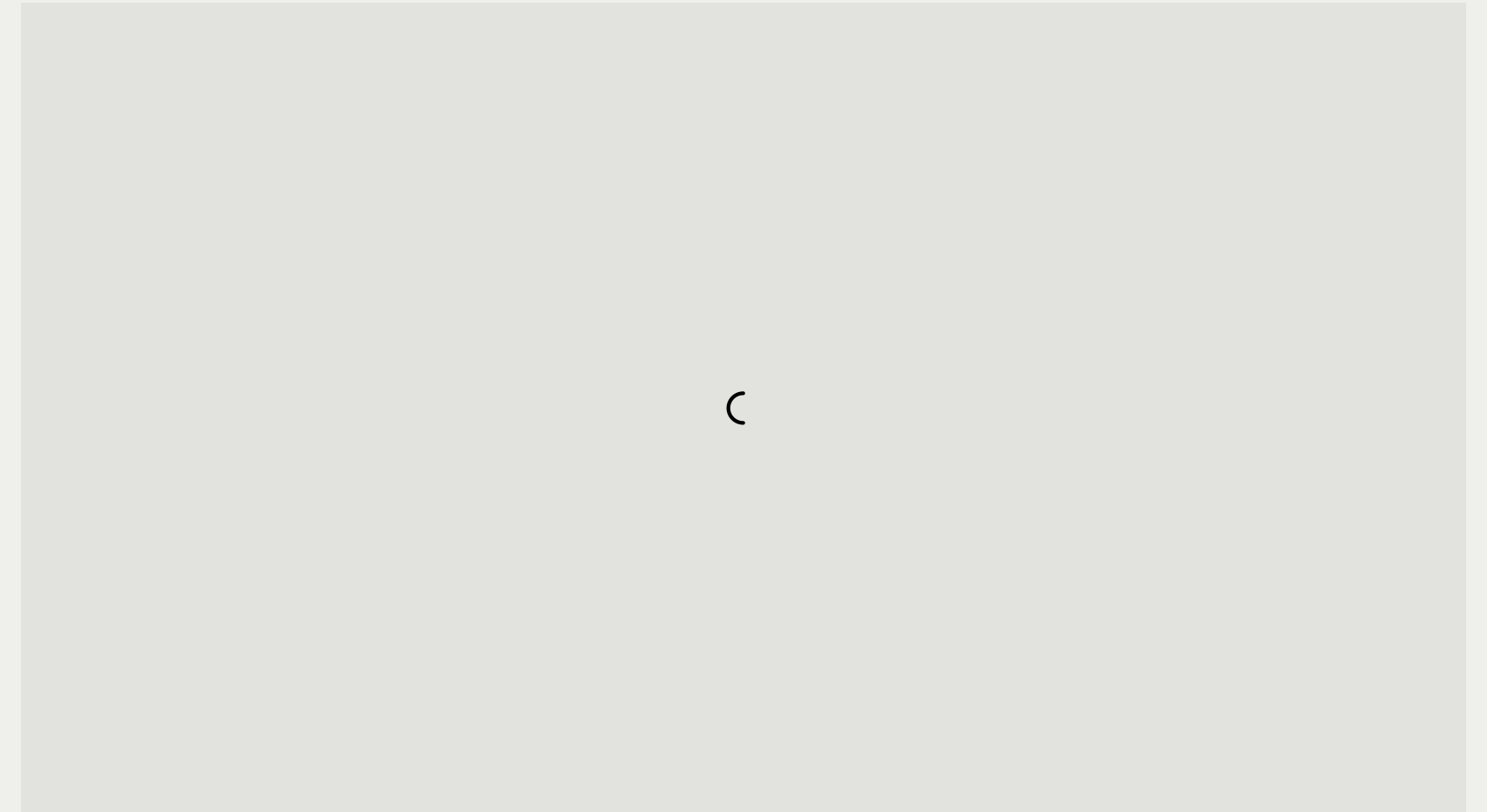
CI Manufacturer	Sound Processor	Remote Mic Transmitter	Remote Mic Receiver
Advanced Bionics	Marvel CI	Compatible Phonak/Oticon Mic	Neck Loop
		Any Roger Mic	Roger Direct
		Any Roger Mic	Roger X & Installer
Cochlear	Nucleus 7/8	Compatible Phonak/Oticon Mic	Neck Loop
		Any Roger Mic	Roger 20
		Any Roger Mic	Roger X & MM2+/Resound Multi Mic
		Cochlear MM2+/Resound Multi Mic	Internal Connectivity
MEDEL	Sonnet 3	Compatible Phonak/Oticon Mic	Neck Loop
		Any Roger Mic	Roger 21 Battery Sleeve
		Any Roger Mic	Roger X & FM Battery Sleeve
		AudioLink XT	Internal Connectivity

REMOTE MIC CONNECTIVITY – OFF EAR

CI Manufacturer	Sound Processor	Remote Mic Transmitter	Remote Mic Receiver
Cochlear	Kanso 2/3	Compatible Phonak/Oticon Mic	Neck Loop
		Any Roger Mic	Roger X & MM2+/Resound Multi Mic
		Cochlear MM2+/Resound Multi Mic	Internal Connectivity
MEDEL	RONDO 3	Compatible Phonak/Oticon Mic	Neck Loop
		Any Roger Mic	Roger X & FM Dongle
		AudioLink/ AudioLink XT	Internal Connectivity

LISTENING CHECKS

<https://www.youtube.com/watch?v=vlAnJ4fSKFU&t=2s>



PROCESSOR RETENTION

SUPPORTING FULL-TIME USE

PRIMING THE AUDITORY PATHWAY

“EYES OPEN EARS ON”

DEALING WITH BEHAVIORS

PHILOSOPHY OF
“LISTENING BREAKS”

➤ [Am J Audiol.](#) 2019 Dec 16;28(4):986-992. doi: 10.1044/2019_AJA-19-0073. Epub 2019 Nov 13.

Age at Full-Time Use Predicts Language Outcomes Better Than Age of Surgery in Children Who Use Cochlear Implants

[Lisa R Park](#)¹, [Erika B Gagnon](#)¹, [Erin Thompson](#)¹, [Kevin D Brown](#)¹

IDEAL VS. WHAT WORKS

MICROPHONE IN PROPER POSITION



BTE SHOULD BE AS
“EAR LEVEL AS POSSIBLE”



IF WE'RE STRUGGLING...
USE WHAT WE CAN GET!

DON'T BE AFRAID TO DOUBLE UP

TRY & TRY AGAIN

FROM THE COMPANIES

Cochlear BTE:

- 1.Snugfit
- 2.Koala Clip
- 3.Shirt Clip
- 4.Earhook
- 5.Hugfit
- 6.Headband
- 7.Headworn Adaptor

Cochlear OTE:

- 1.Hair Clip
- 2.Shirt Clips
- 3.Headbands
- 4. Halo Clip

Advanced Bionics:

- 1.Off the Ear Clip
- 2.On the Ear Huggie

MEDEL:

- 1.ActiveWear
- 2. Baby Wear



MADE BY PARENTS

SYNAPSE

ELOISE’S EARS



EAR SUSPENDERS

CI RETENTION SOLUTIONS

HEARING HENRYS

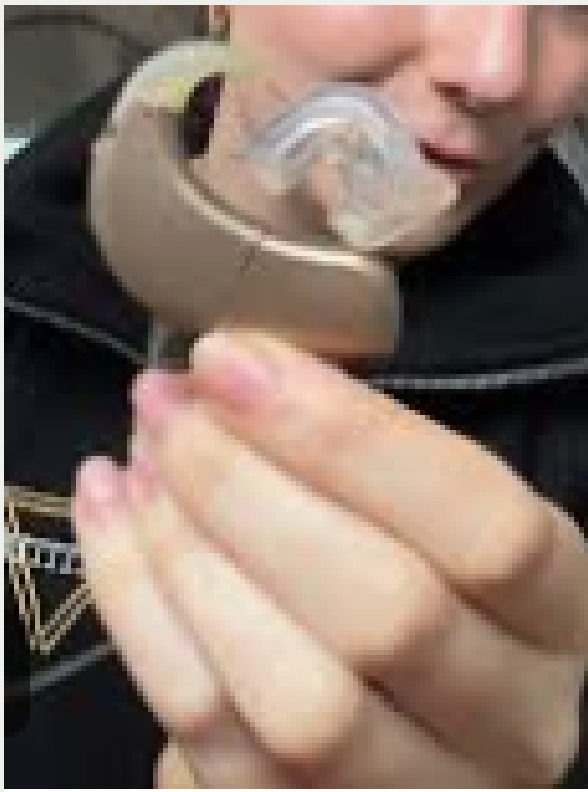


OTHER RETENTION OPTIONS

WIG TAPE

EARMOLDS

PILOT CAPS



HAIR STYLES

IG: TYANNAMYERS

TIKTOK:
THEBRAIDINGBRAT

TIKTOK:
ANNABLAIR,SARSFIELD

IG: SINCERELYTHEMYERS



THANK YOU

Gabrielle S. Watson, AuD, CCC-A

Audiologist II
UIHC Cochlear Implant

gabrielle-watson@uiowa.edu