



Iowa REACH Implementation Team Meeting

6/10/2026



Health and
Human Services

Agenda

- ▶ REACH Updates
 - Subcommittee updates
 - Legislative ask
- ▶ REACH and HOME program alignment
- ▶ Public comment

Subcommittee Updates

Meeting	May Topics	June Topics
Implementation Team	<ul style="list-style-type: none"> • Eligibility criteria 	<ul style="list-style-type: none"> • Legislative update • REACH/HOME Waiver alignment
Consumer Steering Committee	<ul style="list-style-type: none"> • No meeting this month 	<ul style="list-style-type: none"> • Legislative update • REACH/HOME Waiver alignment
Intensive Care Coordination and Services and Providers Subcommittee	<ul style="list-style-type: none"> • Provider training 	<ul style="list-style-type: none"> • TBD
Quality Subcommittee	<ul style="list-style-type: none"> • Eligibility criteria • Benchmarking 	<ul style="list-style-type: none"> • No meeting this month
Communications Subcommittee	<ul style="list-style-type: none"> • No meeting this month 	<ul style="list-style-type: none"> • Legislative update • REACH/HOME Waiver alignment

REACH Legislative Updates

Background

- ▶ REACH was implemented in response to a class action lawsuit to improve the delivery of intensive home and community-based services to support youth with serious emotional disturbance.
- ▶ REACH is a multi-year effort requiring:
 - New services, care coordination systems, assessments, and provider types
 - Enhanced provider training
 - Expanded provider capacity
- ▶ Legislative ask supports implementation and long-term sustainability of the program.

Next Steps

- ▶ HHS is working with our legislative team to engage legislators.
- ▶ We will continue to engage stakeholders throughout Fall 2026.
- ▶ Next legislative session will begin January 12th, 2027.

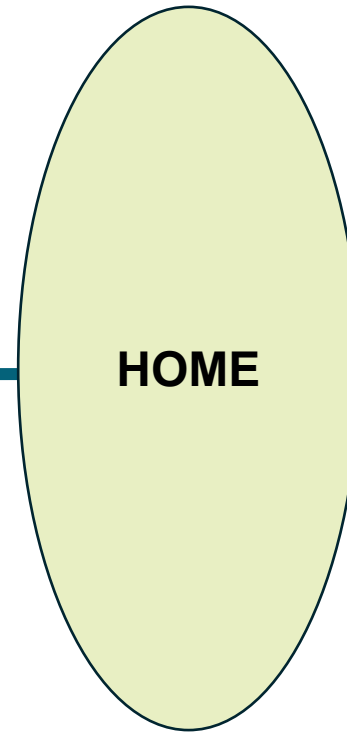
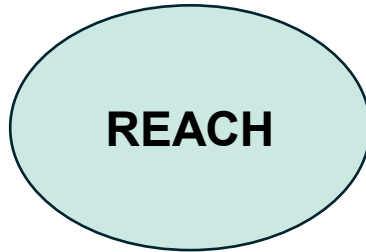
REACH and HOME Program Alignment

Hope and Opportunity in Many Environments (HOME) Project

- ▶ The HOME project is a statewide initiative to transform Iowa's Medicaid-funded Home and Community-Based Services (HCBS) system.
- ▶ The goals of HOME are to enhance services, support people to remain in their communities with their loved ones and make it easier for people to access the supports they need.

Intention of HOME and REACH

Behavioral Health Needs

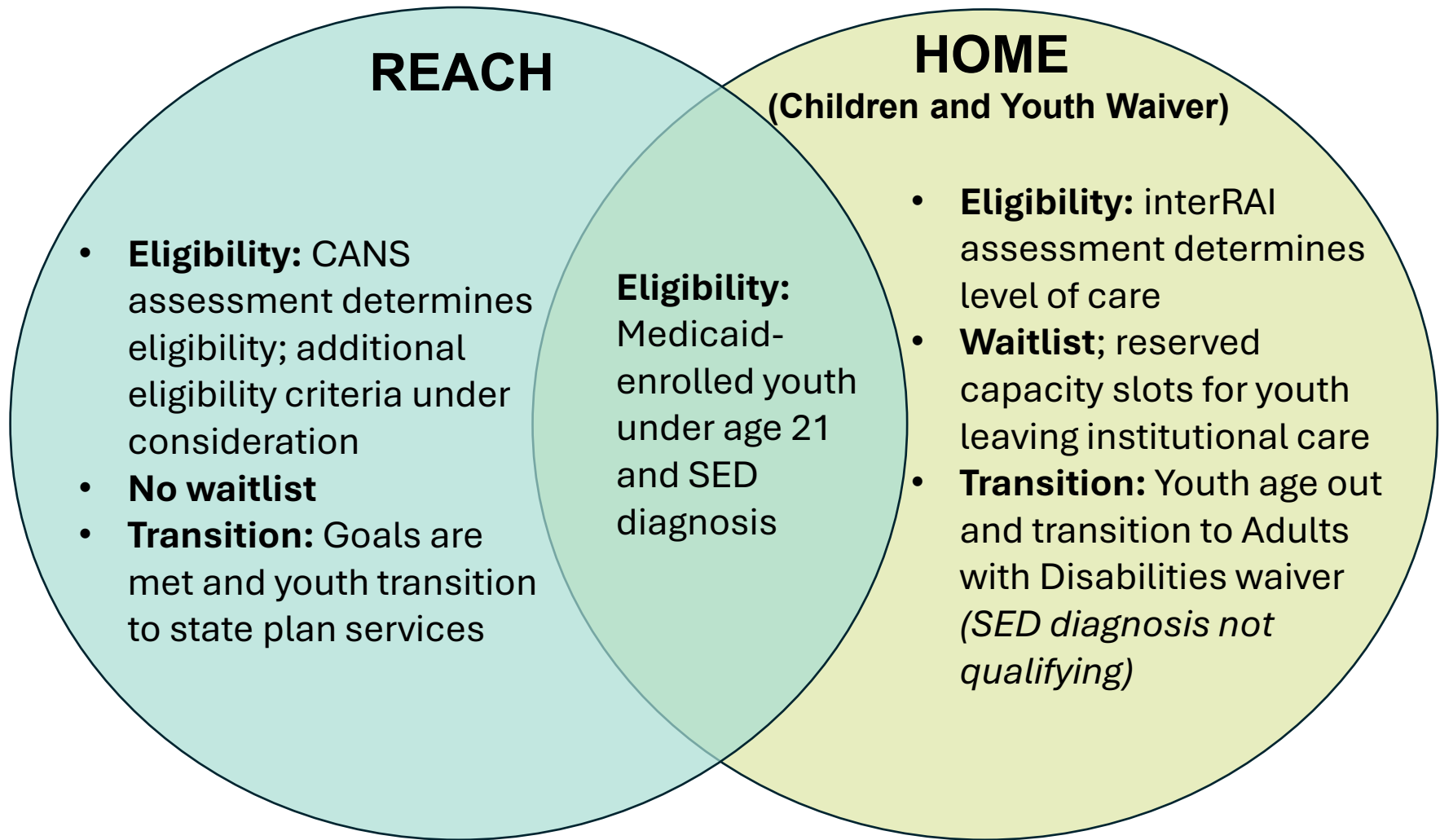


Short-term,
intensive

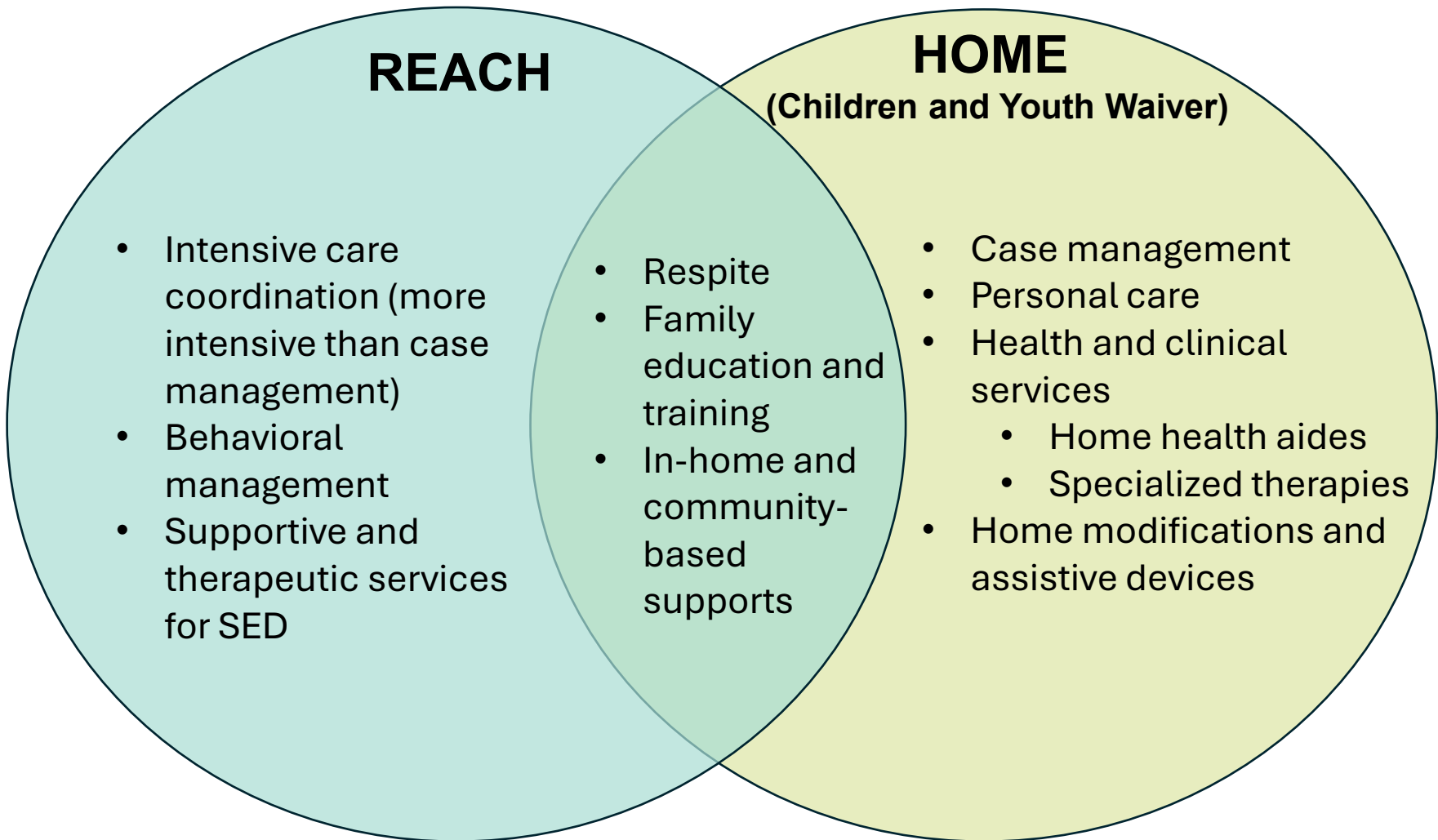
Long-term,
maintenance

Other Health Needs

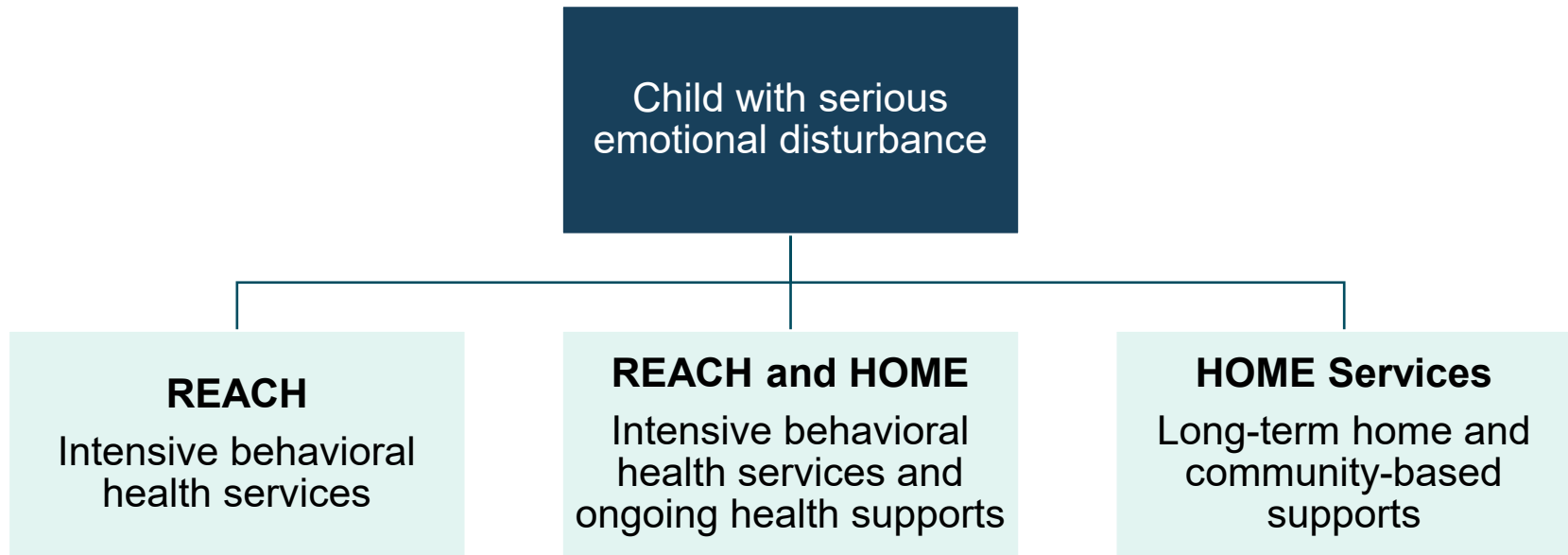
Program Comparison: Entry and Transition



Program Comparison: Services

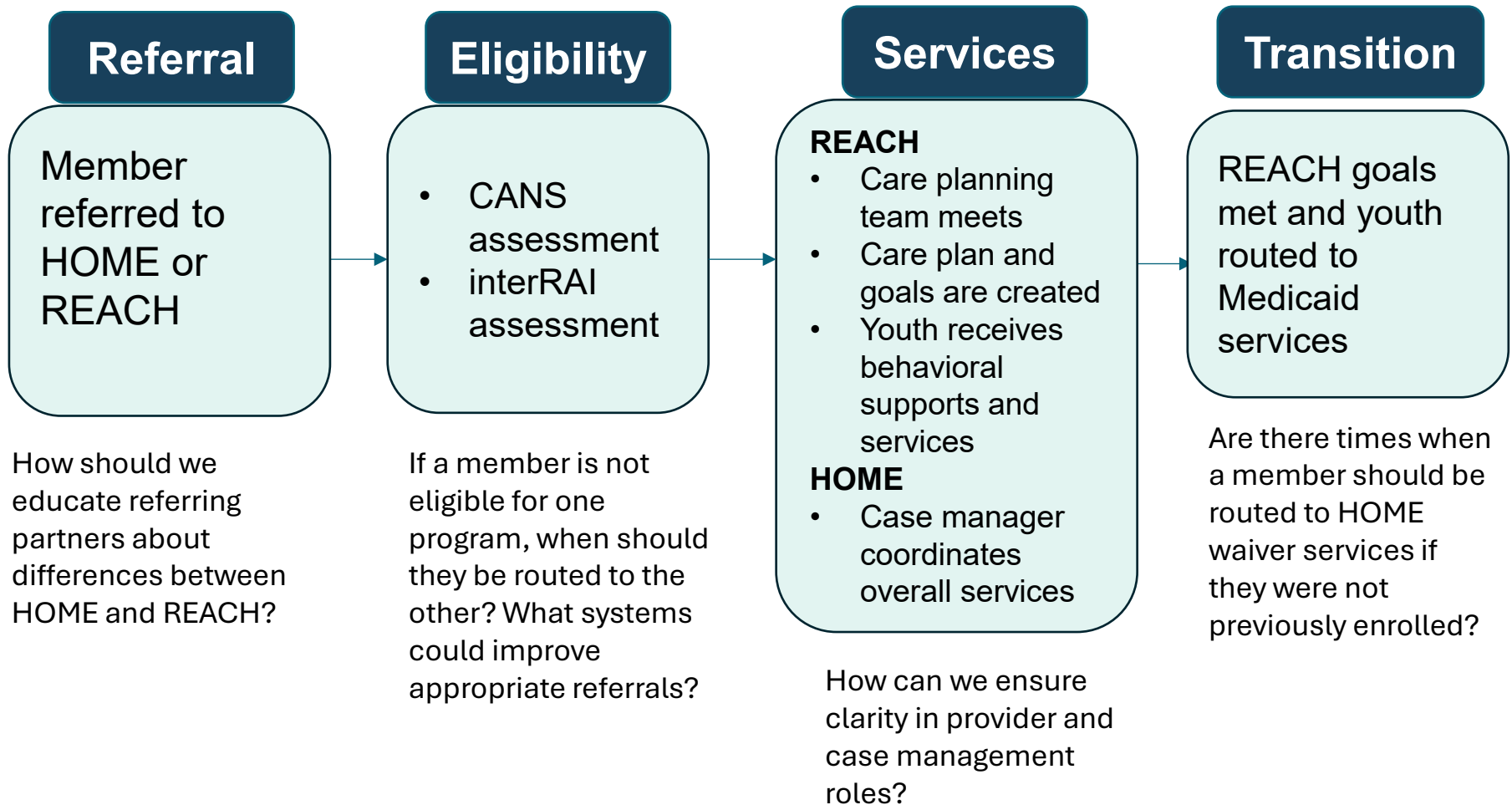


Members Enroll in One or Both Programs



What children would be best suited for receiving services in both programs?

Care Pathway for Members Considering Both Programs



Discussion

- ▶ How can we ensure youth are connected to the program(s) that best suit their needs?
 - What information should families receive when exploring REACH and HOME?
 - What might prevent youth from being referred to the right program?

- ▶ Where should HHS connect REACH and HOME to improve accessibility, and where should the programs remain distinct?

Discussion (cont.)

- ▶ For youth who are concurrently enrolled, what would help providers from both programs coordinate effectively? Should there be defined roles or assigned leads for:
 - Crisis care scenarios
 - Care coordination
 - Care planning with the family
 - Other situations?

- ▶ What challenges might families face in navigating both programs?

Public Comment