

HOME Update

MAC Meeting 06.11.26

LeAnn Moskowitz, LTSS Executive Officer, Medicaid

What is the HOME
project?

Hope and Opportunity in Many Environments (HOME) Project

Iowa HHS is committed to improving its Medicaid home and community-based services (HCBS) waiver system to improve the lives of Iowans who receive services.

The goals of HOME are to enhance services, support people to remain in their communities with their loved ones and make it easier for people to access the supports they need.

The proposed waivers would serve members across the lifespan and in the living situation that works best for them and their families.

Stakeholder Engagement

2022

- Conducted an evaluation of Iowa's community-based services system

2023

- Formed a steering committee to inform HOME
- Surveyed over 600 Medicaid members, caregivers, providers and case managers
- Held 14 HOMEtown Conversations with over 1,000 Iowans

2024

- Created an informational document called a concept paper and held listening sessions
- Surveyed over 3,000 Iowans using the Needs on Waitlist (NOW) Survey
- Conducted a Statewide Access and Provider Capacity Assessment

2025

- Held workgroups with Managed Care Organizations (MCO) and HCBS providers

Findings about the current HCBS system

CHALLENGES

Services do not align with Iowans' needs

It isn't easy to find and access services and supports

RECOMMENDATIONS

- Transition to a waiver system that is needs-based, person-centered and equitable
- Expand service offerings to address the whole person
- Use My Service Plan Limits to meet each person's needs and make sure waiver funds are used efficiently

- Develop a system that is easier to understand and navigate

What is the timeline for HOME?

HOME Timeline

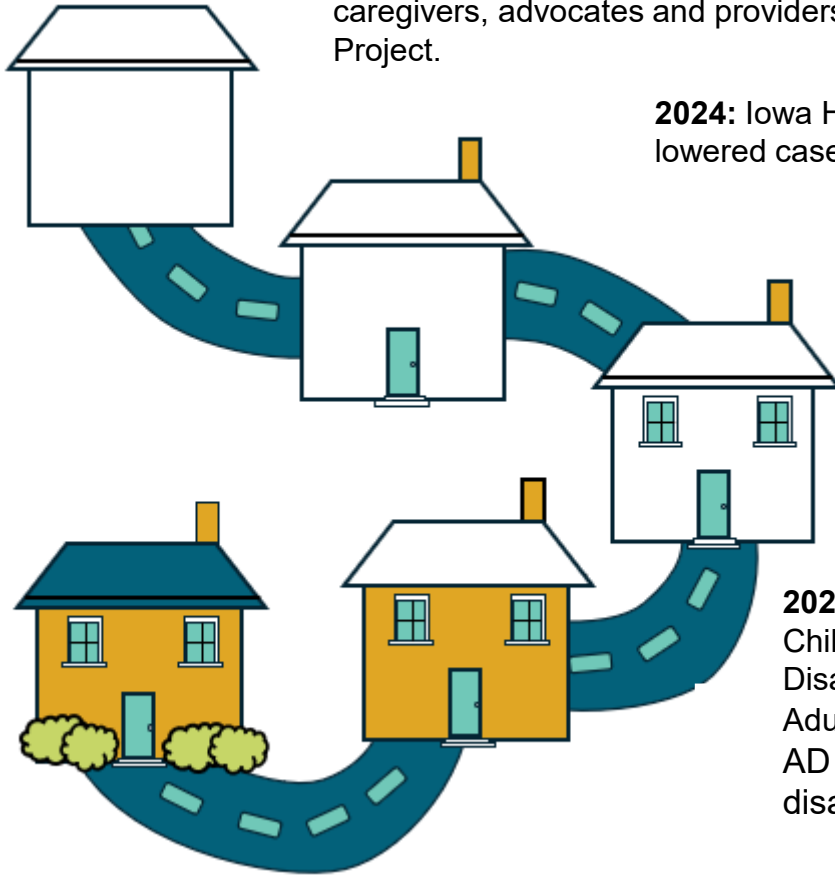
2022 & 2023: Iowa HHS evaluated the HCBS system and spoke with members, caregivers, advocates and providers across Iowa to identify key areas for the HOME Project.

2024: Iowa HHS rolled out standardized case management training and lowered caseloads to give case managers more time with members.

2025: Iowa HHS submitted amendments to their existing HCBS waivers that will go into effect in January 2026. Changes from these amendments include, moving assessments from managed care organizations (MCOs) to an independent assessor and combining a few similar services to make them easier to use and help members find the right services to match their needs.

2026: In October, Iowa HHS will transition members enrolled on the Children's Mental Health (CMH), Health and Disability (HD), Physical Disability (PD) and AIDS/HIV (HIV) waivers into the HOME waivers: the Adults with Disabilities (AD) and Children and Youth (CY) waivers. The AD and CY waivers will also serve Iowans with developmental disabilities and autism.

2027 & Beyond: Iowa HHS will transition members enrolled on the Intellectual Disability (ID), and Brain Injury (BI) waivers into the HOME waivers and will add Supported Community Living, Residential Based Supported Community Living, Day Habilitation and Enabling Technology for Remote Supports onto the HOME waivers.



Populations served on the proposed waivers



ELIGIBILITY & ENROLLMENT | To be eligible, members must meet three criteria: (1) financial eligibility requirements, (2) their disability fits into one of the categories below and (3) they need a level of care that would be provided in an institution.

CURRENT HCBS WAIVERS (2025)

WAIVER	GROUPS SERVED	AGES SERVED
Elderly	• Aging	65+
Intellectual Disability (ID)	• ID	0+
Brain Injury (BI)	• BI	0+
AIDS/HIV	• AIDS/HIV	0+
Health & Disability	• Physical disability; blind or disabled	0-64
Physical Disability (PD)	• PD; blind or disabled	18-64
Children's Mental Health	• Serious emotional disturbance (SED)	0-17



PHASE 1 (2026)

WAIVER	GROUPS SERVED	AGES SERVED
Elderly	• Aging	65+
ID	• ID	0+
BI	• BI	0+
Children & Youth	• AIDS/HIV • BI • ID • PD; blind or disabled • SED • Developmental Disabilities • Autism	0-20
	• AIDS/HIV • BI • ID • PD; blind or disabled • Developmental Disabilities • Autism	21+



PHASE 2

WAIVER	GROUPS SERVED	AGES SERVED
Elderly	• Aging	65+
Children & Youth	• AIDS/HIV • BI • ID • PD; blind or disabled • SED • Developmental Disabilities • Autism	0-20
	• AIDS/HIV • BI • ID • PD; blind or disabled • Developmental Disabilities • Autism	21+

What are the
major updates to the
HOME waivers?

What are the major updates underway and upcoming for HOME?

January 2026

- **Waitlist:** Expanding the Waiver Priority Needs Assessment (WPNA) to help HHS better understand the needs of people on waitlists, including if people are at risk of institutionalization.
- **Service packages:** Streamlining service definitions and aligning definitions across waivers.
- **Assessment:** Implementing the core questions component of the uniform assessment, with all waiver members using interRAI assessment tools.

Phase 1

- **Assessment:** Implementing last part of full uniform assessment process (utilization of the assessment questionnaire).
- **Service packages:** Aligning service packages with state plan services and adding two new waiver services.
- **Eligibility:** Expanding AD and CY waiver populations to include developmental disability and autism.
- **Service Funding:** Implementing a monthly funding limit based on level of care.

Phase 2

- **Service funding:** Implementing My Service Plan Limit (mySPL), a monthly funding limit for services based on assessed need.
- **Service packages:** Adding services currently only on BI and ID waivers to AD and CY waivers.

Which interRAI tools will members complete?

interRAI Tool	Members who will complete the tool
Intellectual Disability (ID)	Adults with ID who are 18 years and older.
Home Care (HC)	Adults with disabilities other than ID who are 18 years and older.
Pediatric Home Care (PEDS-HC)	Children and youth with health needs ages 4 to 17.
Child and Youth Mental Health (ChYMH)	Children and youth with serious mental illness ages 4 to 17.
ChYMH-Developmental Disabilities	Children and youth with developmental disabilities ages 4 to 17.
Early Years	Children ages 0 to 3.

- ▶ In addition to the core set of questions, the uniform assessment includes different tools designed for different populations. Each year, members and their care team will determine which interRAI tool is the best for their unique needs.

Phase 1: AD Waiver Service Package

Service packages: See Appendix C of the waivers for more information

/ Daily activities and care:

- Attendant Care (Skilled and Unskilled)
- Companion
- Home Health Aide
- Home Delivered Meals
- Home Maintenance Support
- Respite
- Transportation

/ Help with health needs:

- Positive Behavioral Support and Consultation
- Family Training
- Interim Medical Monitoring and Treatment
- Nursing
- Nutritional Counseling

/ Equipment and modifications

- Assistive Devices
- Home and Vehicle Modifications
- Personal Emergency Response System
- Specialized Medical Equipment

/ Day Services

- Adult Day Care
- Prevocational Services
- Supported Employment

/ Residential Services and Supports

- Assisted Living

/ Self-Direction Supports

- Financial Management Service
- Independent Support Broker
- Individual Directed Goods and Services

/ New Services

- Community Transition Services
- Peer Mentoring

Service Crosswalk for Members Moving Onto the AD Waiver

Service packages: See Appendix C of the waivers for more information

- ▶ Counseling, which is currently on the HIV waiver service package, will not be on the AD waiver.
- ▶ The table below shows how people over age 21 transitioning to the AD waiver can access counseling services.

What you receive today	What you can receive after October 1, 2026
Counseling (H0004, 96164, 96165) through HIV waiver	Individual or group therapy (90832, 90834, 90836) through state plan services

Phase 1: CY Waiver Service Package

Service packages: See Appendix C of the waivers for more information

/ Daily Activities and Care:

- Home Delivered Meals
- Respite
- Transportation
- Medical Day Care for Children

/ Help with Health needs:

- Positive Behavioral Support and Consultation
- Family and Community Support

/ Equipment and Modifications

- Assistive Devices
- Home and Vehicle Modifications
- Personal Emergency Response System

/ Day Services

- Prevocational Services
- Supported Employment

/ Self-Direction Supports

- Financial Management Service
- Independent Support Broker
- Individual Directed Goods and Services

/ New Services

- Community Transition Services
- Peer Mentoring

Service Crosswalk for Members Moving Onto the CY Waiver

Service packages: See Appendix C of the waivers for more information

- ▶ If you are under 21 years old and accessing waiver services, some of your existing services may not be included on the CY waiver service package. The table below shows how some current waiver services will transition to state plan services.

What you receive today	What you can receive after October 1, 2026
In-home Family Therapy (H0046) through CMH waiver	Family training and counseling (T1027) through the state plan services
Counseling (H0004, 96164, 96165) through HIV waiver	Individual or group therapy (90832, 90834, 90836) through state plan services
Attendant Care- Unskilled (T1019, S5125) through HIV, HD, or PD waivers	Personal Care (S9122 -Rev. Code 572) through state plan services
Attendant Care- Skilled (T1019 U3, S5125 U3), Home Health Aide (T1021), Nursing (T10310, T1031, S9123, S9124), or Interim medical monitoring and treatment (IMMT) (T1002, T1003, T1004, T1004 U3) through HIV, HD, or PD waivers	Private Duty Nursing (T1000, Rev. Code 559) through state plan services

Service Crosswalk for Members Moving Onto the CY (Cont'd)

Service packages: See Appendix C of the waivers for more information

- ▶ There are other services that young adults (age 18-20) may be receiving on their current waivers (HIV, HD) that are not a part of the CY Waiver.
- ▶ These services are not included in the CY waiver because they are adult services, and they are currently used by very few members under age 21.
- ▶ These are listed below; young adults accessing these services should work with their case managers to identify which of the following alternatives may best meet their needs.

What you receive today	What you can receive after October 1, 2026
Adult Day Care (S5100, S5100 UA, S5101, S5102, S5105) through HD waiver	Young adults may instead benefit from: <ul style="list-style-type: none"> • Medical Day Care for Children (T2027) through the CY waiver • Supported Employment (T2018, H2025, H2023) through the CY waiver
Homemaker (S5130) or Home Maintenance Support (S5120) through AIDS/HIV and HD waivers	Young adults living on their own who accessed these supports before should instead identify natural supports and community resources to help cover these needs.

What's Next?

Next Steps

- ▶ Submit the CY and AD Waiver applications to CMS and work towards approval with CMS
- ▶ Prepare and submit waiver amendments terminating the waivers transitioning to the CY and AD Waivers.
- ▶ Continue to prepare and test for system changes and file interfaces
- ▶ Continue to prepare and disseminate HOME resources, tools and guidance documents



Health and
Human Services

Questions
