



# Iowa REACH Consumer Steering Committee Meeting



Health and  
Human Services

# Agenda

- ▶ REACH Updates
- ▶ REACH and HOME program alignment
- ▶ Public comment



# REACH Updates

---



Health and  
Human Services

# REACH Initiative Goals

- ▶ Through REACH services, youth with SED will have access to high intensity, family-centered services that help them receive treatment in their home and community
  
- ▶ REACH is a multi-year effort requiring
  - New services, care coordination systems, assessments, and provider types
  - Enhanced provider training
  - Expanded provider capacity

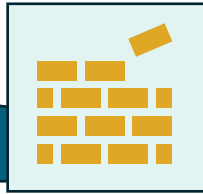
# 2026 Engagements

- ▶ Consumer Steering Committee closing following the development of key deliverables
- ▶ In the Fall, HHS will prepare a legislative ask to support implementation and long-term sustainability of REACH
- ▶ We will continue to engage subcommittee members, the public, and other stakeholders as we prepare for implementation
- ▶ Subcommittee members are welcome to continue providing feedback through the **Implementation Team** the second Wednesday of the month

# REACH Timeline



**2025:** Iowa HHS worked with 7 Subcommittees including providers and community members to recommend what an ideal REACH system would look like for youth and families.



**2026:** Iowa HHS will continue to engage stakeholders to design and prepare for implementation of REACH services.

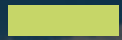


**2027:** REACH services will be implemented among early adopter providers.



**2028 and Beyond:** REACH services will be implemented statewide by July 1, 2028.





# REACH and HOME Program Alignment

---

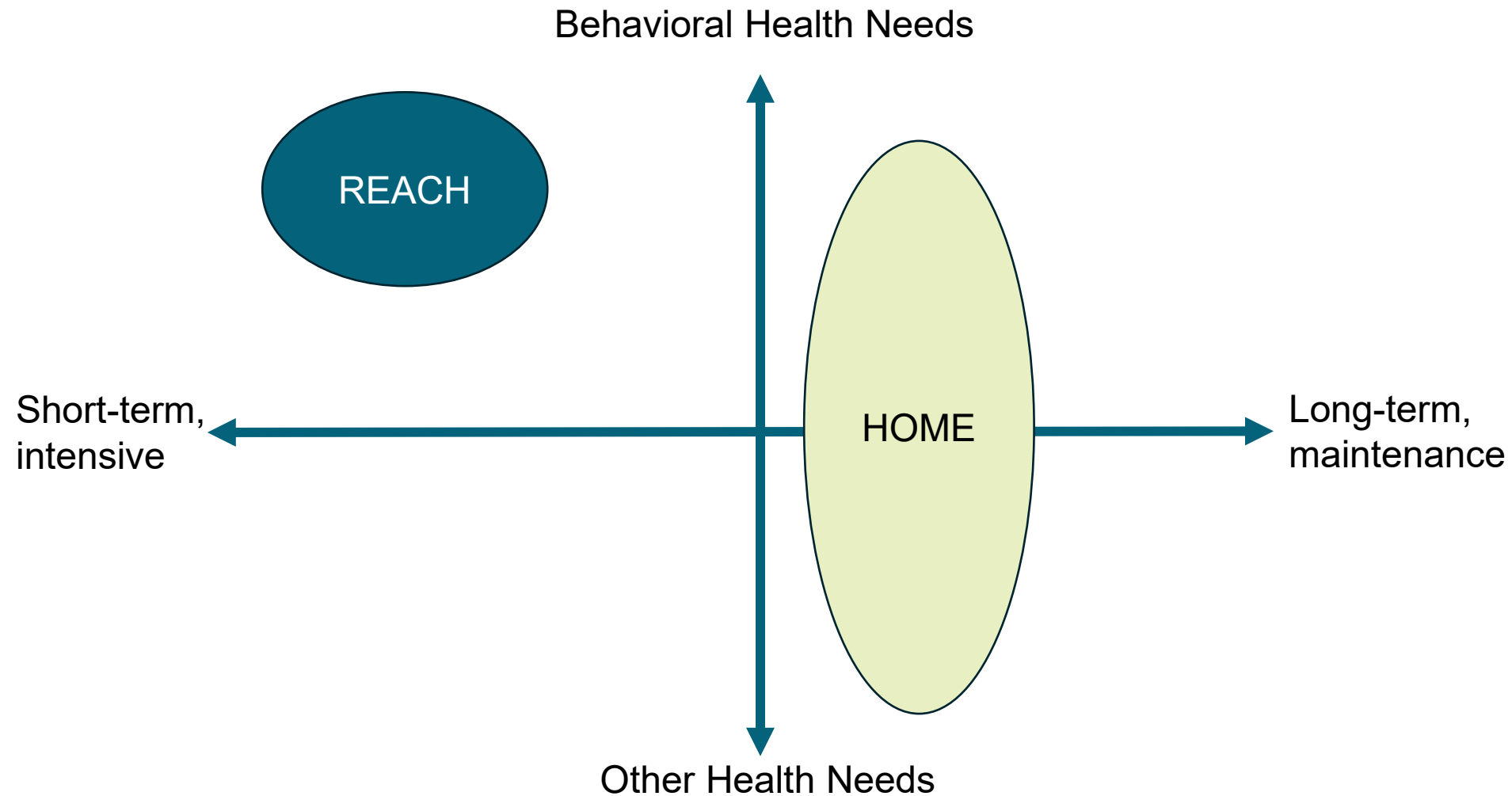


Health and  
Human Services

# Hope and Opportunity in Many Environments (HOME) Project

- ▶ The HOME project is a statewide initiative to transform Iowa's Medicaid-funded Home and Community-Based Services (HCBS) system.
- ▶ The goals of HOME are to enhance services, support people to remain in their communities with their loved ones and make it easier for people to access the supports they need.

# Intention of HOME and REACH



# Program Comparison: Entry and Transition

## REACH

- **Eligibility:** CANS assessment determines eligibility; addtl eligibility criteria under consideration
- **No waitlist**
- **Transition:** Goals are met and youth transition to state plan services

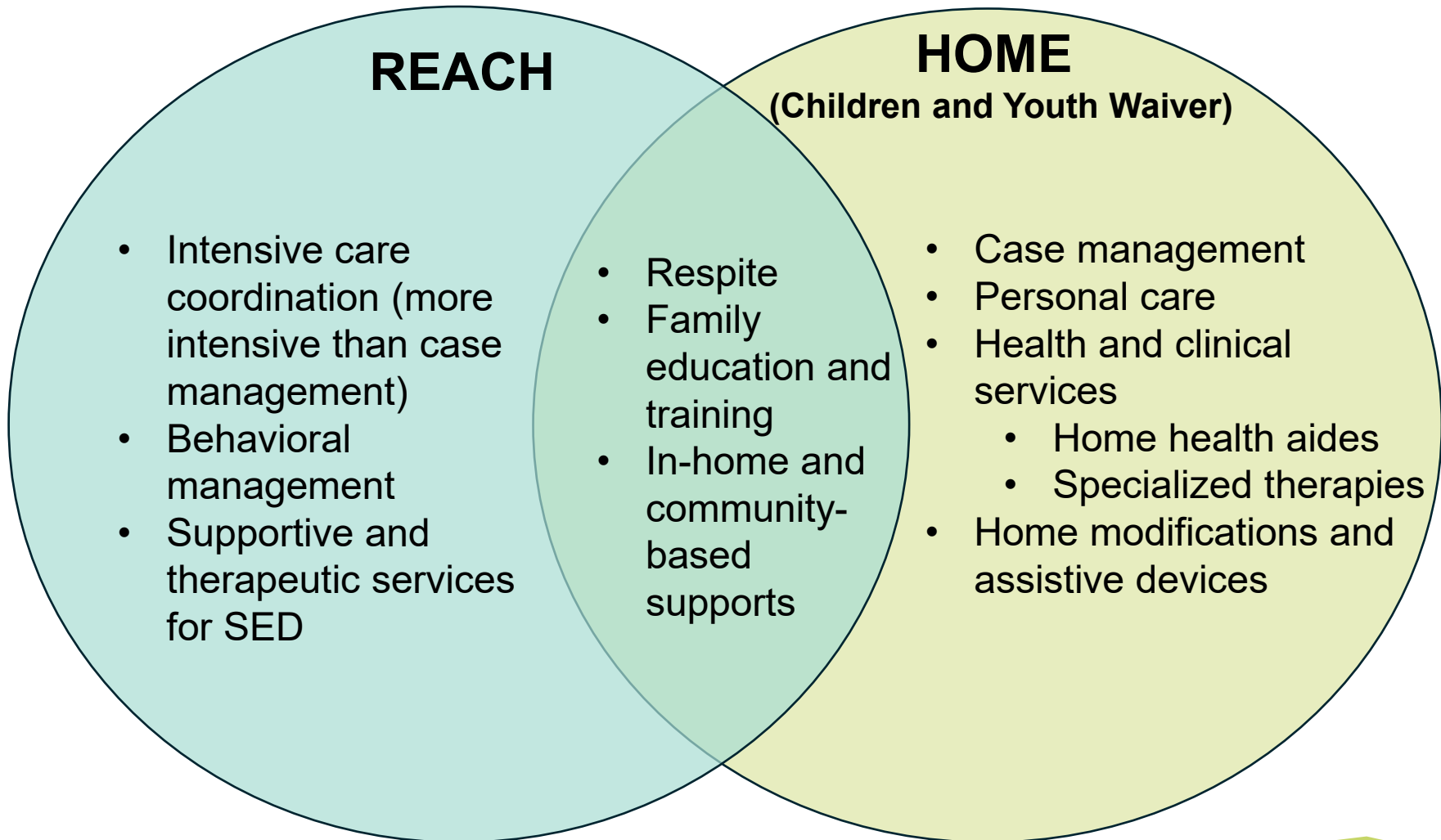
- **Eligibility:** Medicaid-enrolled youth under age 21 and SED diagnosis

## HOME

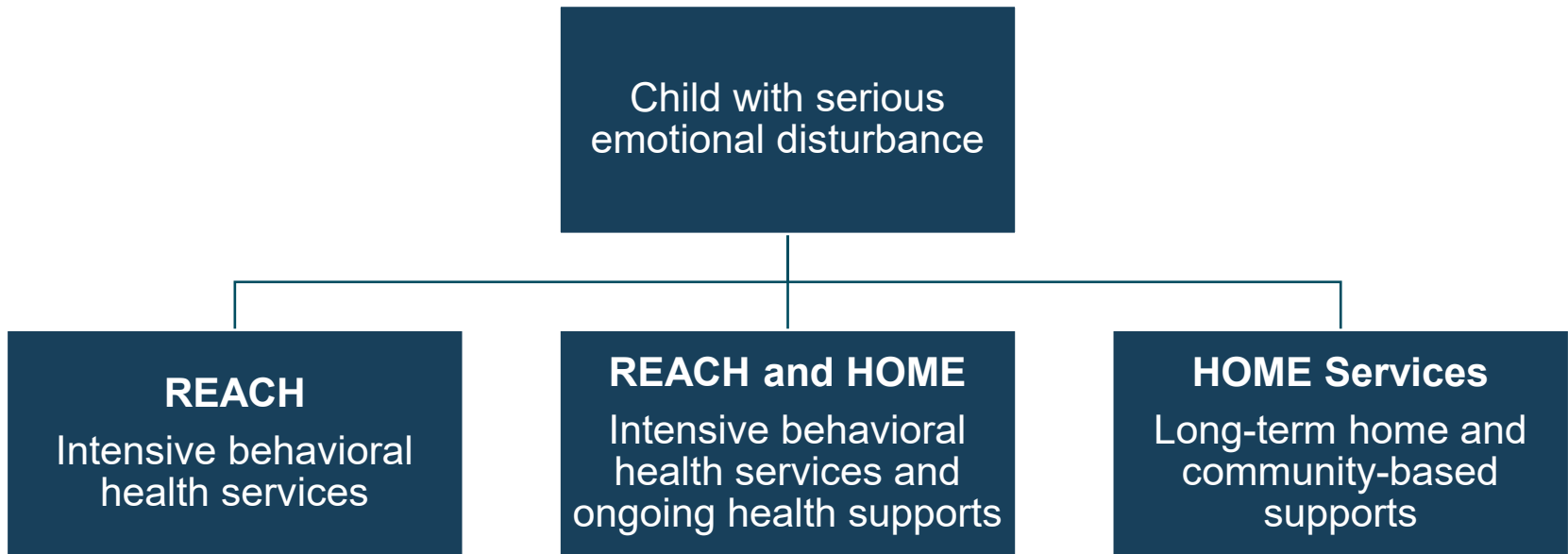
(Children and Youth Waiver)

- **Eligibility:** interRAI assessment determines level of care
- **Waitlist;** reserved capacity slots for youth leaving institutional care
- **Transition:** Youth age out and transition to Adults with Disabilities waiver (*SED diagnosis not qualifying*)

# Program Comparison: Services



# Members Enroll in One or Both Programs



What experiences might indicate that youth are well suited for both programs, or would see more benefits from just one program?

# Care Pathway for Members Considering Both Programs

## Referral

Member referred to HOME or REACH

What information do members need to understand their options and decide among programs?

## Eligibility

- CANS assessment
- interRAI assessment

We acknowledge that eligibility pathways may feel confusing or duplicative. What information might help members understand differences in the criteria for these programs?

## Services

### REACH

- Care planning team meets
- Care plan and goals are created
- Youth receives behavioral supports and services

### HOME

- Case manager coordinates overall services

How can we ensure members involved in both programs know who to call for help?

## Transition

REACH goals met and youth routed to Medicaid services

# Discussion

- ▶ What kinds of challenges have you faced, or expect that members could face, when accessing multiple Medicaid programs at once?
  
- ▶ Imagine you have a child enrolled in both HOME and REACH. What activities might feel duplicative, confusing, or burdensome?
  - Assessment
  - Care coordination
  - Care planning
  - Other situations?

# Discussion (cont.)

- ▶ Think about a time when you navigated a system with multiple providers. What worked well and what didn't?
- ▶ Based on your experience, are there certain resources that could help families navigate enrollment in both HOME and REACH?
  - Designated leads
  - Provider communication pathways
  - Public informational materials on the programs
  - Other?



# Public Comment

---



Health and  
Human Services