

Community-Based Services Evaluation

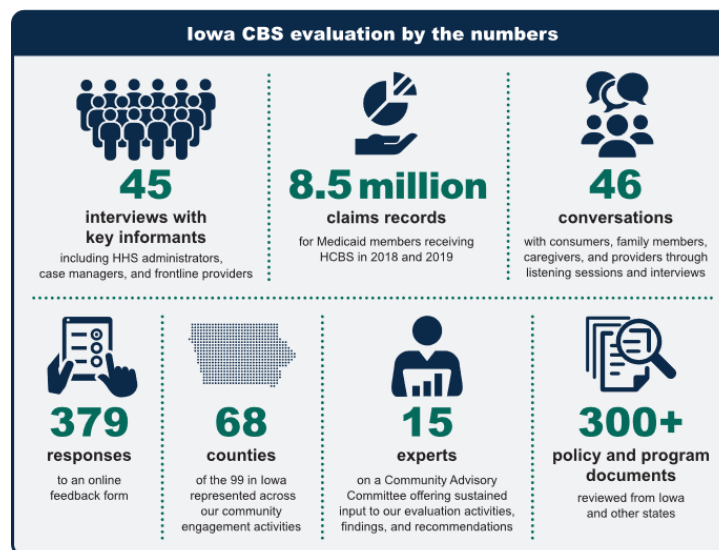
HOW DID THE TEAM FOCUS THE EVALUATION?

Leading up to the [Final Evaluation Report](#), Iowa HHS focused the evaluation several ways. The team:

1. Identified guiding principles for the work, which suggest community-based services (CBS) in Iowa should be:
 - Equitable, so consumers can access services in line with their needs, regardless of demographic group or location.
 - High-quality and person-centered, enabling consumers to live where they want and choose their care.
 - Proven valuable—for example, by reducing inefficient spending.
 - Coordinated and transparent, using a “No Wrong Door” model and conflict-free case management.
 - Effective and accountable, with roles clearly defined throughout the system.
2. Analyzed programs and policies in the state about community-based behavioral health, disability and aging services, including Medicaid waivers.
3. Hosted discussions with professionals delivering community-based behavioral health, disability and aging services, ranging from Medicaid administrators to front-line staff.
4. Analyzed data about Medicaid waiting lists, enrollment and service use.
5. Reviewed system redesigns in states like Iowa to understand the opportunities and challenges of future recommendations.
6. Collected input from Invested Iowans across the state through listening sessions, an online feedback form and one-on-one interviews.

WHAT DID THE TEAM ACHIEVE IN YEAR 1?

Three work stream teams achieved the following:



WHAT DID THE TEAM FIND?

This team effort resulted in the Final Evaluation Report, [Recommendations for Strengthening Iowa's Community-Based Services System](#), which describes findings and recommends next steps to improve service delivery throughout the state.

For a summary of the findings and recommendations, see Chapters I and II of the report, which describe three key recommendations for Iowa HHS:

1. Implement streamlined screening and improved processes to better align services with people's needs.
2. Align CBS, including Medicaid home- and community-based services (HCBS) waivers, to the needs of Iowans.
3. Maximize access to Medicaid HCBS and other CBS supports for people who need long-term services and supports.