




# COMMUNITY-BASED SERVICES PROJECT TRANSFORMATION PLAN BRIEF

## 2022

Last year, we conducted a systemwide assessment of community-based behavioral health, disability and aging services across the state. This resulted in finding the next steps to improve service delivery throughout the state.

### Feedback Results

-  **Implement** streamlined screening and improved processes to better align services with people's needs.
-  **Align** community-based services (CBS), including Medicaid home and community-based services (HCBS) waivers, to the needs of Iowans.
-  **Maximize** access to Medicaid HCBS and other CBS supports for people who need long-term services and support.

## 2023

This year, we begin with the Transformation Plan for transforming the system statewide.

### Transformation Plan



**Follow**  
CBSE guiding principles



**Create** strategies for community engagement



**Build**  
new goals and activities



**Present**  
Iowa HHS's 2023 partnered events

## OUR WORK STREAMS

Three work stream teams will support implementation plan with the CBSE guiding principles.

### Waitlist management



Better identify needs and re-prioritize how people wait for CBS.

### Waiver Redesign

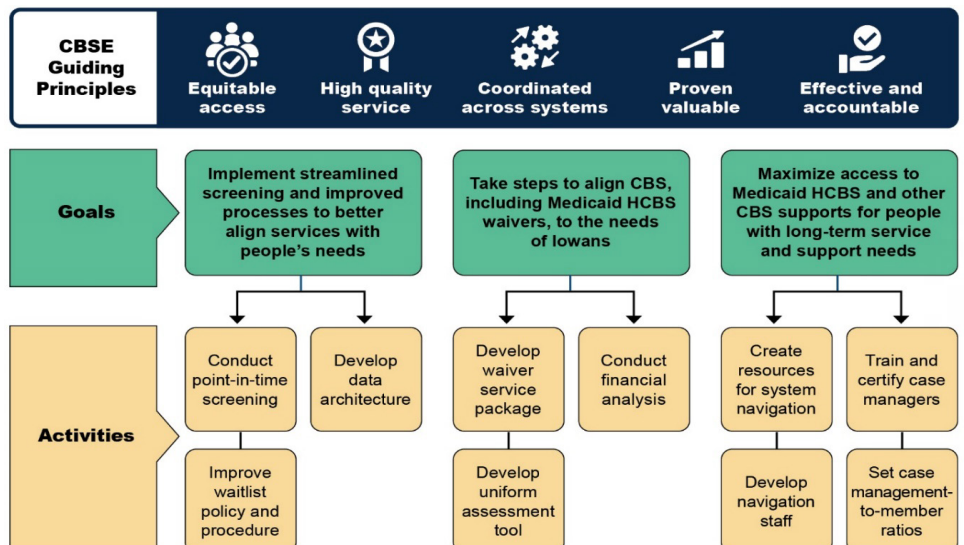


Re-imagines Medicaid HCBS waivers so that people can stay in the community.

### Case management



Support Iowa HHS by improving how people find and learn about CBS.





## OUR PROGRESS METHOD

The team will continue to gather feedback about implementation and address as needed in a continuous feedback loop.

### Exploration

Collect feedback, gather ideas and co-create solutions through participation groups and other engagement activities.

### Installation

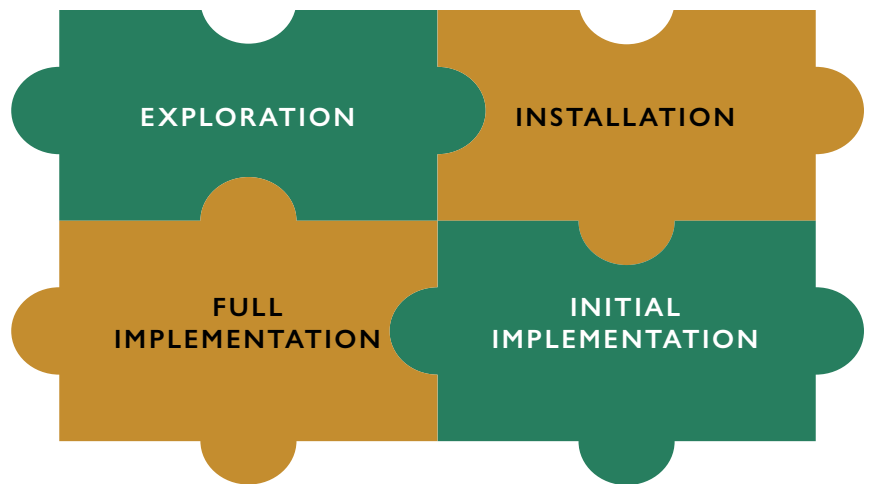
Make decisions based on findings from the exploration phase. Publicly announce next steps.

### Initial Implementation

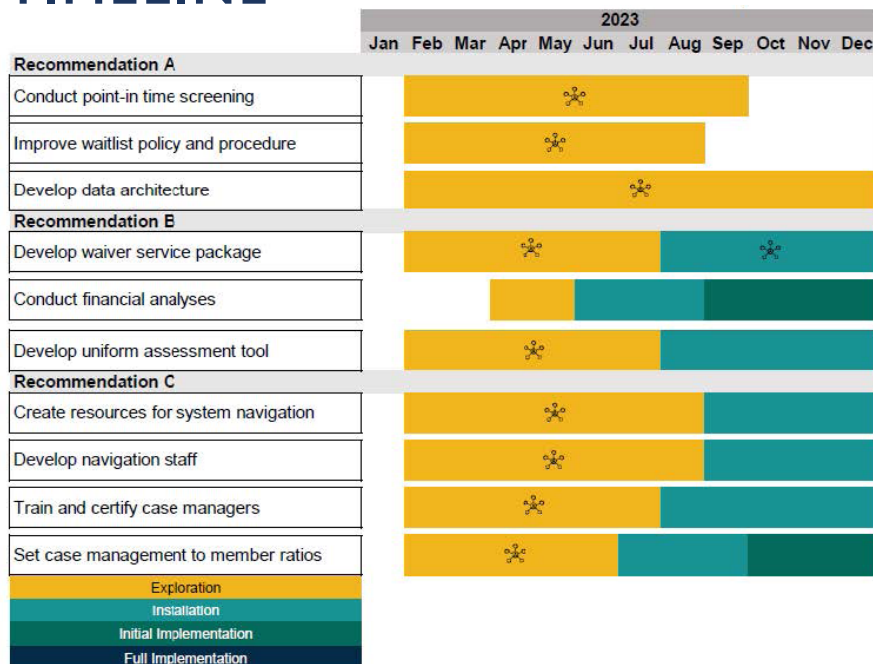
Collect feedback on initial implementation to seek perspectives on opportunities for improvement or changes.

### Full Implementation

Communicate about implementation progress to date and impact of the activity.



## TIMELINE



## FIND OUT MORE



Follow us for progress updates, upcoming activities and more!  
<https://hhs.iowa.gov/CBSE>

 [facebook.com/iamedicaid](https://facebook.com/iamedicaid)

 [twitter.com/iamedicaid](https://twitter.com/iamedicaid)

### Get involved!

Review details about our upcoming feedback sessions and submit an interest form.

### Contact us

Mathematica-Harkin team  
[iowahcbs@mathematica-mpr.com](mailto:iowahcbs@mathematica-mpr.com)