

QIO - Habilitation Needs Based Assessment - State Plan Assessment

Purpose:

The assessment provides an objective and accurate evaluation of the member's risks and needs to determine medical necessity and appropriateness of services.

Identification of Roles:

Targeted case manager (TCM), Integrated Health Home care coordinators (IHHCC), or managed care organization (MCO) staff complete the assessment with the individual and others as appropriate.

Review coordinator (RC) - reviews submitted information and determines non-financial eligibility for the services.

Performance Standards:

- Initial assessment reviews and service plan reviews will be completed for 95% of members within 2 business days and 100% within 5 business days.
- Reassessments will be completed for 95% of members within 5 business days and 100% within 10 business days.
- Complete determination of need initial assessment within 2 business days of notification in data systems.
- Complete determination of need review within 5 business days of notification in data systems.
- Approve service plan within 2 business days of notification in data systems.

Path of Business Procedure:

(See Attachment 1)

Step 1: Request for eligibility review is received via certification form, Core Standardized Assessment (CSA), or IoWANS milestone. Assessments are conducted to establish medical necessity and authorize a preliminary care plan. RC reviews the assessment information and determines eligibility for the following services:

- Case management,
- Home-based Habilitation,
- Day Habilitation,
- Prevocational Habilitation,

- Supported employment Habilitation.

Step 2: RC will verify MCO/FFS status in MMIS. RC will determine if there is adequate documentation to begin the review. If insufficient, RC will request additional information. If additional documentation is not received within the appropriate timeframe, a technical denial will be issued.

Step 3: If RC is unable to approve services requested, the case will be sent to PR (see Attachment 2).

Step 4: Once the review determination has been reached, the RC will complete IoWANS milestone. If denied by PR, the assessment will be entered into IoWANS, where the notice of decision will be generated and sent by the CM.

Forms/Reports:

NA

RFP Reference:

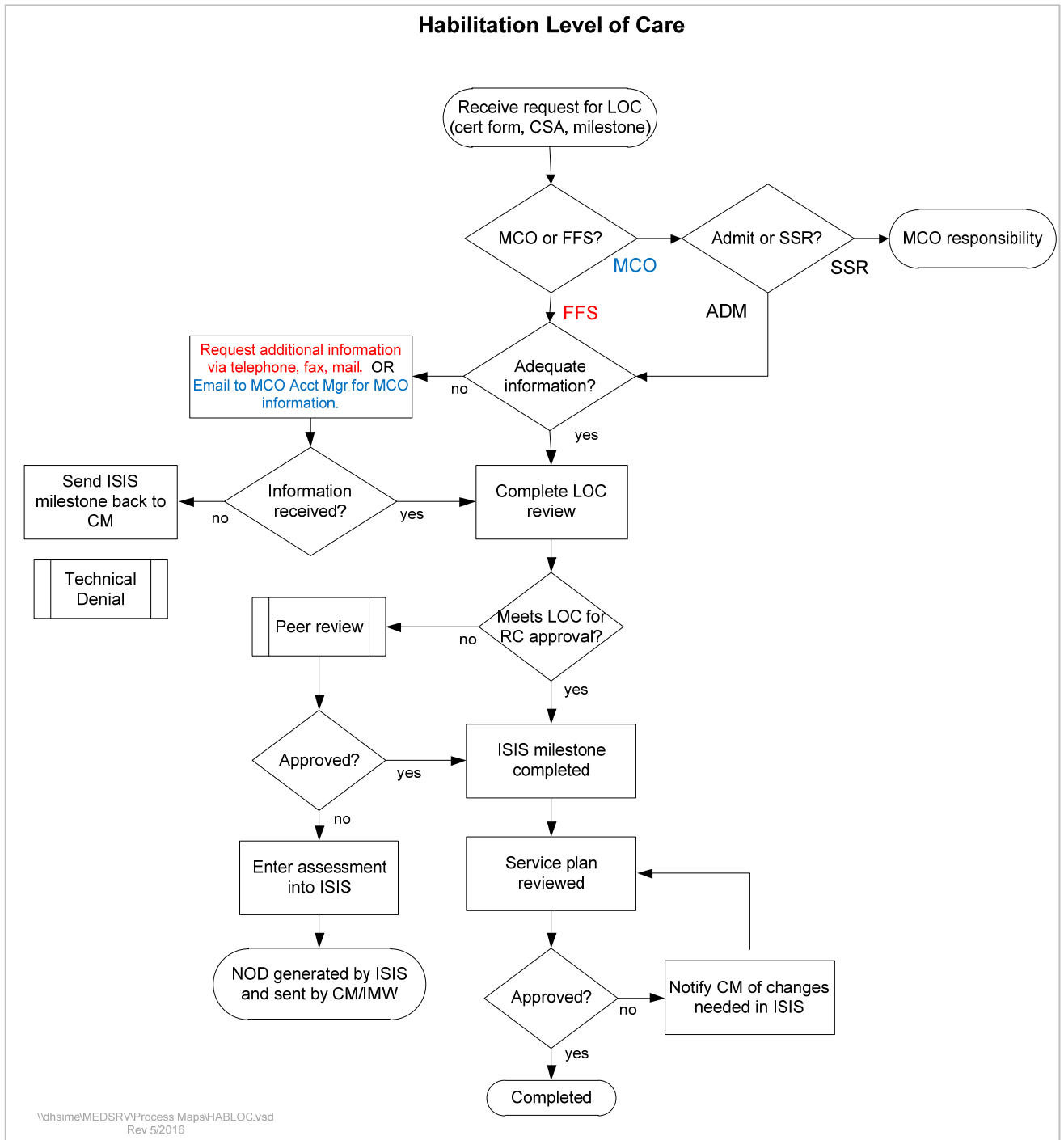
1.3.1.3.B.2.a.iii-iv

Interfaces:

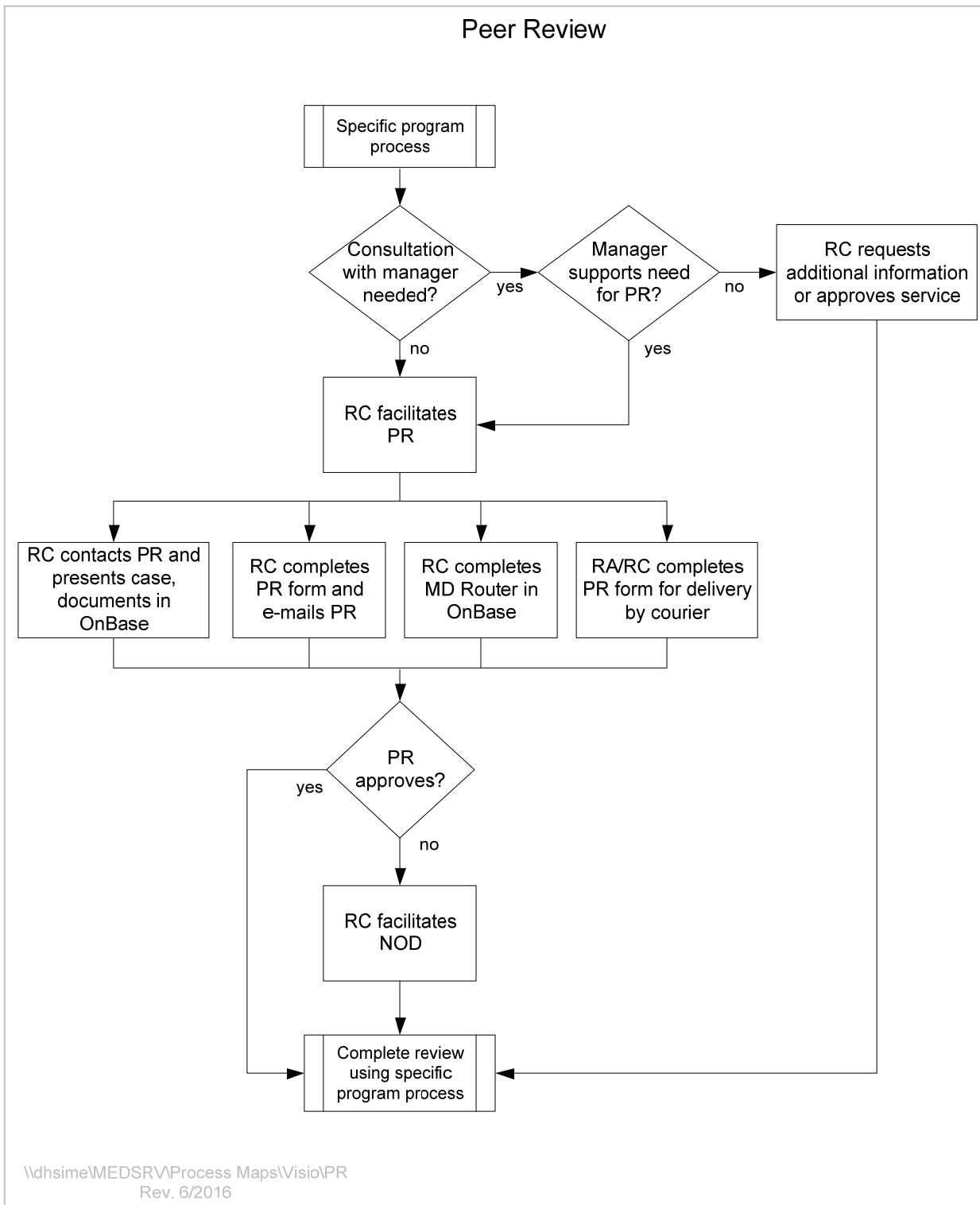
MMIS, IoWANS, OnBase

Attachments:

Attachment 1: Habilitation Review flowchart



Attachment 2: Peer Review flowchart



Attachment 3: ALJ Review flowchart

