

## Purpose

This tool should be used to determine HHS' recommendation for the Family Interaction Plan which includes supervision level, interaction location, and interaction frequency and length.

## Who is the tool used for?

This tool should be completed for each parent-child relationship. A separate tool may need to be completed for each parent depending on the family situation.

## Who completes the tool?

The CPW and/or SWCM in collaboration with the family's team.

## When is the tool completed?

Prior to completing the Family Interaction Plan. Family interactions should begin as soon as possible after a child's removal from parental custody. The interaction plan should be reviewed monthly to determine progress, update goals, and determine if it is appropriate to consider changes in supervision, location, and setting.

## How is the plan documented?

In the Family Interaction Plan- form 470-5148

**Use this process to determine recommendations for the family interaction plan.**

## 1 INTERACTION SUPERVISION

Use the decision tree on reverse side to recommend the interaction supervision level for each identified parent-child relationship. Document the supervision level on the Family Interaction Plan. If supervision is required, document who is responsible to provide supervision during interaction. Consideration should be given based on the safety concerns and the developmental needs of the child.

### Recommendations:

#### Unsupervised Interaction

No interaction supervisor is required.

#### Semi-Supervised

Supervisor should make multiple drop-ins during the interaction.

#### Relaxed Supervision

Interaction does not need to be fully supervised. (ex. Supervisor is in the home, but does not necessarily need to be in the same room during the interaction).

#### Supervised by Natural Supports

Relatives, kin/fictive kin, or foster parents should be explored as interaction supervisors until it is safe and appropriate for the family to have unsupervised interactions.

#### Professionally Supervised

Contracted provider, HHS worker or other child welfare professionals are recommended to supervise the interaction to address behavioral, developmental, relational, or safety needs in interactions until it is safe and appropriate to move to a less restrictive interaction supervision level. (ex. Unsupervised or supervised by relative, kin/fictive kin, or foster parents).

#### Therapeutic Supervised

Interactions supervised by therapist or other child welfare professional specifically trained to address the specific needs of the parent-child relationship.

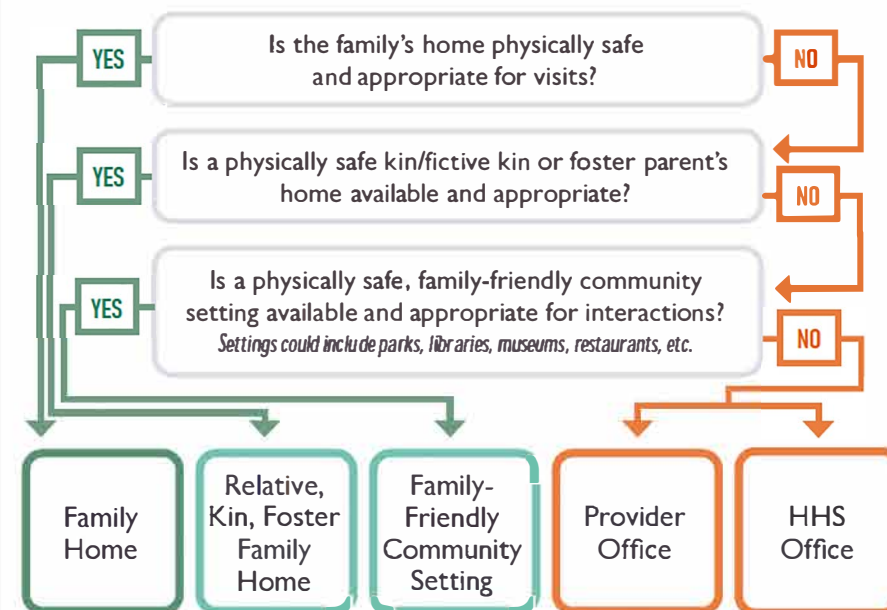
#### NO Interactions

Discuss if interactions should occur.

## 2 INTERACTION LOCATION

Family Interaction should occur in the least restrictive, most homelike setting that allows for natural interaction while appropriately meeting the child's needs for safety. Every opportunity for family interaction needs to be considered including doctor visits, school activities, meetings, and other functions. Generally, the parental, relative/kin, foster family home will provide the best environment for interactions. Decisions about interaction location should be made in partnership with the family. When safety is an issue, a more secure setting should be chosen, and a safety plan developed for the interactions to continue.

Use the decision tree below to recommend interaction location:



## 3 FREQUENCY & LENGTH OF INTERACTION

Interactions should be frequent and for as long as possible, unless harmful to participants and/or requested otherwise. Decisions should be made in partnership with the family and documented on the interaction plan. In determining how often and how long interactions should be, consider the following.

### DEVELOPMENTAL AGE OF THE CHILDREN

Infant/toddler (0-5 y/o)	Shorter, more frequent	3-4 times per week
Younger, school-aged (6-12 y/o)	Longer, more frequent	2-3 times per week
Adolescent (13-17 y/o)	Longer, less frequent	1-2 times per week

# Interaction Supervision Decision Tree

Provide explanations for decisions on questions A-F on the Family Interaction Plan, Form 470-5148.

