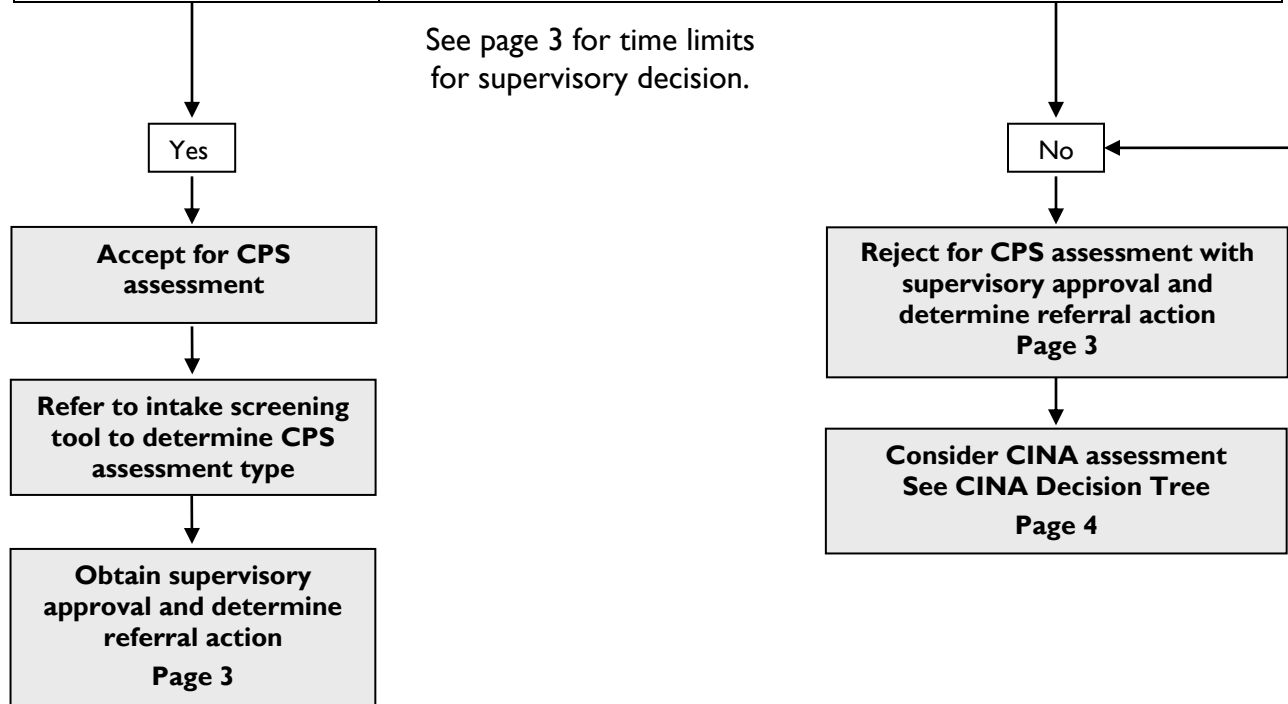
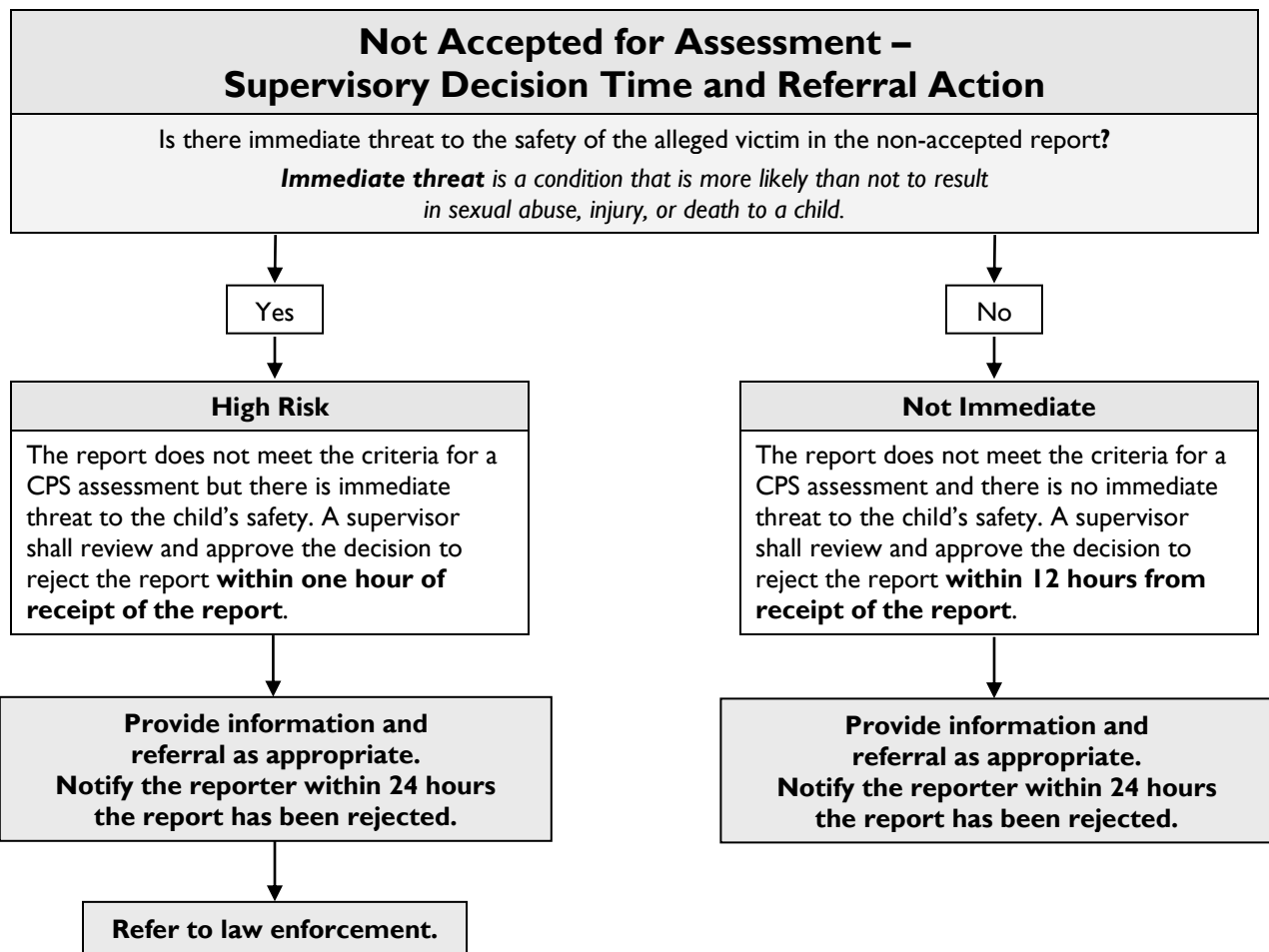
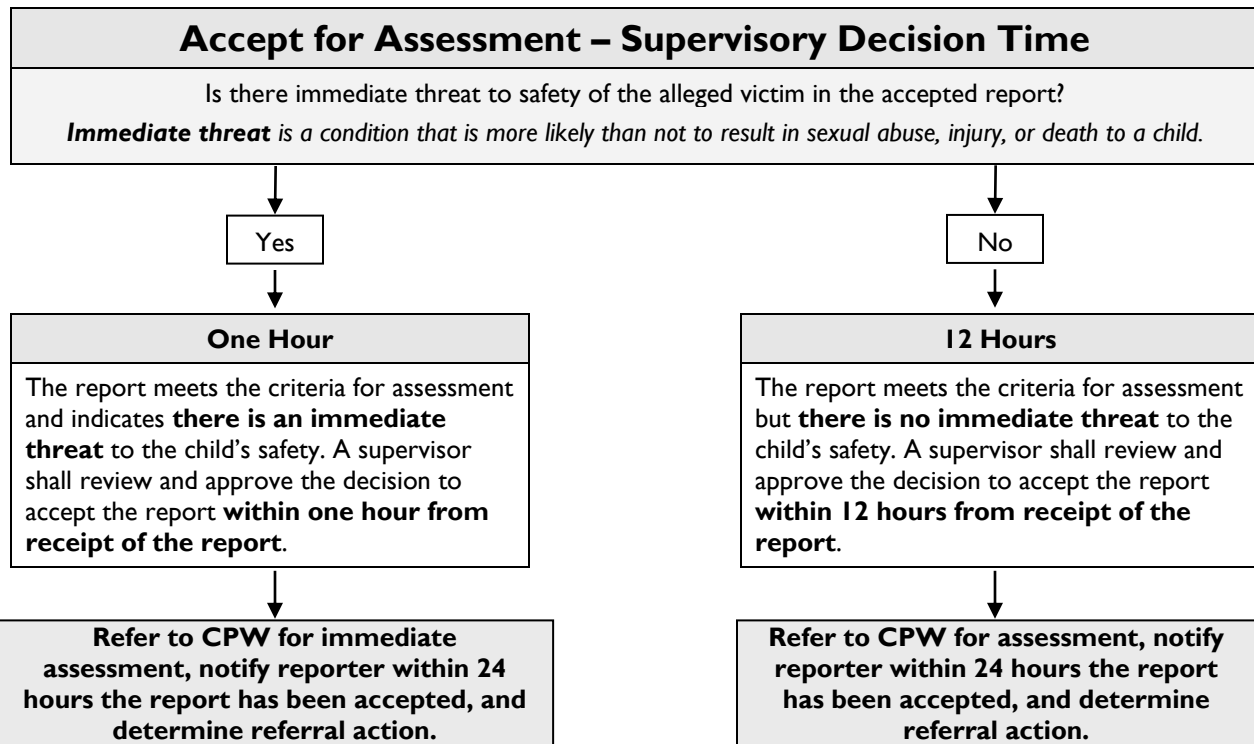


Allows Access to Obscene Material	Knowingly allowing access to, disseminating, or exhibiting obscene material to a child
Child Sex Trafficking	Recruitment, harboring, transportation, provision, obtaining, patronizing, or soliciting a child for commercial sexual activity

See page 3 for time limits for supervisory decision.





CINA Criteria - Does the child's need meet CINA criteria?
Child is in need of medical treatment to cure or alleviate, or prevent serious physical injury or illness and child's parent, guardian or custodian is unwilling or unable to provide such treatment
Child has been the subject of or a party to sexual activities for hire or posed for live display or for photographic or other means pictorial reproduction or display which is designed to appeal to the prurient interest and is patently offensive; and taken as a whole, lacks serious literary, scientific, political or artistic value
Child is without a parent, guardian or other custodian
Child's parent, guardian or custodian for good cause desires to be relieved of the child's care and custody
Child for good cause desires to have the child's parents relieved of the child's care and custody
Child is in need of treatment to cure or alleviate chemical dependency and whose parent, guardian or custodian is unwilling or unable to provide such treatment
Child is not receiving adequate care as a result of parent's or guardian's or custodian's mental capacity or condition, imprisonment, or drug or alcohol abuse
Child is in a household where an adult member (who is not a parent, guardian, or custodian) unlawfully uses, possesses, manufactures, cultivates, or distributes a dangerous substance in the presence of the child or allows the use, possession, manufacture, cultivation, or distribution by another person in the child's presence or possesses a product in the presence of a child with the intent of using it in the manufacture of a dangerous substance or unlawful use, possession, manufacture, cultivation, or distribution of amphetamine, methamphetamine, or any chemicals that poses risk of explosion, fire, or other danger to the life or health of a person in a child's home, on the premises, or in a motor vehicle located on the premises.

