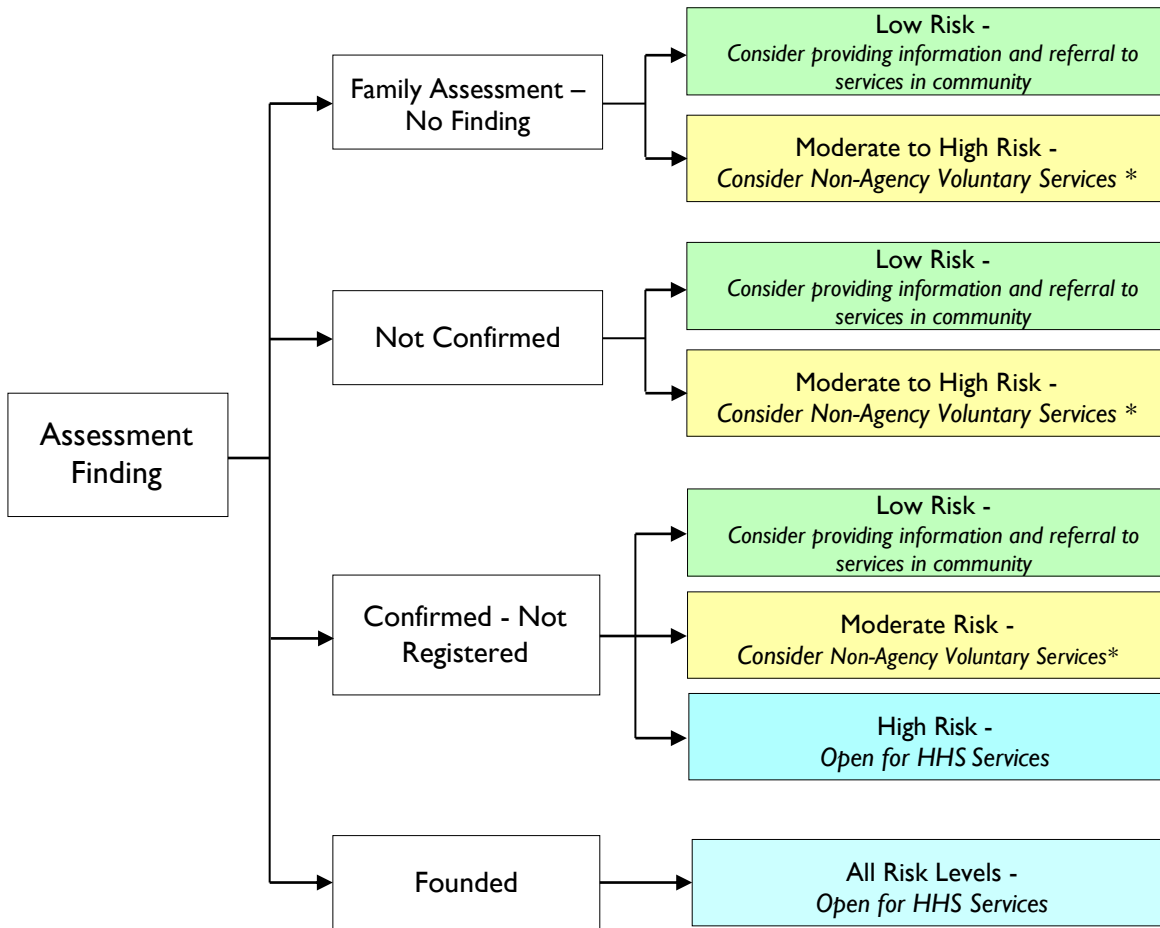


Iowa Department of Health and Human Services
CPS Assessment - Case Disposition Decision Tree



<p>* Families who meet the eligibility requirements may not be referred to Non-Agency Voluntary Services if any of the following exist:</p>	
<ul style="list-style-type: none"> Any child in the household has an open child welfare service case with the department. Any child in the household has been adjudicated a Child In Need of Assistance (CINA), a CINA petition was filed or is pending, or a child has been adjudicated delinquent, has an informal adjustment agreement, or has an open case with Juvenile Court Services. 	<ul style="list-style-type: none"> The abuse occurred in an out of home setting. The parent is not willing to accept Non-Agency Voluntary Services. The family is already engaged in Non-Agency Voluntary Services. The family does not need additional supports beyond current formal/informal systems. The family resides out of state.