

# Community Health Needs Assessment (CHNA) Report Taylor & Adams Counties (Public Health)

Revised  
October 2023



For additional information about this report:

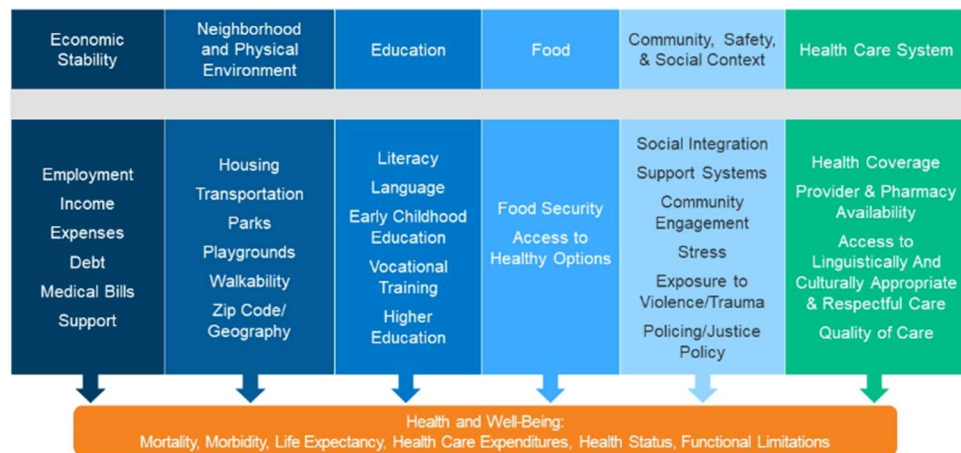
**CONTACT:**

Name: Crystal Drake  
 Organization: Taylor County Public Health  
 Phone: 712-523-3405  
 Email: [crystal.drake@taylorcountyhealth.com](mailto:crystal.drake@taylorcountyhealth.com)

**Community Survey:**

A community survey was conducted across Taylor and Adams Counties to assess the needs of each person who lives, works, or is active in either county. The feedback helped us prioritize the health needs and create our five-year plan for improving the health and well-being of residents in our communities. We focused on the health that expands beyond physical health. We asked participants to remember that a wide variety of factors determines the health of a person and a community. These factors include economic stability, neighborhood/physical environment, education, food, community safety/social context, and the health care system. These are commonly referred to as the Social Determinants of Health. We included the following chart that includes examples of each area.

## Social Determinants of Health



The community survey was sent out to an email list-serv group that our agency utilized during the pandemic. It includes faith communities, businesses, county and city government employees/officials, community organization leaders, healthcare clinic administrators and providers, and numerous residents. We shared the survey on our social media pages and website. We worked with the local chamber and economic development offices to share in their monthly newsletters. Most of the surveys were done virtually accessing through a QR code. However, we used paper copies with our home health patients and at 2 large health fairs in each county. We sought responses from individuals from June – October 2023. Approximately 220 people responded to the survey.

This entire process was completed by a team that met as a group regularly. Individuals include:

Taylor County Board of Health:

Michael Schweitzer, RPh  
Stephen Gruba, MD  
Jenn Miller, RN  
Rodney Gold, DDS  
Diane Ware

Adams County Board of Health:

Maria Fuller, DDS  
Stephen Gruba, MD  
Diane Shipley, RN  
Lindsay Hogan, RN  
Rosie Bissell, RN

Taylor County Public Health:

Crystal Drake, Administrator  
Sandra Boswell, Clinical Manager  
Sarah Guillatt, Maternal Hlth/Grant Coord.

The documents included in our CHA CHIP project will be made public on the Taylor and Adams County website.

## Community Health Needs Assessment Details

### Priority 1: Access to Quality Mental Health Care

**Data/Rationale:** Access to quality mental health care was identified as the second most important item that needs more action in our survey.

**Is this issue addressed in an improvement plan?** Yes

### Priority 2: Mental Health

**Data/Rationale:** Mental health care was identified as the second most important item that needs more action in our survey.

**Is this issue addressed in an improvement plan?** Yes

### Priority 3: Quality, Affordable Housing

**Data/Rationale:** Quality, affordable housing was identified as the third important item that needs more action in our survey.

**Is this issue addressed in an improvement plan?** No. County/City economic development entities are currently addressing this need.

### Priority 4: Access to Quality, Affordable Healthcare

**Data/Rationale:** Access to quality, affordable healthcare was identified as a top item that needs more action in our survey.

**Is this issue addressed in an improvement plan?** Yes

# Community Health Needs Assessment Details

## Priority 5: Quality, Affordable Childcare

**Data/Rationale:** Quality, affordable childcare was identified as a top item that needs more action in our survey.

**Is this issue addressed in an improvement plan?** No, existing daycare centers are collaborating with local, regional, and state resources to address this need.

## Priority 6: Access to Quality Dental Care

**Data/Rationale:** Access to quality, affordable dental care was identified as a top item that needs more action in our survey.

**Is this issue addressed in an improvement plan?** Yes