

# COMMUNITY HEALTH ASSESSMENT



2023

Hardin County, Iowa

# Community Health Assessment

## HARDIN COUNTY, IOWA

### CONTENTS

<b>EXECUTIVE SUMMARY .....</b>	<b>6</b>
2023 Community Health Assessment and Improvement Plan .....	6
Community Health Assessment Strengths.....	7
Hardin County Public Health Department.....	7
Primary Service Area/Community Health Strengths .....	7
Town Hall - Community Health Opportunities Identified .....	7
Town Hall Outcomes - Community Health Opportunities .....	7
Community Health Assessment Survey - General Feedback .....	7
Community Health Assessment Survey - Results of Opportunities .....	9
CHA Survey – Needs for Health Concerns .....	9
CHA Survey – Program Needs for Health Concerns (above) .....	10
Iowa Health Rankings: Hardin County Public Health .....	10
<b>METHODOLOGY .....</b>	<b>12</b>
Scope and Purpose.....	12
Assessing Community Health Needs .....	12
Process to Complete a CHA .....	12
Steps in Process for CHA including Timelines / Milestones .....	13
Model for Needs Assessment Process and Steps.....	14
closely aligned to above stages of the process.....	14
Community Served / Profile Description .....	14
Hardin County, Iowa Community Map.....	14
Portion of Hardin County, Iowa for Needs Assessment - Specifics .....	15
Detailed Demographics – Hardin County, Iowa .....	16
Collaborating CHA Parties.....	16
Greenbelt Home Care and Hardin County Public Health .....	16
Pavelka’s Point Consulting, LLC – External Consulting Services .....	18
Community Health Assessment Process.....	18
Agreement/Contracting/Community Leadership (CHA Steps 1 – 3).....	18
Create the assessment, survey, and evaluation process (CHA Steps 4).....	19
Collect the Data (CHA Steps 5) .....	19
Community Press Release .....	19

Employee and Community Communications ..... 20

Analyze the Data (CHA Steps 5 continued) ..... 21

Town Hall Research Process (Engage & Prioritize with Stakeholders) ..... 21

Document and Define Priorities (CHA Steps 6) ..... 21

    Town Hall General Public Invite (letter)..... 21

    Town Hall Agenda ..... 22

    Town Hall PowerPoint Presentation ..... 22

    Town Hall Attending Key Stakeholders (Engagement and Prioritization) ..... 28

Town Hall Outcomes ..... 28

Community Strategy Formulation and Action Planning ..... 29

    Planning for Improvement Strategies (CHA Steps 7 & 8)..... 29

    Prior Assessment Action Plans ..... 32

    Evaluation of Progress on Key Priorities and Strategic Alignment (CHA Step 9) ..... 33

**COMMUNITY (SERVICE AREA) HEALTH STATUS ..... 33**

    Primary Research Findings ..... 33

        Replies by zip..... 33

        Overall Quality of Services In the Community (SERVICE AREA)..... 34

        Rating of Health Services ..... 34

        Causes of disease or disability in the community ..... 35

        Health needs by age..... 35

        Health services outside of the county ..... 36

        Improvement of Services ..... 37

        Three year Action Plan Improvements ..... 37

        Pressing issues for today’s improvements..... 38

        Rating of Services for community ..... 38

    Personal Health Needs: Survey Results ..... 40

        Personal Health Needs: Health Description..... 40

        Personal health needs: Social Determinants of health..... 40

        Personal Health needs: Overall health – 2 year comparison..... 41

        Personal health needs: Use of primary care provider ..... 41

        Personal health needs: Health practices ..... 41

        Personal Health Needs: Health Practices..... 41

    Primary Data (Survey) Demographics of Participants 2023..... 42

        Age ..... 42

        Gender ..... 42

        Identity ..... 42

        Household ..... 43

        Insurance..... 43

        Involvement in community ..... 44

Secondary Research Findings 2023.....	44
Overall state Health rankings.....	44
Demographic details: population age, gender, ethnic affiliation (1a) .....	45
Demographic details: population status (1b) .....	45
Economic details (2).....	46
Public schools health delivery (3a and 3b) .....	46
Maternal and Infant Health (4a and 4b) .....	47
Live births (4B) .....	47
Hospital Specific Details (5).....	48
Behavioral and Mental health Profile .....	48
Health Behaviors Profile (7A).....	49
Chronic Health Profile (7B) .....	49
Mortality Profiles (8) .....	49
Cause of Death .....	50
Preventative Health (County Health Rankings) .....	50
Uninsured Profiles (Source: Iowa Health Fact Book).....	51
Inventory of Community (Service Area) Health Partners .....	51
Community (Service Area) Resources – Inventory of Services .....	53
Inventory of Health Services – Hanson Family Health Center, MercyOne (Hospital) and Hardin County Public Health, Iowa .....	53
Providers Delivering Care – Hardin County, Iowa .....	56
Care Delivery .....	56
Service Directory .....	58
Emergency Numbers.....	58
Non-Emergency /Municipal Numbers (Hardin county, IOWA).....	58
Quick REference Phone guide .....	58
General Online Health Resources .....	59
Doctors and Dentists—General.....	59
Hospitals and Clinics—General.....	59
Doctors and Dentists—Specialists.....	59
Other Healthcare Providers.....	59
Hospitals and Clinics—Specialized .....	60
Other Healthcare Facilities and Services .....	60
<b>DATA DETAILS .....</b>	<b>56</b>
CHA Survey Detailed Survey, Findings (Primary Research) .....	56
Town Hall Meeting Outcomes (Primary Research).....	78
Top Priorities .....	78
Implementation of Priorities in Action Plan – listed prior in report. ....	78
<b>CONTACT INFORMATION AND QUESTIONS .....</b>	<b>78</b>

Hospital Contact.....78  
Consultant Contact .....78

## EXECUTIVE SUMMARY

### 2023 Community Health Assessment and Improvement Plan

Community Health Assessments are ongoing processes that systematically evaluate the health needs of the community to improve the health of the population. According to the Iowa Department of Health and Human Services (2023), with a more than 30-year history in Iowa, the Public Health Departments are vital to represent and promote local action for the protection and health of their communities. At least every five years, county and local departments are responsible for collecting, analyzing, prioritizing, and acting on behalf of their communities and documenting gap in the health conditions in which they serve (<https://hhs.iowa.gov/cha-chip>). The Community Health Improvement Plan is a strategic document that notes actions to improve such health conditions.

Federal requirements for nonprofit hospitals require some hospitals to conduct a Community Health Assessment every three years. After the passage of the Patient and Protection and Affordable Care Act of 2012, 501 (c)(3) health organizations were given four new tax requirements to begin in tax years after March 23<sup>rd</sup>, 2012 (Stall, 2012). It is best practice to have the local public health and other health organizations join forces in the collaborative effort and partnership. Both groups in the system will gain from the efforts and relationship. These groups share a common goal of a healthier community.

The benefits of a Community Health Assessment, for both health department and the community, were stated in the following methods:

1. Identify key community (service area) health concerns, perceptions, and resources, while creating opportunities for collaboration in delivery of services.
2. Find a mutual understanding of and analyze community (service area) health needs, then prioritize with implementation strategies.
3. Provides guidance to all health-related organizations for how they can align their services and community benefit programs to best meet needs.
4. Focus organization's efforts for improvement and structure for addressing social determinates of health in building a relationship between and among stakeholders. All stakeholders can then contribute to improving the health of the community.
5. Provides rationale for current and potential funders to support efforts to improve the health of the community.

Iowa Department of Health and Human Services. (2023). Community Health Assessments and Improvement Planning. <https://hhs.iowa.gov/cha-chip>

Stall, E. (2012). Community Health Assessment: 5 Phases to Compliance. Retrieved from <https://www.beckershospitalreview.com/legal-regulatory-issues/community-health-needs-assessment-5-phases-to-compliance.html>

## Community Health Assessment Strengths

Hardin County Public Health Department Primary Service Area/Community Health Strengths
Uninsured rate for county is low for adults and children
Security of housing through low ratings on “lack of place to stay,” lower than state average for housing cost and burden
Food access to healthy choices is higher than state average
Mammogram screening rate,
School funding is high for communities and rate of high school graduation rate high
Air pollution with particulate matter low rate for environmental air quality

## Town Hall - Community Health Opportunities Identified

Town Hall Outcomes - Community Health Opportunities
<b>1. Mental Health: Assess and support depth and breadth of services for Mental Health needs in the communities</b> Mental Health needs: increase providers, access, employment for providers, reimbursement shortage – barrier for services, community responses (example: EMT), and transportation to and from services in other communities.
<b>2. Substance Abuse: Reduce the concern for and presence of substance abuse related health/safety issues.</b> Drugs and substance use and presentation services/response. Ranking high in use of substances within the communities, health/safety concerns related to substance use, and decreased access to services.
<b>3. Childcare Services/ Access:</b> Investigate the options and opportunities with pediatric health and wellness services and access.
<b>4. Knowledge for Preventative Services:</b> Providing prevention services to underserved population and/or communities. Address the provision of hospital outreach services and distribution of information and knowledge about services in communities.
<b>5. Teen Health / Teen Health Services:</b> Assess and create plans for teen health / services and support in the communities including access and county wide efforts.
<b>6. Health Coalition for County:</b> Assessment for the need of community coalition with clear scope and plan for addressing health needs within the county.

## Community Health Assessment Survey - General Feedback

The following were general feedback sections from the Community Health Assessment Survey in which 72 community (service area) participants completed the survey either via paper or electronic formats. The details of the survey process can be found later in this report.

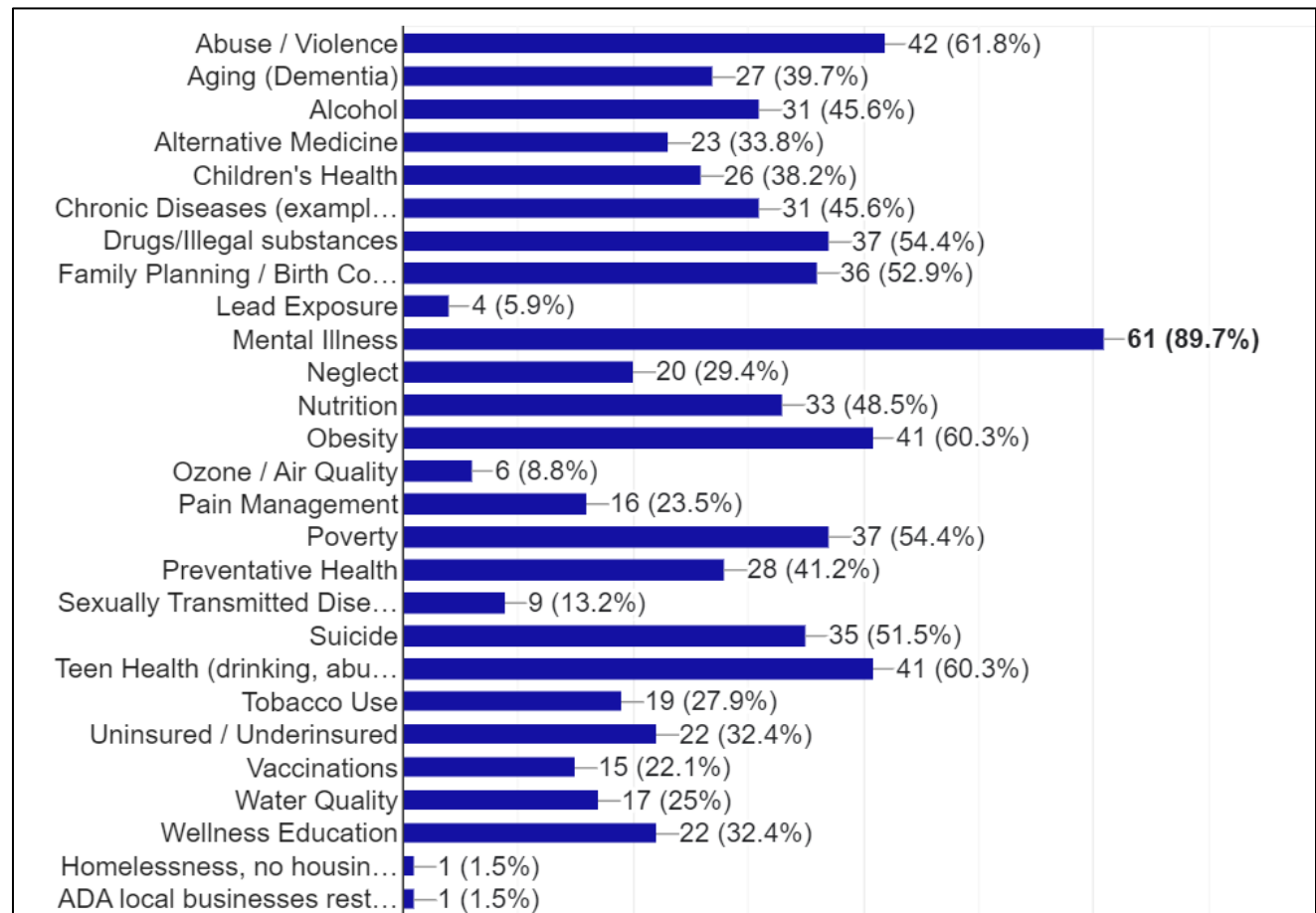
- The percent of Hardin County, Iowa survey participants who would rate the overall quality of care as either Very Good or Good is 61% and only 8% report as poor.
- Hardin County, Iowa survey participants are satisfied with the following public health services: emergency response services, home care services and general public health services. Participants are satisfied with the following community services: Chiropractor, Eye Doctor, Pharmacy, Hospice, and Dentists.
- Hardin County, Iowa survey participants are NOT satisfied or neutral with the following services: Mental Health, Teen health, family planning, child and young adult health services, school nursing services (neutral), and Nursing Home services (neutral).
- The percentage of participants who have received healthcare services outside of the community over the past two years has been at 76%. Of those that provided the type of service here are the services in which they traveled out of the community: Obstetrics and pre/post-natal services, Surgery, Specialty (Cardiac, Urology, Pulmonary, Orthopedics, Dermatology, Oncology, Neurology), sleep studies, and treatment for Chronic Diseases.
- Hardin County, Iowa participants believed there are opportunities for both health concerns and programs to combat the health concerns. The top perceptions of needs are listed in the following two tables as Results of Opportunities.



## Community Health Assessment Survey - Results of Opportunities

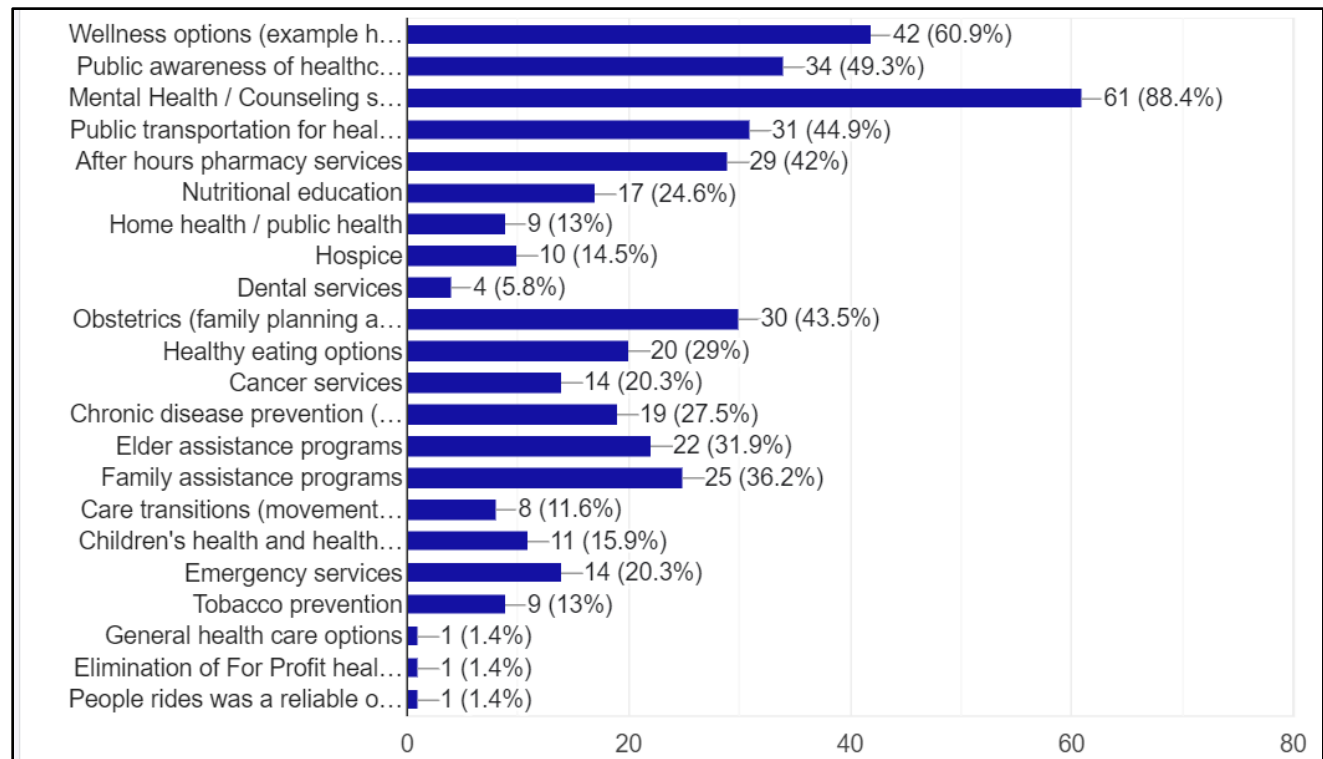
CHA Survey – Needs for Health Concerns	
1. Mental Health / Mental Illness (89.7%)	2. Abuse/Violence (61.8%)
3. Obesity (Chronic Disease) (60.3%)	4. Teen Health (60.3%)
5. Drugs / Illegal Substances (54.4%)	6. Poverty (54.4%)
7. Family Planning / Birth Control Services (52.9%)	8. Suicide (51.5%)
9. Nutrition (48.5%)	10. Alcohol Use and Abuse (45.6%)

All survey responses for “issues or concerns in communities”



CHA Survey – Program Needs for Health Concerns (above)	
1. Mental Health / Counseling (88.4%)	2. Wellness options (60.9%)
3. Public awareness of services (49.3%)	4. Public transportation for health (44.9%)
5. Obstetrics (family planning) (43.5%)	6. After hours pharmacy services (42%)
7. Family assistance programs (36.5%)	8. Elder assistance programs (31.9%)
9. Healthy eating options (29%)	10. Chronic disease prevention (27.5%)

Responses to “needed services in the communities.”



### Iowa Health Rankings: Hardin County Public Health

According to the 2023 Robert Wood Johnson County Health Rankings study, Hardin County, Iowa has the following comparisons. More details can be found in later sections of this report.

- Demographics and Age:** Hardin County, Iowa has a population of 16,567 residents as of 2023. The county population consists of 23.3% at or over the age of 65 years, an increase of 0.2% since 2017 and the state average is 17.1%. In the under 18 age group the rate is at 19.1%, down from 2017. The county is considered 52.7% rural (state 36.0% rural).

- **Diversity:** Hardin County, Iowa has 4.2% of the population that is considered non-proficient in English as a first language. The county has approximately 4.7% Hispanic population, and 1.6% African American. Females make up approximately 49.4% of the population.
- **Income:** Hardin County, Iowa median household income is \$58,100 (Iowa average of \$65,600) and unemployment is at 4.2% (Iowa 4.2%). Regarding the effects of income on the children in the county, 14% of the children live in poverty and 42% are eligible for free or reduced-price lunches (Iowa average of 41%).
- **Housing and Commutes:** The county is rated with 9% severe housing issues (Iowa overall at 12%). For employment, 23% of the population have long commutes to work and 82% drive alone (Iowa is at 21% and 79% respectively).
- **Education:** The percentage of high school graduation is at 93% and a strength in county rankings (Iowa 92%). For college education, Hardin County, Iowa has 61% of the population with some college (Iowa 70%).
- **Prenatal Care:** According to Iowa Health Fact Book, as of March 2023, 246 mothers started Prenatal care in the first trimester, for a ranking of 50th out of the 99 counties in Iowa. The number of mothers that smoked during pregnancy was 46, for an Iowa rank of 31st.
- **Primary Care and Hospital Services:** The ratio of population to primary care providers was slightly better than 2023 report with 3,320 residents to 1 provider (Iowa ratio of 1,360:1, 2017 ratio was 1,040:1). Preventable Hospital stays were below the Iowa number at 1,992 stays (Iowa 2,400).
- **Insured:** The uninsured adult population rate in Hardin County, Iowa is 6%, right at the Iowa rate of 6%, and has been at 6% for three years. The uninsured rate for children is 3%, again at the Iowa rate of 3%, and is also holding at 3% for the last three years.
- **Access:** Access to exercise opportunities is 85% (above the Iowa rate of 79%) and food insecurity is at 9% (Iowa rate is 8%). Mammography screenings are at 52% (Iowa rate is 47%), and in 2017 also 52%. Score of 98% of children at 2 years of age are up to date on complete series of vaccinations, compared to the 90.7% at the state (source: Iowa Department of Public Health).
- **Health Conditions:**
  - The “Frequent Mental Distress” rate for Hardin County, Iowa is 14%, with an Iowa rate of 14%. According to the CDC, 7.6% of Americans over the age of 12, had depression and living at or below the poverty level people were 2.5 times more likely to have depression (source: <https://www.cdc.gov/nchs/data/databriefs/db172.htm>).
  - Morbidity and Mortality rates: As of June 2022 premature deaths for Hardin County were up to 380/100,000 residents up from 2018 was 353/100,000 residents.
  - Diabetes prevalence is at a rate of 9% (at Iowa’s rate of 9%).
  - Adult Obesity rates are at the Iowa rate of 39%, Iowa rate is 37%.
  - Adult smoking is 18%, one percent above the Iowa rate.
  - Physical inactivity rate is 24%, however 1% higher than Iowa’s rate. The Access to exercise opportunities is very high at 85%, with the Iowa rate of 79%.

- The percentage of alcohol impaired driving deaths in Hardin County, Iowa is 21%, lower than the Iowa percentage of 27%. Excessive drinking percentages were also below the Iowa rate, at 23% and 25% respectively.

## METHODOLOGY

### Scope and Purpose

The Iowa Department of Health and Human Services requires that local health departments assess and plan for the needs of the community every five years. The assessment should include key stakeholders in the community including residents and other health providers. The assessment should evaluate the needs of the communities in which is served, paying attention to the special needs of populations that may be currently underserved. The Public Health Department should provide both primary and secondary data to the key stakeholders, assess the community, prioritize, and create a five-year plan for improvement. These key steps are outlined below, and more information found at <https://hhs.iowa.gov/cha-chip/guide-new>.

The Federal Patient Protection and Affordable Care Act requires that each registered 501(c)3 hospitals to conduct a Community Health Assessment (CHA) at least one every three years, share the assessment results with the community, and adopt a strategy to meet the health needs of the community (service area). The IRS Notice 2011-52 can be found at the following link and was followed for the purposes of this process, assessment, and report. <https://www.irs.gov/charities-non-profits/community-health-needs-assessment-for-charitable-hospital-organizations-section-501r3>

### Assessing Community Health Needs

To assess the needs of the community (service area) the department must identify the significant health needs, prioritize those health needs, and identify resources potentially available to address them. Health needs of a community include improvement or maintenance of health status across the community, parts, neighborhoods, or population with health disparities. These needs can include financial, access, illness prevention, nutrition or social, behavioral, environmental factors that influence health. Resources can include organization, facilities, and programs within the community.

### Process to Complete a CHA

The recommended requirements for the CHA include the method of discovery, qualify community needs, quantify needs, and complete data analysis and comprehensive needs assessment. Federal and State regulations state that the following process must be completed in order to complete a Community Health Assessment (CHA).

1. Adopt a planning structure and identify resources. The planning structure should include a plan development process and staff/technical support plans.
2. Inform the community about the process and its importance; identify and engage stakeholders. From the beginning, stakeholders need to be consulted and actively involved.

3. Identify and secure resources. Resources may include financial and non-financial support from groups whose purposes align with creating a healthier community.
4. Identify data that describes community health status and needs.
5. Gather and analyze the data and develop a Community Health Assessment (CHA) summary report. Share the report with stakeholders.
6. With stakeholder assistance, review the key factors that are important for health and well-being as part of setting health priorities and objectives.
7. Document key points of the stakeholder discussion. Invite broader community participation and input. Include the feedback in the priority decision-making.
8. Develop the action plan/health improvement plan (HIP) that includes goals, objectives, and strategies.
9. Implement, track progress, and sustain the process. Celebrate the milestones.
10. Establish and implement a plan to communicate health needs and goals to the community.
11. Annually evaluate the goals, objectives, strategies, and indicators. Revise and update the needs assessment and health improvement plan.
12. Approve plans and make reports and improvement plans available to the public.

### **Steps to Complete the CHA**

The following is the process steps with milestones that were completed during the Community Health Assessment development. This process and milestones follow closely with the recommendations from the American Hospital Association and are a detailed list of actions taken in the above process per the IRS requirements (Source:

[http://www.healthycommunities.org/Education/toolkit/index.shtml#.XC\\_37lxKg2x](http://www.healthycommunities.org/Education/toolkit/index.shtml#.XC_37lxKg2x) ).

### **Steps in Process for CHA including Timelines / Milestones**

1. **Agreement and contracting** – discuss critical success factors for CHA process (completed 6/30/2023)
2. **Meeting with community leadership** – planning, methodology, and agreement of scope and services (Completed 6/30/2023)
3. **Identify and engagement of key stakeholders** – define the community and methodology (up to 6/30/2023)
4. **Create and process evaluation (survey/ assessment) methods** – work with organization to develop survey that reflects the community, needs, and priorities (6/15/2023 to 6/30/23)
5. **Collect and analyze the data** – including community health issues of past and future (7/1/2023 – 9/30/2023)
6. **Document and communicate priorities** – work with organization to define the priorities and engagement of key stakeholders including a Town Hall meeting(s) (9/26/2023)
7. **Plan improvement strategies** – work with organization for final report and distribution as needed (9/26/2023 to 11/15/2023). Distribution of CHIP to Board of Health on 10/6/2023 and after for more updates and questions.

- 8. **Organization to implement improvement plans** – work with key stakeholders in community for best practice implementation and success (10/1/2023 and ongoing)
- 9. **Evaluate progress on the key priorities and strategic alignment** – reevaluate progress and continual planning for future needs (FY2023 to FY2025)

**Model for Needs Assessment Process and Steps**

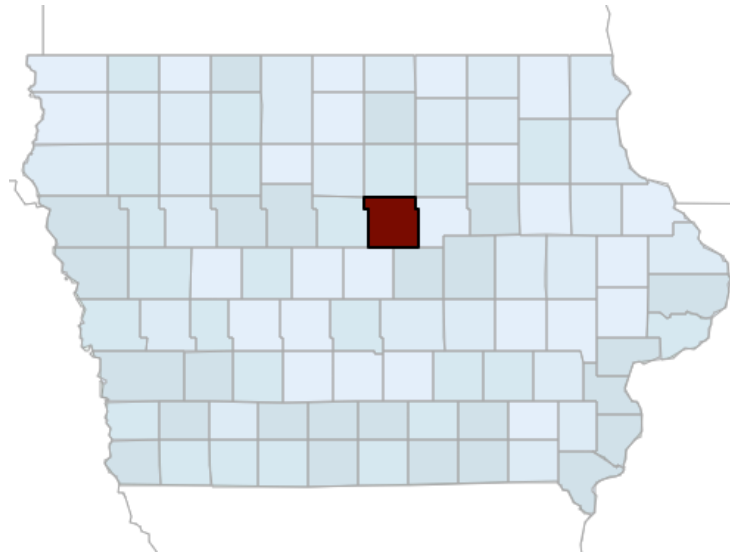
CLOSELY ALIGNED TO ABOVE STAGES OF THE PROCESS



Reference: Association for Community Health Improvement – American Hospital Association

**Community Served / Profile Description**

**Hardin County, Iowa Community Map**



### **Portion of Hardin County, Iowa for Needs Assessment - Specifics**

It was determined by the leadership of Hardin County Public Health Department, that the Hardin County Community Health Assessment will include those individuals that live or receive health services in Hardin County, Iowa AND live in the communities of such count. These communities include Eldora, Steamboat Rock, Iowa Falls, Ackley (portions), Alden, Hubbard, Union, New Providence, Radcliffe, Owasa, Whitten, Buckeye, and Garden City.

This would be the overall (total) population for this process is 16,708 (2021 Census data). A statistically significant sample size (n=72) was achieved during the survey phase of the process and represented both demographic, social/economic, religious, and age differences. Efforts were made to ensure that there was a broad interest represented in each of the data collection and prioritization phases.

The population of Hardin County, Iowa is 16,567 residents as of 2022, an increase of 4% since 2010. The county is considered 63.7% rural, covering approximately 569.31 square miles. The population density is approximately 29.6 people per square mile (Iowa is 57.1 residents per square mile).

(Source: <https://www.census.gov/quickfacts/fact/table/IA,hardincountyiowa,US/PST045222> )

The county population consists of 24.0% at or over the age of 65 years and the state average is 18.1%. In the under 18 age group, Hardin County, Iowa has a population of 18.4% and the state average is 22.6.2%.

The communities within Hardin County, Iowa are Eldora, Steamboat Rock, Iowa Falls, Alden, Ackley (portions), Hubbard, Union, New Providence, Radcliffe, Owasa, Whitten, Buckeye, and Garden City.

Major highways include US Hwy 20 and 65 and Iowa Highways 57 and 175. (source:

[https://en.wikipedia.org/wiki/Hardin\\_County,\\_Iowa](https://en.wikipedia.org/wiki/Hardin_County,_Iowa) ). Major types of employment in Hardin County, Iowa are education, health and social services (52%), retail trade (25%), financial and insurance (16%),

Education (15%), food service (11%), manufacturing (10%), and agriculture (10%).(source: [http://www.city-data.com/county/Hardin\\_County-IA.html](http://www.city-data.com/county/Hardin_County-IA.html)).

**Detailed Demographics – Hardin County, Iowa**

Hardin County Iowa

Zip	Name	Pop 2023	Pop 2000	HH Ave Size	Income	Med Age	Females	Males	White	Black	Hispanic	Other (Am Ind/Asian)
50126	Iowa Falls	5063	-2.5%	2.4	\$46,016	41.8	46.1%	53.9%	92%	0.6%	5.1%	Oth=2.3%
50627	Eldora	2639	-13.0%	1.9	\$61,544	40.2	49.4%	50.6%	79.3%	4.0%	2.8%	6.9%/3.0%
50601	Ackley	1576	-12.9%	2.0	\$54,392	41.7	54.5%	45.5%	80.6%	<0.1%	15.0%	<0.1/0.7%
50006	Alden	748	-17.3%	1.8	\$58,121	41.5	47.7%	52.3%	84.2%	<0.1%	<0.1%	Oth=17.8%
50122	Hubbard	851	-3.8%	2.0	\$62,126	58.1	54.8%	45.2%	94.8%	<0.1%	2.8%	Oth=2.4%
50230	Radcliffe	547	-9.9%	2.0	\$31,531	49.9	56%	44%	92.0%	<0.1%	5.1%	Oth=2.9%
	Iowa/Ave			2.8	\$174,400	38.5						

Source: City-data.com

**Collaborating CHA Parties**

Collaborating with several different agencies in, around, and those that serve Hardin County, Iowa, the CHA was completed. The following is a summary of key stakeholders in the CHA process. A detailed list of individuals or organizations who have played at least one key role in the assessment and are listed in the Community Health Partners and Resources section of this report.

**Greenbelt Home Care and Hardin County Public Health**

Address: 1707 – 21<sup>st</sup> Street, Eldora, Iowa 50627

Administrator: Megan Harrell (mharrell@greenbelthomecare.com)

**About/Services:** Greenbelt Home Care and Hardin County Public Health provide Registered Nurse services, Home Care Aids, and Public Health Services. More information can be found at <https://greenbelthomecare.com/>

Registered nurses from Greenbelt Home Care provide skilled home care for people who have an illness or have been in the hospital. They keep your physician updated on your recovery and perform skilled tasks such as drawing blood for lab tests, giving medicine by injection, caring for a wound, or teaching you and your family about your medications and treatments. Registered nurses help you return to your independent lifestyle and are knowledgeable of resources in our community that will help you recover and stay well. They can also make referrals to several different agencies in the community. Nursing services are funded by Medicare, Medicaid, Veterans Affairs, private insurance, grants, and the Hardin County Board of Supervisors.

Our trained Home Care Aides are available to assist you with a variety of needs. They offer personal care services such as bathing, skin and hair care, and foot care. Home Care Aides can also assist with



budgeting, meal planning and preparation, grocery shopping, household chores such as vacuuming and dusting, laundry, making the beds, and washing dishes. Home Care Aide services are funded by Medicare, Medicaid, Veterans Affairs, private insurance, grants, and the Hardin County Board of Supervisors.

Public health promotes and protects the health of people and the communities where they live, learn, work and play. Those of us working in public health try to prevent people from getting sick or injured in the first place. We also promote wellness by encouraging healthy behaviors. That can mean vaccinating children and adults to prevent the spread of disease. Or educating people about the risks of alcohol and tobacco. Public health sets safety standards to protect workers and develops school nutrition programs to ensure kids have access to healthy food. Public health works to track disease outbreaks, prevent injuries and shed light on why some of us are more likely to suffer from poor health than others. The many facets of public health include speaking out for laws that promote smoke-free indoor air and seatbelts, spreading the word about ways to stay healthy and giving science-based solutions to problems. (source: <https://greenbelthomecare.com/>)

Services cover the entire county and are listed below, but not limited to the following:

- Breast Cancer Screenings
- Blood Pressure clinics
- Blood draws & specimen collection
- Childcare Nurse Consultant
- Children Insurance program
- Community Care Coordination
- Emergency Response/Preparedness
- Environmental Health
- Homemaker services
- Dressing changes
- Immunization Clinics and Child Immunization
- Injections
- Lead prevention programs
- Material, Adolescent and Child health
- Medication Management
- Oral health programs
- Patient Education
- Referral to community services
- Skilled Nursing visit by RN
- Tobacco programs
- WIC

### **Pavelka's Point Consulting, LLC – External Consulting Services**

Address: 5832 West Mt Vernon Road, Cedar Falls, Iowa 50613

CEO: Sarah Pavelka, PhD, MHA, OTR/L, CPHQ, FNAHQ

**Bibliography:** Sarah Pavelka, PhD, MHA, OTR/L, CPHQ, FNAHQ has over 20 years of experience leading and coaching in organizational performance and continuous improvement in business, industry, education, and healthcare. Sarah is the CEO/owner of Pavelka's Point Consulting, LLC, and Program Director for Walden University, Master of Healthcare Administration and Bachelors in Healthcare Management programs.

Dr. Pavelka has professional and academic experiences as a 13-year faculty member for the Masters in Healthcare Administration program at Des Moines University, Improvement Advisor at the Iowa Healthcare Collaborative, and Adjunct Faculty for Upper Iowa University. Her previous professional experiences include the Quality Management Director at the Iowa Foundation for Medical Care, Director of Business and Industry Relations for Pella Regional Health Center, and clinical experience as the Director of the Occupational Therapy department for Pella Regional Health Center in Pella, Iowa.

Dr. Pavelka's extensive volunteer experiences included being a six-time National Baldrige examiner, as well as, a seven-year state examiner for the Iowa Recognition for Performance Excellence. She was also the Director-at-Large for the National Association for Healthcare Quality Board from 2014 to 2016. Sarah was also the Past president of the Iowa Association for Healthcare Quality Board; a task force member for the Iowa Hospital Association; and a member of the Des Moines University Alumni Board.

Sarah holds degrees in Biology and Psychology from Luther College; an Occupational Therapy degree from Concordia University-Wisconsin; MHA from Des Moines University, and a Ph.D. from Walden University. She is a Fellow for the National Association for Healthcare Quality (FNAHQ); a Certified Professional in Healthcare Quality (CPHQ); and has credentials in Occupational Therapy, Ergonomics, Lean, and Six Sigma Black Belt.

### **Community Health Assessment Process**

The following sections represent the process of the Community Health Assessment completed with Hardin County Community Leadership and Key Stakeholders. These process steps include creating purpose, defining scope and community, engagement of key leadership, survey assessment, analysis, prioritization, reporting of outcomes, and action planning.

The Iowa HHS and IRS requirements for a CHA are a four-phase; the process was represented earlier in the document (see Methodology – Scope and Purpose), and further explored in the following sections.

#### **Agreement/Contracting/Community Leadership (CHA Steps 1 – 3)**

On June 30, 2023, leadership from Hardin County Public Health, and Pavelka's Point Consulting, LLC met and discussed contracting arrangements, critical success factors, CHA process, timelines, and who would be key stakeholders. Shortly following this initial contracting meeting, these parties met on July 2023, for planning for the CHA, further methodology, distribution, survey needs, agreement, and scope

of services. Key leadership and stakeholders were also discussed, and a list of involvement was compiled in meeting minutes. It was elected at these meetings to move forward with the CHA process and initial survey distribution would happen at the following months through November 15, 2023, and survey conclusion on or about October 2023.

#### **Create the assessment, survey, and evaluation process (CHA Steps 4)**

Starting in June 2023, a Community Health Assessment survey was designed and created. The leadership of Public Health were allowed to review the survey as it was developed. Questions related to Social Determinants of Health were also added as recommended by best practice. More information can be provided on Social Determinates of Health at Healthy People 2030

<https://www.healthypeople.gov/2020/topics-objectives/topic/social-determinants-of-health> or Health Leads (source of survey questions) at <https://healthleadsusa.org/>.

#### **Collect the Data (CHA Steps 5)**

Collection of survey data consisted of many forms and methods. Survey links, fliers, and paper copies were sent to local businesses and employers. Surveys were left at the Public Health Department for residents of the communities and either electronic or paper (hard) copies were allowed to be submitted. Leadership for the process also attended several community events, school events, and religious gatherings to encourage participation in the survey process. Electronic links were sent multiple times in the local newspapers, provided through the Department website, and patients were encouraged to complete the survey before or after healthcare services. During the process, the leadership provided translation services (i.e. vision or language), electronic and paper copies, and a brief description of purpose to those who were taking the survey. No material or monetary incentives were provided when taking the survey.

#### **COMMUNITY PRESS RELEASE**

The following was a press release that was sent to the local newspaper entities and distributed for general awareness of the survey being conducted.

**HARDIN COUNTY RESIDENTS ASKED TO HELP IDENTIFY COMMUNITY HEALTH NEEDS**

**Date** – HARDIN COUNTY, Iowa – Hardin County Public Health wants to know how it can better serve its patients and the community, by asking residents of Hardin County directly.

Hardin County Public Health is in the process of updating their Community Health Assessment. The assessment is completed every five years to better understand what the local community organizations should be working on to address the region's health needs.

To provide residents with the opportunity to give their feedback and thoughts on area health needs, a short survey has been developed and is available online at <https://forms.gle/JyJUKERCazhQnNjz7> . The survey takes only about 10 minutes to complete. It can be found through a link or by scanning the following code.



Responses are kept confidential and there is a deadline of Friday, **Date**. Hardin County Public Health encourages residents to participate. Feedback from the survey and other informational gathering processes will be used to establish a Community Health Assessment Implementation Plan.

##

(add Public Health disclaimer and contact for press release contact)

**EMPLOYEE AND COMMUNITY COMMUNICATIONS**

The following is a direct emailing campaign for the employees in and around the and within the county. The organizations also posted the information in the local governmental mailings, Facebook ads, local newspaper ads, and Chamber of Commerce. This was also distributed in local grocery stores, places of worship, restaurants, community events, school events, and local gathering establishments.

**County Health Assessment**  
**We want to hear from you!**

Hardin County Public Health is conducting a survey for the health assessment of the county during 2023.

We ask that you take a few minutes to complete the survey below. Your feedback will help to identify needs, services, and programs for the county through the Public Health Department.

Survey Link or Scan the QR Code:  
<https://forms.gle/JyJUKERCazhQnNjz7>



### **Analyze the Data (CHA Steps 5 continued)**

During and following the community survey process, data from external sources (secondary data) were being collected and analyzed. This included data from sources such as Robert Wood Johnson County Health Rankings, City Data, Vital Statistics, etc. Survey data was considered primary data research and collected public health needs, perceptions, satisfaction with care and services for both public, private, and governmental agencies serving the Hardin County, Iowa area. This data can be found in the following charts in the Data Details section with both the CHA Survey Data (detailed primary) and Town Hall meeting outcomes (primary).

Both the external, secondary data, and the initial analysis of the survey outcomes (primary data) were analyzed and presented in the September 26, 2023, town Hall meeting. Top initial results were presented for the key stakeholders to continue to analyze, prioritize, and support realistic objectives for Hardin County, Iowa.

### **Town Hall Research Process (Engage & Prioritize with Stakeholders)**

#### **Document and Define Priorities (CHA Steps 6)**

Community leadership should always be involved with the determination and prioritization of key actions within a community (service area). Members will not only buy-in to the mission of the actions at a higher support level, but they will also often provide key resources that are needed for such action, which are vital to the actions success and often cannot happen with only department supporting resources. Town halls are a focus group type setting where members can provide insight, consensus, and assist with prioritization of health issues. These sessions gathered input from key stakeholders, started priorities, and encouraged on-going dialog between entities.

Entities invited to the Town Hall meeting included local hospital, public health, mental health providers, service providers, employers, local residents, faith-based leadership, school leadership, business leaders, local government officials, and those that receive care (including persons with chronic conditions, un-insured, low-income, and minority groups).

Key community stakeholder groups were invited to a September 2023 Town Hall meeting. The Town Hall meeting was held Sept 26, 2023, from 11:30 AM to 1:00 PM. At the Town Hall meeting, a short informational presentation was given, facilitation of priorities from the survey and health ranking information was completed, and key findings were determined out of one 90-minute meeting.

#### **TOWN HALL GENERAL PUBLIC INVITE (LETTER)**

Public notice sent to local newspapers, department websites, and local posting for attendance at the Town Hall meeting. All community members were invited to attend, and snacks were provided.

**Good Morning!**

I am writing to ask that you please join us in a Town Hall meeting for the Community Health Improvement process on Tuesday, September 26th from 11:30am-1pm at the Eldora Public Library. A light lunch will be provided and our consultant for the Community Health Improvement Process, Dr. Sarah Pavelka from Pavelka's Point Consulting, will be present to provide us with a presentation on the following:

- Overview of the health needs assessment/survey process and purpose
- Review of past priorities and action items for Hardin County
- Provide a summary of our current assessment/survey results
- Discussion on next steps

Most importantly, we want to have an open dialog with all of you to hear your perspective on the current assessment and how we can come together as a community to better the lives of Hardin County residents!

I hope you will join us for lunch and help us make an impact on the health needs for Hardin County!

Please RSVP to [mharrell@greenbelthomecare.com](mailto:mharrell@greenbelthomecare.com) by Friday 9/22/23

If you are unable to attend, please consider sending someone else in your place. I hope to see you all there!

**\*\*Also if you haven't yet taken the Community Health Needs Assessment, the link is below!\*\***

Community Health Assessment/Survey Link: <https://forms.gle/JyJkE>

Respectfully,

—  
**Megan Harrell, RN**  
Administrator  
Greenbelt Home Care  
Hardin County Public Health  
1707 21st Street  
Eldora, IA 50627  
Office. 641.939.8444  
Cell. 641.858.7384  
F. 641.939.8450  
W. [www.greenbelthomecare.com](http://www.greenbelthomecare.com)

## TOWN HALL AGENDA

The following Agenda and Power Point were completed at the September 26, 2023, Town Hall meeting. At the end of the meeting, it was determined to have an initial list of community priorities from the analysis of primary and secondary research data. These initial priorities list will be further discussed with a steering committee of community leadership and represent community-based organizations which can address health concerns. This group, considering the priority and input from the Town Hall meeting will strategize and formulate final action plans for Hardin County, Iowa health needs.

## AGENDA

- Welcome and introductions
- Review the assessment/survey process and purpose
- Review past priorities and action items for Hardin County
- Provide summary of current assessment results
- Gain perspective from community participants for 2023
- Next steps and conclusion

CHA - HARDIN CO, IOWA

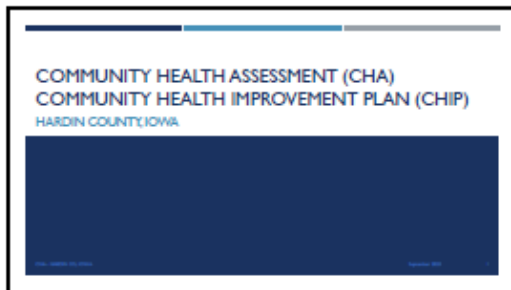
September 2023

## TOWN HALL POWERPOINT PRESENTATION

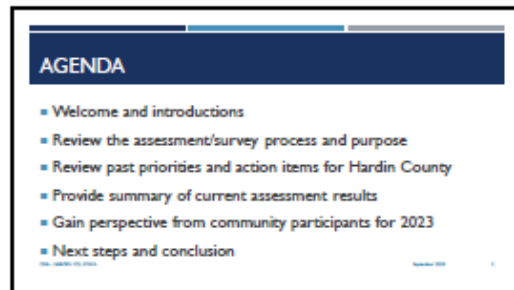
The following PowerPoint presentation (please see image below for complete slide deck) was presented to key community stakeholder groups at the October 2020 Town Hall meeting.



Community Health  
Needs Assessment (C



1



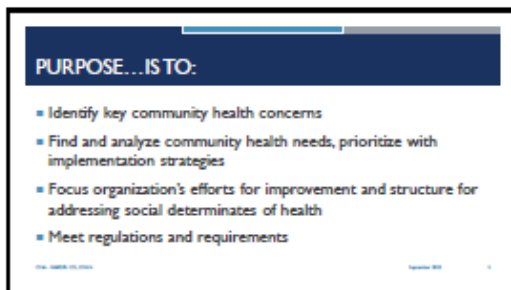
2



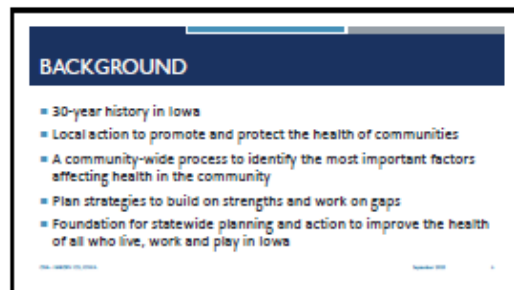
3



4



5



6



### REQUIREMENTS

- Five steps outlined order to complete a CHA
  - Define the community
  - Assess communities' health needs
  - Include input representing broad interests of the community
  - Document the CHA
  - Make submit a report and make it available to public

8



9

### PAST PRIORITIES AND ACTION ITEMS

10

### PRIORITIES – PRIOR

- Chronic disease, mental health, substance abuse (adults)
- Prevention of disease and illness
- Crisis care, mental health
- Sexual health / STD
- Individual preparedness in all populations (ability to recover from health incident)
- Access to care (all populations)

11

### IMPROVEMENTS – PRIOR

(NOTE: % MAY NOT ADD UP TO 100% - ALMOST ALL QUESTIONS WERE OPTIONAL)

Priority Area	Not a Problem	Somewhat a Problem	A Big Problem
Access to mental health services	8.6%	31%	38.6%
Substance prevention and support	5.2%	29.6%	31.7%
Right obesity	5.2%	36.2%	33.7%
Alcohol use	3.4%	41.4%	30%
Opium/opioids use	5.2%	36.2%	33.7%
Prevention of injuries and violence	12%	43.7%	41.4%
Protection against environmental hazards	19.2%	43.7%	22.4%
Prevent the spread of epidemics	17.6%	44.8%	24.7%
Prepare and respond to public health emergencies	41.4%	31%	22.4%
Sexual health and STD prevention	15.5%	48.2%	21%
Access to care	18.9%	29.6%	36.2%

12

### CURRENT ASSESSMENT RESULTS

13

Hardin County Health Assessment

2023

### IMPROVEMENTS (2019-2023)

- Uninsured (adult and children)
- Mammogram screening (preventative services)
- School funding
- Air pollution with particulate matter

14

### STATE HEALTH RANKINGS - 2023

SOURCE: COUNTY HEALTH RANKINGS RANK: 29<sup>TH</sup>

Health Factor	Hardin Co. County	Rank	Min	Max
<b>Quality of Life</b>				
Life Expectancy	75.1	75th	74.0	76.2
Healthcare Access	75.1	75th	74.0	76.2
Healthcare Quality	75.1	75th	74.0	76.2
Healthcare Costs	75.1	75th	74.0	76.2
Healthcare Workforce	75.1	75th	74.0	76.2
Healthcare Disparities	75.1	75th	74.0	76.2
Healthcare Innovation	75.1	75th	74.0	76.2
Healthcare Infrastructure	75.1	75th	74.0	76.2
Healthcare Policy	75.1	75th	74.0	76.2

15

### STATE HEALTH RANKINGS - 2023 (CONT.)

SOURCE: COUNTY HEALTH RANKINGS RANK: 49<sup>TH</sup> / 41<sup>ST</sup>

Health Factor	Hardin Co. County	Rank	Min	Max
<b>Health Disparities</b>				
Healthcare Access	49th	49th	45th	53rd
Healthcare Quality	49th	49th	45th	53rd
Healthcare Costs	49th	49th	45th	53rd
Healthcare Workforce	49th	49th	45th	53rd
Healthcare Disparities	49th	49th	45th	53rd
Healthcare Innovation	49th	49th	45th	53rd
Healthcare Infrastructure	49th	49th	45th	53rd
Healthcare Policy	49th	49th	45th	53rd

16

### STATE HEALTH RANKINGS - 2023 (CONT.)

SOURCE: COUNTY HEALTH RANKINGS RANK: 29<sup>TH</sup>

Health Factor	Hardin Co. County	Rank	Min	Max
<b>Physical Environment</b>				
Air Pollution	29th	29th	25th	33rd
Water Quality	29th	29th	25th	33rd
Land Use	29th	29th	25th	33rd
Green Spaces	29th	29th	25th	33rd
Transportation	29th	29th	25th	33rd
Disaster Preparedness	29th	29th	25th	33rd
Climate Change	29th	29th	25th	33rd
Public Safety	29th	29th	25th	33rd

17

### STATE HEALTH RANKINGS - 2023 (CONT.)

SOURCE: COUNTY HEALTH RANKINGS RANK: 30<sup>TH</sup>

Social & Economic Factors	Hardin Co. County	Rank	Min	Max
High School Completion	30th	30th	25th	35th
College Enrollment	30th	30th	25th	35th
Unemployment	30th	30th	25th	35th
Median Income	30th	30th	25th	35th
Health Disparities	30th	30th	25th	35th
Healthcare Access	30th	30th	25th	35th
Healthcare Quality	30th	30th	25th	35th
Healthcare Costs	30th	30th	25th	35th
Healthcare Workforce	30th	30th	25th	35th
Healthcare Disparities	30th	30th	25th	35th
Healthcare Innovation	30th	30th	25th	35th
Healthcare Infrastructure	30th	30th	25th	35th
Healthcare Policy	30th	30th	25th	35th

18

### STATE HEALTH RANKINGS - 2023 (CONT.)

SOURCE: COUNTY HEALTH RANKINGS RANK: 37<sup>TH</sup>

Physical Environment	Hardin Co. County	Rank	Min	Max
Air Pollution	37th	37th	33th	41th
Water Quality	37th	37th	33th	41th
Land Use	37th	37th	33th	41th
Green Spaces	37th	37th	33th	41th
Transportation	37th	37th	33th	41th
Disaster Preparedness	37th	37th	33th	41th
Climate Change	37th	37th	33th	41th
Public Safety	37th	37th	33th	41th

19

Hardin County Health Assessment

20

### PERCEPTIONS OF HEALTH & SERVICES - 2023

Needs Attention in the Communities	Percentage Selected
Mental illness (includes = 50.9%)	67.2%
Abuse/Violence	67.2%
Obesity	67.2%
Ten health (drinking, abuse, tobacco)	61.2%
Family planning / birth control	56.2%
Drugs / illegal substances	54.2%
Nutrition	50.9%
Foster	49.1%
Chronic disease	42.6%
Preventive health	42.6%

20

### SOCIAL DETERMINATES OF HEALTH - 2023

- Food shortage (no=86%)
- Utility shut off (cannot pay bill) (no=95%)
- Loss of housing (within 2 months) (no= 95%)
- Childcare access (prevents working or school) (no=74%)
- Need healthcare, avoid because of cost (no=89%)
- Lack of transportation (to key appointments/work) (no=93%)
- Missed work because of transportation (no=93%)
- Reading ability (health materials or other) (no=96%)
- Safety at home (no=93%)

21

### 2023-2028 AREAS AND ACTIVITIES

22

### OBJECTIVES AND STRATEGIES... THINK ABOUT

- Population's overall health
- Internal Public Health services
- Community and capacity building
- Community orientated education, wellness, and support

23

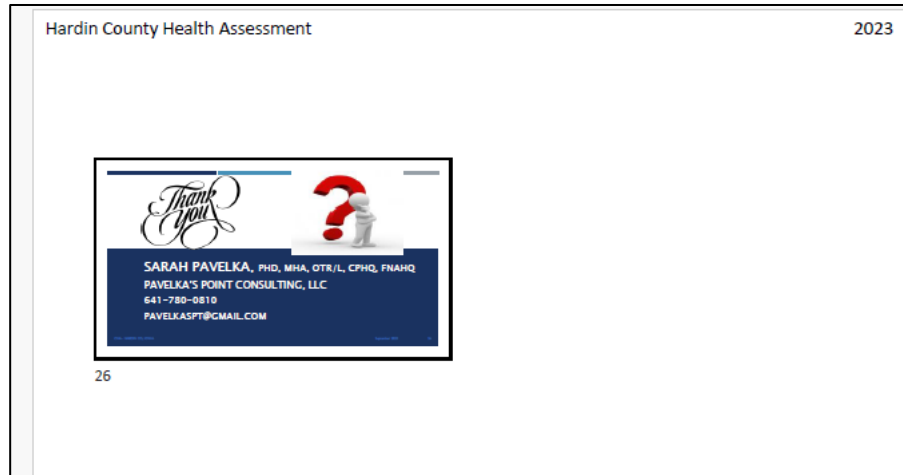
### PRIORITIES AND ACTIONS

- Review current results and questions
- Define the current strengths for Hardin County
  - What does it take to sustain these strengths?
- Determine top priorities and improvement areas
  - What needs to be improved or changed?
- Suggestions for actions

24

### NEXT STEPS AND CONCLUSION

25



**TOWN HALL ATTENDING KEY STAKEHOLDERS (ENGAGEMENT AND PRIORITIZATION)**

The following is a list of community members (identified key stakeholders and interested community members) that were able to participate in the Town Hall meeting. In all there were 13 attendees at the September 26, 2023, meeting.

Hardin County CHA Town Hall Meeting		
<u>Name</u>	<u>Organization - Title</u>	<u>Email</u>
Nelly Limas	Limas Farms Contractor	<a href="mailto:Nellylimas66@hotmail.com">Nellylimas66@hotmail.com</a>
Kala Eller	Hansen Family Hospital	<a href="mailto:Kala.eller@mercyhealth.com">Kala.eller@mercyhealth.com</a>
Shelby Guerara	Hansen Family Hospital	<a href="mailto:Shelby.guevara@mercyhealth.com">Shelby.guevara@mercyhealth.com</a>
Jill Shafer	Hansen Family Hospital	<a href="mailto:shaferjm@mercyhealth.com">shaferjm@mercyhealth.com</a>
George Van Mock	Hansen Family Hospital	<a href="mailto:vonmockg@mercyhealth.com">vonmockg@mercyhealth.com</a>
Rachel Loyd	<b>Greenbelt Home Care</b>	<a href="mailto:rloyd@greenbelthomecare.com">rloyd@greenbelthomecare.com</a>
Megan Harrell	Greenbelt Home Care/Public H	<a href="mailto:mharrell@greenbelthomecare.com">mharrell@greenbelthomecare.com</a>
Desiray Larson	Hansen Family Hospital	<a href="mailto:larsondna@mercyhealth.com">larsondna@mercyhealth.com</a>
Renee McClellan	Hardin County Supervisor	<a href="mailto:rmcclellan@hardincountyia.gov">rmcclellan@hardincountyia.gov</a>
Taylor Wilson	SATUCI	<a href="mailto:twilson@satuci.com">twilson@satuci.com</a>
Jacob Parks	SATUCI	<a href="mailto:jparks@satuci.com">jparks@satuci.com</a>
Jason Kingbird	SATUCI	<a href="mailto:jkingbird@satuci.com">jkingbird@satuci.com</a>
Christie Pence	Hardin County Savings Bank	<a href="mailto:Christie@hardincsb.com">Christie@hardincsb.com</a>
Shawn Davis	Eldora EMS	<a href="mailto:sdavis@eldoraiowa.com">sdavis@eldoraiowa.com</a>
Amanda Jones	Greenbelt Home Care/Public H	<a href="mailto:ajones@greenbelthomecare.com">ajones@greenbelthomecare.com</a>
Owen Spencer	Eldora-Ackley EMS	<a href="mailto:ospencer@eldoraiowa.com">ospencer@eldoraiowa.com</a>
Aaron Budweg	City of Eldora	<a href="mailto:abudweg@eldoraiowa.com">abudweg@eldoraiowa.com</a>
Breanne Bulter	Board of Health – Hardin County	<a href="mailto:breannebutler@heartofiowa.net">breannebutler@heartofiowa.net</a>
Sarah Pavelka	Pavelka’s Point Consulting, LLC	<a href="mailto:pavelkaspt@gmail.com">pavelkaspt@gmail.com</a>

**Town Hall Outcomes**

The following were the outcomes from the Sept 26, 2023, Town Hall meeting. These outcomes can be further explored in the Detailed Data/ Town Hall Meeting Outcomes. The outcomes were formulated from both primary data (survey) and secondary data (including County Health Rankings). The outcomes were compiled from large and small group round-robin brainstorming sections and then outlined into affinity groups. The following four affinity groups were seen in both meeting sessions.

Priorities
Mental Health: Assess and support depth and breadth of services for Mental Health needs in the communities.
Substance Abuse: Reduce the concern for and presence of substance abuse related health/safety issues.
Suicide prevention: Services and assistance for those struggling with mental health.
Childcare Services/ Access: Address childcare services within the communities. These could include housing, daycare, nutrition, and health
Teen Health / Teen Health Services: Improvement and availability/ access of services for teen health needs.
Knowledge for Preventative Services: Communicate, convene, and spread information (knowledge) for prevention services.
Knowledge about health services: Coalition group to address the services and access for community health needs.

## Community Strategy Formulation and Action Planning

### Planning for Improvement Strategies (CHA Steps 7 & 8)

To complete the final steps of the process, Hardin County, Iowa community leadership held meetings starting September 26, 2023. During this step of the Community Health Assessment, Hardin County, Iowa community leadership gathered all primary and secondary data, completed a relevance and achievable check, and determined 19 SMART goals (tactics) for their improvement of the community’s health. SMART goals are specific, measurable, achievable, relevant, and time-oriented action plans for improvements in the community. Action plan (Community Health Improvement Plan – CHIP) was approved by the Hardin County Board of Health on October 12, 2023.

This step also includes distribution of the CHA final report. Starting Sept 26, 2023, County Public Health department will be able to be distributed to the community. This report will be sent electronically to all participating and interested community partners for Hardin County Public Health. The report will be provided, along with prior reports, on the Greenbelt Home Care/ Hardin County Public Health website (<https://greenbelthomecare.com/hardin-co-public-health>). Paper copies will be distributed to interested parties as requested to Greenbelt Home Care/Hardin County Public Health.

**Community Health Improvement Plan (CHIP) & Tactics – Hardin County Public Health**

Community Health Assessment results - starting 11/1/2023 to 12/31/2028 (Approved 10/12/2023)

Health Areas of Need (Goals)	"Specific Actions" to address community health need (Tactics)	LEAD	Partners	Timeframe	Performance Indicators: Data Sources/ Collection Timing	
<b>1 Mental Health</b>						
<b>Assess and support depth and breadth of services for Mental Health needs in the communities</b>	a	Increase providers and access	HFH	Veterans Affairs of Hardin co., Senior Life Solutions, Mental Health coalition, Hanson Family Hospital, Green Belt Home Care (Public Health)	Year 3-5	Availability of mental health resources in the community including patient treatment options
	b	Employment opportunities for providers			Year 3-5	
	c	Funding reimbursement for shortage – barrier for services			TBD	
	d	Improvement of community responses (example EMT education)	Coalition	Year 1		
	e	Access to transportation to and from services in other communities	(TBD)	Year 2-3	Availability at certain times or days, even limited at first	
<b>Progress Notes:</b>						
<b>2 Substance Abuse</b>						
<b>Assess and support depth and breadth of services for substance use and abuse in the communities</b>	a	Assess and create plan for substance abuse prevention and support in the communities	Coalition	Satuci, Hanson Family Hospital, Green Belt Home Care (Public Health)	Year 1-2	Presence of substance abuse related issues
	b	Drugs and substance use and presentation services/response	Coalition		Year 3-5	Actively providing services for the communities (year 1 baseline)
	c	Increased access to services	(TBD)		Year 3-5	Increase (15% year over year) from baseline number of services provide and the number of recipients for each service
<b>Progress Notes:</b>						
<b>3 Childcare Services/ Access</b>						
<b>Address childcare services within the communities</b>	a	Investigate the options and opportunities with pediatric health and wellness services and access	Childcare Resource & Referral	Childcare Resource & Referral, Hardin County Child Abuse Prevention Coalition Local Childcare providers and Centers	Yer 2-3	Provide a list of opportunities for potential services in communities
	b	Continue to collaborate with Partners for the provision of Childcare services – supporting their efforts for availability and education to providers	Coalition		Year 3-5	Active (systematic) efforts (including knowledge sharing) from partnerships
<b>Progress Notes:</b>						

**Community Health Improvement Plan (CHIP) & Tactics – Hardin County Public Health**

Community Health Assessment results - starting 11/1/2023 to 12/31/2028 (Approved 10/12/2023)

	Health Areas of Need (Goals)		"Specific Actions" to address community health need (Tactics)	LEAD	Partners	Timeframe	Performance Indicators: Data Sources/ Collection Timing
<b>4 Knowledge for Preventative Services</b>							
<b>Communicate, convene, and spread information (knowledge) for prevention services</b>	A		Providing prevention services (i.e. immunizations) to underserved population and or communities	GBHC	Hanson Family Hospital, Green Belt Home Care (Public Health)	Year 1	Actively providing services for the underserved communities (year 1 baseline)
	B		Address the provision of (potential) hospital outreach services to communities outside of Iowa Falls, Iowa.	GBHC		Year 2	Increase (15% year over year) from baseline number of services provide and the number of recipients for each service
	C		Distribution of information and knowledge of services at Community "sharing" meetings	Circle of Life (group)		Year 1	Active (systematic) efforts (including knowledge sharing) from partnerships
<b>Progress Notes:</b>							
<b>5 Teen Health / Teen Health Services</b>							
<b>Improvement and availability/ access of services for teen health needs</b>	A		Assess and create plan for teen health/ services and support in the communities	GBHC	Hanson Family Hospital, Green Belt Home Care (Public Health)	Year 1-2	Actively providing services for the underserved communities (year 1 baseline)
	B		Improvement of services through availability and access for teen health				Increase (15% year over year) from baseline number of services provide and the number of recipients for each service
	C		Continue to collaborate with Community Coalition				Baseline
<b>Progress Notes:</b>							
<b>6 Health Coalition for County</b>							
<b>Coalition group to address the services and access for</b>	a		Assessment for the need of community coalition ("action" group)	BBHC	Hanson Family Hospital, Green Belt Home Care (Public Health)	Year 1	Provide a list of opportunities for potential services in communities

Community Health Improvement Plan (CHIP) & Tactics – Hardin County Public Health						
Community Health Assessment results - starting 11/1/2023 to 12/31/2028 (Approved 10/12/2023)						
Health Areas of Need (Goals)		"Specific Actions" to address community health need (Tactics)	LEAD	Partners	Timeframe	Performance Indicators: Data Sources/ Collection Timing
community health needs	b	Create scope of work and purpose for group that will actively address health needs within the communities			Year 1-5	Increase (15% year over year) from baseline number of services provide and the number of recipients for each service
	c	Plan and develop initiatives for community “health” coalition.	GBHC		Year 1-5	Baseline
<b>Progress Notes:</b>						

**PRIOR ASSESSMENT ACTION PLANS**

During the years 2020 to 2023, Hardin County Public Health and Community groups along with key community partners improved the community’s health. For details of the 2017 to 2023 Community Health Assessment tactical (action) planning, please see the details in the report submitted to the State of Iowa. Actions for improvements included but not limited to access to mental health services, suicide prevention, decreasing obesity, alcohol use and abuse, opioid (narcotic) use, prevention of injuries from violence, environmental hazards, spread of epidemics, public health emergencies, prevention of sexual transmission of diseases, and access to care.

There were improvements in four (4) of the 11 areas. The three (3) other areas were slightly improved in their ratings. The improvements did not move the issues to “not a problem;” however, did move the issues to “Somewhat of a Problem” in a majority of the participants taking the survey and during Town Hall prioritization (CHA steps 5 and 6). The chart below was provided to the participants at the Town Hall meeting (September 2020) and signifies that Mental Health Services and Substance Use/Abuse still remain a concern for the survey participants.



<b>IMPROVEMENTS – PRIOR</b>			
<b>(NOTE: % MAY NOT ADD UP TO 100% - ALMOST ALL QUESTIONS WERE OPTIONAL)</b>			
<b>Priority Area</b>	<b>Not a Problem</b>	<b>Somewhat a Problem</b>	<b>Still a Problem</b>
Access to mental health services	8.6%	31%	58.6%
Suicide prevention and support	5.2%	39.6%	51.7%
Fight obesity	5.2%	36.2%	55.1%
Alcohol use	3.4%	41.4%	50%
Opioid / narcotic use	5.2%	36.2%	55.1%
Prevention of injuries and violence	12%	43.1%	41.4%
Protection against environmental hazards	29.3%	43.1%	22.4%
Prevent the spread of epidemics	27.6%	44.8%	24.1%
Prepare and respond to public health emergencies	41.4%	31%	22.4%
Sexual health and STD prevention	15.5%	48.3%	31%
Access to care	18.9%	39.6%	36.2%

**Evaluation of Progress on Key Priorities and Strategic Alignment (CHA Step 9)**

Hardin County Public Health departments will continually monitor the action plans for changes and adjustments as key findings present within three years. This assessment and findings will be incorporated into future strategic planning efforts and include a systematic cycle of improvement. Improvements will be completed using performance excellence tools, including but not limited to the Plan, Do, Study, Act improvement cycle and will include as many community partners, agencies, and interested individuals a possible for best outcomes and sustainability.

**COMMUNITY (SERVICE AREA) HEALTH STATUS**

**Primary Research Findings**

In summer through fall 2023, Hardin County Public Health sponsored/conducted primary research (survey) to all residents residing or receiving services in their primary service area, with 72 individual replies.

**REPLIES BY ZIP**

<b>Hardin County CHA 2023 Sample by PSA Zips</b>		
<b>#</b>	<b>Zips</b>	<b>Returns (% of Total)</b>
1	50627	43.1%
2	50126	38.9%
3	50601	4.2%
4	50122	2.8%

5	50230	2.8%
6	50258	2.8%
7	50006	2.8%
8	50271	1.4%
9	50680	1.4%

OVERALL QUALITY OF SERVICES IN THE COMMUNITY (SERVICE AREA)

Community Healthcare Needs Assessment 2023	
<b>In general, how would you rate the overall quality of the healthcare delivered to your community?</b>	<b>Hardin County (2023) N=72</b>
Top 2 Boxes	44 (61.1%)
Very Good	<b>12 (16.6%)</b>
Good	<b>32 (44.4%)</b>
Fair	<b>22 (30.5%)</b>
Poor	<b>6 (8.3%)</b>
Very Poor	<b>0 (0.0%)</b>
Bottom 2 Boxes	<b>6 (8.3%)</b>

RATING OF HEALTH SERVICES

Community Healthcare Needs Assessment 2023	
How would you rate the following health services?	Poor / Very Poor %
	Hardin County (2023) N= 72
Ambulance Service	2.7%
Childrens' Health	<b>11.1%</b>
Chiropractor	2.7%
Dentists	1.3%
Eye Doctor / Optometrist	6.0%
Family Planning Services	<b>27.7%</b>
Home Health	2.7%
Hospice	9.7%
Hospital Inpatient Services	<b>31.9%</b>
Mental Health Services	<b>40.1%</b>
Nursing Home	<b>23.6%</b>
Pharmacy	2.7%

Public Health Department	6.9%
School Nurse	9.7%
Specialist Physician care	<b>31.1%</b>
Teen Health (drinking, abuse, safety, pregnancy)	<b>37.5%</b>

CAUSES OF DISEASE OR DISABILITY IN THE COMMUNITY

Community Healthcare Needs Assessment 2023	
In your opinion, how much of a problem are the following causes of diseases or disability in your community?	Major Problem %
	Hardin County (2023) N= 72
Mental Illness	73.6%
Obesity	65.2%
Substance Abuse	55.5%
Drug Abuse	51.3%
Diabetes	36.1%
Suicide	29.1%
Cancer	22.2%
Heart Disease	23.6%
Trauma	19.4%
Respiratory Disease	9.7%
Sexually Transmitted Diseases	8.3%
Stroke	6.9%
Pneumonia / Flu	4.1%

HEALTH NEEDS BY AGE

Community Healthcare Needs Assessment 2023	
How well do you feel our local health care providers are doing in addressing the health needs of the following age groups?	Poor / Very Poor %
	Hardin County (2023) N= 72
Infants	13.8%
Age 1 - 12	9.7%
Age 13 -17	19.4%
Age 18 – 25	16.6%
Age 26-44	16.6%

Age 45 - 64	13.8%
Age 65 - 84	11.1%
Over 85	11.8%

HEALTH SERVICES OUTSIDE OF THE COUNTY

Community Health Assessment 2023	
<b>Over the past 2 years, did you or your household receive health care services outside of your county?</b>	<b>Hardin County (2023) N= 72</b>
Yes	79.2%
No	20.8%
<i>Totals</i>	<b>100%</b>
<b>Please list the health care services you or your household member(s) have received outside of your county: Number of replied</b>	<b>Hardin County (2023) N= 42</b>
Allergy	0
Cancer	1
Cardiology	3
Dental	1
Dermatology	3
Emergency Room/Urgent Care	2
ENT	0
Eye / Surgery	1
Heart Disease	3
Mental Health	1
Neurology	2
OB/Women’s Heath	13
Oncology	1
Orthopedics Surgery	1
Pain management	0
Pediatric	4
Podiatry	0
Specialty providers (Pulmonary, Sleep)	4
Surgery	2
<b>If offered, would you have received the services locally?</b>	<b>% of Replies</b>

Yes	50.9%
Maybe	28.1%
No	21.1%

IMPROVEMENT OF SERVICES

Community Health Assessment 2023			
Are there health care services in your community or neighborhood that you feel need to be improved and or changed? (Please be specific)			
Rank	Services	# Replies N= 17	% of Replies
1	Mental Health Services/Counseling	3	4.1%
2	Transportation for health services	2	2.7%
3	OB / Women’s Health	2	2.7%
4	Prevention services/ Natural Medicine	2	2.7%
5	Teen Health	1	1.3%
6	Specialist Care	1	1.3%
7	Low-income health services	1	1.3%
8	Urgent Care	1	1.3%
9	After hours care & Pharmacy	1	1.3%
10	Clinic Services	1	1.3%

THREE YEAR ACTION PLAN IMPROVEMENTS

Priority Area (N = 72)	Not a Problem	Somewhat a Problem	Still a Problem
Access to mental health services	8.6%	31%	58.6%
Suicide prevention and support	5.2%	39.6%	51.7%
Fight obesity	5.2%	36.2%	55.1%
Alcohol use	3.4%	41.4%	50%
Opioid / narcotic use	5.2%	36.2%	55.1%
Prevention of injuries and violence	12%	43.1%	41.4%
Protection against environmental hazards	29.3%	43.1%	22.4%
Prevent the spread of epidemics	27.6%	44.8%	24.1%

<b>Prepare and respond to public health emergencies</b>	41.4%	31%	22.4%
<b>Sexual health and STD prevention</b>	15.5%	48.3%	31%
<b>Access to care</b>	18.9%	39.6%	36.2%

PRESSING ISSUES FOR TODAY’S IMPROVEMENTS

Community Health Assessment 2023			
Which health needs are most pressing TODAY and are in need of improvement?			
Rank	Health Needs	# Replies N= 72	% of Total Replies
1	Mental Health/Counseling	61	89.7%
2	Abuse/Violence	42	61.8%
3	Obesity (Chronic Disease)	41	60.3%
4	Teen Health	41	60.3%
5	Drugs / Illegal Substances	37	54.4%
6	Poverty	37	54.4%
7	Family Planning/ Birth Control Services	36	52.9%
8	Suicide	35	51.5%
9	Nutrition	33	48.5%
10	Alcohol Use and Abuse	31	45.6%
(Must consider that the same people who voted for multiple categories)			

RATING OF SERVICES FOR COMMUNITY

Community Health Assessment 2023								
How would you rate each of the following in your community?	Very Poor	Poor	Fair	Good	Very Good	Not Aware/Not Applicable	Very Poor + Poor	Good + Very Good
Emergency preparedness	1	5	7	19	12	5		
Health Screenings	1	10	25	20	9	6		
Access to services	3	14	26	16	8	4		
Immunizations – vaccines	1	1	18	29	18	3		
Tobacco prevention / cessation programs	1	14	24	12	3	17		
TB control and testing	5	7	17	17	5	20		
Disease investigation	6	9	17	17	6	16		

Care giver training programs	2	10	19	15	3	22		
Early childhood programs	3	5	21	21	8	13		
Prevention of falls	3	3	21	15	1	28		
Obesity prevention and treatment	6	14	26	4	1	20		
Spiritual health support	3	11	20	20	2	15		
Drug Abuse programs	8	115	22	7	1	16		
Reduction of opiate use	9	15	19	6	1	20		
Alcohol use and treatment programs	8	15	24	4	1	18		
Transportation (bus) services	12	16	19	8	1	14		
Violence prevention	10	12	19	7	1	21		

**Personal Health Needs: Survey Results**

PERSONAL HEALTH NEEDS: HEALTH DESCRIPTION

Community Healthcare Needs Assessment 2023	
In general, how would you best describe your health? (Choose one)	Hardin County (2023) N= 72
Top 2 Boxes	77.7%
Very Good	12 (16.6%)
Good	44 (61.1%)
Fair	13 (18.1%)
Poor	3 (4.1%)
Very Poor	0
Bottom 2 Boxes	4.1%

PERSONAL HEALTH NEEDS: SOCIAL DETERMINANTS OF HEALTH

Community Health Assessment 2023			
Social Determinants of Health – questions for need:	No %	Yes %	Total %
In the last 12 months, did you ever eat less than you felt you should because there wasn't enough money for food?	14%	86%	100.0%
In the last 12 months, has your utility company shut off your service for not paying your bills?	5%	95%	100.0%
Are you worried that in the next 2 months, you may not have housing?	5%	95%	100.0%
Do problems getting childcare make it difficult for you to work or study? (leave blank if you do not have children)	26%	74%	100.0%
In the last 12 months, have you needed to see a doctor, but could not because of cost?	12%	88%	100.0%
In the last 12 months, have you ever had to go without health care because you didn't have a way to get there?	7%	93%	100.0%
Do you ever need help reading hospital materials?	4%	96%	100.0%
Are you afraid you might be hurt in your apartment building or house?	7%	93%	100.0%
Have you ever missed work or lost a job due to unreliable transportation?	7%	93%	100.0%



PERSONAL HEALTH NEEDS: OVERALL HEALTH – 2 YEAR COMPARISON

Community Healthcare Needs Assessment 2023	
<b>Compared to a year ago, how would you rate your overall health in general now?</b>	<b>Hardin County (2023) N= 72</b>
Much better than a year ago	14 (19.4%)
About the same	52 (72.2%)
Much Worse than a year ago	6 (8.3%)

PERSONAL HEALTH NEEDS: USE OF PRIMARY CARE PROVIDER

Community Healthcare Needs Assessment 2023	
<b>Does your household have received medical care?</b>	<b>Hardin County (2023) N= 72</b>
Primary Care	90.3%
Urgent Acute	4.2%
Don't seek medical care	4.2%
Out of communities	1.4%

PERSONAL HEALTH NEEDS: HEALTH PRACTICES

Community Healthcare Needs Assessment 2023	
<b>Do you follow these health practices?</b>	<b>Hardin County (2023) N= 72 (NA for age)</b>
If over 50, have you had a colonoscopy?	Yes = 23/30
If male over 50, do you have annual prostate exams?	Yes = 10/16
If female over 40, do you have annual mammograms?	Yes = 24/29
If female, do you have a pap smear every other year?	Yes = 24/42
Do you get 2.5 hours a week of moderately intense physical activity?	Yes = 44/72

PERSONAL HEALTH NEEDS: HEALTH PRACTICES

Community Health Assessment 2023			
<b>Please complete sentence below - "Are you...</b>	No %	N/A %	Yes %
Eating right (Daily, 5 servings of fruits, vegetables, wheat)	27 (37.5%)	0%	45 (62.5%)

Using tobacco products weekly	55 (76.3%)	7 (9.7%)	10 (13.8%)
Exercising 2-3 times weekly	28 (38.8%)	0%	44 (61.1%)
Consuming alcohol (more than 1 drink daily)	53 (73.6%)	3 (4.1%)	15 (20.8%)
Receiving an annual flu shot	22 (30.5%)	0%	48 (66.6%)
Been without a place to stay for multiple nights (homeless)	67 (93%)	4 (5.5%)	1 (1.3%)
Have difficulty with employment due to transportation, education, skills, childcare, scheduling, etc.)	58 (80.5%)	8 (11.1%)	5 (6.9%)
Vaccinated again COVID-19	23 (31.9%)	0%	49 (68.0%)

### Primary Data (Survey) Demographics of Participants 2023

#### AGE

What is your age?	# of Replies	% of Total
17 and under	0	
18 to 25	2	
26 to 44	30	
44 to 64	29	
65 to 84	11	
85 and over	0	
<b>Total</b>	<b>72</b>	<b>100.0%</b>

#### GENDER

What is your gender?	# of Replies	% of Total
Female	68.1%	
Male	31.9%	
Prefer not to say	0%	
(blank)	0%	
<b>Total</b>	<b>72</b>	<b>100.0%</b>

#### IDENTITY

How would you identify yourself?	# of Replies	% of Total
Indian/ Native Alaskan	0	
Multicultural/ Multiracial	0	
Asian / Pacific Islander	0	
Caucasian / White	71	
Latino / Hispanic	1	
(blank)	0	

<b>Total</b>	<b>72</b>	<b>100.0%</b>
--------------	-----------	---------------

## HOUSEHOLD

<b>How would you describe your household? (Please select all that apply)</b>	<b># of Replies / % of Total</b>
<b>Married</b>	<b>48 (66%)</b>
<b>Married; Parent / Guardian with children at home</b>	<b>22 (30%)</b>
<b>Multiple adults; children no longer at home</b>	<b>0 (0%)</b>
<b>Single</b>	<b>12 (16%)</b>
<b>Divorced</b>	<b>9 (12%)</b>
<b>Widowed</b>	<b>2 (3%)</b>
<b>(blank)</b>	<b>0 (0%)</b>

## HEALTH CARE FACILITY

<b>What type of healthcare facility do you use when not feeling well or sick?</b>	<b># of Replies / % of Total</b>
<b>Clinic/Doctor's office</b>	<b>65 (90.3%)</b>
<b>Urgent Care/Acute Care</b>	<b>3 (4.2%)</b>
<b>Don't seek care/medical treatment</b>	<b>3 (4.2%)</b>
<b>Emergency Department</b>	<b>0 (0%)</b>
<b>Go out of town/county</b>	<b>1 (1.4%)</b>
<b>Public Health</b>	<b>0 (0%)</b>

## MEDICAL INFORMATION

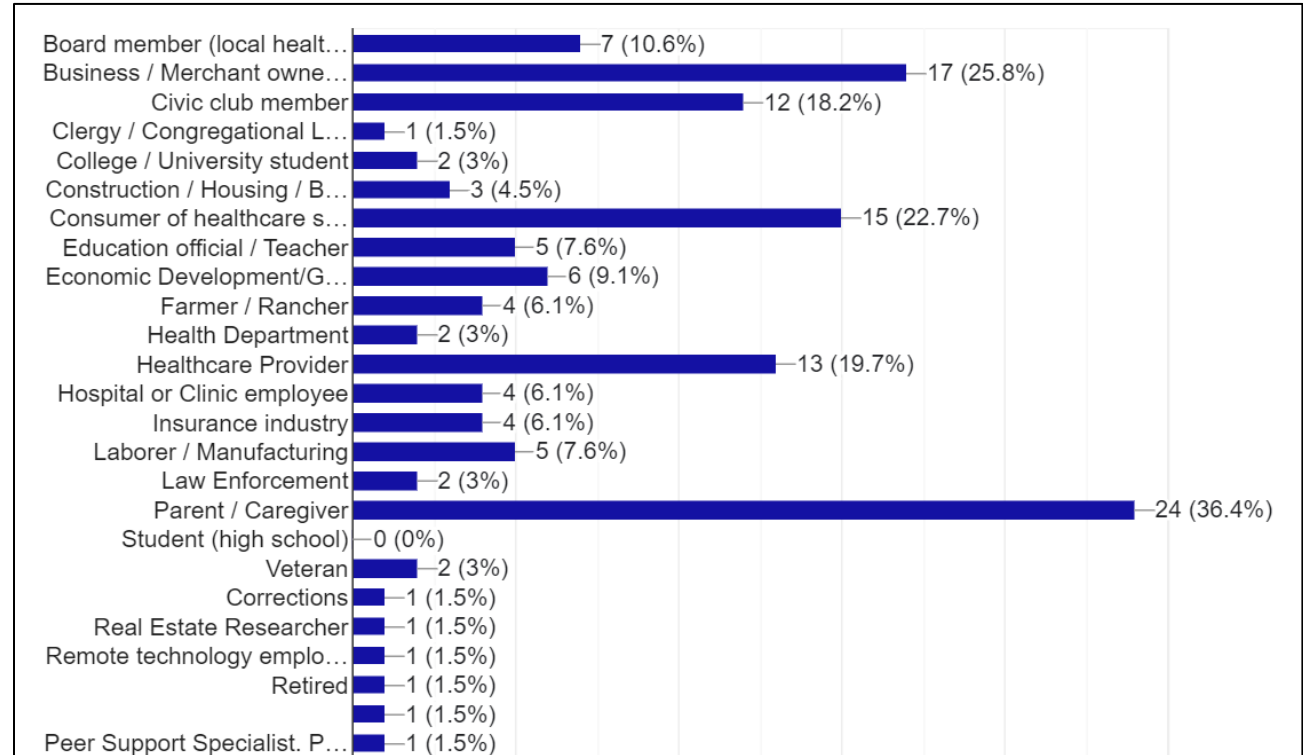
<b>Where do you get most of your medical information?</b>	<b># of Replies / % of Total</b>
<b>Doctor</b>	<b>45 (66.2%)</b>
<b>Internet</b>	<b>20 (29.4%)</b>
<b>Family</b>	<b>1 (1.5%)</b>
<b>Social Media/Television/ Radio</b>	<b>1 (1.5%)</b>
<b>Insurance Company</b>	<b>0 (0%)</b>
<b>Friend(s)</b>	<b>1 (1.5%)</b>

## INSURANCE

<b>What type of health insurance coverage is your primary plan?</b>	<b># of Replies / % of Total</b>
<b>Partially covered by employer (you and employer share cost)</b>	<b>35 (48.6%)</b>
<b>Covered by employer (employer pays total cost)</b>	<b>16 (22%)</b>
<b>Private Insurance you purchased</b>	<b>5 (6.9%)</b>
<b>Medicare</b>	<b>10 (13.9%)</b>

<b>Medicaid</b>	<b>5 (6.9%)</b>
<b>No coverage (uninsured)</b>	<b>1 (1.4%)</b>

**INVOLVEMENT IN COMMUNITY**



**Secondary Research Findings 2023**

**OVERALL STATE HEALTH RANKINGS**

#	IA Rank of 99 Counties	Definitions	Hardin Co PSA (2023)	Iowa
1	Physical Environment (57th)	Severe Housing Cost Burden	9%	12%
2	Health Factors (49th)	Adult Smoking Food Environment Index Sexually Transmitted Infections	18% 9.0 379.9	17% 8.6 478.5
3	Clinical Care (39th)	Uninsured Mammography Screening Flu Vaccinations	6% 52% 62%	6% 47% 57%
4	Social & Economic Factors (52nd)	Children in Poverty Injury Deaths	14% 65	12% 70
5	Health Outcomes (39th)	Poor or Fair Health	12%	12%
6	Health Behaviors (41st)	Adult Obesity Physical Inactivity	39% 24%	37% 23%

		Alcohol-impaired Driving Death Teen Births	21% 17	27% 16
7	Quality of life (44th)	Poor Physical Health Days Poor Mental Health Days	2.9 4.2	2.8 4.4
8	Length of life (41st)	Life Expectancy	79.1	78.7
http://www.countyhealthrankings.org				

DEMOGRAPHIC DETAILS: POPULATION AGE, GENDER, ETHIC AFFILIATION (1A)

	Population Indicator	Hardin Co PSA (2023)	State of Iowa	Trend
1a	Population, Estimate (2022)	16,567	3,200,517	
1a	Population, Census 2020	16,878	3,190,369	
1a	Persons Under 5 years, Percent	4.8%	5.9%	
1a	Persons Under 18 years, Percent	19.1%	23.1%	
1a	Persons 65 Years and Over, Percent	23.3%	17.7%	
1a	Female Persons, Percent	49.4%	49.8%	
1a	White Alone, Percent	95.5%	90.1%	
1a	Black or African American Alone, Percent	1.6%	4.3%	
1a	Hispanic or Latino, Percent	4.7%	6.7%	
1a	Foreign Born Persons, Percent	3.2%	5.5%	
1a	Language Other than English Spoken at Home, Percent, Age 5+	4.6%	8.6%	

Source: US Census – Quick Facts

<https://www.census.gov/quickfacts/fact/table/Hardincountyiowa,IA/PST045222>

DEMOGRAPHIC DETAILS: POPULATION STATUS (1B)

	Population Indicator	Hardin Co (2023)	Trend	State of Iowa
1b	Veterans	1,115		174,514
1b	Living in Same House 1 Year & Over, Percent	90.7%		86.0%
1b	Persons per Square Mile	29.6		57.1
1b	Children in Single-Parent Households, percent (County Health Rankings)	20%		21%
1b	Poverty Levels, (Iowa Health Fact Book)	9.7%		68%
1b	Limited Access to Healthy Foods (County Health Rankings)	2%		6%
1b	People 65+ with Low Access to a Grocery Store, (US Dept of Agriculture- Food Atlas)	1.25% (2019)		3.6%
1b	Voter Turnout, percent	51.56% (2022)		49.63%

(Iowa Secretary of State)			
---------------------------	--	--	--

Source: Unless stated source: US Census – Quick Facts

**ECONOMIC DETAILS (2)**

	<b>Economic Indicator</b>	<b>Hardin Co (2023)</b>	<b>Trend</b>	<b>State of Iowa</b>
2	Per Capita Money Income in Past 12 Months (20 dollars)	\$29,347		\$34,817
2	Housing Units	8,026		1,438,565
2	Persons per Household	2.31		2.42
2	Severe Housing Problems (County Health Rankings)	9%		12%
2	Retail Sales per Capita (Business Quick Facts)	\$18,895		\$14,607
2	Total Number of Firms	558		61,849
2	Unemployment (County Health Rankings)	4.2%		4.2%
2	Overall Food Insecurity Rate, 2021 (Feeding America)	7.5%		7.5%
2	Child Food Insecurity Rate, 2021 (Feeding America)	10.8%		9.4%
2	Mean Travel Time to Work (Minutes), Workers Age 16+	19.7		19.6
2	Long Commute - Driving Alone (County Health Rankings)	23%		21%

Source: Unless stated source: US Census – Quick Facts

**PUBLIC SCHOOLS HEALTH DELIVERY (3A AND 3B)**

Currently school districts are providing on-site primary health screenings and basic care.

	<b>Education Indicator</b>	<b>Hardin Co (2023)</b>	<b>Trend</b>	<b>State of Iowa</b>
3a	Students Eligible for Free Lunch (%) (US Department of Agriculture – Food Atlas)	21.7%		30.0%
3a	4-Year High School Graduation Rates (Quick Facts)	92.4%		92.8%
3a	Bachelor's Degree or Higher, Percent of Persons Age 25+, (Quick Facts)	19.7%		29.7%

	<b>Education/Health Indicators</b>	<b>Hardin Co PSA (2023)</b>
1	Number of Public-School Nurses	Provided from county school systems individually upon request of the schools or Iowa Department of Education. <a href="https://educateiowa.gov/data-">https://educateiowa.gov/data-</a>
2	School Wellness Plan in Place (Active)	
3	VISION: Number Screened / Referred to Prof / Seen by Professional	
4	HEARING: Number Screened / Referred to Prof / Seen by Professional	

5	ORAL HEALTH: Number Screened / Referred to Prof / Seen by Professional	<a href="https://educateiowa.gov/data-reporting/education-statistics-pk-12">reporting/education-statistics-pk-12</a>
6	SCOLIOSIS: Screened / Referred to Prof / Seen by Professional	
7	Students Served with No Identified Chronic Health Concerns	
8	Students Served with Identified Chronic Health Concerns	
9	Tdap Vaccine Provided to Children Age 10-18	
10	School has a Suicide Prevention Program	
11	Compliance on Required Vaccinations <ul style="list-style-type: none"> <li>● 2-year-old benchmark (DTaP, HepB, MMR, Hib, Polio, Varicella, Pneumo.)</li> <li>● Adolescent benchmark (TdapTd, HepB, MMR, Varicella, Meningo)</li> <li>● Adolescent HPV benchmark</li> </ul>	

Source: <https://educateiowa.gov/data-reporting/education-statistics-pk-12>

**MATERNAL AND INFANT HEALTH (4A AND 4B)**

Tracking maternal and infant care patterns is vital in understanding the foundation of family health.

	Health Indicator	Hardin Co (2023)	Trend	State of Iowa
4a	Mothers Who Began Prenatal Care in First Trimester (Iowa Health Fact Book)	246		Rank 50
4a	Annual Birth Outcome % Preterm (2021) (March of Dimes)	13.5% (Polk County)		10.0%
4a	Low Birth Weight (<2500 Grams) (Iowa Health Fact Book)	17		Rank 58
4a	Mothers Who Smoked During Pregnancy (Iowa Health Fact Book)	46		Rank 31
4a	Mothers under Age 20 (Iowa Health Fact Book)	12		Rank 44
4a	Out-of-Wedlock Births (Iowa Health Fact Book)	101		Rank 51
4a	Average WIC Participation (2021) ( <a href="https://datacenter.kidscount.org">https://datacenter.kidscount.org</a> )	43.7%		21%

**LIVE BIRTHS (4B)**

	Vital Statistics	Hardin County, Iowa	Trend	State of Iowa
4	Total Live Births, 2010	557		38,514
4	Total Live Births, 2011	538		38,204
4	Total Live Births, 2012	583		38,686

4	Total Live Births, 2013	548		39,013
4	Total Live Births, 2014	540		39,685
4	Total Live Births, 2015	494		39,467
4	Total Live Births, 2016	536		39,223
4	Total Live Births, 2017	505		38,408
4	Total Live Births, 2018	533		37,709
4	Total Live Births, 2019	479		37,597
4	Total Live Births, 2020	492		36,058

Source: Iowa Department of Public Health, Vital Statistics

HOSPITAL SPECIFIC DETAILS (5)

Understanding provider access and disease patterns are fundamental in healthcare delivery.

	Health Indicator	Hardin Co (2023)	Trend	State of Iowa
5	Primary Care Physicians per 1 (County Health Rankings)	3,320:1		1,360:1
5	Preventable Hospital Stays (County Health Rankings)	1,992		2,400
5	Patients Who Gave Their Hospital a Rating of 9 or 10 on a Scale from 0 (Lowest) to 10 (Highest) (CMS Hospital Compare)	66%		77%
5	Patients Who Reported Yes, They Would Definitely Recommend the Hospital (CMS Hospital Compare)	59%		75%
5	Average Time Patients Spent in the Emer. Department Before <b>Leaving from the Visit</b> , minutes (CMS Hospital Compare)	162		115
5	Medicare Hospital Spending per Patient (Medicare Spending per Beneficiary) (CMS Hospital Compare)	0.85		0.95
5	Unplanned Readmission Rate (new 2018) (CMS Hospital Compare)	13.4%		15% (national)

BEHAVIORAL AND MENTAL HEALTH PROFILE

	Health Indicator	Hardin Co (2023)	Trend	State of Iowa
6	Depression: Medicare Population (Center for Medicare and Medicaid Services)	17%		13.8%



6	Alcohol-Impaired Driving Deaths (County Health Rankings)	21%		27%
6	Poor Mental Health Days (County Health Rankings)	4.2		4.4

HEALTH BEHAVIORS PROFILE (7A)

Knowing community health risk factors and disease patterns can aid in the understanding next steps to improve health.

	Health Indicator	Hardin Co (2023)	Trend	State of Iowa
7a	Adult Obesity	39%		37%
7a	Adult Smoking	18%		17%
7a	Excessive Drinking	23%		25%
7a	Physical Inactivity	24%		23%
7a	Poor Physical Health Days	2.9		2.8
7a	Sexually Transmitted Infections (per 100,000 residents)	379.9		478.5

Source: County Health Ranking (7A)

CHRONIC HEALTH PROFILE (7B)

	Health Indicator – Medicare Population	Hardin Co (2023)	Trend	State of Iowa
7b	Asthma	2.86%		4.08%
7b	Atrial Fibrillation	9.09%		9.01%
7b	Cancer	7.73%		7.56%
7b	Chronic Kidney Disease	19.53%		20.91%
7b	COPD	10.25%		11.28%
7b	Diabetes	22.90%		24.15%
7b	Heart Failure	11.56%		12.77%
7b	Hyperlipidemia	36.92%		38.88%
7b	Hypertension	54.53%		53.62%
7b	Osteoporosis	6.63%		5.99%
7b	Stroke	2.18%		2.91%

Source: Center for Medicare and Medicaid Services (7B)

<https://nccd.cdc.gov/DHDSPAtlas/reports.aspx?geographyType=county&state=IA&countyTab#repor>

MORTALITY PROFILES (8)

The leading causes of county deaths are listed below.

	Health Indicator	Hardin Co	Trend	State of Iowa
8	Life Expectancy Females (Institute for Health Metrics and Evaluation)	82.2		81.9
8	Life Expectancy Males (Institute for Health Metrics and Evaluation)	77.3		77.5
8	Injury Deaths (Iowa Health Fact Book)	65		70

CAUSE OF DEATH

#	Causes of Death by County of Residence (2016-2020)	Hardin Co (2023)	Trend (2014)	State of Iowa Rank
	All Causes	1,123		33
1	Heart Disease	286		30
2	All Cancer	240		30
3	Lung Cancer	55		34
4	Chronic Obstructive Pulmonary Disease	61		41
5	Stroke	55		35
6	Alzheimer’s Disease	43		52
7	Accidents and Adverse Effects	43		46
8	Pneumonia/Influenza	14		65
9	Diabetes Mellitus	29		52
10	Suicide	8		68
11	Falls	23		26
12	Firearms	6		59
13	All Transportation	10		63
14	Motor Vehicle Traffic	8		68

Source: Iowa Health Fact Book

PREVENTATIVE HEALTH (COUNTY HEALTH RANKINGS)

	Health Indicator	Hardin Co (2023)	Trend	State of Iowa
9	Access to Exercise Opportunities	85%		79%
9	2-Year-Old Coverage of Individual Vaccines and Selected Vaccination Series, (Iowa Immunization Program)	75%		71.0%
9	Diabetes Prevalence	9%		9%
9	Mammography Screening	52%		47%
9	Limited Access to Healthy Food	2%		6%
9	Percent Annual Check-Up Visit with PCP	Not found		Not found

9	Percent Annual Check-Up Visit with Dentist	Not found		Not found
9	Percent Annual Check-Up Visit with Eye Doctor	Not found		Not found

UNINSURED PROFILES (SOURCE: IOWA HEALTH FACT BOOK)

	Health Indicator	Hardin Co PSA (2023)	Trend	State of Iowa Rank
10a	Uninsured (Under 65), 2023	6.5%		30%

## Inventory of Community (Service Area) Health Partners

### Hospital: Hansen Family Hospital | MercyOne Affiliate

641-648-7000

Family Medicine

#### Iowa Falls Clinic

920 South Oak Street Suite 1, Iowa Falls, Iowa  
50126  
641-648-7000

Kathleen E Haverkamp, MD  
Gregory L Ogaard, DO  
Thomas S Waters, DO  
Mahnaz Behdad, MD  
Craig Gibson, DO  
Sarah Scott, ARNP  
Lee Carlson, ARNP

#### Ackley Medical Center

1000 10th Avenue, Ackley, Iowa 50601  
641-847-2625

David L Van Gorp, MD  
Tiffany Gramblin, ARNP  
Brienne Neuberger, PA-C

#### NESCO Family Medical Clinic

112 West Main Street, Zearing, Iowa 50278  
641-487-7800

Brooke Ibeling, ARNP  
Mary F. O'Connor, ARNP

Emergency Department

#### Hansen Family Hospital | MercyOne

920 S Oak St, Iowa Falls, IA 50126

Anesthesiology

#### Hansen Family Hospital

920 S Oak St, Iowa Falls, IA 50126  
641-648-7000

Mindy Kay Miller, CRNA

Chiropractic

#### Iowa Falls Chiropractic Clinic

11323 US-65, Iowa Falls, IA 50126  
641-648-2446

Chandler Krukow, DC  
Shane Krukow, DC  
Abbey Schumacher-Porterfield, DC

#### Eldora Family Chiropractic & Wellness Center

1376 Washington St, Eldora, IA 50627  
641-939-3831

Zachary M. Stoullil, DC, CCSP  
Emily A. Stoullil, DC, CACCP

#### Ackley Chiropractic Clinic

907 Sherman Ave, Ackley, IA 50601  
641-847-3500

Kurt M. Sperfslage, DC

#### Hoover Chiropractic Clinic

711 S Oak St, Iowa Falls, IA 50126

641-648-4211

**Hanson Chiropractic Clinic**

215 Ohio Ave, Iowa Falls, IA 50126  
641-648-2255

Dentists

**Anderson Family Dentistry**

1906 Edgington Ave, Eldora, IA 50627  
641-939-7900  
Sara Anderson, DDS  
Kale Floyd, DDS

**Eldora Family Dentistry & Orthodontics**

1310 Washington St, Eldora, IA 50627  
641-939-3214  
Mitchell Murphy, DDS  
Dan Scarrow, DDS

Home Care Agencies

**Greenbelt Home Care**

1707 21st St, Eldora, IA 50627  
641-939-8444

Hospitalist

**Hansen Family Hospital**

920 S Oak St, Iowa Falls, IA 50126  
641-648-7000  
Lindsay Vogel, ARNP

Nursing Home/Assisted Living

**Estabrook Lodge**

2302 Rick Collins Way, Eldora, IA 50627  
641-939-7711

**Grand JiVante**

502 Butler St, Ackley, IA 50601  
641-847-3531

**Ashbrook Assisted Living**

1121 N Fremont St, Iowa Falls, IA 50126  
641-648-8080

**Eldora Specialty Care**

1510 22nd St, Eldora, IA 50627  
641-939-3491

**Hubbard Care Center**

403 S State St, Hubbard, IA 50122  
641-864-3264

Ophthalmology/Optomestrist

**Vision Health Center**

1317 12th St #1722, Eldora, IA 50627  
641-939-2020

Veterans Care

**Hardin County Veterans Affairs**

1201 14th Ave, Eldora, IA 50627  
641-939-8239

Specialists from Outside Hardin County:

**Audiology**

Hearing Associates  
Stuart Trembath, MA, CCC-A  
800-621-6424

**Cardiology**

Iowa Heart  
888-591-9247

Mason City Clinic

Muhammad M. Al Sharif, DO  
Denisa Hagau, MD  
800-622-1411

**Dermatology**

Radiant Complexions Dermatology Clinics  
Paiten Calvert, ARNP  
515-232-8844

**ENT**

Mason City Clinic  
Vishram Jalukar, MD  
800-622-1411

**General Surgery**

Mason City Clinic  
Caitlin Lund, DO  
641-494-5260

**Neurology**

MercyOne North Iowa  
Christian Ostrander, PA  
641-428-6999

**Neurosurgery**

MercyOne North Iowa  
Solomon Ondoma, MD  
641-428-7847

**OB/GYN**

MercyOne North Iowa  
Thoo H. Tan, DO  
877-422-5100

**Ophthalmology**

Wolfe Clinic  
Steven Anderson, MD  
800-642-6605

**Orthopedics**

Mason City Clinic  
Darron Jones, MD  
Matt McBride, PA  
641-494-5210

**Podiatry**

Mason City Clinic  
Tyler Mulkey, DPM  
641-494-5210

Northeast Iowa Podiatry

Stephen Solomon, DPM  
319-234-2644

**Psychiatry**

MercyOne North Iowa Psychiatry  
Mindy Struthoff, ARNP  
641-494-5170

**Rheumatology**

Sam Dalvi, MD  
Bojana Jovanovic, MD  
641-648-7000

**Urology**

Mason City Clinic  
Christopher Adams, MD  
Steven Thoma, MD  
641-494-5280

**Wound Care**

Restorix  
641-323-2060

None:

**Allergy**

**Audiology**

**Oncology**

**Pediatrics**

**Gastroenterology**

**Endocrinology**

**Infectious Disease**

**Pulmonology**

**Critical Care**

**Radiology**

**Community (Service Area) Resources – Inventory of Services**

**Inventory of Health Services – Hanson Family Health Center, MercyOne (Hospital) and Hardin County Public Health, Iowa**

<b>Inventory of Health Services – MercyOne/ Hanson Family Health Center/ Public Health Department, and Primary Service Area (Hardin County, IA)</b>				
<b>Cat</b>	<b>Healthcare Services Offered in County: Yes / No</b>	<b>Hanson Family</b>	<b>Health Dept</b>	<b>County</b>
<b>Clinic</b>	<b>Primary Care</b>	<b>Yes</b>	<b>No</b>	<b>Yes</b>
<b>Hosp</b>	<b>Alzheimer Center</b>	<b>No</b>	<b>No</b>	<b>Yes</b>
<b>Hosp</b>	<b>Ambulatory Surgery Centers</b>	<b>Yes</b>	<b>No</b>	<b>Yes</b>
<b>Hosp</b>	<b>Arthritis Treatment Center</b>	<b>No</b>	<b>No</b>	<b>No</b>
<b>Hosp</b>	<b>Bariatric/Weight Control Services</b>	<b>No</b>	<b>Yes</b>	<b>No</b>
<b>Hosp</b>	<b>Birthing/LDR/LDRP Room/ Obstetrics</b>	<b>Yes</b>	<b>No</b>	<b>Yes</b>
<b>Hosp</b>	<b>Breast Cancer</b>	<b>Yes</b>	<b>No</b>	<b>Yes</b>
<b>Hosp</b>	<b>Burn Care</b>	<b>No</b>	<b>No</b>	<b>No</b>
<b>Hosp</b>	<b>Cardiac Rehabilitation</b>	<b>Yes</b>	<b>No</b>	<b>Yes</b>
<b>Hosp</b>	<b>Cardiac Surgery</b>	<b>No</b>	<b>No</b>	<b>No</b>
<b>Hosp</b>	<b>Cardiology Services</b>	<b>Yes</b>	<b>No</b>	<b>Yes</b>
<b>Hosp</b>	<b>Case Management</b>	<b>Yes</b>	<b>Yes</b>	<b>Yes</b>
<b>Hosp</b>	<b>Chaplaincy/Pastoral Care Services</b>	<b>Yes</b>	<b>No</b>	<b>Yes</b>
<b>Hosp</b>	<b>Chemotherapy</b>	<b>Yes</b>	<b>No</b>	<b>Yes</b>
<b>Hosp</b>	<b>Colonoscopy</b>	<b>Yes</b>	<b>No</b>	<b>Yes</b>
<b>Hosp</b>	<b>Crisis Prevention</b>	<b>No</b>	<b>Yes</b>	<b>Yes</b>
<b>Hosp</b>	<b>CT Scanner</b>	<b>Yes</b>	<b>No</b>	<b>Yes</b>
<b>Hosp</b>	<b>Diagnostic Radioisotope Facility</b>	<b>Yes</b>	<b>No</b>	<b>No</b>
<b>Hosp</b>	<b>Diagnostic/Invasive Catheterization</b>	<b>No</b>	<b>No</b>	<b>No</b>
<b>Hosp</b>	<b>Enrollment Assistance Services</b>	<b>Yes</b>	<b>No</b>	<b>Yes</b>
<b>Hosp</b>	<b>Full Field Digital Mammography (FFDM)</b>	<b>Yes</b>	<b>No</b>	<b>Yes</b>
<b>Hosp</b>	<b>Genetic Testing/Counseling</b>	<b>No</b>	<b>No</b>	<b>No</b>
<b>Hosp</b>	<b>Geriatric Services</b>	<b>Yes</b>	<b>Yes</b>	<b>Yes</b>
<b>Hosp</b>	<b>Heart transplant</b>	<b>No</b>	<b>No</b>	<b>No</b>
<b>Hosp</b>	<b>Hemodialysis</b>	<b>No</b>	<b>No</b>	<b>Yes</b>
<b>Hosp</b>	<b>HIV/AIDS Services</b>	<b>No</b>	<b>No</b>	<b>No</b>
<b>Hosp</b>	<b>Image-Guided Radiation Therapy (IGRT)</b>	<b>No</b>	<b>No</b>	<b>No</b>
<b>Hosp</b>	<b>Inpatient Acute Care - Hospital Services</b>	<b>Yes</b>	<b>No</b>	<b>Yes</b>
<b>Hosp</b>	<b>Intensity-Modulated Radiation Therapy (IMRT) 161</b>	<b>No</b>	<b>No</b>	<b>No</b>
<b>Hosp</b>	<b>Intensive Care Unit</b>	<b>Yes</b>	<b>No</b>	<b>No</b>
<b>Hosp</b>	<b>Intermediate Care Unit</b>	<b>Yes</b>	<b>No</b>	<b>Yes</b>
<b>Hosp</b>	<b>Interventional Cardiac Catheterization</b>	<b>No</b>	<b>No</b>	<b>No</b>
<b>Hosp</b>	<b>Isolation room</b>	<b>Yes</b>	<b>No</b>	<b>Yes</b>
<b>Hosp</b>	<b>Kidney transplant/ surgery</b>	<b>No</b>	<b>No</b>	<b>No</b>
<b>Hosp</b>	<b>Liver transplant/ surgery</b>	<b>No</b>	<b>No</b>	<b>No</b>
<b>Hosp</b>	<b>Lung transplant/ surgery</b>	<b>No</b>	<b>No</b>	<b>No</b>
<b>Hosp</b>	<b>Magnetic Resonance Imaging (MRI)</b>	<b>Yes</b>	<b>No</b>	<b>Yes</b>
<b>Hosp</b>	<b>Mobile Health Services</b>	<b>No</b>	<b>No</b>	<b>Yes</b>
<b>Hosp</b>	<b>Multi-slice Spiral Computed Tomography (&lt;64 slice CT)</b>	<b>Yes</b>	<b>No</b>	<b>Yes</b>

<b>Inventory of Health Services – MercyOne/ Hanson Family Health Center/ Public Health Department, and Primary Service Area (Hardin County, IA)</b>				
<b>Cat</b>	<b>Healthcare Services Offered in County: Yes / No</b>	<b>Hanson Family</b>	<b>Health Dept</b>	<b>County</b>
Hosp	Multi-slice Spiral Computed Tomography (<64+ slice CT)	No	No	No
Hosp	Neonatal	No	No	No
Hosp	Neurological Services	No	No	No
Hosp	Occupational Health Services	Yes	No	Yes
Hosp	Oncology Services	Yes	No	Yes
Hosp	Orthopedic Services	Yes	No	Yes
Hosp	Outpatient Surgery	Yes	No	Yes
Hosp	Pain Management	Yes	No	No
Hosp	Palliative Care Program	Yes	No	No
Hosp	Pediatric Primary Care	Yes	No	Yes
Hosp	Physical Rehabilitation	Yes	No	Yes
Hosp	Positron Emission Tomography/CT (PET) (PET/CT)	Yes	No	Yes
Hosp	Psychiatric Services	Yes	No	Yes
Hosp	Radiology, Diagnostic & Therapeutic	Yes	No	Yes
Hosp	Reproductive Health	Yes	No	No
Hosp	Robotic Surgery	No	No	Yes
Hosp	Sleep Center	Yes	No	Yes
Hosp	Social Work Services	Yes	Yes	Yes
Hosp	Sports Medicine	Yes	No	Yes
Hosp	Swing Bed Services	Yes	No	Yes
Hosp	Transplant Services	No	No	No
Hosp	Trauma Center-Level IV	Yes	No	Yes
Hosp	Ultrasound	Yes	No	Yes
Hosp	Women's Health Services	Yes	Yes	Yes
Hosp	Wound Care	Yes	No	Yes
SR	Adult Day Care Program	No	No	No
SR	Assisted Living	Yes	No	Yes
SR	Home Health Services	Yes	Yes	Yes
SR	Hospice	Yes	No	Yes
SR	Long-Term Care and Nursing Home Services	Yes	No	Yes
SR	Retirement Housing	No	No	Yes
SR	Skilled Nursing Care	Yes	No	Yes
ER	Emergency Services	Yes	No	Yes
ER	Urgent Care Center	Yes	No	No
ER	Ambulance Services	Yes	No	Yes
SERV	Alcoholism-Drug Abuse	No	No	Yes
SERV	Blood Donor Center	No	No	No
SERV	Chiropractic Services	No	No	Yes
SERV	Complementary Medicine Services	No	Yes	No
SERV	Dental Services	No	Yes	Yes

Inventory of Health Services – MercyOne/ Hanson Family Health Center/ Public Health Department, and Primary Service Area (Hardin County, IA)				
Cat	Healthcare Services Offered in County: Yes / No	Hanson Family	Health Dept	County
SERV	Fitness Center	No	No	Yes
SERV	Health Education Classes/ Fairs/ Support Groups	Yes	Yes	Yes
SERV	Health Information Center	Yes	Yes	Yes
SERV	Health Screenings	Yes	Yes	Yes
SERV	Meals on Wheels	No	Yes	Yes
SERV	Nutrition Programs	Yes	Yes	Yes
SERV	Patient Education Center	Yes	No	No
SERV	Teen Outreach Services	No	No	Yes
SERV	Tobacco Treatment/Cessation Program	Yes	By Referral	Yes
SERV	Transportation to Health Facilities	No	No	Yes
SERV	Wellness Program	Yes	Yes	Yes

### Providers Delivering Care – Hardin County, Iowa

#### CARE DELIVERY

Care Providers			
# of FTE Providers working in Primary Service Area (PSA)	FTE Physicians		FTE Allied Staff
	PSA Based DRs	Visiting DRs Commun.	PSA Based PA / NP
<b>Primary Care:</b>			
Family Practice	21		9
Internal Medicine/Geriatrician	3		
Obstetrics/Gynecology	11		
Pediatrics	0		
<b>Medicine Specialists/ Visiting Specialist:</b>			
Allergy/Immunology	1		
Audiology	2		1
Cardiology	2		1
Dermatology	1		2
Endocrinology	0		
ENT (Ear/Nose/Throat)	1		
Gastroenterology	0		
Oncology/Radiology	2		1
Orthopedics /Surgery	9		2
Orthotics/Prosthetics	0		



Care Providers			
	FTE Physicians		FTE Allied Staff
# of FTE Providers working in Primary Service Area (PSA)	PSA Based DRs	Visiting DRs Commun.	PSA Based PA / NP
Infectious Diseases	0		
Neonatal/Perinatal	0		
Nephrology	2		
Neurology			1
Occupational Medicine	1		1
Physical Medicine/Rehab			
Podiatry	1		
Psychiatry	0		
Pulmonary	1		
Rheumatology	1		
<b>Surgery Specialists:</b>			
General Surgery/Colon/Oral	2		1
Neurosurgery	0		
Ophthalmology/Optomety	1		
Otolaryngology (ENT)	1		
Plastic/Reconstructive	0		
Thoracic/Cardiovascular/Vascular	0		
Urology	2		
Women's Health			1
Vascular Surgery	1		
<b>Hospital Based:</b>			
Anesthesia/Pain	2		4
Electromyography			
Emergency	5		1
Radiology	2		
Pathology		2	
Hospitalist	3		
<b>Non-Hospital Based (Community):</b>			
Chiropractor		7	
Optometrist		5	
Dentist		11	

## Service Directory

### EMERGENCY NUMBERS

<b>Police/ Sheriff</b>	<b>911</b>
<b>Fire</b>	<b>911</b>
<b>Ambulance</b>	<b>911</b>

### NON-EMERGENCY /MUNICIPAL NUMBERS (HARDIN COUNTY, IOWA)

<b>Hardin County Sheriff (Police)</b>	<b>641-939-8189</b>
<b>EMS</b>	<b>641-939-8190</b>
<b>Fire (Eldora)</b>	<b>641-939-2393</b>
<b>Police (Eldora)</b>	<b>641-939-2393</b>

### QUICK REFERENCE PHONE GUIDE

<b>Action Now</b>	<b>1-800-622-5168</b>
<b>Al-Anon "Free to Be Me"</b>	<b>(515) 462-4253</b>
<b>Alcoholics Anonymous</b>	<b>(515) 282-8550</b>
<b>Alzheimer's Disease Helpline</b>	<b>1-800-272-3900</b>
<b>American Cancer Society</b>	<b>1-800-227-2345</b>
<b>American Red Cross</b>	<b>1-800-887-2988</b>
<b>Arthritis Foundation</b>	<b>1-866-378-0636</b>
<b>Battered Women</b>	<b>1-800-433-SAFE</b>
<b>Child Abuse Hotline</b>	<b>1-800-795-9606</b>
<b>Dependent Adult Abuse Hotline</b>	<b>1-800-362-2178</b>
<b>Dependent Adult and Child Abuse</b>	<b>1-800-652-9516</b>
<b>Domestic Abuse Hotline</b>	<b>1-800-942-0333</b>
<b>First Call for Help</b>	<b>(515) 246-6555</b>
<b>Foundation Through Crisis</b>	<b>1-800-332-4224</b>
<b>Gambling Hotline</b>	<b>1-800-238-7633</b>
<b>Iowa Arson/Crime Hotline</b>	<b>1-800-532-1459</b>
<b>Iowa Child Abuse Reporting Hotline</b>	<b>1-800-362-2178</b>
<b>Iowa State Patrol Emergency</b>	<b>1-800-525-5555</b>
<b>Medicare</b>	<b>1-800-MEDICARE</b>
<b>Mental Health Information and Referral</b>	<b>1-800-562-4944</b>
<b>National Alcohol Hotline</b>	<b>1-800-252-6465</b>
<b>National Center for Missing and Exploited Children</b>	<b>1-800-THE LOST</b>
<b>National Institute on Drugs</b>	<b>1-800-662-4537</b>
<b>Poison Control</b>	<b>1-800-222-1222</b>

<b>Senior Health Insurance Info Program (SHIIP)</b>	<b>1-800-351-4664</b>
<b>Substance Abuse Information &amp; Treatment</b>	<b>1-800-662-HELP</b>
<b>Suicide Prevention Hotline</b>	<b>1-800-SUICIDE</b>
Teen Line (Red Cross)	<b>1-800-443-8336</b>

## GENERAL ONLINE HEALTH RESOURCES

### Doctors and Dentists—General

[AMA Physician Select: Online Doctor Finder](#) (American Medical Association) [DocFinder](#) (Administrators in Medicine) [Find a Dentist](#) (Academy of General Dentistry) [Find a Dentist: ADA Member Directory](#) (American Dental Association) [Physician Compare](#) (Centers for Medicare & Medicaid Services)

### Hospitals and Clinics—General

[Find a Health Center](#) (Health Resources and Services Administration) [Find a Provider: TRICARE Provider Directories](#) (TRICARE Management Activity) [Hospital Quality Compare](#) (Centers for Medicare & Medicaid Services)

### Doctors and Dentists—Specialists

[ACOG's Physician Directory](#) (American College of Obstetricians and Gynecologists) [ACR: Geographic Membership Directory](#) (American College of Rheumatology) [American College of Surgeons Membership Directory](#) (American College of Surgeons) [American Osteopathic Association D.O. Database](#) (American Osteopathic Association) [ASGE: Find a Doctor](#) (American Society for Gastrointestinal Endoscopy) [Cancer Genetics Services Directory](#) (National Cancer Institute) [Child and Adolescent Psychiatrist Finder](#) (American Academy of Child and Adolescent Psychiatry) [Dystonia: Find a Health Care Professional](#) (Dystonia Medical Research Foundation) [Expert Locator: Immunologists](#) (Jeffrey Modell Foundation) [Find a Dermatologic Surgeon](#) (American Society for Dermatologic Surgery) [Find a Dermatologist](#) (American Academy of Dermatology) [Find a Gastroenterologist](#) (American College of Gastroenterology) [Find a Gynecologic Oncologist](#) (Society of Gynecologic Oncologists) [Find a Hand Surgeon](#) (American Society for Surgery of the Hand) [Find a Hematologist](#) (American Society of Hematology) [Find a Neurologist](#) (American Academy of Neurology) [Find a Pediatric Dentist](#) (American Academy of Pediatric Dentistry) [Find a Pediatrician or Pediatric Specialist](#) (American Academy of Pediatrics) [Find a Periodontist](#) (American Academy of Periodontology) [Find a Physical Medicine & Rehabilitation Physician](#) (American Academy of Physical Medicine and Rehabilitation) [Find a Plastic Surgeon](#) (American Society of Plastic Surgeons) [Find a Podiatrist](#) (American Podiatric Medical Association) [Find a Thyroid Specialist](#) (American Thyroid Association) [Find a Urologist](#) (American Urological Association) [Find an ACFAS Physician](#) (American College of Foot and Ankle Surgeons) [Find an Allergist/Immunologist: Search](#) (American Academy of Allergy, Asthma, and Immunology) [Find an Endocrinologist](#) (Hormone Health Network) [Find an Eye M.D.](#) (American Academy of Ophthalmology) [Find an Interventional Radiologist](#) (Society of Interventional Radiology) [Find an Oncologist](#) (American Society of Clinical Oncology) [Find an Oral and Maxillofacial Surgeon](#) (American Association of Oral and Maxillofacial Surgeons) [Find an Orthopedic Foot and Ankle MD](#) (American Orthopedic Foot and Ankle Society) [Find an Otolaryngologist \(ENT\)](#) (American Academy of Otolaryngology--Head and Neck Surgery) [Finding an Eye Care Professional](#) (National Eye Institute) [GI Locator Service](#) (American Gastroenterological Association)

### Other Healthcare Providers

[AMTA's Find a Massage Therapist](#) (American Massage Therapy Association) [Cancer Genetics Services Directory](#) (National Cancer Institute) [Find a Diabetes Educator](#) (American Association of Diabetes Educators) [Find a Genetic Counselor](#) (National Society of Genetic Counselors) [Find a Midwife](#) (American College of Nurse-Midwives) [Find a](#)

[Nurse Practitioner](#) (American Academy of Nurse Practitioners) [Find a Physical Therapist](#) (American Physical Therapy Association) [Find a Professional: Online Directory of Audiology and Speech-Language Pathology Programs](#) (American Speech-Language-Hearing Association) [Find a Registered Dietitian](#) (Academy of Nutrition and Dietetics) [Find a Therapist](#) (Anxiety Disorders Association of America) [Find an Audiologist](#) (American Academy of Audiology) [Manual Lymphatic Drainage Therapists](#) (National Lymphedema Network) [National Register of Health Service Providers in Psychology](#) (National Register of Health Service Providers in Psychology) [NCCAOM: Find Nationally Certified Practitioners](#) (National Certification Commission for Acupuncture and Oriental Medicine) [Search for an Emergency Contraception Provider in the United States](#) (Princeton University, Office of Population Research)

### **Hospitals and Clinics—Specialized**

[Accredited Birth Centers](#) (Commission for the Accreditation of Birth Centers) [Alzheimer's Disease Research Centers](#) (National Institute on Aging) [Cystic Fibrosis Foundation: Find a Chapter](#) (Cystic Fibrosis Foundation) [Cystic Fibrosis Foundation: Find an Accredited Care Center](#) (Cystic Fibrosis Foundation) [Dialysis Facility Compare](#) (Centers for Medicare & Medicaid Services) [FDA Certified Mammography Facilities](#) (Food and Drug Administration) [Find a Free Clinic](#) (National Association of Free Clinics) [Find an Indian Health Service Facility](#) (Indian Health Service) [Find Treatment Centers](#) (American Cancer Society) [Genetics Clinic Directory Search](#) (University of Washington) [Locate a Sleep Center in the United States by Zip Code](#) (American Academy of Sleep Medicine) [MDA ALS Centers](#) (Muscular Dystrophy Association) [Mental Health Services Locator](#) (Substance Abuse and Mental Health Services Administration) [NCI Designated Cancer Centers](#) (National Cancer Institute) [Neurofibromatosis Specialists](#) (Children's Tumor Foundation) [Post-Polio Directory 2011: Post-Polio Clinics, Health Professionals, Support Groups](#) (Post-Polio Health International including International Ventilator Users Network) [Spina Bifida Clinic Directory](#) (Spina Bifida Association of America) [Substance Abuse Treatment Facility Locator](#) (Substance Abuse and Mental Health Services Administration) [Transplant Center Search Form](#) (BMT InfoNet) [U.S. NMDP Transplant Centers](#) (National Marrow Donor Program) [VA Health Care Facilities Locator & Directory](#) (Veterans Health Administration) [Where to Donate Blood](#) (AABB) [Where to Donate Cord Blood](#) (National Marrow Donor Program)

### **Other Healthcare Facilities and Services**

[Alzheimer's Disease Resource Locator](#) (Fisher Center for Alzheimer's Research Foundation) [American College of Radiology Accredited Facility Search](#) (American College of Radiology) [APA District Branch / State Association Directory](#) (American Psychiatric Association) [Directory of Organizations \(Deafness and Communication Disorders\)](#) (National Institute on Deafness and Other Communication Disorders) [Dog Guide Schools in the United States](#) (American Foundation for the Blind) [Eldercare Locator](#) (Dept. of Health and Human Services) [Find a Hospice or Palliative Care Program](#) (National Hospice and Palliative Care Organization) [Find Services \(for People with Vision Loss\)](#) (American Foundation for the Blind) [Find Urgent Care Centers by State](#) (Urgent Care Association of America) [Genetic Testing Laboratory Directory](#) (University of Washington) [Home Health Compare](#) (Centers for Medicare & Medicaid Services) [Medicare: Helpful Contacts](#) (Centers for Medicare & Medicaid Services) [Muscular Dystrophy Association Clinics and Services](#) (Muscular Dystrophy Association) [National Foster Care and Adoption Directory Search](#) (Children's Bureau) [Nursing Home Compare](#) (Centers for Medicare & Medicaid Services) [Organizations That Offer Support Services](#) (National Cancer Institute) [Poison Control Centers](#) (American Association of Poison Control Centers) [Resources and Information for Parents about Braille](#) (American Foundation for the Blind) [State-Based Physical Activity Program Directory](#) (Centers for Disease Control and Prevention) [TSA Chapters in the USA](#) (Tourette Syndrome Association) [Violence against Women: Resources by State](#) (Dept. of Health and Human Services, Office on Women's Health) [Where to Find Hair Loss Accessories and Breast Cancer Products](#) (American Cancer Society)

SOURCE: MedlinePlus provides links to directories to help you find libraries, health professionals, services, and facilities. NLM does not endorse or recommend the organizations that produce these directories, nor the individuals or organizations that are included in the directories.

## DATA DETAILS

### CHA Survey Detailed Survey, Findings (Primary Research)



Hardin County  
Community Health As

## HEALTHCARE PERCEPTIONS & SATISFACTION for HARDIN COUNTY, IOWA

The leadership of Hardin County (Iowa) Public Health Department invite you to help improve the care and services of our community. Please help by answering these few short questions. Please answer honestly and your responses will be kept confidential.

The survey will take approximately 10 minutes, please allow enough time for your responses. Thank you again for your time and information to approve the health of our communities.

*\* Indicates required question*

1. In general, how would you rate the overall quality of the health care delivered to your community? \*

*Mark only one oval per row.*

	Very Good	Good	Fair	Poor	Very Poor
<b>Overall quality of care</b>	<input type="radio"/>	<input type="radio"/>	<input type="radio"/>	<input type="radio"/>	<input type="radio"/>

2. How would you rate the following health services? (Please select one box for each row)

*Mark only one oval per row.*

	Very Good	Good	Fair	Poor	Very Poor	Not Applicable (NA)
<b>Ambulance (Emergency Response)</b>	<input type="radio"/>	<input type="radio"/>	<input type="radio"/>	<input type="radio"/>	<input type="radio"/>	<input type="radio"/>
<b>Children's health</b>	<input type="radio"/>	<input type="radio"/>	<input type="radio"/>	<input type="radio"/>	<input type="radio"/>	<input type="radio"/>
<b>Chiropractor</b>	<input type="radio"/>	<input type="radio"/>	<input type="radio"/>	<input type="radio"/>	<input type="radio"/>	<input type="radio"/>
<b>Dentist(s)</b>	<input type="radio"/>	<input type="radio"/>	<input type="radio"/>	<input type="radio"/>	<input type="radio"/>	<input type="radio"/>
<b>Eye Doctor / Optometrist</b>	<input type="radio"/>	<input type="radio"/>	<input type="radio"/>	<input type="radio"/>	<input type="radio"/>	<input type="radio"/>
<b>Family Planning Services</b>	<input type="radio"/>	<input type="radio"/>	<input type="radio"/>	<input type="radio"/>	<input type="radio"/>	<input type="radio"/>
<b>Family Practice (Medical) Services</b>	<input type="radio"/>	<input type="radio"/>	<input type="radio"/>	<input type="radio"/>	<input type="radio"/>	<input type="radio"/>
<b>Home Care Agencies / Home Health</b>	<input type="radio"/>	<input type="radio"/>	<input type="radio"/>	<input type="radio"/>	<input type="radio"/>	<input type="radio"/>
<b>Hospice</b>	<input type="radio"/>	<input type="radio"/>	<input type="radio"/>	<input type="radio"/>	<input type="radio"/>	<input type="radio"/>
<b>Hospital Services</b>	<input type="radio"/>	<input type="radio"/>	<input type="radio"/>	<input type="radio"/>	<input type="radio"/>	<input type="radio"/>
<b>Mental Health Services</b>	<input type="radio"/>	<input type="radio"/>	<input type="radio"/>	<input type="radio"/>	<input type="radio"/>	<input type="radio"/>
<b>Nursing Home</b>	<input type="radio"/>	<input type="radio"/>	<input type="radio"/>	<input type="radio"/>	<input type="radio"/>	<input type="radio"/>

3. In your opinion, how much of a problem are the following causes of poor health in your community? (please select one box for each row)

*Mark only one oval per row.*

	Not a problem	Somewhat of a problem	Major problem	Don't know
<b>Cancer</b>	<input type="radio"/>	<input type="radio"/>	<input type="radio"/>	<input type="radio"/>
<b>Diabetes</b>	<input type="radio"/>	<input type="radio"/>	<input type="radio"/>	<input type="radio"/>
<b>Drug Abuse</b>	<input type="radio"/>	<input type="radio"/>	<input type="radio"/>	<input type="radio"/>
<b>Substance Abuse</b>	<input type="radio"/>	<input type="radio"/>	<input type="radio"/>	<input type="radio"/>
<b>Heart Disease</b>	<input type="radio"/>	<input type="radio"/>	<input type="radio"/>	<input type="radio"/>
<b>Mental Illness</b>	<input type="radio"/>	<input type="radio"/>	<input type="radio"/>	<input type="radio"/>
<b>Obesity</b>	<input type="radio"/>	<input type="radio"/>	<input type="radio"/>	<input type="radio"/>
<b>Pneumonia / Flu</b>	<input type="radio"/>	<input type="radio"/>	<input type="radio"/>	<input type="radio"/>
<b>Respiratory Disease</b>	<input type="radio"/>	<input type="radio"/>	<input type="radio"/>	<input type="radio"/>
<b>Sexually Transmitted Diseases</b>	<input type="radio"/>	<input type="radio"/>	<input type="radio"/>	<input type="radio"/>
<b>Stroke</b>	<input type="radio"/>	<input type="radio"/>	<input type="radio"/>	<input type="radio"/>
<b>Suicide</b>	<input type="radio"/>	<input type="radio"/>	<input type="radio"/>	<input type="radio"/>
<b>Trauma</b>	<input type="radio"/>	<input type="radio"/>	<input type="radio"/>	<input type="radio"/>

<b>Pharmacy</b>	<input type="radio"/>	<input type="radio"/>	<input type="radio"/>	<input type="radio"/>	<input type="radio"/>	<input type="radio"/>
<b>Public Health</b>	<input type="radio"/>	<input type="radio"/>	<input type="radio"/>	<input type="radio"/>	<input type="radio"/>	<input type="radio"/>
<b>School Nurse</b>	<input type="radio"/>	<input type="radio"/>	<input type="radio"/>	<input type="radio"/>	<input type="radio"/>	<input type="radio"/>
<b>Specialist (physician) care</b>	<input type="radio"/>	<input type="radio"/>	<input type="radio"/>	<input type="radio"/>	<input type="radio"/>	<input type="radio"/>
<b>Teen health (drinking, abuse, safety, pregnancy)</b>	<input type="radio"/>	<input type="radio"/>	<input type="radio"/>	<input type="radio"/>	<input type="radio"/>	<input type="radio"/>

4. Other health problems in your community not listed above?

\_\_\_\_\_

\_\_\_\_\_

\_\_\_\_\_

\_\_\_\_\_

\_\_\_\_\_



5. In your opinion, what areas need additional education or attention in our community?  
(Please select all that apply)

*Check all that apply.*

- Abuse / Violence
- Aging (Dementia)
- Alcohol
- Alternative Medicine
- Children's Health
- Chronic Diseases (example Diabetes or Heart Failure)
- Drugs/Illegal substances
- Family Planning / Birth Control
- Lead Exposure
- Mental Illness
- Neglect
- Nutrition
- Obesity
- Ozone / Air Quality
- Pain Management
- Poverty
- Preventative Health
- Sexually Transmitted Diseases
- Suicide
- Teen Health (drinking, abuse, safety, pregnancy)
- Tobacco Use
- Uninsured / Underinsured
- Vaccinations
- Water Quality
- Wellness Education
- Other: \_\_\_\_\_

6. How would you rate each of the following in your community?

*Mark only one oval per row.*

	Very Good	Good	Fair	Poor	Very Poor	Not aware of the services
<b>Caregiver training programs</b>	<input type="radio"/>	<input type="radio"/>	<input type="radio"/>	<input type="radio"/>	<input type="radio"/>	<input type="radio"/>
<b>Early childhood development programs</b>	<input type="radio"/>	<input type="radio"/>	<input type="radio"/>	<input type="radio"/>	<input type="radio"/>	<input type="radio"/>
<b>Prevention of falls</b>	<input type="radio"/>	<input type="radio"/>	<input type="radio"/>	<input type="radio"/>	<input type="radio"/>	<input type="radio"/>
<b>Obesity prevention and treatment</b>	<input type="radio"/>	<input type="radio"/>	<input type="radio"/>	<input type="radio"/>	<input type="radio"/>	<input type="radio"/>
<b>Spiritual health support</b>	<input type="radio"/>	<input type="radio"/>	<input type="radio"/>	<input type="radio"/>	<input type="radio"/>	<input type="radio"/>
<b>Drug Abuse programs</b>	<input type="radio"/>	<input type="radio"/>	<input type="radio"/>	<input type="radio"/>	<input type="radio"/>	<input type="radio"/>
<b>Reduction of opiate/narcotic use</b>	<input type="radio"/>	<input type="radio"/>	<input type="radio"/>	<input type="radio"/>	<input type="radio"/>	<input type="radio"/>
<b>Alcohol use and treatment programs</b>	<input type="radio"/>	<input type="radio"/>	<input type="radio"/>	<input type="radio"/>	<input type="radio"/>	<input type="radio"/>
<b>Transportation (bus) services in community</b>	<input type="radio"/>	<input type="radio"/>	<input type="radio"/>	<input type="radio"/>	<input type="radio"/>	<input type="radio"/>
<b>Violence prevention</b>	<input type="radio"/>	<input type="radio"/>	<input type="radio"/>	<input type="radio"/>	<input type="radio"/>	<input type="radio"/>

7. How do you feel your local health care providers are doing in addressing the health needs of the following age groups? (Please select one box for each row)

*Mark only one oval per row.*

	Very Good	Good	Fair	Poor	Very Poor	Not Applicable (NA)
<b>Infants</b>	<input type="radio"/>	<input type="radio"/>	<input type="radio"/>	<input type="radio"/>	<input type="radio"/>	<input type="radio"/>
<b>Age 1 - 12</b>	<input type="radio"/>	<input type="radio"/>	<input type="radio"/>	<input type="radio"/>	<input type="radio"/>	<input type="radio"/>
<b>Age 13 - 17</b>	<input type="radio"/>	<input type="radio"/>	<input type="radio"/>	<input type="radio"/>	<input type="radio"/>	<input type="radio"/>
<b>Age 18 - 25</b>	<input type="radio"/>	<input type="radio"/>	<input type="radio"/>	<input type="radio"/>	<input type="radio"/>	<input type="radio"/>
<b>Age 26 - 44</b>	<input type="radio"/>	<input type="radio"/>	<input type="radio"/>	<input type="radio"/>	<input type="radio"/>	<input type="radio"/>
<b>Age 45 - 64</b>	<input type="radio"/>	<input type="radio"/>	<input type="radio"/>	<input type="radio"/>	<input type="radio"/>	<input type="radio"/>
<b>Age 65 - 84</b>	<input type="radio"/>	<input type="radio"/>	<input type="radio"/>	<input type="radio"/>	<input type="radio"/>	<input type="radio"/>
<b>Over 85</b>	<input type="radio"/>	<input type="radio"/>	<input type="radio"/>	<input type="radio"/>	<input type="radio"/>	<input type="radio"/>

**CHANGES TO HEALTH SERVICES**

Over the last few years, Hardin County Public Health have been working to provide ongoing valuable services to the community. Please help us determine the improvements over the last three (3) years.

8. How would you rate the following public healthcare services? (Please select one box in each row)

*Mark only one oval per row.*

	Very Good	Good	Fair	Poor	Very Poor	Not Applicable
<b>Emergency preparedness</b>	<input type="radio"/>	<input type="radio"/>	<input type="radio"/>	<input type="radio"/>	<input type="radio"/>	<input type="radio"/>
<b>Health screenings</b>	<input type="radio"/>	<input type="radio"/>	<input type="radio"/>	<input type="radio"/>	<input type="radio"/>	<input type="radio"/>
<b>Access to services</b>	<input type="radio"/>	<input type="radio"/>	<input type="radio"/>	<input type="radio"/>	<input type="radio"/>	<input type="radio"/>
<b>Immunizations - Children's program</b>	<input type="radio"/>	<input type="radio"/>	<input type="radio"/>	<input type="radio"/>	<input type="radio"/>	<input type="radio"/>
<b>Immunizations - Flu vaccination clinics</b>	<input type="radio"/>	<input type="radio"/>	<input type="radio"/>	<input type="radio"/>	<input type="radio"/>	<input type="radio"/>
<b>Tobacco prevention / cessation programs</b>	<input type="radio"/>	<input type="radio"/>	<input type="radio"/>	<input type="radio"/>	<input type="radio"/>	<input type="radio"/>
<b>Tuberculosis (TB) control and testing</b>	<input type="radio"/>	<input type="radio"/>	<input type="radio"/>	<input type="radio"/>	<input type="radio"/>	<input type="radio"/>
<b>Disease Investigation</b>	<input type="radio"/>	<input type="radio"/>	<input type="radio"/>	<input type="radio"/>	<input type="radio"/>	<input type="radio"/>

9. Are there health services in your community or neighborhood that you feel need to be improved and or changed? (Please be specific)

---

---

---

---

---

10. Over the past 2 years, did you or someone from your household, receive health services outside of your county? \*

*Mark only one oval.*

- Yes    *Skip to question 11*  
 No    *Skip to question 13*

#### Additional County Services

11. Please list the services you or your household member(s) have received outside of your county to improve or maintain your health.

---

---

---

---

---

12. If offered, would you have received the services locally?

*Mark only one oval.*

- Yes  
 No  
 Maybe

13. Please rate the following areas for your community.

*Mark only one oval per row.*

	Not a problem anymore	Somewhat a problem	Still a problem
<b>Access to mental health services in the community</b>	<input type="radio"/>	<input type="radio"/>	<input type="radio"/>
<b>Suicide prevention and support</b>	<input type="radio"/>	<input type="radio"/>	<input type="radio"/>
<b>Fight obesity (nutrition education and fitness options)</b>	<input type="radio"/>	<input type="radio"/>	<input type="radio"/>
<b>Alcohol use</b>	<input type="radio"/>	<input type="radio"/>	<input type="radio"/>
<b>Opioid / narcotic use</b>	<input type="radio"/>	<input type="radio"/>	<input type="radio"/>
<b>Prevention of injuries and violence</b>	<input type="radio"/>	<input type="radio"/>	<input type="radio"/>
<b>Protect against environmental hazards</b>	<input type="radio"/>	<input type="radio"/>	<input type="radio"/>
<b>Prevent the spread of epidemics</b>	<input type="radio"/>	<input type="radio"/>	<input type="radio"/>
<b>Prepare and respond to public health emergencies</b>	<input type="radio"/>	<input type="radio"/>	<input type="radio"/>
Sexual health and STD			

Preventive health	<input type="radio"/>	<input type="radio"/>	<input type="radio"/>
and STD			
Prevention			
care			
Access to	<input type="radio"/>	<input type="radio"/>	<input type="radio"/>
care			

14. Which health needs are most pressing TODAY and are in need of improvement?

*Check all that apply.*

- Wellness options (example healthy lifestyle, food options, exercise, check-ups, screenings)
- Public awareness of healthcare services
- Mental Health / Counseling services
- Public transportation for healthcare
- After hours pharmacy services
- Nutritional education
- Home health / public health
- Hospice
- Dental services
- Obstetrics (family planning and prenatal care) services
- Healthy eating options
- Cancer services
- Chronic disease prevention (example diabetes or heart failure)
- Elder assistance programs
- Family assistance programs
- Care transitions (movement from one healthcare setting to another or home)
- Children's health and health screenings
- Emergency services
- Tobacco prevention
- Other: \_\_\_\_\_

**YOUR HEALTH**



15. In general, how would you best describe your health? (Please select only one)

*Mark only one oval per row.*

	Very Good	Good	Fair	Poor	Very Poor
<b>Description of your personal health</b>	<input type="radio"/>	<input type="radio"/>	<input type="radio"/>	<input type="radio"/>	<input type="radio"/>

16. Compared to a year ago, how would you rate your overall health now?

*Mark only one oval per row.*

	Much better than a year ago	About the same	Much worse than a year ago
<b>Change in health</b>	<input type="radio"/>	<input type="radio"/>	<input type="radio"/>

17. Do you follow these health practices? (Please select one box for each row)

*Mark only one oval per row.*

	Yes	No	Not Applicable (NA)
<b>Do you get 2.5 hours of moderately intense physical activity each week</b>	<input type="radio"/>	<input type="radio"/>	<input type="radio"/>
<b>If female, do you have a pap smear every other year</b>	<input type="radio"/>	<input type="radio"/>	<input type="radio"/>
<b>If female and over 40, do you have annual mammograms</b>	<input type="radio"/>	<input type="radio"/>	<input type="radio"/>
<b>If male and over 50, do you have an annual prostate exam</b>	<input type="radio"/>	<input type="radio"/>	<input type="radio"/>
<b>If over 50, have you had a colonoscopy</b>	<input type="radio"/>	<input type="radio"/>	<input type="radio"/>

18. Please complete sentence below - "Are you..."

*Mark only one oval per row.*

	Yes	No	Not Applicable (NA)
<b>Eating right (Daily, balanced plate of protein, fruits, vegetables, grains)</b>	<input type="radio"/>	<input type="radio"/>	<input type="radio"/>
<b>Using tobacco products weekly</b>	<input type="radio"/>	<input type="radio"/>	<input type="radio"/>
<b>Exercising 2-3 times weekly</b>	<input type="radio"/>	<input type="radio"/>	<input type="radio"/>
<b>Consuming alcohol (more than 1 drink daily)</b>	<input type="radio"/>	<input type="radio"/>	<input type="radio"/>
<b>Receiving an annual flu shot</b>	<input type="radio"/>	<input type="radio"/>	<input type="radio"/>
<b>Been without a place to stay for multiple nights (homeless)</b>	<input type="radio"/>	<input type="radio"/>	<input type="radio"/>
<b>Having difficulty with employment due to transportation, education, skills, childcare, scheduling, etc</b>	<input type="radio"/>	<input type="radio"/>	<input type="radio"/>

19. Please mark if you have ever felt...

*Mark only one oval per row.*

	Yes	No
<hr/> <b>In the last 12 months, did you ever eat less than you felt you should because there wasn't enough money for food?</b>	<input type="radio"/>	<input type="radio"/>
<hr/> <b>In the last 12 months, has your utility company shut off your service for not paying your bills?</b>	<input type="radio"/>	<input type="radio"/>
<hr/> <b>Are you worried that in the next 2 months, you may not have housing?</b>	<input type="radio"/>	<input type="radio"/>
<hr/> <b>Do problems getting child care make it difficult for you to work or study? (leave blank if you do not have children)</b>	<input type="radio"/>	<input type="radio"/>
<hr/> <b>In the last 12 months, have you needed to see a doctor, but could not because of cost?</b>	<input type="radio"/>	<input type="radio"/>

because of \_\_\_\_\_  
in the last 12  
months, have  
you ever had to  
go to the hospital  
because you  
didn't have a  
way to get  
there? have a  
need help  
paying ever  
hospital  
bills?  
Are you afraid  
you might be  
evicted or  
lose your  
apartment  
building or  
house?  
Do you work  
(or lost a job)  
that requires  
transportation?  
In the past 12  
months, have  
you taken less  
medication than  
your doctor  
prescribed  
because you  
didn't have  
money to buy  
medication?

<input type="radio"/>	<input type="radio"/>
<input type="radio"/>	<input type="radio"/>
<input type="radio"/>	<input type="radio"/>
<input type="radio"/>	<input type="radio"/>

20. What type of healthcare facility do you use when not feeling well or sick?

*Mark only one oval.*

- Clinic/Doctor's office
- Emergency Department
- Urgent-care/Acute Care
- Public Health Department
- Don't seek care/medical treatment
- Other: \_\_\_\_\_

### ABOUT YOU

Please provide a bit more information about who you are so we can better serve the community.

21. What is your age?

*Mark only one oval.*

- 17 and under
- 18 to 25
- 26 to 44
- 44 to 64
- 65 to 84
- 85 and over

22. Your gender

*Mark only one oval.*

- Female
- Male
- Prefer not to say

For a copy of the full survey please contact Hardin County Public Health

23. How would you identify yourself?

*Mark only one oval.*

- Caucasian / White
- African American / Black
- Latino / Hispanic
- Indian / Native Alaskan
- Asian / Pacific Islander
- Multicultural / Multiracial
- Other: \_\_\_\_\_

24. How would you describe your household? (Please select all that apply)

*Check all that apply.*

- Single
- Married
- Parent / Guardian with children at home
- Multiple adults with children no longer at home
- Divorced
- Widowed
- Other: \_\_\_\_\_

25. Regarding your health insurance coverage, what type of health coverage is your primary plan? (Choose one)

*Mark only one oval.*

- Private Insurance you purchased
- Covered by employer (employer pays total cost)
- Partially covered by employer (you and employer share cost)
- Medicare
- Medicaid
- No coverage (uninsured)

26. Where do you get most of your medical information?

*Mark only one oval.*

- Doctor
- Internet
- Friend(s)
- Family
- Social media
- Television
- Radio
- Insurance company



27. For reporting purposes, are you involved in or are you a... (Please check all that apply)

*Check all that apply.*

- Board member (local health organization)
- Business / Merchant owner or employee
- Civic club member
- Clergy / Congregational Leader
- College / University student
- Construction / Housing / Builder
- Consumer of healthcare services
- Education official / Teacher
- Economic Development/Government
- Farmer / Rancher
- Health Department
- Healthcare Provider
- Hospital or Clinic employee
- Insurance industry
- Laborer / Manufacturing
- Law Enforcement
- Parent / Caregiver
- Student (high school)
- Veteran
- Other: \_\_\_\_\_

28. What is your home 5 digit zip code? \*

\_\_\_\_\_

**THANK YOU**

(For paper only) If filling this with a paper form, please return the complete survey with enclosed business reply envelope or to the Hardin County Public Health Department.

29. Please provide today's date.

\_\_\_\_\_



## Town Hall Meeting Outcomes (Primary Research)

### Top Priorities

Mental Health: Assess and support depth and breadth of services for Mental Health needs in the communities.
Substance Abuse: Reduce the concern for and presence of substance abuse related health/safety issues.
Childcare Services/ Access: Address childcare services within the communities.
Knowledge for Preventative Services: Communicate, convene, and spread information (knowledge) for prevention services.
Teen Health / Teen Health Services: Improvement and availability/ access of services for teen health needs.
Health Coalition for County: Coalition group to address the services and access for community health needs.

**Implementation of Priorities in Action Plan – listed prior in report.**

## CONTACT INFORMATION AND QUESTIONS

### Hospital Contact

Administrator: Megan Harrell  
Address: 1707 – 21<sup>st</sup> Street,  
Eldora, Iowa 50627  
Email: mharrell@greenbelthomecare.com

### Consultant Contact

Principle Investigator: Sarah Pavelka,  
Pavelka’s Point Consulting, LLC  
Address: Cedar Falls, Iowa 50613  
Email: [pavelkaspoinconsulting@gmail.com](mailto:pavelkaspoinconsulting@gmail.com)

-----End of Report-----