

Community Health Assessment



2023

Madison County Health System and Madison County Public Health (Iowa)

Community Health Assessment

MADISON COUNTY HEALTHCARE SYSTEM AND MADISON COUNTY PUBLIC HEALTH (IOWA)

CONTENTS

Contents	2
Executive Summary	4
2023 Community Health Assessment	4
Community Health Assessment Strengths	5
Town Hall - Community Health Opportunities Identified	5
Community Health Assessment Survey - General Feedback	5
Community Health Assessment Survey - Results of Opportunities	6
Needs of Improvement – results	6
Programming needs for the community – results	7
Iowa Health Rankings: Health System and Public Health	7
Methodology	9
Scope and Purpose	9
Assessing Community Health	9
Process to Complete a CHNA/CHA	9
Steps to Complete the CHA	10
Steps in Process for CHA including Timelines / Milestones	10
Model for Health Assessment Process and Steps	11
Community Served / Profile Description	11
Madison County, Iowa for Health Assessment - Specifics	11
Detailed Demographics – Madison County, Iowa	12
Collaborating CHA Parties	13
Madison County Health System Profile	13
Madison County Public Health Department Profile	13
Pavelka’s Point Consulting, LLC – External Consulting Services	14
Community Health Assessment Process	15
Agreement/Contracting/Community Leadership (CHA Steps 1 – 3)	15

MADISON COUNTY COMMUNITY HEALTH ASSESSMENT 2023

Create the assessment, survey, and evaluation process (CHA Steps 4)	15
Collect the Data (CHA Steps 5)	15
Analyze the Data (CHA Steps 5 continued)	18
Document and Define Priorities (CHA Steps 6)	19
Town Hall Research Process (Engage & Prioritize with Stakeholders)	19
Town Hall Outcomes	26
Community Strategy Formulation and Action Planning	27
Planning for Improvement Strategies (CHA Steps 7 & 8)	27
Community Health Improvement Plan (CHIP) 2023	27
Prior Assessment Action Plans	30
Evaluation of Progress on Key Priorities and Strategic Alignment (CHA Step 9)	30
Community (SERVICE AREA) Health Status	31
Primary Research Findings	31
Personal Health: Survey Results	38
Primary Data (Survey) Demographics of Participants 2023	40
Secondary Research Findings 2023	43
Inventory of Community (Service Area) Health Partners	51
Community (Service Area) Resources – Inventory of Services	53
Inventory of Health Services – Madison County, Iowa	53
Providers Delivering Care – Madison County, Iowa	55
Service Directory	57
Data Details	57
Plan Tactics for Madison County, Iowa – 2017 to 2023	57
CHA Survey Detailed Survey, Findings (Primary Research)	57
Town Hall Meeting Outcomes (Primary Research)	62
Top Priorities (votes for top actions)	62
Implementation of Priorities in Action Plan – CHIP	62
Contact Information and Questions	62
Hospital Contact	62
Public Health Contact	62
Consultant Contact	62

EXECUTIVE SUMMARY

2023 Community Health Assessment

Community Health Assessments (CHA) are ongoing processes that systematically evaluate the health needs of the community to improve the health of the population. According to the Iowa Department of Health and Human Services (2023), with a more than 30-year history in Iowa, the Public Health Departments are vital to represent and promote local action for the protection and health of their communities. At least every five years, county and local departments are responsible for collecting, analyzing, prioritizing, and acting on behalf of their communities and documenting gap in the health conditions in which they serve (<https://hhs.iowa.gov/cha-chip>). The Community Health Improvement Plan (CHIP) is a strategic document that notes actions to improve such health conditions.

Federal requirements for nonprofit hospitals require some hospitals to conduct a Community Health Assessment every three years. After the passage of the Patient and Protection and Affordable Care Act of 2012, 501 (c)(3) health organizations were given four new tax requirements to begin in tax years after March 23rd, 2012 (Stall, 2012). It is best practice to have the local public health and other health organizations join forces in the collaborative effort and partnership. Both groups in the system will gain from the efforts and relationship. These groups share a common goal of a healthier community.

The benefits of a Community Health Assessment, for both health department and the community, were stated in the following methods:

1. Identify key community (service area) health concerns, perceptions, and resources, while creating opportunities for collaboration in delivery of services.
2. Find a common understanding of and analyze community (service area) health needs, then prioritize with implementation strategies.
3. Provides guidance to all health-related organizations for how they can align their services and community benefit programs to best meet needs.
4. Focus organization's efforts for improvement and structure for addressing social determinates of health in building a relationship between and among stakeholders. All stakeholders can then contribute to improving the health of the community.
5. Provides rationale for current and potential funders to support efforts to improve the health of the community.

Iowa Department of Health and Human Services. (2023). Community Health Assessments and Improvement Planning. <https://hhs.iowa.gov/cha-chip>

Stall, E. (2012). Community Health Assessment: 5 Phases to Compliance. Retrieved from <https://www.beckershospitalreview.com/legal-regulatory-issues/community-health-needs-assessment-5-phases-to-compliance.html>

MADISON COUNTY COMMUNITY HEALTH ASSESSMENT 2023

Community Health Assessment Strengths

Madison County Health System and Madison County Public Health Department Primary Service Area/Community Health Strengths
1. Care Coordination and expanding rural care
2. Access to visiting specialist
3. Reduction of chronic diseases (diabetes prevalence)
4. Reduction of smoking and smoking cessation programs
5. Access to exercise opportunities
6. Reduction of sexually transmitted diseases
7. Preventable hospital stays reduced
8. Flu Vaccination rates improving over state average
9. Homeownership higher than state rate

Town Hall - Community Health Opportunities Identified

Town Hall Outcomes - Community Health Opportunities
1. Mental Health Services: Assess and support depth and breadth of services for Mental Health needs in the communities.
2. Substance Abuse: Assess and support depth and breadth of services for substance use and abuse in the communities.
3. Workforce Shortages: Attract and retain employees and workers in/into the county for all sectors.
4. Preventative and Supportive Services: Communicate, convene, and spread information knowledge for prevention and support services.
5. Transportation Services: Services for the elderly and residents in need in the community.
6. Health and Economic Stability Coalition: Coalition group to address the services and access for community health and economic stability needs.

Community Health Assessment Survey - General Feedback

The following were general feedback sections from the Community Health Assessment Survey in which 176 community (service area) participants completed the survey either via paper or electronic formats. The details of the survey process can be found later in this report.

- The percent of Madison County, Iowa survey participants who would rate the overall quality of care as either Very Good or Good is 80.6%
- Madison, Iowa survey participants are satisfied with the following hospital services: Emergency Room, Family Practice/Medical Services, Hospital (Acute) Services, Outpatient Services, Rehabilitation Services, and Specialist Services.
- Madison County, Iowa survey participants are NOT satisfied or neutral with the following services: Mental Health, Tobacco Prevention, Home Maker Services, Blood Pressure Screenings, Disease Investigation, and Foot Care.

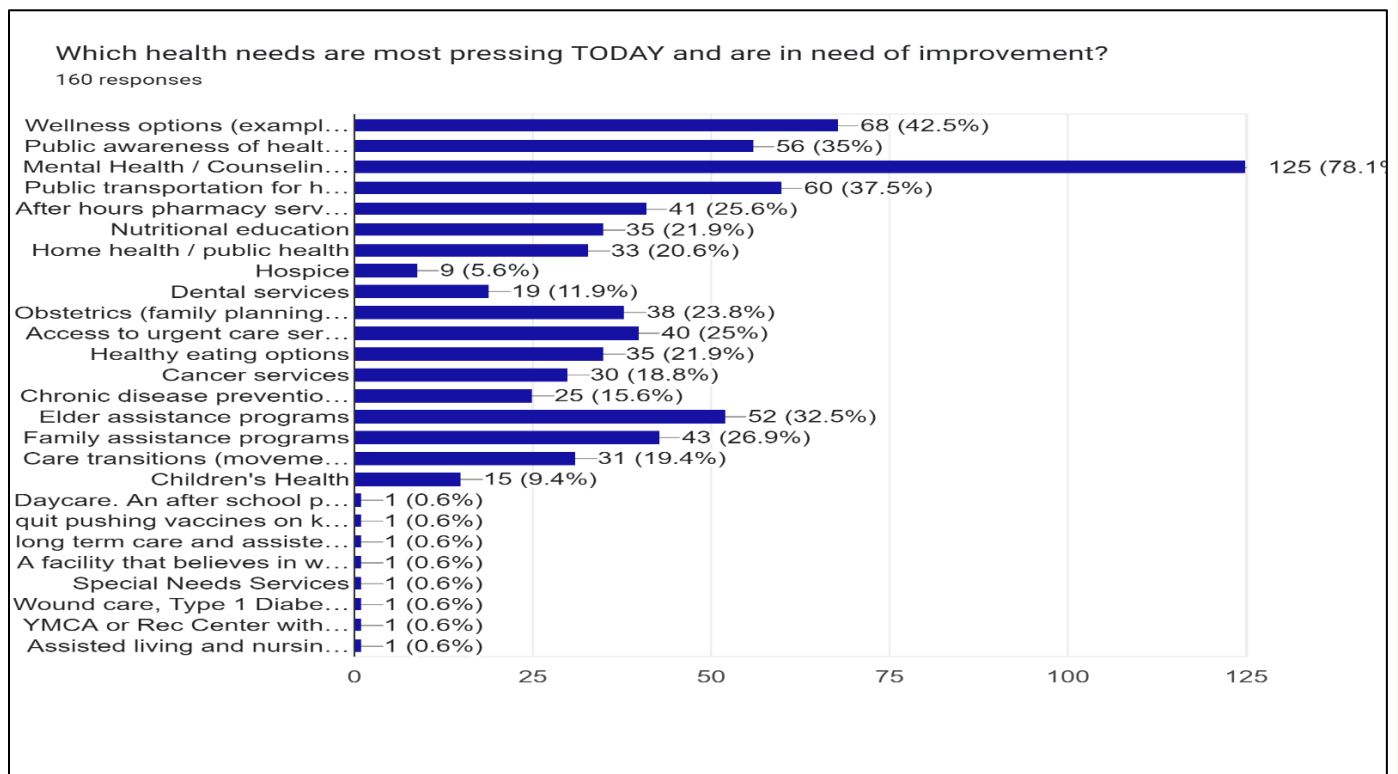
MADISON COUNTY COMMUNITY HEALTH ASSESSMENT 2023

- The percentage of participants who have received healthcare services outside of the community over the past two years was 84.1%. Of those that provided the type of service here are the services in which they traveled out of the community: Obstetrics, Mental Health Services, Surgery, Specialty (Cardiac, Urology, Orthopedics, Dermatology, Oncology, Neurology), and treatment for Chronic Diseases/Specialty Care.
- Madison County, Iowa participants believed there are opportunities for both health concerns and programs to combat the health concerns. The top perceptions of needs are listed in the following two tables as Results of Opportunities.

Community Health Assessment Survey - Results of Opportunities

CHA Survey – Needs for Health Concerns	
1. Mental Health / Mental Illness (78.2%)	2. Wellness options (42.5%)
3. Public transportation for medical services (37.5%)	4. Public awareness of health improvement options (35%)
5. Elder assistance programs (32.5%)	6. Family Assistance programs (26.9%)
7. After hours pharmacy (25.6%)	8. Access to urgent care services (25%)
9. Obstetrics (family planning) (23.8%)	10. Healthy eating and Nutrition education (21.9%)

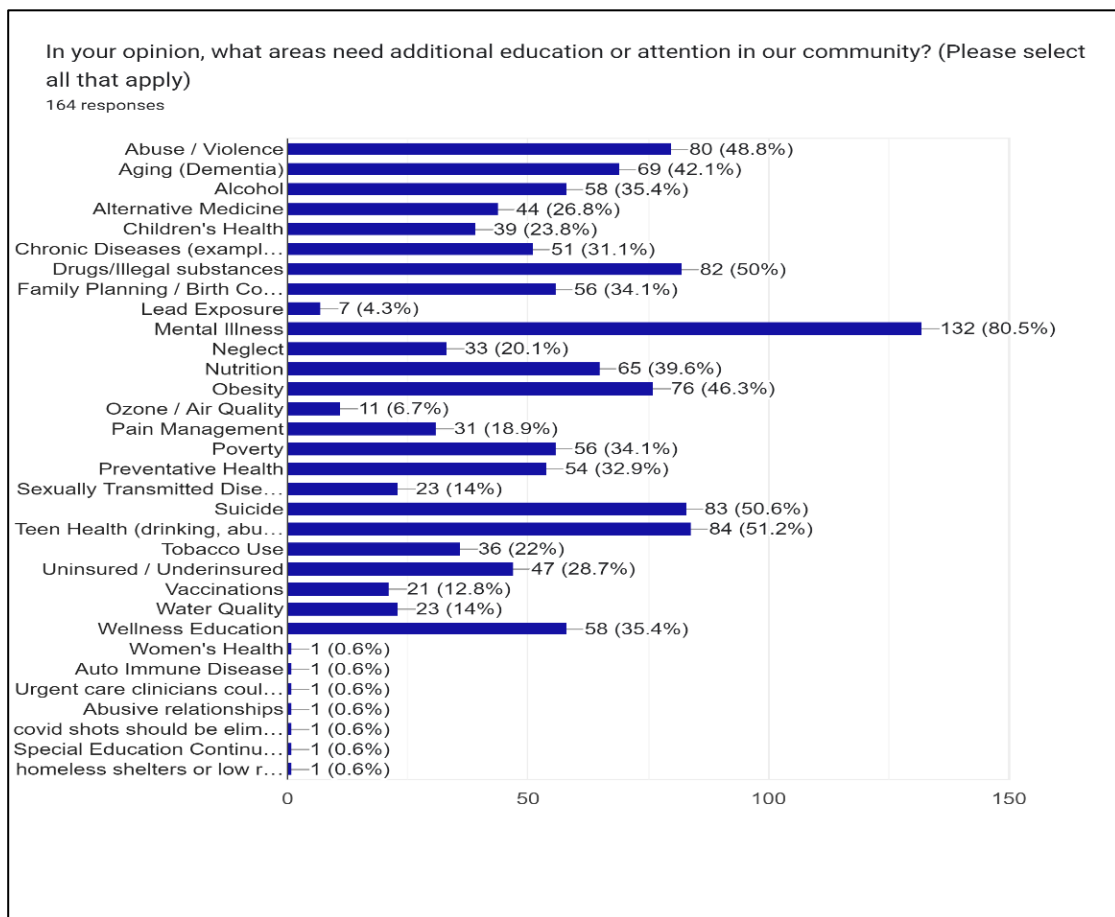
Needs of Improvement – results



MADISON COUNTY COMMUNITY HEALTH ASSESSMENT 2023

CHA Survey – Program Needs for Health Concerns (above)	
1. Mental illness (80.5%)	2. Drugs/illegal substances (50%)
3. Abuse / Violence (48.8%)	4. Obesity (46.3%)
5. Aging (Dementia) (42.1%)	6. Nutrition (39.6%)
7. Alcohol (35.4%)	8. Family Planning / Birth Control (34.1%)
9. Poverty (34.1%)	10. Chronic disease (31.1%)

Programming needs for the community – results



Iowa Health Rankings: Health System and Public Health

According to the 2023 Robert Wood Johnson County Health Rankings study, Madison County, Iowa has the following comparisons. More details can be found in later sections of this report.

- Demographics and Age:** Madison County, Iowa has a population of 16,548 residents as of 2023, an increase of 3.0% since 2020. The county population consists of 17.7% at or over the

MADISON COUNTY COMMUNITY HEALTH ASSESSMENT 2023

ages of 65 years, and the state average is 17.1%. In the under 18 age group the rate is at 24.7%. The county is considered 52.7% rural (state 36.0% rural).

- **Diversity:** Marion County, Iowa has less than 2% of the population that is considered non-proficient in English as a first language. The county has approximately 1.91% Hispanic population, and less than 1% African American, American Indian, and Asian combined. Females make up approximately 49.6% of the population.
- **Income:** Madison County, Iowa median household income is \$79,513 (Iowa average of \$65,600) and unemployment is at 4.6% (Iowa 24.2%). Regarding the effects of income on the children in the county, 8% of the children live in poverty (Iowa 12%) and 29% are eligible for free or reduced-price lunches (Iowa 41%).
- **Housing and Commutes:** The county is rated with 9% severe housing issues (Iowa overall at 12%). For employment, 46% of the population have long commutes to work and 75% drive alone (Iowa is at 21% and 79% respectively).
- **Education:** The percentage of high school graduation is at 96% and a strength in county rankings (Iowa 92%). For college education, Madison County, Iowa has 74% of the population with some college (Iowa 70%).
- **Prenatal Care:** According to Iowa Health Fact Book, as of March 2023, 318 mothers started Prenatal care in the first trimester, for a ranking of 36 out of the 99 counties in Iowa. The number of mothers that smoked during pregnancy was 25, for an Iowa rank of 67.
- **Primary Care and Hospital Services:** The ratio of population to primary care providers was 1,840 residents to 1 provider (Iowa ratio of 1,360:1). Preventable Hospital stays were below the Iowa number at 1,823 stays (Iowa 2,400).
- **Insured:** The uninsured adult population rate in Madison County, Iowa is 6%, slightly lower than the Iowa rate of 7%. The uninsured rate for children is 4%, slightly higher than the Iowa rate of 3%.
- **Access:** Access to exercise opportunities is 46% (below the Iowa rate of 79%) and food insecurity is at 9.2% (Iowa rate is 8.6%). Mammography screenings are at 45% (Iowa rate is 47%). Score of 69.7% of children at 2 years of age are up to date on complete series of vaccinations, compared to the 70.9% at the state (source: Iowa Department of Public Health).
- **Health Conditions:**
 - The “Frequent Mental Distress” rate for Madison County, Iowa is 14%, with an Iowa rate of 14%. According to the CDC, 7.6% of Americans over the age of 12, had depression and living at or below the poverty level people were 2.5 times more likely to have depression (source: <https://www.cdc.gov/nchs/data/databriefs/db172.htm>).
 - Diabetes prevalence is at a rate of 8% (less than Iowa’s rate of 9%).
 - All Cardiovascular Disease rate were 41.2 hospitalizations per 1000 Medicare Beneficiaries (Iowa best county is 23.3/1000 Beneficiaries in the 2020 data). (source: <https://nccd.cdc.gov/DHDSPAtlas/reports.aspx?geographyType=county&state=IA&countyTab#report>)
 - Adult Obesity rates are at the Iowa rate of 34%, and 3% below the Iowa rate (37%).
 - Adult smoking is 16%, one percent below the Iowa rate (17%).

MADISON COUNTY COMMUNITY HEALTH ASSESSMENT 2023

- Physical inactivity rate is 21%, however 2% lower than Iowa's rate (23%). The Access to exercise opportunities is very low at 46%, with the Iowa rate of 79%.
- The percentage of alcohol impaired driving deaths in Madison County, Iowa is 27%, at the Iowa percentage of 27%. Excessive drinking percentages were also above the Iowa rate, at 26% and 25% respectively.

METHODOLOGY

Scope and Purpose

The Iowa Department of Health and Human Services requires that local health departments assess and plan for the needs of the community every five years. The assessment should include key stakeholders in the community including residents and other health providers. The assessment should evaluate the needs of the communities in which it serves, paying attention to the special needs of populations that may be currently underserved. The Public Health Department should provide both primary and secondary data to the key stakeholders, assess the community, prioritize, and create a five-year plan for improvement. These key steps are outlined below, and more information found at

<https://hhs.iowa.gov/cha-chip/guide-new> .

The Federal Patient Protection and Affordable Care Act requires that each registered 501(c)3 hospital to conduct a Community Health Assessment (CHA) at least one every three years, share the assessment results with the community, and adopt a strategy to meet the health needs of the community (service area). The IRS Notice 2011-52 can be found at the following link and were followed for the purposes of this process, assessment, and report. <https://www.irs.gov/charities-non-profits/community-health-needs-assessment-for-charitable-hospital-organizations-section-501r3>

Assessing Community Health

To assess the needs of the community (service area) the hospital must identify the significant health needs, prioritize those health needs, and identify resources potentially available to address them. Health needs of a community include improvement or maintenance of health status across the community, parts, neighborhoods, or population with health disparities. These needs can include financial, access, illness prevention, nutrition or social, behavioral, environmental factors that influence health. Resources can include organization, facilities, and programs within the community.

Process to Complete a CHNA/CHA

The recommended requirements for the Community Health Needs Assessment/ Community Health Assessment (CHNA/CHA) include the method of discovery, qualify community needs, quantify needs, and complete data analysis and comprehensive needs assessment. Federal regulations state that the following process must be completed in order to complete a Community Health Needs Assessment (CHNA)/ Community Health Assessment (CHA).

MADISON COUNTY COMMUNITY HEALTH ASSESSMENT 2023

1. Adopt a planning structure and identify resources. The planning structure should include a plan development process and staff/technical support plans.
2. Inform the community about the process and its importance; identify and engage stakeholders. From the beginning, stakeholders need to be consulted and actively involved.
3. Identify and secure resources. Resources may include financial and non-financial support from groups whose purposes align with creating a healthier community.
4. Identify data that describes community health status and needs.
5. Gather and analyze the data and develop a Community Health Assessment (CHA) summary report. Share the report with stakeholders.
6. With stakeholder assistance, review the key factors that are important for health and well-being as part of setting health priorities and objectives.
7. Document key points of the stakeholder discussion. Invite broader community participation and input. Include the feedback in the priority decision-making.
8. Develop the action plan/health improvement plan (HIP) that includes goals, objectives, and strategies.
9. Implement, track progress, and sustain the process. Celebrate the milestones.
10. Establish and implement a plan to communicate health needs and goals to the community.
11. Annually evaluate the goals, objectives, strategies, and indicators. Revise and update the needs assessment and health improvement plan.
12. Approve plans and make report and improvement plan available to the public.

Steps to Complete the CHA

The following is the process steps with milestones was completed during the community health needs assessment development. This process and milestones follow closely with the recommendations from the American Hospital Association and are a detailed list of actions taken in the above process per the IRS requirements (Source:

http://www.healthycommunities.org/Education/toolkit/index.shtml#.XC_37lxKg2x).

Steps in Process for CHA including Timelines / Milestones

1. **Agreement and contracting** – discuss critical success factors for CHA process (December 8, 2022)
2. **Meeting with community leadership** – planning, methodology, and agreement of scope and services (Completed 1/23/2023)
3. **Identify and engagement of key stakeholders** – define the community and methodology (2/12/2023)
4. **Create and process evaluation (survey/ assessment) methods** – work with organization to develop survey that reflects the community, needs, and priorities (2/13/2023 – 3/30/2023)
5. **Collect and analyze the data** – including community health issues of past and future (4/3/2023 – 10/1/2023)
6. **Document and communicate priorities** – work with organization to define the priorities and engagement of key stakeholders including a Town Hall meeting(s) (9/19/2023)

MADISON COUNTY COMMUNITY HEALTH ASSESSMENT 2023

7. **Plan improvement strategies** – work with organization for final report and distribution as needed (9/19/2023 to 11/15/2023)
8. **Organization to implement improvement plans** – work with key stakeholders in community for best practice implementation and success (11/15/2023 and ongoing)
9. **Evaluate progress on the key priorities and strategic alignment** – reevaluate progress and continual planning for future needs (FY2023 to FY2028)

Model for Health Assessment Process and Steps

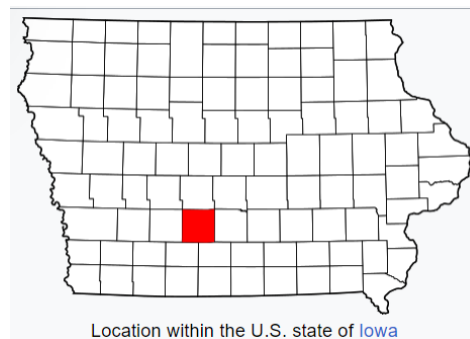
Closely aligned to above stages of the process



Reference: Association for **Community** Health Improvement – American Hospital Association

Community Served / Profile Description

Madison County, Iowa Community Map



Madison County, Iowa for Health Assessment - Specifics

MADISON COUNTY COMMUNITY HEALTH ASSESSMENT 2023

It was determined by the leadership of Madison County Health System and the Madison County Public Health Department, that the Madison County Community Health Assessment will include those individuals that live or receive health services in Madison County, Iowa. These communities include Winterset, Earlham, St. Charles, Cumming, Truro, Lorimer. This would be the overall (total) population for this process is 16,548 (2020 Census data). A statistically significant sample size (n=176) was achieved during the survey phase of the process and did represent both demographic, social/economic, religious, and age differences. Efforts were made to ensure that there was a broad interest represented in each of the data collection and prioritization phases.

The population of Madison County, Iowa is 16,548 residents as of 2020, an increase of 3.0% since 2017. The county is considered 52% rural, covering approximately 561 square miles. The population density is approximately 29 people per square mile (Iowa is 54.5 residents per square mile). (Source: https://www.city-data.com/county/Madison_County-IA.html)

The county population consists of 17.7% at or over the ages of 65 years, and the state average is 18.3%. In the under 18 age group, Madison County, Iowa has a population of 24.7%, and state average is 22.6%.

The communities within Madison County, Iowa are Winterset, Earlham, St. Charles, Cumming, Truro, Lorimer. Major highways include Interstate 80, U.S. Highways 6 and 169, and Iowa Highway 92. (source: https://en.wikipedia.org/wiki/Madison_County,_Iowa).

Major types of employment in Madison County, Iowa are construction (15.1%), education, health and social services (14.5%), manufacturing (27.7%), retail (12.8%), and finance, insurance, real estate, and rental / leasing (12.7%). (source: https://www.city-data.com/county/Madison_County-IA.html).

Detailed Demographics – Madison County, Iowa

Zip	Name	County	Pop (2021)	House holds	Income	Med Age	Females	Males	White	Black	Hisp	Other
50273	Winterset	Madison	5,385	2,342	\$62,545	36.0	53.2%	46.8%	98.1%	0.2%	2.0%	0.4% Asian
50072	Earlham	Madison	1,417	546	\$99,779	41.6	49.6%	50.4%	98.1%	0.5%	0.8%	0.5% Asian
50240	St. Charles	Madison	647	325	\$76,199	38.9	55.7%	44.3%	97.1%	1.7%	1.5%	1.2%
50061	Cumming	Madison	460	237	\$135,353	42.5	47.0%	53.0%	NR	NR	NR	NR
50257	Truro	Madison	517	202	\$60,157	32.1	52.9%	47.1%	NR	NR	NR	NR
50149	Lorimer	Madison	378	219	\$37,598	36.1	48.5%	51.5%	NR	NR	NR	NR
~	~	Madison	16,548	6,913					92.4%	0.3%	0.15%	.051% Asian

MADISON COUNTY COMMUNITY HEALTH ASSESSMENT 2023

Collaborating CHA Parties

Collaborating with several different agencies in, around, and those that serve Madison County, Iowa, the CHA was completed. The following is a summary of key stakeholders in the CHA process. A detailed list of individuals or organizations who have played at least one key role in the assessment are listed in the Community Health Partners and Resources section of this report.

Madison County Health System Profile

Address: 300 West Hutchings Street, Wunderset, Iowa 50273

CEO: Marcia Hendricks, CEO

Mission: Delivering compassionate health care with excellence.

Vision: Partnering with others to foster opportunities to preserve and improve community health.

About: Madison County Health Care System is committed to delivering equitable and inclusive healthcare services, ensuring an optimal patient experience, and achieving better health outcomes for all. MCHCS consists of Madison County Memorial Hospital, The Earlham Medical Clinic, and the Health Trust Physicians Clinic in Wunderset. Throughout the healthcare system, four physicians and nine advanced practice providers meet the healthcare needs of all area residents.

Network Affiliation: We are a MercyOne Affiliate, which allows us to partner with MercyOne Central Iowa through a management and CAH agreement. The Madison County Memorial Hospital Board of Trustees maintains complete control of Madison County Health Care System operations, while taking advantage of the cost savings, management expertise and educational offerings available to a larger, tertiary facility such as MercyOne.

Services: Madison County Health System offers a variety of inpatient (acute/skilled) and outpatient services to the county and surrounding areas. A comprehensive list of services can be found at <https://www.madisonhealth.com/about-us/> . The following is a list of services provided, but not limited to at Madison County Health System:

Rural Health Clinics	Specialty Care	Visiting Specialists
<ul style="list-style-type: none">• Family practice medicine• Women’s health• Emergency medicine• Pediatrics	<ul style="list-style-type: none">• Orthopaedic care• General surgery• Foot & ankle care• Rehabilitation therapy• Chronic disease management	<ul style="list-style-type: none">• Cardiology• Dermatology• Ears, nose, and throat• Oncology• Pain management• Podiatry• Rheumatology• Urology

Madison County Public Health Department Profile

Address: 209 E. Madison Street, Wunderset, Iowa 50273

MADISON COUNTY COMMUNITY HEALTH ASSESSMENT 2023

Administrator: Shawn Smith, MPH, Public Health Admin

Mission: The Mission of Madison County Public Health is to promote, protect and preserve the health and well-being of Madison County residents through leadership and community collaboration.

About: More information about Madison County Public Health Department at <https://madisoncounty.iowa.gov/offices/public-health/>

Services: Madison County Public Health is a partnering organization with Madison County Health System. Services cover the entire county and are listed below, but not limited to the following:

Madison County Public Health Services	<ul style="list-style-type: none">• Homemaker services• Immunization services• Disease investigation• COVID-19 immunizations	<ul style="list-style-type: none">• Blood pressure clinics• Foot care• Health education• Flu clinics
---------------------------------------	---	---

Pavelka's Point Consulting, LLC – External Consulting Services

Address: 5832 West Mt Vernon Road, Cedar Falls, Iowa 50613

CEO: Sarah Pavelka, PhD, MHA, OTR/L, CPHQ, FNAHQ

Bibliography: Sarah Pavelka, PhD, MHA, OTR/L, CPHQ, FNAHQ has over 20 years of experience leading and coaching in organizational performance and continuous improvement in business, industry, education, and healthcare. Sarah, is the CEO/owner of Pavelka's Point Consulting, LLC; and Program Director for Walden University, Master of Healthcare Administration Program.

Dr. Pavelka has professional and academic experiences are as a 13-year faculty member for the Masters in Healthcare Administration program at Des Moines University, Improvement Advisor at the Iowa Healthcare Collaborative, and Adjunct Faculty for Upper Iowa University. Her previous professional experiences include the Quality Management Director at the Iowa Foundation for Medical Care, Director of Business and Industry Relations for Pella Regional Health Center, and clinical experience as the Director of the Occupational Therapy department for Pella Regional Health Center in Pella, Iowa.

Dr. Pavelka's extensive volunteer experiences included being a six-time National Baldrige examiner, as well as, a seven-year state examiner for the Iowa Recognition for Performance Excellence. She was also the Director-at-Large for the National Association for Healthcare Quality Board from 2014 to 2016. Sarah was also the Past-president of the Iowa Association for Healthcare Quality Board; a task force member for the Iowa Hospital Association; and a member of the Des Moines University Alumni Board.

Sarah holds degrees in Biology and Psychology from Luther College; an Occupational Therapy degree from Concordia University-Wisconsin; MHA from Des Moines University, and a Ph.D. from Walden University. She is a Fellow for the National Association for Healthcare Quality (FNAHQ); a Certified

MADISON COUNTY COMMUNITY HEALTH ASSESSMENT 2023

Professional in Healthcare Quality (CPHQ); and has credentials in Occupational Therapy, Ergonomics, Lean, and Six Sigma Black Belt.

Community Health Assessment Process

The following sections represent the process of the Community Health Assessment completed with Madison County Health System and Madison County Community Leadership and Key Stakeholders. These process steps include creating purpose, defining scope and community, engagement of key leadership, survey assessment, analysis, prioritization, reporting of outcomes, and action planning.

The IRS requirements for a CHNA are a four-phase the process was represented earlier in the document (see Methodology – Scope and Purpose), and further explored in the following sections.

Agreement/Contracting/Community Leadership (CHA Steps 1 – 3)

On, January 23, 2023, leadership from Madison County Health System, Madison County Public Health, and Pavelka's Point Consulting, LLC met and discussed contracting arrangements, critical success factors, CHA process, timelines, and who would be key stake holders. Shortly following this initial contracting meeting, these parties met on February 12, 2023, for planning for the IRS/Iowa Department of Public Health (Iowa Health and Human Services - IHHS) compliant CHA, further methodology, distribution, survey needs, agreement, and scope of services. Key leadership and stakeholders were also discussed, and a list of involvement was compiled in meeting minutes. It was elected at these meetings to move forward with the CHA process and initial survey distribution would happen at the following April 2023 and survey conclusion on or about October 2023.

Create the assessment, survey, and evaluation process (CHA Steps 4)

Starting in February 2023, a community health needs assessment survey was designed and created. The leadership from Madison County Health System and Public Health were allowed to review the survey as it was developed. New questions also address the actions or priorities from 2017 to 2023 completed in the communities for Madison County Health System and Public Health, along with the partnering community entities. Questions related to Social Determinates of Health were also added as recommended by best practice. More information can be provided on Social Determinates of Health at Healthy People 2030 <https://health.gov/healthypeople> or Health Leads (source of survey questions) at <https://healthleadsusa.org/>.

Collect the Data (CHA Steps 5)

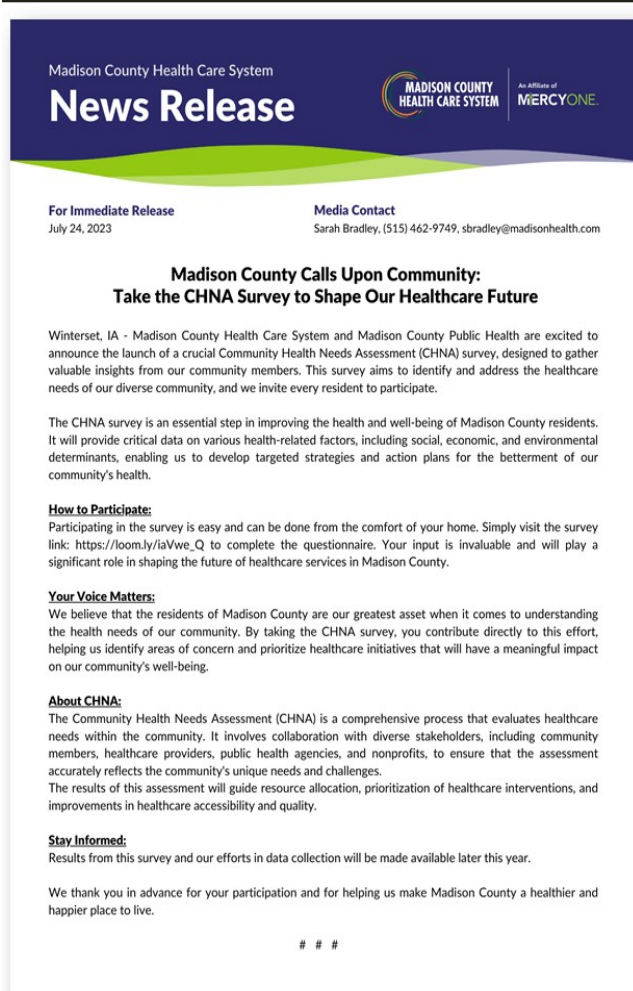
Collection of survey data comprised of many forms and methods. Survey links, fliers, and paper copies were sent to local businesses and employers. Surveys were left at the Madison County Health System and Public Health Departments for residents of the communities and either electronic or paper (hard) copies were allowed to be submitted. Leadership for the process also attended several community events, school events, and religious gatherings to encourage participation in the survey process. Electronic links were sent multiple times in the local newspapers, provided through the Hospital and Public Health website and social media, and patients were encouraged to complete the survey before

MADISON COUNTY COMMUNITY HEALTH ASSESSMENT 2023

or after healthcare services. During the process, the leadership provided translation services (i.e. vision or language), electronic and paper copies, and a brief description of purpose to those who were taking the survey. No material or monetary incentives were provided when taking the survey.

COMMUNITY PRESS RELEASE/SOCIAL MEDIA/BUSINESS FLIERS

The following was a press release that was sent to the local newspaper entities and distributed for general awareness of the survey being conducted. Social media spotlights and business fliers were also distributed at events and local organizations.



Madison County Health Care System
News Release
MADISON COUNTY HEALTH CARE SYSTEM | An Affiliates of MERCYONE

For Immediate Release
July 24, 2023

Media Contact
Sarah Bradley, (515) 462-9749, sbradley@madisonhealth.com

**Madison County Calls Upon Community:
Take the CHNA Survey to Shape Our Healthcare Future**

Winterset, IA - Madison County Health Care System and Madison County Public Health are excited to announce the launch of a crucial Community Health Needs Assessment (CHNA) survey, designed to gather valuable insights from our community members. This survey aims to identify and address the healthcare needs of our diverse community, and we invite every resident to participate.

The CHNA survey is an essential step in improving the health and well-being of Madison County residents. It will provide critical data on various health-related factors, including social, economic, and environmental determinants, enabling us to develop targeted strategies and action plans for the betterment of our community's health.

How to Participate:
Participating in the survey is easy and can be done from the comfort of your home. Simply visit the survey link: https://loom.ly/iaVwe_Q to complete the questionnaire. Your input is invaluable and will play a significant role in shaping the future of healthcare services in Madison County.

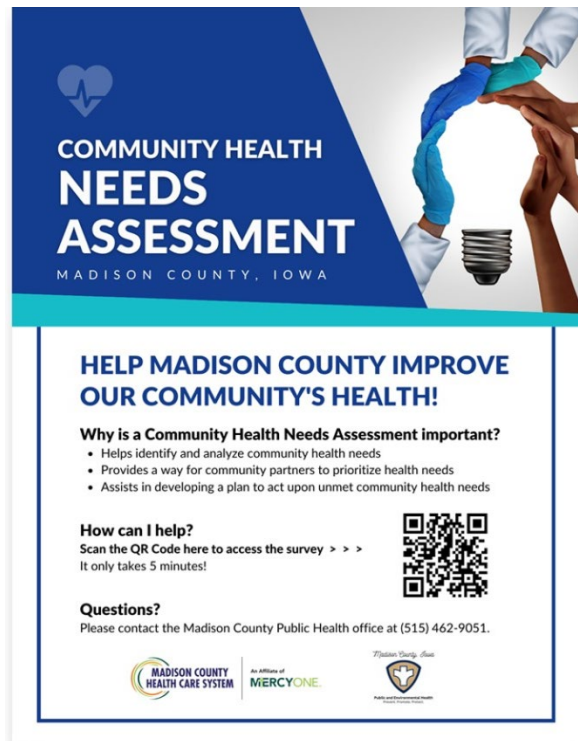
Your Voice Matters:
We believe that the residents of Madison County are our greatest asset when it comes to understanding the health needs of our community. By taking the CHNA survey, you contribute directly to this effort, helping us identify areas of concern and prioritize healthcare initiatives that will have a meaningful impact on our community's well-being.

About CHNA:
The Community Health Needs Assessment (CHNA) is a comprehensive process that evaluates healthcare needs within the community. It involves collaboration with diverse stakeholders, including community members, healthcare providers, public health agencies, and nonprofits, to ensure that the assessment accurately reflects the community's unique needs and challenges. The results of this assessment will guide resource allocation, prioritization of healthcare interventions, and improvements in healthcare accessibility and quality.

Stay Informed:
Results from this survey and our efforts in data collection will be made available later this year.

We thank you in advance for your participation and for helping us make Madison County a healthier and happier place to live.

###




**COMMUNITY HEALTH
NEEDS
ASSESSMENT**
MADISON COUNTY, IOWA

**HELP MADISON COUNTY IMPROVE
OUR COMMUNITY'S HEALTH!**

Why is a Community Health Needs Assessment important?

- Helps identify and analyze community health needs
- Provides a way for community partners to prioritize health needs
- Assists in developing a plan to act upon unmet community health needs

How can I help?
Scan the QR Code here to access the survey >>>
It only takes 5 minutes!



Questions?
Please contact the Madison County Public Health office at (515) 462-9051.

MADISON COUNTY HEALTH CARE SYSTEM | An Affiliates of MERCYONE | Madison County, Iowa

MADISON COUNTY COMMUNITY HEALTH ASSESSMENT 2023



Community Health Needs Assessment

Madison County Health Care System and Madison County Public Health are conducting a Community Health Needs Assessment (CHNA) to identify and analyze community health needs. The process provides a way for community partners to prioritize health needs and to plan and act upon unmet community health needs.

Information is gathered through several methods, including online surveys, community focus groups, interviews with stakeholders and feedback from the patients we serve. We know it is a busy time of year, but we hope you will take roughly 5 minutes to complete the survey to help us better identify the health need in our community.

[Community Health Needs Assessment](#)

Thank you in advance for your participation in this important survey. If you have any questions about the survey, please contact the Madison County Public Health office at (515) 462-9051.



Community Health Needs Assessment

Have you had a chance to take the community health needs assessment yet?

Madison County Health Care System and Madison County Public Health are conducting a Community Health Needs Assessment (CHNA) to identify and analyze community health needs. The process provides a way for community partners to prioritize health needs and to plan and act upon unmet community health needs.

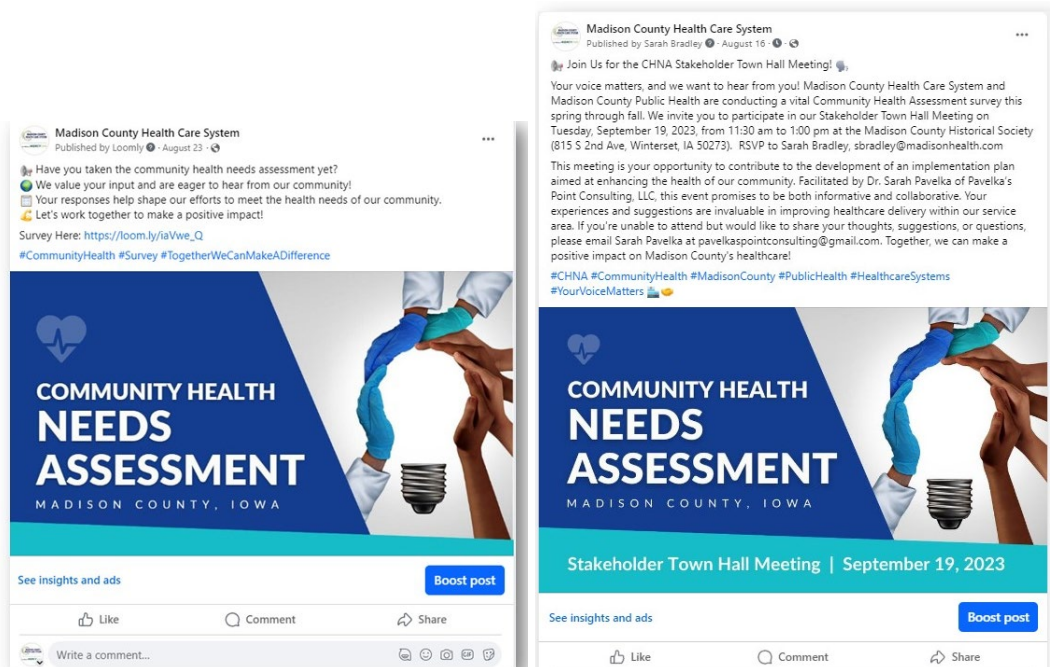
We hope that you would take roughly 5 minutes to complete the survey to help us better identify the health needs in our community. Please click on the green button below to take the survey today. We appreciate your time and input!

[Community Health Needs Assessment Survey](#)

MADISON COUNTY COMMUNITY HEALTH ASSESSMENT 2023

EMPLOYEE AND COMMUNITY COMMUNICATIONS

The following as a direct emailing campaign for the employees in and around the Madison County Health System and within the county. The organizations also posted the information in the local governmental mailings, Facebook ads, local newspaper ads, and Chamber of Commerce. This was also distributed in local grocery stores, places of worship, restaurants, community events, school events, and local gathering establishments. Social media spotlights were also sent to the followers of both the hospital and public health.



Analyze the Data (CHA Steps 5 continued)

During and following the community survey process, data from external sources (secondary data) were being collected and analyzed. This included data from sources such as Robert Wood Johnson County Health Rankings, City Data, Vital Statistics, etc. Survey data was considered primary data research and collected public health needs, perceptions, satisfaction with care and services for both public, private, and governmental agencies serving the Madison County, Iowa area. This data can be found in the following charts in Data Details section with both the CHA Survey Data (detailed primary) and Town Hall meeting outcomes (primary).

Both the external, secondary data, and the initial analysis of the survey outcomes (primary data) was analyzed and presenting in the September 2023 town Hall meeting. Top initial results were presented for the key stakeholders to continue to analyze, prioritize, and support with realistic objectives for Madison County Health System and Madison County, Iowa.

MADISON COUNTY COMMUNITY HEALTH ASSESSMENT 2023

Document and Define Priorities (CHA Steps 6)

Community leadership should always be involved with the determination and prioritization of key actions within a community (service area). Members will not only buy-in to the mission of the actions at a higher support level, but they will also often provide key resources that are needed for such action, which are vital to the actions success and often cannot happen with only hospital supporting resources. Town halls are a focus group type setting where members can provide insight, consensus, and assist with prioritization of health issues. These sessions gathered input from key stakeholders, start priorities, and encourage on-going dialog between entities.

Town Hall Research Process (Engage & Prioritize with Stakeholders)

Entities invited to the Town Hall meeting included local hospital, public health, mental health providers, service providers, employers, local residents, faith-based leadership, school leadership, business leaders, local government officials, and those that receive care (including persons with chronic conditions, un-insured, low-income, and minority groups).

Key community stakeholder groups were invited to the September 19, 2023, Town Hall meeting. The Town Hall meeting was held September 19, 2023, from 11:30 am to 1:00 pm. At the Town Hall meeting, a short informational presentation was given, facilitation of priorities from the survey and health ranking information was completed, and key findings were determined out of one 90-minute meeting.

TOWN HALL GENERAL PUBLIC INVITE (LETTER, EMAIL, SOCIAL MEDIA)

Public notice sent to local newspapers, hospital websites, and local posting for attendance at the Town Hall meeting. All community members were invited to attend, and snacks were provided.

Madison County Health Care System
News Release
An Affiliates of MERCYONE

For Immediate Release
August 21, 2023

Media Contact
Sarah Bradley, (515) 462-9749, sbradley@madisonhealth.com

**Join Us for the Madison County CHNA Stakeholder Town Hall Meeting:
Shaping the Future of Community Health**

Winterset, IA - Madison County Health Care System and Madison County Public Health are excited to invite you to participate in a pivotal event that will help shape the future of community health in our area.

Event Details
Date: Tuesday, September 19, 2023
Time: 11:30 am - 1:00 pm
Location: Madison County Historical Society (815 S 2nd Ave, Winterset, IA 50273)

We are currently conducting a comprehensive Community Health Assessment survey from spring through fall, and your input is essential. To facilitate this process, we are hosting a Stakeholder Town Hall Meeting on September 19th, 2023. This event promises to be a vital platform where your experiences and suggestions will directly contribute to improving healthcare delivery within our service area.

Why Attend?

- Gain insights into the health needs identified in the 2023 survey.
- Collaborate in small groups to generate ideas for specific projects addressing identified community health needs.
- Facilitated by Dr. Sarah Pavelka, an expert from Pavelka's Point Consulting, LLC, who will prepare the final report.

Your input is invaluable, ensuring representation from all segments of our service area and meeting federal requirements. The focus group will commence at 11:30 am, and a light lunch with refreshments will be provided.

RSVP: To confirm your attendance, kindly contact Sarah Bradley at (515) 462-9749 or sbradley@madisonhealth.com.

Unable to Attend?
If you are unable to attend but wish to contribute your thoughts, suggestions, or questions, please email Sarah Pavelka at pavelkaspointconsulting@gmail.com. Your input is highly appreciated and will be considered during the event.

The results of this assessment will be made available later this year. Thank you for joining us in gaining valuable insights into the health needs of our community.

###

Please Join us!
Community Health Needs Assessment
Stakeholder Town Hall Meeting

TUESDAY, SEPTEMBER 19, 2023
11:30 am - 1:00 pm

Madison County Historical Society
815 S 2nd Ave, Winterset, IA 50273

A light lunch will be provided for all of those attending.

Information from the survey and meeting will be used by Madison County Health Care System and Madison County Public Health to develop an implementation plan to improve the health of our community, based on the greatest health concerns.

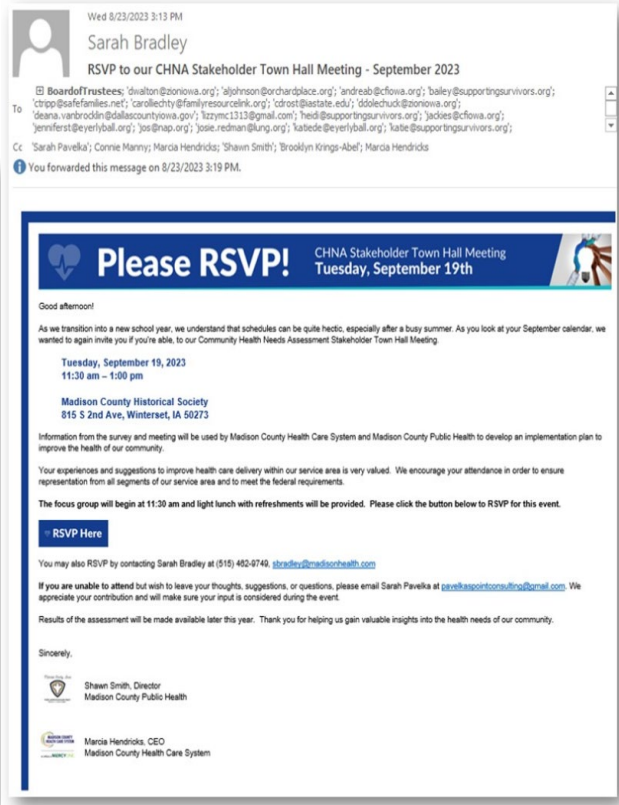
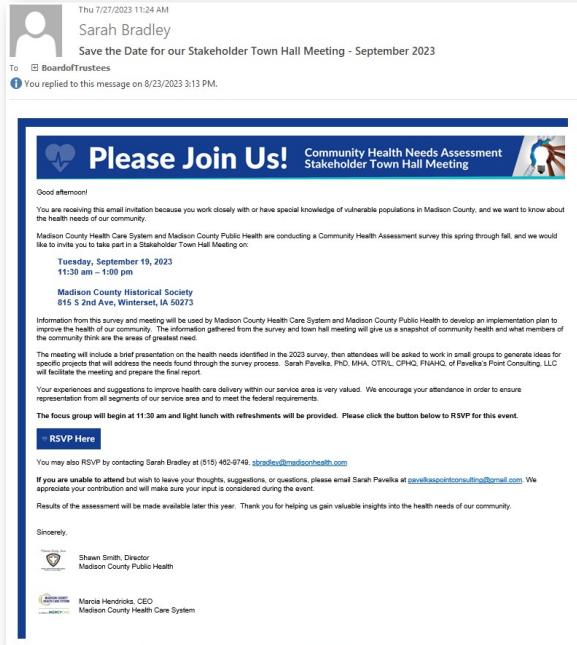
Facilitated by: Sarah Pavelka, PhD, MHA, OTR/L, CPHQ, FNAHQ
Pavelka's Point Consulting, LLC

AGENDA

- Review of Assessment Process
- Review of Past Action Items
- Summary of Current Assessment Results
- Community Perspective
- Next Steps

Questions?
Please contact Sarah Bradley
(515) 462-9749
sbradley@madisonhealth.com

MADISON COUNTY COMMUNITY HEALTH ASSESSMENT 2023

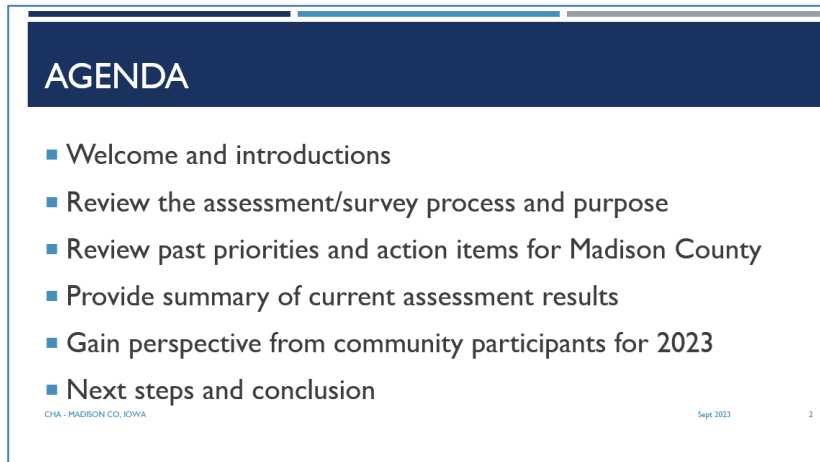


TOWN HALL AGENDA

The following Agenda and Power Point were completed at the September 19, 2023 Town Hall meeting. At the end of the meeting, it was determined to have an initial list of community priorities from the analysis of primary and secondary research data. These initial priorities list will be further discussed with a steering committee of community leadership and represent community-based organizations

MADISON COUNTY COMMUNITY HEALTH ASSESSMENT 2023

which can address the health concerns. This group, considering the priority and input from the Town Hall meeting will strategies and formulate final action plans for Madison County Health System and Madison County, Iowa health needs.



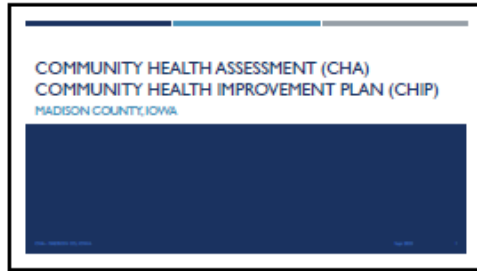
AGENDA

- Welcome and introductions
- Review the assessment/survey process and purpose
- Review past priorities and action items for Madison County
- Provide summary of current assessment results
- Gain perspective from community participants for 2023
- Next steps and conclusion

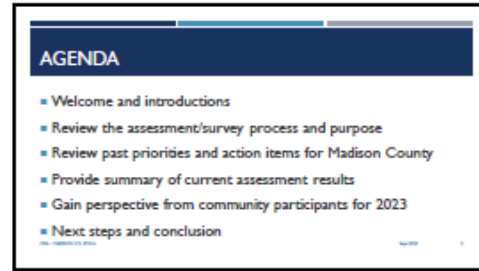
CHA - MADISON CO, IOWA Sept 2023 2

TOWN HALL POWER POINT PRESENTATION

The following power point presentation (please see image below for complete slide deck) was presented to key community stakeholder groups at the September 2023 Town Hall meeting.



1



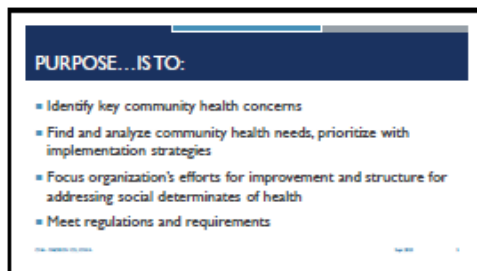
2



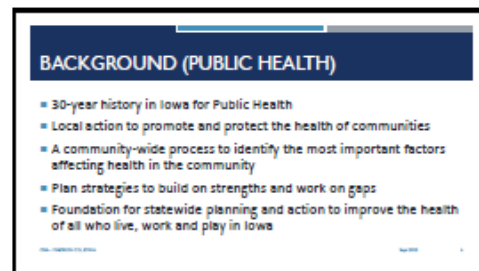
3



4



5



6

BACKGROUND (HOSPITALS)

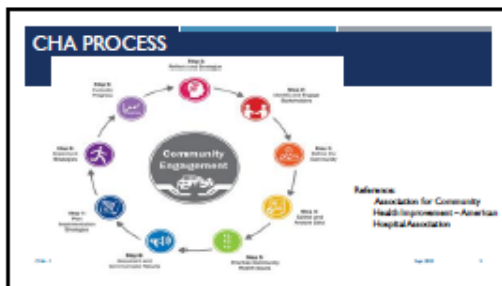
- Patient Protection and Affordable Care Act of 2012
 - 4 requirements
 - Written Financial Assistance Policies
 - Limitation of charges for emergency or necessary care
 - Adherence to new billing and collections restrictions
 - To perform Community Health Needs Assessments
- Definition of Community Health Needs Assessments (CHNA):
 - CHNA are ongoing processes that systematically evaluate the health needs of the community to improve the health of the population

7

REQUIREMENTS

- Five steps outlined order to complete a CHA
 - Define the community
 - Assess communities' health needs
 - **Include input representing broad interests of the community**
 - Document the CHA
 - Make submit a report and make it available to public

8



9

PAST PRIORITIES AND ACTION ITEMS

10

PRIORITIES – PAST

- Chronic disease and hospitalizations (adults)
- Access to care/specializations(all populations)
- Crisis care, mental health, substance abuse
- Immunizations, prevention of disease
- Sexual health / STD
- Individual preparedness in all populations (ability to recover from health incident)

11

CURRENT ASSESSMENT RESULTS

12

MADISON COUNTY COMMUNITY HEALTH ASSESSMENT 2023

IMPROVEMENTS – 2019

(NOTE: % MAY NOT ADD UP TO 100% - ALMOST ALL QUESTIONS WERE OPTIONAL)

Priority Area	Not a Problem	Somewhat a Problem	Still a Problem
Care coordination and extending rural care	27%	27%	46%
Access to mental health services at hospital	8%	22%	47%
Access to mental health services in the community	5%	22%	32%
Right doctor	8%	42%	28%
Access to visiting specialists	20%	42%	18%
Transportation for health services	12%	44%	24%
Illegal drug and alcohol use	3%	41%	41%
Child/adolescent use	8%	27%	24%
Substance use and support	7%	20%	24%

13

STATE HEALTH RANKINGS – 2023

SOURCE: COUNTY HEALTH RANKINGS RANK: 11TH

Health Category	Madison County	Best	Worst
Quality of Life	4200	4400	4000
Access to Care	100	100	100
Health Behaviors	100	100	100
Additional Health Outcomes (not included in overall ranking)	100	100	100

15

STATE HEALTH RANKINGS – 2023 (CONT.)

SOURCE: COUNTY HEALTH RANKINGS RANK: 15TH

Health Behavior	Madison County	Best	Worst
Smoking	100	100	100
Alcohol Use	100	100	100
Physical Activity	100	100	100
Diabetes	100	100	100
Obesity	100	100	100
Additional Health Behaviors (not included in overall ranking)	100	100	100

16

STATE HEALTH RANKINGS – 2023 (CONT.)

SOURCE: COUNTY HEALTH RANKINGS RANK: 11TH

Clinical Care	Madison County	Best	Worst
Heart Disease	100	100	100
Stroke	100	100	100
Diabetes	100	100	100
Additional Clinical Care (not included in overall ranking)	100	100	100

17

STATE HEALTH RANKINGS – 2023 (CONT.)

SOURCE: COUNTY HEALTH RANKINGS RANK: 5TH

Social & Economic Factors	Madison County	Best	Worst
Unemployment	100	100	100
Health Insurance	100	100	100
Health Literacy	100	100	100
Additional Social & Economic Factors (not included in overall ranking)	100	100	100

18

STATE HEALTH RANKINGS – 2023 (CONT.)

SOURCE: COUNTY HEALTH RANKINGS RANK: 20TH

Physical Environment	Madison County	Best	Worst
Air Quality	100	100	100
Drinking Water	100	100	100
Additional Physical Environment (not included in overall ranking)	100	100	100

19

MADISON COUNTY COMMUNITY HEALTH ASSESSMENT 2023

Madison County Health Assessment 2023

PERCEPTIONS OF HEALTH & SERVICES - 2023

Needs Attention in the Community	Percentage Selected
Health (that exists) = 41.7%	40.9%
Health equity	42.8%
Public transportation for healthcare	34.9%
Other assistance programs	34%
Public awareness of health services	34%
Family assistance programs	27%
Access to urgent care services	24.2%
Healthcare provider access	22.7%
Nutritional education and access	22.7%

20

SOCIAL DETERMINATES OF HEALTH - 2023

- Food shortage (no=90%)
- Utility shut off (cannot pay bill) (no=94%)
- Loss of housing (within 2 months) (no=95%)
- Childcare access (prevents working or school) (no=84%)
- Need healthcare, avoid because of cost (no=95%)
- Lack of transportation (to key appointments/work) (no=91%)
- Missed work because of transportation (no=97%)
- Reading ability (health materials or other) (no=93%)
- Safety at home (no=93%)

21

2023-2026-2028 AREAS AND ACTIVITIES

22

OBJECTIVES AND STRATEGIES... THINK ABOUT

- Population's overall health
- Internal health services (hospital and public health)
- Community and capacity building
- Community orientated education, wellness, and support

23

PRIORITIES AND ACTIONS


- Review current results and questions
- Define the current strengths for Madison County
 - What does it take to sustain these strengths?
- Determine top priorities and improvement areas
 - What needs to be improved or changed?
- Suggestions for actions

24

NEXT STEPS AND CONCLUSION

25

Madison County Health Assessment 2023



SARAH PAVELKA, PHD, MHA, OTR/L, CPHQ, FNAHQ
 PAVELKA'S POINT CONSULTING, LLC
 641-780-0810
 PAVELKASPT@GMAIL.COM

26

MADISON COUNTY COMMUNITY HEALTH ASSESSMENT 2023

TOWN HALL ATTENDING KEY STAKEHOLDERS (ENGAGEMENT AND PRIORITIZATION)

The following is a list of community members (identified key stakeholders and interested community members) that were able to participate in the Town Hall meeting. In all there were 31 attendees at the September 2023 meeting.

Marion County CHA Town Hall Meeting – May 1, 2019		
Name	Organization - Title	Email
Jaclyn Young	Public	jaclynyoung92@gmail.com
Brad Johnson	Warren County	bradj@warrencountyia.org
Jozette McCutchan	Madison Health	jmccutchan@madisonhealth.com
Shari Carlson	Madison Health	Scarlson@madisonhealth.com
Jennifer Jolly	Turning Point	jlivingston@turningpointevals.com
Shawn Smith	Madison County	ssmith@madisoncounty.iowa.gov
Sarah Pavelka	Pavelka's Point Consulting	pavelkaspointconsulting@gmail.com
Jayci Kuhns	Winterset Schools	jkuhns@winterset.k12.ia.us
Heather Stancil	Madison Health	hstancil@madisoncounty.iowa.gov
Veronica McVay	Warren County	Veronicam@warrencountyia.org
Chris Nolte	Public	Cnolte1410@gmail.com
Sarah Bradley	Madison Health	Sbradley@madisonhealth.com
Shelley Flanery	Gregory Center	shelley.flanery@stgregoryctr.com
Debra Schrader	For Our Kids	4rkidseci@gmail.com
Kathleen Rush	Family Resources	crisp@familyresourcelink.org
Connie Manny	Madison Health	cmanny@madisonhealth.com
Marcia Hendricks	Madison Health	mhendricks@madisonhealth.com
Bobbi Sawhill	Madison County	bsawhill@madisoncounty.iowa.gov
Sarah Gibson	Indianola Cluster	indianolaclustercppc@gmail.com
Justin Gross	Winterset Schools	jgross@winterset.k12.ia.us
Emily Walton	Madison Health	ewalton@madisonhealth.com
Laretta Paulin	Madison County	lpaulin@madisoncounty.iowa.gov
Rebekah Gillespie	Madison Health	rgillespie@madisonhealth.com
Mildred Chihak	HIRTA	mchihak@ridehirta.com
Jennifer Jackson	Madison Health	jjackson@madisonhealth.com
Kim Hulbert	Madison Health	Khulbert@madisonhealth.com
Nathan Mantress	Winterset Schools	nmantress@winterset.k12.ia.us
Clarice Blanchard	Madison Health	Cblanchard@madisonhealth.com
Ann Gonneress	Public	Not provided
Jennifer Elkin	Public	Not provided
John Sudderth	public	Not provided

Town Hall Outcomes

The following were the outcomes from the September 19, 2023, Town Hall meeting. These outcomes can be further explored in the Detailed Data/ Town Hall Meeting Outcomes. The outcomes were

MADISON COUNTY COMMUNITY HEALTH ASSESSMENT 2023

formulated from both primary data (survey) and secondary data (including County Health Rankings). The outcomes were compiled from large and small group round-robin brainstorming sections and then outlined into affinity groups. The following four affinity groups were seen in both meeting sessions.

Priorities
1. Mental Health Services: Assess and support depth and breadth of services for Mental Health needs in the communities.
2. Substance Abuse: Assess and support depth and breadth of services for substance use and abuse in the communities.
3. Workforce Shortages: Attract and retain employees and workers in/into the county for all sectors.
4. Preventative and Supportive Services: Communicate, convene, and spread information knowledge for prevention and support services.
5. Transportation Services: Services for the elderly and residents in need in the community.
6. Health and Economic Stability Coalition: Coalition group to address the services and access for community health and economic stability needs.

Community Strategy Formulation and Action Planning

Planning for Improvement Strategies (CHA Steps 7 & 8)

To complete the final steps of the process, Madison County, Iowa (Madison County Health System and Madison County Public Health) community leadership held meetings starting September 19, 2023. During this step of the Community Health Assessment, Madison County, Iowa community leadership gathered all primary and secondary data, completed a relevance and achievable check, and determined 20 SMART goals (tactics) for their improvement of the community's health. SMART goals are specific, measurable, achievable, relevant, and time-oriented action plans for improvements in the community.

This step also includes distribution of the CHA final report. Starting November 15, 2023, Madison County Health System and Public Health department will be able to be distributed to the community. This report will be sent electronically to all participating and interested community partners for Madison County Public Health and Madison County Health System. The report will be provided, along with prior reports, on the Madison County Health System website. Paper copies will be distributed to interested parties as requested to Madison County Health System.

Community Health Improvement Plan (CHIP) 2023

MADISON COUNTY COMMUNITY HEALTH ASSESSMENT 2023

Community Health Improvement Plan (CHIP) & Tactics – Madison County Public Health

Community Health Assessment results - starting 11/1/2023 to 12/31/2028

Health Areas of Need (Goals)		"Specific Actions" to address community health need (Tactics)	LEAD	Partners	Timeframe	Performance Indicators: Data Sources/ Collection Timing
1 Mental Health						
Assess and support depth and breadth of services for Mental Health needs in the communities	A	Increase providers and access	Madison County Health System (MCHS)	MCHS, Madison County Public Health (MCPH),	Year 3-5	Availability of mental health resources in the community including patient treatment options
	B	Employment opportunities for providers			Year 3-5	
	C	Funding reimbursement for shortage – barrier for services			TBD	
	D	Improvement of community responses (example EMT education)	Coalition		Year 1	(TBD)
	E	Access to transportation to and from services in other communities	(TBD)		Year 2-3	Availability at certain times or days, even limited at first
		Progress Notes:				
2 Substance Abuse						
Assess and support depth and breadth of services for substance use and abuse in the communities	A	Assess and create plan for substance abuse prevention and support in the communities	Coalition	MCHS, MCPH	Year 1-2	Presence of substance abuse related issues
	B	Drugs and substance use and presentation services/response	Coalition		Year 3-5	Actively providing services for the communities (year 1 baseline)
	C	Increased access to services	(TBD)		Year 3-5	Increase (15% year over year) from baseline number of services provide and the number of recipients for each service
		Progress Notes:				
3 Workforce Shortages						
Attract and retain employees and workers in/into the county for all sectors	A	Partnering with community partners for attracting and retaining workers into the county	Coalition	Coalition, CICS,	(TBD)	(TBD)
	B	Investigate housing options for low-income workers available within the community.	CICS		(TBD)	(TBD)
	C	Investigate incentives for attracting families into the county for work, education, and residence	(TBD)		(TBD)	(TBD)
		Progress Notes:				
4 Preventative and Supportive Services						
Communicate, convene, and spread information	A	Providing prevention and support services (i.e. immunizations) to underserved population and or communities	MCPH	MCHS, MCPH	Year 1	Actively providing services for the underserved communities (year 1 baseline)

MADISON COUNTY COMMUNITY HEALTH ASSESSMENT 2023

Community Health Improvement Plan (CHIP) & Tactics – Madison County Public Health

Community Health Assessment results - starting 11/1/2023 to 12/31/2028

Health Areas of Need (Goals)	Specific Actions" to address community health need (Tactics)	LEAD	Partners	Timeframe	Performance Indicators: Data Sources/ Collection Timing	
(knowledge) for prevention and support services	B	Address the provision of (potential) support and outreach services to communities across the county	Coalition		Year 2	Increase (15% year over year) from baseline number of services provide and the number of recipients for each service
	C	Distribution of information and knowledge of services at Community "sharing" meetings	Coalition		Year 1	Active (systematic) efforts (including knowledge sharing) from partnerships
Progress Notes:						
5 Transportation services in County						
Services for the elderly in the community	A	Assess and create plan for transportation services and support in the communities	HRTA	Coalition	(TBD)	Actively providing services for the underserved communities (year 1 baseline)
	B	Improvement of services through availability and access for transportation and medical response services				Increase (15% year over year) from baseline number of services provide and the number of recipients for each service
	C	Improvement for funding resources and options for services				Active (systematic) efforts (including knowledge sharing) from partnerships
Progress Notes:						
6 Health and Economic Stability Coalition for County						
Coalition group to address the services and access for community health and economic stability needs	A	Assessment for the need of community coalition ("action" group)	Coalition	MCHS, Madison County Public Health (MCPH),	Year 1	Provide a list of opportunities for potential services in communities
	B	Create scope of work and purpose for group that will actively address health and economic stability needs within the communities			Year 1-2	Actively providing services for the underserved communities (year 1 baseline)
	C	Plan and develop initiatives for community "health" coalition.			Year 1-5	Increase (15% year over year) from baseline number of services provide and the number of recipients for each service
Progress Notes:						

MADISON COUNTY COMMUNITY HEALTH ASSESSMENT 2023

Prior Assessment Action Plans

During the years 2017 to 2023, Madison County Health System, Madison County Public Health, and Community groups along with key community partners worked on improving seven (7) strategic tactics for the improvement of the community's health. Actions for improvements included but not limited to chronic disease and hospitalization (adults), access to care and specializations (all populations), crisis care, mental health and substance abuse treatment, immunizations, disease prevention, Sexual health and sexual transmitted diseases, and individual preparedness in all populations (ability to recover from incident).

There were improvements in two (2) of the seven (7) areas. The three (3) other areas were slightly improved in their ratings. The improvements did not move the issues to "not a problem (three (3) of the areas)"; however, did move the issues to "Somewhat of a Problem" in a majority of the participants taking the survey and during Town Hall prioritization (CHA steps 5 and 6). In the chart below was provided to the participants at the Town Hall meeting (September 2023) and signifies that Mental Health Services and Substance Use/Abuse still remain a concern for the survey participants.

IMPROVEMENTS – 2019

(NOTE: % MAY NOT ADD UP TO 100% - ALMOST ALL QUESTIONS WERE OPTIONAL)

Priority Area	Not a Problem	Somewhat a Problem	Still a Problem
Care coordination and expanding rural care	21%	51%	16%
Access to mental health services at hospital	8%	33%	47%
Access to mental health services in the community	5%	32%	52%
Fight obesity	8%	43%	35%
Access to visiting specialist	30%	43%	15%
Transportation for health services	18%	44%	24%
Illegal drug and alcohol use	5%	41%	41%
Opioid / narcotic use	8%	37%	36%
Suicide prevention and support	7%	20%	34%

Evaluation of Progress on Key Priorities and Strategic Alignment (CHA Step 9)

Madison County Health System and Madison County Public Health departments will continually monitor the action plans for changes and adjustments as key findings present within three years. This assessment and findings will be incorporated into future strategic planning efforts and include a systematic cycle of improvement. Improvements will be completed using performance excellence tools, including but not limited to the Plan, Do, Study, Act improvement cycle and will

MADISON COUNTY COMMUNITY HEALTH ASSESSMENT 2023

include as many community partners, agencies, and interested individuals as possible for best outcomes and sustainability.

COMMUNITY (SERVICE AREA) HEALTH STATUS

Primary Research Findings

In summer through fall 2023, Madison County Health System sponsored/conducted primary research (survey) to all residents residing or receiving services in their primary service area, with 176 individual replies.

REPLIES BY ZIP

Madison County CHA 2023 Sample by Zips			
#	Zips	County	Returns (% of Total)
1	Winterset, IA- 50273	Madison	79.5%
2	Peru, IA - 50222	Madison	4%
3	Lorimor, IA - 50149	Madison	3.4%
4	Cumming, IA - 50061	Madison	1.1%
5	Earlham, IA - 50072	Madison	1.1%
6	St Charles, IA - 50240	Madison	1.1%
7	Truro, IA - 50257	Madison	1.1%
8	De Soto, IA - 50261	Madison	1.1%
9	Zip Codes of 50003, 50070, 50073, 50125, 50229, 50250, 50263, 50317, 50830, 50846, 50849, 50858, 59972		Each 0.6%

OVERALL QUALITY OF SERVICES IN THE COMMUNITY (SERVICE AREA)

Community Healthcare Assessment 2023		
In general, how would you rate the overall quality of the healthcare delivered to your community?	Madison Co (2023) n = 176	Indicator
Top 2 Boxes	142 (80.6%)	
Very Good	64 (36.6%)	
Good	78 (44.3%)	
Fair	26 (14.8%)	
Poor	6 (3.4%)	
Very Poor	2 (1.1%)	
Bottom 2 Boxes	8 (4.5%)	

MADISON COUNTY COMMUNITY HEALTH ASSESSMENT 2023

RATING OF HEALTH SERVICES

Community Healthcare Assessment 2023		
How would you rate the following health services?	Poor / Very Poor %	
	Madison Co (2023) n = 176	Indicator
Ambulance Services	6.8%	Green
Chiropractor	6.3%	Green
Dentists	3.4%	Green
Emergency Room	4.5%	Green
Eye Doctor / Optometrist	11.3%	Yellow
Family Practice Medical Clinic Services (Primary)	5.6%	Green
Home Health	5.6%	Green
Hospice	1.7%	Green
Hospital Inpatient Services	6.25%	Green
Mental Health Services	27.3%	Red
Nursing Home	33.4%	Red
Outpatient Services (lab, radiology, etc.)	5.1%	Green
Pharmacy	2.2%	Green
Pediatrics (Children's Health)	3.4%	Green
Public Health Department	7.9%	Green
Rehab Services	5.1%	Green
School Nurse	4.5%	Green
Specialist Physician care	8.5%	Yellow
Teen Health (drinking, abuse, safety, pregnancy)	18.2%	Red

CAUSES OF DISEASE OR DISABILITY IN THE COMMUNITY

Community Healthcare Assessment 2023		
In your opinion, how much of a problem are the following causes of diseases or disability in your community?	Major Problem %	
	Madison Co (2023) n = 176	Indicator
Mental Disorders	51.2%	Red
Obesity	44.3%	Red
Substance Abuse	40.3%	Red
Cancer	36.9%	Red
Drug Abuse	35.3%	Red

MADISON COUNTY COMMUNITY HEALTH ASSESSMENT 2023

Diabetes	32.9%	
Trauma	29.5%	
Suicide	27.3%	
Heart Disease	23.9%	
Stroke	13.1%	
Respiratory Disease	9.1%	
Pneumonia / Flu	6.8%	
Sexually Transmitted Diseases	3.9%	

HEALTH NEEDS BY AGE

Community Healthcare Assessment 2023		
How well do you feel our local health care providers are doing in addressing the health needs of the following age groups?	Poor / Very Poor %	
	Madison Co (2023) n = 176	Indicator
Infants	3.97%	
Age 1 - 12	5.1%	
Age 13 -17	3.4%	
Age 18 - 25	4.5%	
Age 26-44	4.5%	
Age 45 - 64	3.97%	
Age 65 - 84	5.1%	
Over 85	6.8%	

HEALTH SERVICES OUTSIDE OF THE COUNTY

Community Health Assessment 2023		
Over the past 2 years, did you or your household receive health care services outside of your county?	Madison Co (2023) n = 176	Indicator
Yes	84.1%	
No	15.9%	
Totals	100%	

MADISON COUNTY COMMUNITY HEALTH ASSESSMENT 2023

Please list the health care services you or your household member(s) have received outside of your county: Number of replied	Madison Co (2023) n = 176	
Allergy	3	
Cancer/Oncology	1	
Cardiology/Heart Disease	2	
Chiropractor	4	
Dental	5	
Dermatology	6	
Diagnostics	4	
Emergency Room/Urgent Care	7	
ENT	2	
Eye / Surgery	5	
Gastroenterology	2	
Gynecology	10	
Mental Health	8	
Neurology	2	
OB	11	
Orthopedics Surgery	8	
Pain management	2	
Pediatric	3	
Podiatry	0	
Primary Care	13	
Physical Therapy	4	
Sleep/Apnea	1	
Specialty (Pulmonary, Vascular, Neurology, Urology)	6	
Surgery	6	
Veterans Affairs (VA)	3	
If offered, would you have received the services locally?	% of Replies	
Yes	43.8%	
Maybe	37%	
No	19.2%	

MADISON COUNTY COMMUNITY HEALTH ASSESSMENT 2023

IMPROVEMENT OF SERVICES

Community Health Assessment 2023			
Are there health care services in your community or neighborhood that you feel need to be improved and or changed? (Please be specific)			
Rank	Services	# Replies	% of Replies
1	Mental Health Services	14	7.95%
2	Nursing Home/Access to services for elderly	9	5.11%
3	Teen Health (mental health)	4	2.27%
3	Urgent Care options and access	4	2.27%
3	Wellness and Preventative Care	4	2.27%
6	Podiatry	1	0.57%
	Pediatrician	1	0.57%
	Family / Primary Care	1	0.57%
	Optometrist	1	0.57%
	Transportation for elderly	1	0.57%
	Home Health	1	0.57%
	Inpatient services	1	0.57%
13	Women's Health	1	0.57%

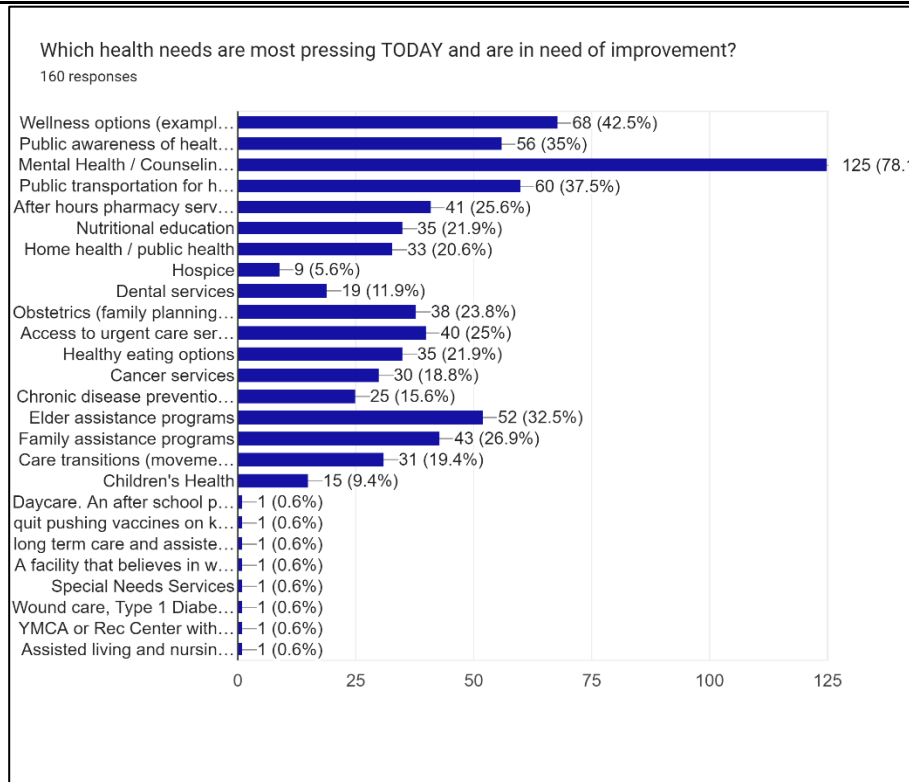
THREE YEAR ACTION PLAN IMPROVEMENTS

Community Health Assessments 2023			
Please rate the following areas for your community.	Not a Problem	Somewhat of a Problem	Still a Problem
Care coordination and expanding rural care	37 (21.0%)	85 (48.3%)	30 (17.0%)
Access to mental health services at the hospital	18 (10.2%)	55 (31.3%)	83 (47.2%)
Access to mental health services in the community	12 (6.8%)	56 (31.8%)	89 (50.6%)
Fight obesity	18 (10.2%)	76 (43.2%)	59 (33.5%)
Access to visiting specialist	55 (31.3%)	74 (42.1%)	26 (14.8%)
Transportation for health services	36 (20.5%)	73 (41.5%)	42 (23.9%)
Illegal drug and alcohol use	14 (7.9%)	69 (39.2%)	69 (39.2%)
Opioid / narcotic use	17 (9.6%)	71(40.3%)	62 (35.2%)
Suicide prevention and support	15 (8.5%)	75 (42.6%)	62 (35.2%)

MADISON COUNTY COMMUNITY HEALTH ASSESSMENT 2023

PRESSING ISSUES FOR TODAY'S IMPROVEMENTS

Community Health Assessment 2023			
Which health needs are most pressing TODAY and are in need of improvement?			
Rank	Health Needs	# Replies	% of Total Replies
1	Mental Health/Counseling	125	78.1%
2	Wellness options and services	68	42.5%
2	Public transportation to health services	60	37.5%
3	Public awareness of options	56	35%
4	Elder assistance programs	52	32.5%
5	Family Assistance Programs	43	26.9%
6	After hours Pharmacy	41	25.6%
7	Access to Urgent Care	40	25%
8	Obstetrics (family planning)	38	23.8%
9	Healthy eating options/Nutrition education	35	21.9%
10	Home Health/Public Health	33	20.6%
(Must consider that the same people who voted for multiple categories)			



RATING OF SERVICES FOR COMMUNITY

MADISON COUNTY COMMUNITY HEALTH ASSESSMENT 2023

Community Health Assessment 2023								
How would you rate each of the following in your community? (*Public Health services)	Very Poor	Poor	Fair	Good	Very Good	Not Aware/ Not Applicable	Very Poor + Poor	Good + Very Good
Alcohol use and treatment programs	9	32	34	21	7	67	41 (23.2%)	28 (15.9%)
Blood pressure clinics*	5	23	45	22	15	57	28 (15.9%)	37 (21.0%)
Caregiver training programs	2	16	37	30	9	76	18 (10.2%)	39 (22.1%)
Disease investigations*	6	14	39	33	20	55	20 (11.3%)	53 (30.1%)
Drug abuse programs	9	25	47	19	6	64	34 (19.3%)	25 (14.2%)
Early childhood development programs	2	10	35	62	25	35	12 (6.8%)	87 (49.4%)
Emergency preparedness*	0	5	15	74	69	8	5 (2.8%)	143 (81.3%)
Flu Clinics*	2	7	32	55	45	27	9 (5.1%)	100 (56.8%)
Foot Care*	2	13	42	46	15	52	15 (8.5%)	61 (34.7%)
Health education*	6	13	50	44	17	37	19 (10.8%)	61 (34.7%)
Homemaker services*	5	16	46	29	12	61	21 (11.9%)	41 (23.3%)
Immunization services*	2	6	35	60	48	19	8 (4.5%)	108 (61.3%)
COVID-19 services*	5	6	32	48	49	28	11 (6.25%)	97 (55.1%)
Obesity prevention and treatment	5	23	41	16	5	79	28 (15.9%)	21 (11.9%)
Prevention of falls	1	10	42	21	9	87	11 (6.25%)	30 (17.0%)
Reduction of opiate/narcotic use	7	29	43	12	8	72	36 (20.4%)	20 (11.3%)
Spiritual health support	5	14	31	48	26	46	19 (10.8%)	74 (42.0%)
Tobacco prevention / cessation programs*	5	22	60	20	11	49	27 (15.3%)	31 (17.6%)
Transportation (bus) services	18	30	39	43	17	26	48 (27.3%)	60 (34.1%)
Violence prevention	10	15	43	16	7	76	25 (14.3%)	23 (13.1%)

MADISON COUNTY COMMUNITY HEALTH ASSESSMENT 2023

Personal Health: Survey Results

PERSONAL HEALTH: HEALTH DESCRIPTION

Community Healthcare Assessment 2023		
In general, how would you best describe your health? (Choose one)	Madison Co (2023) n = 176	Indicator
Top 2 Boxes	82.95%	
Very Good	46 (26.1%)	
Good	100 (56.8%)	
Fair	28 (15.9%)	
Poor	1 (0.56%)	
Very Poor	0 (0%)	
Bottom 2 Boxes	1 (0.56%)	

PERSONAL HEALTH: SOCIAL DETERMINATES OF HEALTH

Community Health Assessment 2023			
Social Determinates of Health – questions for need:	No %	Yes %	Total %
In the last 12 months, did you ever eat less than you felt you should because there wasn't enough money for food?	158	14	Yes = 7.9%
In the last 12 months, has your utility company shut off your service for not paying your bills?	165	6	Yes = 3.4%
Are you worried that in the next 2 months, you may not have housing?	167	5	Yes = 2.8%
Do problems getting child care make it difficult for you to work or study? (leave blank if you do not have children)	146	10	Yes = 5.6%
In the last 12 months, have you needed to see a doctor, but could not because of cost?	160	11	Yes = 6.25%
In the last 12 months, have you ever had to go without health care because you didn't have a way to get there?	167	5	Yes = 2.8%
Do you ever need help reading hospital materials?	167	4	Yes = 2.3%
Are you afraid you might be hurt in your apartment building or house?	167	3	Yes = 1.7%
Have you ever missed work or lost a job due to unreliable transportation?	168	3	Yes = 1.7%
In the last 12 months, have you take less medicine than prescribed because there wasn't enough money to buy medication?	162	9	Yes = 5.1%

MADISON COUNTY COMMUNITY HEALTH ASSESSMENT 2023

PERSONAL HEALTH: OVERALL HEALTH – 2 YEAR COMPARISON

Community Healthcare Assessment 2023		
Compared to a year ago, how would you rate your overall health in general now?	Madison Co (2023) n = 176	Indicator
Much better than a year ago	25 (14.2%)	
About the same	145 (82.4%)	
Much Worse than a year ago	5 (2.8%)	

PERSONAL HEALTH: USE OF PRIMARY CARE PROVIDER

Community Healthcare Assessment 2023		
Does your household have a provider you use for Primary Care?	Madison Co (2023) n = 176	Indicator
Yes (See detail Section V)	92.6%	
No	7.4%	
<i>Totals</i>	100%	

PERSONAL HEALTH: PHYSICAL IN THE LAST 12 MONTHS

Community Healthcare Assessment 2023		
Have you had a physical in the past 12 months?	Madison Co (2023) n = 176	Indicator
Yes	80.5%	
No	19.5%	
<i>Totals</i>	100%	
If you have not had a physical, please provide the specific reason:	# of Replies	
No need/Haven't Thought About It/Feel Healthy	2	
No time/Can't schedule/Can't miss work	2	
No good recommendation	1	
New to community	1	

MADISON COUNTY COMMUNITY HEALTH ASSESSMENT 2023

PERSONAL HEALTH: HEALTH PRACTICES

Community Healthcare Assessment 2023		
Do you follow these health practices?	Madison Co (2023) n = 176	Indicator
If over 50, have you had a colonoscopy?	Yes = 68 (73.1% applicable)	
If male over 50, do you have annual prostate exams?	Yes = 26 (46.4% applicable)	
If female over 40, do you have annual mammograms?	Yes = 77 (66.9% applicable)	
If female, do you have a pap smear every other year?	Yes = 84 (61.3% applicable)	
Do you get 2.5 hours a week of moderately intense physical activity?	Yes = 112 (63.6%)	

PERSONAL HEALTH: HEALTH PRACTICES

Community Health Assessment 2023			
Please complete sentence below - "Are you..."	No %	N/A %	Yes %
Eating right (Daily, 5 servings of fruits, vegetables, wheat)	41.5%	0%	56.3%
Using tobacco products weekly	82.4%	6.8%	8.5%
Exercising 2-3 times weekly	32.4%	1.1%	63.6%
Consuming alcohol (more than 1 drink daily)	83.5%	3.8%	10.7%
Receiving an annual flu shot	28.4%	1.1%	67.6%
Been without a place to stay for multiple nights (homeless)	90.3%	5.6%	1.7%
Have difficulty with employment due to transportation, education, skills, childcare, scheduling, etc.)	86.4%	7.23%	3.4%
Vaccinated against COVID-19	28.4%	3.9%	65.3%

Primary Data (Survey) Demographics of Participants 2023

AGE

What is your age?	# of Replies	% of Total
17 and under	1	0.6%
18 to 25	5	2.9%
26 to 44	68	38.9%
44 to 64	82	46.9%
65 to 84	19	10.9%
85 and over	0	0%
Total	176	100%

MADISON COUNTY COMMUNITY HEALTH ASSESSMENT 2023

GENDER

What is your gender?	# of Replies	% of Total
Female	136	78.9%
Male	37	21.3%
Prefer not to say	1	0.6%
(blank)	6	1.2%
Total	176	100%

IDENTITY

How would you identify yourself?	# of Replies	% of Total
Indian/ Native Alaskan	0	0%
Multicultural/ Multiracial	0	0%
Asian / Pacific Islander	0	0%
Caucasian / White	171	98.3%
Latino / Hispanic	1	0.6%
(blank)	4	1.1%
Total	176	100%

HOUSEHOLD

How would you describe your household? (Please select all that apply)	# of Replies	% of Total
Married	112	65.1%
Married; Parent / Guardian with children at home	58	33.7%
Married; children no longer at home	28	16.3%
Single	12	7%
Divorced	13	7.6%
Widowed	5	2.9%
Other: Living with my soon to be spouse (fiancé)	1	0.6%
Other: Recent college graduate	1	0.6%

HEALTH CARE FACILITY

What type of healthcare facility do you use when not feeling well or sick?	# of Replies	% of Total
Clinic/Doctor's office	126	72.8%
Urgent Care/ Acute Care	36	20.8%
Don't seek medical treatment	7	4%
Emergency Department	2	1.2%
Chiropractic	1	0.6%
Self-treatment	1	0.6%

MADISON COUNTY COMMUNITY HEALTH ASSESSMENT 2023

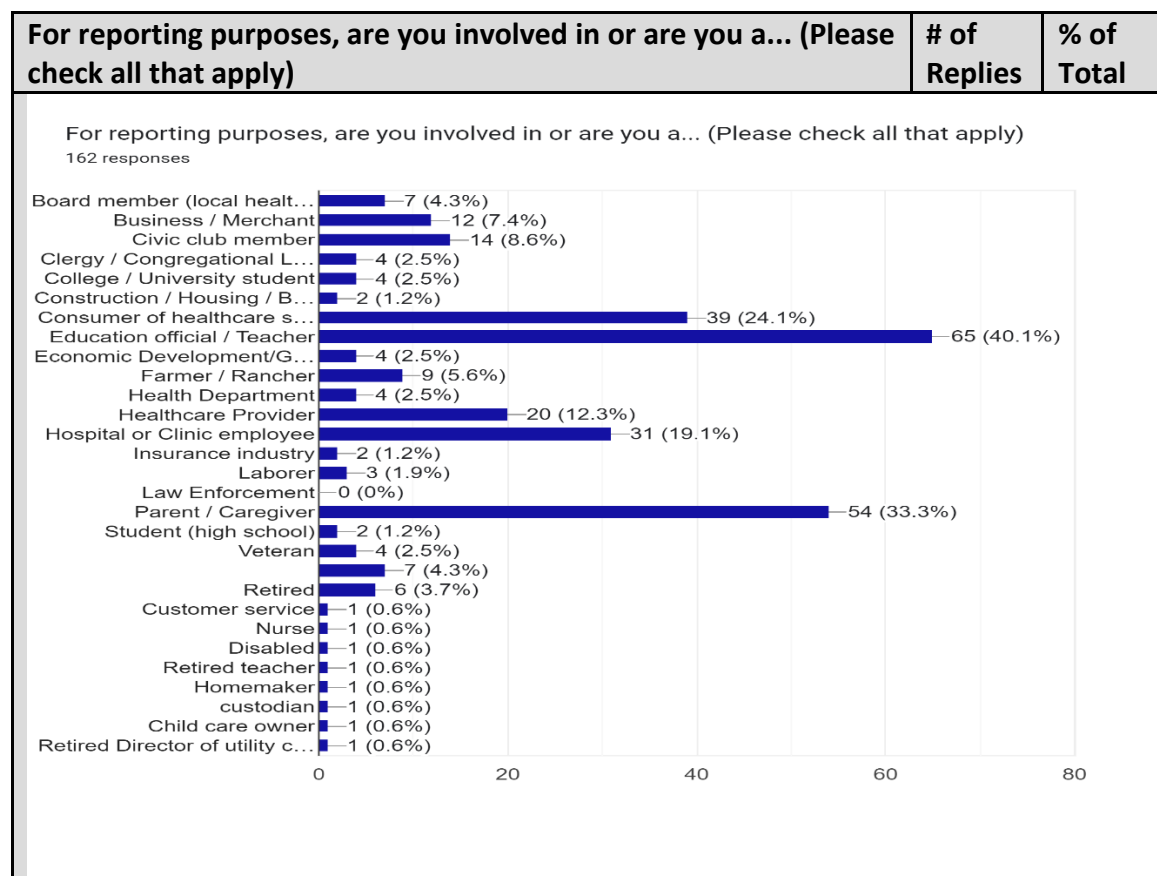
MEDICAL INFORMATION

Where do you get most of your medical information?	# of Replies	% of Total
Clinic/Doctor's office	128	74.4%
Internet	31	18%
Family	9	5.2%
Social media	3	1.7%
Friends	1	0.6%
Television/Radio/Insurance Company	0	0%

INSURANCE

What type of health insurance coverage is your primary plan?	# of Replies	% of Total
Partially covered by employer (you and employer share cost)	73	42.4%
Covered by employer (employer pays total cost)	54	31.4%
Private Insurance you purchased	17	9.9%
Medicare	21	12.2%
Medicaid	4	2.3%
No coverage (uninsured)	3	1.7%

INVOLVEMENT IN COMMUNITY



MADISON COUNTY COMMUNITY HEALTH ASSESSMENT 2023

Secondary Research Findings 2023

OVERALL STATE HEALTH RANKINGS

#	IA Rank of 99 Counties	Definitions	Madison Co (2023)	State of Iowa (2023)
1	Physical Environment (32nd)	Severe Housing Cost Burden	9%	12%
2	Health Factors (15th)	Adult Smoking Food Environment Index Sexually Transmitted Infections	16% 9.2 269.3	17% 8.6 478.5
3	Clinical Care (51st)	Uninsured Mammography Screening Flu Vaccinations	6% 45% 44%	6% 47% 57%
4	Social & Economic Factors (24th)	Children in Poverty Injury Deaths	8% 74	12% 70
5	Health Outcomes (11th)	Poor or Fair Health	10%	12%
6	Health Behaviors (13th)	Adult Obesity Physical Inactivity Alcohol-impaired Driving Death Teen Births	34% 21% 27% 11	37% 23% 27% 16
7	Quality of Life (4th)	Poor Physical Health Days Poor Mental Health Days	2.6 4.2	2.8 4.4
8	Length of Life (30th)	Life Expectancy	79.3	78.7
http://www.countyhealthrankings.org, released 2023				

DEMOGRAPHIC DETAILS: POPULATION AGE, GENDER, ETHNIC AFFILIATION (1A)

	Population Indicator	Madison Co (2023)	State of Iowa (2023)
1a	Population, Estimate (2022)	17,036	3,200,517
1a	Population, 2023	16,545	3,190,369
1a	Persons Under 5 years, Percent	5.7%	5.9%
1a	Persons Under 18 years, Percent	24.7%	23.1%
1a	Persons 65 Years and Over, Percent	17.7%	17.7%
1a	Female Persons, Percent	50.0%	49.8%
1a	White Alone, Percent	96.7%	90.1%
1a	Black or African American Alone, Percent	0.6%	4.3%
1a	Hispanic or Latino, Percent	2.5%	6.7%
1a	Foreign Born Persons, Percent	1.3%	5.5%
1a	Language Other than English Spoken at Home, Percent, Age 5+	3.8%	8.6%

MADISON COUNTY COMMUNITY HEALTH ASSESSMENT 2023

Source: US Census – Quick Facts

<https://www.census.gov/quickfacts/fact/table/Marioncountyiowa,ia/PST045218>

DEMOGRAPHIC DETAILS: POPULATION STATUS (1B)

	Population Indicator	Madison Co (2023)	State of Iowa (2023)
1b	Veterans	873	174,514
1b	Living in Same House 1 Year & Over, Percent	88.1%	86.0%
1b	Persons per Square Mile	29.5	57.1
1b	Children in Single-Parent Households, percent (County Health Rankings)	14%	21%
1b	Poverty Levels, (Iowa Health Fact Book)	7.4%	Rank 91
1b	Limited Access to Healthy Foods (County Health Rankings)	4%	6%
1b	Voter Turnout (2022), percent (Iowa Secretary of State)	61.35%	55.06%

Source: Unless stated source: US Census – Quick Facts

[U.S. Census Bureau QuickFacts: Davis County, Iowa; Iowa](#)

ECONOMIC DETAILS (2)

	Economic Indicator	Madison Co (2023)	State of Iowa (2023)
2	Per Capita Money Income in Past 12 Months (2021 dollars)	\$39,024	\$34,817
2	Housing Units	7,111	1,438,565
2	Persons per Household	2.55	2.42
2	Severe Housing Problems (County Health Rankings)	9%	12%
2	Retail Sales per Capita (Business Quick Facts)	\$6,532	\$15,925
2	Total Number of Firms (Business Quick Facts)	338	61,849
2	Unemployment (County Health Rankings)	4.5%	4.2%
2	Overall Food Insecurity Rate (Feeding America)	5.9%	7.5%
2	Child Food Insecurity Rate (Feeding America)	7.7%	9.4%
2	Mean Travel Time to Work (Minutes), Workers Age 16+	25.9	19.6
2	Long Commute - Driving Alone (County Health Rankings)	46%	21%

Source: Unless stated source: US Census – Quick Facts

<https://www.census.gov/quickfacts/fact/table/Marioncountyiowa,ia/PST045218>

MADISON COUNTY COMMUNITY HEALTH ASSESSMENT 2023

PUBLIC SCHOOLS HEALTH DELIVERY (3A AND 3B)

Currently school districts are providing on site primary health screenings and basic care.

	Education Indicator	Madison Co (2023)	State of Iowa (2023)
3a	Students Eligible for Free Lunch (%) (County Health Rankings)	29%	41%
3a	4-Year High School Graduation Rates (Quick Facts)	96.5%	92.8%
3a	Bachelor's Degree or Higher, Percent of Persons Age 25+, (Quick Facts)	24.8%	29.7%

	Education/Health Indicators	Madison Co Community School District (2019)
1	Number of Public-School Nurses	Will be provided in fall of 2023
2	School Wellness Plan in Place (Active)	
3	VISION: Number Screened / Referred to Prof / Seen by Professional	
4	HEARING: Number Screened / Referred to Prof / Seen by Professional	
5	ORAL HEALTH: Number Screened / Referred to Prof / Seen by Professional	
6	SCOLIOSIS: Screened / Referred to Prof / Seen by Professional	
7	Students Served with No Identified Chronic Health Concerns	
8	Students Served with Identified Chronic Health Concerns	
9	Tdap Vaccine Provided to Children Age 10-18	
10	School has a Suicide Prevention Program	
11	Compliance on Required Vaccinations <ul style="list-style-type: none"> ● 2-year-old benchmark (DTaP, HepB, MMR, Hib, Polio, Varicella, Pneumo.) ● Adolescent benchmark (TdapTd, HepB, MMR, Varicella, Meningo) ● Adolescent HPV benchmark 	

MADISON COUNTY COMMUNITY HEALTH ASSESSMENT 2023

ADOLESCENT & CHILDHOOD IMMUNIZATIONS – IOWA DEPARTMENT OF PUBLIC HEALTH

Childhood Vaccines
Adolescent Vaccines
Adult Vaccines

Public Health

Iowa HHS

Select County ▼

Select Year ▼

Adolescent Immunizations - Madison County - 2022

Adolescent immunization data includes the percent of 13-15 year olds that received the recommended doses of 3 Hepatitis B, 1 Meningococcal, 2 MMR, 1 Td/Tdap, and 2 Varicella vaccines. These data can be used to identify trends and patterns in immunization coverage over time and in different geographic areas. Vaccines are the best way to protect adolescents and communities from vaccine-preventable diseases.

The Iowa Immunization Program uses data from the Immunization Registry Information System (IRIS) to calculate county and state immunization rates for adolescents 13-15 years of age. This data includes patients served by both public and private health care providers with a record in IRIS that have a zip code and are an "active" patient within a health care provider organization. These data provide immunization rates based upon a standard vaccination series identified by the Advisory Committee on Immunization Practices (ACIP) and the Centers for Disease Control and Prevention (CDC).

The recommended vaccines for 13-15 year olds can be found here: <https://hhs.iowa.gov/imm/immunization/schedule>

Adolescent Immunizations for All Recommended Vaccines Series Complete (3-1-2-1-2 Series)
 Blue Line: Madison County
 Orange Line: State of Iowa

Adolescent Immunization Rates by Vaccine Series

	County	State
3-1-2-1-2 Series	84.5%	71.3%
3 Hepatitis B	95.8%	89.2%
1 Meningococcal	87.1%	77.9%
2 MMR	93.1%	84.0%
1 Td/Tdap	87.7%	79.0%
2 Varicella	91.8%	82.6%

Coverage rates calculated with IRIS denominator.

Adolescent Population Estimates for Madison County

Records in IRIS	782
-----------------	-----

Childhood vaccines | Adolescent vaccines | Adult vaccines

Public Health

Iowa HHS

Select County
Madison

Select Year
2022

2 Year old Immunizations - Madison County - 2022

Child immunization data includes the percent of children that received the recommended doses of 4 DTaP, 3 Polio, 1 MMR, 3 Hib, 3 Hepatitis B, 1 Varicella and 4 PCV vaccines by age 24 months. These data can be used to identify trends and patterns in immunization coverage over time and in different geographic areas. Vaccines are the best way to protect children and communities from vaccine-preventable diseases.

The Immunization Program uses data from the Immunization Registry Information System (IRIS) to calculate county and state immunization rates for 2-year-old children. The data includes patients served by both public and private health care providers with a record in IRIS that have a zip code and are an "active" patient within a health care provider organization. These data provide immunization rates based upon a standard vaccination series identified by the Advisory Committee on Immunization Practices (ACIP) and the Centers for Disease Control and Prevention (CDC). The Advisory Committee on Immunization Practices (ACIP) develops written recommendations for the routine administration of vaccines, along with schedules regarding the appropriate timing, dosage, and contraindications.

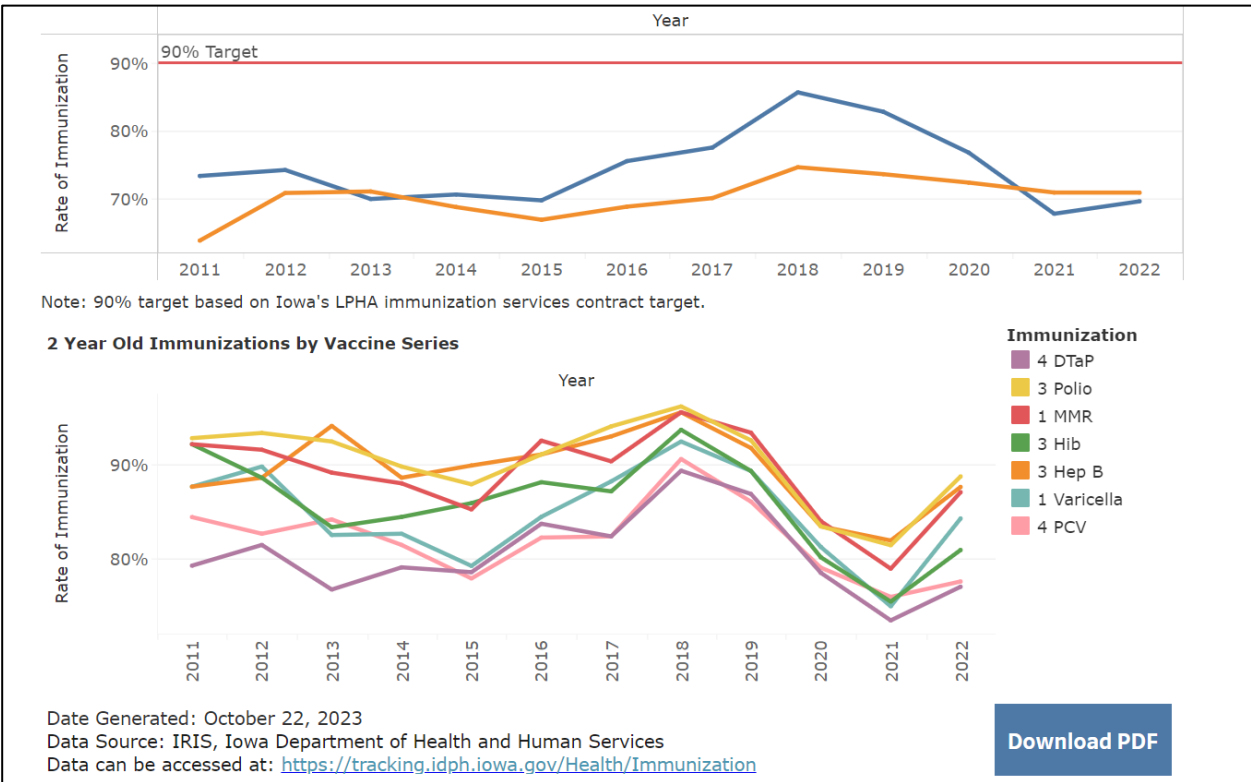
The recommended vaccines for 2 year olds can be found here:
<https://hhs.iowa.gov/immrb/immunization/schedule>

2 Year Old Immunizations for All Recommended Vaccines Series Complete (4-3-1-3-3-1-4)
 Blue Line: Madison County
 Orange Line: State of Iowa

2 Year old Immunization Rates by Vaccine Series		
	County	State
4-3-1-3-3-1-4	69.7%	70.9%
4 DTaP	77.0%	76.3%
3 Polio	88.8%	87.3%
1 MMR	87.1%	84.8%
3 Hib	80.9%	83.7%
3 Hep B	87.6%	87.9%
1 Varicella	84.3%	84.1%
4 PCV	77.5%	77.1%

Coverage rates calculated with IRIS denominator.

2 Year old Population Estimates for Madison County	
Records in IRIS	178



MADISON COUNTY COMMUNITY HEALTH ASSESSMENT 2023

MATERNAL AND INFANT HEALTH (4A AND 4B)

Tracking maternal and infant care patterns are vital in understanding the foundation of family health.

	Health Indicator	Madison Co (2023)	State of Iowa (2023)
4a	Mothers Who Began Prenatal Care in First Trimester (Iowa Health Fact Book)	318	Rank 36
4a	Annual Birth Outcome % Preterm (March of Dimes)	8.5%	9.1%
4a	Low Birth Weight (<2500 Grams) (Iowa Health Fact Book)	22	Rank 43
4a	Mothers Who Smoked During Pregnancy (Iowa Health Fact Book)	25	Rank 67
4a	Mothers under Age 20 (Iowa Health Fact Book)	9	Rank 54
4a	Out-of-Wedlock Births (Iowa Health Fact Book)	78	Rank 67

LIVE BIRTHS (4B)

	Vital Statistics	Madison Co (2023)	State of Iowa
4b	Total Live Births, 2022	198	36,446
4b	Total Live Births, 2021	184	36,786
4b	Total Live Births, 2020	176	36,058
4b	Total Live Births, 2019	179	37,597
4b	Total Live Births, 2018	172	37,709
4b	Total Live Births, 2017	146	38,408
4b	Total Live Births, 2016	171	39,223
4b	Total Live Births, 2015	184	38,408
4b	Total Live Births, 2014	143	37,709
4b	Total Live Births, 2013	166	37,597
4b	Total Live Births, 2012	150	36,058

Source: Iowa Department of Public Health, Vital Statistics

MADISON COUNTY COMMUNITY HEALTH ASSESSMENT 2023

HOSPITAL SPECIFIC DETAILS (5)

Understanding provider access and disease patterns are fundamental in healthcare delivery.

	Health Indicator	Madison Co (2023)	State of Iowa (2023)
5	Primary Care Physicians per 1 (County Health Rankings)	1,840:1	1,360:1
5	Preventable Hospital Stays (County Health Rankings)	1,823	2,400
5	Patients Who Gave Their Hospital a Rating of 9 or 10 on a Scale from 0 (Lowest) to 10 (Highest) (CMS Hospital Compare)	N/A	77%
5	Patients Who Reported Yes, They Would Definitely Recommend the Hospital (CMS Hospital Compare)	N/A	75%
5	Average Time Patients Spent in the Emer. Department Before They Were Seen by a Healthcare Professional, minutes (CMS Hospital Compare)	N/A	115
5	Medicare Hospital Spending per Patient (Medicare Spending per Beneficiary) (CMS Hospital Compare)	\$18,953	N/A
5	Unplanned Readmission Rate (new 2018) (CMS Hospital Compare)	N/A	15% (national)

BEHAVIORAL AND MENTAL HEALTH PROFILE (6)

	Health Indicator	Madison Co (2023)	State of Iowa (2023)
6	Alcohol-Impaired Driving Deaths, (3 of 6 Total Driving Deaths) (County Health Rankings)	27%	27%
6	Poor Mental Health Days (County Health Rankings)	4.2	4.4

HEALTH BEHAVIORS PROFILE (7)

Knowing community health risk factors and disease patterns can aid in the understanding of next steps to improve health.

	Health Indicator	Madison Co (2023)	State of Iowa (2023)
7	Adult Obesity	34%	37%
7	Adult Smoking	16%	17%
7	Excessive Drinking	26%	25%
7	Physical Inactivity	21%	23%
7	Poor Physical Health Days	2.6	2.8

MADISON COUNTY COMMUNITY HEALTH ASSESSMENT 2023

7	Sexually Transmitted Infections (per 100,000 residents)	269.3	478.5
---	---	-------	-------

Source: County Health Ranking (7)

MORTALITY PROFILES (8)

The leading causes of county deaths are listed below.

	Health Indicator	Madison Co (2023)	State of Iowa (2023)
8	Life Expectancy Females (Institute for Health Metrics and Evaluation)	81.8	81.9
8	Life Expectancy Males (Institute for Health Metrics and Evaluation)	76.7	77.5
8	Infant Deaths (Iowa Health Fact Book)	*	*

CAUSE OF DEATH (8B)

#	Causes of Death by County of Residence	Madison Co (2023)	State of Iowa Rank (2023)
	All Causes	764	64
1	Heart Disease	149	76
2	All Cancer	173	55
3	Lung Cancer	34	70
4	Chronic Obstructive Pulmonary Disease	41	70
5	Stroke	38	60
6	Alzheimer's Disease	56	34
7	Accidents and Adverse Effects	47	39
8	Pneumonia/Influenza	17	57
9	Diabetes Mellitus	38	33
10	Suicide	12	51
11	Falls	11	62
12	Firearms	8	44
13	All Transportation	13	46
14	Motor Vehicle Traffic	12	40

Source: Iowa Health Fact Book

PREVENTATIVE HEALTH (COUNTY HEALTH RANKINGS) (9)

	Health Indicator	Madison Co (2023)	State of Iowa (2023)
9	Access to Exercise Opportunities	46%	79%
9	2-Year-Old Coverage of Individual Vaccines and Selected Vaccination Series, (Iowa Immunization Program)	67%	70%
9	Diabetic Prevalence	8%	9%

MADISON COUNTY COMMUNITY HEALTH ASSESSMENT 2023

9	Mammography Screening	45%	47%
9	Limited Access to Healthy Food	4%	6%

UNINSURED PROFILES (SOURCE: IOWA HEALTH FACT BOOK) (10)

	Health Indicator	Madison Co (2023)	State of Iowa Rank (2023)
10	Uninsured (Under 65), 2023	5.9%	45

Inventory of Community (Service Area) Health Partners

Other providers can be found at <https://www.madisonhealth.com/our-doctors-physicians/>

Family Medicine

Health Trust Physicians Clinic

300 W Hutchings St, Winterset, IA 50273
515-462-2950

Elkin, Jennifer J., DO
Kimball, Joseph M., DO
Suddarth, Jonathan, DO
Blanchard, Clarice, PA-C
Elgin, Molly, ARNP
Gonnerman, Ann, ARNP
Johnson, Emma, PA-C

300 W Hutchings St, Winterset, IA 50273
515-462-2373

Grossmann, Paul, MD

Cardiology

Health Trust Physicians Clinic

300 W Hutchings St, Winterset, IA 50273
515-235-5000

Fraizer, Michael, MD
McCormick, Matthew, MD

Chiropractic

Chiropractic 1st - Winterset

105 E Madison St, Winterset, IA 50273
515-462-4644

Infinite Chiropractic & Wellness Clinic

1217 N 6th Ave #4, Winterset, IA 50273
515-462-6787

Lowe Chiropractic Clinic

59 E Green St, Winterset, IA 50273
515-462-5807

Flourish Chiropractic & Wellness

108 W Court Ave, Winterset, IA 50273
515-384-0360

Dentists

Blanchard Family Dentistry

820 W Summit St, Winterset, IA 50273
515-462-4474

Earlham Medical Clinic

125 W 1st St, Earlham, IA 50072
515-758-2907

Harris, Eve, PA-C

Walk-In Clinic

300 W Hutchings St, Winterset, IA 50273
515-462-2950

Piotrowski, Jamie, NP-C

Emergency Dept./Hospitalist

Madison County Memorial Hospital

300 W Hutchings St, Winterset, IA 50273
515-462-2373

Ha, Heidi, ARNP
Hawthorne, Virginia, ARNP
Swan, Jeff, PA-C

General Surgery

Madison County Memorial Hospital

Winterset Dental

301 Wambold Dr, Winterset, IA 50273
515-462-5755

Summit Dental PLC

124 W Summit St, Winterset, IA 50273
515-462-2212

Oswald Gwen G DDS

Dermatology

Specialty Clinic

300 W Hutchings St, Winterset, IA 50273
515-221-8960

Broshuis, Katie, ARNP

ENT

Specialty Clinic

300 W Hutchings St, Winterset, IA 50273
515-223-4368

Wright, Simon, MD

Home Care Agencies

Connect Home Care

1217 N 6th Ave UNIT 3, Winterset, IA 50273
515-462-0288

EveryStep Hospice

901 S 4th Ave, Winterset, IA 50273
515-462-5205

Nursing Home/Assisted Living

Winterset Care Center North

411 E Lane St, Winterset, IA 50273
515-462-1571

Azria Health Winterset

1015 W Summit St, Winterset, IA 50273
515-462-1711

Madison Square Assisted Living

209 W Jefferson St, Winterset, IA 50273
515-462-5087

Madison County Elderly Services, Inc

1006 N John Wayne Dr, Winterset, IA 50273

Oncology

Health Trust Physicians Clinic

300 W Hutchings St, Winterset, IA 50273
515-462-2950

ElHaddad, Abdelaziz, MD

Optometry

Family Eyecare of Winterset

102 N 1st Ave, Winterset, IA 50273
515-462-1254

Orthopaedics

Health Trust Physicians Clinic

300 W Hutchings St, Winterset, IA 50273
515-462-2950

Formanek, Teri S., MD

Pediatrics

Health Trust Physicians Clinic

300 W Hutchings St, Winterset, IA 50273
515-462-2950

Kimball, Amy N., DO

Podiatry

Health Trust Physicians Clinic

300 W Hutchings St, Winterset, IA 50273
515-462-2950

Zelinskas, Sara, DPM, ABFAS

Neustrom, Kirk, DPM.

Specialist

Specialty Clinic

300 W Hutchings St, Winterset, IA 50273
515-282-8270

Duffy, Jill, ARNP (Pain Management)

Ogden, Jessica, ARNP (Rheumatology)

Rosenberg, Steven, MD, FACS

(Urology)

Community (Service Area) Resources – Inventory of Services

Inventory of Health Services – Madison County, Iowa

Inventory of Health Services – Service area, Public Health Department, and Primary Service Area (Madison County, IA)				
Cat	Healthcare Services Offered in County: Yes / No	MCHS	Health Dept	County
Clinic	Primary Care	Yes	No	Yes
Hosp	Alzheimer Center	No	No	Yes
Hosp	Ambulatory Surgery Centers	Yes	No	Yes
Hosp	Arthritis Treatment Center	Yes	No	No
Hosp	Bariatric/Weight Control Services	No	Yes	No
Hosp	Birthing/LDR/LDRP Room/ Obstetrics	Yes	No	Yes
Hosp	Breast Cancer	Yes	No	Yes
Hosp	Burn Care	No	No	No
Hosp	Cardiac Rehabilitation	Yes	No	Yes
Hosp	Cardiac Surgery	No	No	No
Hosp	Cardiology Services	Yes	No	Yes
Hosp	Case Management	Yes	Yes	Yes
Hosp	Chaplaincy/Pastoral Care Services	Yes	No	Yes
Hosp	Chemotherapy	Yes	No	Yes
Hosp	Colonoscopy	Yes	No	Yes
Hosp	Crisis Prevention	No	Yes	Yes
Hosp	CT Scanner	Yes	No	Yes
Hosp	Diagnostic Radioisotope Facility	Yes	No	No
Hosp	Diagnostic/Invasive Catheterization	No	No	No
Hosp	Enrollment Assistance Services	Yes	No	Yes
Hosp	Full Field Digital Mammography (FFDM)	Yes	No	Yes
Hosp	Genetic Testing/Counseling	No	No	No
Hosp	Geriatric Services	Yes	Yes	Yes
Hosp	Hemodialysis	No	No	Yes
Hosp	HIV/AIDS Services	No	No	No
Hosp	Image-Guided Radiation Therapy (IGRT)	No	No	No
Hosp	Inpatient Acute Care - Hospital Services	Yes	No	Yes
Hosp	Intensity-Modulated Radiation Therapy (IMRT) 161	No	No	No
Hosp	Intensive Care Unit	No	No	No
Hosp	Intermediate Care Unit	Yes	No	Yes
Hosp	Interventional Cardiac Catheterization	No	No	No
Hosp	Isolation room	Yes	No	Yes
Hosp	Kidney surgery	No	No	No
Hosp	Liver surgery	No	No	No
Hosp	Lung surgery	No	No	No
Hosp	Magnetic Resonance Imaging (MRI)	Yes	No	Yes
Hosp	Mobile Health Services	No	No	Yes

Inventory of Health Services – Service area, Public Health Department, and Primary Service Area (Madison County, IA)				
Cat	Healthcare Services Offered in County: Yes / No	MCHS	Health Dept	County
Hosp	Multi-slice Spiral Computed Tomogr. (<64 slice CT)	Yes	No	Yes
Hosp	Multi-slice Spiral Computed Tomogr. (<64+ slice CT)	No	No	No
Hosp	Neonatal Services	No	No	No
Hosp	Neurological Services	No	No	No
Hosp	Occupational Health Services	Yes	No	Yes
Hosp	Oncology Services	Yes	No	Yes
Hosp	Orthopedic Services	Yes	No	Yes
Hosp	Outpatient Surgery	Yes	No	Yes
Hosp	Pain Management	Yes	No	No
Hosp	Palliative Care Program	Yes	No	No
Hosp	Pediatric	Yes	No	Yes
Hosp	Physical Rehabilitation	Yes	No	Yes
Hosp	Positron Emission Tomography/CT (PET) (PET/CT)	No	No	Yes
Hosp	Psychiatric Services	Yes	No	Yes
Hosp	Radiology, Diagnostic & Therapeutic	Yes	No	Yes
Hosp	Reproductive Health	Yes	No	No
Hosp	Robotic Surgery	No	No	Yes
Hosp	Sleep Center	No	No	Yes
Hosp	Social Work Services	Yes	Yes	Yes
Hosp	Sports Medicine	Yes	No	Yes
Hosp	Swing Bed Services	Yes	No	Yes
Hosp	Transplant Services	No	No	No
Hosp	Trauma Center-Level IV	Yes	No	Yes
Hosp	Ultrasound	Yes	No	Yes
Hosp	Women's Health Services	Yes	Yes	Yes
Hosp	Wound Care	Yes	No	Yes
SR	Adult Day Care Program	No	No	No
SR	Assisted Living	No	No	Yes
SR	Home Health Services	No	Yes	Yes
SR	Hospice	Yes	No	Yes
SR	Long-Term Care and Nursing Home Services	No	No	Yes
SR	Retirement Housing	No	No	Yes
SR	Skilled Nursing Care	Yes	No	Yes
ER	Emergency Services	Yes	No	Yes
ER	Urgent Care Center	Yes	No	No
ER	Ambulance Services	No	No	Yes
SERV	Alcoholism-Drug Abuse	No	No	Yes
SERV	Blood Donor Center	No	No	No
SERV	Chiropractic Services	No	No	Yes
SERV	Complementary Medicine Services	No	Yes	No

Inventory of Health Services – Service area, Public Health Department, and Primary Service Area (Madison County, IA)				
Cat	Healthcare Services Offered in County: Yes / No	MCHS	Health Dept	County
SERV	Dental Services	No	Yes	Yes
SERV	Fitness Center	No	No	Yes
SERV	Health Education Classes/Health Fairs/ Support Groups	Yes	Yes	Yes
SERV	Health Information Center	Yes	Yes	Yes
SERV	Health Screenings	Yes	Yes	Yes
SERV	Meals on Wheels	No	Yes	Yes
SERV	Nutrition Programs	Yes	Yes	Yes
SERV	Patient Education Center	Yes	No	No
SERV	Teen Outreach Services	No	No	Yes
SERV	Tobacco Treatment/Cessation Program	No	By Referral	Yes
SERV	Transportation to Health Facilities	No	No	Yes
SERV	Wellness Program	Yes	Yes	Yes

Providers Delivering Care – Madison County, Iowa

CARE DELIVERY

Care Providers			
# of FTE Providers working in Primary Service Area (PSA)	FTE Physicians		FTE Allied Staff
	PSA Based DRs	Visiting DRs Commun.	PSA Based PA / NP
Primary Care:			
Family Practice	4	0	5
Internal Medicine/Geriatrician	0	0	0
Obstetrics/Gynecology	0	0	0
Pediatrics	1	0	0
Medicine Specialists/ Visiting Specialist:			
Allergy/Immunology	0	0	0
Audiology	0	0	0
Cardiology	0	2	0
Dermatology	0	0	1
Endocrinology	0	0	0
ENT (Ear/Nose/Throat)	0	1	2
Gastroenterology	0	0	0
Oncology/Radiology	0	1	0
Orthopedics /Surgery	2	0	0
Orthotics/Prosthetics	0	0	0

Care Providers			
	FTE Physicians		FTE Allied Staff
# of FTE Providers working in Primary Service Area (PSA)	PSA Based DRs	Visiting DRs Commun.	PSA Based PA / NP
Infectious Diseases	0	0	0
Neonatal/Perinatal	0	0	0
Nephrology	0	0	0
Neurology	0	0	0
Occupational Medicine	0	0	0
Physical Medicine/Rehab	0	0	0
Podiatry	1	1	0
Psychiatry	0	0	0
Pulmonary	0	0	0
Rheumatology	0	0	1
Surgery Specialists:			
General Surgery/Colon/Oral	1	0	0
Neurosurgery	0	0	0
Ophthalmology/Optometry	0	0	0
Otolaryngology (ENT)	0	1	0
Plastic/Reconstructive	0	0	0
Thoracic/Cardiovascular/Vascular	0	0	0
Urology	0	1	0
Women’s Health	0	0	0
Vascular Surgery	0	0	0
Hospital Based:			
Anesthesia/Pain	0	1	1
Electromyography	0	0	0
Emergency	0	0	5
Radiology	0	0	0
Pathology	0	1	0
Hospitalist	0	0	5
Non-Hospital Based (Community):			
Chiropractor	0	4	0
Optometrist	0	1	0
Dentist	0	3	0

Service Directory

EMERGENCY NUMBERS

Police/ Sheriff	911
Fire	911
Ambulance	911

NON-EMERGENCY /MUNICIPAL NUMBERS (MADISON COUNTY, IOWA)

Madison County Sheriff (Police)	515-462-3575
Winterset EMS	515-462-2253
Winterset Fire	515-250-8258
Winterset Police	515-462-1423

QUICK REFERENCE PHONE GUIDE

Action Now	1-800-622-5168
Al-Anon “Free to Be Me”	(515) 462-4253
Alcoholics Anonymous	(515) 282-8550
Alzheimer’s Disease Helpline	1-800-272-3900
American Cancer Society	1-800-227-2345
American Red Cross	1-800-887-2988
Arthritis Foundation	1-866-378-0636
Battered Women	1-800-433-SAFE
Child Abuse Hotline	1-800-795-9606
Dependent Adult Abuse Hotline	1-800-362-2178
Dependent Adult and Child Abuse	1-800-652-9516
Domestic Abuse Hotline	1-800-942-0333
First Call for Help	(515) 246-6555
Foundation Through Crisis	1-800-332-4224
Gambling Hotline	1-800-238-7633
Iowa Arson/Crime Hotline	1-800-532-1459
Iowa Child Abuse Reporting Hotline	1-800-362-2178
Iowa State Patrol Emergency	1-800-525-5555
Medicare	1-800-MEDICARE
Mental Health Information and Referral	1-800-562-4944
National Alcohol Hotline	1-800-252-6465
National Center for Missing and Exploited Children	1-800-THE LOST
National Institute on Drugs	1-800-662-4537
Poison Control	1-800-222-1222
Senior Health Insurance Info Program (SHIIP)	1-800-351-4664

Substance Abuse Information & Treatment	1-800-662-HELP
Suicide Prevention Hotline	1-800-SUICIDE
Teen Line (Red Cross)	1-800-443-8336

GENERAL ONLINE HEALTH RESOURCES

Doctors and Dentists—General

[AMA Physician Select: Online Doctor Finder](#) (American Medical Association) [DocFinder](#) (Administrators in Medicine) [Find a Dentist](#) (Academy of General Dentistry) [Find a Dentist: ADA Member Directory](#) (American Dental Association) [Physician Compare](#) (Centers for Medicare & Medicaid Services)

Hospitals and Clinics—General

[Find a Health Center](#) (Health Resources and Services Administration) [Find a Provider: TRICARE Provider Directories](#) (TRICARE Management Activity) [Hospital Quality Compare](#) (Centers for Medicare & Medicaid Services)

Doctors and Dentists—Specialists

[ACOG's Physician Directory](#) (American College of Obstetricians and Gynecologists) [ACR: Geographic Membership Directory](#) (American College of Rheumatology) [American College of Surgeons Membership Directory](#) (American College of Surgeons) [American Osteopathic Association D.O. Database](#) (American Osteopathic Association) [ASGE: Find a Doctor](#) (American Society for Gastrointestinal Endoscopy) [Cancer Genetics Services Directory](#) (National Cancer Institute) [Child and Adolescent Psychiatrist Finder](#) (American Academy of Child and Adolescent Psychiatry) [Dystonia: Find a Health Care Professional](#) (Dystonia Medical Research Foundation) [Expert Locator: Immunologists](#) (Jeffrey Modell Foundation) [Find a Dermatologic Surgeon](#) (American Society for Dermatologic Surgery) [Find a Dermatologist](#) (American Academy of Dermatology) [Find a Gastroenterologist](#) (American College of Gastroenterology) [Find a Gynecologic Oncologist](#) (Society of Gynecologic Oncologists) [Find a Hand Surgeon](#) (American Society for Surgery of the Hand) [Find a Hematologist](#) (American Society of Hematology) [Find a Neurologist](#) (American Academy of Neurology) [Find a Pediatric Dentist](#) (American Academy of Pediatric Dentistry) [Find a Pediatrician or Pediatric Specialist](#) (American Academy of Pediatrics) [Find a Periodontist](#) (American Academy of Periodontology) [Find a Physical Medicine & Rehabilitation Physician](#) (American Academy of Physical Medicine and Rehabilitation) [Find a Plastic Surgeon](#) (American Society of Plastic Surgeons) [Find a Podiatrist](#) (American Podiatric Medical Association) [Find a Thyroid Specialist](#) (American Thyroid Association) [Find a Urologist](#) (American Urological Association) [Find an ACFAS Physician](#) (American College of Foot and Ankle Surgeons) [Find an Allergist/Immunologist: Search](#) (American Academy of Allergy, Asthma, and Immunology) [Find an Endocrinologist](#) (Hormone Health Network) [Find an Eye M.D.](#) (American

Academy of Ophthalmology) [Find an Interventional Radiologist](#) (Society of Interventional Radiology) [Find an Oncologist](#) (American Society of Clinical Oncology) [Find an Oral and Maxillofacial Surgeon](#) (American Association of Oral and Maxillofacial Surgeons) [Find an Orthopedic Foot and Ankle MD](#) (American Orthopedic Foot and Ankle Society) [Find an Otolaryngologist \(ENT\)](#) (American Academy of Otolaryngology--Head and Neck Surgery) [Finding an Eye Care Professional](#) (National Eye Institute) [GI Locator Service](#) (American Gastroenterological Association)

Other Healthcare Providers

[AMTA's Find a Massage Therapist](#) (American Massage Therapy Association) [Cancer Genetics Services Directory](#) (National Cancer Institute) [Find a Diabetes Educator](#) (American Association of Diabetes Educators) [Find a Genetic Counselor](#) (National Society of Genetic Counselors) [Find a Midwife](#) (American College of Nurse-Midwives) [Find a Nurse Practitioner](#) (American Academy of Nurse Practitioners) [Find a Physical Therapist](#) (American Physical Therapy Association) [Find a Professional: Online Directory of Audiology and Speech-Language Pathology Programs](#) (American Speech-Language-Hearing Association) [Find a Registered Dietitian](#) (Academy of Nutrition and Dietetics) [Find a Therapist](#) (Anxiety Disorders Association of America) [Find an Audiologist](#) (American Academy of Audiology) [Manual Lymphatic Drainage Therapists](#) (National Lymphedema Network) [National Register of Health Service Providers in Psychology](#) (National Register of Health Service Providers in Psychology) [NCCAOM: Find Nationally Certified Practitioners](#) (National Certification Commission for Acupuncture and Oriental Medicine) [Search for an Emergency Contraception Provider in the United States](#) (Princeton University, Office of Population Research)

Hospitals and Clinics—Specialized

[Accredited Birth Centers](#) (Commission for the Accreditation of Birth Centers) [Alzheimer's Disease Research Centers](#) (National Institute on Aging) [Cystic Fibrosis Foundation: Find a Chapter](#) (Cystic Fibrosis Foundation) [Cystic Fibrosis Foundation: Find an Accredited Care Center](#) (Cystic Fibrosis Foundation) [Dialysis Facility Compare](#) (Centers for Medicare & Medicaid Services) [FDA Certified Mammography Facilities](#) (Food and Drug Administration) [Find a Free Clinic](#) (National Association of Free Clinics) [Find an Indian Health Service Facility](#) (Indian Health Service) [Find Treatment Centers](#) (American Cancer Society) [Genetics Clinic Directory Search](#) (University of Washington) [Locate a Sleep Center in the United States by Zip Code](#) (American Academy of Sleep Medicine) [MDA ALS Centers](#) (Muscular Dystrophy Association) [Mental Health Services Locator](#) (Substance Abuse and Mental Health Services Administration) [NCI Designated Cancer Centers](#) (National Cancer Institute) [Neurofibromatosis Specialists](#) (Children's Tumor Foundation) [Post-Polio Directory 2011: Post-Polio Clinics, Health Professionals, Support Groups](#) (Post-Polio Health International including International Ventilator Users Network) [Spina Bifida Clinic Directory](#) (Spina Bifida Association of America) [Substance Abuse Treatment Facility](#)

MADISON COUNTY COMMUNITY HEALTH ASSESSMENT 2023

[Locator](#) (Substance Abuse and Mental Health Services Administration) [Transplant Center Search Form](#) (BMT InfoNet) [U.S. NMDP Transplant Centers](#) (National Marrow Donor Program) [VA Health Care Facilities Locator & Directory](#) (Veterans Health Administration) [Where to Donate Blood](#) (AABB) [Where to Donate Cord Blood](#) (National Marrow Donor Program)

Other Healthcare Facilities and Services

[Alzheimer's Disease Resource Locator](#) (Fisher Center for Alzheimer's Research Foundation) [American College of Radiology Accredited Facility Search](#) (American College of Radiology) [APA District Branch / State Association Directory](#) (American Psychiatric Association) [Directory of Organizations \(Deafness and Communication Disorders\)](#) (National Institute on Deafness and Other Communication Disorders) [Dog Guide Schools in the United States](#) (American Foundation for the Blind) [Eldercare Locator](#) (Dept. of Health and Human Services) [Find a Hospice or Palliative Care Program](#) (National Hospice and Palliative Care Organization) [Find Services \(for People with Vision Loss\)](#) (American Foundation for the Blind) [Find Urgent Care Centers by State](#) (Urgent Care Association of America) [Genetic Testing Laboratory Directory](#) (University of Washington) [Home Health Compare](#) (Centers for Medicare & Medicaid Services) [Medicare: Helpful Contacts](#) (Centers for Medicare & Medicaid Services) [Muscular Dystrophy Association Clinics and Services](#) (Muscular Dystrophy Association) [National Foster Care and Adoption Directory Search](#) (Children's Bureau) [Nursing Home Compare](#) (Centers for Medicare & Medicaid Services) [Organizations That Offer Support Services](#) (National Cancer Institute) [Poison Control Centers](#) (American Association of Poison Control Centers) [Resources and Information for Parents about Braille](#) (American Foundation for the Blind) [State-Based Physical Activity Program Directory](#) (Centers for Disease Control and Prevention) [TSA Chapters in the USA](#) (Tourette Syndrome Association) [Violence against Women: Resources by State](#) (Dept. of Health and Human Services, Office on Women's Health) [Where to Find Hair Loss Accessories and Breast Cancer Products](#) (American Cancer Society)

SOURCE: MedlinePlus provides links to directories to help you find libraries, health professionals, services, and facilities. NLM does not endorse or recommend the organizations that produce these directories, nor the individuals or organizations that are included in the directories.

MADISON COUNTY COMMUNITY HEALTH ASSESSMENT 2023

DATA DETAILS

Plan Tactics for Madison County, Iowa – 2017 to 2023

Please contact Madison County Public Health Department for the prior term action plans.

CHA Survey Detailed Survey, Findings (Primary Research)

7/23/2020 HEALTHCARE PERCEPTIONS & SATISFACTION for PELLA REGIONAL HEALTH CENTER and MARION COUNTY, IOWA

HEALTHCARE PERCEPTIONS & SATISFACTION for PELLA REGIONAL HEALTH CENTER and MARION COUNTY, IOWA

The leadership of Pella Regional Health Center and Marion County Public Health invite you to help improve the care and services of our community. Please help by answering these few short questions. Please answer honestly and your responses will be kept confidential.

We understand that there has been an unusual time, potential distribution in services, and impact to the health system due to COVID-19. We know that there will be a different normal due to the Pandemic; however, we are attempting to assess services before the occurrence of COVID to address moving forward. The leadership would like you to answer the following questions without considering the impact that COVID had on services. Thank you again for your participation.

* Required

1. In general, how would you rate the overall quality of the healthcare delivered to your community? *

Mark only one oval per row.

	Very Good	Good	Fair	Poor	Very Poor
Overall quality of care	<input type="radio"/>	<input type="radio"/>	<input type="radio"/>	<input type="radio"/>	<input type="radio"/>

2. How would you rate the following healthcare services? (Please select one box for each row)

Mark only one oval per row.

	Very Good	Good	Fair	Poor	Very Poor	Not Applicable (NA)
Pediatric (child) care	<input type="radio"/>	<input type="radio"/>	<input type="radio"/>	<input type="radio"/>	<input type="radio"/>	<input type="radio"/>
Chiropractor	<input type="radio"/>	<input type="radio"/>	<input type="radio"/>	<input type="radio"/>	<input type="radio"/>	<input type="radio"/>
Dentist(s)	<input type="radio"/>	<input type="radio"/>	<input type="radio"/>	<input type="radio"/>	<input type="radio"/>	<input type="radio"/>
Eye Doctor / Optometrist	<input type="radio"/>	<input type="radio"/>	<input type="radio"/>	<input type="radio"/>	<input type="radio"/>	<input type="radio"/>
Family Planning Services	<input type="radio"/>	<input type="radio"/>	<input type="radio"/>	<input type="radio"/>	<input type="radio"/>	<input type="radio"/>
Family Practice (Medical) Services	<input type="radio"/>	<input type="radio"/>	<input type="radio"/>	<input type="radio"/>	<input type="radio"/>	<input type="radio"/>
Home Care Agencies / Home Health	<input type="radio"/>	<input type="radio"/>	<input type="radio"/>	<input type="radio"/>	<input type="radio"/>	<input type="radio"/>
Hospice	<input type="radio"/>	<input type="radio"/>	<input type="radio"/>	<input type="radio"/>	<input type="radio"/>	<input type="radio"/>
Hospital Services	<input type="radio"/>	<input type="radio"/>	<input type="radio"/>	<input type="radio"/>	<input type="radio"/>	<input type="radio"/>
Nursing Home	<input type="radio"/>	<input type="radio"/>	<input type="radio"/>	<input type="radio"/>	<input type="radio"/>	<input type="radio"/>
Pharmacy	<input type="radio"/>	<input type="radio"/>	<input type="radio"/>	<input type="radio"/>	<input type="radio"/>	<input type="radio"/>
Public Health	<input type="radio"/>	<input type="radio"/>	<input type="radio"/>	<input type="radio"/>	<input type="radio"/>	<input type="radio"/>
School Nurse	<input type="radio"/>	<input type="radio"/>	<input type="radio"/>	<input type="radio"/>	<input type="radio"/>	<input type="radio"/>
Teen health (drinking, abuse, safety, pregnancy)	<input type="radio"/>	<input type="radio"/>	<input type="radio"/>	<input type="radio"/>	<input type="radio"/>	<input type="radio"/>
Child (day) care services	<input type="radio"/>	<input type="radio"/>	<input type="radio"/>	<input type="radio"/>	<input type="radio"/>	<input type="radio"/>

3. In your opinion, how much of a problem are the following causes of poor health in your community? (please select one box for each row)

Mark only one oval per row.

	Not a problem	Somewhat of a problem	Major problem	Don't know
Cancer	<input type="radio"/>	<input type="radio"/>	<input type="radio"/>	<input type="radio"/>
Diabetes	<input type="radio"/>	<input type="radio"/>	<input type="radio"/>	<input type="radio"/>
Drug Abuse	<input type="radio"/>	<input type="radio"/>	<input type="radio"/>	<input type="radio"/>
Substance Abuse	<input type="radio"/>	<input type="radio"/>	<input type="radio"/>	<input type="radio"/>
Heart Disease	<input type="radio"/>	<input type="radio"/>	<input type="radio"/>	<input type="radio"/>
Mental illness	<input type="radio"/>	<input type="radio"/>	<input type="radio"/>	<input type="radio"/>
Obesity	<input type="radio"/>	<input type="radio"/>	<input type="radio"/>	<input type="radio"/>
Pneumonia / Flu	<input type="radio"/>	<input type="radio"/>	<input type="radio"/>	<input type="radio"/>
Respiratory Disease	<input type="radio"/>	<input type="radio"/>	<input type="radio"/>	<input type="radio"/>
Sexually Transmitted Diseases	<input type="radio"/>	<input type="radio"/>	<input type="radio"/>	<input type="radio"/>
Stroke	<input type="radio"/>	<input type="radio"/>	<input type="radio"/>	<input type="radio"/>
Suicide	<input type="radio"/>	<input type="radio"/>	<input type="radio"/>	<input type="radio"/>
Trauma	<input type="radio"/>	<input type="radio"/>	<input type="radio"/>	<input type="radio"/>

<https://docs.google.com/forms/d/1UBgRjXqhtF8IDA9GoE5e1rmSuyEjzkbkTAhZIOVBZ-8/edit>

1/8

MADISON COUNTY COMMUNITY HEALTH ASSESSMENT 2023

7/23/2020

HEALTHCARE PERCEPTIONS & SATISFACTION for PELLA REGIONAL HEALTH CENTER and MARION COUNTY, IOWA

4. Other health problems in your community not listed above?

5. In your opinion, what areas need additional education or attention in our community? (Please select all that apply)

Check all that apply.

- Abuse / Violence
 - Aging (Dementia)
 - Alcohol
 - Alternative Medicine
 - Child (day) care
 - Chronic Diseases (example Diabetes or Heart Failure)
 - Drugs/Illegal substances
 - Family Planning / Birth Control
 - Lead Exposure
 - Mental illness
 - Neglect
 - Nutrition
 - Obesity
 - Pain Management
 - Pediatric (child) care
 - Poverty
 - Preventative Health
 - Sexually Transmitted Diseases
 - Suicide
 - Teen Health (drinking, abuse, safety, pregnancy)
 - Tobacco Use
 - Uninsured / Underinsured
 - Vaccinations
 - Wellness Education
- Other: _____

6. How would you rate each of the following in your community?

Mark only one oval per row.

	Very Good	Good	Fair	Poor	Very Poor	Not aware of the services
Caregiver training programs/support groups	<input type="radio"/>	<input type="radio"/>	<input type="radio"/>	<input type="radio"/>	<input type="radio"/>	<input type="radio"/>
Early childhood development programs	<input type="radio"/>	<input type="radio"/>	<input type="radio"/>	<input type="radio"/>	<input type="radio"/>	<input type="radio"/>
Prevention of falls	<input type="radio"/>	<input type="radio"/>	<input type="radio"/>	<input type="radio"/>	<input type="radio"/>	<input type="radio"/>
Obesity prevention and treatment	<input type="radio"/>	<input type="radio"/>	<input type="radio"/>	<input type="radio"/>	<input type="radio"/>	<input type="radio"/>
Spiritual health support	<input type="radio"/>	<input type="radio"/>	<input type="radio"/>	<input type="radio"/>	<input type="radio"/>	<input type="radio"/>
Drug abuse programs	<input type="radio"/>	<input type="radio"/>	<input type="radio"/>	<input type="radio"/>	<input type="radio"/>	<input type="radio"/>
Reduction of opiate/narcotic use	<input type="radio"/>	<input type="radio"/>	<input type="radio"/>	<input type="radio"/>	<input type="radio"/>	<input type="radio"/>
Alcohol use and treatment programs	<input type="radio"/>	<input type="radio"/>	<input type="radio"/>	<input type="radio"/>	<input type="radio"/>	<input type="radio"/>
Transportation (bus) services in community	<input type="radio"/>	<input type="radio"/>	<input type="radio"/>	<input type="radio"/>	<input type="radio"/>	<input type="radio"/>
Violence prevention	<input type="radio"/>	<input type="radio"/>	<input type="radio"/>	<input type="radio"/>	<input type="radio"/>	<input type="radio"/>

Healthcare Services

MADISON COUNTY COMMUNITY HEALTH ASSESSMENT 2023

7/23/2020

HEALTHCARE PERCEPTIONS & SATISFACTION for PELLA REGIONAL HEALTH CENTER and MARION COUNTY, IOWA

7. How do you feel your local health care providers are doing in addressing the health needs of the following age groups? (Please select one box for each row)

Mark only one oval per row.

	Very Good	Good	Fair	Poor	Very Poor	Not Applicable (NA)
Infants	<input type="radio"/>	<input type="radio"/>	<input type="radio"/>	<input type="radio"/>	<input type="radio"/>	<input type="radio"/>
Age 1 - 12	<input type="radio"/>	<input type="radio"/>	<input type="radio"/>	<input type="radio"/>	<input type="radio"/>	<input type="radio"/>
Age 13 - 17	<input type="radio"/>	<input type="radio"/>	<input type="radio"/>	<input type="radio"/>	<input type="radio"/>	<input type="radio"/>
Age 18 - 25	<input type="radio"/>	<input type="radio"/>	<input type="radio"/>	<input type="radio"/>	<input type="radio"/>	<input type="radio"/>
Age 26 - 44	<input type="radio"/>	<input type="radio"/>	<input type="radio"/>	<input type="radio"/>	<input type="radio"/>	<input type="radio"/>
Age 45 - 64	<input type="radio"/>	<input type="radio"/>	<input type="radio"/>	<input type="radio"/>	<input type="radio"/>	<input type="radio"/>
Age 65 - 84	<input type="radio"/>	<input type="radio"/>	<input type="radio"/>	<input type="radio"/>	<input type="radio"/>	<input type="radio"/>
Over 85	<input type="radio"/>	<input type="radio"/>	<input type="radio"/>	<input type="radio"/>	<input type="radio"/>	<input type="radio"/>

8. How would you rate the following public healthcare services? (Please select one box in each row)

Mark only one oval per row.

	Very Good	Good	Fair	Poor	Very Poor	Not Applicable
Emergency preparedness	<input type="radio"/>	<input type="radio"/>	<input type="radio"/>	<input type="radio"/>	<input type="radio"/>	<input type="radio"/>
Food and nutrition services (WIC programs)	<input type="radio"/>	<input type="radio"/>	<input type="radio"/>	<input type="radio"/>	<input type="radio"/>	<input type="radio"/>
Health screenings	<input type="radio"/>	<input type="radio"/>	<input type="radio"/>	<input type="radio"/>	<input type="radio"/>	<input type="radio"/>
Access to services	<input type="radio"/>	<input type="radio"/>	<input type="radio"/>	<input type="radio"/>	<input type="radio"/>	<input type="radio"/>
Prenatal / child health programs	<input type="radio"/>	<input type="radio"/>	<input type="radio"/>	<input type="radio"/>	<input type="radio"/>	<input type="radio"/>
Sexually transmitted disease testing	<input type="radio"/>	<input type="radio"/>	<input type="radio"/>	<input type="radio"/>	<input type="radio"/>	<input type="radio"/>
Tobacco prevention / cessation programs	<input type="radio"/>	<input type="radio"/>	<input type="radio"/>	<input type="radio"/>	<input type="radio"/>	<input type="radio"/>
Women's wellness programs	<input type="radio"/>	<input type="radio"/>	<input type="radio"/>	<input type="radio"/>	<input type="radio"/>	<input type="radio"/>

9. How would you rate the following healthcare services? (Please select one box in each row)

Mark only one oval per row.

	Very Good	Good	Fair	Poor	Very Poor	Not Applicable (NA)
Ambulance Services	<input type="radio"/>	<input type="radio"/>	<input type="radio"/>	<input type="radio"/>	<input type="radio"/>	<input type="radio"/>
Emergency Room	<input type="radio"/>	<input type="radio"/>	<input type="radio"/>	<input type="radio"/>	<input type="radio"/>	<input type="radio"/>
Family Practice/Medical (clinic) services	<input type="radio"/>	<input type="radio"/>	<input type="radio"/>	<input type="radio"/>	<input type="radio"/>	<input type="radio"/>
Hospital services	<input type="radio"/>	<input type="radio"/>	<input type="radio"/>	<input type="radio"/>	<input type="radio"/>	<input type="radio"/>
Mental health services	<input type="radio"/>	<input type="radio"/>	<input type="radio"/>	<input type="radio"/>	<input type="radio"/>	<input type="radio"/>
Outpatient services (lab, radiology, etc.)	<input type="radio"/>	<input type="radio"/>	<input type="radio"/>	<input type="radio"/>	<input type="radio"/>	<input type="radio"/>
Specialist physician care	<input type="radio"/>	<input type="radio"/>	<input type="radio"/>	<input type="radio"/>	<input type="radio"/>	<input type="radio"/>

10. Are there health care services in your community or neighborhood that you feel need to be improved and or changed? (Please be specific)

11. Over the past 2 years, did you or someone from your household, receive health care services outside of your county? *

Mark only one oval.

- Yes Skip to question 12
- No Skip to question 14

Additional County Services

MADISON COUNTY COMMUNITY HEALTH ASSESSMENT 2023

7/23/2020

HEALTHCARE PERCEPTIONS & SATISFACTION for PELLA REGIONAL HEALTH CENTER and MARION COUNTY, IOWA

12. Please list the health care services you or your household member(s) have received outside of your county.

13. If offered, would you have received the services locally?

Mark only one oval.

- Yes
 No
 Maybe

CHANGES TO HEALTH SERVICES

Over the last few years, Pella Regional Health Center and Marion County Public Health have been working to provide ongoing valuable services to the community. Please help us determine the improvements over the last three (3) years.

14. Please rate the following areas for your community.

Mark only one oval per row.

	Not a problem anymore	Somewhat a problem	Still a problem
Care coordination and expanding rural care	<input type="radio"/>	<input type="radio"/>	<input type="radio"/>
Access to mental health services at the hospital	<input type="radio"/>	<input type="radio"/>	<input type="radio"/>
Access, diagnosis, and placement for mental health services in the community	<input type="radio"/>	<input type="radio"/>	<input type="radio"/>
Lack of qualified healthcare workers seeking employment	<input type="radio"/>	<input type="radio"/>	<input type="radio"/>
Increased Medicaid reimbursement	<input type="radio"/>	<input type="radio"/>	<input type="radio"/>
Substance abuse - Opioid / narcotic use	<input type="radio"/>	<input type="radio"/>	<input type="radio"/>
Illegal drug and alcohol use	<input type="radio"/>	<input type="radio"/>	<input type="radio"/>
Community health education (personal health)	<input type="radio"/>	<input type="radio"/>	<input type="radio"/>
Fight obesity (nutrition education and fitness options)	<input type="radio"/>	<input type="radio"/>	<input type="radio"/>
Access to visiting specialist	<input type="radio"/>	<input type="radio"/>	<input type="radio"/>
Transportation for health services	<input type="radio"/>	<input type="radio"/>	<input type="radio"/>
Suicide prevention and support	<input type="radio"/>	<input type="radio"/>	<input type="radio"/>

15. Which health needs are most pressing TODAY and are in need of improvement?

Check all that apply.

- Wellness options (example healthy lifestyle, food options, exercise, check-ups, screenings)
- Public awareness of healthcare services
- Mental Health / Counseling services
- Public transportation for healthcare
- After hours pharmacy services
- Nutritional education
- Home health / public health
- Hospice
- Dental services
- Obstetrics (family planning and prenatal care) services
- Access to urgent care services
- Healthy eating options
- Cancer services
- Chronic disease prevention (example diabetes or heart failure)
- Elder assistance programs
- Family assistance programs
- Care transitions (movement from one healthcare setting to another or home)

Other: _____

YOUR HEALTH

MADISON COUNTY COMMUNITY HEALTH ASSESSMENT 2023

7/23/2020

HEALTHCARE PERCEPTIONS & SATISFACTION for PELLA REGIONAL HEALTH CENTER and MARION COUNTY, IOWA

16. In general, how would you best describe your health? (Please select only one)

Mark only one oval per row.

	Very Good	Good	Fair	Poor	Very Poor
Description of your personal health	<input type="radio"/>	<input type="radio"/>	<input type="radio"/>	<input type="radio"/>	<input type="radio"/>

17. Compared to a year ago, how would you rate your overall health now?

Mark only one oval per row.

	Much better than a year ago	About the same	Much worse than a year ago
Change in health	<input type="radio"/>	<input type="radio"/>	<input type="radio"/>

18. Does your household have a provider you use for primary care (clinic visits)?

Mark only one oval.

Yes
 No

19. Have you had a physical in the past 12 months?

Mark only one oval.

Yes
 No

20. If you have not had a physical, please provide the specific reason.

21. Do you follow these health practices? (Please select one box for each row)

Mark only one oval per row.

	Yes	No	Not Applicable (NA)
Do you get 2.5 hours of moderately intense physical activity each week	<input type="radio"/>	<input type="radio"/>	<input type="radio"/>
If female, do you have a pap smear every other year	<input type="radio"/>	<input type="radio"/>	<input type="radio"/>
If female and over 40, do you have annual mammograms	<input type="radio"/>	<input type="radio"/>	<input type="radio"/>
If male and over 50, do you have an annual prostate exam	<input type="radio"/>	<input type="radio"/>	<input type="radio"/>
If over 50, have you had a colonoscopy	<input type="radio"/>	<input type="radio"/>	<input type="radio"/>

22. Please complete sentence below - "Are you..."

Mark only one oval per row.

	Yes	No	Not Applicable (NA)
Eating right (Daily, 5 servings of fruits, vegetables, wheat)	<input type="radio"/>	<input type="radio"/>	<input type="radio"/>
Using tobacco products weekly	<input type="radio"/>	<input type="radio"/>	<input type="radio"/>
Exercising 2-3 times weekly	<input type="radio"/>	<input type="radio"/>	<input type="radio"/>
Consuming alcohol (more than 1 drink daily)	<input type="radio"/>	<input type="radio"/>	<input type="radio"/>
Receiving an annual flu shot	<input type="radio"/>	<input type="radio"/>	<input type="radio"/>
Been without a place to stay for multiple nights (homeless)	<input type="radio"/>	<input type="radio"/>	<input type="radio"/>
Having difficulty with employment due to transportation, education, skills, childcare, scheduling, etc	<input type="radio"/>	<input type="radio"/>	<input type="radio"/>

MADISON COUNTY COMMUNITY HEALTH ASSESSMENT 2023

Town Hall Meeting Outcomes (Primary Research)

Top Priorities (votes for top actions)

Mental Health Services: Assess and support depth and breadth of services for Mental Health needs in the communities.
Substance Abuse: Assess and support depth and breadth of services for substance use and abuse in the communities.
Workforce Shortages: Attract and retain employees and workers in/into the county for all sectors.
Preventative and Supportive Services: Communicate, convene, and spread information knowledge for prevention and support services.
Transportation Services: Services for the elderly and residents in need in the community.
Health and Economic Stability Coalition: Coalition group to address the services and access for community health and economic stability needs.

Implementation of Priorities in Action Plan – CHIP

Listed prior in report – double click in a Microsoft word format to open Community Health Improvement Plan (CHIP)



Madison CHA
Implementation Plan

CONTACT INFORMATION AND QUESTIONS

Hospital Contact

Marcia Hendricks MHA, FACHE, CEO
Madison County Health Care System
300 W Hutchings St
Winterset, IA 50273
515-462-5217

Public Health Contact

Shawn Smith, Public Health Administrator
Madison County Public Health
209 E. Madison St. Winterset, IA 50257
ssmith@madisoncounty.iowa.gov
515-462-9051

Consultant Contact

MADISON COUNTY COMMUNITY HEALTH ASSESSMENT 2023

Sarah Pavelka, Pavelka's Point Consulting, LLC

Cedar Falls, Iowa

email: pavelkaspoinconsulting@gmail.com

Phone: 641-780-0180

-----End of Report-----