

COMMUNITY HEALTH ASSESSMENT



2023

Pella Service Area and Marion County, Iowa

Community Health Assessment

PELLA SERVICE AREA AND MARION COUNTY, IOWA

CONTENTS

Executive Summary	4
2023 Community Health Assessment	4
Community Health Assessment Strengths	5
Pella Regional Health Center and Marion County Public Health Department	5
Primary Service Area/Community Health Strengths	5
Town Hall - Community Health Opportunities Identified	5
Town Hall Outcomes - Community Health Opportunities	5
Community Health Assessment Survey - General Feedback	6
Community Health Assessment Survey - Results of Opportunities	6
CHA Survey – Program Needs for Health Concerns	6
CHA Survey – Needs for Health Concerns (above)	7
Iowa Health Rankings: Pella Regional Health Center and Marion County Public Health	8
Methodology	10
Scope and Purpose	10
Assessing Community Health	10
Process to Complete a CHA	10
Steps to Complete the CHA	11
Steps in Process for CHA including Timelines / Milestones	11
Model for Needs Assessment Process and Steps	11
Community Served / Profile Description	12
Marion County, Iowa Community Map	12
Portion of Marion County, Iowa for Needs Assessment - Specifics	12
Detailed Demographics – Marion County, Iowa	13
Collaborating CHA Parties	13
Pella Regional Health Center Profile	13
Marion County Public Health Department Profile	15
Pavelka’s Point Consulting, LLC – External Consulting Services	16
Community Health Assessment Process	16
Agreement/Contracting/Community Leadership (CHA Steps 1 – 3)	16
Create the assessment, survey, and evaluation process (CHA Steps 4)	17
Collect the Data (CHA Steps 5)	17

Town Hall Research Process (Engage & Prioritize with Stakeholders)	25
Document and Define Priorities (CHA Steps 6)	25
Town Hall Outcomes	33
Community Strategy Formulation and Action Planning	33
Planning for Improvement Strategies (CHA Steps 7 & 8)	33
Evaluation of Progress on Key Priorities and Strategic Alignment (CHA Step 9)	38
Community (Service Area) Health Status	38
Primary Research Findings	38
Personal Health Needs: Survey Results	46
Primary Data (Survey) Demographics of Participants 2023	49
Secondary Research Findings 2023	51
Inventory of Community (Service Area) Health Partners	60
Community (Service Area) Resources – Inventory of Services	64
Inventory of Health Services – Pella Service Area and Marion County, Iowa	64
Providers Delivering Care – Marion County, Iowa	67
Service Directory	68
Data Details	71
Plan Tactics for Marion County, Iowa – 2020 to 2023	71
Plan Tactics for Marion County, Iowa – 2017 to 2020	73
Iowa Hospital Data (Secondary Research)	74
CHA Survey Detailed Survey, Findings (Primary Research)	78
Town Hall Meeting Outcomes (Primary Research)	88
Top Priorities (votes for top actions)	88
Implementation of 2023 Priorities in Action Plan – listed prior in report.	88
Contact Information and Questions	88
Hospital Contact	88
Public Health Contact	88
Consultant Contact	89

EXECUTIVE SUMMARY

2023 Community Health Assessment

Community Health Needs Assessments are ongoing processes that systematically evaluate the health needs of the community to improve the health of the population. After the passage of the Patient and Protection and Affordable Care Act of 2012, 501 (c)(3) hospital organizations were given four new tax requirements to begin in tax years after March 23rd, 2012 (Stall, 2012). These new tax requirements were born from the growing concern over non-profit hospitals not providing sufficient community benefit as required by their tax-exempt status (Principe, K., Adams, E. K., Maynard, J., & Becker, E. R, 2012). The four tax requirements included, the implementation of written financial assistance policies, the limitation of charges for emergency or necessary care, adherence to new billing and collection restrictions, and the fourth requirement mandated that non-profit hospitals perform Community Health Needs Assessments (CHNA) (Stall, 2012).

In the past Community Health Needs Assessments, the benefits for both the local hospital organizations, health department and the community were stated in the following methods:

1. Identify key community (service area) health concerns, perceptions, and resources, while creating opportunities for collaboration in delivery of services.
2. Find a mutual understanding of and analyze community (service area) health needs, then prioritize with implementation strategies.
3. Provides guidance to the hospital and local health departments for how they can align their services and community benefit programs to best meet needs.
4. Focus organization's efforts for improvement and structure for addressing social determinants of health in building a relationship between and among stakeholders. All stakeholders can then contribute to improving the health of the community.
5. Provides rationale for current and potential funders to support efforts to improve the health of the community.

Principe, K., Adams, E. K., Maynard, J., & Becker, E. R. (2012). The impact of the individual mandate and Internal Revenue Service Form 990 Schedule H on community benefits from nonprofit hospitals. *American journal of public health, 102*(2), 229-237

Rosenbaum, S. (2013). Principles to Consider for the Implementation of Community Health Needs Assessments. *The George Washington University*. Washington, DC

Stall, E. (2012). Community Health Needs Assessment: 5 Phases to Compliance. Retrieved from <https://www.beckershospitalreview.com/legal-regulatory-issues/community-health-needs-assessment-5-phases-to-compliance.html>

Community Health Assessment Strengths

Pella Regional Health Center and Marion County Public Health Department Primary Service Area/Community Health Strengths

1. Home ownership and high school graduation rates are high in communities
2. Low unemployment rates reported for county, employment opportunities, services for poverty needs (program) are available
3. Compliance with exercise and screenings (healthy choices), high use of preventive care services
4. High rating for dental, eye, family practice, hospice, and pharmacy services
5. Improvement in preventable hospital stays
6. Continued reduction in premature births an indication of women's health services
7. High compliance with preventative screenings and preventative care
8. Improvement in teen health (births) compared to other counties in Iowa (2020 goal)

Town Hall - Community Health Opportunities Identified

Town Hall Outcomes - Community Health Opportunities

1. **Mental Health: Increase the provided and breadth of services for Mental Health needs in the communities.** Mental Health needs: increase providers, access, employment for providers, reimbursement shortage – barrier for services, community responses (example: EMT), and transportation to and from services in other communities.
2. **Substance Abuse: Reduce the concern for and presence of substance abuse related health/safety issues.** Drugs and substance use and presentation services/response Ranking high in use of substances within the communities, health/safety concerns related to substance use, and decreased access to services.
3. **Workforce Shortages:** Collaborating with community partners to attract and retain healthcare and other employees to the county. Housing for low-income workers available to the communities.
4. **Childcare Services/ Access:** Continue to address the access to childcare services within the communities. Continue to work with Partnership study.

- 5. **Transportation services:** Continue to address the needs of transportation services for emergency management and medical treatment needs for the community, including but not limited to the elderly in the communities.
- 6. **Health and Housing Stability Coalition for County** Continue to work on services for the elderly in the community including housing, In-home support, Staffing, Day/acute services, and funding resources

Community Health Assessment Survey - General Feedback

The following were general feedback sections from the Community Health Assessment Survey in which 260 community (service area) participants completed the survey either via paper or electronic formats. The details of the survey process can be found later in this report.

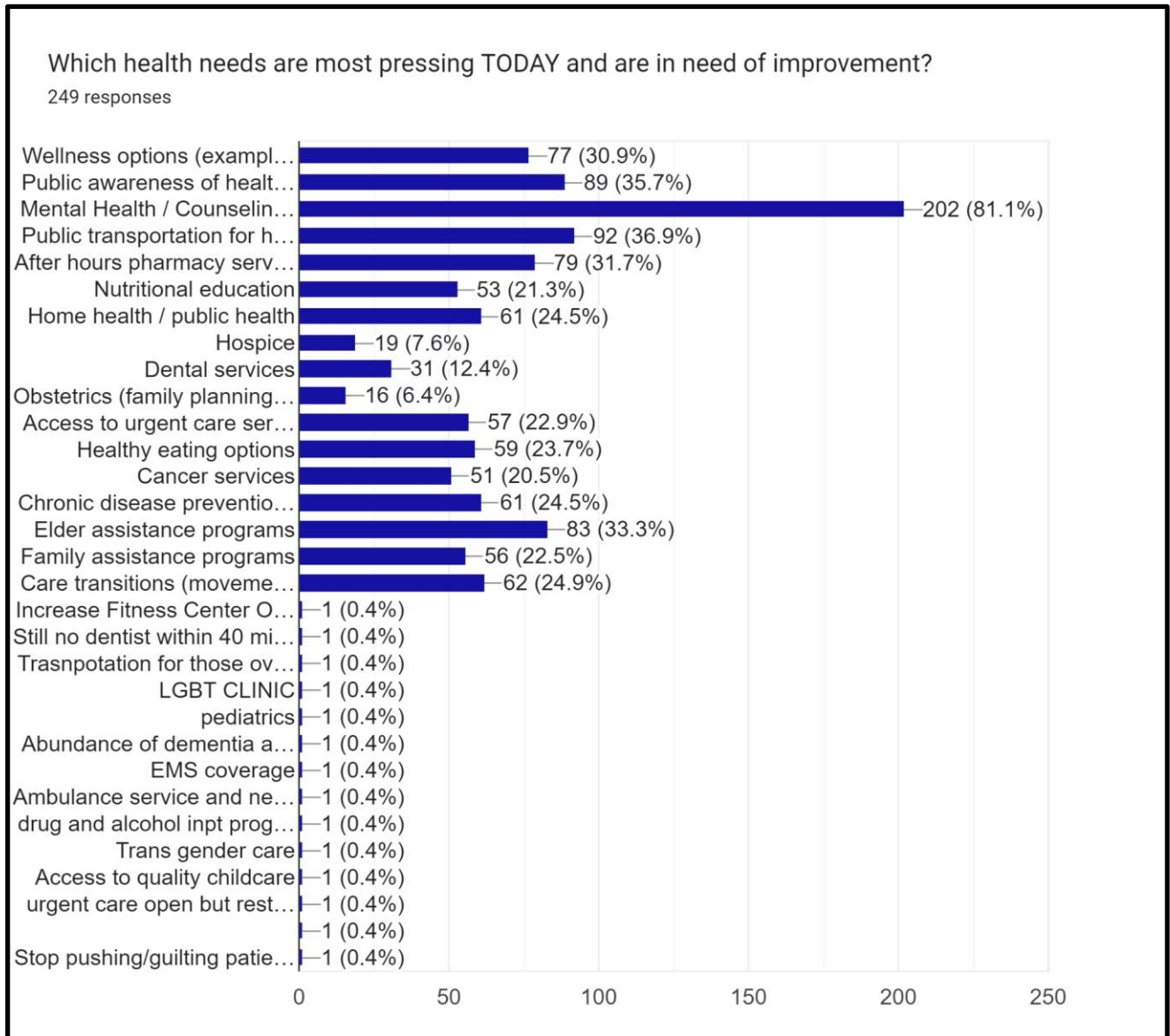
- The percent of Pella and Marion County, Iowa survey participants who would rate the overall quality of care as either Very Good or Good is 84.2% slightly down from 2020 (89.8%) and down from 2017 at 91% (2014 = 50%)
- Pella and Marion County, Iowa survey participants are satisfied with the following hospital services: Ambulance Services/ ER services, Family Practice, Specialty Providers, and Outpatient Services. Participants are satisfied with the following community services: Chiropractor, Eye Doctor, Pharmacy, Hospice, School Nursing, and Dentists.
- Pella and Marion County, Iowa survey participants are NOT satisfied or neutral with the following services: Mental Health, Teen health, family planning, child and young adult health services, Family Planning services (neutral), Home Care services and Nursing Home services (neutral).
- The percentage of participants who have received healthcare services outside of the community over the past two years has increased to 60.8% (2020 at 57.1%, 69.1% in 2017). Of those that provided the type of service here are the services in which they traveled out of the community: Mental Health, Ophthalmology, Surgery, Specialty (Urology, Orthopedics, Dermatology, Oncology, Neurology), and treatment for Chronic Diseases.
- Pella and Marion County, Iowa participants believed there are opportunities for both health concerns and programs to combat the health concerns. The top perceptions of needs are listed in the following two tables as Results of Opportunities.

Community Health Assessment Survey - Results of Opportunities

CHA Survey – Program Needs for Health Concerns	
1. Mental Health / Mental Illness (81.1%)	2. Public transportation for healthcare (36.9%)
3. Public awareness of healthcare (35.7%)	4. Elder assistance services (33.3%)

5. After hours pharmacy services (31.7%)	6. Wellness options (30.9%)
7. Care transitions assistance (24.9%)	8. Chronic disease prevention (24.5%)
9. Home health / public health (24.5%)	10. Healthy eating options (23.7%)

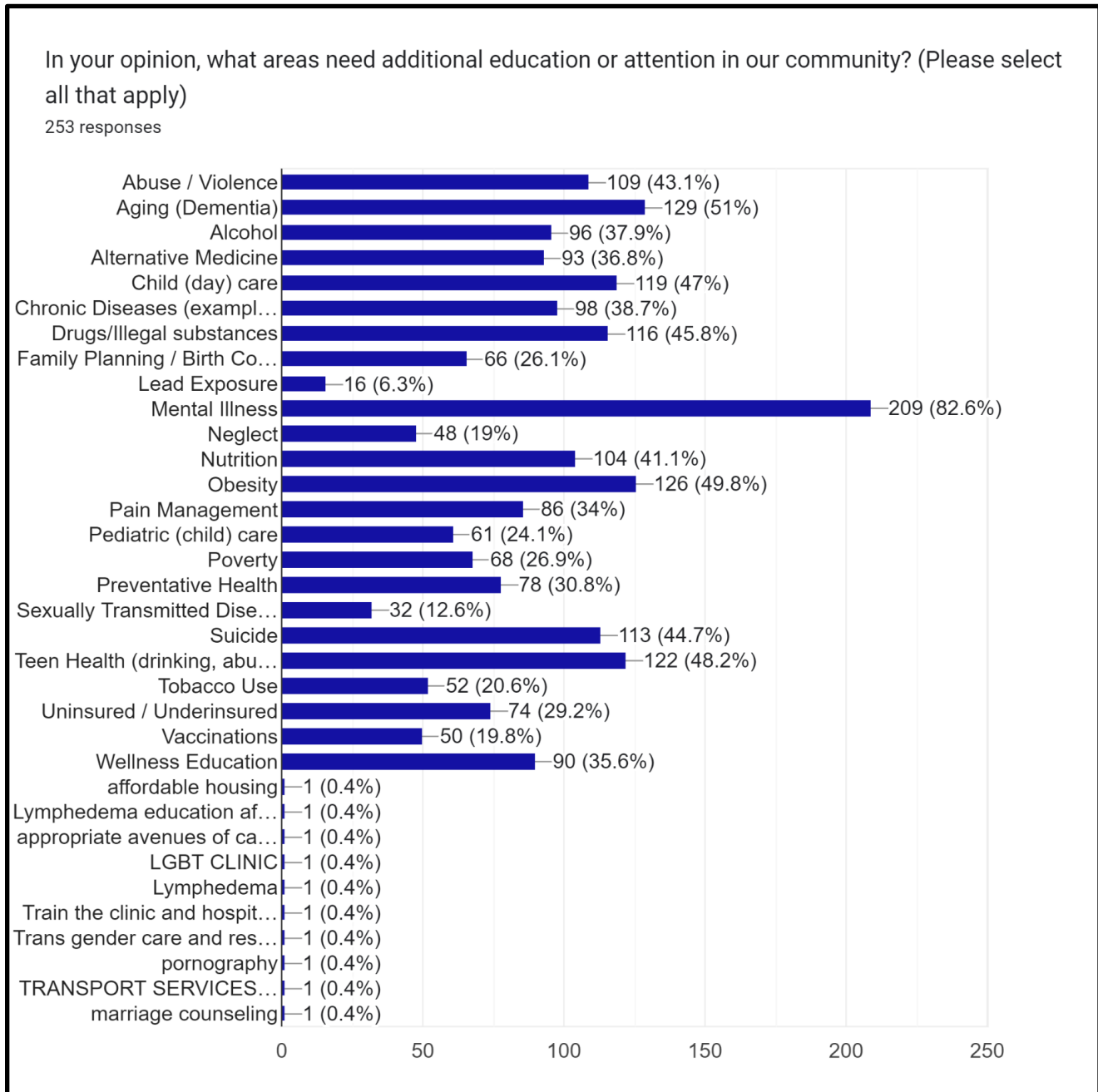
Which Health needs are most pressing today and need of improvement? (survey results)



CHA Survey – Needs for Health Concerns (above)	
1. Mental illness (82.6%)	2. Aging Dementia (51%)
3. Obesity (49.8%)	4. Teen health (48.2%)

5. Childcare services (47%)	6. Drugs and illegal substances (45.8%)
7. Suicide (44.7%)	8. Abuse and violence (43.1%)
9. Nutrition (41.1%)	10. Chronic diseases (38.7%)

Which areas need additional education or attention in our community? (survey results 2023)



According to the 2023 Robert Wood Johnson County Health Rankings study, Marion County, Iowa has the following comparisons. More details can be found in later sections of this report.

- **Demographics and Age:** Marion County, Iowa has a population of 33,642 residents as of 2023 (33,407 in 2020), an increase of 0.9% since 2020 and another 0.7% since 2017. The county population consists of 19.5% (17.8% 2020) at or over the ages of 65 years, an increase of 2.2% since 2017 and the state average was 18.3%. In the under 18 age group the rate is at 23.1% 2023 (2020 at 23.6%), down from the 2017 number of 24.1%. The county is considered 48.7% rural (state 36.0% rural).
- **Diversity:** Marion County, Iowa has 0% of the population that is considered non-proficient in English as a first language. The county has approximately 2.4% Hispanic population, and 2.7% African American, American Indian, and Asian combined. Females make up approximately 49.5% of the population.
- **Income:** Marion County, Iowa median household income is \$66,822 (2020 \$63,500 and Iowa average of \$65,429) and unemployment is at 3.1% (Iowa 4.2%). Regarding the effects of income on the children in the county, 9% of the children live in poverty and 28% are eligible for free or reduced-price lunches (2020 - 27%, 2017 – 31% were eligible and Iowa average of 41% in 2023).
- **Housing and Commutes:** The county is rated with 10% severe housing issues (Iowa overall at 12%, 2020 at 11%, a decrease of 2.0% from 2017). For employment, 26% of the population have long commutes to work and 80% drive alone (Iowa is at 21% and 79% respectively).
- **Education:** The percentage of high school graduation is 95% and a strength in county rankings (Iowa 92%). For college education, Marion County, Iowa has 70% of the population with some college education (Iowa at 70%).
- **Prenatal Care:** According to the Iowa Health Fact Book, as of 2023, 774 mothers started Prenatal care in the first trimester, for a ranking of 13 out of the 99 counties in Iowa. (An overall improvement in rank from 2020.) The number of mothers that smoked during pregnancy was 74, for an Iowa rank of 21.
- **Primary Care and Hospital Services:** The ratio of population to primary care providers was slightly better than the 2020 report with 1,110:1 (2020 - 1,030 residents to 1 provider. Iowa ratio of 1,360:1, 2017 ratio was 1,040:1). Preventable Hospital stays were below the Iowa number at 2,113 (2020 was at 3,318 stays and 2023 Iowa 2,400).
- **Insured:** The uninsured adult population rate in Marion County, Iowa is 4% (), slightly lower than the Iowa rate of 6%, and less than the 2020 at 5%, and 2017 report by 6%. The uninsured rate for children is 2%, lower than the Iowa rate of 3% for 2020 and 2023.
- **Access:** Access to exercise opportunities is only 74% (2020 was at 86%, 2017 was 72% and below the Iowa rate of 79%) and food insecurity is at 9.0 (Iowa rate is 8.6). Mammography screenings are at 51% (2020 at 55%, 2023 Iowa rate is 47%, and in 2017- 77%). A score of 81% of children at 2 years of age are up to date on a complete series of vaccinations, compared to the 70.1% at the state (source: Iowa Department of Public Health).
- **Health Conditions:**

- The “Frequent Mental Distress” rate for Marion County, Iowa is 13% (2020 at 10%), with an Iowa rate of 14%. According to the CDC, 7.6% of Americans over the age of 12, had depression and living at or below the poverty level people were 2.5 times more likely to have depression (source: <https://www.cdc.gov/nchs/data/databriefs/db172.htm>).
- Diabetes prevalence is at a rate of 8% (2020 at 9%, and less than 2023 Iowa’s rate of 9%).
- Adult Obesity rates are at the Iowa rate of 34% (2020 at 34%, which is 0% higher than the 2017 rates).
- Adult smoking is 16% (2020 at 15%) one percent below the Iowa rate, and an increase of 1% since 2020 and an additional 1% since the 2017 report.
- Physical inactivity rate is 21% (2020 at 26%, 24% in 2017), however 2% lower than Iowa’s rate. The Access to exercise opportunities is lower at 74%, with the Iowa rate of 79%.
- The percentage of alcohol impaired driving deaths in Marion County, Iowa is 56% (increasing from 2020 at 42%), almost double the Iowa percentage of 27%. Excessive drinking percentages were also below the Iowa rate, at 24% and 25% respectively (increasing since 2020 at 21% and 22%).

METHODOLOGY

Scope and Purpose

The Federal Patient Protection and Affordable Care Act requires that each registered 501(c)3 hospital conduct a Community Health Assessment (CHA) at least once every three years, share the assessment results with the community, and adopt a strategy to meet the health needs of the community (service area).

The IRS Notice 2011-52 can be found at the following link and was followed for the purposes of this process, assessment, and report. <https://www.irs.gov/charities-non-profits/community-health-needs-assessment-for-charitable-hospital-organizations-section-501r3>

Assessing Community Health

To assess the needs of the community (service area) the hospital must identify the significant health needs, prioritize those health needs, and identify resources potentially available to address them. Health needs of a community include improvement or maintenance of health status across the community, parts, neighborhoods, or population with health disparities. These needs can include financial, access, illness prevention, nutrition or social, behavioral, environmental factors that influence health. Resources can include organization, facilities, and programs within the community.

Process to Complete a CHA

The recommended requirements for the CHA include the method of discovery, qualify community needs, quantify needs, and complete data analysis and comprehensive needs assessment. Federal

regulations state that the following process must be completed in order to complete a Community Health Assessment (CHA).

1. Define the community it serves (discovery)
2. Assess the health needs of that community (qualify community needs)
3. Solicit and consider input from persons who represent board interest of the community, including those with special knowledge or expertise in public health (quantify needs)
4. Document the CHA written report that is adopted for or by the hospital facility (complete analysis and comprehensive needs assessment)
5. Make the CHA report widely available to the public.

Steps to Complete the CHA

The following is the process steps with milestones completed during the Community Health assessment development. This process and milestones follow closely with the recommendations from the American Hospital Association and are a detailed list of actions taken in the above process per the IRS requirements (Source:

http://www.healthycommunities.org/Education/toolkit/index.shtml#.XC_37lxKg2x).

Steps in Process for CHA including Timelines / Milestones

1. **Agreement and contracting** – discuss critical success factors for CHA process (completed 3/19/2023)
2. **Meeting with community leadership** – planning, methodology, and agreement of scope and services (Completed 3/12/2023 and 3/19/2023)
3. **Identify and engagement of key stakeholders** – define the community and methodology (4/11/2023)
4. **Create and process evaluation (survey/ assessment) methods** – work with organization to develop survey that reflects the community, needs, and priorities (3/1/2023 - 3/31/2023)
5. **Collect and analyze the data** – including community health issues of past and future (4/1/2023 to 8/30/2023)
6. **Document and communicate priorities** – work with organization to define the priorities and engagement of key stakeholders including a Town Hall meeting(s) (9/19/2023)
7. **Plan improvement strategies** – work with organization for final report and distribution as needed (9/19/2023 to 12/15/2023)
8. **Organization to implement improvement plans** – work with key stakeholders in community for best practice implementation and success (12/15/2023 and ongoing)
9. **Evaluate progress on the key priorities and strategic alignment** – reevaluate progress and continual planning for future needs (FY2023 to FY2025)

Model for Needs Assessment Process and Steps

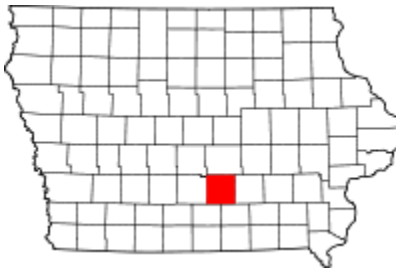
CLOSELY ALIGNED TO ABOVE STAGES OF THE PROCESS



Reference: Association for Community Health Improvement – American Hospital Association

Community Served / Profile Description

Marion County, Iowa Community Map



Portion of Marion County, Iowa for Needs Assessment - Specifics

It was determined by the leadership of Pella Regional Health Center and the Marion County Public Health Department that the Marion County Community Health Assessment will include those individuals that live or receive health services in Marion County, Iowa AND live in the communities of Pella, Iowa. These communities include Sully, Leighton, Otley, Prairie City, Monroe, and Pella. This population will not include those that are served by Knoxville Hospital and Clinics. This would be the overall (total) population for this process is 14,828 (roughly half of the 2020 Census data). A statistically significant sample size (n=260) was achieved during the survey phase of the process and represented both demographic, social/economic, religious, and age differences. Efforts were made to ensure that there was a broad interest represented in each of the data collection and prioritization phases.

The population of Marion County, Iowa is 33,417 residents as of 2020, an increase of 0.7% since 2020. The county is considered 48.7% rural, covering approximately 571 square miles. The population density is approximately 58 people per square mile (Iowa is 54.5 residents per square mile). (Source:

<https://www.census.gov/quickfacts/fact/table/IA,marioncountyiowa,marshallcountyiowa/PST045222>)

The county population consists of 19.8% at or over the age of 65 years, (an increase of 2.0% since 2020 and 2.7% since 2017) and the state average is 18.3% (2020 was 17.1%). In the under 18 age group, Marion County, Iowa has a population of 23.1% (a decrease since 2020, 23.6%, and a decrease of 1% since 2017) and the state average is 22.6%.

The communities within Marion County, Iowa are Pella, Knoxville, Pleasantville, Melcher-Dallas, Bussey, Harvey, Hamilton, Swan, Marysville and unincorporated Attica, Cloud, Columbia, Flagler, Otley, Pershing, and Tracy. Major highways include Iowa Highways 5, 14, 92, 163, and 316. (source: https://en.wikipedia.org/wiki/Marion_County,_Iowa). Major types of employment in Marion County, Iowa area education, health and social services (35.2%), manufacturing (27.7%), agriculture (16.1%), Professional, management, administrative (governmental) (10.5%), and other services (4%) (source: http://www.city-data.com/county/Marion_County-IA.html).

Detailed Demographics – Marion County, Iowa

Detailed Demographics

Source: www.city-data.com

Marion County Iowa

Zip	Name	County	Pop (2020)	Pop (2017)	Pop (2014)	Change		HHave Size	Income	Med Age	Females	Males	White	Black	Amer Ind	Hisp	
50219	Pella	Marion	10464	10,225	8,916	2%		5327	2.4	\$76,524	32.9	5,365	4,860	9,728	68	15	175
50228	Prairie City	Jasper	1700	2,812	2,417	-40%		1093	2.8	\$77,687	40.5	1,472	1,339	2,324	9	4	38
50170	Monroe	Mar/Jasper	1967	2,756	2,745	-30%		1213	2.4	\$54,695	41.7	1,390	1,366	2,697	6	3	11
50251	Sully	Jasper	881	1,358	1,270	-40%		517	2.7	\$71,937	41.1	698	659	1,261	2	NR	3
50214	Otley	Marion	NR	1,099	850	NA		333	3.5	\$73,732	33.8	618	481	813	6	NR	4
50143	Leighton	Mahaska	158	153	153	1%		248	3.0	\$57,386	40.7	336	401	595	NR	NR	3
	Iowa/Ave								2.8	\$68,660	38.45						

Collaborating CHA Parties

Collaborating with several different agencies in, around, and those that serve Marion County, Iowa, the CHA was completed. The following is a summary of key stakeholders in the CHA process. A detailed list of individuals or organizations who have played at least one key role in the assessment are listed in the Community Health Partners and Resources section of this report.

Pella Regional Health Center Profile

Address: 404 Jefferson Street, Pella, IA 50219

CEO: Robert Kroese, MHA

Mission: To provide healthcare and healing services with Christian compassion.

Vision: To lead the region in providing compassionate service and clinical excellence through our health ministries.

About: When Pella Community Hospital first opened its doors in 1960 as an acute care hospital for the town of Pella, there were 17 employees, seven doctors from Pella and about 24,000 square

feet. The town was thrilled with their new hospital and turned out in substantial numbers—nearly 6,000 people—to attend the open house. Over the past five decades, the hospital has made both major and minor changes, all to improve access and the quality of health care in the area. In the 70s and 80s there were numerous construction projects to expand the scope of what could be provided to patients and residents. In the 90s, there were numerous services added to provide specialized services, such as Dialysis, to those in need. In 1996, the Pella Medical Clinic merged with Pella Community Hospital to form Pella Regional Health Center and clinics opened in surrounding communities. This collaboration and regional expansion are a great milestone in the history of the hospital and what it has become today. **(Source:)** <https://www.pellahealth.org/about-us/history/>

History of Pella Regional Health Center: History about Pella Regional Health Center can be found at <https://www.pellahealth.org/about-us/history/>

Network Affiliation: Pella Regional Health Center is in a management affiliation with University of Iowa Hospitals and Clinics.

Services: Pella Regional Health Center offers a variety of inpatient (acute/skilled) and outpatient services to the county and surrounding areas. A comprehensive list of services can be found at www.pellahealth.org/services/ . The following is a list of services provided, but not limited to at Pella Regional Health Center

- | | |
|--|---|
| Acute Care | Inpatient Hospital Care |
| Allergy Services | Inpatient Hospice Care |
| Audiology | Internal Medicine |
| Behavioral Health | IV Therapy |
| Birth care/ Pregnancy | Laboratory |
| Breast Health | Maternity |
| Cancer Program | Medical Imaging |
| Cardiac Rehabilitation Program | Mental Health |
| Cardiac Testing | Nephrology |
| Chronic Care Management | Neurology |
| Dermatology | Nutrition Services and Cafe |
| Diabetes Center & Support Group | Obstetrics & Gynecology |
| Diagnostic Testing | Occupational Health |
| Ears, Nose & Throat (Otolaryngology) | Occupational Therapy |
| Emergency Medical Services | Oncology (see Cancer Program) |
| Family Medicine | Ophthalmology-Cataract Surgery |
| Foot and Ankle Surgery (Podiatric Surgery) | Orthopedics/Orthopedic Surgery |
| General Surgery | Orthotics (see Prosthetics & Orthotics) |
| Genetic Testing and Counseling | Otolaryngology |
| Gynecology | Pain Management |
| Heart and Vascular | Pathology |
| Home Health | Pediatric Dentistry |
| Hospice | Perinatology |
| Imaging Services | Pharmacy |
| Infection Prevention | Physical Therapy |
| Infusion Center | Plastic Surgery |

Podiatry
Pulmonology
Rehabilitation and Therapy
Reproductive health – Women’s Health
Respiratory Care
Rheumatology
Skilled Nursing
Sleep Disorders Program
Speech-Language Therapy

Sports Medicine Program
Surgery
Urgent Care (Walk-in Care)
Urology
Vascular Care
Vein Care
Wound Care and Hyperbaric Medicine
Women’s Health

Marion County Public Health Department Profile

Address: 2003 N. Lincoln, Box 152, Knoxville, IA 50138

Director: Kim Dorn, MBL

Mission: Marion County Public Health Department Prevents Disease through Health Promotion and Protection using Assessment, Policy Development and Assurance.

Vision: Provide health guidance and enforcement for our citizens to have the opportunity to make informed choices regarding their health and wellness, strive for a clean and safe environment, and the assistance to access needed health related services.

About: More information about Marion County Public Health Department at <http://www.marionph.org/about/mission.html>

Services: Marion County Public Health is a partnering organization with Pella Regional Health Center. More information can be found at: <http://www.marionph.org/> . Services cover the entire county and are listed below, but not limited to the following:

Breast Cancer Screenings
Blood Pressure clinics
Blood draws & specimen collection
Childcare Nurse Consultant
Children Insurance program
Community Care Coordination
Emergency Response/Preparedness
Environmental Health
First Five Healthy Mental Development
Homemaker services
Dressing Changes
Homemaker services

Immunization Clinics and Child Immunization Injections
Lead prevention programs
Material, Adolescent and Child health
Medication Management
Oral health programs
Parents as Teachers program
Patient Education
Referral to community services
Skilled Nursing visit by RN
Tobacco programs
WIC

Pavelka’s Point Consulting, LLC – External Consulting Services

Address: 5832 West Mt Vernon Road, Cedar Falls, Iowa 50613

CEO: Sarah Pavelka, PhD, MHA, OTR/L, CPHQ, FNAHQ

Bibliography: Sarah Pavelka, PhD, MHA, OTR/L, CPHQ, FNAHQ has over 20 years of experience leading and coaching in organizational performance and continuous improvement in business, industry, education, and healthcare. Sarah is the CEO/owner of Pavelka's Point Consulting, LLC, and Program Director for Walden University, Master of Healthcare Administration Program.

Dr. Pavelka has professional and academic experiences as a 13-year faculty member for the Masters in Healthcare Administration program at Des Moines University, Improvement Advisor at the Iowa Healthcare Collaborative, and Adjunct Faculty for Upper Iowa University. Her previous professional experiences include the Quality Management Director at the Iowa Foundation for Medical Care, Director of Business and Industry Relations for Pella Regional Health Center, and clinical experience as the Director of the Occupational Therapy department for Pella Regional Health Center in Pella, Iowa.

Dr. Pavelka's extensive volunteer experiences included being a six-time National Baldrige examiner, as well as, a seven-year state examiner for the Iowa Recognition for Performance Excellence. She was also the Director-at-Large for the National Association for Healthcare Quality Board from 2014 to 2016. Sarah was also the Past-president of the Iowa Association for Healthcare Quality Board; a task force member for the Iowa Hospital Association; and a member of the Des Moines University Alumni Board.

Sarah holds degrees in Biology and Psychology from Luther College; an Occupational Therapy degree from Concordia University-Wisconsin; MHA from Des Moines University, and a Ph.D. from Walden University. She is a Fellow for the National Association for Healthcare Quality (FNAHQ); a Certified Professional in Healthcare Quality (CPHQ); and has credentials in Occupational Therapy, Ergonomics, Lean, and Six Sigma Black Belt.

Community Health Assessment Process

The following sections represent the process of the Community Health Assessment completed with Pella Regional Health Center and Marion County Community Leadership and Key Stakeholders. These process steps include creating purpose, defining scope and community, engagement of key leadership, survey assessment, analysis, prioritization, reporting of outcomes, and action planning.

The IRS requirements for a CHA are a four-phase; the process was represented earlier in the document (see Methodology – Scope and Purpose), and further explored in the following sections.

Agreement/Contracting/Community Leadership (CHA Steps 1 – 3)

On March 12, 2023, leadership from Pella Regional Health Center, and Pavelka’s Point Consulting, LLC met and discussed contracting arrangements, critical success factors, CHA process, timelines, and who would be key stakeholders. Shortly following this initial contracting meeting, these parties met on

March 19, 2023, for planning for the IRS compliant CHA, further methodology, distribution, survey needs, agreement, and scope of services. Key leadership and stakeholders were also discussed, and a list of involvement was compiled in meeting minutes. It was elected at these meetings to move forward with the CHA process and initial survey distribution would happen at the following April 2023 and survey conclusion on or about October 2023.

Create the assessment, survey, and evaluation process (CHA Steps 4)

Starting in March 2023, a Community Health assessment survey was designed and created. The leadership from Pella Regional Health Center and Public Health were allowed to review the survey as it was developed. The survey questions included similar or prior questions to the 2020 to 2023 survey for comparison purposes (updates to language and current patient centered care standards were completed in questions as needed). New questions also address the actions or priorities from 2020 to 2023 completed in the communities but Pella Regional Health Center and Public Health, along with the partnering community entities. Questions related to Social Determinants of Health were also added as recommended by best practice. More information can be provided on Social Determinants of Health at Healthy People 2030 <https://health.gov/healthypeople> or Health Leads (source of survey questions) at <https://healthleadsusa.org/>.

Collect the Data (CHA Steps 5)

Collection of survey data consisted of many forms and methods. Survey links, fliers, and paper copies were sent to local businesses and employers. Surveys were left at the Pella Regional Health Center and Public Health Departments for residents of the communities and either electronic or paper (hard) copies were allowed to be submitted. Leadership for the process also attended several community events, school events, and religious gatherings to encourage participation in the survey process. Electronic links were sent multiple times in the local newspapers, provided through the Hospital website, and patients were encouraged to complete the survey before or after healthcare services. During the process, the leadership provided translation services (i.e. vision or language), electronic and paper copies, and a brief description of purpose to those who were taking the survey. No material or monetary incentives were provided when taking the survey.

COMMUNITY PRESS RELEASE

The following was a press release that was sent to the local newspaper entities and distributed for general awareness of the survey being conducted.



NEWS RELEASE

For Immediate Release: June 23, 2023
For Information Contact: Andrea Barker, Public Relations, 641-621-2358
abarker@pellahealth.org

**Survey Participation Needed: Pella Regional Health Center
Community Health Needs Assessment**

PELLA, Iowa – Pella Regional Health Center is partnering with Marion County Public Health and other community health providers to update the 2020 Community Health Needs Assessment. With this required update, we need your feedback and suggestions regarding healthcare delivery in our community.

A short survey is available online at <https://www.pellahealth.org/about-us/community/> for the public to complete. The survey will be open until Friday, July 28, 2023. All responses will be confidential.

“We appreciate the time and support patients and families will give to complete this survey,” said Bob Kroese, CEO. “The survey is a requirement that not-for-profit hospitals must do at least every three years, and we appreciate the feedback that we receive.”

Pella Regional Health Center is a not-for-profit provider of healthcare that is accredited by The Joint Commission. Its mission is to provide healthcare and healing services with Christian compassion. Information on Pella Regional Health Center and its clinics is available by calling Public Relations at 641-621-2358 or visiting the website, www.pellahealth.org.





C O M M U N I T Y
Join the Conversation!

Pella Regional Health Center is partnering with Marion County Public Health and other community health providers to update the Pella Regional Community Health Needs Assessment.

We need your feedback and suggestions about healthcare delivery in our community. Everyone who lives or works in Marion County is encouraged to scan the QR code and take the survey.

The 2023 CHNA online survey will be open until
Friday, August 11.

All responses will be confidential.
PellaHealth.org/about-us/community/



Website



INSPIRED
BY *community.*

SCAN ME





COMMUNITY
Join the Conversation!

Take the Community Health Needs Survey

FLYERS

Pella Regional Health Center & Marion County Public Health invite you to help improve the care and services in our community by taking a brief survey. Your responses will be confidential.



SCAN ME



Pella Regional Health Center is partnering with Marion County Public Health and other community health providers to update the Pella Regional Community Health Needs Assessment.

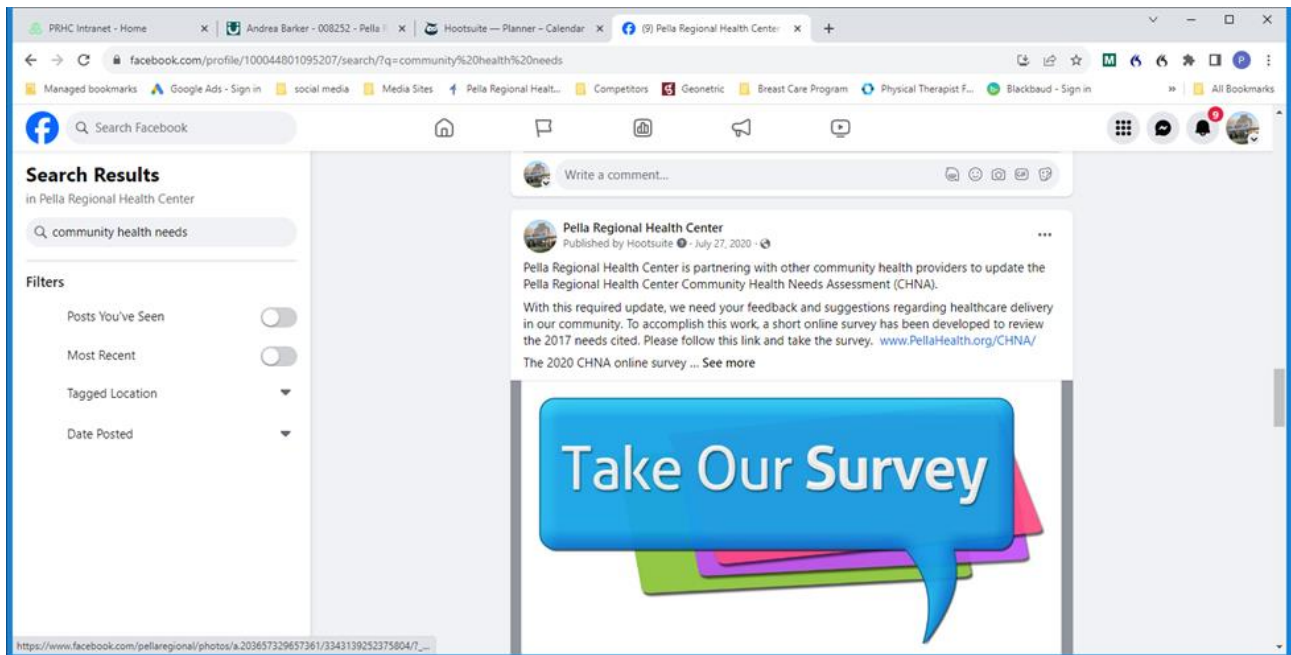
We need your feedback and suggestions about healthcare delivery in our community.

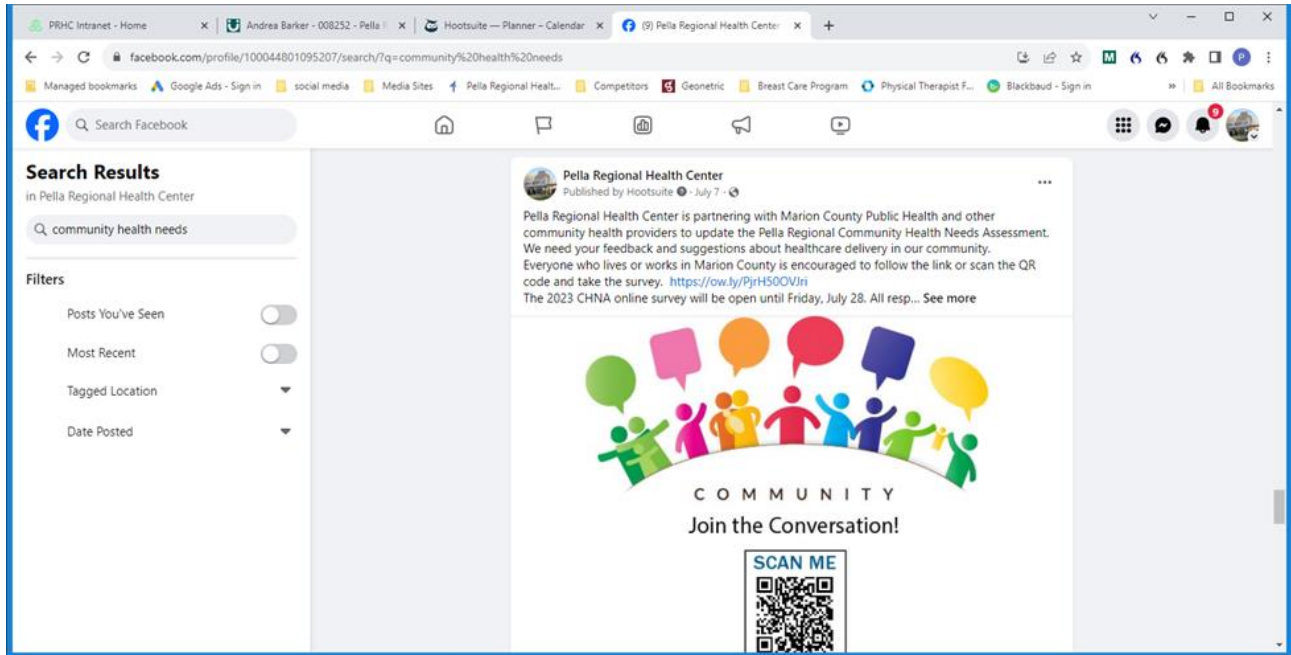
Everyone who lives or works in Marion County is encouraged to scan the QR code and take the survey.

SCAN ME



Social Media





EMPLOYEE AND COMMUNITY COMMUNICATIONS

The following is a direct emailing campaign for the employees in and around the Pella Regional Health Center and within the county. The organizations also posted the information in the local governmental mailings, Facebook ads, local newspaper ads, and Chamber of Commerce. This was also distributed in local grocery stores, places of worship, restaurants, community events, school events, and local gathering establishments.

PRHC email content
6-21-23

To: Pella Regional Health Center Providers and Staff
Subject: Community Health Needs Assessment Survey 2023

Pella Regional Health Center is partnering with Marion County Public Health and other community health providers to update the Pella Regional Health Center Community Health Needs Assessment (CHNA).

With this required update, we need your feedback and suggestions regarding healthcare delivery in our community. To accomplish this work, a short online survey has been developed to review the needs cited. Please follow [this link](#) or scan the QR code below and take the survey.

The 2023 CHNA online survey will be open until Friday, July 28. All responses will be confidential. Thank you in advance for your time and support by participating in this important request.

Sincerely,



Bob Kroese, CEO
Pella Regional Health Center



Hello! Pella Regional Health Center is conducting a Community Health Needs Assessment, and we would like to invite you to take part in an online survey. Please complete the survey at your earliest convenience by following this link: www.PellaHealth.org/CHNA/ The survey will be open until Friday, July 28, 2023. Paper copies of the survey are available upon request.

Information from this study will be used by Pella Regional Health Center to develop an implementation plan to improve the health of our community. The information gathered from the survey will give us a snapshot of community health and what members of the community think are the areas of greatest need.

Anyone is welcome to complete the survey so please share the link with employees, friends, neighbors and clients.

Thank you for helping us gain valuable insights into the health needs of our community. If you have questions, feel free to call Andrea Barker, Director, Marketing & Development, Pella Regional Health Center. Results of the assessment will be available on PellaHealth.org later this year.

Help Improve Healthcare in Your Community

Pella Regional Health Center & Marion County Public Health invite you to help improve the care & services of our community by taking a brief survey.
Your responses will be confidential.

Go to: www.PellaHealth.org/CHNA/

Analyze the Data (CHA Steps 5 continued)

During and following the community survey process, data from external sources (secondary data) were being collected and analyzed. This included data from sources such as Robert Wood Johnson County Health Rankings, City Data, Iowa Hospital Association (IPOP data), Vital Statistics, etc. Survey data was considered primary data research and collected public health needs, perceptions, satisfaction with care and services for both public, private, and governmental agencies serving the Marion County, Iowa area. This data can be found in the following charts in the Data Details section with both the Iowa Hospital Association data (secondary), CHA Survey Data (detailed primary) and Town Hall meeting outcomes (primary).

Both the external, secondary data, and the initial analysis of the survey outcomes (primary data) were analyzed and presented in the September 19, 2023, town Hall meeting. Top initial results were

presented for the key stakeholders to continue to analyze, prioritize, and support realistic objectives for Pella Regional Health Center and Marion County, Iowa.

Town Hall Research Process (Engage & Prioritize with Stakeholders)

Document and Define Priorities (CHA Steps 6)

Community leadership should always be involved with the determination and prioritization of key actions within a community (service area). Members will not only buy-in to the mission of the actions at a higher support level, but they will also often provide key resources that are needed for such action, which are vital to the actions success and often cannot happen with only hospital supporting resources. Town halls are a focus group type setting where members can provide insight, consensus, and assist with prioritization of health issues. These sessions gathered input from key stakeholders, started priorities, and encouraged on-going dialog between entities.

Entities invited to the Town Hall meeting included local hospital, public health, mental health providers, service providers, employers, local residents, faith-based leadership, school leadership, business leaders, local government officials, and those that receive care (including persons with chronic conditions, un-insured, low-income, and minority groups).

Key community stakeholder groups were invited to the September 19, 2023, Town Hall meeting. The Town Hall meeting was held from 5:30 pm to 6:30 pm. At the Town Hall meeting, a short informational presentation was given, facilitation of priorities from the survey and health ranking information was completed, and key findings were determined out of one 60-minute meeting.

TOWN HALL GENERAL PUBLIC INVITE (LETTER)

Public notice sent to local newspapers, hospital websites, and local posting for attendance at the Town Hall meeting. All community members were invited to attend, and snacks were provided.

**NEWS RELEASE**

For Immediate Release: September 12, 2023
For Information Contact: Andrea Barker, Public Relations, 641-621-2358
abarker@pellahealth.org

Town Hall Meeting Participation Needed: Pella Regional Health Center Community Health Needs Assessment

PELLA, Iowa – Pella Regional Health Center has conducted a Community Health Needs Assessment survey this summer, and we would like to invite you to take part in a Town Hall Meeting on:

Tuesday, September 19 from 5:30 pm-6:30 pm
Pella Regional Health Center Conference Center, Entrance 5

Information from the survey and meeting will be used by Pella Regional Health Center and community partners to develop an implementation plan to improve the health of our community. The information gathered from the survey and town hall meeting will give us a snapshot of community health and what members of the community think are the areas of greatest need.

The meeting will include a brief presentation on the health needs identified in the 2023 survey, then attendees will be asked to work in small groups to generate ideas for specific projects that will address the needs found through the survey process. Sarah Pavelka, PhD, MHA, OTR/L, CPHQ, FNAHQ, of Pavelka's Point Consulting, LLC will facilitate the meeting and prepare the final report.

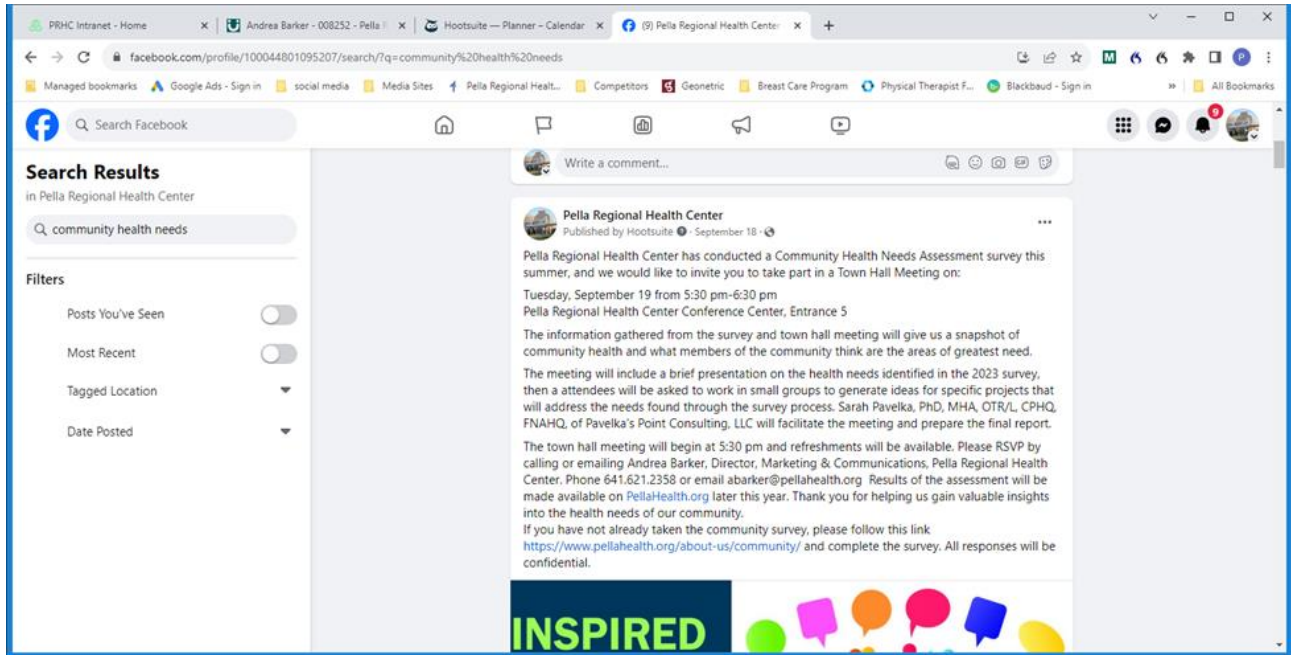
Your experiences and suggestions to improve health care delivery within our service area is very valued. We encourage your attendance in order to ensure representation from all segments of our service area and to meet the federal requirements.

The town hall meeting will begin at 5:30 pm and refreshments will be available. Please RSVP by calling or emailing Andrea Barker, Director, Marketing & Communications, Pella Regional Health Center. Phone 641.621.2358 or email abarker@pellahealth.org Results of the assessment will be made available on PellaHealth.org later this year. Thank you for helping us gain valuable insights into the health needs of our community.

If you have not already taken the community survey, please follow this link <https://www.pellahealth.org/about-us/community/> and complete the survey. All responses will be confidential.

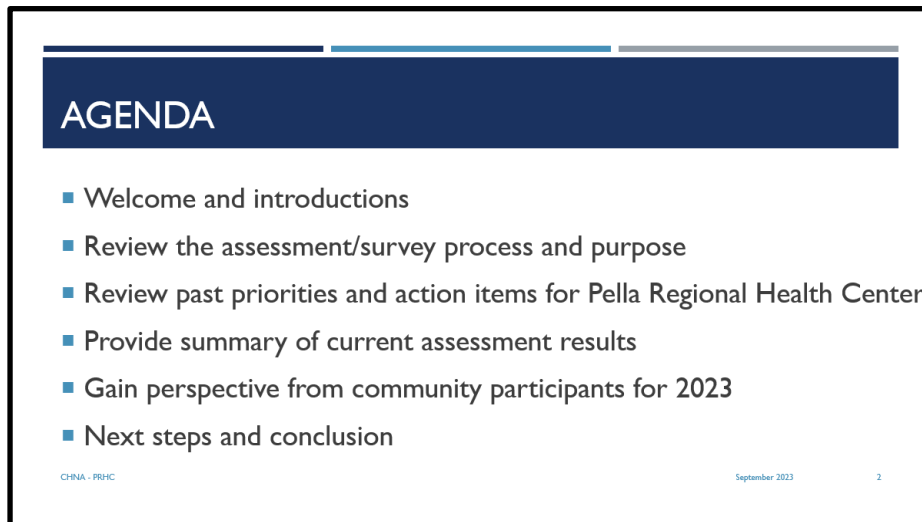


###



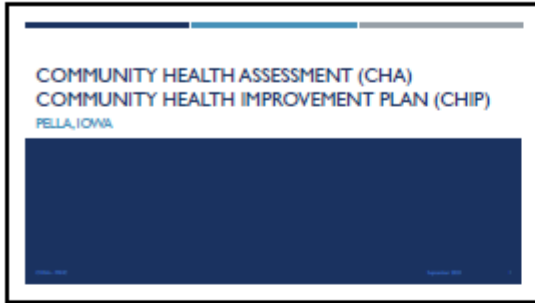
TOWN HALL AGENDA

The following Agenda and Power Point were completed at the September 19, 2023, Town Hall meeting. At the end of the meeting, it was determined to have an initial list of community priorities from the analysis of primary and secondary research data. These initial priorities list will be further discussed with a steering committee of community leadership and represent community-based organizations which can address health concerns. This group, considering the priority and input from the Town Hall meeting will strategize and formulate final action plans for Pella Regional Health Center and Marion County, Iowa health needs.

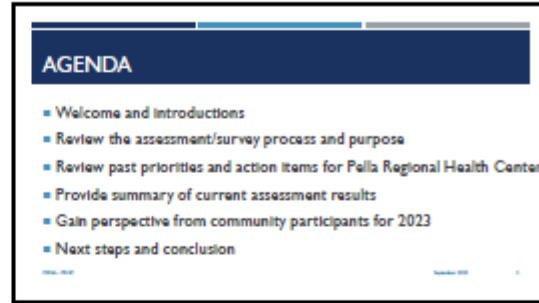


TOWN HALL POWERPOINT PRESENTATION

The following PowerPoint presentation (please see image below for complete slide deck) was presented to key community stakeholder groups at the September 2023 Town Hall meeting.



1



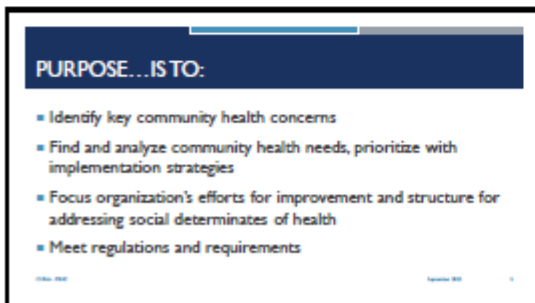
2



3



4



5



7

PRHC. Community Health Needs Assessment

2023

REQUIREMENTS

- Five steps outlined order to complete a CHA
 - Define the community
 - Assess communities' health needs
 - Include input representing broad interests of the community
 - Document the CHA
 - Make submit a report and make it available to public

8



9

PAST PRIORITIES AND ACTION ITEMS

10

PRIORITIES – 2019-2023

- Provide depth and breadth of service for mental health needs
- Address childcare services within the communities
- Attract and retain healthcare workers
- Services for the elderly in the community
- Substance abuse prevention and access to services
- Service and access for teen health needs

11

IMPROVEMENTS – 2019-2023

(NOTE: % MAY NOT ADD UP TO 100% - ADJUST ALL QUESTIONS WERE OPTIONAL)

Priority Area	Not a Problem	Somewhat a Problem	Still a Problem
Provide depth and breadth of service for mental health	3%	22%	41%
Address childcare services within the communities	22%	22%	10%
Attract and retain healthcare workers	4%	42%	42%
Services for the elderly in the community	23%	30%	23%
Substance abuse prevention and access to services	2%	42%	45%
Service and access for teen health needs	23%	23%	42%

12

CURRENT ASSESSMENT RESULTS

13

IMPROVEMENTS (2019-2023)

- Access to childcare services (perception of)
- Unemployment rate
- Preventable hospital stays
- Pre-mature births (Women's Health services)
- Preventative screenings

14

STATE HEALTH RANKINGS - 2023

SOURCE: COUNTY HEALTH RANKINGS RANK: 17TH

Health Characteristics	Source (PR)	Source (MI)	Source (MI)	Source (MI)
Length of Life	72	69	69	69
Preventable Deaths	72	69	69	69
Quality of Life	72	69	69	69
Rate of Injury from Motor Vehicle Traffic	69	69	69	69
Rate of Injury from Non-Motor Vehicle Traffic	69	69	69	69
Rate of Injury from Falls	69	69	69	69
Additional Health Characteristics (not included in overall ranking)	Source (PR)	Source (MI)	Source (MI)	Source (MI)
Air Exposure	69	69	69	69
Arthritis Prevalence	69	69	69	69
Chronic Diseases	69	69	69	69
Diabetes Prevalence	69	69	69	69
Obesity Prevalence	69	69	69	69
Unemployment	69	69	69	69

15

STATE HEALTH RANKINGS - 2023 (CONT.)

SOURCE: COUNTY HEALTH RANKINGS RANK: 17TH

Health of Factors	Source (PR)	Source (MI)	Source (MI)
Health Expenditures	72	69	69
Acid Reflux	72	69	69
Allergies	72	69	69
Aspirin Use	72	69	69
Cholesterol	72	69	69
Diabetes	72	69	69
Depression	72	69	69
High Blood Pressure	72	69	69
Obesity	72	69	69
Smoking	72	69	69
Additional Health Characteristics (not included in overall ranking)	Source (PR)	Source (MI)	Source (MI)
Fractures	69	69	69
Heart Disease	69	69	69
Hypertension	69	69	69
Stroke	69	69	69

16

STATE HEALTH RANKINGS - 2023 (CONT.)

SOURCE: COUNTY HEALTH RANKINGS RANK: 17TH

Clinical Care	Source (PR)	Source (MI)	Source (MI)
Unmet	72	69	69
Primary Care Provider	72	69	69
Diabetes	72	69	69
High Blood Pressure	72	69	69
Preventable Hospital Days	72	69	69
Chronic Disease	72	69	69
Chronic Disease	72	69	69
Additional Clinical Care (not included in overall ranking)	Source (PR)	Source (MI)	Source (MI)
Unmet Needs	69	69	69
Unmet Needs	69	69	69
Other Patient Care Provider	69	69	69

17

STATE HEALTH RANKINGS - 2023 (CONT.)

SOURCE: COUNTY HEALTH RANKINGS RANK: 17TH

Social & Economic Factors	Source (PR)	Source (MI)	Source (MI)
High School Completion	72	69	69
Some College	72	69	69
Unemployment	72	69	69
Chronic Disease	72	69	69
Economic Inequality	72	69	69
Children in Single-Parent Households	72	69	69
Substance Use	72	69	69
Age-Related	72	69	69

18

STATE HEALTH RANKINGS - 2023 (CONT.)

SOURCE: COUNTY HEALTH RANKINGS RANK: 17TH

Physical Environment	Source (PR)	Source (MI)	Source (MI)
At-Risk for Prevalence	72	69	69
Chronic Disease	72	69	69
Chronic Disease	72	69	69
Chronic Disease	72	69	69
Chronic Disease	72	69	69
Additional Physical Environment (not included in overall ranking)	Source (PR)	Source (MI)	Source (MI)
Safe Water	69	69	69
Safe Water	69	69	69
Safe Water	69	69	69
Safe Water	69	69	69

19

PERCEPTIONS OF HEALTH & SERVICES - 2023

Needs Attention in the Communities	Percentage Selected
Mental illness (includes + 45.5%)	82%
Obesity	50%
Aging (Dementia)	50%
Teen health (drinking, abuse, pregnancy)	48%
Childcare services	46%
Drug/illegal substances	44%
Abuse/Violence	42%
Nutrition	41%
Chronic Disease	38%
Alcohol	28%

20

SOCIAL DETERMINATES OF HEALTH - 2023

- Food shortage (no= 91%)
- Utility shut off (cannot pay bill) (no=96.8%)
- Loss of housing (within 2 months) (no=96.8%)
- Childcare access (prevents working or school) (no=75.1%)
- Need healthcare, avoid because of cost (no=88.9%)
- Lack of transportation (to key appointments/work) (no=98%)
- Missed work because of transportation (no=95.6%)
- Reading ability (health materials or other) (no=97.6%)
- Safety at home (no=97.2%)

21

2023-2026 AREAS AND ACTIVITIES

22

OBJECTIVES AND STRATEGIES... THINK ABOUT

- Population's overall health
- Internal Hospital services
- Community and capacity building
- Community orientated education, wellness, and support

23

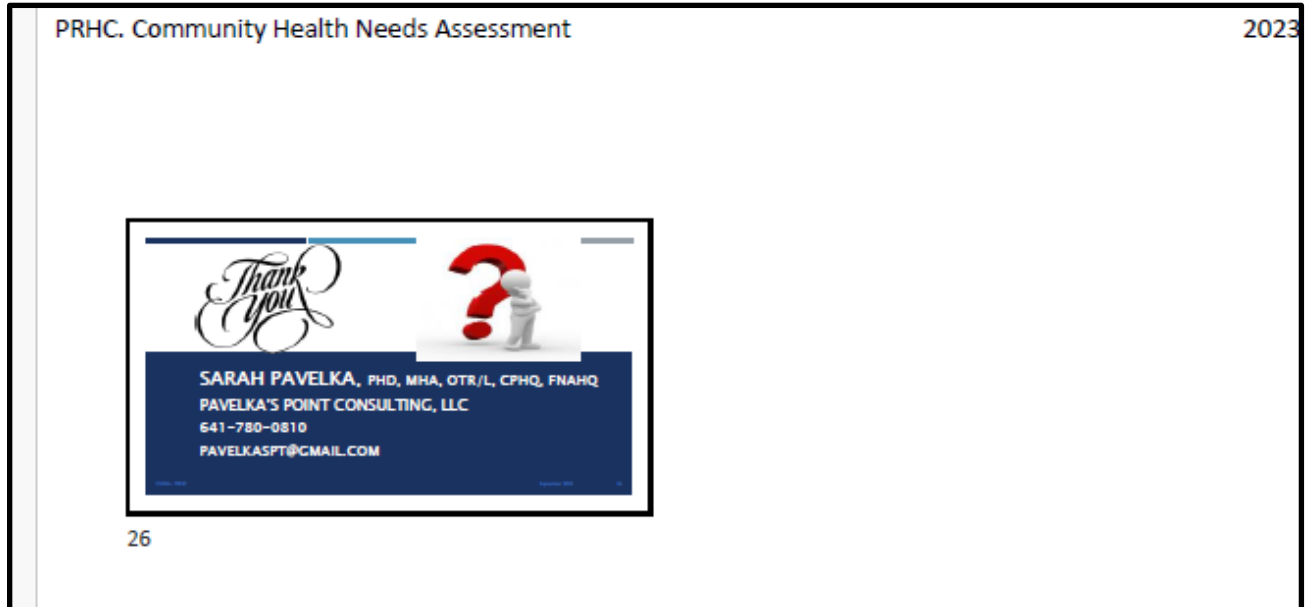
PRIORITIES AND ACTIONS

- Review current results and questions
- Define the current strengths for PRHC
 - What does it take to sustain these strengths?
- Determine top priorities and improvement areas
 - What needs to be improved or changed?
- Suggestions for actions

24

NEXT STEPS AND CONCLUSION

25



TOWN HALL ATTENDING KEY STAKEHOLDERS (ENGAGEMENT AND PRIORITIZATION)

The following is a list of community members (identified key stakeholders and interested community members) that were able to participate in the Town Hall meeting. In all there were 13 attendees at the October 2020 meeting.

Marion County CHA Town Hall Meeting – May 1, 2019		
Name	Organization - Title	Email
Kim Dorn	Marion Co Public Health	kdorn@marioncountyiowa.gov
Mike Morgan	community member	mpm.iowa@gmail.com
Kara Groenenboom	PRHC OT Department	kgroenenboom@pellahealth.org
Cheryl Garrels	PRHC	cgarrels@pellahealth.org
Cheryl Thomson	consumer	jethoml@mediacombb.net
Audrey Veldhouse	consumer	audreyveldhouse@gmail.com
Carl Loynanhan	consumer	berdel@icloud.com
Judy VanVeen	PRHC	jvanveen@pellahealth.org
Leslie Morris	PRHC	lmorris@pellahealth.org
Charmin Rucks	Oskey Herald	crucks@oskeyherald.com
Nancy Hamilton	Hearthstone-WesleyLife	nhamilton@wesleylife.org
Brandi Asplin	Hearthstone	basplin@Wesleylife.org
Andrea Barker	Pella Regional Health Center	abarker@pellahealth.org
Robert Kroese	Pella Regional Health Center	rkroese@pellahealth.org
Sarah Pavelka	Pavelka's Point Consulting	pavelkaspt@gmail.com

Town Hall Outcomes

The following were the outcomes from the September 2023 Town Hall meeting. These outcomes can be further explored in the Detailed Data/ Town Hall Meeting Outcomes. The outcomes were formulated from both primary data (survey) and secondary data (including County Health Rankings). The outcomes were compiled from large and small group round-robin brainstorming sections and then outlined into affinity groups. The following four affinity groups were seen in both meeting sessions.

Priorities	
1.	Mental Health: Increase the provided and breadth of services for Mental Health needs in the communities.
2.	Substance Abuse: Reduce the concern for and presence of substance abuse related health/safety issues.
3.	Workforce Shortages: Attract and retain employees and workers in/into the county for all sectors.
4.	Childcare Services/ Access: Communicate convene options for childcare access and services in the communities.
5.	Transportation services: Continue to address the needs of transportation services for emergency management and medical treatment needs for the community, including but not limited to the elderly in the communities.
6.	Health and Housing Stability Coalition for County Continue to work on services for the elderly in the community including housing, In-home support, Staffing, Day/acute services, and funding resources

Community Strategy Formulation and Action Planning

Planning for Improvement Strategies (CHA Steps 7 & 8)

To complete the final steps of the process, Marion County, Iowa (Pella Regional Health Center and Marion County Public Health) community leadership held meetings starting September 2023. During this step of the Community Health Assessment, Marion County, Iowa community leadership gathered all primary and secondary data, completed a relevance and achievable check, and determined 18 SMART goals (tactics) for their improvement of the community’s health. SMART goals are specific, measurable, achievable, relevant, and time-oriented action plans for improvements in the community.

This step also includes distribution of the CHA final report. Starting December 15, 2023, Pella Regional Health Center and Public Health department will be able to be distributed to the community. This report will be sent electronically to all participating and interested community partners for Marion County Public Health and Pella Regional Health Center. The report will be provided, along with prior reports, on the Pella Regional Health Center website (<https://www.pellahealth.org/>). Paper copies will be distributed to interested parties as requested to Pella Regional Health Center.

Community Health Improvement Plan (CHIP) & Tactics – Marion County Public Health						
11/1/2023 to 12/31/2028						
Health Areas of Need (Goals)	"Specific Actions" to address community health need (Tactics)	LEAD	Partners	Timeframe	Performance Indicators: Data Sources/ Collection Timing	
1 Mental Health						
Assess and support depth and breadth of services for Mental Health needs in the communities	a	Evaluate the increase providers and access	Pella Regional Health Center (PRHC)	PRHC	Year 3-5	Availability of mental health resources in the community including patient treatment options
	b	Assess employment opportunities for providers		PRHC	Year 3-5	
	c	Discover options for funding reimbursement for shortage – barrier for services		PRHC	TBD	
	d	Improvement of community response, including increased attendance at mental health trainings for EMS, LEOs; co-responder models, Use of Mobile Crisis, ASIST, wellness and resilience training for emergency responders.	Heart of Iowa Mental Health Region, MCPHD	PRHC, KHC, EMS,	Year 1	Increased participation in mental health related trainings by community partners
	e	Access to transportation to and from services in other communities	(TBD)	HIRTA	Year 2-3	Availability at certain times or days, even limited at first
	f	Provide support and training in community and personal resilience	MCPHD	MCPHD	Year 1-2	FB posts, support community Education offerings
Progress Notes:						
2 Substance Abuse						
Assess and support depth and breadth of services for substance use and abuse in the communities	a	Complete a comprehensive substance abuse assessment and create a sustainable plan for substance abuse prevention, treatment, and support in Marion County	MCPH	MCPH, Marion County Law Enforcement, MC Attorney office, PRHC, KHC, community partners	Year 1-2	Data and assessment of data regarding SA issues in Marion County
	b	Create educational tools regarding the outcome of the substance abuse assessment and educate the community regarding the issue.	MCPH		Year 2-3	Power point and presentation outline re: SA in Marion County
	c	Increase access to substance abuse services	MCPHD		Year 4-5	As determined by assessment and plan
	d	Develop a plan for appropriate use of the opioid settlement dollars	MCPHD		MCPHD, MCSO, MC Attorney office, local	Year 1-2

Community Health Improvement Plan (CHIP) & Tactics – Marion County Public Health						
11/1/2023 to 12/31/2028						
Health Areas of Need (Goals)		"Specific Actions" to address community health need (Tactics)	LEAD	Partners	Timeframe	Performance Indicators: Data Sources/ Collection Timing
				partners		
	e	Implement agreed upon plan for use of opioid settlement dollars	MCPHD	MCPHD, MCSO, MC Attorney, local partners	Year 3-5	Implementation of Opioid Settlement plan
	f	Evaluate financial need to ameliorate substance abuse issues in Marion County	MCPHD	MCPHD, MC BOS, MC BOH, MC Attorney, MCSO, MC Auditor	Year 1-2	Development of plan and financial projections for SA plan
	g	Develop plan for management of county allocated SA dollars	MCPHD	MCPHD, MC BOS, MC BOH, MC Attorney, MCSO, MC Auditor	3-5	Create plan for management of allocated dollars
		Progress Notes:				
3	EMS ESSENTIAL					
Provide data and support to the EMS Advisory and BOS	a	EMS Essential: Provide support for meetings, and support for assessment of financial and operational options for Advisory and BOS consideration	EMS Advisory	EMS Advisory, MCPHD, EMS Representatives	Year 1-5	Provide support
	b	EMS Essential: Collect and present EMS data to Advisory & BOS for evaluation and decision making	EMS Advisory		Year 1-5	Provide support
	c	EMS Essential: Provide financial forecasting for options as requested	EMS Advisory		Year 1-5	Provide support
		Progress Notes:				
4	communicable disease control					
	a	Increase immunization rates for communicable disease by providing outreach to parents of children in childcare and schools to increase compliance with required and recommended vaccinations	MCPHD	MCPHD, American Home Finding (MCAH, WIC)	Year 1-5	Increased compliance with required immunization rates

Community Health Improvement Plan (CHIP) & Tactics – Marion County Public Health						
11/1/2023 to 12/31/2028						
Health Areas of Need (Goals)	"Specific Actions" to address community health need (Tactics)	LEAD	Partners	Timeframe	Performance Indicators: Data Sources/ Collection Timing	
Decrease the spread of communicable disease	a	Encourage all immunization providers to complete recall activities or to reach out to public health to create an outreach plan	MCPHD	MCPHD and immunization providers	Year 1-5	Increase compliance with required immunization rates
	b	Promote: cover your cough, wash your hands, and stay home when you are sick; encourage early notification of illness concern through increased communication with school nurses	MCPHD	MCPHD and school districts	Year 1-5	Increase compliance with required immunization rates
	c	Create better communication pathways with local manufacturing and schools as related to ESL employees and students from other cultures and communication styles regarding disease prevention.	MCPHD	MCPHD and local manufacturing companies	Year 1-5	Routine communication with manufacturing and school systems
	d	Provide posters for hand washing, cover cough to schools to post in rest rooms, areas they choose	MCPHD	MCPHD & School systems	Year 2	Decrease illness in schools; fewer dates of 10% illness reporting
Progress Notes:						
5 Supportive services for Elderly and Disabled persons in Marion County						
Services for the medically needy and Elderly living in their homes in the community	a	Develop, implement, and sustain a caregiver support group	MCPHD	MCPHD, Elder and Disabled Coalition, Alzheimer's Association, local home care agencies	Year 1-5	Establish ongoing monthly support group at MCPHD
	b	Establish and maintain "Dementia Friends" sessions in Marion County, increasing awareness, reducing stigma, and increase understanding of the challenges of people living at home with dementia and their families				Increase participation by 15% year over year from baseline number of participants in support group
	c	Investigate and problem solve for improvement for funding resources				Hold Dementia Friends training session at least quarterly in Marion County
	d	Increase options for home-based care services				Legislative contact at least annually to educate regarding lack of options for chronically ill/dementia/disabled living at home
			MCPHD	MCPHD, Elder and Disabled Coalition, Alzheimer's Association, local home	1-5	

Community Health Improvement Plan (CHIP) & Tactics – Marion County Public Health						
11/1/2023 to 12/31/2028						
Health Areas of Need (Goals)	"Specific Actions" to address community health need (Tactics)	LEAD	Partners	Timeframe	Performance Indicators: Data Sources/ Collection Timing	
			care agencies			
Progress Notes:						
6	Decrease the number of falls in the elderly population of Marion County					
	a	Gather data regarding falls in Marion County	MCPHD	MCPH, EMS, hospitals, clinics, home cares, community care coordinator	Year 1	Gather and evaluate data Establish coalition
	b	Establish a falls prevention/reduction program at MCPHD			Year 1-2	create, launch, promote educational programs around fall prevention
	c	Plan and develop initiatives fall prevention	Coalition		Year 1-5	Work with current fall prevention programs, link frequent fallers to solutions.
Progress Notes:						
&	Community and Personal Preparation for ramifications of political and economic instability and uncontrolled inflation					
Prepare for continued inflation, economic hardship	a	Provide information regarding community and family preparation for long term public health and economic emergencies in an environment lacking safety net resources	MCPHD	MCPH	Year 1-5	Provide information/education about planning for basic necessities, budgeting, self-reliance and self-sustainability.
Progress Notes:						

PRIOR ASSESSMENT ACTION PLANS

During the years 2020 to 2023, Pella Regional Health Center, Marion County Public Health, and Community groups along with key community partners improved five (5) strategic tactics for the improvement of the community’s health. For details of the 2020 to 2023 Community Health Assessment tactical (action) planning, please see the details in the Details Data section of the report. Actions for improvements included but not limited to increasing the number of qualified healthcare workers seeking employment; mental health access, diagnosis, and placement; increasing the Medicaid reimbursement; substance abuse service awareness, access, and support; and community health education for wellness, chronic disease screenings.

There were slight improvements in three (3) of the six (6) areas. The improvements did not move the issues to “not a problem;” however, did move the issues to “Somewhat of a Problem ” in a majority of the participants taking the survey and during Town Hall prioritization (CHA steps 5 and 6). In the chart below was provided to the participants at the Town Hall meeting (September 2023) and signifies that

retaining employees, Mental Health Services, Substance Use/Abuse, Teen Health still remains a concern for the survey participants.

IMPROVEMENTS – 2019-2023			
<small>(NOTE: % MAY NOT ADD UP TO 100% - ALMOST ALL QUESTIONS WERE OPTIONAL)</small>			
Priority Area	Not a Problem	Somewhat a Problem	Still a Problem
Provide depth and breadth of service for mental health	5%	28%	61%
Address childcare services within the communities	38%	38%	10%
Attract and retain healthcare workers	4%	42%	48%
Services for the elderly in the community	25%	50%	25%
Substance abuse prevention and access to services	2%	43%	45%
Service and access for teen health needs	25%	25%	48%

CHNA - PRHC September 2023 12

Evaluation of Progress on Key Priorities and Strategic Alignment (CHA Step 9)

Pella Regional Health Center and Marion County Public Health departments will continually monitor the action plans for changes and adjustments as key findings present within three years. This assessment and findings will be incorporated into future strategic planning efforts and include a systematic cycle of improvement. Improvements will be completed using performance excellence tools, including but not limited to the Plan, Do, Study, Act improvement cycle and will include as many community partners, agencies, and interested individuals as possible for best outcomes and sustainability.

COMMUNITY (SERVICE AREA) HEALTH STATUS

Primary Research Findings

In summer through fall 2023, Pella Regional Health Center sponsored/conducted primary research (survey) to all residents residing or receiving services in their primary service area, with 420 individual replies.

REPLIES BY ZIP

Marion County CHA 2023 Sample by PSA Zips			
#	Zips	County	Returns (% of Total)
1	Pella, IA- 50219	MARION	55.8%
2	Knoxville, IA – 50138	MARION	16.5%
3	Oskaloosa, IA - 52577	MAHASKA	4.2%
4	Otley, IA - 50214	JASPER	2.7%
5	Leighton, IA – 50143	JASPER	1.3%
6	New Sharon, IA – 50207	JASPER	1.9%

7	Prairie City, IA – 50228	JASPER	1.5%
8	Sully, IA – 50251	JASPER	1.1%

OVERALL QUALITY OF SERVICES IN THE COMMUNITY (SERVICE AREA)

Community Healthcare Needs Assessment 2023					
In general, how would you rate the overall quality of the healthcare delivered to your community?	Pella PSA (2023) N=260	Pella PSA (2020) N=420	Pella PSA (2017) N=219	Pella PSA (2014) N=225	Trend
Top 2 Boxes	84.2%	89.7%	91.8%	85.9%	
Very Good	110 (42.3%)	215 (51.2%)	94 (42.9%)	97 (42.7%)	
Good	109 (41.9%)	162 (38.5%)	107 (48.8%)	98 (43.2%)	
Fair	37 (14.2%)	35 (8.3%)	15 (6.8%)	27 (11.9%)	
Poor	4 (1.5%)	8 (1.9%)	2 (<1%)	5 (2.2%)	
Very Poor	0%	0 (0.0%)	1 (<1%)	0 (0.0%)	
Bottom 2 Boxes	1.5%	1.9%	1.4%	2.2%	

RATING OF HEALTH SERVICES

Community Healthcare Needs Assessment 2023					
How would you rate the following health services?	Poor / Very Poor %				Trend
	Pella PSA (2023) N=260	Pella PSA (2020) N=420	Pella PSA (2017) N=219	Pella PSA (2014) N=225	
Ambulance Service	8.4%	<1.0%	5.5%	1.3%	
Childcare	6.1%	2.4%	17.5%	6.8%	
Chiropractor	1.1%	<1.0%	5.9%	2.9%	
Dentists	2.6%	<1.0%	6.4%	5.1%	
Emergency Room	6.9%	3.3%	11.2%	5.2%	
Eye Doctor / Optometrist	1.1%	1.1%	7.0%	4.3%	
Family Planning Services	11.9%	5.5%	12.4%	15.3%	
Home Health	9.6%	2.3%	7.9%	3.1%	
Hospice	1.5%	<1.0%	4.1%	0.7%	
Hospital Inpatient Services	3.8%	2.8%	4.8%	2.3%	
Mental Health Services	28.1%	27.8%	11.3%	34.4%	
Nursing Home	8.8%	3.8%	14.8%	14.2%	
Outpatient Services (lab, radiology, etc.)	5.3%	3.5%	4.9%	3.7%	

Pharmacy	1.1%	1.2%	5.0%	2.6%	
Primary Care Doctors	2.3%	5.3%	10.5%	2.0%	
Public Health Department	7.3%	3.3%	28.5%	4.5%	
School Nurse	2.3%	<1.0%	10.7%	1.9%	
Specialist Physician care	8.1%	5.7%	6.9%	4.7%	
Teen Health (drinking, abuse, safety, pregnancy)	20%	14.1%	NR	NR	

CAUSES OF DISEASE OR DISABILITY IN THE COMMUNITY

Community Healthcare Needs Assessment 2023					
In your opinion, how much of a problem are the following causes of diseases or disability in your community?	Major Problem %				
	Pella PSA (2023) N=260	Pella PSA (2020) N=420	Pella PSA (2017) N=219	Pella PSA (2014) N=225	Trend
Obesity	59.2%	49.5%	--	66.3%	
Mental Disorders	58.4%	46.9%	--	47.1%	
Diabetes	46.1%	45.9%	--	59.2%	
Substance Abuse	44.2%	41.4%	--	51.5%	
Drug Abuse	40.3%	39.0%	--	--	
Cancer	41.1%	37.1%		59.6%	
Heart Disease	39.2%	37.1%	--	48.6%	
Suicide	28.8%	23.0%	--	14.6%	
Trauma	20%	13.5%	--	10.1%	
Stroke	17.6%	14.7%	--	19.1%	
Respiratory Disease	12.3%	14.5%	--	21.4%	
Sexually Transmitted Diseases	7.6%	9.2%	--	22.9%	
Pneumonia / Flu	7.6%	8.8%	--	13.5%	

HEALTH NEEDS BY AGE

Community Healthcare Needs Assessment 2023	
	Poor / Very Poor %

How well do you feel our local health care providers are doing in addressing the health needs of the following age groups?	Pella PSA (2023) N=260	Pella PSA (2020) N=420	Pella PSA (2017) N=219	Pella PSA (2014) N=225	Trend
Infants	3.0%	<1.0%	NR	3.3%	
Age 1 - 12	4.2%	<1.0%	--	2.5%	
Age 13 -17	5.7%	3.0%	--	1.3%	
Age 18 - 25	5.0%	4.2%	--	2.4%	
Age 26-44	5.0%	2.8%	--	--	
Age 45 - 64	7.6%	3.0%	--	3.4%	
Age 65 - 84	8.8%	3.8%	--	5.7%	
Over 85	6.9%	5.7%	--	8.2%	

HEALTH SERVICES OUTSIDE OF THE COUNTY

Community Health Assessment 2023					
Over the past 2 years, did you or your household receive health care services outside of your county?	Pella PSA (2023) N=260	Pella PSA (2020) N=420	Pella PSA (2017) N=219	Pella PSA (2014) N=225	Trend
Yes	60.8%	57.1%	69.1%	61.4%	
No	39.2%	42.9%	23.7%	38.6%	
Totals	100%	100%	8.2.8%	100%	
Please list the health care services you or your household member(s) have received outside of your county: Number of replied	Pella PSA (2023) N=260	Pella PSA (2020) N=420	Pella PSA (2017) N=219	Pella PSA (2014) N=225	
Allergy	1	2	--	--	
Cancer/Oncology	1	5	--	--	
Cardiology	6	14	--	--	
Dental	3	4	--	--	
Dermatology	4	5	--	--	
Emergency Room	7	4	--	--	
ENT	3	9	--	--	
Eye / Surgery	6	3	--	--	
Heart Disease	4	5	--	--	
Mental Health	6	4	--	--	

Neurology	6	5	--	--	
OB/GYN	5	2	--	--	
Orthopedics Surgery	11	15	--	--	
Pain management	3	2	--	--	
Pediatric	8	8	--	--	
Podiatry	2	2	--	--	
Specialty providers	8	11	--	--	
Surgery	12	13	--	--	
If offered, would you have received the services locally?		% of Replies	--	--	
Yes	52.3%	48.1%	--	--	
Maybe	29.7%	31.1%	--	--	
No	18.1%	20.9%	--	--	

IMPROVEMENT OF SERVICES

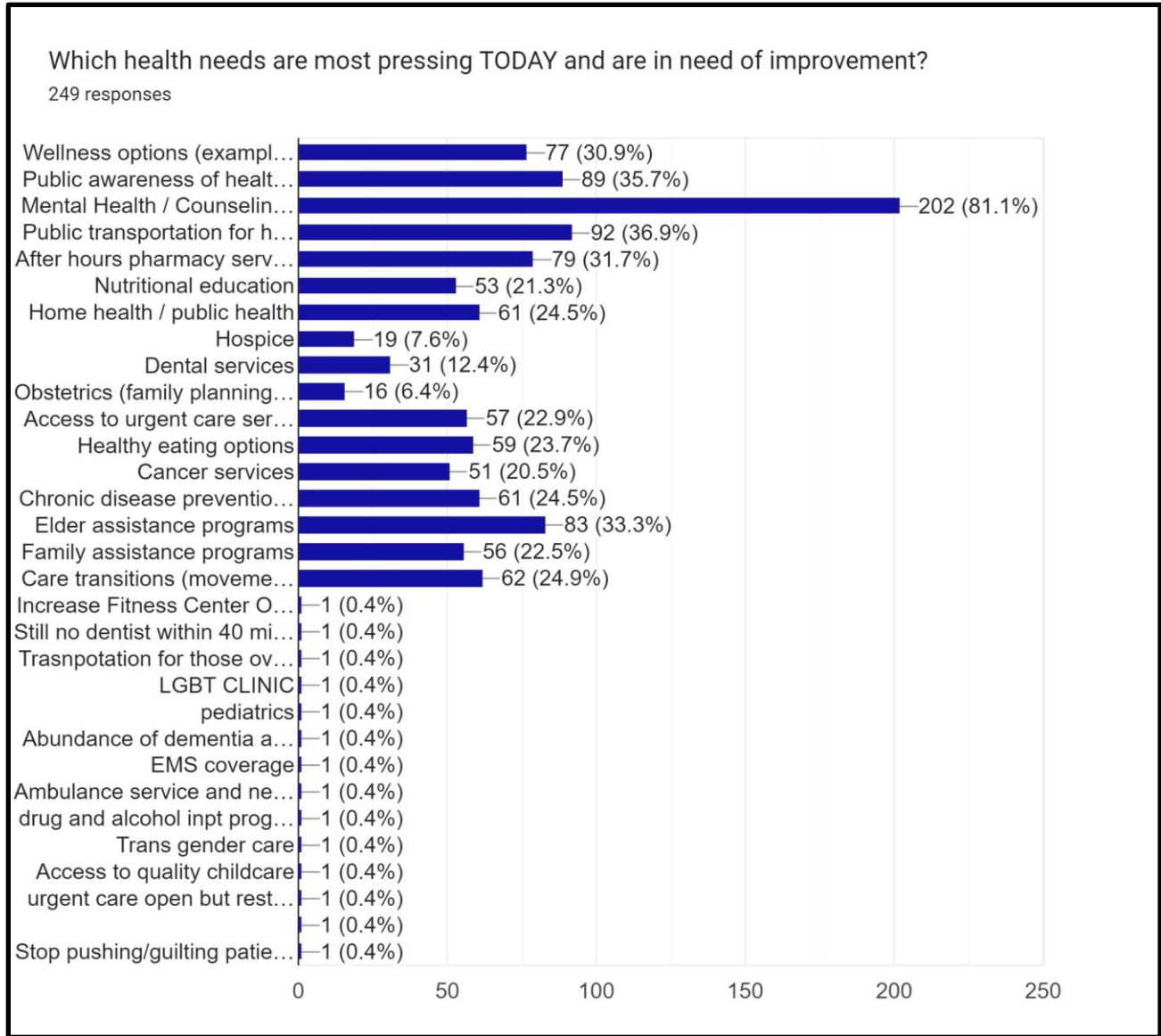
Community Health Assessment 2023			
Are there health care services in your community or neighborhood that you feel need to be improved and or changed? (Please be specific)			
Rank	Services	# Replies	% of Replies
1	Mental Health services	21	8.0%
2	Access to services (Clinic services)	7	2.6%
3	Ambulance services	6	2.3%
3	Emergency Room/Urgent Care	6	2.3%
5	Pediatrics	5	1.9%
6	Substance Use treatment	3	1.1%
6	Elderly services in community	3	1.1%
8	Oncology	2	0.7%
8	OB/Women’s Health	2	0.7%
8	Public Health resources	2	0.7%
11	Transportation	1	0.3%
11	Transgender services	1	0.3%

THREE YEAR ACTION PLAN IMPROVEMENTS

Community Health Assessments 2023			
Please rate the following areas for your community.	Not a Problem	Somewhat of a Problem	Still a Problem
Provide depth and breadth of service for mental health	5%	28%	61%
Address childcare services within the communities	38%	38%	10%
Attract and retain healthcare workers	4%	42%	48%
Services for the elderly in the community	25%	50%	25%
Substance abuse prevention and access to services	2%	43%	45%
Service and access for teen health needs	25%	25%	48%
Provide depth and breadth of service for mental health	5%	28%	61%
Address childcare services within the communities	38%	38%	10%

PRESSING ISSUES FOR TODAY'S IMPROVEMENTS

Community Health Assessment 2023			
Which health needs are most pressing TODAY and are in need of improvement?			
Rank	Health Needs	# Replies	% of Total Replies
1	Mental Health/Counseling	202	81.1%
2	Public Transportation	92	36.9%
3	Public awareness of services	89	35.7%
4	Elderly assistance	83	33.3%
5	After hours pharmacy	79	31.7%
6	Wellness options	77	30.9%
7	Care transitions	62	24.9%
8	Chronic disease prevention	61	24.5%
9	Home Health/Public Health	61	24.5%
10	Healthy eating options	59	23.7%
(Must consider that the same people who voted for multiple categories)			



RATING OF SERVICES FOR COMMUNITY

Community Health Assessment 2023								
How would you rate each of the following in your community?	Very Poor	Poor	Fair	Good	Very Good	Not Aware/ Not Applicable	Very Poor + Poor	Good + Very Good
Access to services	11(4.2%)	35 (13.5%)	71 (27.3%)	93 (35.7%)	30 (11.5%)	13 (5.0%)	16.5%	47.2%
Alcohol use and treatment programs	24 (9.2%)	52 (20.0%)	72 (27.6%)	28 (3.1%)	2 (0.7%)	70 (29.9%)	29.2%	3.8%

Caregiver training programs	8 (3.1%)	34 (13.1%)	78 (30.0%)	46 (17.6%)	9 (3.5%)	77 (29.6%)	16.2%	21.1%
Drug abuse programs	21 (8.1%)	46 (17.7%)	79 (30.4%)	26 (10%)	2 (0.8%)	75 (28.8%)	25.8%	10.8%
Early childhood development programs	6 (2.3%)	19 (7.3%)	75 (28.8%)	80 (30.7%)	19 (7.3%)	52 (20%)	9.6%	38.0%
Emergency preparedness	0 (0%)	11(4.2%)	43 (16.5%)	132 (50.7%)	47 (18.1%)	17 (6.5%)	4.2%	68.8%
Food and nutrition services (WIC programs)	4 (1.5%)	16 (6.2%)	56 (21.5%)	99 (38.1%)	17 (6.3%)	59 (66.7%)	7.7%	44.4%
Health screenings	3 (1.2%)	20 (7.6%)	67 (25.7%)	107 (41.1%)	29 (11.1%)	26 (10%)	8.8%	52.2%
Obesity prevention and treatment	15 (5.7%)	38 (14.6%)	96 (36.9%)	31 (11.9%)	2 (0.7%)	67 (25.7%)	20.3%	12.6%
Prenatal / child health programs	6 (2.3%)	15 (5.7%)	54 (20.7%)	101 (38.8%)	22 (8.4%)	52 (20%)	8.0%	47.2%
Prevention of falls	3 (1.2%)	23 (8.8%)	75 (28.8%)	57 (21.9%)	5 (1.9%)	87 (33.5%)	10.0%	23.8%
Reduction of opiate/narcotic use	22 (8.4%)	50 (19.2%)	69 (26.5%)	21 (8.1%)	3 (1.2%)	82 (31.5%)	27.6%	9.3%
Sexually transmitted disease testing	5 (1.9%)	27 (10.3%)	69 (26.5%)	49 (18.8%)	10 (3.8%)	87 (33.5%)	12.2%	22.6%
Spiritual health support	5 (1.9%)	10 (3.8%)	34 (13.1%)	114 (43.8%)	58 (22.3%)	32 (12.3%)	5.7%	66.1%
Tobacco prevention / cessation programs	11(4.2%)	25 (9.6%)	76 (39.2%)	49 (18.8%)	11(4.2%)	76 (39.2%)	13.8%	23.0%
Transportation (bus) services	32 (12.3%)	51 (19.6%)	70 (26.9%)	60 (23.1%)	11(4.2%)	26 (10%)	31.9%	27.3%
Violence prevention	19 (7.3%)	42 (16.1%)	68 (26.1%)	24 (9.2%)	4 (1.5%)	91 (35%)	23.4%	10.7%
Women's wellness programs	13 (5%)	27 (10.3%)	78 (30%)	83 (31.9%)	16 (6.2%)	33 (12.6%)	15.3%	38.1%

Personal Health Needs: Survey Results

PERSONAL HEALTH NEEDS: HEALTH DESCRIPTION

Community Healthcare Needs Assessment 2023					
In general, how would you best describe your health? (Choose one)	Pella PSA (2023) N=260	Pella PSA (2020) N=420	Pella PSA (2017) N=219	Pella PSA (2014) N=225	Trend
Top 2 Boxes	78.8%	89.8%	91.8%	81.7%	
Very Good	55 (21.1%)	215 (51.2%)	94	57 (22%)	
Good	150 (57.7%)	162 (38.6%)	107	120 (59.7%)	
Fair	43 (16.5%)	35 (8.3%)	15	30 (15.9%)	
Poor	11 (4.2%)	8 (1.9%)	2	5 (1.6%)	
Very Poor	0 (0.0%)	0 (0.0%)	1	1 (0.8%)	
Bottom 2 Boxes	4.2%	1.9%	1.4%	2.4%	

PERSONAL HEALTH NEEDS: SOCIAL DETERMINANTS OF HEALTH

Community Health Assessment 2023			
Social Determinants of Health – questions for need:	No %	Yes %	Total %
In the last 12 months, did you ever eat less than you felt you should because there wasn't enough money for food?	91%	9%	100%
In the last 12 months, has your utility company shut off your service for not paying your bills?	96.8%	0.0%	96.8%
Are you worried that in the next 2 months, you may not have housing?	96.8%	1.5%	98.3%
Do problems getting childcare make it difficult for you to work or study? (leave blank if you do not have children)	75.1%	7.3%	82.4%
In the last 12 months, have you needed to see a doctor, but could not because of cost?	88.9%	9.2%	98.1%
In the last 12 months, have you ever had to go without health care because you didn't have a way to get there?	98%	1.9%	99.9%
Do you ever need help reading hospital materials?	97.6%	1.5%	99.1%
Are you afraid you might be hurt in your apartment building or house?	97.2%	1.9%	99.1%
Have you ever missed work or lost a job due to unreliable transportation?	98%	1.5%	99.5%

PERSONAL HEALTH NEEDS: OVERALL HEALTH – 2 YEAR COMPARISON

Community Healthcare Needs Assessment 2023					
Compared to a year ago, how would you rate your overall health in general now?	Pella PSA (2023) N=260	Pella PSA (2020) N=420	Pella PSA (2017) N=219	Pella PSA (2014) N=225	Trend
Much better than a year ago	36 (13.8%)	58 (13.8%)	--	21 (9.9%)	
About the same	202 (77.6%)	348 (82.8%)	--	184 (86.8%)	
Much Worse than a year ago	21 (8.1%)	13 (3.1%)	--	7 (3.3%)	

PERSONAL HEALTH NEEDS: USE OF PRIMARY CARE PROVIDER

Community Healthcare Needs Assessment 2023					
Does your household have a provider you use for Primary Care?	Pella PSA (2023) N=260	Pella PSA (2020) N=420	Pella PSA (2017) N=219	Pella PSA (2014) N=225	Trend
Yes (See detail Section V)	96.9%	95.7%	NR	NR	
No	3.1%	4.3%	--	--	
Totals	100%	100%	--	100%	

PERSONAL HEALTH NEEDS: PHYSICAL IN THE LAST 12 MONTHS

Community Healthcare Needs Assessment 2023					
Have you had a physical in the past 12 months?	Pella PSA (2023) N=260	Pella PSA (2020) N=420	Pella PSA (2017) N=219	Pella PSA (2014) N=225	Trend
Yes	89.5%	88.5%	NR	75.7%	
No	10.5%	11.5%	--	24.3%	
Totals	100%	100%	--	100.0%	
If you have not had a physical, please provide the specific reason:	# of Replies	# of Replies			
No need/Haven't Thought About It/Feel Healthy	3	13			
No time/Can't schedule/Can't miss work	4	10			
COVID 19	1	12			
Need to make time/don't think about it	3	8			
New to community	0	2			

Cost of	6	-			
Provider availability	4	-			

PERSONAL HEALTH NEEDS: HEALTH PRACTICES

Community Healthcare Needs Assessment 2023					
Do you follow these health practices?	Pella PSA (2023) N=260	Pella PSA (2020) N=420	Pella PSA (2017) N=219	Pella PSA (2014) N=225	Trend
If over 50, have you had a colonoscopy?	139 (53.4%)	217 (51.6%)	NR	108 (65.6%)	
If male over 50, do you have annual prostate exams?	37/92 (40.2%)	49 /71 (69.0%)	--	32 (59.9%)	
If female over 40, do you have annual mammograms?	152/180 (84.4%)	239/347 (68.8%)	--	112 (78.9%)	
If female, do you have a pap smear every other year?	128/180 (71.1%)	208/347 (59.9%)	--	127 (77.2%)	
Do you get 2.5 hours a week of moderately intense physical activity?	158 (60.7%)	277 (65.9%)	--	139 (60.4%)	

PERSONAL HEALTH NEEDS: HEALTH PRACTICES

Community Health Assessment 2023					
Please complete the sentence below - "Are you..."	No %	N/A %	Yes %	Pella PSA ("Yes" % in 2020)	Pella PSA ("Yes" % 2014)
Eating right (Daily, 5 servings of fruits, vegetables, wheat)	47.3%	0.0%	51.9%	55.9%	58.4%
Using tobacco products weekly	85.7%	8.0%	5.3%	4.5%	10.8%
Exercising 2-3 times weekly	32.6%	1.5%	64.6%	70.7%	59.5%
Consuming alcohol (more than 1 drink daily)	90%	3.4%	6.1%	6.9%	3.6%
Receiving an annual flu shot	20.4%	0.0%	78.1%	89.0%	75%
Been without a place to stay for multiple nights (homeless)	95%	3.8%	0.0%	0.0%	--
Have difficulty with employment due to transportation, education, skills, childcare, scheduling, etc.)	86.9%	7.6%	5.0%	8.5%	--

Primary Data (Survey) Demographics of Participants 2023

AGE

What is your age?	# of Replies	% of Total
17 and under	0	0%
18 to 25	6	2.3%
26 to 44	77	29.7%
44 to 64	112	43.2%
65 to 84	62	23.9%
85 and over	2	0.8%
Total	259	99.6%

GENDER

What is your gender?	# of Replies	% of Total
Female	214	83.6%
Male	36	14.1%
Prefer not to say	6	2.3%
Total	256	98.1%

IDENTITY

How would you identify yourself?	# of Replies	% of Total
Indian/ Native Alaskan	0	0%
Multicultural/ Multiracial	2	0.8%
Asian / Pacific Islander	2	0.8%
Caucasian / White	248	97.3%
Latino / Hispanic	1	0.4%
African American / Black	0	0%
Christian/ Human	2	0.8%
Total		

HOUSEHOLD

How would you describe your household? (Please select all that apply)	# of Replies	% of Total
Married	171	66.3%
Married; Parent / Guardian with children at home	56	21.7%
Married; children no longer at home	49	19%
Single	25	9.7%
Divorced	16	6.2%
Widowed	8	3.1%
Living with adult child	1	0.4%

Married with aging parents at home	1	0.4%
Domestic partner	1	0.4%
(blank)	2	0.8%

HEALTH CARE FACILITY

What type of healthcare facility do you use when not feeling well or sick?	# of Replies	% of Total
Clinic/Doctor's office	165	64%
Urgent care/Acute Care	76	29.5%
Don't seek care/medical treatment	4	1.6%
Emergency Department	4	1.6%
Urgent Care	1	0.4%
Telehealth / virtual visits	1	0.4%
Public Health	1	0.4%
Portal Email	1	0.4%

MEDICAL INFORMATION

Where do you get most of your medical information?	# of Replies	% of Total
Doctor	177	69.4%
Internet	65	25.5%
Family	4	1.6%
Social Media/Television/ Radio	6	2.4%
Insurance Company	1	0.4%
Friend(s)	2	0.8%

INSURANCE

What type of health insurance coverage is your primary plan?	# of Replies	% of Total
Partially covered by employer (you and employer share cost)	140	54.1%
Covered by employer (employer pays total cost)	40	15.4%
Private Insurance you purchased	18	6.9%
Medicare	53	20.5%
Medicaid	6	2.3%
No coverage (uninsured)	2	0.8%

INVOLVEMENT IN COMMUNITY

For reporting purposes, are you involved in or are you a... (Please check all that apply)	# of Replies	% of Total
Hospital or Clinic employee	99	41.6%
Consumer of healthcare services	73	30.7%

Parent / Caregiver	72	30.3%
Healthcare Provider	50	21%
Education official / Teacher	19	8%
Civic club member	17	7.1%
Farmer / Rancher	7	2.9%
Laborer	5	2.1%
Business / Merchant	6	2.5%
Board member (local health organization)	7	2.9%
Retired	11	4.6%
Health Department	11	4.6%
Clergy / Congregational Leader	6	2.5%
Veteran	5	2.1%
College / University student	5	2.1%
Law enforcement	1	0.4%
Economic Development/Government	3	1.3%
Self-employed (other)	10	3.8%
Construction / Housing / Builder	2	0.8%
Student (high school)	0	0.0%
Insurance industry	4	1.7%

Secondary Research Findings 2023

OVERALL STATE HEALTH RANKINGS

#	IA Rank of 99 Counties	Definitions	Pella PSA (2023) N=260	Pella PSA (2020) N=420	Pella PSA (2017) N=219	TREND
1	Physical Environment (56th)	Severe Housing Problems	10%	11%	10%	
2	Health Factors (9th)	Adult Smoking Food Environment Index	16% 9.0	15% 8.5	16% 8.3	
3	Clinical Care (3rd)	Uninsured Flu Vaccinations	4% 64%	4% 54%	6% NA	
4	Social & Economic Factors (8th)	Children in Poverty Injury Deaths	9% 67	10% 64	11% 53	
5	Health Outcomes (17th)	Poor or Fair Health	10%	13%	11%	
6	Health Behaviors (12th)	Adult Obesity Physical Inactivity Teen Births	34% 21% 12	34% 26% 12	33% 24% 17	
7	Quality of Life (12th)	Poor Physical Health Days Poor Mental Health Days	2.6 4.0	3.0 3.3	2.9 3.1	

8	Length of Life (29th)	Life Expectancy	78.9	79.2	NA	
http://www.countyhealthrankings.org, released 2023						

DEMOGRAPHIC DETAILS: POPULATION AGE, GENDER, ETHNIC AFFILIATION (1A)

	Population Indicator	Pella PSA (2023) N=260	Pella PSA (2020) N=420	Pella PSA (2017) N=219	Trend	State of Iowa
1a	Population, Estimate (2022)	33,642	33,407 (2018)	33,189 (2016)		3,200,517
1a	Population, 2010	33,309	33,309	33,309		3,190,369
1a	Persons Under 5 years, Percent	5.4%	5.8%	5.9%		5.9%
1a	Persons Under 18 years, Percent	23.1%	23.6%	24.1%		23.1%
1a	Persons 65 Years and Over, Percent	19.5%	17.8%	17.2%		17.7%
1a	Female Persons, Percent	49.5%	50.0%	50.1%		49.8%
1a	White Alone, Percent	95.9%	94.4%	96.3%		90.1%
1a	Black or African American Alone, Percent	1.0%	0.8%	0.9%		4.3%
1a	Hispanic or Latino, Percent	2.4%	2.0%	1.9%		6.9%
1a	Foreign Born Persons, Percent	2.2%	3.6%	2.6%		5.5%
1a	Language Other than English Spoken at Home, Percent, Age 5+	3.3%	<1.0%	3.8%		8.6%

Source: US Census – Quick Facts

<https://www.census.gov/quickfacts/fact/table/Marioncountyiowa,ia/PST045218>

DEMOGRAPHIC DETAILS: POPULATION STATUS (1B)

	Population Indicator	Pella PSA (2023) N=260	Pella PSA (2020) N=420	Pella PSA (2017) N=219	Pella PSA (2014) N=225	Trend	State of Iowa
1b	Veterans	1,986	370	271 (2011-16)	248 (2010)		174,514
1b	Living in Same House 1 Year & Over, Percent	81.1%	74.8%	--	84.3% (2009)		86.0%
1b	Persons per Square Mile	60.3	60.2	60.1 (2010)	60.1 (2009)		57.1
1b	Children in Single-Parent Households, percent (County Health Rankings)	16%	22%	20%	20%		21%
1b	Poverty Levels, (Iowa Health Fact Book)	8.6%	9.2%	9.2%	9.1% (2007)		Rank 81
1b	Food Insecurity (County Health Rankings)	7%	10%	11%	11%		7%
1b	People 65+ with Low Access to a Grocery Store, (US Dept of Agriculture- Food Atlas)		2.4% (2015)	2.2%	2.5%		3.6%

1b	Voter Turnout, percent (Iowa Secretary of State)		61.28% (2018)		NA		49.63%
----	--	--	---------------	--	----	--	--------

Source: Unless stated source: US Census – Quick Facts

[U.S. Census Bureau QuickFacts: Davis County, Iowa; Iowa](https://www.census.gov/quickfacts/fact/table/Marioncountyiowa,ia/PST045218)

ECONOMIC DETAILS (2)

	Economic Indicator	Pella PSA (2023) N=260	Pella PSA (2020) N=420	Pella PSA (2017) N=219	Pella PSA (2014) N=225	Trend	State of Iowa
2	Per Capita Money Income in Past 12 Months (2021 dollars)	\$34,545	\$29,640	\$26,280	\$25,062		\$34,817
2	Housing Units in Multi-Unit Structures, Percent	N/A	13.5%	13.9% (09-13)	12.7%		1,438,565
2	Persons per Household	2.4	2.4	2.4 (11-15)	2.5		2.42
2	Severe Housing Problems (County Health Rankings)	10%	11%	10.0%	--		12%
2	Retail Sales per Capita (Business Quick Facts)		\$18,895		--		\$14,607
2	Total Number of Firms (Business Quick Facts)		852		3,254		61,849
2	Unemployment (County Health Rankings)	3.1%	2.0%	3.2%	6.3%		4.2%
2	Overall Food Insecurity Rate (Feeding America)		10.3%	--	11.5% (2013)		7.5%
2	Child Food Insecurity Rate (Feeding America)		14.4%	15.8% (2015)	--		9.4%
2	Mean Travel Time to Work (Minutes), Workers Age 16+	19.8	11.2		20.4 (2006)		19.6
2	Long Commute - Driving Alone (County Health Rankings)	26%	26%		--		21%

Source: Unless stated source: US Census – Quick Facts

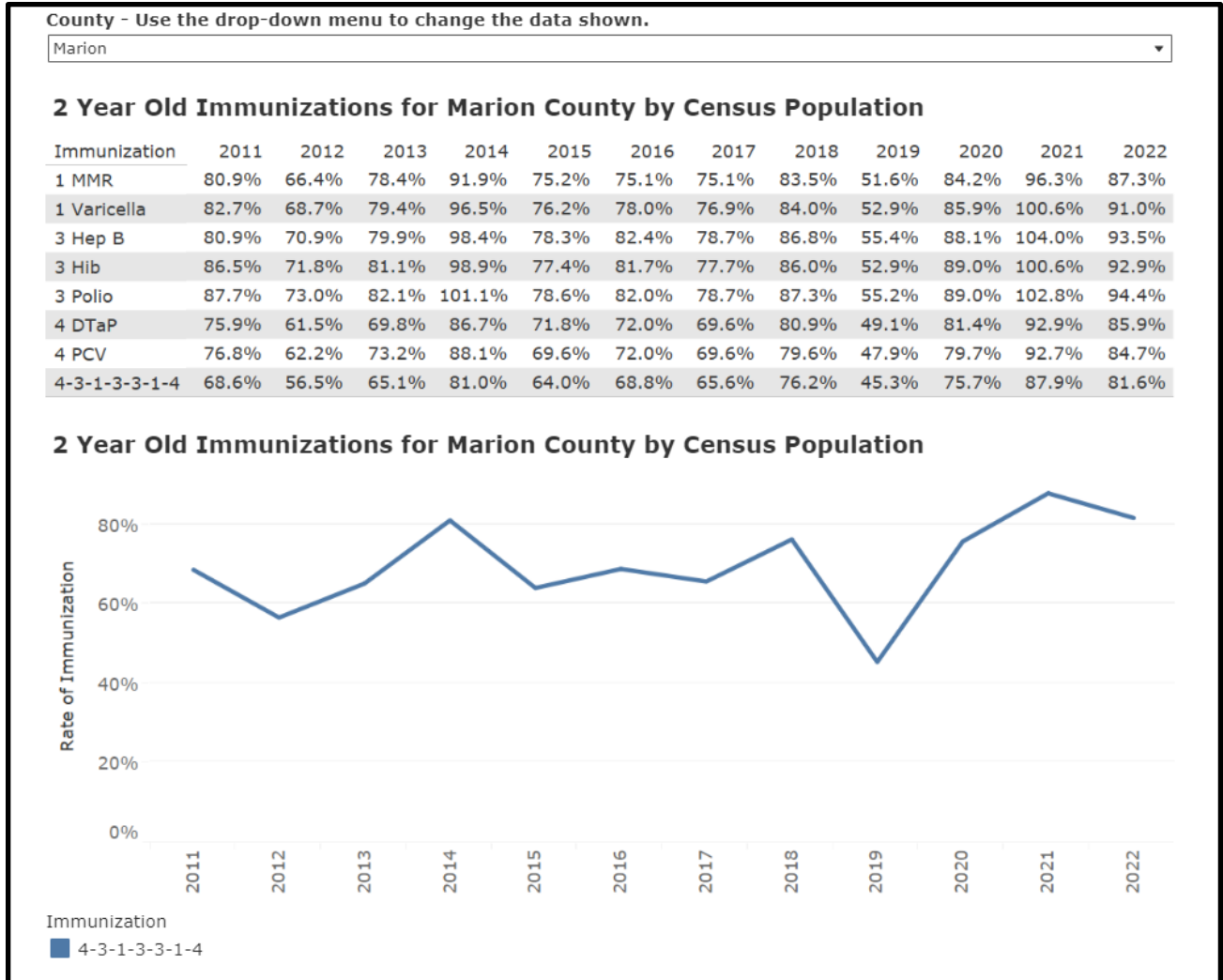
<https://www.census.gov/quickfacts/fact/table/Marioncountyiowa,ia/PST045218>

PUBLIC SCHOOLS HEALTH DELIVERY (3A AND 3B)

Currently school districts are providing on-site primary health screenings and basic care.

	Education Indicator	Pella PSA (2023) N=260	Pella PSA (2020) N=420	Pella PSA (2017) N=219	Pella PSA (2014) N=225	Trend	State of Iowa
3a	Students Eligible for Free Lunch (%)	28%	21.7%	31.0%	30.7%		30.0%
3a	4-Year High School Graduation Rates (Quick Facts)	94.0%	96%	92.0%	94%		92.8%
3a	Bachelor's Degree or Higher, Percent of Persons Age 25+, (Quick Facts)	30.9%	37.2%	24.8%	23.5%		29.7%

	Education/Health Indicators	Pella PSA Community School District (2022)	Pella PSA Community School District (2019)	Pella Co Community School Districts (2017)
1	Number of Public-School Nurses	Will be provided in winter of 2023	Will be provided in fall of 2020	1 FT/3PT
2	School Wellness Plan in Place (Active)			YES
3	VISION: Number Screened / Referred to Prof / Seen by Professional			NA
4	HEARING: Number Screened / Referred to Prof / Seen by Professional			NA
5	ORAL HEALTH: Number Screened / Referred to Prof / Seen by Professional			P: 302/16/NA, PC: 117/9/NA
6	SCOLIOSIS: Screened / Referred to Prof / Seen by Professional			Do not screen
7	Students Served with No Identified Chronic Health Concerns			NA
8	Students Served with Identified Chronic Health Concerns			NR
9	Tdap Vaccine Provided to Children Age 10-18			NR
10	School has a Suicide Prevention Program			P: NA, PC: YES
11	Compliance on Required Vaccinations <ul style="list-style-type: none"> 2-year-old benchmark (DTaP, HepB, MMR, Hib, Polio, Varicella, Pneumo.) Adolescent benchmark (TdapTd, HepB, MMR, Varicella, Meningo) Adolescent HPV benchmark 			P: 99%, PC: 94%



MATERNAL AND INFANT HEALTH (4A AND 4B)

Tracking maternal and infant care patterns is vital in understanding the foundation of family health.

	Health Indicator	Pella PSA (2023) N=260	Pella PSA (2020) N=420	Pella PSA (2017) N=219	Pella PSA (2014) N=225	Trend	State of Iowa
4a	Mothers Who Began Prenatal Care in First Trimester (Iowa Health Fact Book)	629	599	687	88.4%		Rank 20
4a	Annual Birth Outcome % Preterm (March of Dimes)	—	8.5%	12.0%	--		9.1%
4a	Low Birth Weight (<2500 Grams) (Iowa Health Fact Book)	44	57.2	6.0%	6.1%		Rank 22

4a	Mothers Who Smoked During Pregnancy (Iowa Health Fact Book)	78	164	131	--		Rank 20
4a	Mothers under Age 20 (Iowa Health Fact Book)	27	27	29	--		Rank 24
4a	Out-of-Wedlock Births (Iowa Health Fact Book)	202	197	283	115		Rank 23
4a	Average Monthly WIC Participation (https://datacenter.kidscount.org)	—	23.5%	2.5%	24.5%		26.9% (2017)

LIVE BIRTHS (4B)

	Vital Statistics	Pella PSA (2023) N=260	Marion County, Iowa	Trend	State of Iowa
4	Total Live Births, 2012		368		38,686
4	Total Live Births, 2013		390		39,013
4	Total Live Births, 2014		368		39,685
4	Total Live Births, 2015		346		39,467
4	Total Live Births, 2016		408		39,054
4	Total Live Births, 2017		360		
4	Total Live Births, 2018		322		

Source: Iowa Department of Public Health, Vital Statistics

HOSPITAL SPECIFIC DETAILS (5)

Understanding provider access and disease patterns are fundamental in healthcare delivery.

	Health Indicator	Pella PSA (2023) N=260	Pella PSA (2020) N=420	Pella PSA (2017) N=219	Pella PSA (2014) N=225	Trend	State of Iowa
5	Primary Care Physicians per 1 (County Health Rankings)	1,110:1	1,030:1	1,040:1	983		1,360:1
5	Preventable Hospital Stays per 100,000 (County Health Rankings)	2,113	2,980	3,318	4,593		2,400
5	Patients Who Gave Their Hospital a Rating of 9 or 10 on a Scale from 0 (Lowest) to 10 (Highest) (CMS Hospital Compare)	No longer collected	82%	77%	--		77%
5	Patients Who Reported Yes, They Would Definitely Recommend the Hospital (CMS Hospital Compare)		83%	74.5%	--		75%

5	Average Time Patients Spent in the Emer. Department Before They Were Seen by a Healthcare Professional, minutes (CMS Hospital Compare)		NR	3.0	--		115
5	Medicare Hospital Spending per Patient (Medicare Spending per Beneficiary) (CMS Hospital Compare)		Not Avail	Not Avail.	--		0.95
5	Unplanned Readmission Rate (new 2018) (CMS Hospital Compare)		15.3% (Nat Rate)	--	--		15% (national)

BEHAVIORAL AND MENTAL HEALTH PROFILE

	Health Indicator	Pella PSA (2023) N=260	Pella PSA (2020) N=420	Pella PSA (2017) N=219	Pella PSA (2014) N=225	Trend	State of Iowa
6	Depression: Medicare Population (Center for Medicare and Medicaid Services)	18%	17%	15.8%	--		13.8%
6	Alcohol-Impaired Driving Deaths, (3 of 6 Total Driving Deaths) (County Health Rankings)	56%	42%	27%	--		27%
6	Poor Mental Health Days (County Health Rankings)	4.0	3.3	2.0	2.1		4.4

HEALTH BEHAVIORS PROFILE (7A)

Knowing community health risk factors and disease patterns can aid in the understanding of next steps to improve health.

	Health Indicator	Pella PSA (2023) N=260	Pella PSA (2020) N=420	Pella PSA (2017) N=219	Pella PSA (2014) N=225	Trend	State of Iowa
7a	Adult Obesity	34%	34%	33%	32%		37%
7a	Adult Smoking	16%	15%	16%	20%		17%
7a	Excessive Drinking	24%	21%	19%	12%		25%
7a	Physical Inactivity	21%	26%	24%	25%		23%
7a	Poor Physical Health Days	2.6	3.0	2.9	2.1		2.8

7a	Sexually Transmitted Infections (per 100,000 residents)	318.8	287	249.9	--		478.5
----	--	-------	-----	-------	----	--	-------

Source: County Health Ranking (7A)

CHRONIC HEALTH PROFILE (7B)

	Health Indicator – Medicare Population	Pella PSA (2023) N=260	Pella PSA (2020)	Pella PSA (2017)	Trend	State of Iowa
7b	Asthma	Not updated per CMS in 2023. Use 2020 numbers	2.86%	2.9%		4.08%
7b	Atrial Fibrillation		9.09%	8.8%		9.01%
7b	Cancer		7.73%	--		7.56%
7b	Chronic Kidney Disease		19.53%	11.5%		20.91%
7b	COPD		10.25%	9.7%		11.28%
7b	Diabetes		22.90%	26%		24.15%
7b	Heart Failure		11.56%	--		12.77%
7b	Hyperlipidemia		36.92%	23.6%		38.88%
7b	Hypertension		54.53%	49.2%		53.62%
7b	Osteoporosis		6.63%	--		5.99%
7b	Stroke	2.18%	2.0%		2.91%	

Source: Center for Medicare and Medicaid Services (7B) <https://cms-oeda.maps.arcgis.com/apps/MapSeries/index.html?appid=2653fc1758474036a46c1a2f47d4d243>

MORTALITY PROFILES

The leading causes of county deaths are listed below.

	Health Indicator	Pella PSA (2023) N=260	Pella PSA (2020) N=420	Pella PSA (2017) N=219	Pella PSA (2014) N=225	Trend	State of Iowa
8	Life Expectancy Females (Institute for Health Metrics and Evaluation)	81.8	81.8	80.9	NA		81.9
8	Life Expectancy Males (Institute for Health Metrics and Evaluation)	76.7	76.7	77.2	--		77.5
8	Infant Deaths (Iowa Health Fact Book)	No data reported	6	--	--		No data reported

CAUSE OF DEATH

#	Causes of Death by County of Residence	Pella PSA (2023) N=260	Pella PSA (2020) N=420	Pella PSA (2017) N=219	Pella PSA (2014) N=225	Trend	State of Iowa Rank
	All Causes	1,771	1,712	1,602	454		21
1	Heart Disease	444	502	422	--		19
2	All Cancer	402	407	369	--		21
3	Lung Cancer	71	106	94	--		24
4	Chronic Obstructive Pulmonary Disease	102	92	69	--		21
5	Stroke	88	90	94	--		20
6	Alzheimer's Disease	78	89	85	--		24
7	Accidents and Adverse Effects	79	65	61	--		23
8	Pneumonia/Influenza	43	47	54	--		13
9	Diabetes Mellitus	43	35	36	--		24
10	Suicide	35	28	--	--		18
11	Falls	27	23	--	--		22
12	Firearms	23	21	--	--		16
13	All Transportation	23	17	--	--		21
14	Motor Vehicle Traffic	21	13	--	--		17

Source: Iowa Health Fact Book

PREVENTATIVE HEALTH (COUNTY HEALTH RANKINGS)

	Health Indicator	Pella PSA (2023) N=260	Pella PSA (2020)	Pella PSA (2017)	Trend	State of Iowa
9	Access to Exercise Opportunities	74%	86%	72%		79%
9	2-Year-Old Coverage of Individual Vaccines and Selected Vaccination Series, (Iowa Immunization Program)		75%	72%		71.0%
9	Diabetic Prevalence	8%	11%	10%		9%
9	Mammography Screening	51%	55%	70%		47%
9	Limited Access to Healthy Food	3%	3%	3%		6%
9	Percent Annual Check-Up Visit with PCP	Not found	Not found	Not found		Not found
9	Percent Annual Check-Up Visit with Dentist	Not found	Not found	Not found		Not found
9	Percent Annual Check-Up Visit with Eye Doctor	Not found	Not found	Not found		Not found

UNINSURED PROFILES (SOURCE: IOWA HEALTH FACT BOOK)

	Health Indicator	Pella PSA (2023) N=260	Pella PSA (2020)	Pella PSA (2017)	Trend	State of Iowa
10a	Uninsured (Under 65), 2020	4.1%	4.0%	6.0%		5.7%

BAD DEBT AMOUNT

	Pella Regional Health Center	YR14	YR15	YR16	YR16	YR17	YR18	YR19	YR2020	TREN
10b	Bad Debt	\$1,583,195	\$1,865,820	\$1,689,214	\$1,866,000	\$1,689,000	\$1,402,000	\$1,760,367		
10b	Charity Care	\$351,897	\$351,822	\$323,769	\$756,000	\$697,000	\$723,000	\$376.358		

Inventory of Community (Service Area) Health Partners

Providers can be found at <https://www.pellahealth.org/doctors/>

Family Medicine

Pella Regional Health Center

404 Jefferson Street, Pella, IA 50219
641-621-2200

- Garrett Donaldson, MD
- Scot Dykstra, DO
- Rebecca Dykstra, DO
- Cassandra Lanning, DO
- Maria Lao, MD
- Luca Mihalovich, DO
- Seth Streeter, DO (Prairie City)
- Elizabeth Wooster-Pierson, MD
- Mitch Blom, DO
- Danielle Clark, DO
- Anne Hellbusch, DO
- Orville Jacobs (Sully, Bussy, P City)
- Kevin Mace, DO
- Mario Martinez, MD, PhD
- Richard Posthuma, MD
- Daniel, Rowley, MD
- Heidi Van Maanen, DO
- Tereasa Van Zee, DO
- Galyn Vande Zande, DO
- Heidi Wintermote, DO
- Craig Wittenberg, MD
- Holly Dunlavy, ARNP
- Kenzie Huyser, DNP, FNP

- Jamie Amble, NP-C
- Marsha Collins, PA-C
- Diane DeJong, PA-C (Sully)
- Jennifer Sheffield, PA-C
- Jamie Steenhoek, ARNP (Prairie City)
- Jennifer Wadle, PA-C

Pella Regional Health Center

Ottumwa Clinic – Family Practice

- Allison Crall, ARNP (Ottumwa Clinic)
- Bethanne Stevens, ARNP (Ottumwa)

Pella Regional Health Center

Knoxville Clinic - Family Practice

1208 N. Lincoln Knoxville, IA 50138
641-828-3832

- Jennifer Elkin, DO
- Kevin Mace, DO
- Richard Posthuma, MD
- Craig Wittenberg, MD

Emergency Department

Pella Regional Health Center

404 Jefferson Street, Pella, IA 50219
641-621-2200

- Matthew Gritters MD
- Ryan Thoreson, DO

Stephen Barnes, DO
 Kimberly Bina, DO
 Karen Emmert, PA-C
 Jeffrey Hartung, DO
 Wendelin Kriefels, MD
 Daniel Wright, DO

General Surgery

Pella Regional Health Center
 404 Jefferson Street, Pella, IA 50219
 641-628-6772
 Matt Morgan, DO
 John Welander, MD, FACS

Allergy

Pella Regional Health Center
 404 Jefferson Street, Pella, IA 50219
 515-226-9559
 Ravinder Agarwal, MD

Audiology

Pella Regional Health Center
 404 Jefferson Street, Pella, IA 50219
 641-628-3150
 Curtis Pargeon, COHC, HIS
 Dotty Walters, AUD

Cardiology

Pella Regional Health Center
 404 Jefferson Street, Pella, IA 50219
 515-633-3665
 Joel From, MD
 Sydney Anderson, ARNP, C-FNP, DNP
 Daniel Shivapour, MD

Chiropractic

VanHemert Chiropractic
 1310 Washington St., Pella, IA 50219
 641-628-2099
 Dr. Russell VanHemert, DC

Browne Family Chiropractic
 110 10th St., Pella, IA 50219
 641-628-3133
 Dr. Beau Browne, DC

Red Rock Chiropractic
 1400 Fifield Road, Pella, IA 50219
 641-628-9991

Hanlon Chiropractic Wellness
 700 Main St Ste 213, Pella, IA 50219
 641-628-8800

Andersen Chiropractic & Wellness
 1910 Washington St., Pella, IA 50219
 641-621-1910

Van Wyk Chiropractic Center
 911 Washington St., Pella, IA 50219
 641-628-3511

Pella Family Chiropractic & Massage
 504 Franklin St., Pella, IA 50219
 641-628-7240

Dentists

Pella Family Dentistry
 2300 Washington Street, Pella, IA 50219
 641-628-2671
 Micha Vermeer, DDS

Recker Dental Care
 2114 Washington Street, Pella, IA 50219
 641-628-1604
 Eric Recker, DDS
 Leigh Rasmussen, DDS

Allen & Neumann Family Dentistry
 839 Broadway Street, Pella, IA 50219
 641-628-1121
 Jeffrey Allen, DDS
 Denise Neumann, DDS

Dahm Dental
 2018 Washington Street, Pella, IA 50219
 641-628-2468

Barnes, David, DDS
 715 Main Street, Pella, IA 50219
 641-628-2671
 David Barns, DDS

Kim Wass, DDS

Vannucci, Gregory, DDS

2601 Washington Street, Pella, IA 50219
641-628-2011

Shamrock Dental Co

1105 Big Rock Park Rd
641-628-1840

Pella Orthodontics

901 W. 16th Street Ste 100, Pella, IA 50219
641-628-9195

Dermatology

Pella Regional Health Center

404 Jefferson Street, Pella, IA 50219
641-621-2200

Vincent Angeloni, MD

Jacquelyn Swim, ARNP

ENT

Pella Regional Health Center

404 Jefferson Street, Pella, IA 50219
641-236-2585

Joseph K. Whitman, DO

Gynecology

Pella Regional Health Center

404 Jefferson Street, Pella, IA 50219
641-621-2200

Joseph Coleman, MD, FACOG

Maria Hernandez, MD, FACOG, FPMRS

Dale Lensing, MD

Home Care Agencies

Quality Home Care Professionals

101 E Marion, Knoxville, IA 50138
641-828-7889

Iowa Home Care

2521 Washington, Pella, IA 50219
641-620-1528

Home Instead Senior Care

888-331-3242

Marion County Public Health

Kim Dorn, Director

2003 N Lincoln, Knoxville, IA 50138
641-828-2238

Every Step Hospice

213 E Main, Suite 103,
Knoxville, IA 50138

Hospitalist

Pella Regional Health Center

404 Jefferson Street, Pella, IA 50219
641-621-2200

Charles Canedy, MD

Ron Childerston, DO

Don Nguyen, MD

Internal Medicine

Pella Regional Health Center

404 Jefferson Street, Pella, IA 50219
641-621-2200

Maria Lao, MD

Doug Kanis, DO

Robin Vande Voort, MD

Nurse Anesthetist

Pella Regional Health Center

404 Jefferson Street, Pella, IA 50219
641-621-2200

Andy Hunsinger, CRNA

Brady Blazek, CRNA

Jon Schettler, CRNA

Joel Shaw, CRNA

Gregg Sutton, CRNA

Nursing Home/Assisted Living

Westley Life Services

Hearthstone, Pella Manor

The Cottages

Fair Haven

Obstetrics/FM

Pella Regional Health Center

404 Jefferson Street, Pella, IA 50219
641-621-2200

Garrett Donaldson, MD
 Cassandra Lanning, DO
 Lucas Mihalovich, DO
 Elizabeth Wooster-Pierson, MD
 Anne Hellbusch, DO
 Mario Martinez, MD, PhD
 Richard Posthuma, MD
 Daniel Rowley, MD
 Tereasa Van Zee, DO
 Craig Wittenberg, MD

Oncology

Pella Regional Health Center

404 Jefferson Street, Pella, IA 50219
 641-620-2021
 Emily Brugioni, DO

Ophthalmology/Optomtrist

Pella Regional Health Center

404 Jefferson Street, Pella, IA 50219
 515-232-2450
 Ryan Vincent, MD

Family Eye Care Center, PC

518 Franklin Street, Pella, IA 50219
 641-628-2023

Whylie Eye Care Center

1534 Washington Street, Pella, IA 50219
 641-628-2530

Eye Care Partners, PC

823 Franklin Street, Pella, IA 50219
 641-628-9225

Orthopedics

Pella Regional Health Center

404 Jefferson Street, Pella, IA 50219
 641-621-2200
 Steven Aviles, MD
 Michael Gainer, MD
 Ze-Hui Han, MD
 Christopher Vincent, MD
 Benjamin Beecher, MD
 Joe Galles, MD
 Mark Matthes, MD

Blake C. Hale, DPM
 Dudley Phipps, PA-C
 Kurt Smith, DO
 Miranda Ayers-Burkgren, PA-C

Radiology

Pella Regional Health Center

404 Jefferson Street, Pella, IA 50219
 641-621-2200
 Raviv Ramdial, MD
 Alison Smith, DO
 John Tentinger, MD

Podiatry

Pella Regional Health Center

404 Jefferson Street, Pella, IA 50219
 641-621-2200
 Jill Frerichs, DPM
 Blake C. Hale, DPM
 Sean McMurray, DPM

Urology

Pella Regional Health Center

404 Jefferson Street, Pella, IA 50219
 641-621-2383
 Russell Bandstra, MD
 Ryan Dornbier, MD
 Richard Glowacki, MD
 Stephanie Pothoven, DO, FACOS
 Trevor Wild, MD

Specialist

Pella Regional Health Center

404 Jefferson Street, Pella, IA 50219
 641-621-2200
 Mark M. Belz, MD, FACP (Nephrology)
 Johanna Schmolck, MD (Nephrology)
 Matthew Doty, MD (Occup. Medicine)
 Christina Sailors, ARNP (Occup. Med)
 Chelsey Ballard, PA-C (Occup. Med)
 Thomas Klein, DO (Pain Management)
 Wesley Rayburn, MD (Pain Mgmt)
 Andrew Johnson, ARNP, CRNA, NSPM-C (Pain Mgmt)
 Austin Dueksen, PA-C (Pain Mgmt)
 Emmylu Johnson, PA-C (Pain Mgmt)

Timothy Schurman, MD (Plastic Surg)
 Gerard Matysik, DO (Pulmonary Med)
 Shelby Dames, MD (Rheumatology)
 Jason Wittmer, MD (sleep disorders)
 Gerard Matysik, DO (Sleep dx)
 Russell Bandstra, MD (Urology)
 Aaron Smith (Urology)
 Nicholas Southard, DO (Vascular Surg)
 Maria Lao, MD (Weight Management)
 John Kanis, DO (Wound Care)
 Chelsey Ballard, PA-C (Wound Care)
 Molly Engelhart, DNP (Wound Care)

Veterans Care

VA Central IA Healthcare System Based Outpatient Clinic

1607 N Lincoln
 Knoxville, IA 50138
 641-828-5020

Marion County Veteran Affairs

214 E Main
 Knoxville, IA 50138
 641-828-2201

Community (Service Area) Resources – Inventory of Services

Inventory of Health Services – Pella Service Area and Marion County, Iowa

Inventory of Health Services – Pella service area, Public Health Department, and Primary Service Area (Marion County, IA)				
Cat	Healthcare Services Offered in County: Yes / No	PRHC	Health Dept	County
Clinic	Primary Care	Yes	No	Yes
Hosp	Alzheimer Center	Yes	No	Yes
Hosp	Ambulatory Surgery Centers	Yes	No	Yes
Hosp	Arthritis Treatment Center	Yes	No	No
Hosp	Bariatric/Weight Control Services	Yes	Yes	No
Hosp	Birthing/LDR/LDRP Room/ Obstetrics	Yes	No	Yes
Hosp	Breast Cancer	Yes	No	Yes
Hosp	Burn Care	No	No	No
Hosp	Cardiac Rehabilitation	Yes	No	Yes
Hosp	Cardiac Surgery	No	No	No
Hosp	Cardiology Services	Yes	No	Yes
Hosp	Case Management	Yes	Yes	Yes
Hosp	Chaplaincy/Pastoral Care Services	Yes	No	Yes
Hosp	Chemotherapy	Yes	No	Yes
Hosp	Colonoscopy	Yes	No	Yes
Hosp	Crisis Prevention	No	Yes	Yes
Hosp	CT Scanner	Yes	No	Yes
Hosp	Diagnostic Radioisotope Facility	Yes	No	No
Hosp	Diagnostic/Invasive Catheterization	No	No	No
Hosp	Enrollment Assistance Services	Yes	No	Yes
Hosp	Full Field Digital Mammography (FFDM)	Yes	No	Yes
Hosp	Genetic Testing/Counseling	Yes	No	No

Inventory of Health Services – Pella service area, Public Health Department, and Primary Service Area (Marion County, IA)				
Cat	Healthcare Services Offered in County: Yes / No	PRHC	Health Dept	County
Hosp	Geriatric Services	Yes	Yes	Yes
Hosp	Heart	No	No	No
Hosp	Hemodialysis	No	No	Yes
Hosp	HIV/AIDS Services	No	No	No
Hosp	Image-Guided Radiation Therapy (IGRT)	No	No	No
Hosp	Inpatient Acute Care - Hospital Services	Yes	No	Yes
Hosp	Intensity-Modulated Radiation Therapy (IMRT) 161	No	No	No
Hosp	Intensive Care Unit	Yes	No	No
Hosp	Intermediate Care Unit	Yes	No	Yes
Hosp	Interventional Cardiac Catheterization	No	No	No
Hosp	Isolation room	Yes	No	Yes
Hosp	Kidney	No	No	No
Hosp	Liver	No	No	No
Hosp	Lung	No	No	No
Hosp	Magnetic Resonance Imaging (MRI)	Yes	No	Yes
Hosp	Mobile Health Services	Yes	No	Yes
Hosp	Multi-slice Spiral Computed Tomography (<64 slice CT)	Yes	No	Yes
Hosp	Multi-slice Spiral Computed Tomography (<64+ slice CT)	No	No	No
Hosp	Neonatal	No	No	No
Hosp	Neurological Services	No	No	No
Hosp	Occupational Health Services	Yes	No	Yes
Hosp	Oncology Services	Yes	No	Yes
Hosp	Orthopedic Services	Yes	No	Yes
Hosp	Outpatient Surgery	Yes	No	Yes
Hosp	Pain Management	Yes	No	No
Hosp	Palliative Care Program	Yes	No	No
Hosp	Pediatric	Yes	No	Yes
Hosp	Physical Rehabilitation	Yes	No	Yes
Hosp	Positron Emission Tomography/CT (PET) (PET/CT)	Yes	No	Yes
Hosp	Psychiatric Services	Yes	No	Yes
Hosp	Radiology, Diagnostic & Therapeutic	Yes	No	Yes
Hosp	Reproductive Health	Yes	No	No
Hosp	Robotic Surgery	No	No	Yes
Hosp	Sleep Center	Yes	No	Yes
Hosp	Social Work Services	Yes	Yes	Yes
Hosp	Sports Medicine	Yes	No	Yes
Hosp	Swing Bed Services	Yes	No	Yes

Inventory of Health Services – Pella service area, Public Health Department, and Primary Service Area (Marion County, IA)				
Cat	Healthcare Services Offered in County: Yes / No	PRHC	Health Dept	County
Hosp	Transplant Services	No	No	No
Hosp	Trauma Center-Level IV	Yes	No	Yes
Hosp	Ultrasound	Yes	No	Yes
Hosp	Women's Health Services	Yes	Yes	Yes
Hosp	Wound Care	Yes	No	Yes
SR	Adult Day Care Program	No	No	No
SR	Assisted Living	Yes	No	Yes
SR	Home Health Services	Yes	Yes	Yes
SR	Hospice	Yes	No	Yes
SR	Long-Term Care and Nursing Home Services	Yes	No	Yes
SR	Retirement Housing	No	No	Yes
SR	Skilled Nursing Care	Yes	No	Yes
ER	Emergency Services	Yes	No	Yes
ER	Urgent Care Center	Yes	No	No
ER	Ambulance Services	Yes	No	Yes
SERV	Alcoholism-Drug Abuse	No	No	Yes
SERV	Blood Donor Center	No	No	No
SERV	Chiropractic Services	No	No	Yes
SERV	Complementary Medicine Services	No	Yes	No
SERV	Dental Services	No	Yes	Yes
SERV	Fitness Center	No	No	Yes
SERV	Health Education Classes/Health Fairs/ Support Groups	Yes	Yes	Yes
SERV	Health Information Center	Yes	Yes	Yes
SERV	Health Screenings	Yes	Yes	Yes
SERV	Meals on Wheels	No	Yes	Yes
SERV	Nutrition Programs	Yes	Yes	Yes
SERV	Patient Education Center	Yes	No	No
SERV	Teen Outreach Services	No	No	Yes
SERV	Tobacco Treatment/Cessation Program	Yes	By Referral	Yes
SERV	Transportation to Health Facilities	No	No	Yes
SERV	Wellness Program	Yes	Yes	Yes

Providers Delivering Care – Marion County, Iowa

CARE DELIVERY

Care Providers			
	FTE Physicians		FTE Allied Staff
# of FTE Providers working in Primary Service Area (PSA)	PSA Based DRs	Visiting DRs Commun.	PSA Based PA / NP
Primary Care:			
Family Practice	21		9
Internal Medicine/Geriatrician	3		
Obstetrics/Gynecology	11		
Pediatrics	0		
Medicine Specialists/ Visiting Specialist:			
Allergy/Immunology	1		
Audiology	2		1
Cardiology	2		1
Dermatology	1		2
Endocrinology	0		
ENT (Ear/Nose/Throat)	1		
Gastroenterology	0		
Oncology/Radiology	2		1
Orthopedics /Surgery	9		2
Orthotics/Prosthetics	0		
Infectious Diseases	0		
Neonatal/Perinatal	0		
Nephrology	2		
Neurology			1
Occupational Medicine	1		1
Physical Medicine/Rehab			
Podiatry	1		
Psychiatry	0		
Pulmonary	1		
Rheumatology	1		
Surgery Specialists:			
General Surgery/Colon/Oral	2		1
Neurosurgery	0		
Ophthalmology/Optomety	1		
Otolaryngology (ENT)	1		

Care Providers			
	FTE Physicians		FTE Allied Staff
# of FTE Providers working in Primary Service Area (PSA)	PSA Based DRs	Visiting DRs Commun.	PSA Based PA / NP
Plastic/Reconstructive	0		
Thoracic/Cardiovascular/Vascular	0		
Urology	2		
Women's Health			1
Vascular Surgery	1		
Hospital Based:			
Anesthesia/Pain	2		4
Electromyography			
Emergency	5		1
Radiology	2		
Pathology		2	
Hospitalist	3		
Non-Hospital Based (Community):			
Chiropractor		7	
Optometrist		5	
Dentist		11	

Service Directory

EMERGENCY NUMBERS

Police/ Sheriff	911
Fire	911
Ambulance	911

NON-EMERGENCY /MUNICIPAL NUMBERS (MARION COUNTY, IOWA)

Marion County Sheriff (Police)	(641) 828-2220
Pella EMS	(641) 628-1780
Pella Fire	(641) 628-4921
Pella Police	(641) 628-4921

QUICK REFERENCE PHONE GUIDE

Action Now	1-800-622-5168
Al-Anon "Free to Be Me"	(515) 462-4253
Alcoholics Anonymous	(515) 282-8550

Alzheimer's Disease Helpline	1-800-272-3900
American Cancer Society	1-800-227-2345
American Red Cross	1-800-887-2988
Arthritis Foundation	1-866-378-0636
Battered Women	1-800-433-SAFE
Child Abuse Hotline	1-800-795-9606
Dependent Adult Abuse Hotline	1-800-362-2178
Dependent Adult and Child Abuse	1-800-652-9516
Domestic Abuse Hotline	1-800-942-0333
First Call for Help	(515) 246-6555
Foundation Through Crisis	1-800-332-4224
Gambling Hotline	1-800-238-7633
Iowa Arson/Crime Hotline	1-800-532-1459
Iowa Child Abuse Reporting Hotline	1-800-362-2178
Iowa State Patrol Emergency	1-800-525-5555
Medicare	1-800-MEDICARE
Mental Health Information and Referral	1-800-562-4944
National Alcohol Hotline	1-800-252-6465
National Center for Missing and Exploited Children	1-800-THE LOST
National Institute on Drugs	1-800-662-4537
Poison Control	1-800-222-1222
Senior Health Insurance Info Program (SHIIP)	1-800-351-4664
Substance Abuse Information & Treatment	1-800-662-HELP
Suicide Prevention Hotline	1-800-SUICIDE
Teen Line (Red Cross)	

GENERAL ONLINE HEALTH RESOURCES

Doctors and Dentists—General

AMA Physician Select: [Online Doctor Finder](#) (American Medical Association) [DocFinder](#) (Administrators in Medicine) [Find a Dentist](#) (Academy of General Dentistry) [Find a Dentist: ADA Member Directory](#) (American Dental Association) [Physician Compare](#) (Centers for Medicare & Medicaid Services)

Hospitals and Clinics—General

[Find a Health Center](#) (Health Resources and Services Administration) [Find a Provider: TRICARE Provider Directories](#) (TRICARE Management Activity) [Hospital Quality Compare](#) (Centers for Medicare & Medicaid Services)

Doctors and Dentists—Specialists

[ACOG's Physician Directory](#) (American College of Obstetricians and Gynecologists) [ACR: Geographic Membership Directory](#) (American College of Rheumatology) [American College of Surgeons Membership Directory](#) (American

College of Surgeons) [American Osteopathic Association D.O. Database](#) (American Osteopathic Association) [ASGE: Find a Doctor](#) (American Society for Gastrointestinal Endoscopy) [Cancer Genetics Services Directory](#) (National Cancer Institute) [Child and Adolescent Psychiatrist Finder](#) (American Academy of Child and Adolescent Psychiatry) [Dystonia: Find a Health Care Professional](#) (Dystonia Medical Research Foundation) [Expert Locator: Immunologists](#) (Jeffrey Modell Foundation) [Find a Dermatologic Surgeon](#) (American Society for Dermatologic Surgery) [Find a Dermatologist](#) (American Academy of Dermatology) [Find a Gastroenterologist](#) (American College of Gastroenterology) [Find a Gynecologic Oncologist](#) (Society of Gynecologic Oncologists) [Find a Hand Surgeon](#) (American Society for Surgery of the Hand) [Find a Hematologist](#) (American Society of Hematology) [Find a Neurologist](#) (American Academy of Neurology) [Find a Pediatric Dentist](#) (American Academy of Pediatric Dentistry) [Find a Pediatrician or Pediatric Specialist](#) (American Academy of Pediatrics) [Find a Periodontist](#) (American Academy of Periodontology) [Find a Physical Medicine & Rehabilitation Physician](#) (American Academy of Physical Medicine and Rehabilitation) [Find a Plastic Surgeon](#) (American Society of Plastic Surgeons) [Find a Podiatrist](#) (American Podiatric Medical Association) [Find a Thyroid Specialist](#) (American Thyroid Association) [Find a Urologist](#) (American Urological Association) [Find an ACFAS Physician](#) (American College of Foot and Ankle Surgeons) [Find an Allergist/Immunologist: Search](#) (American Academy of Allergy, Asthma, and Immunology) [Find an Endocrinologist](#) (Hormone Health Network) [Find an Eye M.D.](#) (American Academy of Ophthalmology) [Find an Interventional Radiologist](#) (Society of Interventional Radiology) [Find an Oncologist](#) (American Society of Clinical Oncology) [Find an Oral and Maxillofacial Surgeon](#) (American Association of Oral and Maxillofacial Surgeons) [Find an Orthopedic Foot and Ankle MD](#) (American Orthopedic Foot and Ankle Society) [Find an Otolaryngologist \(ENT\)](#) (American Academy of Otolaryngology--Head and Neck Surgery) [Finding an Eye Care Professional](#) (National Eye Institute) [GI Locator Service](#) (American Gastroenterological Association)

Other Healthcare Providers

[AMTA's Find a Massage Therapist](#) (American Massage Therapy Association) [Cancer Genetics Services Directory](#) (National Cancer Institute) [Find a Diabetes Educator](#) (American Association of Diabetes Educators) [Find a Genetic Counselor](#) (National Society of Genetic Counselors) [Find a Midwife](#) (American College of Nurse-Midwives) [Find a Nurse Practitioner](#) (American Academy of Nurse Practitioners) [Find a Physical Therapist](#) (American Physical Therapy Association) [Find a Professional: Online Directory of Audiology and Speech-Language Pathology Programs](#) (American Speech-Language-Hearing Association) [Find a Registered Dietitian](#) (Academy of Nutrition and Dietetics) [Find a Therapist](#) (Anxiety Disorders Association of America) [Find an Audiologist](#) (American Academy of Audiology) [Manual Lymphatic Drainage Therapists](#) (National Lymphedema Network) [National Register of Health Service Providers in Psychology](#) (National Register of Health Service Providers in Psychology) [NCCAOM: Find Nationally Certified Practitioners](#) (National Certification Commission for Acupuncture and Oriental Medicine) [Search for an Emergency Contraception Provider in the United States](#) (Princeton University, Office of Population Research)

Hospitals and Clinics—Specialized

[Accredited Birth Centers](#) (Commission for the Accreditation of Birth Centers) [Alzheimer's Disease Research Centers](#) (National Institute on Aging) [Cystic Fibrosis Foundation: Find a Chapter](#) (Cystic Fibrosis Foundation) [Cystic Fibrosis Foundation: Find an Accredited Care Center](#) (Cystic Fibrosis Foundation) [Dialysis Facility Compare](#) (Centers for Medicare & Medicaid Services) [FDA Certified Mammography Facilities](#) (Food and Drug Administration) [Find a Free Clinic](#) (National Association of Free Clinics) [Find an Indian Health Service Facility](#) (Indian Health Service) [Find Treatment Centers](#) (American Cancer Society) [Genetics Clinic Directory Search](#) (University of Washington) [Locate a Sleep Center in the United States by Zip Code](#) (American Academy of Sleep Medicine) [MDA ALS Centers](#) (Muscular Dystrophy Association) [Mental Health Services Locator](#) (Substance Abuse and Mental Health Services Administration) [NCI Designated Cancer Centers](#) (National Cancer Institute) [Neurofibromatosis Specialists](#) (Children's Tumor Foundation) [Post-Polio Directory 2011: Post-Polio Clinics, Health Professionals, Support Groups](#)

(Post-Polio Health International including International Ventilator Users Network) [Spina Bifida Clinic Directory](#) (Spina Bifida Association of America) [Substance Abuse Treatment Facility Locator](#) (Substance Abuse and Mental Health Services Administration) [Transplant Center Search Form](#) (BMT InfoNet) [U.S. NMDP Transplant Centers](#) (National Marrow Donor Program) [VA Health Care Facilities Locator & Directory](#) (Veterans Health Administration) [Where to Donate Blood](#) (AABB) [Where to Donate Cord Blood](#) (National Marrow Donor Program)

Other Healthcare Facilities and Services

[Alzheimer's Disease Resource Locator](#) (Fisher Center for Alzheimer's Research Foundation) [American College of Radiology Accredited Facility Search](#) (American College of Radiology) [APA District Branch / State Association Directory](#) (American Psychiatric Association) [Directory of Organizations \(Deafness and Communication Disorders\)](#) (National Institute on Deafness and Other Communication Disorders) [Dog Guide Schools in the United States](#) (American Foundation for the Blind) [Eldercare Locator](#) (Dept. of Health and Human Services) [Find a Hospice or Palliative Care Program](#) (National Hospice and Palliative Care Organization) [Find Services \(for People with Vision Loss\)](#) (American Foundation for the Blind) [Find Urgent Care Centers by State](#) (Urgent Care Association of America) [Genetic Testing Laboratory Directory](#) (University of Washington) [Home Health Compare](#) (Centers for Medicare & Medicaid Services) [Medicare: Helpful Contacts](#) (Centers for Medicare & Medicaid Services) [Muscular Dystrophy Association Clinics and Services](#) (Muscular Dystrophy Association) [National Foster Care and Adoption Directory Search](#) (Children's Bureau) [Nursing Home Compare](#) (Centers for Medicare & Medicaid Services) [Organizations That Offer Support Services](#) (National Cancer Institute) [Poison Control Centers](#) (American Association of Poison Control Centers) [Resources and Information for Parents about Braille](#) (American Foundation for the Blind) [State-Based Physical Activity Program Directory](#) (Centers for Disease Control and Prevention) [TSA Chapters in the USA](#) (Tourette Syndrome Association) [Violence against Women: Resources by State](#) (Dept. of Health and Human Services, Office on Women's Health) [Where to Find Hair Loss Accessories and Breast Cancer Products](#) (American Cancer Society)

SOURCE: MedlinePlus provides links to directories to help you find libraries, health professionals, services, and facilities. NLM does not endorse or recommend the organizations that produce these directories, nor the individuals or organizations that are included in the directories.

DATA DETAILS

Plan Tactics for Marion County, Iowa – 2020 to 2023

Pella Regional Health Center CHNA-Health Implementation Plan		
2021 Health Needs - Primary Service Area (Marion County IA)		
#	CHNA Health Areas of Need	Specific Actions to Address Need
1	Mental Health	
	Provide depth and breadth of services for Mental Health needs in the communities	a Increase providers and access
		b Employment opportunities for providers
		c Funding reimbursement for shortage – barrier for services
		d Improvement of community responses (example EMT education)
		e Access to transportation to and from services in other communities
2	Child Care Services / Access	
	Address childcare services within the communities	a Investigate the options and opportunities with Childcare services and access
		b Continue to work with Partnership study
		c
3	Employment of Healthcare Workers	
	Attract and retain healthcare workers	a Partnering with community partners for attracting and retaining healthcare workers
		b Investigate housing options for low income workers available within the community.
		c
4	Elderly Services and Volume of Services	
	Services for the elderly in the community	a Increase in-home support options for elderly residence in communities
		b Increase the availability of staffing options and human capital for elderly services
		c Access and availability for adult day/acute services
		d Improvement for funding resources and options for services
5	Substance Abuse	
	Concern for and presence of substance abuse	a Drugs and substance use and presentation services/response
		b Increased access to services
		c
6	Teen Health	
	Services and access for teen health	a Improvement of services and access for teen health
		b Continue to work with Community Coalition
		c

Plan Tactics for Marion County, Iowa – 2017 to 2020

Pella Regional Health Center CHA-Health Implementation Plan

2018 - 2020 Health Needs - Primary Service Area (Marion County IA)

#	CHNA Health Areas of Need		Specific Actions to Address Need	LEAD	Partners	Timeframe
1	Lack of Qualified Healthcare Workers Seeking Employment	a	Enhance marketing strategies with our website to really share our story as it relates to employment. (Small hospital, friendly work environment, opportunities for professional development, progressive in industry, etc.)	Human Resources	Marketing & Communication	Ongoing
		b	Enhance connection with High Schools to educate on Healthcare Careers	Human Resources	Professionals in a cross section of PRHC	Ongoing
		c	Enhance college student connections with Pella Regional Health Center to draw potential seekers to PRHC. (i.e., Welcome to Nursing School cards/flyers and other communications)	Human Resources	Marketing & Communication	Ongoing
		d	Retention Measures— *enhance succession planning for professionals to see additional growth opportunities within. *enhance orientation experience to integrate staff into their work environment	Human Resources	Leadership Team	Ongoing
2	Mental Health (Access, Diagnosis and Placement)		Note: This is not part of Pella Regional's mission or core business operations. PRHC will partner with Pine Rest on actions		CROSS (Regional services in Iowa)	
		a	Monitor collaborative partnership with PineRest to provide service as needed.	PineRest PRHC	PineRest PRHC	Ongoing
		b	Increase patients' and Provider/Staff knowledge/awareness of available services	PineRest PRHC	PineRest PRHC Marion Co Public Health Dept	ongoing
		c	Increase outpatient services to prevent the need for inpatient services	PineRest PRHC	PineRest PRHC Marion Co Public Health Dept	Ongoing
		d	24/7 Crisis stabilization services/placement decreases the admissions to inpatients thereby increasing the availability of IP beds	Marion & Mahaska Counties	PRHC, PineRest, Knoxville Comm Hospital, Mahaska Health Partnership	2015
3	Increase Medicaid Reimbursement	a	Monitor state and federal regulations for changes to laws	CEO & Public Relations	IHA, AHA	Ongoing
		b	Follow AHA and IHA on Medicaid reimbursement issues.	CEO & Public Relations	IHA, AHA	Ongoing
		c	Communicate with legislators regarding effects of legislation on Medicaid payments	Public Relations	PRHC	Ongoing
		d	Mobilize Pella Regional constituents to communicate with legislators regarding Medicaid payment issues.	Public Relations	PRHC	Ongoing



4	Substance Abuse (Meth, Marijuana, Opioids, Prescription Drugs)	a	Increase patients and providers/Staff knowledge/awareness of available services	PineRest & PRHC	PineRest, PRHC, Marion Co Public Health Dept.	Ongoing
		c	Educate Providers on screening questions/tools to evaluate patients	PineRest, PRHC	PineRest, PRHC	Deploy in clinics
		d	Continue to monitor prescription drug abuse. Support providers in discouraging prescription drug abuse. On-going program within the ED and Clinic. Tracks potential abusers and avoids prescribing narcotics to patients who do not have a relationship with the PRHC provider.	PRHC	Area Drug Stores and Physicians	On-going program
5	Community Health Education (Own Personal Health)	a	Promote wellness exams annually	Public Relations	PRHC, Marion Co Public Health Dept	Annual in April-June
		b	Add wellness information to www.pellahealth.org	Public Relations	PRHC	July-Dec 2018
		c	Utilize Health Partners to communicate with chronic illness patients regarding scheduling of exams and testing	Clinic	PRHC	Ongoing

Iowa Hospital Data (Secondary Research)



Ambulatory Surgery

State/County/ZIP code	Marion Amb Surgery			Pella Regional Health Center			Market Share
	Measures	% of Col.	Avg. Charges	Measures	% of Col.	Avg. Charges	
Iowa							
Marion							
50044	452	3.0	\$11,621	148	2.4	\$7,529	32.7
50057	75	0.5	\$9,361	12	0.2	\$5,979	16.0
50062	276	1.8	\$13,397	38	0.6	\$7,056	13.8
50116	141	0.9	\$12,116	45	0.7	\$8,693	31.9
50119	232	1.5	\$10,874	111	1.8	\$7,570	47.8
50138	5,795	38.5	\$11,583	1,598	25.7	\$7,480	27.6
50163	382	2.5	\$16,163	67	1.1	\$9,037	17.5
50214	303	2.0	\$13,864	173	2.8	\$8,484	57.1
50219	5,998	39.9	\$10,915	3,762	60.4	\$7,009	62.7
50225	1,125	7.5	\$14,389	167	2.7	\$7,017	14.8
50256	265	1.8	\$10,823	105	1.7	\$8,266	39.6
Marion Total	15,044	100.0	\$11,693	6,226	100.0	\$7,247	41.4
Iowa Total	15,044	100.0	\$11,693	6,226	100.0	\$7,247	41.4
Report Totals:	15,044	100.0	\$11,693	6,226	100.0	\$7,247	41.4



Emergency Department

 <p>IOWA HOSPITAL ASSOCIATION <i>We care about Iowa's health</i></p>												
Patient Type: Outpatient Place of Service: ER Template Name: Market and Facility Report Name: PRHC 2023 CHNA ER Facility: Pella Regional Health Center Market Area: Marion ER Time Period: 2020 Q1 through 2022 Q4												
State/County/ZIP code	Marion ER			Pella Regional Health Center			Market Share					
	Measures	% of Col.	Avg. Charges	Measures	% of Col.	Avg. Charges						
Iowa												
Marion												
50044	1,192	3.6	\$3,301	570	3.8	\$3,409	47.8					
50057	188	0.6	\$2,985	22	0.1	\$3,064	11.7					
50062	665	2.0	\$3,173	73	0.5	\$3,121	11.0					
50116	303	0.9	\$2,993	117	0.8	\$3,121	38.6					
50119	564	1.7	\$3,223	353	2.4	\$3,267	62.6					
50138	14,916	45.6	\$2,875	3,190	21.5	\$3,202	21.4					
50163	976	3.0	\$3,619	103	0.7	\$3,782	10.6					
50214	497	1.5	\$3,347	421	2.8	\$3,142	84.7					
50219	10,374	31.7	\$3,665	9,424	63.6	\$3,531	90.8					
50225	2,504	7.7	\$4,132	232	1.6	\$3,350	9.3					
50256	531	1.6	\$3,357	306	2.1	\$3,664	57.6					
Marion Total	32,710	100.0	\$3,288	14,811	100.0	\$3,434	45.3					
Iowa Total	32,710	100.0	\$3,288	14,811	100.0	\$3,434	45.3					
Report Totals:	32,710	100.0	\$3,288	14,811	100.0	\$3,434	45.3					



Inpatient

 <p>IOWA HOSPITAL ASSOCIATION <i>We care about Iowa's health</i></p>												
Patient Type: Inpatient Template Name: Market and Facility Report Name: PRHC 2023 CHNA Inpatient Facility: Pella Regional Health Center Market Area: Marion Lab-Radiology Time Period: 2020 Q1 through 2022 Q4												
State/County/ZIP code	Marion Lab-Radiology					Pella Regional Health Center					Market Share	
	Discharges	% of Col.	LOS	ALOS	Avg. Charges	Discharges	% of Col.	LOS	ALOS	Avg. Charges		
Iowa												
Marion												
50044	291	3.4	2,052	7.05	\$68,329	86	3.3	344	4.00	\$14,635	29.6	
50057	46	0.5	179	3.89	\$38,856	8	0.3	21	2.63	\$7,978	17.4	
50062	186	2.2	869	4.67	\$37,720	14	0.5	29	2.07	\$8,965	7.5	
50116	77	0.9	391	5.08	\$53,944	19	0.7	60	3.16	\$13,782	24.7	
50119	144	1.7	696	4.83	\$38,203	42	1.6	179	4.26	\$16,121	29.2	
50138	3,625	42.0	18,036	4.98	\$43,523	721	27.5	2,302	3.19	\$12,731	19.9	
50163	262	3.0	1,317	5.03	\$51,705	13	0.5	30	2.31	\$10,321	5.0	
50214	151	1.8	637	4.22	\$43,496	69	2.6	203	2.94	\$12,220	45.7	
50219	2,881	33.4	13,280	4.61	\$38,528	1,543	58.9	5,707	3.70	\$14,414	53.6	
50225	840	9.7	3,876	4.61	\$43,271	61	2.3	163	2.67	\$13,608	7.3	
50256	121	1.4	777	6.42	\$65,504	42	1.6	151	3.60	\$17,561	34.7	
Marion Total	8,624	100.0	42,110	4.88	\$43,078	2,618	100.0	9,189	3.51	\$13,885	30.4	
Iowa Total	8,624	100.0	42,110	4.88	\$43,078	2,618	100.0	9,189	3.51	\$13,885	30.4	
Report Totals:	8,624	100.0	42,110	4.88	\$43,078	2,618	100.0	9,189	3.51	\$13,885	30.4	



Observation

 <p>IOWA HOSPITAL ASSOCIATION <i>We care about Iowa's health</i></p>								
Patient Type: Outpatient Service Marker: Observation Template Name: Market and Facility Report Name: PRHC 2023 CHNA Outpatient Facility: Pella Regional Health Center Market Area: Marion Outpatient 2017-2019 Time Period: 2020 Q1 through 2022 Q4								
State/County/ZIP code	Marion Outpatient 2017-2019			Pella Regional Health Center			Market Share	
	Measures	% of Col.	Avg. Charges	Measures	% of Col.	Avg. Charges		
Iowa								
Marion								
50044	152	3.7	\$12,311	78	3.7	\$8,709	51.3	
50057	25	0.6	\$8,000	9	0.4	\$3,731	36.0	
50062	65	1.6	\$14,951	12	0.6	\$5,958	18.5	
50116	28	0.7	\$16,160	13	0.6	\$11,158	46.4	
50119	55	1.3	\$14,865	37	1.7	\$10,911	67.3	
50138	1,733	42.5	\$11,836	563	26.4	\$5,798	32.5	
50163	106	2.6	\$17,948	13	0.6	\$12,251	12.3	
50214	72	1.8	\$12,387	54	2.5	\$7,610	75.0	
50219	1,480	36.3	\$12,255	1,262	59.3	\$8,837	85.3	
50225	286	7.0	\$17,323	44	2.1	\$6,427	15.4	
50256	77	1.9	\$12,826	44	2.1	\$8,800	57.1	
Marion Total	4,079	100.0	\$12,674	2,129	100.0	\$7,980	52.2	
Iowa Total	4,079	100.0	\$12,674	2,129	100.0	\$7,980	52.2	
Report Totals:	4,079	100.0	\$12,674	2,129	100.0	\$7,980	52.2	



Radiology and Lab

 <p>IOWA HOSPITAL ASSOCIATION <i>We care about Iowa's health</i></p>								
Patient Type: Outpatient Place of Service: Lab Radiology Template Name: Market and Facility Report Name: PRHC 2023 CHNA Outpatient lab radiology Facility: Pella Regional Health Center Market Area: Marion Lab-Radiology Time Period: 2020 Q1 through 2022 Q4								
State/County/ZIP code	Marion Lab-Radiology			Pella Regional Health Center			Market Share	
	Measures	% of Col.	Avg. Charges	Measures	% of Col.	Avg. Charges		
Iowa								
Marion								
50044	6,421	3.0	\$1,346	3,725	3.0	\$1,102	58.0	
50057	1,309	0.6	\$950	410	0.3	\$657	31.3	
50062	3,757	1.8	\$1,495	651	0.5	\$1,152	17.3	
50116	1,945	0.9	\$1,573	1,101	0.9	\$1,248	56.6	
50119	3,291	1.6	\$1,515	2,042	1.7	\$897	62.0	
50138	88,925	41.9	\$1,089	33,105	27.0	\$822	37.2	
50163	4,446	2.1	\$1,107	772	0.6	\$1,098	17.4	
50214	4,268	2.0	\$1,029	3,617	3.0	\$800	84.7	
50219	81,686	38.5	\$1,090	73,153	59.7	\$820	89.6	
50225	12,543	5.9	\$1,093	2,002	1.6	\$763	16.0	
50256	3,516	1.7	\$942	2,015	1.6	\$905	57.3	
Marion Total	212,107	100.0	\$1,111	122,593	100.0	\$837	57.8	
Iowa Total	212,107	100.0	\$1,111	122,593	100.0	\$837	57.8	
Report Totals:	212,107	100.0	\$1,111	122,593	100.0	\$837	57.8	

Outpatient – Other

 We care about Iowa's health								
Patient Type: Outpatient Place of Service: Other outpatient Template Name: Market and Facility Report Name: PRHC 2023 CHNA Other Outpatient Facility: Pella Regional Health Center Market Area: Marion County Time Period: 2020 Q1 through 2022 Q4		Marion County % of Measures Col. Avg. Charges		Pella Regional Health Center % of Measures Col. Avg. Charges			Market Share	
State/County/ZIP code		Measures	Col.	Avg. Charges	Measures	Col.	Avg. Charges	Market Share
Iowa								
Marion								
50044		610	2.5	\$1,109	92	2.5	\$750	15.1
50057		182	0.7	\$232	10	0.3	\$229	5.5
50062		635	2.6	\$1,044	28	0.8	\$2,440	4.4
50116		230	0.9	\$699	25	0.7	\$2,832	10.9
50119		341	1.4	\$748	47	1.3	\$1,201	13.8
50138		13,516	54.9	\$546	841	22.9	\$973	6.2
50163		861	3.5	\$246	26	0.7	\$867	3.0
50214		376	1.5	\$514	112	3.0	\$911	29.8
50219		5,207	21.1	\$1,152	2,398	65.2	\$1,462	46.1
50225		2,228	9.0	\$546	61	1.7	\$971	2.7
50256		451	1.8	\$341	38	1.0	\$652	8.4
Marion Total		24,637	100.0	\$688	3,678	100.0	\$1,305	14.9
Iowa Total		24,637	100.0	\$688	3,678	100.0	\$1,305	14.9
Report Totals:		24,637	100.0	\$688	3,678	100.0	\$1,305	14.9

Rehab Services (Therapy)

 We care about Iowa's health								
Patient Type: Outpatient Place of Service: Therapy Template Name: Market and Facility Report Name: PRHC 2023 CHNA Therapy Facility: Pella Regional Health Center Market Area: Marion Therapy 2017-2019 Time Period: 2020 Q1 through 2022 Q4		Marion Therapy 2017-2019 % of Measures Col. Avg. Charges		Pella Regional Health Center % of Measures Col. Avg. Charges			Market Share	
State/County/ZIP code		Measures	Col.	Avg. Charges	Measures	Col.	Avg. Charges	Market Share
Iowa								
Marion								
50044		602	2.4	\$1,277	342	2.3	\$1,261	56.8
50057		169	0.7	\$1,082	28	0.2	\$1,096	16.6
50062		474	1.9	\$1,124	135	0.9	\$1,183	28.5
50116		152	0.6	\$1,218	71	0.5	\$1,092	46.7
50119		305	1.2	\$1,057	190	1.3	\$1,020	62.3
50138		10,782	43.6	\$1,189	4,496	30.0	\$1,168	41.7
50163		489	2.0	\$1,364	90	0.6	\$1,643	18.4
50214		469	1.9	\$1,047	406	2.7	\$1,034	86.6
50219		9,538	38.5	\$1,173	8,698	58.0	\$1,140	91.2
50225		1,401	5.7	\$1,270	290	1.9	\$1,072	20.7
50256		375	1.5	\$1,209	249	1.7	\$1,160	66.4
Marion Total		24,756	100.0	\$1,187	14,995	100.0	\$1,149	60.6
Iowa Total		24,756	100.0	\$1,187	14,995	100.0	\$1,149	60.6
Report Totals:		24,756	100.0	\$1,187	14,995	100.0	\$1,149	60.6

CHA Survey Detailed Survey, Findings (Primary Research)



Pella Regional Health
Center Community Hk

Healthcare Perceptions & Satisfaction for Pella Regional Health Center and Marion County, Iowa

The leadership of Pella Regional Health Center and Marion County Public Health invite you to help improve the care and services in our community. Please help by answering a few questions. Please answer honestly and your responses will be kept confidential.

Thank you again for your participation.

** Indicates required question*

1. In general, how would you rate the overall quality of the healthcare delivered to your ^{*} community?

Mark only one oval per row.

	Very Good	Good	Fair	Poor	Very Poor
Overall quality of care	<input type="radio"/>	<input type="radio"/>	<input type="radio"/>	<input type="radio"/>	<input type="radio"/>

2. How would you rate the following healthcare services? (Please select one box for each row)

Mark only one oval per row.

	Very Good	Good	Fair	Poor	Very Poor	Not Applicable (NA)
Pediatric (child) care	<input type="radio"/>	<input type="radio"/>	<input type="radio"/>	<input type="radio"/>	<input type="radio"/>	<input type="radio"/>
Chiropractor	<input type="radio"/>	<input type="radio"/>	<input type="radio"/>	<input type="radio"/>	<input type="radio"/>	<input type="radio"/>
Dentist(s)	<input type="radio"/>	<input type="radio"/>	<input type="radio"/>	<input type="radio"/>	<input type="radio"/>	<input type="radio"/>
Eye Doctor / Optometrist	<input type="radio"/>	<input type="radio"/>	<input type="radio"/>	<input type="radio"/>	<input type="radio"/>	<input type="radio"/>
Family Planning Services	<input type="radio"/>	<input type="radio"/>	<input type="radio"/>	<input type="radio"/>	<input type="radio"/>	<input type="radio"/>
Family Practice (Medical) Services	<input type="radio"/>	<input type="radio"/>	<input type="radio"/>	<input type="radio"/>	<input type="radio"/>	<input type="radio"/>
Home Care Agencies / Home Health	<input type="radio"/>	<input type="radio"/>	<input type="radio"/>	<input type="radio"/>	<input type="radio"/>	<input type="radio"/>
Hospice	<input type="radio"/>	<input type="radio"/>	<input type="radio"/>	<input type="radio"/>	<input type="radio"/>	<input type="radio"/>
Hospital Services	<input type="radio"/>	<input type="radio"/>	<input type="radio"/>	<input type="radio"/>	<input type="radio"/>	<input type="radio"/>
Nursing Home	<input type="radio"/>	<input type="radio"/>	<input type="radio"/>	<input type="radio"/>	<input type="radio"/>	<input type="radio"/>
Pharmacy	<input type="radio"/>	<input type="radio"/>	<input type="radio"/>	<input type="radio"/>	<input type="radio"/>	<input type="radio"/>
Public Health	<input type="radio"/>	<input type="radio"/>	<input type="radio"/>	<input type="radio"/>	<input type="radio"/>	<input type="radio"/>
School Nurse	<input type="radio"/>	<input type="radio"/>	<input type="radio"/>	<input type="radio"/>	<input type="radio"/>	<input type="radio"/>

Teen health (drinking, abuse, safety, pregnancy)	<input type="radio"/>	<input type="radio"/>	<input type="radio"/>	<input type="radio"/>	<input type="radio"/>	<input type="radio"/>
Child (day) care services	<input type="radio"/>	<input type="radio"/>	<input type="radio"/>	<input type="radio"/>	<input type="radio"/>	<input type="radio"/>

3. In your opinion, how much of a problem are the following causes of poor health in your community? (please select one box for each row)

Mark only one oval per row.

	Not a problem	Somewhat of a problem	Major problem	Don't know
Cancer	<input type="radio"/>	<input type="radio"/>	<input type="radio"/>	<input type="radio"/>
Diabetes	<input type="radio"/>	<input type="radio"/>	<input type="radio"/>	<input type="radio"/>
Drug Abuse	<input type="radio"/>	<input type="radio"/>	<input type="radio"/>	<input type="radio"/>
Substance Abuse	<input type="radio"/>	<input type="radio"/>	<input type="radio"/>	<input type="radio"/>
Heart Disease	<input type="radio"/>	<input type="radio"/>	<input type="radio"/>	<input type="radio"/>
Mental illness	<input type="radio"/>	<input type="radio"/>	<input type="radio"/>	<input type="radio"/>
Obesity	<input type="radio"/>	<input type="radio"/>	<input type="radio"/>	<input type="radio"/>
Pneumonia / Flu	<input type="radio"/>	<input type="radio"/>	<input type="radio"/>	<input type="radio"/>
Respiratory Disease	<input type="radio"/>	<input type="radio"/>	<input type="radio"/>	<input type="radio"/>
Sexually Transmitted Diseases	<input type="radio"/>	<input type="radio"/>	<input type="radio"/>	<input type="radio"/>
Stroke	<input type="radio"/>	<input type="radio"/>	<input type="radio"/>	<input type="radio"/>
Suicide	<input type="radio"/>	<input type="radio"/>	<input type="radio"/>	<input type="radio"/>
Trauma	<input type="radio"/>	<input type="radio"/>	<input type="radio"/>	<input type="radio"/>

4. Other health problems in your community not listed above?

5. In your opinion, what areas need additional education or attention in our community? (Please select all that apply)

Check all that apply:

- Abuse / Violence
- Aging (Dementia)
- Alcohol
- Alternative Medicine
- Child (day) care
- Chronic Diseases (example Diabetes or Heart Failure)
- Drugs/Illegal substances
- Family Planning / Birth Control
- Lead Exposure
- Mental Illness
- Neglect
- Nutrition
- Obesity
- Pain Management
- Pediatric (child) care
- Poverty
- Preventative Health
- Sexually Transmitted Diseases
- Suicide
- Teen Health (drinking, abuse, safety, pregnancy)
- Tobacco Use
- Uninsured / Underinsured
- Vaccinations
- Wellness Education
- Other: _____

6. How would you rate each of the following in your community?

Mark only one oval per row.

	Very Good	Good	Fair	Poor	Very Poor	Not aware of the services
Caregiver training programs/support groups	<input type="radio"/>	<input type="radio"/>	<input type="radio"/>	<input type="radio"/>	<input type="radio"/>	<input type="radio"/>
Early childhood development programs	<input type="radio"/>	<input type="radio"/>	<input type="radio"/>	<input type="radio"/>	<input type="radio"/>	<input type="radio"/>
Prevention of falls	<input type="radio"/>	<input type="radio"/>	<input type="radio"/>	<input type="radio"/>	<input type="radio"/>	<input type="radio"/>
Obesity prevention and treatment	<input type="radio"/>	<input type="radio"/>	<input type="radio"/>	<input type="radio"/>	<input type="radio"/>	<input type="radio"/>
Spiritual health support	<input type="radio"/>	<input type="radio"/>	<input type="radio"/>	<input type="radio"/>	<input type="radio"/>	<input type="radio"/>
Drug abuse programs	<input type="radio"/>	<input type="radio"/>	<input type="radio"/>	<input type="radio"/>	<input type="radio"/>	<input type="radio"/>
Reduction of opiate/narcotic use	<input type="radio"/>	<input type="radio"/>	<input type="radio"/>	<input type="radio"/>	<input type="radio"/>	<input type="radio"/>
Alcohol use and treatment programs	<input type="radio"/>	<input type="radio"/>	<input type="radio"/>	<input type="radio"/>	<input type="radio"/>	<input type="radio"/>
Transportation (bus) services in community	<input type="radio"/>	<input type="radio"/>	<input type="radio"/>	<input type="radio"/>	<input type="radio"/>	<input type="radio"/>
Violence prevention	<input type="radio"/>	<input type="radio"/>	<input type="radio"/>	<input type="radio"/>	<input type="radio"/>	<input type="radio"/>

Healthcare Services

7. How do you feel your local health care providers are doing in addressing the health needs of the following age groups? (Please select one box for each row)

Mark only one oval per row.

	Very Good	Good	Fair	Poor	Very Poor	Not Applicable (NA)
Infants	<input type="radio"/>	<input type="radio"/>	<input type="radio"/>	<input type="radio"/>	<input type="radio"/>	<input type="radio"/>
Age 1 - 12	<input type="radio"/>	<input type="radio"/>	<input type="radio"/>	<input type="radio"/>	<input type="radio"/>	<input type="radio"/>
Age 13 - 17	<input type="radio"/>	<input type="radio"/>	<input type="radio"/>	<input type="radio"/>	<input type="radio"/>	<input type="radio"/>
Age 18 - 25	<input type="radio"/>	<input type="radio"/>	<input type="radio"/>	<input type="radio"/>	<input type="radio"/>	<input type="radio"/>
Age 26 - 44	<input type="radio"/>	<input type="radio"/>	<input type="radio"/>	<input type="radio"/>	<input type="radio"/>	<input type="radio"/>
Age 45 - 64	<input type="radio"/>	<input type="radio"/>	<input type="radio"/>	<input type="radio"/>	<input type="radio"/>	<input type="radio"/>
Age 65 - 84	<input type="radio"/>	<input type="radio"/>	<input type="radio"/>	<input type="radio"/>	<input type="radio"/>	<input type="radio"/>
Over 85	<input type="radio"/>	<input type="radio"/>	<input type="radio"/>	<input type="radio"/>	<input type="radio"/>	<input type="radio"/>

8. How would you rate the following public healthcare services? (Please select one box in each row)

Mark only one oval per row.

	Very Good	Good	Fair	Poor	Very Poor	Not Applicable
Emergency preparedness	<input type="radio"/>	<input type="radio"/>	<input type="radio"/>	<input type="radio"/>	<input type="radio"/>	<input type="radio"/>
Food and nutrition services (WIC programs)	<input type="radio"/>	<input type="radio"/>	<input type="radio"/>	<input type="radio"/>	<input type="radio"/>	<input type="radio"/>
Health screenings	<input type="radio"/>	<input type="radio"/>	<input type="radio"/>	<input type="radio"/>	<input type="radio"/>	<input type="radio"/>
Access to services	<input type="radio"/>	<input type="radio"/>	<input type="radio"/>	<input type="radio"/>	<input type="radio"/>	<input type="radio"/>
Prenatal / child health programs	<input type="radio"/>	<input type="radio"/>	<input type="radio"/>	<input type="radio"/>	<input type="radio"/>	<input type="radio"/>
Sexually transmitted disease testing	<input type="radio"/>	<input type="radio"/>	<input type="radio"/>	<input type="radio"/>	<input type="radio"/>	<input type="radio"/>
Tobacco prevention / cessation programs	<input type="radio"/>	<input type="radio"/>	<input type="radio"/>	<input type="radio"/>	<input type="radio"/>	<input type="radio"/>
Women's wellness programs	<input type="radio"/>	<input type="radio"/>	<input type="radio"/>	<input type="radio"/>	<input type="radio"/>	<input type="radio"/>

9. How would you rate the following healthcare services? (Please select one box in each row)

Mark only one oval per row.

	Very Good	Good	Fair	Poor	Very Poor	Not Applicable (NA)
Ambulance Services	<input type="radio"/>	<input type="radio"/>	<input type="radio"/>	<input type="radio"/>	<input type="radio"/>	<input type="radio"/>
Emergency Room	<input type="radio"/>	<input type="radio"/>	<input type="radio"/>	<input type="radio"/>	<input type="radio"/>	<input type="radio"/>
Family Practice/Medical (clinic) services	<input type="radio"/>	<input type="radio"/>	<input type="radio"/>	<input type="radio"/>	<input type="radio"/>	<input type="radio"/>
Hospital services	<input type="radio"/>	<input type="radio"/>	<input type="radio"/>	<input type="radio"/>	<input type="radio"/>	<input type="radio"/>
Mental health services	<input type="radio"/>	<input type="radio"/>	<input type="radio"/>	<input type="radio"/>	<input type="radio"/>	<input type="radio"/>
Outpatient services (lab, radiology, etc.)	<input type="radio"/>	<input type="radio"/>	<input type="radio"/>	<input type="radio"/>	<input type="radio"/>	<input type="radio"/>
Specialist physician care	<input type="radio"/>	<input type="radio"/>	<input type="radio"/>	<input type="radio"/>	<input type="radio"/>	<input type="radio"/>

10. Are there health care services in your community or neighborhood that you feel need to be improved and or changed? (Please be specific)

11. Over the past 2 years, did you or someone from your household, receive health care services outside of your county? *

Mark only one oval.

Yes Skip to question 12

No Skip to question 14

Additional County Services

12. Please list the health care services you or your household member(s) have received outside of your county.

13. If offered, would you have received the services locally?

Mark only one oval.

Yes

No

Maybe

CHANGES TO HEALTH SERVICES

Over the last few years, Pella Regional Health Center and Marion County Public Health have been working to provide ongoing valuable services to the community. Please help us determine the improvements over the last three (3) years.

14. Please rate the following areas for your community.

Mark only one oval per row.

	Not a problem anymore	Somewhat a problem	Still a problem
Care coordination and expanding rural care	<input type="radio"/>	<input type="radio"/>	<input type="radio"/>
Access to mental health services at the hospital	<input type="radio"/>	<input type="radio"/>	<input type="radio"/>
Access, diagnosis, and placement for mental health services in the community	<input type="radio"/>	<input type="radio"/>	<input type="radio"/>
Lack of qualified healthcare workers seeking employment	<input type="radio"/>	<input type="radio"/>	<input type="radio"/>
Increased Medicaid reimbursement	<input type="radio"/>	<input type="radio"/>	<input type="radio"/>
Substance abuse - Opioid / narcotic use	<input type="radio"/>	<input type="radio"/>	<input type="radio"/>
Illegal drug and alcohol use	<input type="radio"/>	<input type="radio"/>	<input type="radio"/>
Community health education (personal health)	<input type="radio"/>	<input type="radio"/>	<input type="radio"/>

15. Which health needs are most pressing TODAY and are in need of improvement?

Check all that apply.

- Wellness options (example healthy lifestyle, food options, exercise, check-ups, screenings)
- Public awareness of healthcare services
- Mental Health / Counseling services
- Public transportation for healthcare
- After hours pharmacy services
- Nutritional education
- Home health / public health
- Hospice
- Dental services
- Obstetrics (family planning and prenatal care) services
- Access to urgent care services
- Healthy eating options
- Cancer services
- Chronic disease prevention (example diabetes or heart failure)
- Elder assistance programs
- Family assistance programs
- Care transitions (movement from one healthcare setting to another or home)
- Other: _____

YOUR HEALTH

16. In general, how would you best describe your health? (Please select only one)

Mark only one oval per row.

	Very Good	Good	Fair	Poor	Very Poor
Description of your personal health	<input type="radio"/>	<input type="radio"/>	<input type="radio"/>	<input type="radio"/>	<input type="radio"/>

17. Compared to a year ago, how would you rate your overall health now?

Mark only one oval per row.

	Much better than a year ago	About the same	Much worse than a year ago
Change in health	<input type="radio"/>	<input type="radio"/>	<input type="radio"/>

18. Does your household have a provider you use for primary care (clinic visits)?

Mark only one oval.

- Yes
- No

19. Have you had a physical in the past 12 months?

Mark only one oval.

- Yes
- No

20. If you have not had a physical, please provide the specific reason.

22. Please complete sentence below - "Are you..."

Mark only one oval per row.

	Yes	No	Not Applicable (NA)
Eating right (Daily, 5 servings of fruits, vegetables, wheat)	<input type="radio"/>	<input type="radio"/>	<input type="radio"/>
Using tobacco products weekly	<input type="radio"/>	<input type="radio"/>	<input type="radio"/>
Exercising 2-3 times weekly	<input type="radio"/>	<input type="radio"/>	<input type="radio"/>
Consuming alcohol (more than 1 drink daily)	<input type="radio"/>	<input type="radio"/>	<input type="radio"/>
Receiving an annual flu shot	<input type="radio"/>	<input type="radio"/>	<input type="radio"/>
Been without a place to stay for multiple nights (homeless)	<input type="radio"/>	<input type="radio"/>	<input type="radio"/>
Having difficulty with employment due to transportation, education, skills, childcare, scheduling, etc	<input type="radio"/>	<input type="radio"/>	<input type="radio"/>

23. Please mark if you have ever felt...

Mark only one oval per row.

	Yes	No
In the last 12 months, did you ever eat less than you felt you should because there wasn't enough money for food?	<input type="radio"/>	<input type="radio"/>
In the last 12 months, has your utility company shut off your service for not paying your bills?	<input type="radio"/>	<input type="radio"/>
Are you worried that in the next 2 months, you may not have housing?	<input type="radio"/>	<input type="radio"/>
Do problems getting child care make it difficult for you to work or study? (leave blank if you do not have children)	<input type="radio"/>	<input type="radio"/>
In the last 12 months, have you needed to see a doctor, but could not because of cost?	<input type="radio"/>	<input type="radio"/>

24. What type of healthcare facility do you use when not feeling well or sick?

Mark only one oval.

- Clinic/Doctor's office
- Emergency Department
- Urgent-care/Walk-in Care
- Tele-health / Virtual Visits
- Public Health Department
- Don't seek care/medical treatment
- Other: _____

ABOUT YOU

Please provide a bit more information about who you are so we can better serve the community.

25. What is your age?

Mark only one oval.

- 17 and under
- 18 to 25
- 26 to 44
- 44 to 64
- 65 to 84
- 85 and over

26. Your gender

Mark only one oval.

- Female
- Male
- Prefer not to say

27. How would you identify yourself?

Mark only one oval.

- Caucasian / White
- African American / Black
- Latino / Hispanic
- Indian / Native Alaskan
- Asian / Pacific Islander
- Multicultural / Multiracial
- Other: _____

28. How would you describe your household? (Please select all that apply)

Check all that apply.

- Single
- Married
- Parent / Guardian with children at home
- Married with children no longer at home
- Divorced
- Widowed
- Other: _____

29. Regarding your health insurance coverage, what type of health coverage is your primary plan? (Choose one)

Mark only one oval.

Private Insurance you purchased

Covered by employer (employer pays total cost)

Partially covered by employer (you and employer share cost)

Medicare

Medicaid

No coverage (uninsured)

30. Where do you get most of your medical information?

Mark only one oval.

Doctor

Internet

Friend(s)

Family

Social media

Television

Radio

Insurance company

31. For reporting purposes, are you involved in or are you a... (Please check all that apply)

Check all that apply.

Board member (local health organization)

Business / Merchant

Civic club member

Clergy / Congregational Leader

College / University student

Construction / Housing / Builder

Consumer of healthcare services

Education official / Teacher

Economic Development/Government

Farmer / Rancher

Health Department

Healthcare Provider

Hospital or Clinic employee

Insurance industry

Laborer

Law Enforcement

Parent / Caregiver

Student (high school)

Veteran

Other: _____

32. What is your home 5 digit zip code? *

THANK YOU

(for paper only) If filling this with a paper form, please return the complete survey with enclosed business reply envelope.

33. Please provide today's date.

Town Hall Meeting Outcomes (Primary Research)

Top Priorities (votes for top actions)

<p>1. Mental Health: Increase the provided and breadth of services for Mental Health needs in the communities. Mental Health needs: increase providers, access, employment for providers, reimbursement shortage – barrier for services, community responses (example: EMT), and transportation to and from services in other communities.</p>
<p>2. Substance Abuse: Reduce the concern for and presence of substance abuse related health/safety issues. Drugs and substance use and presentation services/response Ranking high in use of substances within the communities, health/safety concerns related to substance use, and decreased access to services.</p>
<p>3. Workforce Shortages: Collaborating with community partners to attract and retain healthcare and other employees to the county. Housing for low-income workers available to the communities.</p>
<p>4. Childcare Services/ Access: Continue to address the access to childcare services within the communities. Continue to work with Partnership study.</p>
<p>5. Transportation services: Continue to address the needs of transportation services for emergency management and medical treatment needs for the community, including but not limited to the elderly in the communities.</p>
<p>6. Health and Housing Stability Coalition for County Continue to work on services for the elderly in the community including housing, In-home support, Staffing, Day/acute services, and funding resources</p>

Implementation of 2023 Priorities in Action Plan – listed prior in report.

CONTACT INFORMATION AND QUESTIONS

Hospital Contact

Andrea Baker, Pella Regional Health Center, Marketing Director
 Address: 404 Jefferson St, Pella, IA 50219.
 Phone: (641) 628-3150

Public Health Contact

Kim Dorn, Marion County Public Health, Director
 Address: 2003 N Lincoln St, Knoxville, IA 50138.
 Phone: (641) 828-2238 ext. 3850

Consultant Contact

Sarah Pavelka, Pavelka's Point Consulting, LLC

Cedar Falls, Iowa

email: pavelkaspoinconsulting@gmail.com

Phone: 641-780-0180

-----End of Report-----