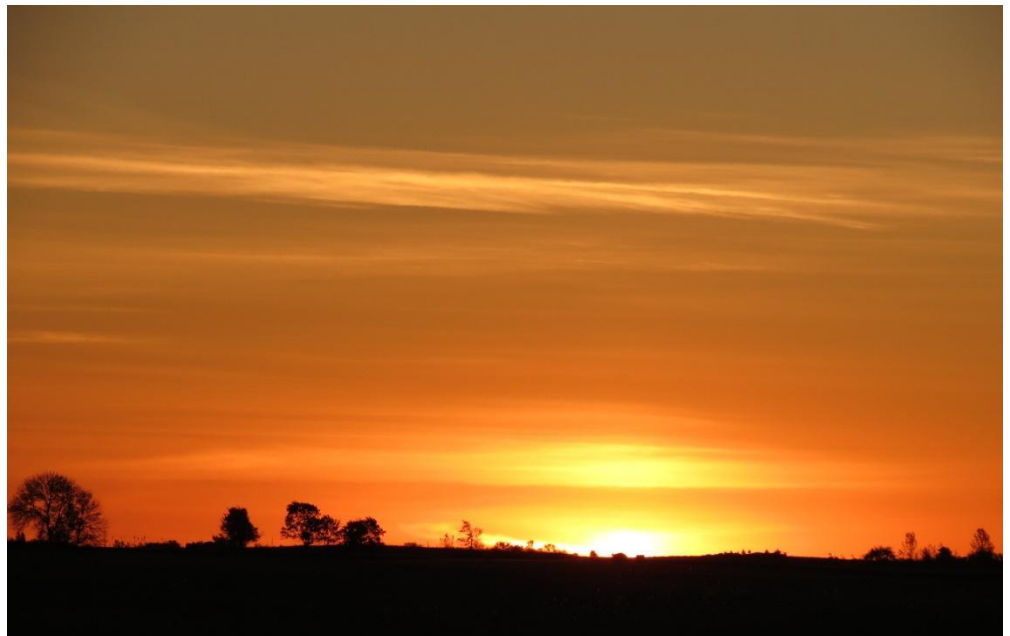


COMMUNITY HEALTH ASSESSMENT



2023

Marshall County, Iowa

Community Health Assessment

MARSHALL COUNTY, IOWA

CONTENTS

EXECUTIVE SUMMARY	6
2023 Community Health Assessment (CHA).....	6
Community Health Assessment Strengths.....	7
Marshall County Public Health Department	7
Primary Service Area/Community Health Strengths	7
Town Hall - Community Health Opportunities Identified.....	7
Town Hall Outcomes - Community Health Opportunities	7
Community Health Assessment Survey - General Feedback.....	8
Community Health Assessment Survey - Results of Opportunities.....	8
CHA Survey – Needs for Health Concerns	8
Iowa Health Rankings: Marshall County Public Health.....	9
METHODOLOGY	11
Scope and Purpose.....	11
Assessing Community Health Needs	11
Process to Complete a CHA	11
Steps in Process for CHA including Timelines / Milestones	12
Model for Needs Assessment Process and Steps.....	13
closely aligned to above stages of the process.....	13
Community Served / Profile Description	13
Marshall County, Iowa Community Map.....	13
Portion of Marshall County, Iowa for Needs Assessment - Specifics.....	13
Detailed Demographics – Marshall County, Iowa	14
Collaborating CHA Parties.....	15
Marshall County Public Health Department Profile	15
Pavelka’s Point Consulting, LLC – External Consulting Services	15
Community Health Assessment Process.....	16
Agreement/Contracting/Community Leadership (CHA Steps 1 – 3).....	16

Create the assessment, survey, and evaluation process (CHA Steps 4).....	17
Collect the Data (CHA Steps 5)	17
Community Press Release	17
Employee and Community Communications	19
Analyze the Data (CHA Steps 5 continued)	19
Town Hall Research Process (Engage & Prioritize with Stakeholders)	19
Document and Define Priorities (CHA Steps 6)	19
Town Hall General Public Invite (letter).....	20
Town Hall Agenda	21
Town Hall PowerPoint Presentation.....	21
Town Hall Attending Key Stakeholders (Engagement and Prioritization)	21
Town Hall Outcomes	22
Community Strategy Formulation and Action Planning	23
Planning for Improvement Strategies (CHA Steps 7 & 8).....	23
Prior Assessment Action Plans.....	24
Evaluation of Progress on Key Priorities and Strategic Alignment (CHA Step 9)	25
COMMUNITY (SERVICE AREA) HEALTH STATUS	25
Primary Research Findings	25
Replies by zip.....	25
Overall Quality of Services In the Community (SERVICE AREA).....	26
Rating of Health Services	26
Causes of disease or disability in the community.....	27
Health needs by age.....	27
Health services outside of the county	28
Improvement of Services	29
Three year Action Plan Improvements	29
Pressing issues for today’s improvements.....	30
Rating of Services for community – Public Health and other	31
Personal Health Needs: Survey Results.....	33
Personal Health Needs: Health Description.....	33
Personal health needs: Social Determinants of health.....	33
Personal Health needs: Overall health – 2 year comparison.....	34
Personal health needs: Health practices	34
Personal Health Needs: Health Practices.....	34
Primary Data (Survey) Demographics of Participants 2023.....	35
Age	35
Gender	35
Identity.....	35
Household	35
Insurance.....	36

Involvement in community	36
Secondary Research Findings 2023.....	37
Overall state Health rankings	37
Demographic details: population age, gender, ethnic affiliation (1a)	37
Economic details (2).....	38
Public schools health delivery (3a and 3b)	39
Maternal and Infant Health (4a and 4b)	41
Live births (4B)	41
Hospital Specific Details (5).....	42
Behavioral and Mental health Profile	42
Health Behaviors Profile (7)	42
Mortality Profiles	43
Cause of Death -5 year totals.....	43
Preventative Health (County Health Rankings)	43
Uninsured Profiles (Source: Iowa Health Fact Book).....	43
Inventory of Community (Service Area) Health Partners	44
Community (Service Area) Resources – Inventory of Services	49
Providers Delivering Care – Marshall County, Iowa	51
Care Delivery	51
Service Directory	52
Emergency Numbers.....	52
Non-Emergency /Municipal Numbers (MARSHALL COUNTY, IOWA)	53
Quick REference Phone guide	53
General Online Health Resources	53
Doctors and Dentists—General.....	53
Hospitals and Clinics—General.....	54
Doctors and Dentists—Specialists.....	54
Other Healthcare Providers.....	54
Hospitals and Clinics—Specialized	54
Other Healthcare Facilities and Services	56
DATA DETAILS	56
Plan Tactics for Marshall County, Iowa – 2017 to 2023	56
CHA Survey Detailed Survey, Findings (Primary Research)	57
Town Hall Meeting Outcomes (Primary Research).....	73
Power Point Presentation from Town Hall.....	73
Top Priorities (votes for top actions).....	77
Implementation of Priorities in Action Plan – listed prior in report.	77
CONTACT INFORMATION AND QUESTIONS.....	77
Public Health Department Contact	77

Consultant Contact78

EXECUTIVE SUMMARY

2023 Community Health Assessment (CHA)

Community Health Assessments (CHA) are ongoing processes that systematically evaluate the health needs of the community to improve the health of the population. According to the Iowa Department of Health and Human Services (2023), with a more than 30-year history in Iowa, the Public Health Departments are vital to represent and promote local action for the protection and health of their communities. At least every five years, county and local departments are responsible for collecting, analyzing, prioritizing, and acting on behalf of their communities and documenting gap in the health conditions in which they serve (<https://hhs.iowa.gov/cha-chip>). The Community Health Improvement Plan (CHIP) is a strategic document that notes actions to improve such health conditions.

Federal requirements for nonprofit hospitals require some hospitals to conduct a Community Health Assessment every three years. After the passage of the Patient and Protection and Affordable Care Act of 2012, 501 (c)(3) health organizations were given four new tax requirements to begin in tax years after March 23rd, 2012 (Stall, 2012). It is best practice to have the local public health and other health organizations join forces in the collaborative effort and partnership. Both groups in the system will gain from the efforts and relationship. These groups share a common goal of a healthier community.

The benefits of a Community Health Assessment, for both health department and the community, were stated in the following methods:

1. Identify key community (service area) health concerns, perceptions, and resources, while creating opportunities for collaboration in delivery of services.
2. Find a collective understanding of and analyze community (service area) health needs, then prioritize with implementation strategies.
3. Provides guidance to all health-related organizations for how they can align their services and community benefit programs to best meet needs.
4. Focus organization's efforts for improvement and structure for addressing social determinates of health in building a relationship between and among stakeholders. All stakeholders can then contribute to improving the health of the community.
5. Provides rationale for current and potential funders to support efforts to improve the health of the community.

Iowa Department of Health and Human Services. (2023). Community Health Assessments and Improvement Planning. <https://hhs.iowa.gov/cha-chip>

Stall, E. (2012). Community Health Assessment: 5 Phases to Compliance. Retrieved from <https://www.beckershospitalreview.com/legal-regulatory-issues/community-health-needs-assessment-5-phases-to-compliance.html>

Community Health Assessment Strengths

Marshall County Public Health Department Primary Service Area/Community Health Strengths
1. Community Preparedness: Recent events in Marshall County have demonstrated that the county is prepared for emergency situations. However more financial resources are always a need within the community
2. Access to Care: The community supported that there is an improvement over the past 5 years for more community health services.
3. Lead exposure/Air Quality/Water Quality: Improvement in the local and regional areas in the area of environmental exposures. (Source: County Health Rankings, 2023)
4. Vaccination: County health officials and community partners have demonstrated the benefits of partnership over the last 3 to 5 years for improvement in rates and preventative vaccinations in the communities.
5. Preventative health measures: Improvement in overall health measures demonstrates the community is partner to provide increase preventive health services. Customer access and use is still limited.
6. Aging Services: Services and health improvement for the elderly populations has been a focus for several years as a larger consumer of primary and specialty care in the community. Also services for long-term placement and even in-home services in the community have been a focus on increasing resources.

Town Hall - Community Health Opportunities Identified

Town Hall Outcomes - Community Health Opportunities
1. Mental Health: Increase the provided and breadth of services for Mental Health needs in the communities.
2. Limited maternal and child health services: Local and community services for mothers and children’s services. These include pre- and post-natal services.
3. Affordability of health services/ health insurance coverage: Working with local groups for affordable coverage for all residents of the county. This includes employment that provides affordable health coverage.
4. Housing for families (low-income options): Explore housing options for all residents of the communities including low-income housing options.
5. Childcare services and access: Assessment of childcare services in the community and options for residents
6. Education and assistance with health system navigation for underserved population/ cultures.

Community Health Assessment Survey - General Feedback

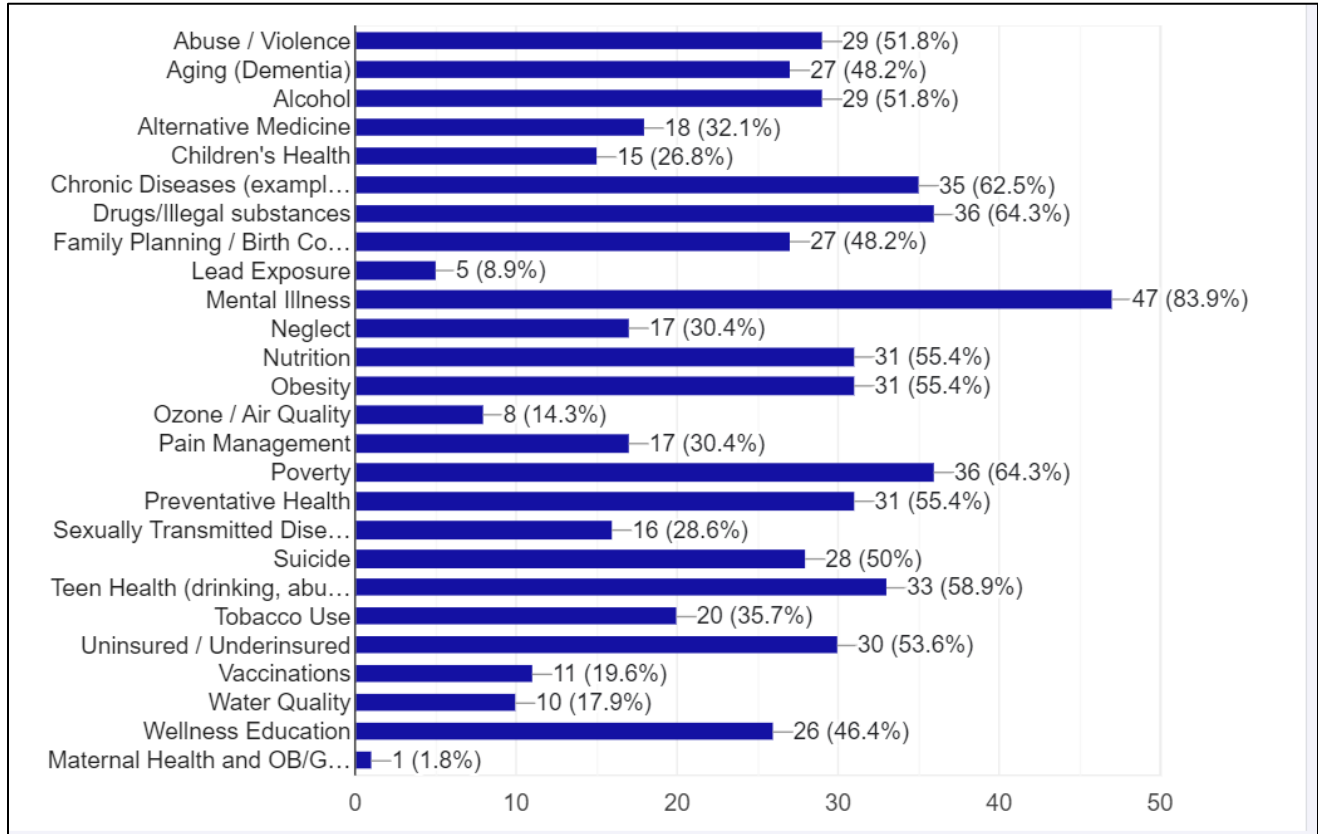
The following were general feedback sections from the Community Health Assessment Survey in which nearly 57 community (service area) participants completed the survey either via paper or electronic formats. The details of the survey process can be found later in this report.

- The percent of Marshalltown and Marshall County, Iowa survey participants who would rate the overall quality of care as either Very Good or Good is 47%, and 35% state fair health.
- Marshall County, Iowa survey participants are satisfied with the following health services: Ambulance Services/ ER services, Chiropractor, Eye Doctor, Pharmacy, Hospice, Public Health, School Nursing, and Dentists.
- Marshall County, Iowa survey participants are NOT satisfied or neutral with the following services: Mental Health, Teen health, health specialists, home care, family practice, nursing homes, hospital services, family planning, and child and young adult health services.
- The percentage of participants who have received healthcare services outside of the community over the past two years was 89.5%. Of those that provided the type of service here are the services in which they traveled out of the community: Obstetrics, Surgery, Specialty (Cardiac, Urology, Orthopedics, Dermatology, Oncology, Neurology), and treatment for Chronic Diseases.
- Marshall County, Iowa participants believed there are opportunities for both health concerns and programs to combat the health concerns. The top perceptions of needs are listed in the following two tables as Results of Opportunities.

Community Health Assessment Survey - Results of Opportunities

CHA Survey – Needs for Health Concerns	
1. Mental health / Mental Illness (83.3%)	2. Drug/Illegal substances (66.7%)
3. Underinsured (66.7%)	4. Obesity (66.7%)
5. Chronic disease (58.3%)	6. Poverty (58.3%)
7. Teen health (58.3%)	8. Alcohol use and abuse/ Tobacco use (41.7%)
9. Family planning (41.7%)	10. Nutrition and Wellness education (41.7%)

Responses from Community Health Assessment Survey (2023)



Iowa Health Rankings: Marshall County Public Health

According to the 2023 Robert Wood Johnson County Health Rankings study, Marshall County, Iowa has the following comparisons. More details can be found in later sections of this report.

- Demographics and Age:** Marshall County, Iowa has a population of 40,105 residents as of 2020, a decrease of 0.6% since 2010. The county population consists of 18.6% at or over the age of 65 years, a decrease of 0.2% since 2010 and the state average is 17.1%. In the under 18 age group the rate is at 25.3%, down from the 2010 number of 25.8%. The county is considered 46.7% rural (state 36.0% rural).
- Diversity:** Marshall County, Iowa has 22.8% of the population that is considered English as a second language. The county has approximately 22.8% Hispanic population, and 2% African American, 0.4% American Indian, and 3.8% Asian. Females make up approximately 49.6% of the population.
- Income:** Marshall County, Iowa median household income is \$63,757 (Iowa average of \$65,600) and unemployment is at 6.5% (Iowa 4.2%). Regarding the effects of income on the children in the county, 14% of the children live in poverty and over 61% are eligible for free or reduced-price lunches (2017 – 55% were eligible and Iowa average of 41%).

- **Housing and Commutes:** The county is rated with 11% severe housing issues (Iowa overall at 12%). For employment, 19% of the population have long commutes to work and 78% drive alone (Iowa is at 21% and 79% respectively).
- **Education:** The percentage of high school graduation is at 92% and a strength in county rankings (Iowa 92%). For college education, Marshall County, Iowa has 52% of the population with some college (Iowa 70%).
- **Prenatal Care:** According to the Iowa Health Fact Book, as of March 2021, 774 mothers started Prenatal care in the first trimester, for a ranking of 13 out of the 99 counties in Iowa. The number of mothers that smoked during pregnancy was 74, for an Iowa rank of 84th.
- **Primary Care and Hospital Services:** The ratio of population to primary care providers was slightly worse than 2017 report with 2,190 residents to 1 provider (Iowa ratio of 1,360:1, 2017 ratio was 1,040:1). Preventable Hospital stays were below the Iowa number at 1,562 stays (Iowa 2,400).
- **Insured:** The uninsured adult population rate in Marshall County, Iowa is 9%, slightly lower than the Iowa rate of 6%, however lower than 2017 reports by 11%. The uninsured rate for children is 4%, higher than the Iowa rate of 3%.
- **Access:** Access to exercise opportunities is 81% (above the Iowa rate of 79%) and food insecurity/food environmental index is at 8.1% (Iowa rate is 8.6%). Mammography screenings are at 49% (Iowa rate is 47%), and in 2017 was at 56% screened. Score of 72% of children at 2 years of age are up to date on complete series of vaccinations, compared to the 71% at the state (source: Iowa Department of Public Health).
- **Health Conditions:**
 - The “Frequent Mental Distress” rate for Marshall County, Iowa is 14%, with an Iowa rate of 14%. According to the National Center for Health Statistics, from the CDC, 12.7% of Americans over the age of 12, had depression and living at or below the poverty level. Noted that individuals in “frequent mental distress” were 2.5 times more likely to have depression (source: https://wwwn.cdc.gov/NHISDataQueryTool/SHS_adult/index.html).
 - All causes of mortality (morbidity and mortality rates) from 2016 to 2020 were 2,488 deaths, with an Iowa ranking of 13, and adjusted rate per 100,000 is 12th in the state of Iowa.
 - Diabetes prevalence is at a rate of 10% (more than Iowa’s rate of 9%).
 - All Cardiovascular Disease rates were 47.8 hospitalizations per 1000 Medicare Beneficiaries (Iowa best county is 23.3/1000 Beneficiaries in the 2020 data). (source: <https://nccd.cdc.gov/DHDSPAtlas/reports.aspx?geographyType=county&state=IA&countyTab#report>)
 - Adult Obesity rates are at the Iowa rate of 38%.
 - Adult smoking is 17%, equal to the Iowa rate, and an increase of 1% since 2017.
 - The physical inactivity rate is 30%, 7% higher than Iowa’s rate. The Access to exercise opportunities is very high at 81%, with the Iowa rate of 79%.

- The percentage of alcohol impaired driving deaths in Marshall County, Iowa is 43%, almost double of the Iowa percentage of 27%. Excessive drinking percentages were below the Iowa rate, at 21% and 25% respectively.

METHODOLOGY

Scope and Purpose

The Iowa Department of Health and Human Services requires that local health departments assess and plan for the needs of the community every five years. The assessment should include key stakeholders in the community including residents and other health providers. The assessment should evaluate the needs of the communities in which is served, paying attention to the special needs of populations that may be currently underserved. The Public Health Department should provide both primary and secondary data to the key stakeholders, assess the community, prioritize, and create a five-year plan for improvement. These key steps are outlined below, and more information found at <https://hhs.iowa.gov/cha-chip/guide-new> .

The Federal Patient Protection and Affordable Care Act requires that each registered 501(c)3 hospitals to conduct a Community Health Assessment (CHA) at least one every three years, share the assessment results with the community, and adopt a strategy to meet the health needs of the community (service area). The IRS Notice 2011-52 can be found at the following link and was followed for the purposes of this process, assessment, and report. <https://www.irs.gov/charities-non-profits/community-health-needs-assessment-for-charitable-hospital-organizations-section-501r3>

Assessing Community Health Needs

To assess the needs of the community (service area) the department must identify the significant health needs, prioritize those health needs, and identify resources potentially available to address them. Health needs of a community include improvement or maintenance of health status across the community, parts, neighborhoods, or population with health disparities. These needs can include financial, access, illness prevention, nutrition or social, behavioral, environmental factors that influence health. Resources can include organization, facilities, and programs within the community.

Process to Complete a CHA

The recommended requirements for the CHA include the method of discovery, qualify community needs, quantify needs, and complete data analysis and comprehensive needs assessment. Federal and State regulations state that the following process must be completed in order to complete a Community Health Assessment (CHA).

1. Adopt a planning structure and identify resources. The planning structure should include a plan development process and staff/technical support plans.
2. Inform the community about the process and its importance; identify and engage stakeholders. From the beginning, stakeholders need to be consulted and actively involved.

3. Identify and secure resources. Resources may include financial and non-financial support from groups whose purposes align with creating a healthier community.
4. Identify data that describes community health status and needs.
5. Gather and analyze the data and develop a Community Health Assessment (CHA) summary report. Share the report with stakeholders.
6. With stakeholder assistance, review the key factors that are important for health and well-being as part of setting health priorities and objectives.
7. Document key points of the stakeholder discussion. Invite broader community participation and input. Include the feedback in the priority decision-making.
8. Develop the action plan/health improvement plan (HIP) that includes goals, objectives, and strategies.
9. Implement, track progress, and sustain the process. Celebrate the milestones.
10. Establish and implement a plan to communicate health needs and goals to the community.
11. Annually evaluate the goals, objectives, strategies, and indicators. Revise and update the needs assessment and health improvement plan.
12. Approve plans and make reports and improvement plans available to the public.

Steps to Complete the CHA

The following is the process steps with milestones that were completed during the Community Health Assessment development. This process and milestones follow closely with the recommendations from the American Hospital Association and are a detailed list of actions taken in the above process per the IRS requirements (Source:

http://www.healthycommunities.org/Education/toolkit/index.shtml#.XC_37lxKg2x).

Steps in Process for CHA including Timelines / Milestones

1. **Agreement and contracting** – discuss critical success factors for CHA process (completed 1/23/2023)
2. **Meeting with community leadership** – planning, methodology, and agreement of scope and services (Completed 1/23/2023)
3. **Identify and engagement of key stakeholders** – define the community and methodology (up to 3/19/2023)
4. **Create and process evaluation (survey/ assessment) methods** – work with organization to develop survey that reflects the community, needs, and priorities (3/19/23 – 3/31/23)
5. **Collect and analyze the data** – including community health issues of past and future (4/1/2023 – 9/30/2023)
6. **Document and communicate priorities** – work with organization to define the priorities and engagement of key stakeholders including a Town Hall meeting(s) (5/23/2023)
7. **Plan improvement strategies** – work with organization for final report and distribution as needed (9/1/2023-10/2/2023)
8. **Organization to implement improvement plans** – work with key stakeholders in community for best practice implementation and success (10/31/2023 and ongoing)

9. Evaluate progress on the key priorities and strategic alignment – reevaluate progress and continual planning for future needs (FY2024 through FY2028)

Model for Needs Assessment Process and Steps

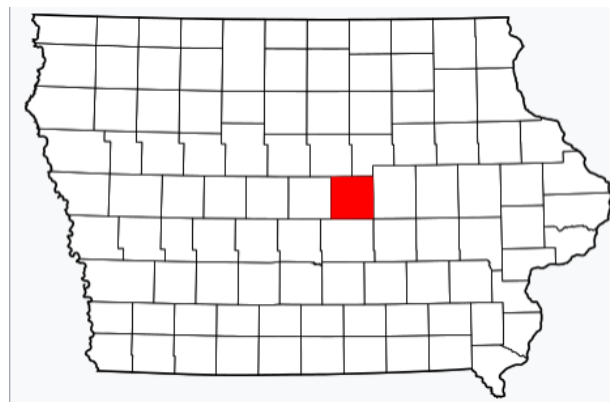
CLOSELY ALIGNED TO ABOVE STAGES OF THE PROCESS



Reference: Association for Community Health Improvement – American Hospital Association

Community Served / Profile Description

Marshall County, Iowa Community Map



Portion of Marshall County, Iowa for Needs Assessment - Specifics

It was determined by the leadership of Marshall County Public Health Department, that the County Community Health Assessment will include those individuals that live or receive health services in

Marshall County, Iowa AND live in the communities of Marshalltown, Iowa. These communities include Albion, Clemons, Ferguson, Gillman, Haverhill, Laurel, Le Grand, Liscomb, Marshalltown, Melbourne, St Anthony, and State Center. This would be the overall (total) population for this process is 40,105 (2020 Census data). A statistically significant sample size for the 90% Confidence interval (n=68) was nearly achieved during the survey phase of the process and represented both demographic, social/economic, religious, and age differences. Efforts were made to ensure that there was a broad interest represented in each of the data collection and prioritization phases; including, translation of the survey to Spanish for those that English is not their first language.

The population of Marshall County, Iowa is 40,105 residents as of 2020, a decrease of -0.6% since 2010. The county is considered 46.7% rural, covering approximately 573 square miles. The population density is approximately 70 people per square mile (Iowa is 54.5 residents per square mile). (Source: <https://www.census.gov/search-results.html?searchType=web&cssp=SERP&q=Marshall%20County,%20Iowa>)

The county population consists of 18.1% at or over the age of 65 years, a decrease of 0.6% since 2020 and the state average is 17.1%. In the under 18 age group, Marshall County, Iowa has a population of 25.3%, a decrease of 0.5% since 2020 and state average is 23.2%.

The communities within Marshall County, Iowa are Albion, Clemons, Ferguson, Gillman, Haverhill, Laurel, Le Grand, Liscomb, Marshalltown, Melbourne, St Anthony, and State Center. Major highways include Iowa Highways 14, 96, 146, 330, US Hwy 30. (source: https://en.wikipedia.org/wiki/Marshall_County,_Iowa#2020_census).

Major types of employment in Marshall County, Iowa are education, health and social services (35.2%), manufacturing (27.7%), agriculture (16.1%), Professional, management, administrative (governmental) (10.5%), and other services (4%) (source: http://www.city-data.com/county/Marshall_County-IA.html).

Detailed Demographics – Marshall County, Iowa

Source: www.city-data.com

Marshall County Iowa

Zip	Name	Pop (2020)	Pop (2010)	Change	House holds	HHAv Size	Income	Med Age	Female	Male	White	Black	Amer Ind	Hisp
50158	Marshalltown	27,583	8,916	14%	5327	2.4	\$76,524	32.9	5,365	4,860	9,728	68	15	175
50247	State Center	2,812	2,417	16%	1093	2.8	\$77,687	40.5	1,472	1,339	2,324	9	4	38
50148	Liscomb	2,756	2,745	<1%	1213	2.4	\$54,695	41.7	1,390	1,366	2,697	6	3	11
50005	Albion	1,358	1,270	7%	517	2.7	\$71,937	41.1	698	659	1,261	2	NR	3
50106	Gilman	1,099	850	29%	333	3.5	\$73,732	33.8	618	481	813	6	NR	4
50120	Haverhill	738	600	23%	248	3.0	\$57,386	40.7	336	401	595	NR	NR	3
	Iowa/Ave					2.8	\$68,660	38.45						

Collaborating CHA Parties

Collaborating with several different agencies in, around, and those that serve Marshall County, Iowa, the CHA was completed. The following is a summary of key stakeholders in the CHA process. A detailed list of individuals or organizations who have played at least one key role in the assessment are listed in Community Health Partners and Resources section of this report.

Marshall County Public Health Department Profile

Address: 101 E Main St Annex Building Marshalltown, IA 50158

Director: Patricia Thompson, BSN, R.N.

Mission Statement: To promote healthy lifestyles and prevent disease and disability by advocating for the physical and mental health, and wellbeing of all citizens in Marshall County.

Vision Statement: Public Health is responsible to safeguard the community's health through assessment, policy development and assurance.

About: More information about Marshall County Public Health Department at <https://www.marshallcountya.gov/451/Public-Health>

Services: Marshall County Public Health information can be found at: <https://www.marshallcountya.gov/451/Public-Health>. Services cover the entire county and are listed below, but not limited to the following:

Breast Cancer Screenings	Immunization Clinics and Child Immunization
Blood Pressure clinics	Injections
Blood draws & specimen collection	Lead prevention programs
Childcare Nurse Consultant	Material, Adolescent and Child health
Children Insurance program	Medication Management
Community Care Coordination	Oral health programs
Emergency Response/Preparedness	Parents as Teachers program
Environmental Health	Patient Education
First Five Healthy Mental Development	Referral to community services
Homemaker services	Skilled Nursing visit by RN
Dressing Changes	Tobacco programs
Homemaker services	WIC

Pavelka's Point Consulting, LLC – External Consulting Services

Address: 5832 West Mt Vernon Road, Cedar Falls, Iowa 50613

CEO: Sarah Pavelka, PhD, MHA, OTR/L, CPHQ, FNAHQ

Bibliography: Sarah Pavelka, PhD, MHA, OTR/L, CPHQ, FNAHQ has over 20 years of experience leading and coaching in organizational performance and continuous improvement in business, industry,

education, and healthcare. Sarah is the CEO/owner of Pavelka's Point Consulting, LLC, and Program Director for Walden University, Master of Healthcare Administration Program.

Dr. Pavelka has professional and academic experiences as a 13-year faculty member for the Masters in Healthcare Administration program at Des Moines University, Improvement Advisor at the Iowa Healthcare Collaborative, and Adjunct Faculty for Upper Iowa University. Her previous professional experiences include the Quality Management Director at the Iowa Foundation for Medical Care, Director of Business and Industry Relations for Pella Regional Health Center, and clinical experience as the Director of the Occupational Therapy department for Pella Regional Health Center in Pella, Iowa.

Dr. Pavelka's extensive volunteer experiences included being a six-time National Baldrige examiner, as well as, a seven-year state examiner for the Iowa Recognition for Performance Excellence. She was also the Director-at-Large for the National Association for Healthcare Quality Board from 2014 to 2016. Sarah was also the Past-president of the Iowa Association for Healthcare Quality Board; a task force member for the Iowa Hospital Association; and a member of the Des Moines University Alumni Board.

Sarah holds degrees in Biology and Psychology from Luther College; an Occupational Therapy degree from Concordia University-Wisconsin; MHA from Des Moines University, and a Ph.D. from Walden University. She is a Fellow for the National Association for Healthcare Quality (FNAHQ); a Certified Professional in Healthcare Quality (CPHQ); and has credentials in Occupational Therapy, Ergonomics, Lean, and Six Sigma Black Belt.

Community Health Assessment Process

The following sections represent the process of the Community Health Assessment completed with Marshall County Public Health and Marshall County Community Leadership and Key Stakeholders. These process steps include creating purpose, defining scope and community, engagement of key leadership, survey assessment, analysis, prioritization, reporting of outcomes, and action planning.

The IRS requirements for a CHA are a four-phase; the process was represented earlier in the document (see Methodology – Scope and Purpose), and further explored in the following sections.

Agreement/Contracting/Community Leadership (CHA Steps 1 – 3)

On January 23, 2023, leadership from Marshall County Public Health and Pavelka's Point Consulting, LLC met and discussed contracting arrangements, critical success factors, CHA process, timelines, and who would be key stakeholders. Shortly following this initial contracting meeting, these parties met on March 23 for planning for the HHS compliant CHA, further methodology, distribution, survey needs, agreement, and scope of services. Key leadership and stakeholders were also discussed, and a list of involvement was compiled in meeting minutes. It was elected at these meetings to move forward with the CHA process and initial survey distribution would happen at the following April 2023 and survey conclusion on or about October 2023.



Create the assessment, survey, and evaluation process (CHA Steps 4)

Starting in March 2023, a Community Health Assessment survey was designed and created. The leadership from Marshall County Public Health and Board of Health were allowed to review the survey as it was developed. New questions also address the actions or priorities from 2017 completed in the communities but Marshall County Public Health, along with the partnering community entities. Questions related to Social Determinants of Health were also added as recommended by best practice. More information can be provided on Social Determinates of Health at Healthy People 2030 <https://health.gov/healthypeople/priority-areas/social-determinants-health> or Health Leads (source of survey questions) at <https://healthleadsusa.org/> .

Collect the Data (CHA Steps 5)

Collection of survey data consisted of many forms and methods. Survey links, fliers, and paper copies were sent to local businesses and employers. Surveys were left at the Marshall County Public Health and partners for residents of the communities and either electronic or paper (hard) copies were allowed to be submitted. Leadership for the process also attended several community events, school events, and religious gatherings to encourage participation in the survey process. Electronic links were sent multiple times in the local newspapers, provided through the Hospital website, and patients were encouraged to complete the survey before or after healthcare services. During the process, the leadership provided translation services (i.e. vision or language), electronic and paper copies, and a brief description of purpose to those who were taking the survey. No material or monetary incentives were provided when taking the survey.

COMMUNITY PRESS RELEASE

The following was a press release that was sent to the local newspaper entities and distributed for general awareness of the survey being conducted.

County Health Needs


We want to hear from you!

Marshall County Public Health is conducting a survey for the health needs of the county during 2023.


We ask that you take a few minutes to complete the survey below. Your feedback will help to identify needs, services, and programs for the county through the Public Health Department.

Survey Link or Scan the QR Code:

English: <https://forms.gle/ZU5X2b7yUMsCFSxFA>



Spanish: <https://forms.gle/46pB2oKJ6VwDHFQ7A>



We want to hear from you!

Marshall County Public Health is conducting a survey for the health needs of the county during 2023.

Please take a few minutes to complete the survey using the QR code below.



Your feedback will help to identify needs, services, and programs for the county through the Public Health Department.



We want to hear from you!

Marshall County Public Health is conducting a survey for the health needs of the county during 2023.

Please take a few minutes to complete the survey using the QR code below.



Your feedback will help to identify needs, services, and programs for the county through the Public Health Department.



EMPLOYEE AND COMMUNITY COMMUNICATIONS

The prior was also used as a direct emailing campaign for the employees in and around the Marshall County Public Health and within the county. The organizations also posted the information in the local governmental mailings, Facebook ads, local newspaper ads, and Chamber of Commerce. This was also distributed in local grocery stores, places of worship, restaurants, community events, school events, and local gathering establishments.

Analyze the Data (CHA Steps 5 continued)

During and following the community survey process, data from external sources (secondary data) were being collected and analyzed. This included data from sources such as Robert Wood Johnson County Health Rankings, City Data, Iowa Health Fact Book, CDC, NHIS, Vital Statistics, etc. Survey data was considered primary data research and collected public health needs, perceptions, satisfaction with care and services for both public, private, and governmental agencies serving the Marshall County, Iowa area. This data can be found in the following charts in Data Details section with both the County Health Rankings(secondary), CHA Survey Data (detailed primary) and Town Hall meeting outcomes (primary).

Both the external, secondary data, and the initial analysis of the survey outcomes (primary data) were analyzed and presented in the May 2023 Town Hall meeting and the CHIP/ final data results were presented in the October 2023 Board of Health meeting. Top initial results were presented for the key stakeholders to continue to analyze, prioritize, and support realistic objectives for Marshall County Public Health for Marshall County, Iowa.

Town Hall Research Process (Engage & Prioritize with Stakeholders)

Document and Define Priorities (CHA Steps 6)

Community leadership should always be involved with the determination and prioritization of key actions within a community (service area). Members will not only buy-in to the mission of the actions at a higher support level, but they will also often provide key resources that are needed for such action, which are vital to the actions success and often cannot happen with only hospital supporting resources. Town halls are a focus group type setting where members can provide insight, consensus, and assist with prioritization of health issues. These sessions gathered input from key stakeholders, started priorities, and encouraged on-going dialog between entities.

Entities invited to the Town Hall meeting included local hospital, public health, mental health providers, service providers, employers, local residents, faith-based leadership, school leadership, business leaders, local government officials, and those that receive care (including persons with chronic conditions, un-insured, low-income, and minority groups).

Key community stakeholder groups were invited to the May 23, 2023, Town Hall meeting. The Town Hall meeting was held May 23, 2023, from 11:30 Am to 1:00 pm. At the Town Hall meeting, a short informational presentation was given, facilitation of priorities from the survey and health ranking information was completed, and key findings were determined out of one 90-minute meeting.

TOWN HALL GENERAL PUBLIC INVITE (LETTER)

Public notice sent to local newspapers, hospital websites, and local posting for attendance at the Town Hall meeting. All community members were invited to attend, and lunch was provided.



Public Health Letter
to Stakeholders Signe



Save the
date_Marshall County

Save the Date – We need your input!

We want to hear from you regarding the community's health needs.

Marshall County Public Health is conducting a Community Health Assessment for the health needs of the county during 2023.

Please save the date of May 23, 2023, at 11:30 am to 1:00 pm at the Marshalltown Public Library for the Community Leadership Meeting

Marshall County Public Health

101 E Main Street • Marshalltown, Iowa 50158
Phone: (641) 844-2799 • Cell: (641) 750-1929 • Fax: 641-844-2798
E-mail: pthompson@marshallcountya.gov • www.marshallcountya.gov

May 11, 2023

Hello! You are receiving this email invitation because you work closely with or have special knowledge of vulnerable populations, and we want to know about the health needs of our community.

Marshall County Public Health is conducting a Community Health Assessment survey this spring and summer, and we would like to invite you to take part in a Town Hall Meeting on:

Tuesday, May 23, 2023, from 11:30 am to 1:00 pm
Marshalltown Public Library, 105 W Boone St, Marshalltown, IA 50158

Information from this survey and meeting will be used by Marshall County Public Health to develop an implementation plan to improve the health of our community. The information gathered from the survey and town hall meeting will give us a snapshot of community health and what members of the community think are the areas of greatest need.

The meeting will include a brief presentation on the health needs identified in the 2023 survey, then attendees will be asked to work in small groups to generate ideas for specific projects that will address the needs found through the survey process. Sarah Pavelka, PhD, MHA, OTR/L, CPHQ, FNAHQ, of Pavelka's Point Consulting, LLC will facilitate the meeting and prepare the final report.

Your experiences and suggestions to improve health care delivery within our service area is very valued. We encourage your attendance in order to ensure representation from all segments of our service area and to meet the federal requirements.

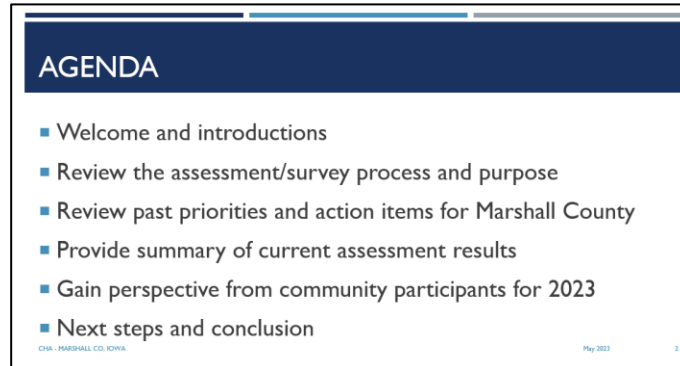
The focus group will begin at 11:30 am and refreshments will be available. Please RSVP by calling me at 641-844-2799 or emailing me at pthompson@marshallcountya.gov. Results of the assessment will be made available later this year. Thank you for helping us gain valuable insights into the health needs of our community.

Sincerely,

Pat Thompson, BSN, R.N.
Marshall County Public Health Director
Marshall County Public Health

TOWN HALL AGENDA

The following Agenda and Power Point were completed at the May 23, 2023, Town Hall meeting. At the end of the meeting, it was determined to have an initial list of community priorities from the analysis of primary and secondary research data. These initial priorities list will be further discussed with a steering committee of community leadership and represent community-based organizations which can address health concerns. This group, considering the priority and input from the Town Hall meeting will strategies and formulate final action plans for Marshall County Public Health and Marshall County, Iowa health needs.



TOWN HALL POWERPOINT PRESENTATION

The following PowerPoint presentation (please see image below for complete slide deck) was presented to key community stakeholder groups at the May 2023 Town Hall meeting.



Community Health
Assessment (CHA)_M:

Detailed Slides at end of this report

TOWN HALL ATTENDING KEY STAKEHOLDERS (ENGAGEMENT AND PRIORITIZATION)

The following is a list of community members (identified key stakeholders and interested community members) that were able to participate in the Town Hall meeting. In all there were 26 attendees at the May 23, 2023, meeting.

Marshall County CHA Town Hall Meeting – May 23, 2023		
Name	Organization	Email
Kelly Illum	Public Health	killum@marshallcounty.ia.gov
Becky Brown	Together We Can	twc50158@gmail.com
Jazmin Didy	RIVA	Jazmin@rivaiaowa.org
David Rierson	MFD	drierson@marshalltown-ia.gov
Esmeralda Monray	CAPS	esmeralda@capsonline.us
Stacey Tool-Crawford	MCSD	stoolcrawford@marshalltown.k12.ia.us
Taylor Wilson	SATUCI	twilson@satuci.com
Jacob Parks	SATUCI	jparks@satuci.com

Conny Schutte	Iowa River Hospice	cshutte@iowariverhospice.org
Ann Ersland	Iowa River Hospice	aersland@iowariverhospice.org
Kevin Huspbo	Marshall County VA	VA@marshallcountya.gov
Kim Elder	Marhsall County EMA	kelder@marshallcountya.gov
Ken Lyons	County Board & Health	klyons@mchsi.com
Sandy Bennett	community member	sb.slp@mchsi.com
Araceli Roberts	Mid Iowa Community Action	arareli.roberts@micaonline.org
Jana Larsen	Mid Iowa Community Action	jana.larsen@micaonline.org
Lexi Metz	Grace C Mae Advocate Center	lexi@advocatecenter.org
Kayla Danielson	McFarland Clinic	kdanielson@mcfarlandclinic.org
Leanne Carroll	BBBS	heartofiwowamentoring@gmail.com
Maria Gonzalez	BBBS	bbbsmaria.gonzalez@gmail.com
Emma Krapfl	American Lung Association	emmaline.krapfl@lung.org
Lt Abby Nicolai	Salvation Army	abby.nicolai@usc.salvationarmy.org
Lisa Soder	CICS	lisa.soder@cicsmhds.org
Sara Belles	Des Moines University student	sara.belles@dmu.edu
Sarah Pavelka	Pavelka’s Point Consulting, LLC	pavelkaspointconsulting@gmail.com
Pat Thompson	Marshall County Public Health	pthompson@marshallcountya.gov

Town Hall Outcomes

The following were the outcomes from the May 23, 2023, Town Hall meeting. These outcomes can be further explored in the Detailed Data/ Town Hall Meeting Outcomes. The outcomes were formulated from both primary data (survey) and secondary data (including County Health Rankings). The outcomes were compiled from large and small group round-robin brainstorming sections and then outlined into affinity groups. The following six (6) affinity groups were seen in the Town Hall meeting session.

Priorities
1. Mental Health: Increase the provided and breadth of services for Mental Health needs in the communities. Mental Health needs: increase providers, access, employment for providers, reimbursement shortage – barrier for services, community responses (example: EMT), and transportation to and from services in other communities.
2. Limited maternal and child health services: Community efforts to reach maternal and child health services to communities of underserved population. Strengthen access through pre-Natal and post Natal healthy Wellness opportunities for community members
3. Affordability of health services/ health insurance coverage: Minimize the impact of financial burden on health-related services including options for health education prevention chronic disease and community-based services
4. Housing for families (low-income options): options for all income level housing development in multiple communities across the county. Impacts have been delayed by natural and environmental

disasters over the last three years. Multiple households living below poverty line and unable to support healthy living communities due to access and income levels
5. Childcare services and access: childcare access continues to be a demanding situation with providers in the community either full or not enough available access. Also difficulty with sick childcare access and opportunities for working families at non-business hours
6. Education and assistance with health system navigation for underserved population/ cultures: due to cultural differences and diversity in communities many families are not receiving health services due to inability to navigate the system. Services for underserved populations to be able to navigate and access all available services in county

Community Strategy Formulation and Action Planning

Planning for Improvement Strategies (CHA Steps 7 & 8)

To complete the final steps of the process, Marshall County, Iowa (Marshall County Public Health and Marshall County Public Health) community leadership held meetings starting October 2, 2023. During this step of the Community Health Assessment, Marshall County, Iowa community leadership gathered all primary and secondary data, completed a relevance and achievable check, and determined 19 SMART goals (tactics) for their improvement of the community’s health. SMART goals are specific, measurable, achievable, relevant, and time-oriented action plans for improvements in the community.

This step also includes distribution of the CHA final report. Starting November 2023, Marshall County Public Health department will be able to be distributed to the community. This report will be sent electronically to all participating and interested community partners for Marshall County Public Health. The report will be provided, along with prior reports, on the Marshall County Public Health website. Paper copies will be distributed to interested parties as requested to Marshall County Public Health.

CHA Implementation Plan Tactics – Marshall County Public Health (MCPH)					
Starting 11/1/2023 to 12/31/2028					
CHA Health Areas of Need		"Specific Actions" to address community health needs.	Lead	Partners	Timeframe
1	Mental Health and Substance Use				
Provide depth and breadth of services for Mental Health and Substance use needs in the communities	a	Partnership with private agencies in community that provide services	CICS	Central Iowa Community Services, MCPH, Substance Abuse Treatment Unit for Central Iowa	Years 1-5
	b	Education support for county agencies			
	c	Improvement of community responses through referrals to services	MCPH		Years 3-5
	d	Participate in community coalition	CICS		Years 1-5
	e	Substance Use: referrals to services	SATUCI		Years 1-5
	f	Immigration services for health education	MCPH		Years 1-5
Progress and Update:					

2 Community Coalition include health support (Community Organization Active in Disaster (CoAID))					
Provide health resources and participate in community services	a	Create coalition and process to share Assistance services (ex. housing assessments)	Community Coalition	MCPH, United Way, Community Schools, Immigration services, childcare centers	Years 1-5
	b	Share information between community resources			
	c	Updates for community services (example childcare services)			
	d	Welcome center: Referral services and referral opportunities			Years 3-5
	e	Education support and public health services (example Immigration services)			Years 3-5
Progress and Update:					
3 Emergency Response services					
Participate in community response and services for emergencies	a	Assess current needs and outlook for emergency medical services	Marshall County Emergency Mgmt Response Services	Marshall County Emergency Management Response Services, MCPH, Unity Point Health - Marshalltown	Years 1-5
	b	Partnering with community agencies for emergency response planning			
	c	Services of environmental health and public health during emergency response (example mass casualty, sheltering, grant supported)			
Progress and Update:					
4 Preventative Services					
Coordination of community public health services for prevention and health improvement	a	Assessment/ Planning for chronic disease education and support	MCPH	CICS, MCPH, American Lung Association, Community Schools, HHS	Years 1-5
	b	Tean health and sexual health education	MCPH		
	c	Smoking prevention / cessation education and support	American Lung Assoc		
	d	Provide services for Immunizations – including coordination of supplies, vaccination for children (VFC) with community services	MCPH		
	e	Disease investigation and prevention services as applicable	MCPH		
Progress and Update:					

PRIOR ASSESSMENT ACTION PLANS

During the years 2017 to 2023, Marshall County Public Health and Community groups along with key community partners improved five (5) strategic tactics for the improvement of the community’s health. For details of the 2017 to 2023 Community Health Assessment tactical (action) planning, please see the details in the Details Data section of the report. Actions for improvements included but are not limited to chronic disease, mental health services, substance abuse crisis care, sexual health (STD), emergency preparedness, and access to care (through Public Health services).

There were improvements in two (2) of the five (5) areas. The three (3) other areas were slightly improved in their ratings. The improvements did not move the issues to “not a problem;” however, did move the issues to “Somewhat of a Problem” in a majority of the participants taking the survey and during Town Hall prioritization (CHA steps 5 and 6). The chart below was provided to the participants at the Town Hall meeting (May 2023) and signifies that Mental Health Services and Substance Use/Abuse still remain a concern for the survey participants.

IMPROVEMENTS – 2019			
(NOTE: % MAY NOT ADD UP TO 100%ALMOST ALL QUESTIONS WERE OPTIONAL)			
Priority Area	Not a Problem	Somewhat a Problem	Still a Problem
Chronic disease, mental health, substance abuse	8%	25%	58%
Crisis care, mental health	16%	25%	50%
Sexual health / STD	25%	16%	42%
Preparedness (ability to recover)	50%	16%	0%
Access to care (Public Health areas)	16%	58%	25%

CHA-MARSHALL CO, IOWA May 2023 12

Evaluation of Progress on Key Priorities and Strategic Alignment (CHA Step 9)

Marshall County Public Health and Marshall County Public Health departments will continually monitor the action plans for changes and adjustments as key findings present within three years. This assessment and findings will be incorporated into future strategic planning efforts and include a systematic cycle of improvement. Improvements will be completed using performance excellence tools, including but not limited to the Plan, Do, Study, Act improvement cycle and will include as many community partners, agencies, and interested individuals a possible for best outcomes and sustainability.

COMMUNITY (SERVICE AREA) HEALTH STATUS

Primary Research Findings

In spring through fall 2023, Marshall County Public Health sponsored/conducted primary research (survey) to all residents residing or receiving services in their primary service area, with 57 individual replies.

REPLIES BY ZIP

Marshall County CHA 2023 Sample by Zips			
#	Zips	County	Returns (% of Total)
1	Marshalltown - 50158	Marshall	46 (80.7%)
2	State Center – 50247	Marshall	3 (5.3%)
3	Melbourn – 50162	Marshall	2 (3.5%)
4	Haverhill – 50120	Marshall	1 (1.8%)
6	LeGrand – 50142	Marshall	1 (1.8%)
7	Lucas – 50151	Marshall	1 (1.8%)
8	Harvester – 50234	Marshall	1 (1.8%)
9	Conrad	Marshall	1 (1.8%)

OVERALL QUALITY OF SERVICES IN THE COMMUNITY (SERVICE AREA)

Community Healthcare Needs Assessment 2023		
In general, how would you rate the overall quality of the healthcare delivered to your community?	Marshall Co (2023) n = 57	Indication
Top 2 Boxes	27 (47.3%)	
Very Good	9 (15.7%)	
Good	18 (31.5%)	
Fair	20 (35%)	
Poor	7 (12.3%)	
Very Poor	3 (5.2%)	
Bottom 2 Boxes	10 (17.5%)	

RATING OF HEALTH SERVICES

Community Healthcare Needs Assessment 2023		
How would you rate the following health services?	Poor / Very Poor %	
	Marshall Co (2023) n = 57	Indication
Ambulance Service	5.2%	
Childcare	3.5%	
Chiropractor	5.2%	
Dentists	15.7%	
Eye Doctor / Optometrist	5.2%	
Family Planning Services	29.8%	
Home Health	14.0%	

Hospice	3.5%	
Hospital Inpatient Services	17.5%	
Mental Health Services	42.1%	
Nursing Home	17.5%	
Pharmacy	26.3%	
Primary Care Doctors (Family Practice)	12.2%	
Public Health Department	10.5%	
School Nurse	7.0%	
Specialist Physician care	43.8%	
Teen Health (drinking, abuse, safety, pregnancy)	28.0%	

CAUSES OF DISEASE OR DISABILITY IN THE COMMUNITY

Community Healthcare Needs Assessment 2023		
In your opinion, how much of a problem are the following causes of diseases or disability in your community?	Major Problem %	
	Marshall Co (2023) n= 57	Indication
Mental Disorders	73.6%	
Substance Abuse	71.9%	
Drug Abuse	70.1%	
Obesity	66%	
Diabetes	49.1%	
Heart Disease	40.3%	
Trauma	29.8%	
Cancer	26.3%	
Suicide	24.5%	
Sexually Transmitted Diseases	21.0%	
Respiratory Disease	19.2%	
Stroke	17.5%	
Pneumonia / Flu	10.5%	

HEALTH NEEDS BY AGE

Community Healthcare Needs Assessment 2023		
How well do you feel our local health care providers are doing in addressing the health needs of the following age groups?	Poor / Very Poor %	
	Marshall Co (2023) n=57	Indication

Infants	7.0%	
Age 1 - 12	3.5%	
Age 13 -17	8.7%	
Age 18 - 25	12.2%	
Age 26-44	8.7%	
Age 45 - 64	15.7%	
Age 65 - 84	14.0%	
Over 85	17.5%	

HEALTH SERVICES OUTSIDE OF THE COUNTY

Community Health Assessment 2023		
Over the past 2 years, did you or your household receive health care services outside of your county?	Marshall Co (2023) n = 57	Indication
Yes	89.5%	
No	10.5%	
<i>Totals</i>	100%	
Please list the health care services you or your household member(s) have received outside of your county: Number of replied	Marshall Co (2023) n= 57	Indication
Allergy	0	
Cancer/Oncology	2	
Cardiology/Heart Disease	4	
Chiropractic	1	
Dental	2	
Dermatology	2	
Diagnostic (MRI)	2	
Emergency Room	2	
ENT	2	
Eye / Surgery	2	
Gastrointestinal	3	
Mental Health	2	
Neurology	3	
OB	8	
Orthopedics Surgery	2	
Pain management	0	
Pediatric	3	

Podiatry	0	
Primary Care	5	
Pulmonary	2	
Rheumatology	3	
Sleep Apnea	1	
Specialty providers	6	
Surgery	5	
If offered, would you have received the services locally?	% of Replies	
Yes	62%	
Maybe	38%	
No	10%	

IMPROVEMENT OF SERVICES

Community Health Assessment 2023			
Are there health care services in your community or neighborhood that you feel need to be improved and or changed? (Please be specific)			
Rank	Services	# Replies	% of Replies
1	Mental Health Services	4	7.0%
2	Access to services	3	5.2%
2	Services for aging (Long-term care)	3	5.2%
4	Primary Care	2	3.5%
4	OB-GYN/Women's Health	2	3.5%
6	Oncology	1	1.75%
6	Wellness options	1	1.75%
6	Emergency services (ER)	1	1.75%
6	Diabetic services	1	1.75%
6	Home Health	1	1.75%

THREE YEAR ACTION PLAN IMPROVEMENTS

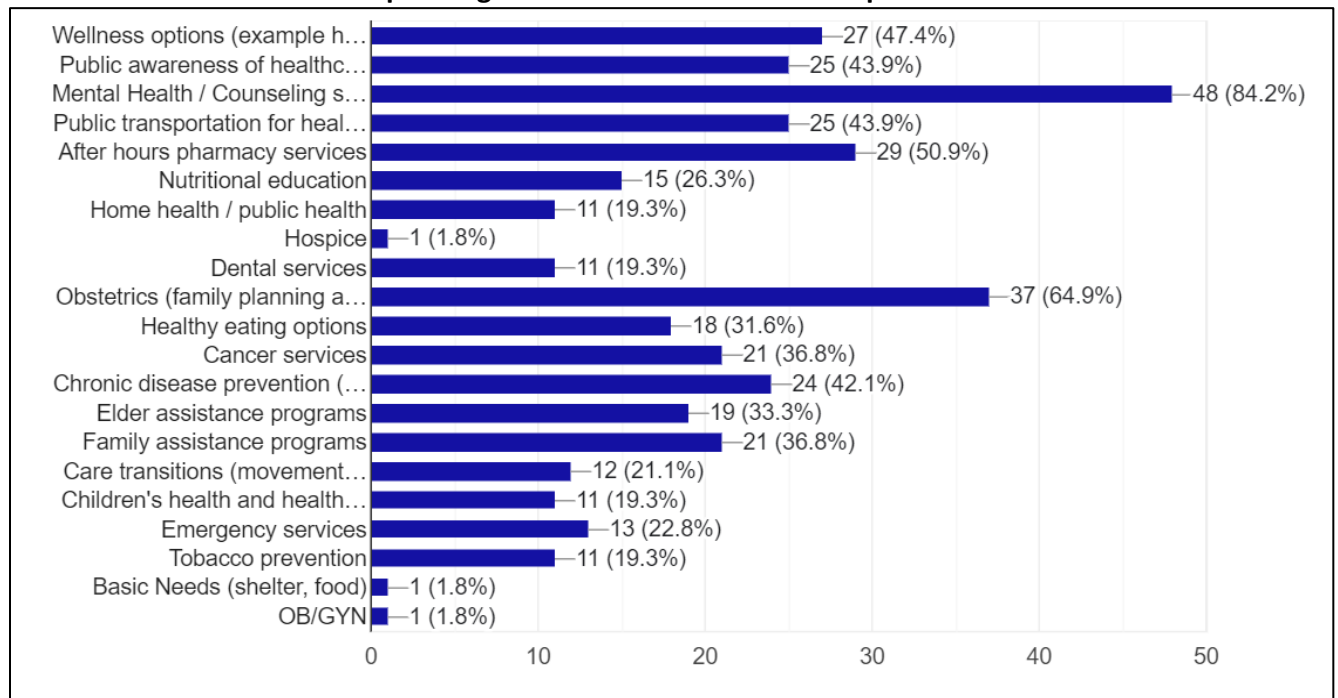
Community Health Assessments 2023			
Please rate the following areas for your community.	Not a Problem	Somewhat of a Problem	Still a Problem
Chronic disease, mental health, substance abuse	8%	25%	58%
Crisis care, mental health	16%	25%	50%
Sexual health / STD	25%	16%	42%

Preparedness (ability to recover)	50%	16%	0%
Access to care (Public Health areas)	16%	58%	25%

PRESSING ISSUES FOR TODAY'S IMPROVEMENTS

Community Health Assessment 2023			
Which health needs are most pressing TODAY and are in need of improvement?			
Rank	Health Needs	# Replies	% of Total Replies
1	Mental Health/Counseling	48	82%
2	Obstetrics / Family Planning	37	64.9%
3	After hours Pharmacy services	29	50.9%
4	Wellness options	27	47.7%
5	Public Awareness of services	25	43.9%
6	Public Transportation	25	43.9%
7	Chronic Disease	24	42.1%
8	Cancer services	21	36.8%
9	Family Assistance Programs	21	36.8%
10	Elder Assistance Programs	19	33.3%
11	Healthy Eating options	18	31.6%
(Must consider that the same people who voted for multiple categories)			

Which health needs are most pressing TODAY and are in need of improvement?



RATING OF SERVICES FOR COMMUNITY – PUBLIC HEALTH AND OTHER

Community Health Assessment 2023								
How would you rate each of the following in your community? (*Public Health & Other)	Very Poor	Poor	Fair	Good	Very Good	Not Aware/ Not Applicable	Very Poor + Poor	Good + Very Good
Access to services*	3	12	20	13	4	3	15 (26%)	17 (29%)
Alcohol use and treatment programs	4	6	17	17	1	9	10 (18%)	18 (32%)
Caregiver training programs	1	4	12	7	0	31	5 (9%)	7 (12%)
Disease Investigation*	4	5	14	5	7	19	9 (16%)	12 (21%)
Drug abuse programs	3	7	19	14	1	11	10 (18%)	15 (26%)
Early childhood development programs	1	2	15	20	4	13	3 (5%)	24 (42%)
Emergency preparedness*	3	1	13	22	12	4	4 (7%)	34 (60%)
Early Childhood (development) programs	1	2	15	20	4	13	3 (5%)	24 (42%)
Health screenings*	3	4	23	15	2	6	7 (12%)	17 (21%)
Immunizations – Children’s Program*	1	2	9	23	18	2	3 (5%)	41 (72%)
Immunizations – Flu Vaccine Clinics*	1	2	10	23	16	2	3 (5%)	39 (68%)
Obesity prevention and treatment	5	7	17	3	0	23	12 (21%)	3 (5%)
Prevention of falls	1	8	11	6	1	28	9 (16%)	7 (12%)
Reduction of opiate/narcotic use	3	11	14	11	1	15	14 (25%)	12 (21%)
Spiritual health support	2	4	11	18	3	17	6 (11%)	21 (37%)
Tobacco prevention / cessation programs*	6	5	19	11	0	12	11 (19%)	11 (19%)
Transportation (bus) services	3	4	20	18	4	5	7 (12%)	22 (39%)
Tuberculosis (TB) Control and testing*	3	4	12	6	6	23	7 (12%)	12 (21%)
Violence prevention	6	8	19	7	0	15	14 (25%)	7 (12%)

Personal Health Needs: Survey Results

PERSONAL HEALTH NEEDS: HEALTH DESCRIPTION

Community Healthcare Needs Assessment 2023		
In general, how would you best describe your health? (Choose one)	Marshall Co (2023) n= 57	Trend
Top 2 Boxes	47 (82.4%)	
Very Good	12	
Good	35	
Fair	9	
Poor	1	
Very Poor	0	
Bottom 2 Boxes	1 (1.9%)	

PERSONAL HEALTH NEEDS: SOCIAL DETERMINANTS OF HEALTH

Community Health Assessment 2023			
Social Determinants of Health – questions for need:	No %	Yes %	Total %
In the last 12 months, did you ever eat less than you felt you should because there wasn't enough money for food?	99.7%	0.3%	100.0%
In the last 12 months, has your utility company shut off your service for not paying your bills?	99.7%	0.3%	100.0%
Are you worried that in the next 2 months, you may not have housing?	99.7%	0.3%	100.0%
Do problems getting childcare make it difficult for you to work or study? (leave blank if you do not have children)	78.5%	21.5%	100.0%
In the last 12 months, have you needed to see a doctor, but could not because of cost?	99.7%	0.3%	100.0%
In the last 12 months, have you ever had to go without health care because you didn't have a way to get there?	99.7%	0.3%	100.0%
Do you ever need help reading hospital materials?	99.7%	0.3%	100.0%
Are you afraid you might be hurt in your apartment building or house?	99.7%	0.3%	100.0%
Have you ever missed work or lost a job due to unreliable transportation?	99.7%	0.3%	100.0%

PERSONAL HEALTH NEEDS: OVERALL HEALTH – 2 YEAR COMPARISON

Community Healthcare Needs Assessment 2023		
Compared to a year ago, how would you rate your overall health in general now?	Marshall County (2023) n= 57	Indicator
Much better than a year ago	7 (12.2%)	
About the same	47 (82.5%)	
Much Worse than a year ago	3 (5.2%)	

PERSONAL HEALTH NEEDS: HEALTH PRACTICES

Community Healthcare Needs Assessment 2023		
Do you follow these health practices?	Marshall County (2023) n= 57	Indicator
If over 50, have you had a colonoscopy?	Yes = 37 No = 4	
If male over 50, do you have annual prostate exams?	Yes = 8 No = 4	
If female over 40, do you have annual mammograms?	Yes = 29 No = 3	
If female, do you have a pap smear every other year?	Yes = 30 No = 8	
Do you get 2.5 hours a week of moderately intense physical activity?	Yes = 37 No = 20	

PERSONAL HEALTH NEEDS: HEALTH PRACTICES

Community Health Assessment 2023			
Please complete sentence below - "Are you..."	No %	N/A %	Yes %
Eating right (Daily, 5 servings of fruits, vegetables, wheat)	18	0	39
Using tobacco products weekly	47	5	5
Exercising 2-3 times weekly	24	0	33
Consuming alcohol (more than 1 drink daily)	50	0	7
Receiving an annual flu shot	9	2	46
Been without a place to stay for multiple nights (homeless)	51	6	0
Have difficulty with employment due to transportation, education, skills, childcare, scheduling, etc.)	46	10	1
Vaccinated against COVID-19	5	2	50

Primary Data (Survey) Demographics of Participants 2023

AGE

What is your age?	# of Replies	% of Total
17 and under	0	0%
18 to 25	1	1.8%
26 to 44	13	22.8%
44 to 64	26	45.6%
65 to 84	17	29.8%
85 and over	0	0%
Total	57	100.0%

GENDER

What is your gender?	# of Replies	% of Total
Female	42	73.7%
Male	15	26.3%
Prefer not to say	0	0%
(blank)	0	0%
Total	57	100%

IDENTITY

How would you identify yourself?	# of Replies	% of Total
Indian/ Native Alaskan	0	0%
Multicultural/ Multiracial	0	0%
Asian / Pacific Islander	0	0%
Caucasian / White	56	98.7%
Latino / Hispanic	0	0%
African American	1	1.8%
Total	57	100%

HOUSEHOLD

How would you describe your household? (Please select all that apply)	# of Replies	% of Total
Married	41	71.9%
Parent/Guardian with children at home	10	17.5%
Multiple adults with children no longer at home	1	1.8%
Single	8	14%
Divorced	1	3.5%
Widowed	4	7.0%

HEALTH CARE FACILITY

What type of healthcare facility do you use when not feeling well or sick?	# of Replies	% of Total
--	--------------	------------

Clinic/Doctor's office	45	78.9%
Urgent care/Acute Care	10	17.5%
Don't seek care/medical treatment	2	3.5%
Emergency Department	0	0%
Telehealth / virtual visits	0	0%

MEDICAL INFORMATION

Where do you get most of your medical information?	# of Replies	% of Total
Doctor	37	66.1%
Internet	17	30.4%
Family	1	1.8%
Social Media/Television/ Radio	0	0%
Insurance Company	1	1.8%
Friend(s)	0	0%

INSURANCE

What type of health insurance coverage is your primary plan?	# of Replies	% of Total
Partially covered by employer (you and employer share cost)	25	45.6%
Covered by employer (employer pays total cost)	11	19.3%
Private Insurance you purchased	3	19.3%
Medicare	15	26.3%
Medicaid	2	3.5%
No coverage (uninsured)	0	0%

INVOLVEMENT IN COMMUNITY

For reporting purposes, are you involved in or are you a... (Please check all that apply)	# of Replies	% of Total
Hospital or Clinic employee	3	5.8%
Consumer of healthcare services	25	48.1%
Parent / Caregiver	18	34.6%
Healthcare Provider	6	11.5%
Education official / Teacher	8	15.4%
Civic club member	10	19.2%
Farmer / Rancher	3	5.8%
Laborer	1	1.9%
Business / Merchant	9	17.3%
Board member (local health organization)	6	11.5%
Retired	2	3.8%
Health Department	5	9.6%
Clergy / Congregational Leader	2	3.8%
Veteran	2	3.8%

College / University student	1	1.9%
Law enforcement	0	0%
Economic Development/Government	2	3.8%
Self-employed	0	0%
Construction / Housing / Builder	1	1.9%
Student (high school)	0	0%
Insurance industry	0	0%
Non-profit organization	2	3.8%
Fire services	1	1.9%

Secondary Research Findings 2023

OVERALL STATE HEALTH RANKINGS

#	IA Rank of 99 Counties	Definitions	Marshall Co (2023)	Iowa	Trend
1	Physical Environment (51st - 74th)	Severe Housing Cost Burden	9%	10%	
2	Health Factors (91st)	Adult Smoking Food Environment Index Sexually Transmitted Infections	17% 8.1 515.6	17% 8.6 478.5	
3	Clinical Care (51st - 74th)	Uninsured Mammography Screening Flu Vaccinations	9% 49% 56%	6% 47% 57%	
4	Social & Economic Factors (75th-99th)	Children in Poverty Injury Deaths	14% 74	12% 70	
5	Health Outcomes (84th)	Poor or Fair Health	13%	12%	
6	Health Behaviors (75th-99th)	Adult Obesity Physical Inactivity Alcohol-impaired Driving Death Teen Births	38% 30% 43% 31	37% 23% 27% 16	
7	Quality of life (82nd)	Poor Physical Health Days Poor Mental Health Days	3.1 4.5	2.8 4.4	
8	Length of life (77th)	Life Expectancy	76.7	78.7	
http://www.countyhealthrankings.org, released 2023					

DEMOGRAPHIC DETAILS: POPULATION AGE, GENDER, ETHIC AFFILIATION (1A)

	Population Indicator	Marshall Co (2023)	State of Iowa	Trend
1a	Population, Estimate (2021)	39,853	3,197,689	
1a	Population, Census 2020	40,105	3,190,369	
1a	Persons Under 5 years, Percent	6.3%	5.9%	
1a	Persons Under 18 years, Percent	25.4%	23.1%	

1a	Persons 65 Years and Over, Percent	18.1%	17.7%	
1a	Female Persons, Percent	49.0%	49.8%	
1a	White Alone, Percent	90.5%	90.1%	
1a	Black or African American Alone, Percent	2.5%	4.3%	
1a	Hispanic or Latino, Percent	24.9%	6.0%	
1a	Foreign Born Persons, Percent	13.2%	5.5%	
1a	Language Other than English Spoken at Home, Percent, Age 5+	22.9%	8.6%	

Source: US Census – Quick Facts

<https://www.census.gov/quickfacts/fact/table/marshallcountyiowa,IA/PST045222>

DEMOGRAPHIC DETAILS: POPULATION STATUS (1B)

	Population Indicator	Marshall Co (2023)	State of Iowa	Trend
1b	Veterans	2,770	174,514	
1b	Living in Same House 1 Year & Over, Percent	88.0%	86.0%	
1b	Persons per Square Mile	70.1	57.1	
1b	Children in Single-Parent Households, percent (County Health Rankings)	20%	21%	
1b	Poverty Levels, (Iowa Health Fact Book)	11.6%	12.7%	
1b	Limited Access to Healthy Foods, 2019 (County Health Rankings)	10%	6%	
1b	People 65+ with Low Access to a Grocery Store, (US Dept of Agriculture- Food Atlas)	1.25% (2019)	3.6%	
1b	Voter Turnout, percent (Iowa Secretary of State)	50.68% (2022)	55.06%	

Source: Unless stated source: US Census – Quick Facts

<https://www.census.gov/quickfacts/fact/table/marshallcountyiowa,IA/PST045222>

ECONOMIC DETAILS (2)

	Economic Indicator	Marshall Co (2023)	State of Iowa	Trend
2	Per Capita Money Income in Past 12 Months (2021 dollars)	\$29,432	\$34,817	
2	Persons per Household	2.54	2.42	
2	Severe Housing Problems (County Health Rankings)	10%	12%	
2	Retail Sales per Capita (Business Quick Facts)	\$18,895	\$14,607	
2	Total Number of Firms	670	61,849	
2	Unemployment (County Health Rankings)	7.1%	5.3%	
2	Overall Food Insecurity Rate, 2020 (Feeding America)	8.5%	7.3%	
2	Child Food Insecurity Rate, 2020 (Feeding America)	14.4%	11.0%	
2	Grocery stores / 1,000 pop	0.27	0.3	

	(US Department of Agriculture- Food Atlas)	(2014)		
2	Low-Income and Low Access to a Grocery Store, (US Department of Agriculture – Food Atlas)	3.77% (2019)	3.6%	
2	Mean Travel Time to Work (Minutes), Workers Age 16+	18.9	19.6	
2	Long Commute - Driving Alone (County Health Rankings)	16%	21%	

Source: Unless stated source: US Census – Quick Facts

<https://www.census.gov/quickfacts/fact/table/marshallcountyiowa,IA/PST045222>

PUBLIC SCHOOLS HEALTH DELIVERY (3A AND 3B)

Currently school districts are providing on-site primary health screenings and basic care.

	Education Indicator	Marshall Co (2023)	State of Iowa	Trend
3a	Students Eligible for Free Lunch (%)	61%	41%	
3a	4-Year High School Graduation Rates (Quick Facts)	85.3%	92.8%	
3a	Bachelor's Degree or Higher, Percent of Persons Age 25+, (Quick Facts)	20.7%	29.7%	

<https://www.marshalltown.k12.ia.us/>

Vaccination Rates (2-year-old)

Public Health

Iowa HHS

Select County ▼
 Marshall ▼

Select Year ▼
 2022 ▼

2 Year old Immunizations - Marshall County - 2022

Child immunization data includes the percent of children that received the recommended doses of 4 DTaP, 3 Polio, 1 MMR, 3 Hib, 3 Hepatitis B, 1 Varicella and 4 PCV vaccines by age 24 months. These data can be used to identify trends and patterns in immunization coverage over time and in different geographic areas. Vaccines are the best way to protect children and communities from vaccine-preventable diseases.

The Immunization Program uses data from the Immunization Registry Information System (IRIS) to calculate county and state immunization rates for 2-year-old children. The data includes patients served by both public and private health care providers with a record in IRIS that have a zip code and are an "active" patient within a health care provider organization. These data provide immunization rates based upon a standard vaccination series identified by the Advisory Committee on Immunization Practices (ACIP) and the Centers for Disease Control and Prevention (CDC). The Advisory Committee on Immunization Practices (ACIP) develops written recommendations for the routine administration of vaccines, along with schedules regarding the appropriate timing, dosage, and contraindications.

The recommended vaccines for 2 year olds can be found here:
<https://hhs.iowa.gov/immmb/immunization/schedule>

2 Year old Immunization Rates by Vaccine Series

	County	State
4-3-1-3-3-1-4	71.5%	70.9%
4 DTaP	81.2%	76.3%
3 Polio	92.0%	87.3%
1 MMR	85.5%	84.8%
3 Hib	91.4%	83.7%
3 Hep B	93.7%	87.9%
1 Varicella	89.9%	84.1%
4 PCV	79.7%	77.1%

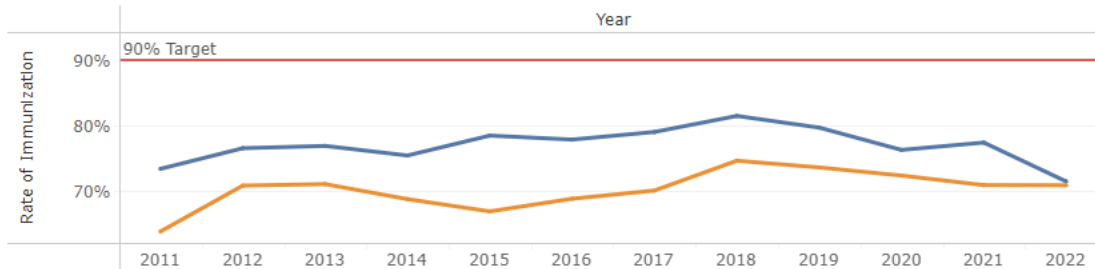
Coverage rates calculated with IRIS denominator.

2 Year old Population Estimates for Marshall County

Records in IRIS	537
-----------------	-----

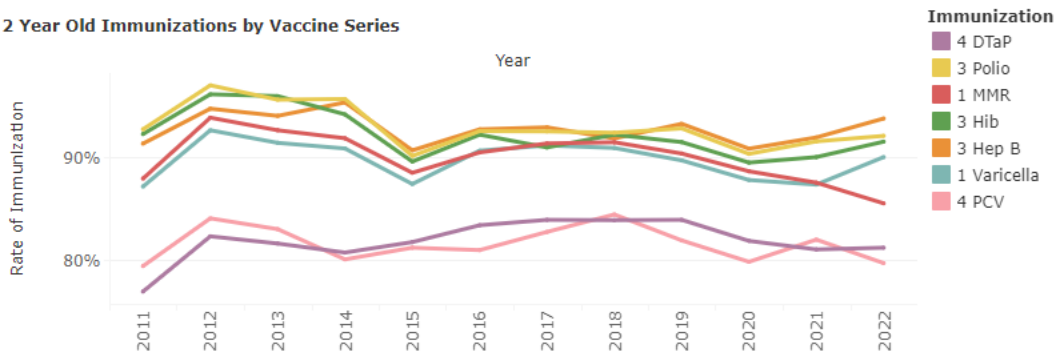
2 Year Old Immunizations for All Recommended Vaccines Series Complete (4-3-1-3-3-1-4)

Blue Line: Marshall County
 Orange Line: State of Iowa



Note: 90% target based on Iowa's LPHA immunization services contract target.

2 Year Old Immunizations by Vaccine Series



Date Generated: October 26, 2023
 Data Source: IRIS, Iowa Department of Health and Human Services
 Data can be accessed at: <https://tracking.idph.iowa.gov/Health/Immunization>

[Download PDF](#)

MATERNAL AND INFANT HEALTH (4A AND 4B)

Tracking maternal and infant care patterns is vital in understanding the foundation of family health.

	Health Indicator	Marshall Co (2023)	State of Iowa	Trend
4a	Mothers Who Began Prenatal Care in First Trimester (Iowa Health Fact Book)	744	Rank 16	
4a	Annual Birth Outcome % Preterm (March of Dimes)	13.5%	10.0%	
4a	Low Birth Weight (<2500 Grams) (Iowa Health Fact Book)	64	Rank 17	
4a	Mothers Who Smoked During Pregnancy (Iowa Health Fact Book)	89	Rank 19	
4a	Mothers under Age 20 (Iowa Health Fact Book)	56	Rank 11	
4a	Out-of-Wedlock Births (Iowa Health Fact Book)	408	Rank 14	
4a	Average Monthly WIC Participation (2020) (https://datacenter.kidscount.org)	43.7%	25.2%	

LIVE BIRTHS (4B)

	Vital Statistics	Marshall County, Iowa	State of Iowa	Trend
4	Total Live Births, 2010	557	38,514	
4	Total Live Births, 2011	538	38,204	
4	Total Live Births, 2012	583	38,686	
4	Total Live Births, 2013	548	39,013	
4	Total Live Births, 2014	540	39,685	
4	Total Live Births, 2015	494	39,467	
4	Total Live Births, 2016	536	39,223	
4	Total Live Births, 2017	505	38,408	
4	Total Live Births, 2018	533	37,709	
4	Total Live Births, 2019	479	37,597	
4	Total Live Births, 2020	492	36,058	

Source: Iowa Department of Public Health, Vital Statistics

HOSPITAL SPECIFIC DETAILS (5)

Understanding provider access and disease patterns are fundamental in healthcare delivery.

	Health Indicator	Marshall Co (2023)	State of Iowa	Trend
5	Primary Care Physicians per 1 (County Health Rankings)	2,190:1	1,310:1	Red
5	Preventable Hospital Stays (County Health Rankings)	1,562	2,809	Green

BEHAVIORAL AND MENTAL HEALTH PROFILE (6)

	Health Indicator	Marshall Co (2023)	State of Iowa	Trend
6	Depression: Medicare Population (Center for Medicare and Medicaid Services)	17%	13.8%	Red
6	Alcohol-Impaired Driving Deaths, (3 of 6 Total Driving Deaths) (County Health Rankings)	43%	27%	Red
6	Poor Mental Health Days (County Health Rankings)	4.5	4.4	Red

HEALTH BEHAVIORS PROFILE (7)

Knowing community health risk factors and disease patterns can aid in the understanding next steps to improve health.

	Health Indicator	Marshall Co (2023)	State of Iowa (2023)	Trend
7	Adult Obesity	42%	34%	Red
7	Adult Smoking	18%	17%	Yellow
7	Excessive Drinking	21%	25%	Green
7	Physical Inactivity	31%	26%	Red
7	Poor Physical Health Days	3.5	3.1	Yellow
7	Sexually Transmitted Infections (per 100,000 residents)	447.1	508.5	Green

Source: County Health Ranking (7)

MORTALITY PROFILES

The leading causes of county deaths are listed below.

	Health Indicator	Marshall Co (2023)	State of Iowa (2023)	Trend
8	Life Expectancy Females (Kaiser Family Foundation, www.kff.org)	80.98	80.1	
8	Life Expectancy Males (Kaiser Family Foundation, www.kff.org)	73.65	74.9	
8	Infant Deaths (Iowa Health Fact Book)	6.2/1000	3.99/1000	
8	Child mortality (County Health Rankings)	50	60	
8	Pre-mature Age-Adjust Mortality (County Health Rankings)	420	340	

CAUSE OF DEATH -5 YEAR TOTALS

#	Causes of Death by County of Residence (numbers for 2016 to 2020)	Marshall Co (5 year totals)	State of Iowa Rank	Indicator
	All Causes	2,488	13	
1	Heart Disease	647	11	
2	All Cancer	418	20	
3	Chronic Obstructive Pulmonary Disease	181	8	
4	Stroke	118	13	
5	Accidents and Adverse Effects	116	15	
6	Lung Cancer	99	20	
7	Alzheimer's Disease	86	21	
8	Diabetes Mellitus	79	12	
9	Falls	54	11	
10	Pneumonia/Influenza	45	12	
11	All Transportation	37	9	
12	Motor Vehicle Traffic	34	8	
13	Suicide	30	21	
14	Firearms	17	22	

Source: Iowa Health Fact Book

PREVENTATIVE HEALTH (COUNTY HEALTH RANKINGS)

	Health Indicator	Marshall Co (2023)	State of Iowa	Trend
9	Access to Exercise Opportunities	81%	79%	
9	2-Year-Old Coverage of Individual Vaccines and Selected Vaccination Series, (Iowa Immunization Program)	76%	71.0%	
9	Diabetes Prevalence	10%	9%	
9	Mammography Screening	49%	47%	
9	Limited Access to Healthy Food	10%	6%	

UNINSURED PROFILES (SOURCE: IOWA HEALTH FACT BOOK)

	Health Indicator	Marshall Co (2023)	State of Iowa Rank	Trend
10a	Uninsured (Under 65), 2020	8.8%	4%	

Inventory of Community (Service Area) Health Partners

Other providers can be found at <https://www.unitypoint.org/find-a-doctor>.

Family Medicine

Mc Farland Clinic – Marshalltown

421 East Merle Hibbs Boulevard
Marshalltown, IA 50158
641-752-5469

Daniel Delaney, DO
Lynne DeSotel, MD
Laura Lasack, MD
Maria Olberding, MD
Joseph Pollpeter, MD
Carol Barlow, ARNP
Alexandria Bonner, PA-C
Meleah Jensen, PA-C
Stefanie Jimenez, ARNP
Megan Ruopp, ARNP
Heather Stevenson, ARNP
Jackie Wilson, ARNP

Abbie Sharp, ARNP
India Warren, PA-C
Jaime Hooley, PA-C

UnityPoint Clinic - Express (Marshalltown)

1704 South Center Street, Marshalltown, IA 50158; 641-854-8550
Becca Driscoll, PA
Melissa Pearson, ARNP
Angela Dudley, DNP, ARNP

Mc Farland Clinic – Express Care

802 South Center Street, Marshalltown, IA 50158; 641-844-5200
Shannon Appel, ARNP
CJ Graves, ARNP
Ann Jones, PA-C
Karissa Junior, ARNP
Leanne Knoop, PA-C

Primary Health Care – Marshalltown

101 Iowa Avenue W, #102
Marshalltown, IA 50158
641-753-4021

Cindy Cruikshank, ARNP (Wm’s Hlth)
Korie Eisheid, ARNP (FP)
Lauren Mancieri, ARNP (FP)

UnityPoint Health - Marshalltown Hospital

55 UnityPoint Way, Marshalltown, IA 50158
641-754-5151

Nicole Ransom, ARNP
Kristina Beck, ARNP

Emergency Department

UnityPoint Health - Marshalltown Hospital
55 UnityPoint Way, Marshalltown, IA 50158
641-754-5151

Sarah A. Hemming-Meyer, DO
Jake Flinkman, DO
Lance VanGundy, MD
Joseph Toulouse, MD
Blaine Westemeyer, MD
Mariah Fritz, PA
McKenzie Cooper, PA
Leslie Brown, PA-C

UnityPoint Health Family Medicine - Marshalltown

303 Nicholas Drive, Marshalltown, IA 50158
641-753-2752

Thai Nguyen, MD
Sherri Stebniski, PA-C

General Surgery

Mc Farland Clinic – Marshalltown

421 East Merle Hibbs Boulevard
Marshalltown, IA 50158

641-752-5469

Stephen Van Buren, FACS, MD
Alison Wilson, MD

Allergy

Mc Farland Clinic – Marshalltown

421 East Merle Hibbs Boulevard
Marshalltown, IA 50158
641-752-5469
Tiffany Navrkal, ARNP

Audiology

Wolfe Audiology

309 E. Church St, Marshalltown, IA 50158
866-642-8142

Cardiology

UnityPoint Health - Marshalltown Multi-Specialty

51 UnityPoint Way, Marshalltown, IA 50158
641-844-6259
Eduardo S. Antezano, MD
Craig A Stark, MD

Mc Farland Clinic – Marshalltown

421 East Merle Hibbs Boulevard
Marshalltown, IA 50158
641-752-5469
Jason Rasmussen, MD

Chiropractic

Dunham-Fritz Chiropractic

2501 S Center St Ste E, Marshalltown, IA
50158
641-752-3112
Brian Fritz D.C.
Ian Slagle D.C.

Bantz Chiropractic Center

105 Westwood Dr, Marshalltown, IA 50158
641-752-1010
Eric Bantz D.C.

Lindquist Family Chiropractic & Acupuncture

16 E Southridge Rd, Marshalltown, IA 50158
641-752-2291

Back & Neck Care

107 E Southridge Rd Suite B, Marshalltown, IA
50158
641-753-5796
James Carmicheal, Jr. D.C.

Dr. Joel Beane Chiropractor

901 Iowa Ave W, Marshalltown, IA 50158
641-752-3113

Dentists

Marshalltown Family Dentistry

101 W Southridge Rd, Marshalltown, IA
50158
641-752-4138
Daniel C. Johnson, DDS
Michelle M. Johnson, DDS

Kimball & Beecher Family Dentistry

105 W Merle Hibbs Blvd, Marshalltown, IA
50158
641-753-3383
Ashley Stoll-Pfrimmer, DDS
Colton Maharry, DDS
Jameson Hook, DDS

Aspen Dental

2615 S Center St, Marshalltown, IA 50158
641-352-7180
Shachindra Bahadur, DDS
Tong Wang, DDS

Primary Health Care - Marshalltown Dental

101 Iowa Ave W Suite 102, Marshalltown, IA
50158
641-753-4021
Brian Ancell, DDS
Thomas Moriarty, DDS
Jacob Parsons, DDS

Main Street Dental

201 Main Street, Marshalltown, IA 50158
641-753-7000
Kent Downing, DMD

Drs. Downey & Gantz, General Dentistry
201 Nicholas Dr, Marshalltown, IA 50158
641-752-2752

Clark Dentistry
101 Southridge Rd, Marshalltown, IA 50158
641-752-3651
David J Clark, DDS

Dermatology

UnityPoint Health - Marshalltown Multi-Specialty
51 UnityPoint Way, Marshalltown, IA 50158
641-844-6259
Chad Stocker, DO

ENT

McFarland Clinic
421 E. Merle Hibbs Blvd,
Marshalltown, IA, 50158
641-752-0654
Noelle Bennett, PA-C

Home Care Agencies

Iowa Home Care
104 W Southridge Rd, Marshalltown, IA
50158
641-752-5545

Comfort Keepers of Marshalltown, IA
19 S Center St #2, Marshalltown, IA 50158
641-752-0715

Home Instead Senior Care
16 E Main St, Marshalltown, IA 50158
641-752-4202

Hospitalist

UnityPoint Health - Marshalltown Hospital
55 UnityPoint Way, Marshalltown, IA 50158
641-754-5151
Julio Chirinos, MD
Russell Adams, MD
Pradeep Ramesh, MD
Faheemuddin Ahmed, MD
Karrie Lisboa, ARNP

Sarah Bischoff, ARNP
Nicole Ransom, ARNP
Jessica Webb, ARNP
Jaren Quigle, ARNP
Dawn Higgins, NP
Michelle Richmond, ARNP
Brandy Reints, ARNP
Kristina Beck, ARNP

Internal Medicine

UnityPoint Health - Marshalltown Multi-Specialty
51 UnityPoint Way, Marshalltown, IA 50158
641-844-6259
Chad Stocker, DO

Psychiatry

Center Associates
3809 S Center St, Marshalltown, IA 50158
641-752-1585
Douglas Steenblock, MD
Emily Clawson, ARNP
Megan Eichmeier, ARNP
Christina Gonzalez, ARNP
Erin Hatcher, ARNP
Lisa Rock, ARNP

Primary Health Care – Marshalltown
101 Iowa Avenue W, #102
Marshalltown, IA 50158
641-753-4021
Bethanie Langloss, LISW

Nursing Home/Assisted Living

Almost Home Inc
2102 S 5th Ave, Marshalltown, IA 50158
641-753-4855

Accura HealthCare of Marshalltown
2401 S 2nd St, Marshalltown, IA 50158
641-752-1553

Grandview Heights Rehab and Healthcare
910 E Olive St, Marshalltown, IA 50158

641-752-4581

Southridge Specialty Care

309 W Merle Hibbs Blvd, Marshalltown, IA 50158

641- 752-4553

Glenwood Place

2907 S 6th St, Marshalltown, IA 50158

641-752-8410

The Willows of Marshalltown

2315 Campbell Dr, Marshalltown, IA 50158

641-758-3123

Bickford of Marshalltown

101 Newcastle Rd, Marshalltown, IA 50158

641-753-5700

OB/Gynecology

McFarland Clinic

421 E. Merle Hibbs Blvd,
Marshalltown, IA, 50158

641-752-0654

Bonnie Beer, MD
Beth Soulli, DO
Rachel Hayward, CNM, ARNP
Crystal Iddings, CNM, DNP
Alice May, CNM, ARNP
Mattea Otten, CNM, ARNP
Aubree Remsburg, CNM, ARNP

Primary Health Care – Marshalltown

101 Iowa Avenue W, #102
Marshalltown, IA 50158

641-753-4021

Cindy Cruikshank, ARNP (women)

Oncology

McFarland Clinic

421 E. Merle Hibbs Blvd,
Marshalltown, IA, 50158

641-752-0654

Austin Greco, MD
Joseph Merchant, MD
Sonam Patel, MD

Ophthalmology/Optometrist

C Eye Care

236 N 13th St., Marshalltown, IA 50518

641-352-3544

Cynthia Ragland, OD

Wolfe Eye Clinic Marshalltown

309 East Church Street, Marshalltown, IA

50158

641-754-6200

Matthew Rauen, MD

Peter Rhee, MD

James Davison, MD

Eyecare Associates

501 E Main St, Marshalltown, IA 50158

641-752-1511

Abie R. Chadderdon, OD

Connie J. Feldman, OD

Collin Edwards, OD

Kacie Monroe, OD

McFarland Clinic

421 E. Merle Hibbs Blvd,
Marshalltown, IA, 50158

641-752-0654

Nicolas Hamouche, MD

(Ophthalmology)

Mallory Scrimger, OD (Optometry)

Orthopedics

McFarland Clinic

421 E. Merle Hibbs Blvd,
Marshalltown, IA, 50158

641-752-0654

James Friederich, MH (Hand)

J. Adam Hamilton, MD

Michael Knutsen, PA-C

Pediatrics

McFarland Clinic

421 E. Merle Hibbs Blvd,
Marshalltown, IA, 50158

641-752-0654

Colette Lothe, MD

Kerri Metzger, MD

Wendy Thiessen, MD

Podiatry

The Foot Doctor of Marshalltown

8 South 5th Avenue, Marshalltown, IA 50158
641-752-3338

Kevin Mulvey, DPM
Sean McMurray, DPM

McFarland Clinic

421 E. Merle Hibbs Blvd,
Marshalltown, IA, 50158
641-752-0654

Jeffrey Dikis, DPM

Specialist

McFarland Clinic

421 E. Merle Hibbs Blvd,
Marshalltown, IA, 50158
641-752-0654

Ikigu Thuku, MD (Pain Medicine)

Nephrology

McFarland Clinic

421 E. Merle Hibbs Blvd,
Marshalltown, IA, 50158
641-752-0654

Jacob Alexander, MD
Lavanya Amuluru, MD

UnityPoint Health - Marshalltown Multi-Specialty

51 UnityPoint Way, Marshalltown, IA 50158
641-844-6259

Vinay K. Kantamneni, MD
Ann Marie Bock, ARNP

Neurology

McFarland Clinic

421 E. Merle Hibbs Blvd,
Marshalltown, IA, 50158
641-752-0654

Edward Clemmons, DO
Michael Kitchell, MD
Semira Ramic, DO

Urology

UnityPoint Health - Marshalltown Multi-Specialty (

51 UnityPoint Way, Marshalltown, IA 50158
641-844-6259

Mark Newton, MD (urology)
Eric J. Askeland, MD (urology)
Eric D. Andresen, MD (urology)
Daniel Lee, MD (urology)

Veterans Care

Iowa Veterans Home

1301 Summit St, Marshalltown, IA 50158
641-752-1501

None:

Anesthesiology

Gastroenterology

Endocrinology

Infectious Disease

Pulmonology

Critical Care

Radiology

Rheumatology

Community (Service Area) Resources – Inventory of Services

Inventory of Health Services – UnityPoint Marshalltown (Hospital), Mc Farland Clinic, Primary Healthcare Clinic, and Marshall County, Iowa

(Sources: <https://www.unitypoint.org/marshalltown/default.asp>,
<https://www.mcfarlandclinic.com/communities/marshalltown/marshalltown-office>, &
<https://phciowa.org/marshalltown/>)

Inventory of Health Services – Marshalltown service area, Public Health Department, and Primary Service Area (Marshall County, IA)				
Cat	Healthcare Services Offered in County: Yes / No	Hospital/ Clinics	Health Dept	County
Clinic	Primary Care	Yes	No	Yes
Hosp	Alzheimer Center	No	No	Yes
Hosp	Ambulatory Surgery Centers	Yes	No	Yes
Hosp	Arthritis Treatment Center	Yes	No	No
Hosp	Bariatric/Weight Control Services	No	Yes	No
Hosp	Birthing/LDR/LDRP Room/ Obstetrics	Yes	No	Yes
Hosp	Breast Cancer	Yes	No	Yes
Hosp	Burn Care	No	No	No
Hosp	Cardiac Rehabilitation	Yes	No	Yes
Hosp	Cardiac Surgery	No	No	No
Hosp	Cardiology Services	Yes	No	Yes
Hosp	Case Management	Yes	Yes	Yes
Hosp	Chaplaincy/Pastoral Care Services	Yes	No	Yes
Hosp	Chemotherapy	Yes	No	Yes
Hosp	Colonoscopy	Yes	No	Yes
Hosp	Crisis Prevention	No	Yes	Yes
Hosp	CT Scanner	Yes	No	Yes
Hosp	Diagnostic Radioisotope Facility	Yes	No	No
Hosp	Diagnostic/Invasive Catheterization	No	No	No
Hosp	Enrollment Assistance Services	Yes	No	Yes
Hosp	Full Field Digital Mammography (FFDM)	Yes	No	Yes
Hosp	Genetic Testing/Counseling	Yes	No	No
Hosp	Geriatric Services	Yes	Yes	Yes
Hosp	Heart Surgery	No	No	No
Hosp	Hemodialysis	No	No	Yes
Hosp	HIV/AIDS Services	No	No	No
Hosp	Image-Guided Radiation Therapy (IGRT)	No	No	No
Hosp	Inpatient Acute Care - Hospital Services	Yes	No	Yes
Hosp	Intensity-Modulated Radiation Therapy (IMRT) 161	No	No	No
Hosp	Intensive Care Unit	No	No	No
Hosp	Intermediate Care Unit	Yes	No	Yes
Hosp	Interventional Cardiac Catheterization	No	No	No
Hosp	Isolation room	Yes	No	Yes

Inventory of Health Services – Marshalltown service area, Public Health Department, and Primary Service Area (Marshall County, IA)				
Cat	Healthcare Services Offered in County: Yes / No	Hospital/ Clinics	Health Dept	County
Hosp	Kidney/Liver/Lung Surgery	No	No	No
Hosp	Magnetic Resonance Imaging (MRI)	Yes	No	Yes
Hosp	Mobile Health Services	No	No	Yes
Hosp	Multi-slice Spiral Computed Tomography (<64 slice CT)	Yes	No	Yes
Hosp	Multi-slice Spiral Computed Tomography (<64+ slice CT)	No	No	No
Hosp	Neonatal	No	No	No
Hosp	Neurological Services	Yes	No	No
Hosp	Occupational Health Services	No	No	Yes
Hosp	Oncology Services	Yes	No	Yes
Hosp	Orthopedic Services	Yes	No	Yes
Hosp	Outpatient Surgery	Yes	No	Yes
Hosp	Pain Management	Yes	No	No
Hosp	Palliative Care Program	Yes	No	No
Hosp	Pediatric Services	Yes	No	Yes
Hosp	Physical Rehabilitation	Yes	No	Yes
Hosp	Positron Emission Tomography/CT (PET) (PET/CT)	Yes	No	Yes
Hosp	Psychiatric Services	Yes	No	Yes
Hosp	Radiology, Diagnostic & Therapeutic	Yes	No	Yes
Hosp	Reproductive Health	Yes	No	No
Hosp	Robotic Surgery	No	No	Yes
Hosp	Sleep Center	No	No	Yes
Hosp	Social Work Services	Yes	Yes	Yes
Hosp	Sports Medicine	Yes	No	Yes
Hosp	Swing Bed Services	Yes	No	Yes
Hosp	Transplant Services	No	No	No
Hosp	Trauma Center-Level IV	Yes	No	Yes
Hosp	Ultrasound	Yes	No	Yes
Hosp	Women's Health Services	Yes	No	Yes
Hosp	Wound Care	Yes	No	Yes
SR	Adult Day Care Program	No	No	No
SR	Assisted Living	No	No	Yes
SR	Home Health Services	No	No	Yes
SR	Hospice	No	No	Yes
SR	Long-Term Care and Nursing Home Services (evaluation)	No	No	Yes
SR	Retirement Housing	No	No	Yes
SR	Skilled Nursing Care	Yes	No	Yes
ER	Emergency Services	Yes	No	Yes
ER	Urgent Care Center	Yes	No	No
ER	Ambulance Services	Yes	No	Yes
SERV	Alcoholism-Drug Abuse	No	No	Yes
SERV	Blood Donor Center	No	No	No

Inventory of Health Services – Marshalltown service area, Public Health Department, and Primary Service Area (Marshall County, IA)				
Cat	Healthcare Services Offered in County: Yes / No	Hospital/ Clinics	Health Dept	County
SERV	Chiropractic Services	No	No	Yes
SERV	Complementary Medicine Services	No	Yes	No
SERV	Dental Services	Yes	No	Yes
SERV	Fitness Center	No	No	Yes
SERV	Health Education Classes/Health Fairs/ Support Groups	Yes	Yes	Yes
SERV	Health Information Center	Yes	No	Yes
SERV	Health Screenings	Yes	Yes	Yes
SERV	Meals on Wheels	No	No	Yes
SERV	Nutrition Programs	Yes	Yes	Yes
SERV	Patient Education Center	Yes	Yes	No
SERV	Teen Outreach Services	No	Yes	Yes
SERV	Tobacco Treatment/Cessation Program	Yes	By Referral	Yes
SERV	Transportation to Health Facilities	No	No	Yes
SERV	Wellness Program	Yes	Yes	Yes

Providers Delivering Care – Marshall County, Iowa

CARE DELIVERY

Care Providers			
	FTE Physicians		FTE Allied Staff
# of FTE Providers working in Primary Service Area (PSA)	PSA Based DRs	Visiting DRs Community	PSA Based PA / NP
Primary Care:			
Family Practice	6	5	14
Internal Medicine/Geriatrician	1	0	0
Obstetrics/Gynecology	1	2	6
Pediatrics	0	3	0
Medical Specialist:			
Allergy/Immunology	0	1	0
Audiology	0	1	0
Cardiology	0	3	0
Dermatology	1	0	0
Endocrinology	0	0	0
ENT (Ear/Nose/Throat)/ Otolaryngology	0	1	1
Gastroenterology	0	0	0
Oncology/Radiation Therapy	0	3	0

Care Providers			
	FTE Physicians		FTE Allied Staff
# of FTE Providers working in Primary Service Area (PSA)	PSA Based DRs	Visiting DRs Community	PSA Based PA / NP
Orthopedics /Surgery	1	1	1
Orthotics/Prosthetics	0	2	1
Infectious Diseases	0	0	0
Occupational Medicine	0	0	0
Physical Medicine/Rehab	0	0	0
Podiatry	3	3	0
Psychiatry	0	1	6
Pulmonary	0	0	0
Rheumatology	0	0	0
Surgery/Specialists:			
Anesthesia/Pain	0	1	0
General Surgery/Colon/Oral	0	2	0
Emergency/Urgent Care	5	0	8
Hospitalist	4	0	9
Neurology	0	3	0
Ophthalmology/Optomety	0	10	0
Nephrology	0	4	1
Pathology	0	0	0
Radiology	0	0	0
Urology	0	4	0
Women's Health	0	1	0
Non-Hospital Based (Community):			
Chiropractor	0	6	0
Optometrist	0	10	0
Psychiatry	0	1	6
Dentist	14	0	0

Service Directory

EMERGENCY NUMBERS

Police/ Sheriff	911
Fire	911
Ambulance	911

NON-EMERGENCY /MUNICIPAL NUMBERS (MARSHALL COUNTY, IOWA)

Marshall County Sheriff (Police)	641-754-6380
Marshall County EMS (UnityPoint - Hospital)	641-754-5151
Marshalltown Fire	641-754-5723
Marshalltown Police	641-754-5725

QUICK REFERENCE PHONE GUIDE

Action Now	1-800-622-5168
Al-Anon “Free to Be Me”	(515) 462-4253
Alcoholics Anonymous	(515) 282-8550
Alzheimer’s Disease Helpline	1-800-272-3900
American Cancer Society	1-800-227-2345
American Red Cross	1-800-887-2988
Arthritis Foundation	1-866-378-0636
Battered Women	1-800-433-SAFE
Child Abuse Hotline	1-800-795-9606
Dependent Adult Abuse Hotline	1-800-362-2178
Dependent Adult and Child Abuse	1-800-652-9516
Domestic Abuse Hotline	1-800-942-0333
First Call for Help	(515) 246-6555
Foundation Through Crisis	1-800-332-4224
Gambling Hotline	1-800-238-7633
Iowa Arson/Crime Hotline	1-800-532-1459
Iowa Child Abuse Reporting Hotline	1-800-362-2178
Iowa State Patrol Emergency	1-800-525-5555
Medicare	1-800-MEDICARE
Mental Health Information and Referral	1-800-562-4944
National Alcohol Hotline	1-800-252-6465
National Center for Missing and Exploited Children	1-800-THE LOST
National Institute on Drugs	1-800-662-4537
Poison Control	1-800-222-1222
Senior Health Insurance Info Program (SHIIP)	1-800-351-4664
Substance Abuse Information & Treatment	1-800-662-HELP
Suicide Prevention Hotline	1-800-SUICIDE
Teen Line (Red Cross)	1-800-443-8336

GENERAL ONLINE HEALTH RESOURCES

Doctors and Dentists—General

[AMA Physician Select: Online Doctor Finder](#) (American Medical Association) [DocFinder](#) (Administrators in Medicine) [Find a Dentist](#) (Academy of General Dentistry) [Find a Dentist: ADA Member Directory](#) (American Dental Association) [Physician Compare](#) (Centers for Medicare & Medicaid Services)

Hospitals and Clinics—General

[Find a Health Center](#) (Health Resources and Services Administration) [Find a Provider: TRICARE Provider Directories](#) (TRICARE Management Activity) [Hospital Quality Compare](#) (Centers for Medicare & Medicaid Services)

Doctors and Dentists—Specialists

[ACOG's Physician Directory](#) (American College of Obstetricians and Gynecologists) [ACR: Geographic Membership Directory](#) (American College of Rheumatology) [American College of Surgeons Membership Directory](#) (American College of Surgeons) [American Osteopathic Association D.O. Database](#) (American Osteopathic Association) [ASGE: Find a Doctor](#) (American Society for Gastrointestinal Endoscopy) [Cancer Genetics Services Directory](#) (National Cancer Institute) [Child and Adolescent Psychiatrist Finder](#) (American Academy of Child and Adolescent Psychiatry) [Dystonia: Find a Health Care Professional](#) (Dystonia Medical Research Foundation) [Expert Locator: Immunologists](#) (Jeffrey Modell Foundation) [Find a Dermatologic Surgeon](#) (American Society for Dermatologic Surgery) [Find a Dermatologist](#) (American Academy of Dermatology) [Find a Gastroenterologist](#) (American College of Gastroenterology) [Find a Gynecologic Oncologist](#) (Society of Gynecologic Oncologists) [Find a Hand Surgeon](#) (American Society for Surgery of the Hand) [Find a Hematologist](#) (American Society of Hematology) [Find a Neurologist](#) (American Academy of Neurology) [Find a Pediatric Dentist](#) (American Academy of Pediatric Dentistry) [Find a Pediatrician or Pediatric Specialist](#) (American Academy of Pediatrics) [Find a Periodontist](#) (American Academy of Periodontology) [Find a Physical Medicine & Rehabilitation Physician](#) (American Academy of Physical Medicine and Rehabilitation) [Find a Plastic Surgeon](#) (American Society of Plastic Surgeons) [Find a Podiatrist](#) (American Podiatric Medical Association) [Find a Thyroid Specialist](#) (American Thyroid Association) [Find a Urologist](#) (American Urological Association) [Find an ACFAS Physician](#) (American College of Foot and Ankle Surgeons) [Find an Allergist/Immunologist: Search](#) (American Academy of Allergy, Asthma, and Immunology) [Find an Endocrinologist](#) (Hormone Health Network) [Find an Eye M.D.](#) (American Academy of Ophthalmology) [Find an Interventional Radiologist](#) (Society of Interventional Radiology) [Find an Oncologist](#) (American Society of Clinical Oncology) [Find an Oral and Maxillofacial Surgeon](#) (American Association of Oral and Maxillofacial Surgeons) [Find an Orthopedic Foot and Ankle MD](#) (American Orthopedic Foot and Ankle Society) [Find an Otolaryngologist \(ENT\)](#) (American Academy of Otolaryngology--Head and Neck Surgery) [Finding an Eye Care Professional](#) (National Eye Institute) [GI Locator Service](#) (American Gastroenterological Association)

Other Healthcare Providers

[AMTA's Find a Massage Therapist](#) (American Massage Therapy Association) [Cancer Genetics Services Directory](#) (National Cancer Institute) [Find a Diabetes Educator](#) (American Association of Diabetes Educators) [Find a Genetic Counselor](#) (National Society of Genetic Counselors) [Find a Midwife](#) (American College of Nurse-Midwives) [Find a Nurse Practitioner](#) (American Academy of Nurse Practitioners) [Find a Physical Therapist](#) (American Physical Therapy Association) [Find a Professional: Online Directory of Audiology and Speech-Language Pathology Programs](#) (American Speech-Language-Hearing Association) [Find a Registered Dietitian](#) (Academy of Nutrition and Dietetics) [Find a Therapist](#) (Anxiety Disorders Association of America) [Find an Audiologist](#) (American Academy of Audiology) [Manual Lymphatic Drainage Therapists](#) (National Lymphedema Network) [National Register of Health Service Providers in Psychology](#) (National Register of Health Service Providers in Psychology) [NCCAOM: Find Nationally Certified Practitioners](#) (National Certification Commission for Acupuncture and Oriental Medicine) [Search for an Emergency Contraception Provider in the United States](#) (Princeton University, Office of Population Research)

Hospitals and Clinics—Specialized

[Accredited Birth Centers](#) (Commission for the Accreditation of Birth Centers) [Alzheimer's Disease Research Centers](#) (National Institute on Aging) [Cystic Fibrosis Foundation: Find a Chapter](#) (Cystic Fibrosis Foundation) [Cystic Fibrosis Foundation: Find an Accredited Care Center](#) (Cystic Fibrosis Foundation) [Dialysis Facility Compare](#) (Centers for Medicare & Medicaid Services) [FDA Certified Mammography Facilities](#) (Food and Drug Administration) [Find a Free Clinic](#) (National Association of Free Clinics) [Find an Indian Health Service Facility](#) (Indian Health Service) [Find Treatment Centers](#) (American Cancer Society) [Genetics Clinic Directory Search](#) (University of Washington) [Locate a Sleep Center in the United States by Zip Code](#) (American Academy of Sleep Medicine) [MDA ALS Centers](#) (Muscular Dystrophy Association) [Mental Health Services Locator](#) (Substance Abuse and Mental Health Services Administration) [NCI Designated Cancer Centers](#) (National Cancer Institute) [Neurofibromatosis Specialists](#) (Children's Tumor Foundation) [Post-Polio Directory 2011: Post-Polio Clinics, Health Professionals, Support Groups](#) (Post-Polio Health International including International Ventilator Users Network) [Spina Bifida Clinic Directory](#) (Spina Bifida Association of America) [Substance Abuse Treatment Facility Locator](#) (Substance Abuse and Mental Health Services Administration) [Transplant Center Search Form](#) (BMT InfoNet) [U.S. NMDP Transplant Centers](#) (National Marrow Donor Program) [VA Health Care Facilities Locator & Directory](#) (Veterans Health Administration) [Where to Donate Blood](#) (AABB) [Where to Donate Cord Blood](#) (National Marrow Donor Program)

Other Healthcare Facilities and Services

[Alzheimer's Disease Resource Locator](#) (Fisher Center for Alzheimer's Research Foundation) [American College of Radiology Accredited Facility Search](#) (American College of Radiology) [APA District Branch / State Association Directory](#) (American Psychiatric Association) [Directory of Organizations \(Deafness and Communication Disorders\)](#) (National Institute on Deafness and Other Communication Disorders) [Dog Guide Schools in the United States](#) (American Foundation for the Blind) [Eldercare Locator](#) (Dept. of Health and Human Services) [Find a Hospice or Palliative Care Program](#) (National Hospice and Palliative Care Organization) [Find Services \(for People with Vision Loss\)](#) (American Foundation for the Blind) [Find Urgent Care Centers by State](#) (Urgent Care Association of America) [Genetic Testing Laboratory Directory](#) (University of Washington) [Home Health Compare](#) (Centers for Medicare & Medicaid Services) [Medicare: Helpful Contacts](#) (Centers for Medicare & Medicaid Services) [Muscular Dystrophy Association Clinics and Services](#) (Muscular Dystrophy Association) [National Foster Care and Adoption Directory Search](#) (Children's Bureau) [Nursing Home Compare](#) (Centers for Medicare & Medicaid Services) [Organizations That Offer Support Services](#) (National Cancer Institute) [Poison Control Centers](#) (American Association of Poison Control Centers) [Resources and Information for Parents about Braille](#) (American Foundation for the Blind) [State-Based Physical Activity Program Directory](#) (Centers for Disease Control and Prevention) [TSA Chapters in the USA](#) (Tourette Syndrome Association) [Violence against Women: Resources by State](#) (Dept. of Health and Human Services, Office on Women's Health) [Where to Find Hair Loss Accessories and Breast Cancer Products](#) (American Cancer Society)

SOURCE: MedlinePlus provides links to directories to help you find libraries, health professionals, services, and facilities. NLM does not endorse or recommend the organizations that produce these directories, nor the individuals or organizations that are included in the directories.

DATA DETAILS

Plan Tactics for Marshall County, Iowa – 2017 to 2023

Please contact the Marshall County Public Health Department for past results of Community Health Assessment and Community Health Improvement Plans.

CHA Survey Detailed Survey, Findings (Primary Research)

HEALTHCARE PERCEPTIONS & SATISFACTION for MARSHALL COUNTY, IOWA

The leadership of Marshall County Public Health Department invite you to help improve the care and services of our community. Please help by answering these few short questions. Please answer honestly and your responses will be kept confidential.

The survey will take approximately 10 minutes, please allow enough time for your responses. Thank you again for your time and information to approve the health of our communities.

pavelkaspointconsulting@gmail.com [Switch account](#)



Not shared

* Indicates required question

In general, how would you rate the overall quality of the health care delivered to your community? *

Very Good Good Fair Poor Very Poor

Overall quality of care



How would you rate the following health services? (Please select one box for each row)

	Very Good	Good	Fair	Poor	Very Poor	Not Applicable (NA)
Ambulance (Emergency Response)	<input type="radio"/>	<input type="radio"/>	<input type="radio"/>	<input type="radio"/>	<input type="radio"/>	<input type="radio"/>
Children's health	<input type="radio"/>	<input type="radio"/>	<input type="radio"/>	<input type="radio"/>	<input type="radio"/>	<input type="radio"/>
Chiropractor	<input type="radio"/>	<input type="radio"/>	<input type="radio"/>	<input type="radio"/>	<input type="radio"/>	<input type="radio"/>
Dentist(s)	<input type="radio"/>	<input type="radio"/>	<input type="radio"/>	<input type="radio"/>	<input type="radio"/>	<input type="radio"/>
Eye Doctor / Optometrist	<input type="radio"/>	<input type="radio"/>	<input type="radio"/>	<input type="radio"/>	<input type="radio"/>	<input type="radio"/>
Family Planning Services	<input type="radio"/>	<input type="radio"/>	<input type="radio"/>	<input type="radio"/>	<input type="radio"/>	<input type="radio"/>
Family Practice (Medical) Services	<input type="radio"/>	<input type="radio"/>	<input type="radio"/>	<input type="radio"/>	<input type="radio"/>	<input type="radio"/>
Home Care Agencies / Home Health	<input type="radio"/>	<input type="radio"/>	<input type="radio"/>	<input type="radio"/>	<input type="radio"/>	<input type="radio"/>
Hospice	<input type="radio"/>	<input type="radio"/>	<input type="radio"/>	<input type="radio"/>	<input type="radio"/>	<input type="radio"/>
Hospital Services	<input type="radio"/>	<input type="radio"/>	<input type="radio"/>	<input type="radio"/>	<input type="radio"/>	<input type="radio"/>
Mental Health Services	<input type="radio"/>	<input type="radio"/>	<input type="radio"/>	<input type="radio"/>	<input type="radio"/>	<input type="radio"/>
Nursing Home	<input type="radio"/>	<input type="radio"/>	<input type="radio"/>	<input type="radio"/>	<input type="radio"/>	<input type="radio"/>
Pharmacy	<input type="radio"/>	<input type="radio"/>	<input type="radio"/>	<input type="radio"/>	<input type="radio"/>	<input type="radio"/>
Public Health	<input type="radio"/>	<input type="radio"/>	<input type="radio"/>	<input type="radio"/>	<input type="radio"/>	<input type="radio"/>

School Nurse	<input type="radio"/>	<input type="radio"/>	<input type="radio"/>	<input type="radio"/>	<input type="radio"/>	<input type="radio"/>
Specialist (physician) care	<input type="radio"/>	<input type="radio"/>	<input type="radio"/>	<input type="radio"/>	<input type="radio"/>	<input type="radio"/>
Teen health (drinking, abuse, safety, pregnancy)	<input type="radio"/>	<input type="radio"/>	<input type="radio"/>	<input type="radio"/>	<input type="radio"/>	<input type="radio"/>
<input type="text"/>						

In your opinion, how much of a problem are the following causes of poor health in your community? (please select one box for each row)

	Not a problem	Somewhat of a problem	Major problem	Don't know
Cancer	<input type="radio"/>	<input type="radio"/>	<input type="radio"/>	<input type="radio"/>
Diabetes	<input type="radio"/>	<input type="radio"/>	<input type="radio"/>	<input type="radio"/>
Drug Abuse	<input type="radio"/>	<input type="radio"/>	<input type="radio"/>	<input type="radio"/>
Substance Abuse	<input type="radio"/>	<input type="radio"/>	<input type="radio"/>	<input type="radio"/>
Heart Disease	<input type="radio"/>	<input type="radio"/>	<input type="radio"/>	<input type="radio"/>
Mental Illness	<input type="radio"/>	<input type="radio"/>	<input type="radio"/>	<input type="radio"/>
Obesity	<input type="radio"/>	<input type="radio"/>	<input type="radio"/>	<input type="radio"/>
Pneumonia / Flu	<input type="radio"/>	<input type="radio"/>	<input type="radio"/>	<input type="radio"/>
Respiratory Disease	<input type="radio"/>	<input type="radio"/>	<input type="radio"/>	<input type="radio"/>
Sexually Transmitted Diseases	<input type="radio"/>	<input type="radio"/>	<input type="radio"/>	<input type="radio"/>
Stroke	<input type="radio"/>	<input type="radio"/>	<input type="radio"/>	<input type="radio"/>
Suicide	<input type="radio"/>	<input type="radio"/>	<input type="radio"/>	<input type="radio"/>
Trauma	<input type="radio"/>	<input type="radio"/>	<input type="radio"/>	<input type="radio"/>

Other health problems in your community not listed above?

Your answer

In your opinion, what areas need additional education or attention in our community? (Please select all that apply)

- Abuse / Violence
- Aging (Dementia)
- Alcohol
- Alternative Medicine
- Children's Health
- Chronic Diseases (example Diabetes or Heart Failure)
- Drugs/Illegal substances
- Family Planning / Birth Control
- Lead Exposure
- Mental Illness
- Neglect
- Nutrition
- Obesity
- Ozone / Air Quality
- Pain Management
- Poverty
- Preventative Health
- Sexually Transmitted Diseases
- Suicide
- Teen Health (drinking, abuse, safety, pregnancy)
- Tobacco Use
- Uninsured / Underinsured
- Vaccinations
- Water Quality
- Wellness Education
- Other:

How do you feel your local health care providers are doing in addressing the health needs of the following age groups? (Please select one box for each row)

	Very Good	Good	Fair	Poor	Very Poor	Not Applicable (NA)
Infants	<input type="radio"/>	<input type="radio"/>	<input type="radio"/>	<input type="radio"/>	<input type="radio"/>	<input type="radio"/>
Age 1 - 12	<input type="radio"/>	<input type="radio"/>	<input type="radio"/>	<input type="radio"/>	<input type="radio"/>	<input type="radio"/>
Age 13 - 17	<input type="radio"/>	<input type="radio"/>	<input type="radio"/>	<input type="radio"/>	<input type="radio"/>	<input type="radio"/>
Age 18 - 25	<input type="radio"/>	<input type="radio"/>	<input type="radio"/>	<input type="radio"/>	<input type="radio"/>	<input type="radio"/>
Age 26 - 44	<input type="radio"/>	<input type="radio"/>	<input type="radio"/>	<input type="radio"/>	<input type="radio"/>	<input type="radio"/>
Age 45 - 64	<input type="radio"/>	<input type="radio"/>	<input type="radio"/>	<input type="radio"/>	<input type="radio"/>	<input type="radio"/>
Age 65 - 84	<input type="radio"/>	<input type="radio"/>	<input type="radio"/>	<input type="radio"/>	<input type="radio"/>	<input type="radio"/>
Over 85	<input type="radio"/>	<input type="radio"/>	<input type="radio"/>	<input type="radio"/>	<input type="radio"/>	<input type="radio"/>

How would you rate the following public healthcare services? (Please select one box in each row)

	Very Good	Good	Fair	Poor	Very Poor	Not Applicable
Emergency preparedness	<input type="radio"/>	<input type="radio"/>	<input type="radio"/>	<input type="radio"/>	<input type="radio"/>	<input type="radio"/>
Health screenings	<input type="radio"/>	<input type="radio"/>	<input type="radio"/>	<input type="radio"/>	<input type="radio"/>	<input type="radio"/>
Access to services	<input type="radio"/>	<input type="radio"/>	<input type="radio"/>	<input type="radio"/>	<input type="radio"/>	<input type="radio"/>
Immunizations - Children's program	<input type="radio"/>	<input type="radio"/>	<input type="radio"/>	<input type="radio"/>	<input type="radio"/>	<input type="radio"/>
Immunizations - Flu vaccination clinics	<input type="radio"/>	<input type="radio"/>	<input type="radio"/>	<input type="radio"/>	<input type="radio"/>	<input type="radio"/>
Tobacco prevention / cessation programs	<input type="radio"/>	<input type="radio"/>	<input type="radio"/>	<input type="radio"/>	<input type="radio"/>	<input type="radio"/>
Tuberculosis (TB) control and testing	<input type="radio"/>	<input type="radio"/>	<input type="radio"/>	<input type="radio"/>	<input type="radio"/>	<input type="radio"/>
Disease Investigation	<input type="radio"/>	<input type="radio"/>	<input type="radio"/>	<input type="radio"/>	<input type="radio"/>	<input type="radio"/>

Are there health services in your community or neighborhood that you feel need to be improved and or changed? (Please be specific)

Your answer

Over the past 2 years, did you or someone from your household, receive health services outside of your county? *

- Yes
- No

Additional County Services

Please list the services you or your household member(s) have received outside of your county to improve or maintain your health.

Your answer

If offered, would you have received the services locally?

- Yes
- No
- Maybe

CHANGES TO HEALTH SERVICES

Over the last few years, Marshall County Public Health have been working to provide ongoing valuable services to the community. Please help us determine the improvements over the last three (3) years.

How would you rate each of the following in your community?

	Very Good	Good	Fair	Poor	Very Poor	Not aware of the services
Caregiver training programs	<input type="radio"/>	<input type="radio"/>	<input type="radio"/>	<input type="radio"/>	<input type="radio"/>	<input type="radio"/>
Early childhood development programs	<input type="radio"/>	<input type="radio"/>	<input type="radio"/>	<input type="radio"/>	<input type="radio"/>	<input type="radio"/>
Prevention of falls	<input type="radio"/>	<input type="radio"/>	<input type="radio"/>	<input type="radio"/>	<input type="radio"/>	<input type="radio"/>
Obesity prevention and treatment	<input type="radio"/>	<input type="radio"/>	<input type="radio"/>	<input type="radio"/>	<input type="radio"/>	<input type="radio"/>
Spiritual health support	<input type="radio"/>	<input type="radio"/>	<input type="radio"/>	<input type="radio"/>	<input type="radio"/>	<input type="radio"/>
Drug Abuse programs	<input type="radio"/>	<input type="radio"/>	<input type="radio"/>	<input type="radio"/>	<input type="radio"/>	<input type="radio"/>
Reduction of opiate/narcotic use	<input type="radio"/>	<input type="radio"/>	<input type="radio"/>	<input type="radio"/>	<input type="radio"/>	<input type="radio"/>
Alcohol use and treatment programs	<input type="radio"/>	<input type="radio"/>	<input type="radio"/>	<input type="radio"/>	<input type="radio"/>	<input type="radio"/>
Transportation (bus) services in community	<input type="radio"/>	<input type="radio"/>	<input type="radio"/>	<input type="radio"/>	<input type="radio"/>	<input type="radio"/>
Violence prevention	<input type="radio"/>	<input type="radio"/>	<input type="radio"/>	<input type="radio"/>	<input type="radio"/>	<input type="radio"/>

Which health needs are most pressing TODAY and are in need of improvement?

- Wellness options (example healthy lifestyle, food options, exercise, check-ups, screenings)
- Public awareness of healthcare services
- Mental Health / Counseling services
- Public transportation for healthcare
- After hours pharmacy services
- Nutritional education
- Home health / public health
- Hospice
- Dental services
- Obstetrics (family planning and prenatal care) services
- Healthy eating options
- Cancer services
- Chronic disease prevention (example diabetes or heart failure)
- Elder assistance programs
- Family assistance programs
- Care transitions (movement from one healthcare setting to another or home)
- Children's health and health screenings
- Emergency services
- Tobacco prevention
- Other:

YOUR HEALTH

In general, how would you best describe your health? (Please select only one)

	Very Good	Good	Fair	Poor	Very Poor
Description of your personal health	<input type="radio"/>	<input type="radio"/>	<input type="radio"/>	<input type="radio"/>	<input type="radio"/>

Compared to a year ago, how would you rate your overall health now?

	Much better than a year ago	About the same	Much worse than a year ago
Change in health	<input type="radio"/>	<input type="radio"/>	<input type="radio"/>

Do you follow these health practices? (Please select one box for each row)

	Yes	No	Not Applicable (NA)
Do you get 2.5 hours of moderately intense physical activity each week	<input type="radio"/>	<input type="radio"/>	<input type="radio"/>
If female, do you have a pap smear every other year	<input type="radio"/>	<input type="radio"/>	<input type="radio"/>
If female and over 40, do you have annual mammograms	<input type="radio"/>	<input type="radio"/>	<input type="radio"/>
If male and over 50, do you have an annual prostate exam	<input type="radio"/>	<input type="radio"/>	<input type="radio"/>
If over 50, have you had a colonoscopy	<input type="radio"/>	<input type="radio"/>	<input type="radio"/>

Please complete sentence below - "Are you..."

	Yes	No	Not Applicable (NA)
Eating right (Daily, balanced plate of protein, fruits, vegetables, grains)	<input type="radio"/>	<input type="radio"/>	<input type="radio"/>
Using tobacco products weekly	<input type="radio"/>	<input type="radio"/>	<input type="radio"/>
Exercising 2-3 times weekly	<input type="radio"/>	<input type="radio"/>	<input type="radio"/>
Consuming alcohol (more than 1 drink daily)	<input type="radio"/>	<input type="radio"/>	<input type="radio"/>
Receiving an annual flu shot	<input type="radio"/>	<input type="radio"/>	<input type="radio"/>
Been without a place to stay for multiple nights (homeless)	<input type="radio"/>	<input type="radio"/>	<input type="radio"/>
Having difficulty with employment due to transportation, education, skills, childcare, scheduling, etc	<input type="radio"/>	<input type="radio"/>	<input type="radio"/>
Vaccinated against COVID-19	<input type="radio"/>	<input type="radio"/>	<input type="radio"/>

Please mark if you have ever felt...

	Yes	No
In the last 12 months, did you ever eat less than you felt you should because there wasn't enough money for food?	<input type="radio"/>	<input type="radio"/>
In the last 12 months, has your utility company shut off your service for not paying your bills?	<input type="radio"/>	<input type="radio"/>
Are you worried that in the next 2 months, you may not have housing?	<input type="radio"/>	<input type="radio"/>
Do problems getting child care make it difficult for you to work or study? (leave blank if you do not have children)	<input type="radio"/>	<input type="radio"/>
In the last 12 months, have you needed to see a doctor, but could not because of cost?	<input type="radio"/>	<input type="radio"/>
In the last 12 months, have you ever had to go without health care because you didn't have a way to get there?	<input type="radio"/>	<input type="radio"/>
Do you ever need help reading hospital materials?	<input type="radio"/>	<input type="radio"/>
Are you afraid you might be hurt in your apartment building or house?	<input type="radio"/>	<input type="radio"/>
Missed work (or lost a job) due to unreliable transportation?	<input type="radio"/>	<input type="radio"/>
In the last 12 months, have you taken less medicine than prescribed because there wasn't enough money to buy medication?	<input type="radio"/>	<input type="radio"/>

What type of healthcare facility do you use when not feeling well or sick?

- Clinic/Doctor's office
- Emergency Department
- Urgent-care/Acute Care
- Public Health Department
- Don't seek care/medical treatment
- Other:

ABOUT YOU

Please provide a bit more information about who you are so we can better serve the community.

What is your age?

- 17 and under
- 18 to 25
- 26 to 44
- 44 to 64
- 65 to 84
- 85 and over

Your gender

- Female
- Male
- Prefer not to say

How would you identify yourself?

- Caucasian / White
- African American / Black
- Latino / Hispanic
- Indian / Native Alaskan
- Asian / Pacific Islander
- Multicultural / Multiracial
- Other:

How would you describe your household? (Please select all that apply)

- Single
- Married
- Parent / Guardian with children at home
- Multiple adults with children no longer at home
- Divorced
- Widowed
- Other:

Regarding your health insurance coverage, what type of health coverage is your primary plan? (Choose one)

- Private Insurance you purchased
- Covered by employer (employer pays total cost)
- Partially covered by employer (you and employer share cost)
- Medicare
- Medicaid
- No coverage (uninsured)

Where do you get most of your medical information?

- Doctor
- Internet
- Friend(s)
- Family
- Social media
- Television
- Radio
- Insurance company

For reporting purposes, are you involved in or are you a... (Please check all that apply)

- Board member (local health organization)
- Business / Merchant owner or employee
- Civic club member
- Clergy / Congregational Leader
- College / University student
- Construction / Housing / Builder
- Consumer of healthcare services
- Education official / Teacher
- Economic Development/Government
- Farmer / Rancher
- Health Department
- Healthcare Provider
- Hospital or Clinic employee
- Insurance industry
- Laborer / Manufacturing
- Law Enforcement
- Parent / Caregiver
- Student (high school)
- Veteran
- Other:

What is your home 5 digit zip code? *

Your answer

THANK YOU

Please provide today's date.

Your answer

If filling this with a paper form, please return the complete survey with enclosed business reply envelope or to the Marshall County Public Health Department.

Town Hall Meeting Outcomes (Primary Research)

Power Point Presentation from Town Hall

Marshall County Health Assessment 2023

1 COMMUNITY HEALTH ASSESSMENT (CHA)
COMMUNITY HEALTH IMPROVEMENT PLAN (CHIP)
MARSHALL COUNTY, IOWA

2 AGENDA

- Welcome and introductions
- Review the assessment/survey process and purpose
- Review past priorities and action items for Marshall County
- Provide summary of current assessment results
- Gain perspective from community participants for 2023
- Next steps and conclusion

3 INTRODUCTIONS

4 PROCESS AND PURPOSE OF CHA & CHIP

5 PURPOSE... IS TO:

- Identify key community health concerns
- Find and analyze community health needs, prioritize with implementation strategies
- Focus organization's efforts for improvement and structure for addressing social determinates of health
- Meet regulations and requirements

6 BACKGROUND

- 30-year history in Iowa
- Local action to promote and protect the health of communities
- A community-wide process to identify the most important factors affecting health in the community
- Plan strategies to build on strengths and work on gaps
- Foundation for statewide planning and action to improve the health of all who live, work and play in Iowa

Pavelka's Point Consulting, LLC 1

REQUIREMENTS

- Five steps outlined order to complete a CHA
 - Define the community
 - Assess communities' health needs
 - Include input representing broad interests of the community**
 - Document the CHA
 - Make submit a report and make it available to public

8



9

PAST PRIORITIES AND ACTION ITEMS

10

PRIORITIES – 2019

- Chronic disease, mental health, substance abuse (adults)
- Crisis care, mental health
- Sexual health / STD
- Individual preparedness in all populations (ability to recover from health incident)
- Access to care (all populations)

11

IMPROVEMENTS – 2019

(NOTE: % MAY NOT ADD UP TO 100% - ALMOST ALL QUESTIONS WERE OPTIONAL)

Priority Area	Not a Problem	Somewhat a Problem	Still a Problem
Chronic disease, mental health, substance abuse	0%	25%	25%
Crisis care, mental health	14%	25%	30%
Sexual health / STD	25%	14%	42%
Preparedness (ability to recover)	50%	14%	0%
Access to care (Public Health area)	14%	50%	25%

12

CURRENT ASSESSMENT RESULTS

13

IMPROVEMENTS (2019-2023)

- Preparedness for public health emergency
- Access to care for all populations
- Lead exposure / Air quality / Water quality
- Vaccinations
- Maternal and Child Health options or access (seeking elsewhere)
- Preventative health measures
- Aging services

14

STATE HEALTH RANKINGS - 2023

GOULDSBORO COUNTY HEALTH RANKINGS RANK: 94

Health Outcomes

Measure	Measures (100) County	Measures (100) State	United States
Length of Life	74.0	74.0	74.0
Prevalence of Diabetes	10.0	9.0	7.0
Quality of Life	54.0	54.0	54.0
Rate of New Cases	1.0	1.0	1.0
Rate of Physical Health Status	5.1	4.8	5.0
Rate of Behavioral Risk	4.1	4.4	4.1
Low Birthweight	7.0	7.0	7.0

Additional Health Outcomes not included in overall ranking

Measure	Measures (100) County	Measures (100) State	United States
Rate of Cancer	74.0	74.0	74.0
Rate of Age-Related Memory	74.0	74.0	74.0
Rate of Mobility	74.0	74.0	74.0
Rate of Disability	74.0	74.0	74.0
Rate of Mental Health Status	74.0	74.0	74.0
Rate of Physical Health Status	74.0	74.0	74.0
Rate of Behavioral Risk	74.0	74.0	74.0
Rate of Physical Health Status	74.0	74.0	74.0
Rate of Behavioral Risk	74.0	74.0	74.0

15

STATE HEALTH RANKINGS - 2023 (CONT.)

GOULDSBORO COUNTY HEALTH RANKINGS RANK: 91

Health Factors

Measure	Measures (100) County	Measures (100) State	United States
Health Behaviors	74.0	74.0	74.0
Alcohol Use	74.0	74.0	74.0
Smoking Status	74.0	74.0	74.0
Physical Activity	74.0	74.0	74.0
Weight Management	74.0	74.0	74.0
Diabetes Management	74.0	74.0	74.0
Healthy Blood Pressure	74.0	74.0	74.0
Healthy Blood Cholesterol	74.0	74.0	74.0
Healthy Blood Sugar	74.0	74.0	74.0

Additional Health Outcomes not included in overall ranking

Measure	Measures (100) County	Measures (100) State	United States
Rate of Cancer	74.0	74.0	74.0
Rate of Age-Related Memory	74.0	74.0	74.0
Rate of Mobility	74.0	74.0	74.0
Rate of Disability	74.0	74.0	74.0
Rate of Mental Health Status	74.0	74.0	74.0
Rate of Physical Health Status	74.0	74.0	74.0
Rate of Behavioral Risk	74.0	74.0	74.0

16

STATE HEALTH RANKINGS - 2023 (CONT.)

GOULDSBORO COUNTY HEALTH RANKINGS RANK: 91-94

Clinical Care

Measure	Measures (100) County	Measures (100) State	United States
Rate of Cancer	74.0	74.0	74.0
Rate of Age-Related Memory	74.0	74.0	74.0
Rate of Mobility	74.0	74.0	74.0
Rate of Disability	74.0	74.0	74.0
Rate of Mental Health Status	74.0	74.0	74.0
Rate of Physical Health Status	74.0	74.0	74.0
Rate of Behavioral Risk	74.0	74.0	74.0

Additional Clinical Care not included in overall ranking

Measure	Measures (100) County	Measures (100) State	United States
Rate of Cancer	74.0	74.0	74.0
Rate of Age-Related Memory	74.0	74.0	74.0
Rate of Mobility	74.0	74.0	74.0
Rate of Disability	74.0	74.0	74.0
Rate of Mental Health Status	74.0	74.0	74.0
Rate of Physical Health Status	74.0	74.0	74.0
Rate of Behavioral Risk	74.0	74.0	74.0

17

STATE HEALTH RANKINGS - 2023 (CONT.)

GOULDSBORO COUNTY HEALTH RANKINGS RANK: 79*

Social & Economic Factors

Measure	Measures (100) County	Measures (100) State	United States
High School Completion	74.0	74.0	74.0
State College	74.0	74.0	74.0
Unemployment	74.0	74.0	74.0
Childhood Poverty	74.0	74.0	74.0
Income Inequality	74.0	74.0	74.0
Childhood Obesity Prevalence	74.0	74.0	74.0
Food Insecurity	74.0	74.0	74.0
Homelessness	74.0	74.0	74.0

18

STATE HEALTH RANKINGS - 2023 (CONT.)

GOULDSBORO COUNTY HEALTH RANKINGS RANK: 91-94

Physical Environment

Measure	Measures (100) County	Measures (100) State	United States
Air Pollution - Particulate Matter	74.0	74.0	74.0
Drinking Water Contamination	74.0	74.0	74.0
Lead in Drinking Water	74.0	74.0	74.0
Drinking Water Fluoride	74.0	74.0	74.0
Lead in Tap Water	74.0	74.0	74.0

Additional Physical Environment not included in overall ranking

Measure	Measures (100) County	Measures (100) State	United States
Drinking Water Contamination	74.0	74.0	74.0
Lead in Drinking Water	74.0	74.0	74.0
Drinking Water Fluoride	74.0	74.0	74.0
Lead in Tap Water	74.0	74.0	74.0

19

PERCEPTIONS OF HEALTH & SERVICES - 2023

Needs Attention in the Communities	Percentage Selected
Mental illness (includes 41.7%)	82.2%
Drug / illegal substances	64.7%
Underinsured	64.7%
Obesity	64.7%
Chronic disease	58.2%
Poverty	58.2%
Teen health	58.2%
Alcohol use and abuse / Tobacco use	41.7%
Reproductive health / Birth control	41.7%
Nutrition and Wellness education	41.7%

20

SOCIAL DETERMINATES OF HEALTH - 2023

- Food shortage (no= 99.7 %)
- Utility shut off (cannot pay bill) (no=99.7%)
- Loss of housing (within 2 months) (no= 99.7 %)
- Childcare access (prevents working or school) (no=78.5%)
- Need healthcare, avoid because of cost (no= 99.7 %)
- Lack of transportation (to key appointments/work) (no= 99.7 %)
- Missed work because of transportation (no= 99.7 %)
- Reading ability (health materials or other) (no= 99.7 %)
- Safety at home (no= 99.7 %)

21

2023-2026 AREAS AND ACTIVITIES

22

OBJECTIVES AND STRATEGIES... THINK ABOUT

- Population's overall health
- Internal Public Health services
- Community and capacity building
- Community orientated education, wellness, and support

23

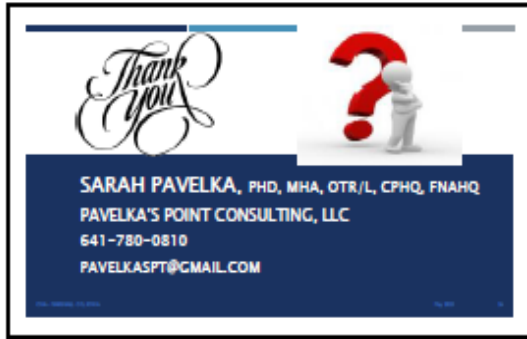
PRIORITIES AND ACTIONS

- Review current results and questions
- Define the current strengths for Marshall
 - What does it take to sustain these strengths?
- Determine top priorities and improvement areas
 - What needs to be improved or changed?
- Suggestions for actions

24

NEXT STEPS AND CONCLUSION

25



26

Top Priorities (votes for top actions)

<p>Mental Health: Increase the provided and breadth of services for Mental Health needs in the communities.</p>
<p>Limited maternal and child health services: Local and community services for mothers and children’s services. These include pre- and post-natal services.</p>
<p>Affordability of health services/ health insurance coverage: Working with local groups for affordable coverage for all residents of the county. This includes employment that provides affordable health coverage.</p>
<p>Housing for families (low-income options): Explore housing options for all residents of the communities including low-income housing options.</p>
<p>Childcare services and access: Assessment of childcare services in the community and options for residents</p>
<p>Education and assistance with health system navigation for underserved population/ cultures.</p>

Implementation of Priorities in Action Plan – listed prior in report.

CONTACT INFORMATION AND QUESTIONS

Public Health Department Contact

Patricia Thompson, Marshall County Public Health, Director
 Address: 101 E Main St, Annex Building, Marshalltown, IA 50158
 Phone: 641-844-2799

Consultant Contact

Sarah Pavelka, Pavelka's Point Consulting, LLC

Cedar Falls, Iowa

email: pavelkaspntconsulting@gmail.com

Phone: 641-780-0180

-----End of Report-----