



*Wayne County*  
**PUBLIC HEALTH**  
Prevent. Promote. Protect.

# COMMUNITY HEALTH NEEDS ASSESSMENT REPORT

2023



# TABLE OF CONTENTS

03	Introduction
03	Methodology
04	Our Community Data
08	Community Health Needs
09	Action Plan
14	Conclusion
14	Acknowledgements

# INTRODUCTION

For the 2023 Community Health Needs Assessment (CHNA), Wayne County Public Health (WCPH) did the assessment for the county via a digital and manual survey then discussed with local stakeholders the results of the survey.

Our organization is committed to serving as a community health leader and is working to address the needs of our community. By collecting data, we are able to determine our partnerships, outreach efforts, and goals from a resource, education, and delivery standpoint.

With this survey, we collected data with the hopes of:

- Understanding the health and safety issues our residents face
- Identifying strengths, existing programs, and activities that are working to help the community thrive
- Aligning our community outreach and benefits efforts to the needs of our community
- Developing and implementing a strategic plan to improve our community's health

# METHODOLOGY

To ensure we captured the most comprehensive needs of our community, we used a variety of methods to communicate the importance of survey participation to our community, including:

- Online survey link - available through our FACEBOOK page and we posted flyers throughout the county and at all 4 clinics-In Corydon, Lineville, Humeston and Seymour with a QR code patients/citizens could scan to download the survey.
- Information on electronic communication through our partnership with South Central Medical Clinic and Wayne County Hospital.
- Press release in the Times Republican, Humeston and Seymour Herald newspapers.
- Print copies of the survey located at WCPH, 4 clinics, and hospital.

In addition to communicating the survey availability, we also took time to collect data about our community, including demographics, health indicators, health risks, and more. To do this, we used different data from the US Census Bureau.

# COMMUNITY DATA

To create a complete understanding of our population, we began by pulling data about our residents, including age, gender, race/ethnicity, education, employment status, household income, health insurance status, and more.



## Total Population

A total of 6467 people live in the 525.47 square mile report area defined for this assessment according to the U.S. Census Bureau American Community Survey 2017-2022.

Report Area	Total Population	Population Density (per square mile)
Wayne County, IA	6467	12.4
Iowa	3,200,517	57.1
United States	333,287,557	93.8



## Gender

As of the 2017-2022 Census Survey, the population of Wayne County was 3266 males (or 50.5%) and 3201 females (or 49.5%).

Report Area	Male	Female	Male %	Female %
Wayne County, IA	3266	3201	50.5%	49.5%
Iowa	1,606,660	1,593,857	50.2%	49.8%
United States	165,310,628	167,976,929	49.6%	50.4%



## Age Groups

According to the USA Facts 2021 Survey, this report shows the population by age group.

Report Area	Age 0-4	Age 5-19	Age 20-34	Age 35-49	Age 50-64	Age 65+
Wayne County, IA	468	1409	971	993	1240	1427
Iowa	189,056	637,839	623,248	578,585	599,078	565,273
United States	18,273,338	63,303,998	67,019,102	63,185,364	63,707,990	55,847,953



## Race

According to the US Census Bureau 2017-2022 Survey, this report shows the population by race.

Report Area	White	Black	Asian	Native American/ Alaska Native	Native Hawaiian/ Pacific Islander	Other Rate	Multiple Races
Wayne County, IA	95.5%	0.6%	0.3%	0.2%	0.1%	1.9%	1.4%
Iowa	83.7%	4.4%	2.8%	0.6%	0.2%	2.2%	6.9%
United States	58.9%	13.6%	6.3%	1.3%	0.3%	19.1%	3.0%



## Education

Educational Attainment shows the distribution of the highest level of education achieved in the report area and helps schools and businesses to understand the needs of adults, whether it be workforce training or the ability to develop science, technology, engineering, and mathematics opportunities. Educational attainment is calculated for persons over 25 years old and is an estimated average for the period from 2016-2021 from US Census Reporter.

Report Area	No High School Diploma	High School Only	Some College	Bachelors Degree	Graduate Degree or Higher
Wayne County, IA	11%	42%	32%	11%	5%
Iowa	7%	30%	33%	21%	10%
United States	11%	26%	28%	21%	14%



## Employment Participation

Economic and social insecurity often are associated with poor health. Poverty, unemployment, and lack of educational achievement affect access to care and a community's ability to engage in healthy behaviors.

The table below displays the labor force participation rate for the report area according to the 2017-2022 US Census Bureau.

Report Area	Total Population Age 16+	Labor Force	Labor Force Participation Rate	Unemployment Rate
Wayne County, IA	5033	2794	58.1%	3.1%
Iowa	2,523,649	1,686,696	66.8%	2.7%
United States	261,649,873	161,031,000	62.6%	3.5%

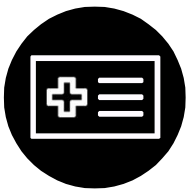


## Household Income

Economic and social insecurity often are associated with poor health. Poverty, unemployment, and lack of educational achievement affect access to care and a community's ability to engage in healthy behaviors.

The current average household income for Wayne County is \$53,039, compared to \$65,429 in the state of Iowa. This includes the income of the householder and individuals 15 years and older living in the home. To assist in guiding this report, the chart below outlines average household incomes and the percentage of our county that falls within those guidelines. This data is from US Population American Community Survey 2016-2021.

Report Area	Under \$25,000	\$25,000 – \$49,000	\$50,000 – \$99,999	\$100,000 – \$199,999	\$200,000 +
Wayne County, IA	18.93%	28.31%	17.53%	7.56%	2.60%
Iowa	16.63%	21.22%	16.52%	11.69%	5.75%
United States	17.18%	19.6%	14.82%	12.07%	9.46%

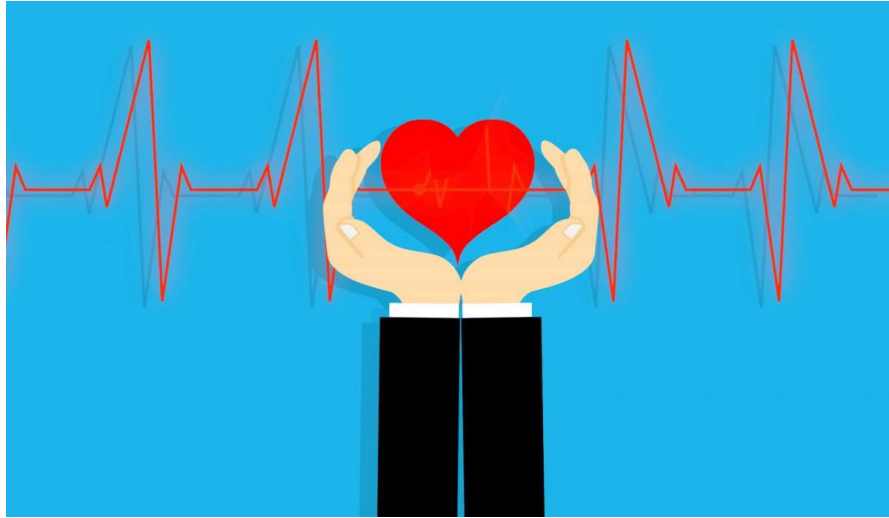


## Health Insurance

The lack of health insurance is considered a key driver of health status. This indicator is relevant because lack of insurance is a primary barrier to healthcare access. US Census Bureau 2021

Report Area	Uninsured Population	% of Uninsured Population
Wayne County, IA	605	9.35%
Iowa	217,635	6.8%
United States	27,996,155	8.4%

# HEALTH NEEDS OF OUR COMMUNITY



With the information gathered from our Community Health Needs Assessment, WCPH was able to identify the top three health needs of our community.

The identified needs are used to assist with community outreach planning including education opportunities, community events, and more.

The following pages will describe, in depth, how the data gathered helped to identify these needs.

## Top 3 Concerns

1. Mental Health Access
2. Elder Assistance
3. Transportation



# 1. MENTAL HEALTH ACCESS

When asked to identify the three (3) most important health issues in our community, 53.33% of respondents selected mental health issues. Additionally, when asked what types of health behaviors are needed to keep their family healthy, 60% of respondents indicated they/their family needed increased exercise and decrease stress.

In Wayne County, SparkMap estimates that 18% of adults in Wayne County have poor mental health. Given that 1 in 5 Americans will experience a mental illness in a given year, we are not surprised that mental health is our most needed health service.

**GOAL** Host 3 community education events each year focused on mental health

Strategies to achieve this goal include, but are not limited to:

Target	Strategy	Improvement Plan
Youth ages 12-14	Partner with Infinity Health and SIEDA to address substance abuse and mental health in middle school at all three schools.	Provide Mental Health First Aid to school staff <ul style="list-style-type: none"> <li>Work with school system/parents to provide education on available mental health services</li> </ul>
Veterans	Work with Wayne County Veterans Affairs to create programs for local Veterans if needed.	Work with Veterans Affairs to determine what is needed.
Adults	Partner with Infinity Health to focus on mental health & substance abuse opportunities	Educate schools, Circle of Friends Woman's Treatment Facility and law enforcement on Narcan education

# 2. Elder Assistance

This was the second highest health issue in Wayne County indicated on our survey. In working with stakeholders, and listening to the elderly explain their needs, we came up with the following to work over the next years. The elderly can be a lost and quiet population in a county. Wayne County has 22.7% of those over 65 year of age.

**GOAL** Increase assistance to the elderly with education programs aimed towards their needs

Strategies to achieve this goal include, but are not limited to:

Strategy	Improvement Plan	Notes
Market elderly programs through social media, newspapers and in person classes	Collaborate with all available elderly resource networks available for the county and have at least 3 in person classes	<ul style="list-style-type: none"> <li>Promote services/ assistance enrolling such as SHIP program</li> </ul> <p>Elderly need to understand insurance plans they sign up for each year and what services they will receive on them</p>
Increase access to Iowa HHS regional office for Wayne County	The state HHS needs to revamp offices for better reg. coverage	Gather resources (Brochures, contacts etc.) to assist residents with enrolling

# Elder Assistance Continued

Strategy	Improvement Plan	Notes
Increase delivery services for elderly such as grocery delivery, prescription, meals, etc	Collaborate with Hy-Vee, Your Neighborhood Pharmacy, Meal on Wheels, etc.	Convene a group of elderly to pinpoint services they want improved first and thereafter.

# 3. TRANSPORTATION

The 2022 American Community Survey on Vehicles data estimates that 7.1 % of Wayne County Households do not have a motor vehicle. 22.4% of households have only 1 vehicle. Additionally, the rate of households with no motor vehicle is 7 times more likely to be renter-occupied than owner-occupied. This further indicates it is our lower-income households that are more likely to struggle with reliable transportation.

It is easy to see that lack of transportation is a major barrier to healthcare.

**GOAL** Provide transportation services to 30 individuals each year through free ride days and/or vouchers

Strategies to achieve this goal include, but are not limited to:

Strategy	Tactic	Notes
Educate our community about current transportation resources due to the fact that still citizens do not know what is available for them no matter age level	Utilize social media, all agency resources, and community publications	<ul style="list-style-type: none"><li>Share specifics about 10-15 transit program, including hours, cost, etc.</li></ul>

Increase free Transportation options	Sponsor "Free Ride" days for community	Utilize 10-15 for Services. Stakeholders seek funding to provide needed transportation at no cost
--------------------------------------	--	---

Provide ride vouchers to residents who need assistance getting to hospital, public health, clinics, etc.

Educate community about no cost options; educate staff about transportation services available in county.

- Work with 10-15 transit to keep vouchers on hand

◆

# CONCLUSION

Wayne County Public Health believes in the importance of conducting a Community Health Needs Assessment to ensure we are addressing healthcare needs in the communities we serve. Given the numerous variety of the needs and lack of resources available in the county to meet many of them, we are faced with the difficult task of focusing on the areas of the greatest need. As we conclude the Community Health Needs Assessment process and report, we will begin incorporating these goals, strategies and tactics into our future strategic initiatives.

It will take all the available agencies throughout the county to help serve the needs of those in our communities but we are a strong rural community that will work together to advance the strategies in Wayne County.

## ACKNOWLEDGMENTS

- Wayne County Public Health Community Health Survey 2023
- Wayne County Hospital and clinics
- CROSS Mental Health Services