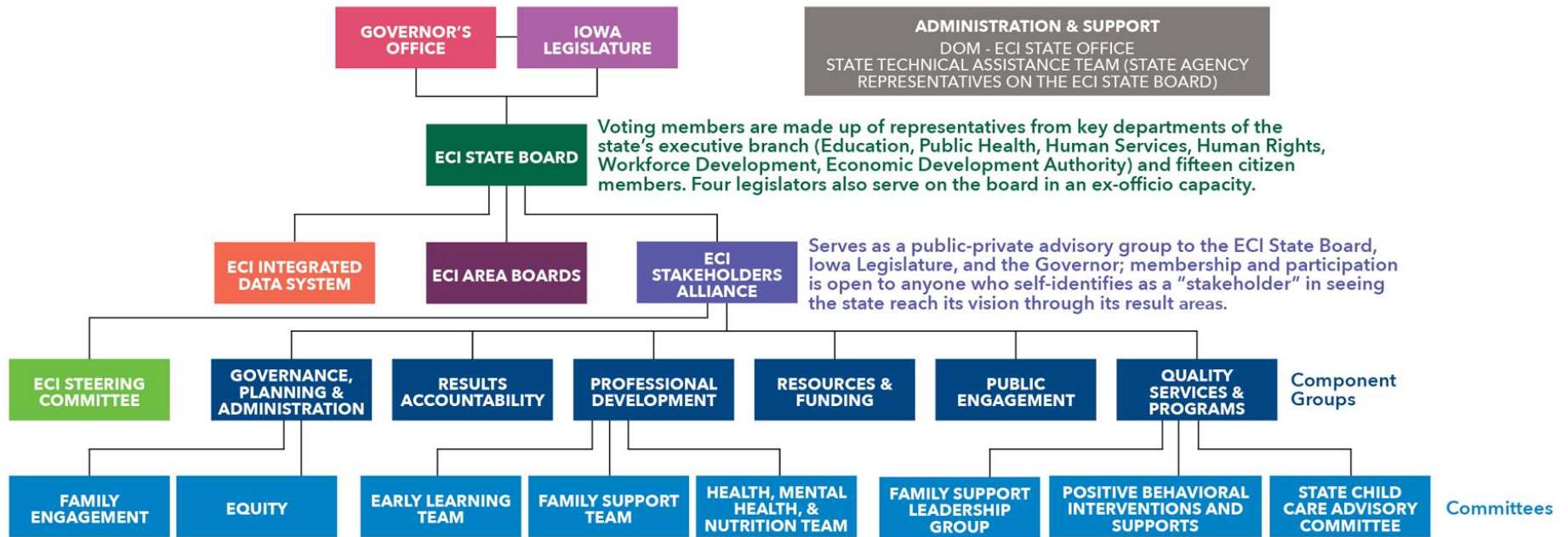




HOW THE CURRENT SYSTEM IS STRUCTURED





Early Childhood Iowa's purpose is to empower collaborative, systemic efforts to achieve the following desired results:

1. Healthy Children
2. Children Ready to Succeed in School
3. Safe and Supportive Communities
4. Secure and Nurturing Families
5. Secure and Nurturing Early Learning Environments

System Component	Descriptions for each part of the current system component in connection to Early Childhood Iowa (ECI).
Governor's Office	<ul style="list-style-type: none"> • Signed legislation to create Community Empowerment, creating a partnership between communities and the state to support young children and their families (1998). • Signed legislation to transform Community Empowerment into Early Childhood Iowa (ECI), establishing the ECI Stakeholders Alliance as the state's Early Childhood Advisory Council (2010). • May request or receive information from the ECI State Board and/or ECI Stakeholders Alliance.
Iowa Legislature	<ul style="list-style-type: none"> • Created Community Empowerment/Early Childhood Iowa, along with the ECI State Board and Local Boards, to provide governance for planning and collaboration of services to support young children and their families. • Provides a state appropriation and a TANF transfer to support efforts at the state and local levels. • May request or receive information from the ECI Stakeholders Alliance.
ECI State Board	<ul style="list-style-type: none"> • Provides oversight of the ECI Area Boards. May request or receive information from the ECI Stakeholders Alliance. • Includes citizen members appointed by the governor, the directors (or designees) of the Departments of Education, Economic Development Authority, Human Rights, Human Services, Public Health, and Workforce Development; and ex-officio legislators.
ECI's Integrated Data System	<ul style="list-style-type: none"> • Our developing integrated data system includes best practices in data governance, privacy and security, scientific integration and strategic communications for needs assessments, ongoing program and process evaluation, and continuous quality improvement efforts to inform decision-making.
ECI Area Boards	<ul style="list-style-type: none"> • Charged to reach the desired results to improve the quality of life for young children and their families at a local-level. • Consists of citizens, elected officials, and representatives of education, health, human services, faith, business, and consumers.
ECI Stakeholders Alliance	<ul style="list-style-type: none"> • Serves as a public-private advisory group to the ECI State Board, Iowa Legislature, and the Governor; membership and participation is open to anyone who self-identifies as a "stakeholder" in seeing the state reach its vision through its result areas. • Purpose: Overseeing and providing input into the development of a comprehensive, integrated early childhood system for Iowa that meets the needs of children 0-5 years of age and their families; integrates the early learning; health, mental health, and nutrition; family support; and special needs/early intervention systems; and providing support to the ECI State Board in addressing the early care, health, and education systems that affect children ages 0-5 years and their families. • Advises the governor, general assembly, state board, and other public and private policy bodies and service providers in coordinating activities and policies related to Iowa's comprehensive early childhood system.
ECI Steering Committee	<ul style="list-style-type: none"> • Established to provide leadership, organize, manage, and coordinate the activities of the ECI Stakeholders Alliance and the component groups.
ECI Component Groups and Subgroups	<ul style="list-style-type: none"> • Address key areas of Iowa's early childhood system. Ensure that each component of the system is present and functioning as well as possible and work on the implementation of specific strategies within the strategic plan. • Groups and committees focus on the essential elements of an early childhood system including: Governance (Equity and Family Engagement subgroups), Results Accountability, Professional Development, Public Engagement, Quality Services and Programs (Family Support Leadership Network, State Child Care Advisory Committee, and Early Childhood Positive Behavioral Interventions and Supports subgroups), and Resources and Funding.

