

# State Training School (STS) Cottage Remodel Project

Wendy Leiker  
*STS Superintendent*

Dr. Derek Hess  
*Clinical Director Psychology & Mental Health Therapy Services*

February 2, 2021

# Facility Overview



## State Training School (STS)

- ▶ **Location:** Eldora, Iowa
- ▶ **Population Served:** Delinquent male youth between the ages of 12-18
- ▶ **Services:** Treatment and educational services
- ▶ **Capacity:** 80 beds
- ▶ **Current Census:** 36
- ▶ **Total Staff:** 187

# STS Litigation Background

- ▶ Litigation began in November 2017;
  - Restraints
  - Seclusion
  - Quality of mental health care
- ▶ Order for injunctive relief received March 30, 2020
- ▶ Court approved DHS remedial plan on July 27, 2020
- ▶ STS must maintain substantial compliance for two years
- ▶ Court Monitor's first report due to Court by February 8, 2021
- ▶ New Superintendent and Deputy Superintendent
- ▶ Increased mental health staff

# STS Remedial Plan Update

## ► **Progress on Remedial Plan Deliverables:**

- New or revised policies and staff training on mental health services, suicide and crisis management, health records, room confinement, security restraints, and behavior management
- Increased use of evidence-based therapy, skills training, and restraint reduction interventions
- Clearer protocols for responding to crises and connecting youth with hospital level of care if needed
- A trauma-informed approach for improving students' skills, coping mechanisms, and behavior
- Improved coordination with Juvenile Court Services (JCS)

# Conditions of Confinement Research Sponsored by the Annie E. Casey Foundation

*“Dangerous and inadequate conditions in juvenile detention facilities open public officials to liability in civil rights lawsuits and harm the very youth whose care is entrusted to them. The Juvenile Detention Alternative Initiative (JDAI) developed a detailed set of standards that facilities can use to clean up detrimental treatment in detention.”*

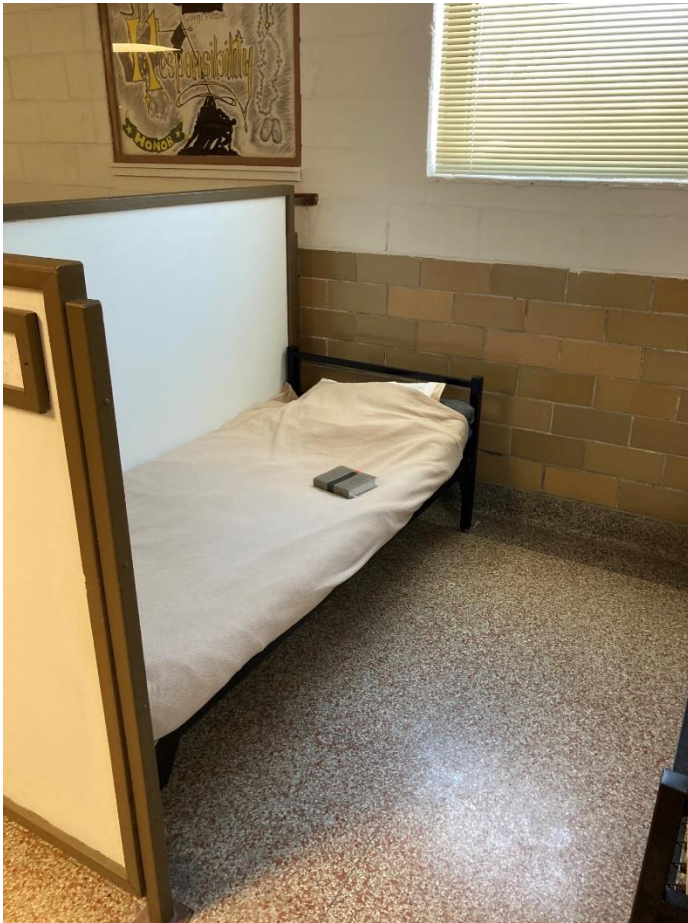
# Conditions of Confinement

- ▶ Living units are primarily designed for single occupancy sleeping rooms.
- ▶ Sleeping rooms are large enough to provide comfortable movement for in-room activities and hygiene for the number of youth in the room.
- ▶ The facility provides reasonable opportunity for privacy in rooms and bathrooms.
- ▶ Individual rooms have adequate lighting, sufficient for reading.
- ▶ Youth have access to operable sinks with hot/cold running water in the housing units at a minimum ratio of one basin for every 12 youth.
- ▶ The facility provides functioning toilets of at least one for every twelve youth.

# Cottage Redesign Project

- ▶ Cottages 3 and 4 were built in 1958 and were remodeled to have individual rooms in 1989
- ▶ Cottages 5, 7, and Receiving were built in 1946-1947
  - Remodel to individual rooms is necessary
  - Requested funding will support this remodel

# Cottage Redesign Project





# Cottage Redesign Project



# Cottage Redesign Project



# Cottage Redesign Project

- ▶ Risks and Concerns of Open Dorm Layout
  - Puts student safety at risk
  - Puts staff safety at risk
  - Decreased privacy for students
  - Environment is not therapeutic or trauma-informed
  - Maintains credibility gap for the State of Iowa

# Cottage Redesign Project

- ▶ Organizational Ingredients for Creating a Trauma-Informed Approach to Care:
  1. Leading and communicating about the transformation process;
  2. Engaging youth in organizational planning;
  3. Training clinical and non-clinical staff members on trauma-informed care;
  4. Creating a safe environment;
  5. Preventing secondary traumatic stress in staff;
  6. Hiring a trauma-informed workforce

# Cottage Redesign Project

## ► Benefits for Litigation

- Increased safety and privacy for students → more likely to obtain goals, reduce recidivism, and thrive.
- Increased staff safety → effective application of interventions and supports, less burnout, and sustainable workforce.
- Individual rooms allow for better mitigation of the spread of infectious disease, such as COVID-19.
- Enhanced credibility for Iowa given commitment to evidence-based and trauma-informed practices.

# Cottage Redesign Project

## ► Projected Costs

- In Summer 2020, STS worked with DAS, who consulted with Story Construction to provide a cost estimate
  - ▶ \$2 million per cottage
- Governor's recommendation also includes funding for furnishings for the rooms

# Cottage Redesign Project

## ► Scope of the Project

- 16 individual sleeping rooms per cottage (48 total rooms)
- Three showers added in each cottage
- Each room will have a sink and toilet
- Each room will have a window for natural light
- Each room will have electronic door hardware

# Cottage Redesign Project

## ► Project Timelines

- Funds available - July 2021
- Design - July 2021 to January 2022
- Bidding - February 2022
- Construction - March 2022 to February 2023
- Closeout - March 2023



# Cottage Redesign Project

## ► Census Impact

- Construction will have minimal impact on Census
- Students can be moved to other cottages during construction
- This is consistent with our current management of the cottage infrastructure upgrade project

# Current Cottage Infrastructure Upgrade

- ▶ Each building will have separate HVAC systems; previous design was single connected system using large boilers
- ▶ Each building will have new fire suppression system
- ▶ New “mandown” alarm system; staff wear alarms (increased staff safety)
- ▶ Filling in dilapidated underground tunnels

# Questions?

Contact Carrie Malone,  
DHS legislative liaison at  
[cmalone@dhs.state.ia.us](mailto:cmalone@dhs.state.ia.us)